



# Ramp Report Region 2 ADA 2026

Royal Street and Winthrop House of Pizza,  
Winthrop

CR14881

44.305485, -69.975346

Remove and regrade sidewalk.

Crosswalk signpost

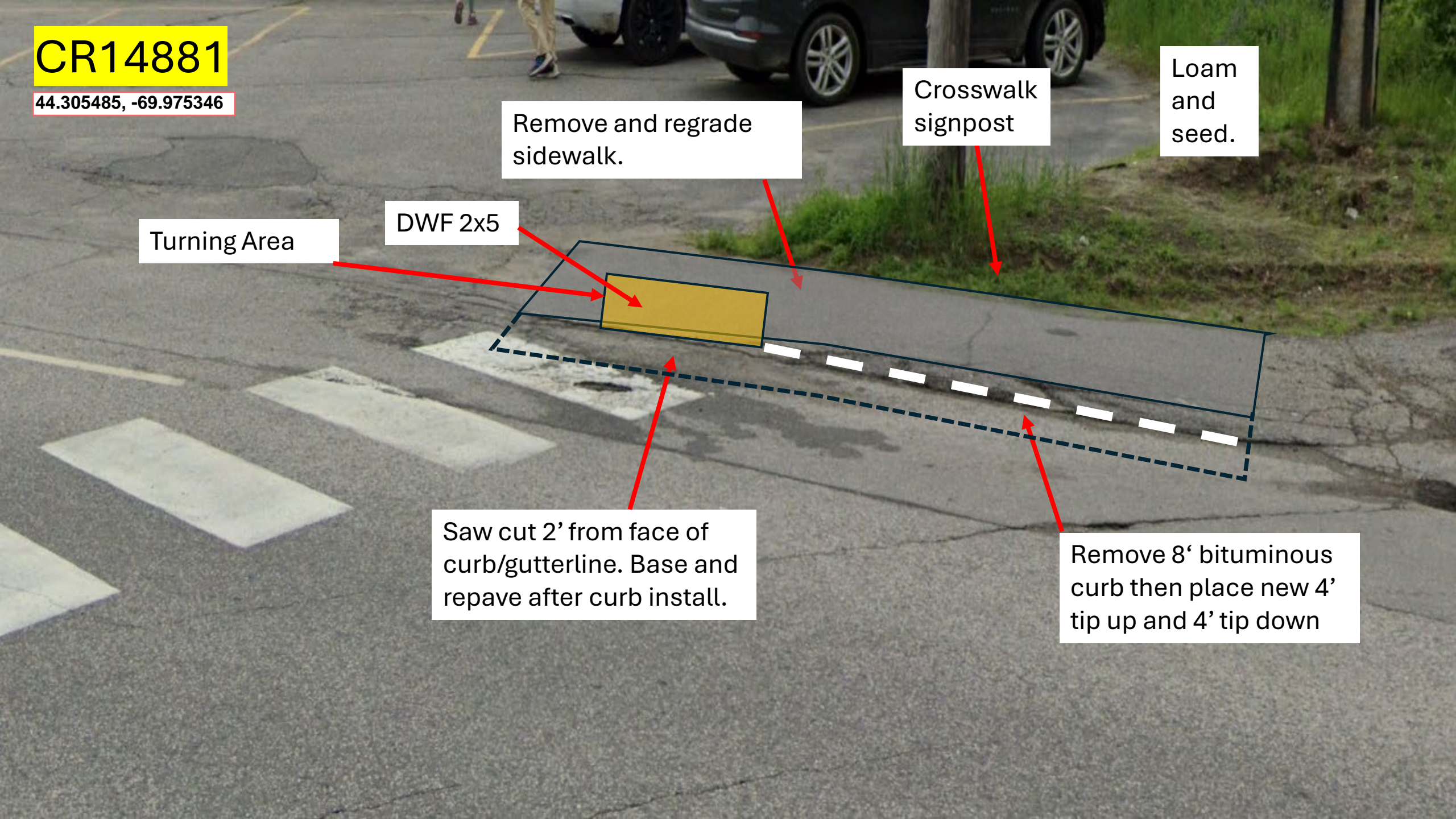
Loam and seed.

Turning Area

DWF 2x5

Saw cut 2' from face of curb/gutterline. Base and repave after curb install.

Remove 8' bituminous curb then place new 4' tip up and 4' tip down



CR14882

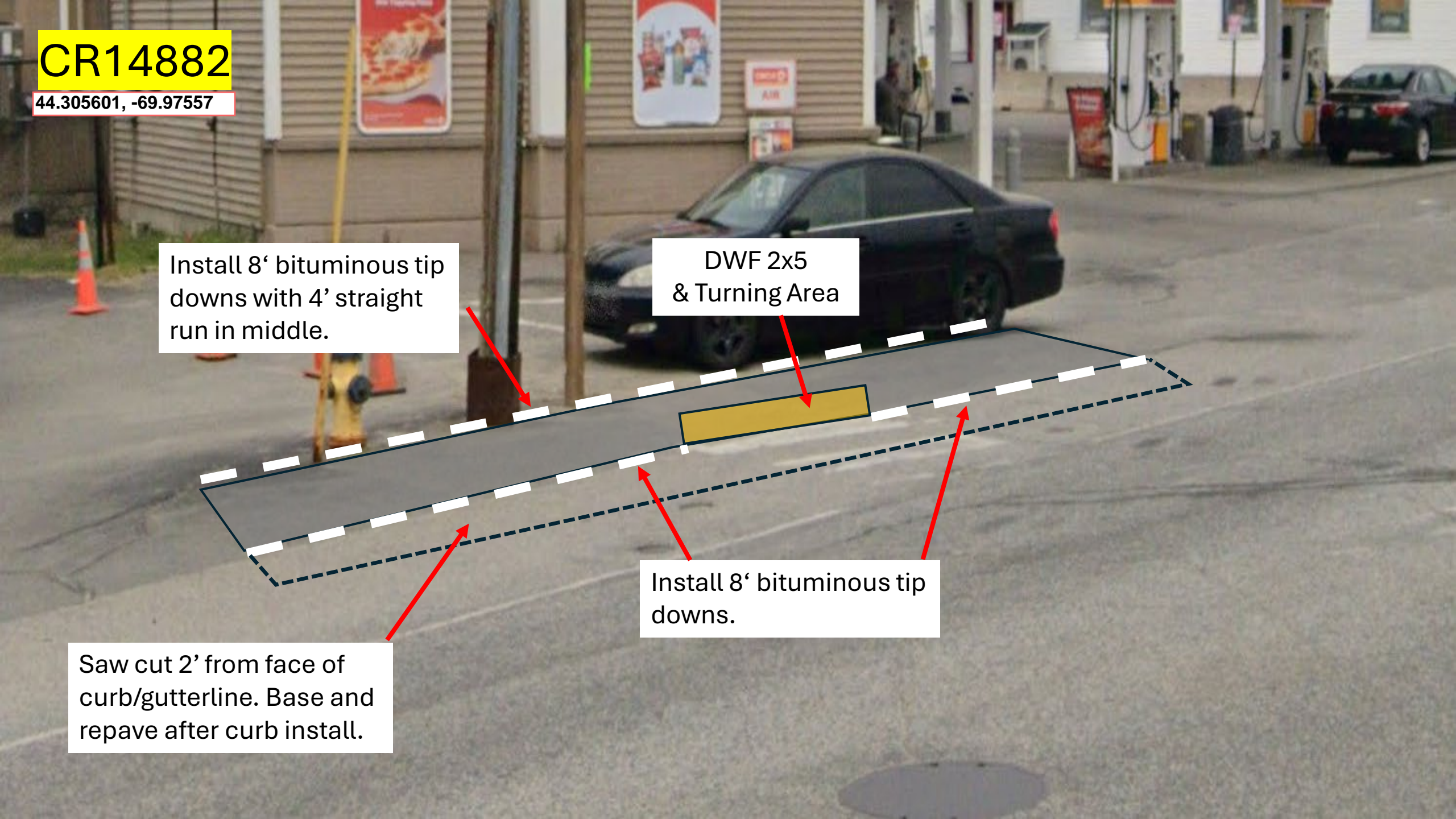
44.305601, -69.97557

Install 8' bituminous tip downs with 4' straight run in middle.

DWF 2x5 & Turning Area

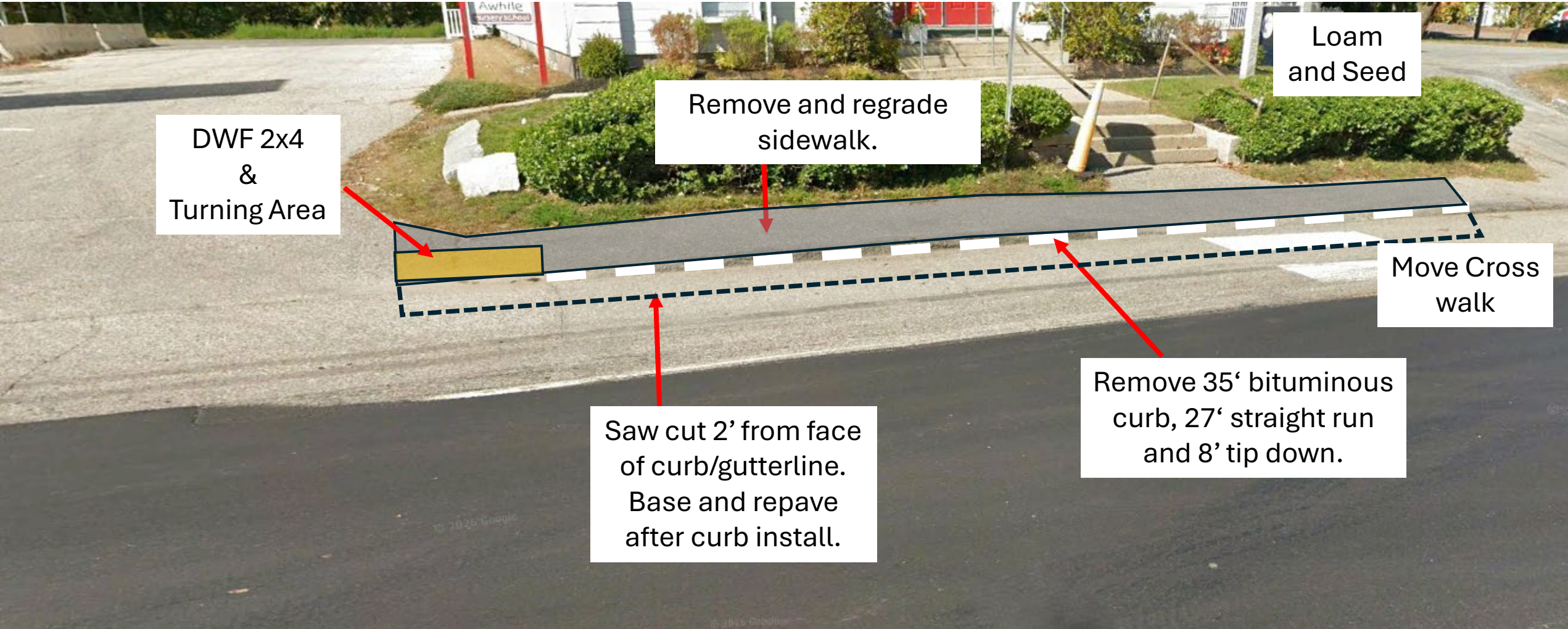
Install 8' bituminous tip downs.

Saw cut 2' from face of curb/gutterline. Base and repave after curb install.



# CR14883

44.305998, -69.974818



DWF 2x4  
&  
Turning Area

Remove and regrade  
sidewalk.

Loam  
and Seed

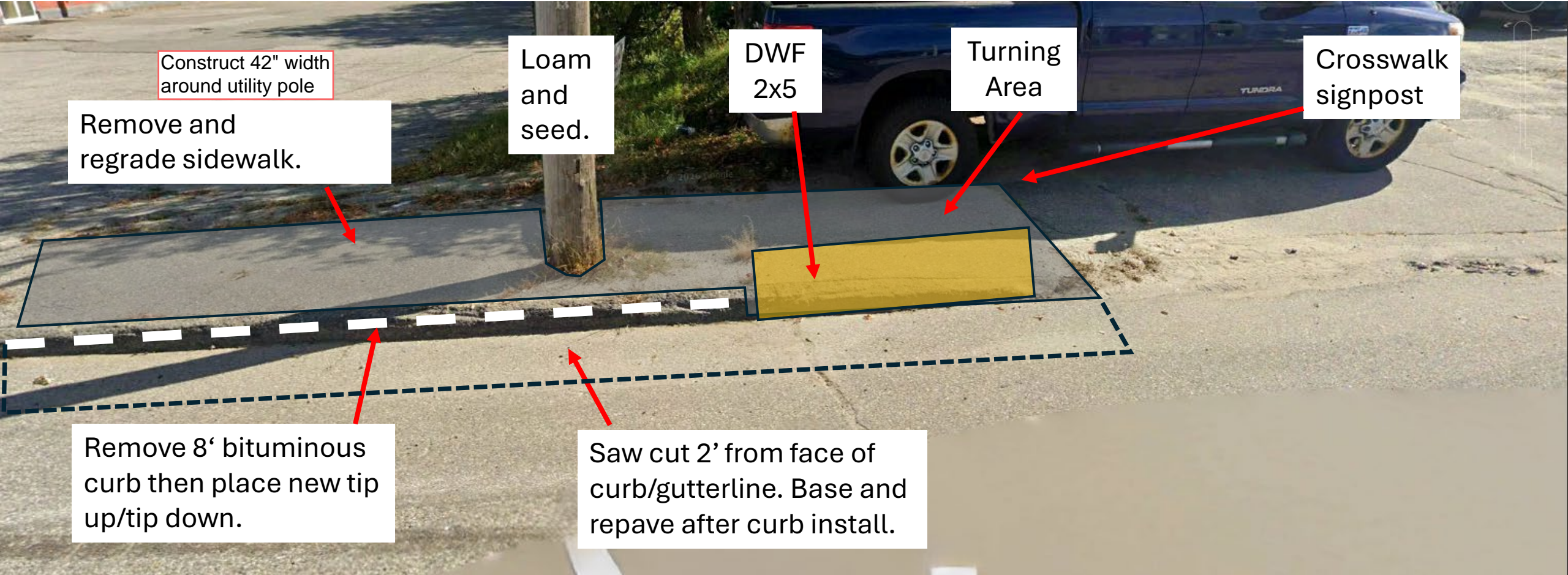
Move Cross  
walk

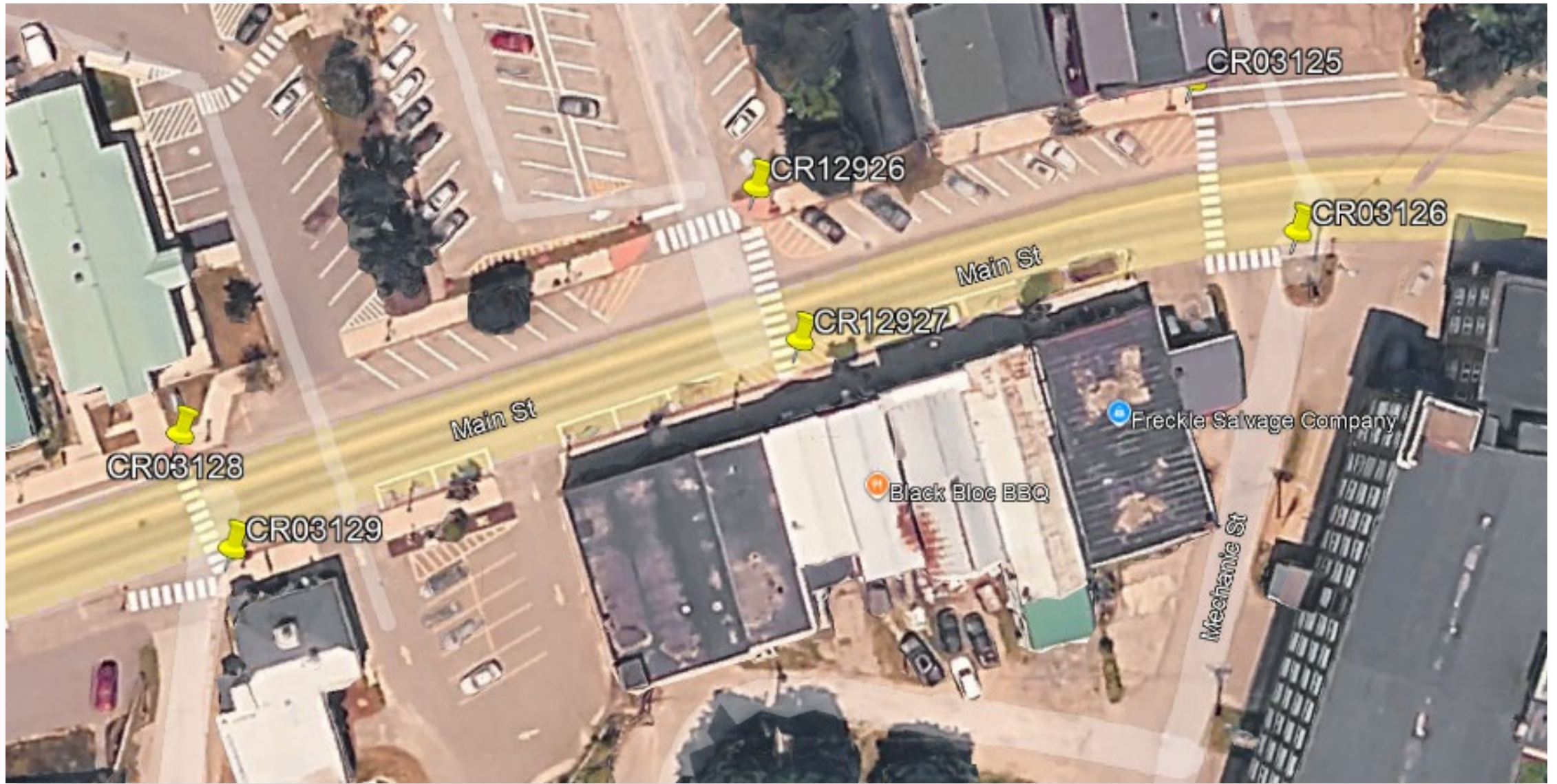
Remove 35' bituminous  
curb, 27' straight run  
and 8' tip down.

Saw cut 2' from face  
of curb/gutterline.  
Base and repave  
after curb install.

# CR14884

44.305884, -69.974729





Morton Street, Union Street and Commerce Place  
Winthrop

CR03128

44.30698, -69.972845

Running slope: 6.8%, cross slope 1.1%. Level landing: 4.4%  
ROW at back of sidewalk, May not achieve under 8% and level landing under 2%.

IF we must cut into sidewalk will have to go to lamp post and up to MH and do an overly large area. BUT matching into concrete coming from steps, still may not achieve correct slopes with this match point. (Yellow is believed to be ROW)

DWF 2x5

**UNDER REVIEW BY  
THE DEPARTMENT  
MEETING WITH  
Theresa Savoy**

CR03129

44.306862, -69.972779

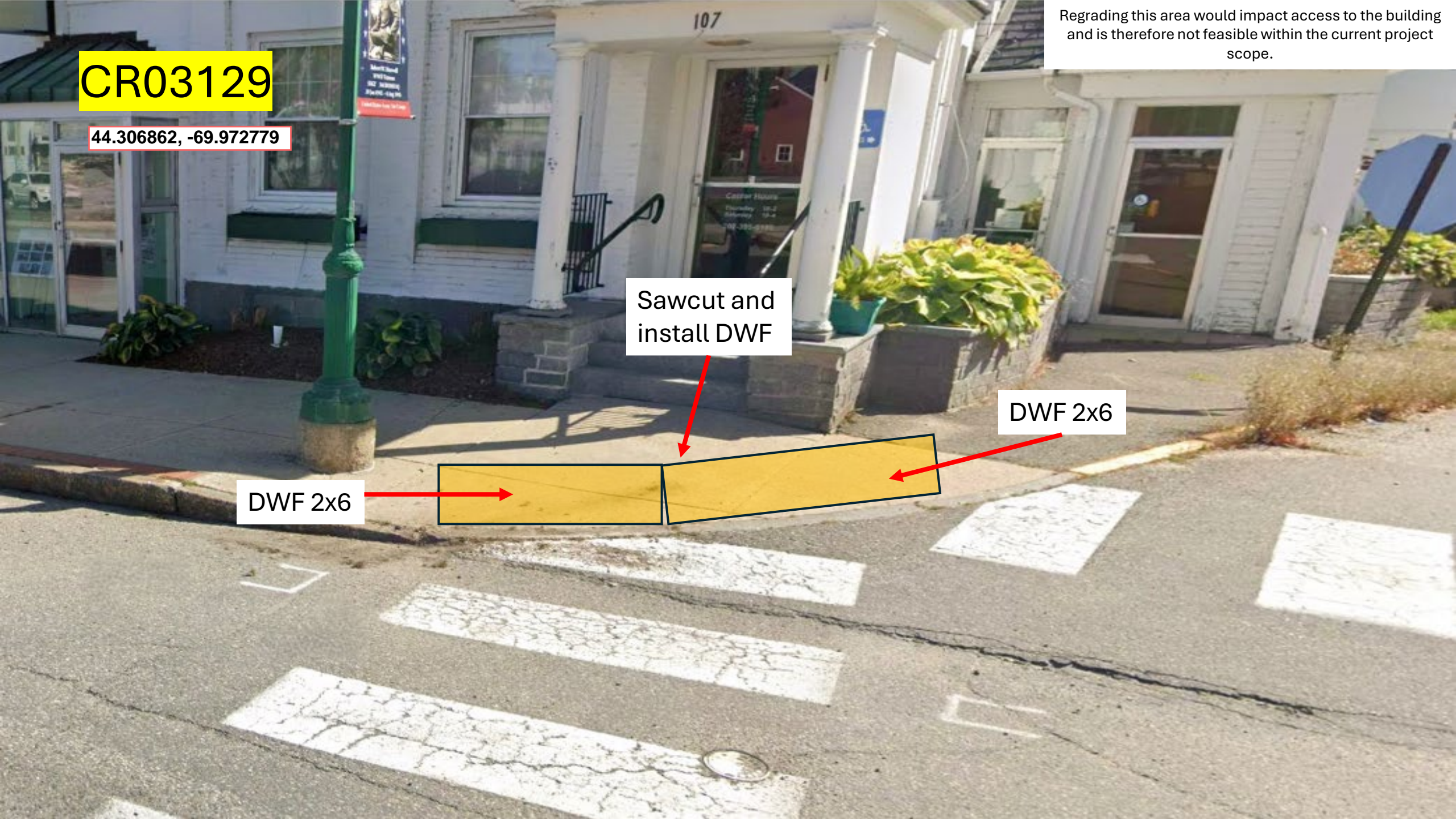
107

Regrading this area would impact access to the building and is therefore not feasible within the current project scope.

Sawcut and install DWF

DWF 2x6

DWF 2x6



CR12926

44.307198, -69.972059

Remove and regrade sidewalk

Loam and seed

Turning Area

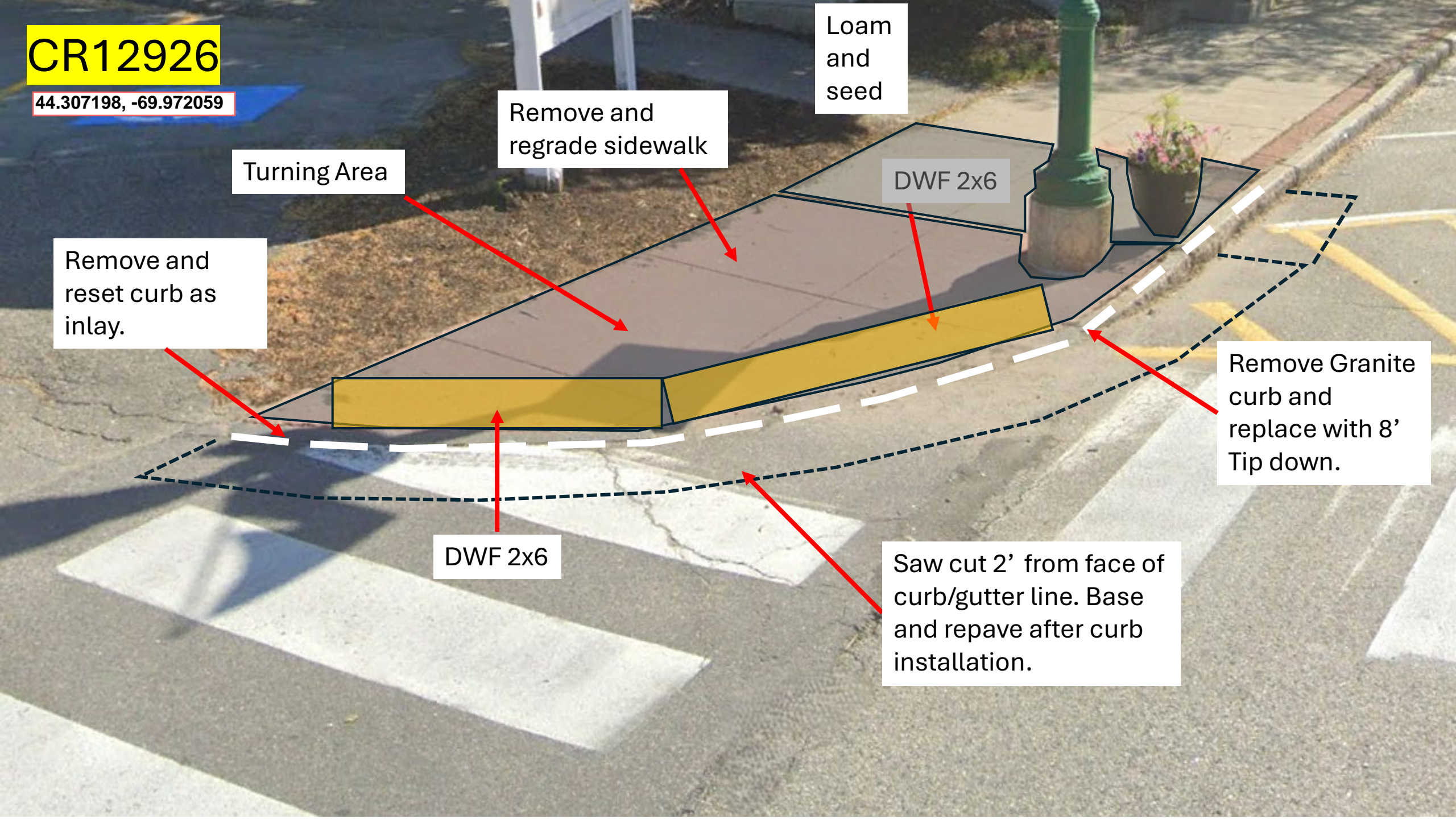
DWF 2x6

Remove and reset curb as inlay.

Remove Granite curb and replace with 8' Tip down.

DWF 2x6

Saw cut 2' from face of curb/gutter line. Base and repave after curb installation.



**CR12927**

44.307088, -69.972014

BLACKBLOC

The existing concrete sidewalk adjacent to the building shall remain and function as a turning area. The proposed ramp shall match into the existing joint approximately 4 feet from the building face.

Remove and regrade sidewalk to achieve correct slopes (six concrete blocks)

DWF  
2x5



CR03125

Crosswalk sign

44.307311, -69.971456

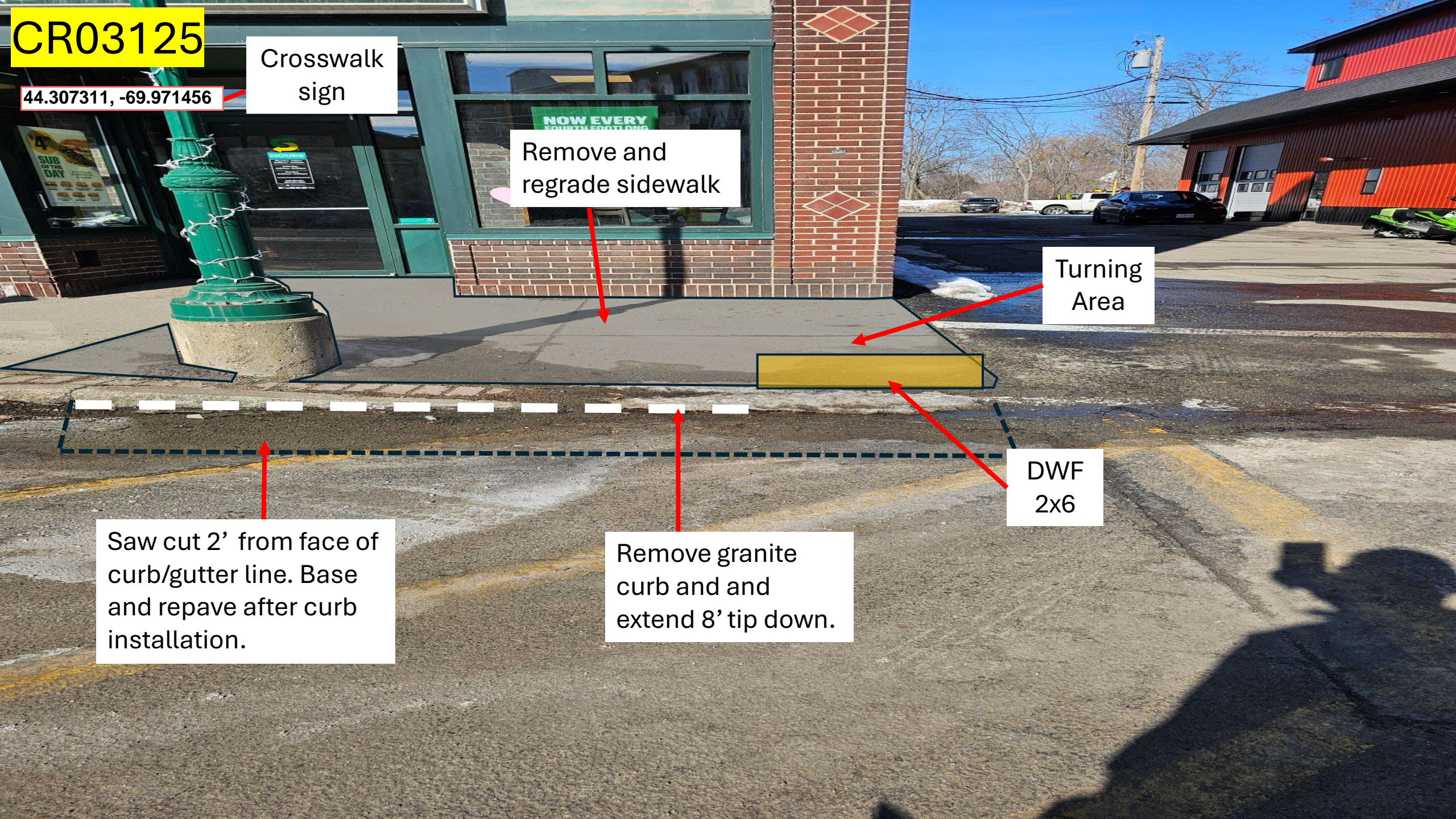
Remove and regrade sidewalk

Turning Area

DWF  
2x6

Saw cut 2' from face of curb/gutter line. Base and repave after curb installation.

Remove granite curb and extend 8' tip down.



**CR03126**

44.307168, -69.971346

Remove and regrade sidewalk

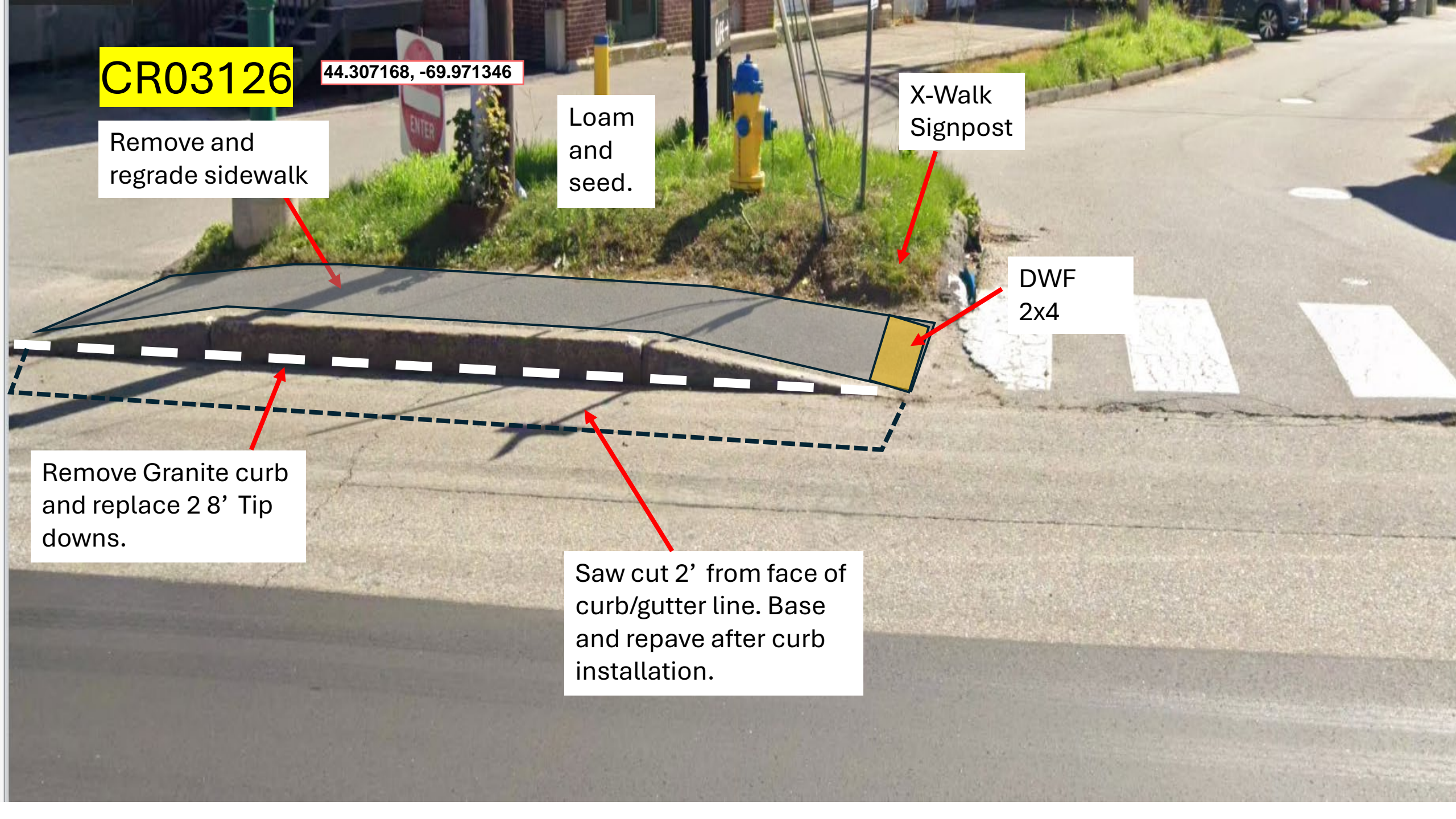
Loam and seed.

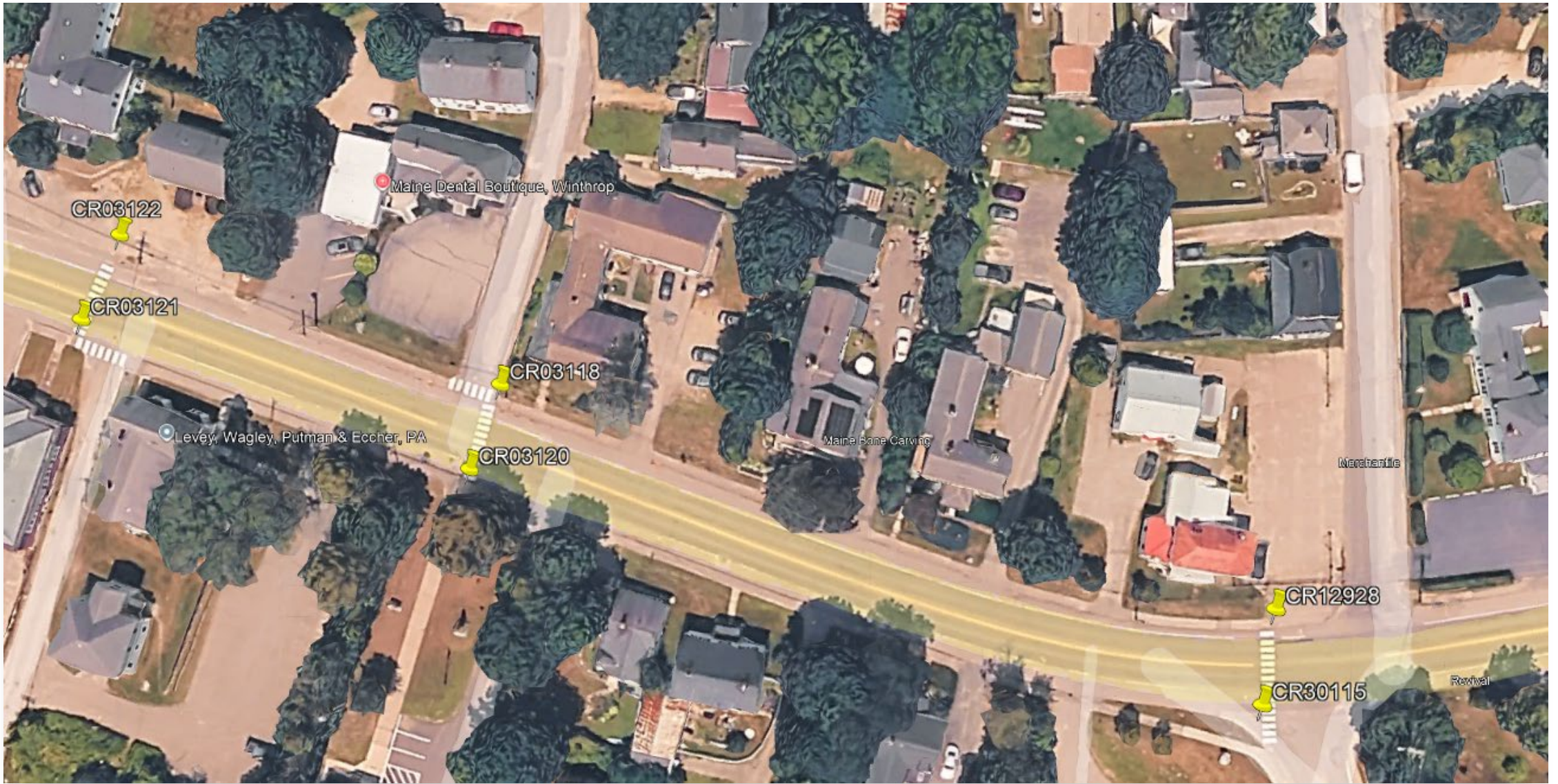
X-Walk Signpost

DWF 2x4

Remove Granite curb and replace 2 8' Tip downs.

Saw cut 2' from face of curb/gutter line. Base and repave after curb installation.

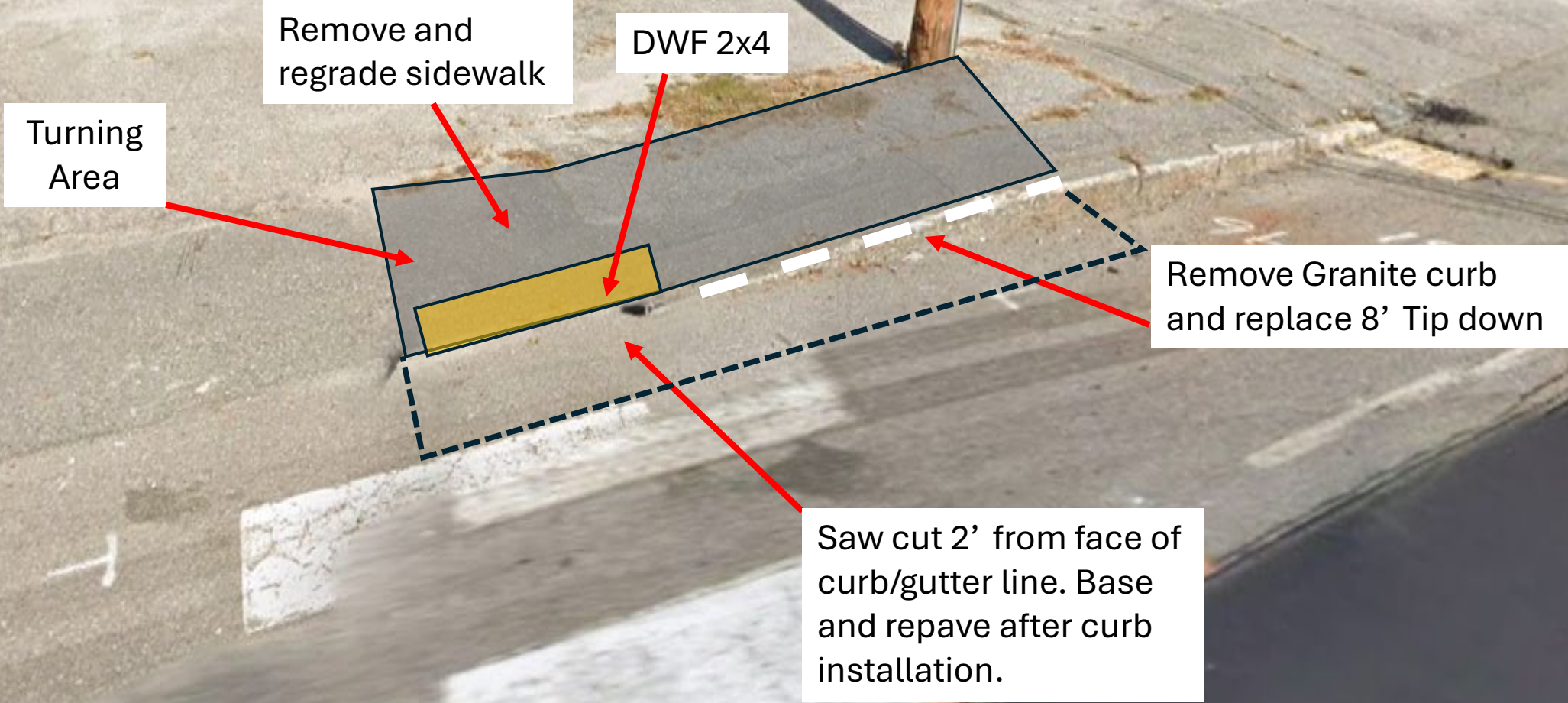




Clark Street, Hanson Street, and Highland Avenue  
Winthrop

CR03122

44.307162, -69.970194



**CR03121**

44.307046, -69.970268

Loam and seed  
behind sidewalk

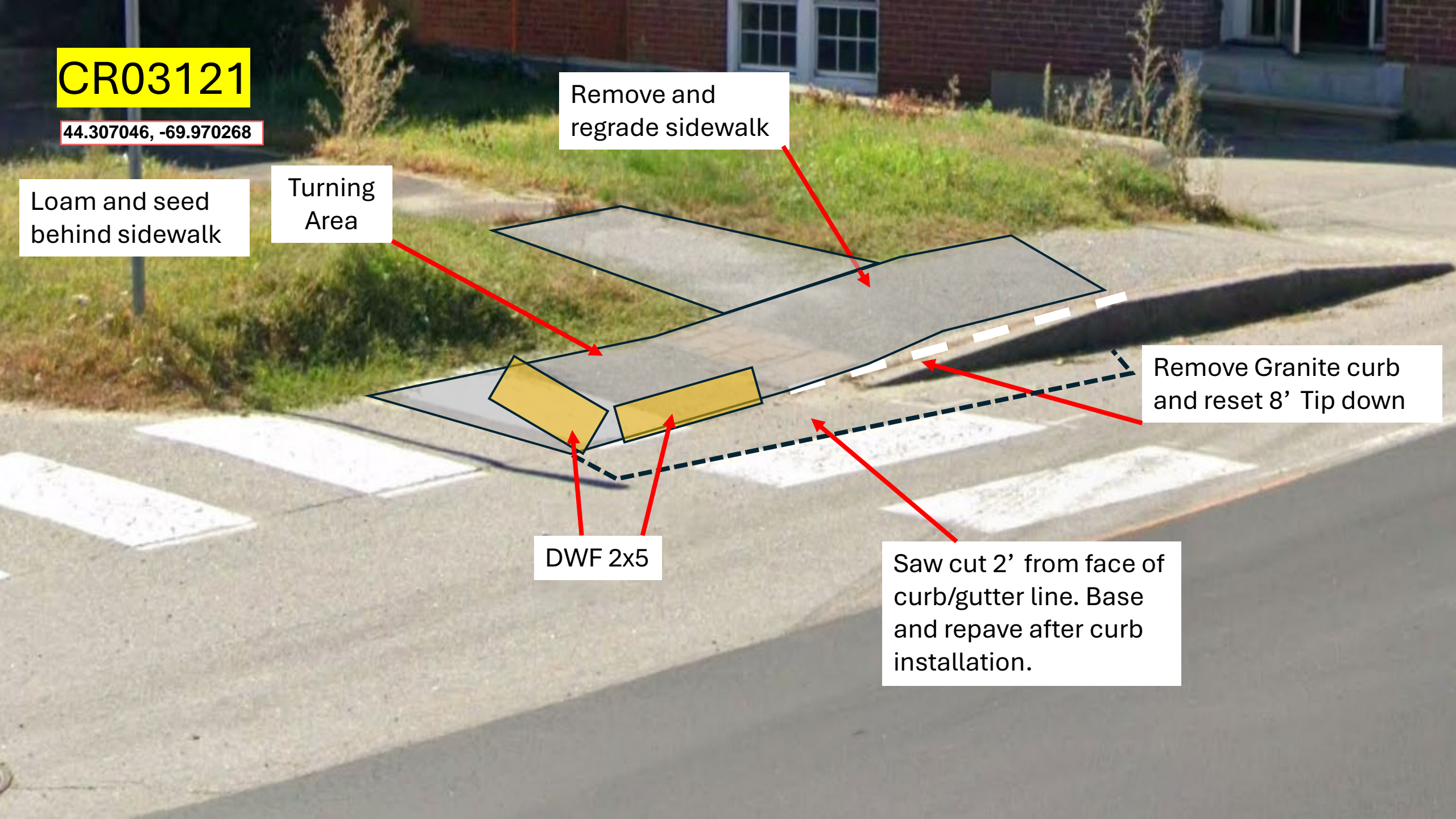
Turning  
Area

Remove and  
regrade sidewalk

Remove Granite curb  
and reset 8' Tip down

DWF 2x5

Saw cut 2' from face of  
curb/gutter line. Base  
and repave after curb  
installation.



CR03118

44.306963, -69.969414

Loam seed  
behind sidewalk

Remove and  
regrade sidewalk

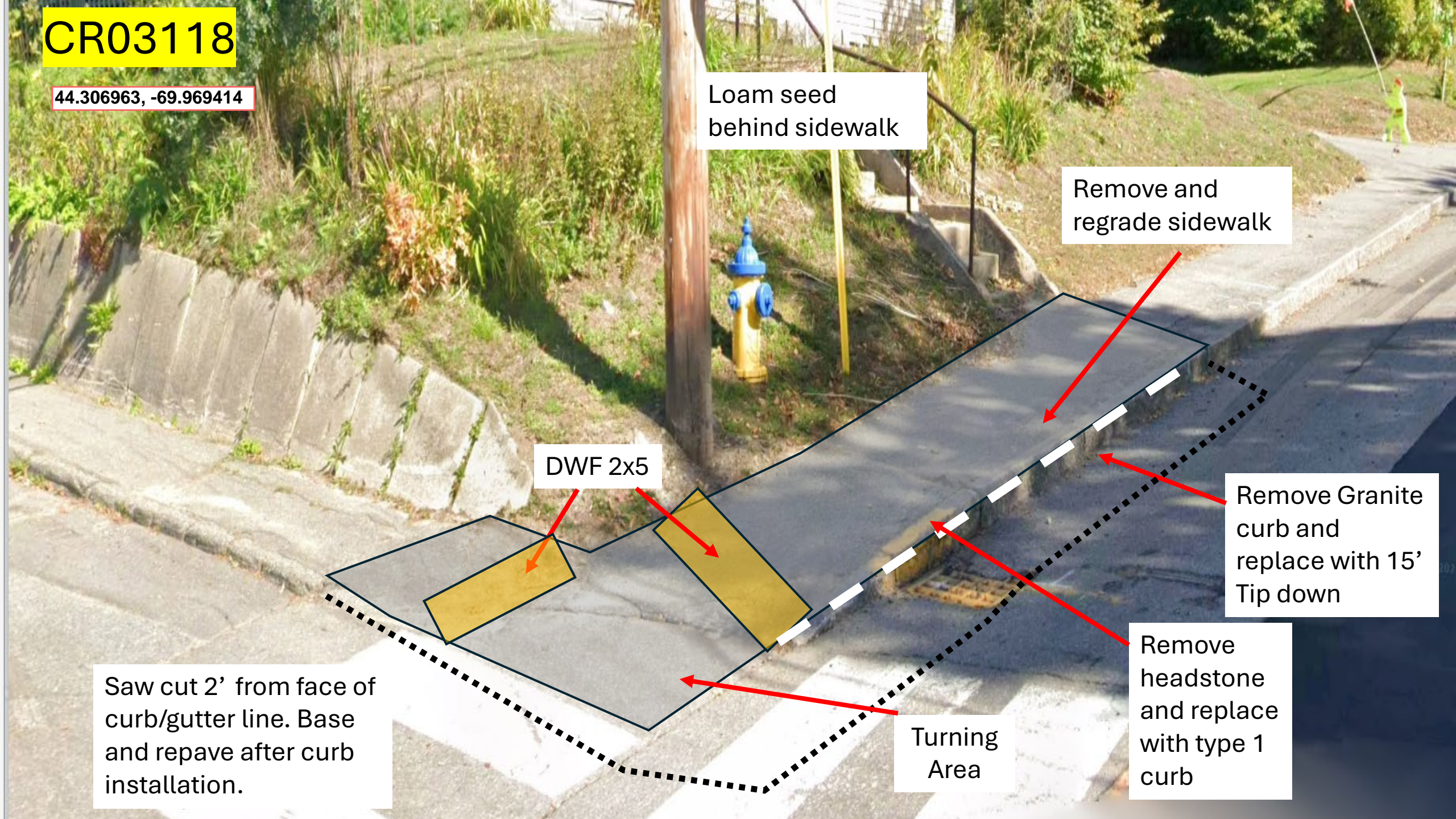
DWF 2x5

Remove Granite  
curb and  
replace with 15'  
Tip down

Remove  
headstone  
and replace  
with type 1  
curb

Saw cut 2' from face of  
curb/gutter line. Base  
and repave after curb  
installation.

Turning  
Area



CR03120

44.306856, -69.969472

DWF 2x6  
& Turning  
Area

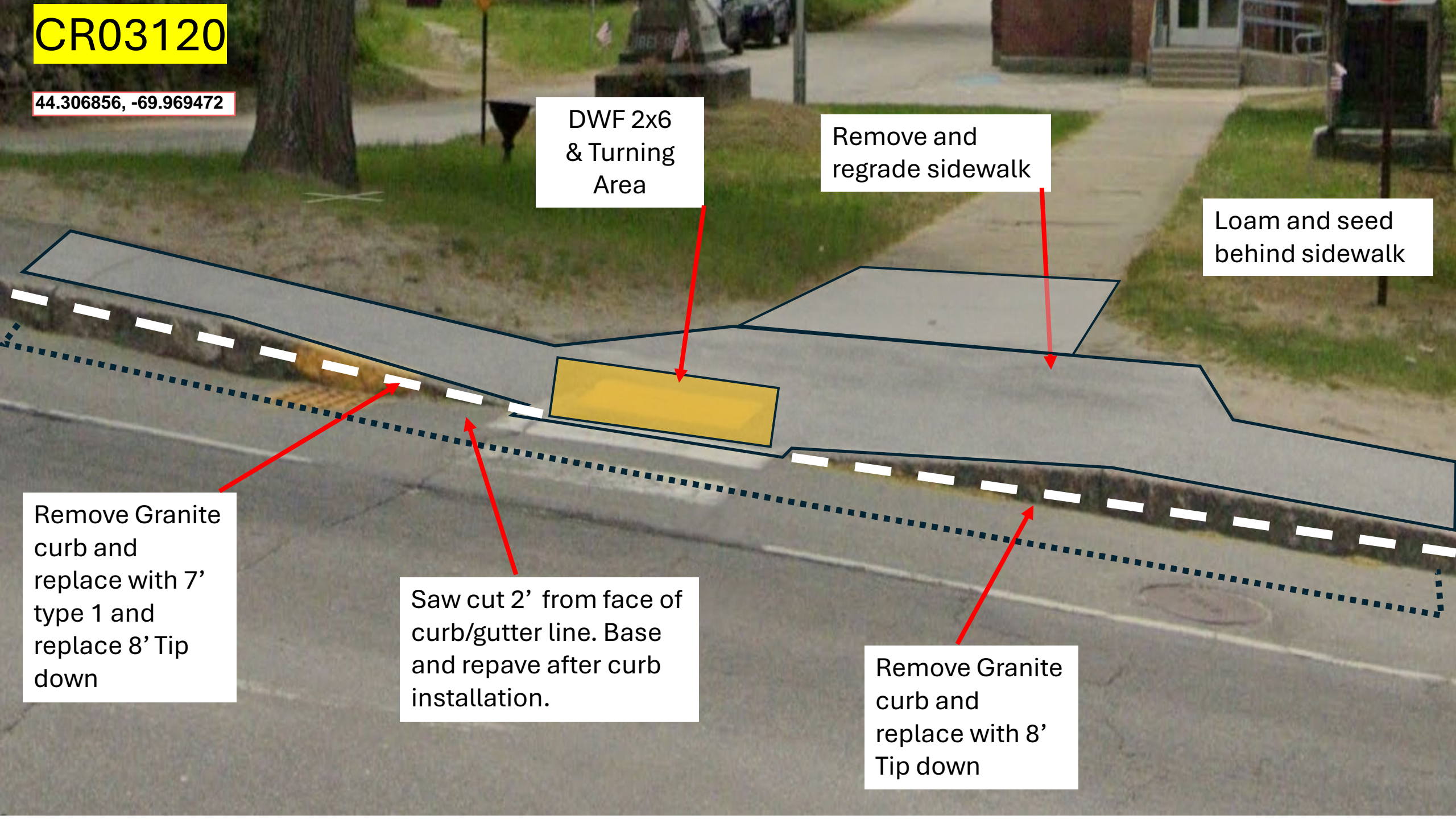
Remove and  
regrade sidewalk

Loam and seed  
behind sidewalk

Remove Granite  
curb and  
replace with 7'  
type 1 and  
replace 8' Tip  
down

Saw cut 2' from face of  
curb/gutter line. Base  
and repave after curb  
installation.

Remove Granite  
curb and  
replace with 8'  
Tip down



CR12928

44.306657, -69.967958

Loam seed behind sidewalk

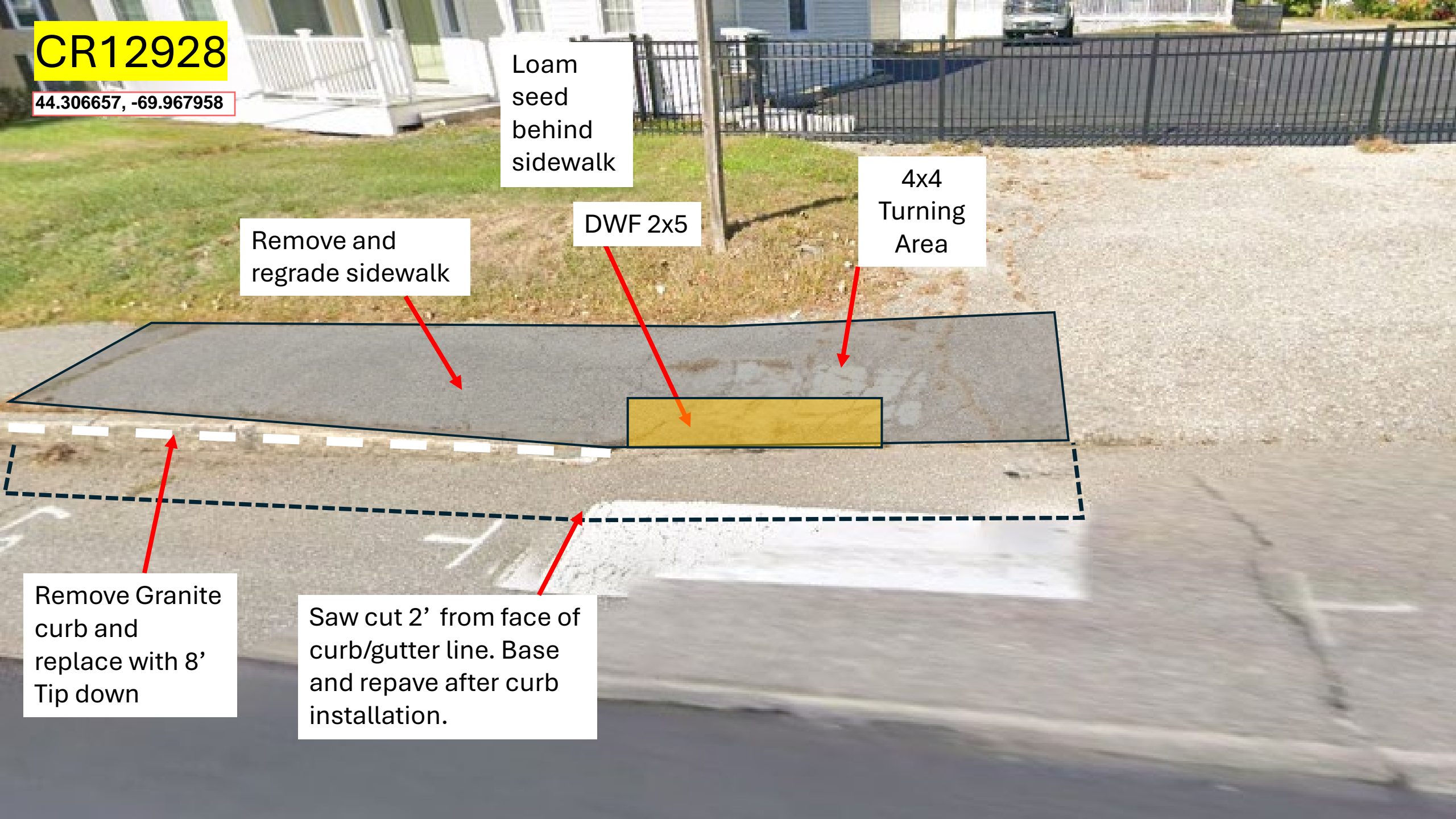
Remove and regrade sidewalk

DWF 2x5

4x4 Turning Area

Remove Granite curb and replace with 8' Tip down

Saw cut 2' from face of curb/gutter line. Base and repave after curb installation.



CR03115

44.306488, -69.967952

Remove curb and replace with 8' granite tip down.

Remove curb/loam and extend sidewalk to Main Street

Loam and seed

Remove and regrade sidewalk

DWF 2x4

Turning Area

Saw cut 2' from face of curb/gutter line. Base and repave after curb installation.

Remove 8' bituminous tip down then extend 17' curb, end with 8' tip down.