

# WIN 26598.00 Old Town Pedestrian Ramp Report



## **X-Walk to Bike Path Lt. (CROT - 1)**

Reconstruct Pedestrian Ramp

- Construct per SD 801 (14)
- Regrade and pave 6' x 5' sidewalk
- Install 6' x 2' Detectable Warning field

Latitude 44.92036°

Longitude -68.67675°

## **X-Walk to Bike Path Rt. (CROT - 2)**

Pedestrian Ramp requires no changes

Latitude 44.92028°

Longitude -68.67662°

## **X-Walk to Elementary Schl. Lt. (CR04563)**

Reconstruct Pedestrian Ramp

Construct per SD 801 (14)

- Remove 21' Slip Form Conc. Curb
- Reset 16' Slip Form Curb
- Regrade and pave 21' x 5' sidewalk
- Install 5' x 2' Detectable Warning field
- Remove X-walk and Stop Bar Markings

Latitude 44.92569°

Longitude -68.66873°

## **X-Walk to Elementary Schl. Rt. (CR04562)**

Construct Level Landing

- Construct Level Landing
- Regrade and pave 10' x 5' sidewalk
- Install 5' x 2' Detectable Warning field

Latitude 44.92560°

Longitude -68.66861°

# WIN 26598.00 Old Town Pedestrian Ramp Report



## X-walk at Annbar Ln. Lt. (CR04566)

### Reconstruct Pedestrian Ramp

- Construct per SD 801 (22)
- Cut existing Slip Form Curb to grade of 8' Tip Down
- Regrade and pave 12' x 4' sidewalk
- Install 4.5' x 2' Detectable Warning field
- Replace CB Grate With ADA compliant Frame and Cover.

Latitude 44.92864°

Longitude -68.66422°

## X-walk at Annbar Ln. Rt. (CR04567)

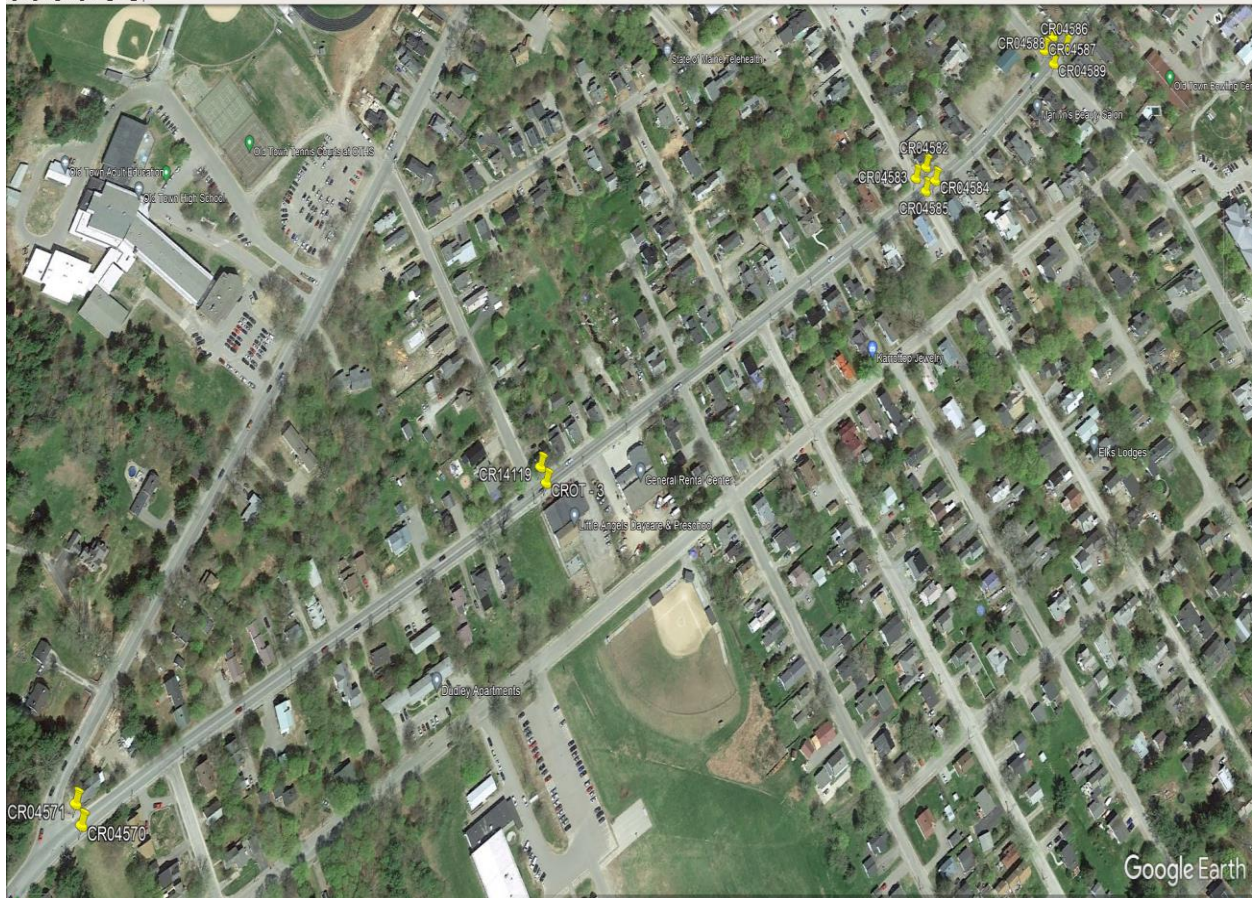
### Reconstruct Pedestrian Ramp

- Construct per SD 801 (27)
- Install 9' Slip Form Curb
- Remove 6' granite curb
- Regrade and pave 12' x 14' sidewalk
- Install 5' x 2' Detectable Warning field
- Coordinate Adjustment of SMH with town
- Construct 4' x 6' pad for x-walk beacon

Latitude 44.92856°

Longitude -68.66411°

# WIN 26598.00 Old Town Pedestrian Ramp Report



## Stillwater & Center Lt. (CR04571)

Reconstruct Pedestrian Ramp

- Construct per SD 801 (27)
- Regrade and pave 12' x 5' sidewalk
- Install 5' x 2' Detectable Warning field

Latitude 44.93229°

Longitude -68.65829°

## Stillwater & Center Rt. (CR04570)

Reconstruct Pedestrian Ramp

- Construct per SD 801 (14)
- Regrade and pave 18' x 5.5' sidewalk
- Install 9' x 2' Detectable Warning field

Latitude 44.93219°

Longitude -68.65826°

## Center St. & Elm St. Lt. (CR14119)

Reconstruct Pedestrian Ramp

- Construct per SD 801 (22) opt 3 configuration
- Remove and Reset 14' granite curb
- Install 8' x 2' (Radial) Detectable Warning field

Latitude 44.93299°

Longitude -68.65391°

## Center St. & Elm St. Rt. (CROT - 3)

Reconstruct Pedestrian Ramp

- Construct per SD 801 (14)
- Cut Slip Form Conc. Curb to match TD
- Regrade and pave 20' x 4.5' sidewalk
- Install 6.5' x 2' Detectable Warning field

Latitude 44.93290°

Longitude -68.65389°

# WIN 26598.00 Old Town Pedestrian Ramp Report

## Center St. & 4<sup>th</sup> St. Lt. (CR04583)

### Reconstruct Pedestrian Ramp

- Construct per SD 801 (22)
- Regrade and pave 4' x 7' sidewalk
- Install 7' x 2' Detectable Warning field
- Install regulatory pedestrian signs

Latitude 44.9365°

Longitude -68.64967°

## Center St. & 4<sup>th</sup> St. So. Lt. (CR04582)

### Reconstruct Pedestrian Ramp

- Construct per SD 801 (22) opt 3 configuration
- Remove and Reset 15' Slip Form Curb
- Regrade and pave 23' x 7' sidewalk
- Install 6' x 2' (Radial) Detectable Warning field
- Install regulatory pedestrian signs

Latitude 44.93360°

Longitude -68.64962°

## Center St. & Brunswick St. Lt. (CR04587)

### Reconstruct Pedestrian Ramp

- Construct per SD 801 (22)
- Remove and Reset 15' Slip Form curb
- Regrade and pave 20' x 5.5' sidewalk
- Install 6.5' x 2' Detectable Warning field
- Install regulatory pedestrian signs

Latitude 44.93409°

Longitude -68.64794°

## Center St. & Brunswick St. So. Lt. (RC04588)

### Reconstruct Pedestrian Ramp

- Construct per SD 801 (22) opt 3 configuration
- Regrade and pave 30' x 5.5' sidewalk
- Install 10' x 2' (Radial) Detectable Warning field

Latitude 44.93415°

Longitude -68.64779°

## Center St. & 4<sup>th</sup> Rt. (CR04585)

### Reconstruct Pedestrian Ramp

- Construct per SD 801 (22)
- Regrade and pave 4' x 7' sidewalk
- Install 7' x 2' Detectable Warning field

Latitude 44.93558°

Longitude -68.64962°

## Center St. & 4<sup>th</sup> St. Rt. (CR04584)

### Reconstruct Pedestrian Ramp

- Construct per SD 801 (22) opt 3 configuration
- Remove and Reset 16' Slip Form curb
- Regrade and pave 13' x 5' sidewalk
- Install 10' x 2' Detectable Warning field
- Construct 4' x 6' pad for x-walk beacon.

Latitude 44.423484°

Longitude -68.65268°

## Center St. & Brunswick St. Rt. (CR04589)

### Reconstruct Pedestrian Ramp

- Construct per SD 801 (22) option 3 configuration
- Remove and Reset 11' Bit. Curb (Brunswick)
- Regrade and pave 17' x 5' sidewalk
- Install 5' x 2' Detectable Warning field

Latitude 44.93399°

Longitude -68.64789°

## Center St. & Brunswick St. So. Lt. (CR04586)

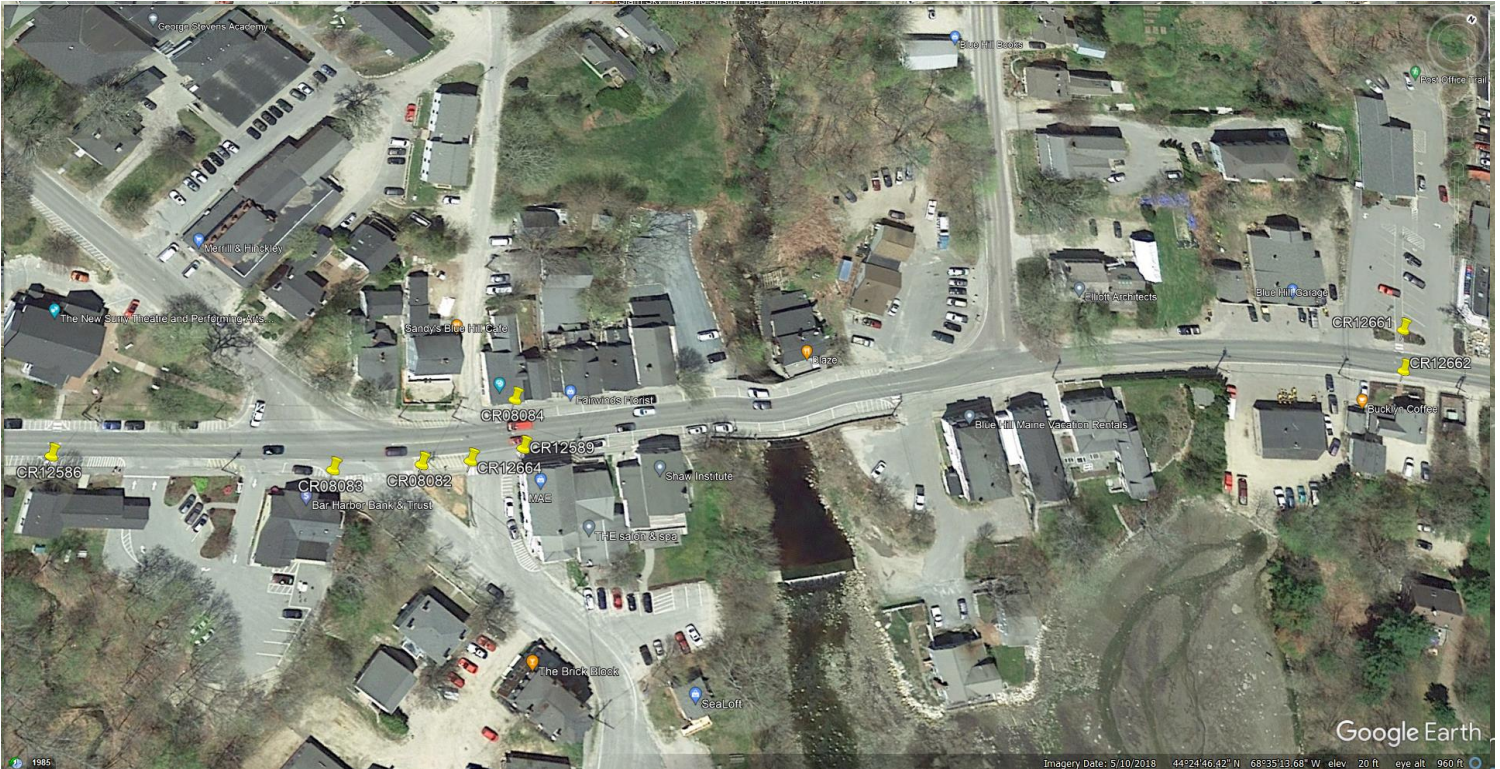
### Reconstruct Pedestrian Ramp

- Construct per SD 801 (22) option 3 configuration
- Remove and Reset 9' Bit. Conc. curb
- Regrade and pave 18' x 6' sidewalk
- Install 10' x 2' (Radial) Detectable Warning field
- Install regulatory pedestrian signs

Latitude 44.93406°

Longitude -68.6477°

# WIN 26598.00 Blue Hill ADA Pedestrian Ramp Report



## Mid-Block Post Office Rt. (CR12661)

### Reconstruct Pedestrian Ramp

- Construct per SD 801 (13)
- Install 6' x 2' Detectable Warning field
- Install regulatory pedestrian signs

Latitude 44.41445°

Longitude -68.58585°

## Mid-Block Post Office Lt. (CR12662)

### Reconstruct Pedestrian Ramp

- Construct per SD 801 (13)
- Remove and reset 15' granite curb
- Regrade and pave 20' x 4' sidewalk
- Install 5' x 2' Detectable Warning field
- Install regulatory pedestrian signs

Latitude 44.41436°

Longitude -68.58580°

## Main & Mill St Rt. (CR08084)

### Reconstruct Pedestrian Ramp

- Construct per SD 801 (13)
- Remove and reset 15' granite curb
- Regrade and pave 20' x 5' sidewalk
- Install 5' x 2' Detectable Warning field
- Install regulatory pedestrian signs

Latitude 44.41324°

Longitude -68.58805°

## Water St. 1<sup>st</sup> Entrance Lt. (CR12589 & CR08081)

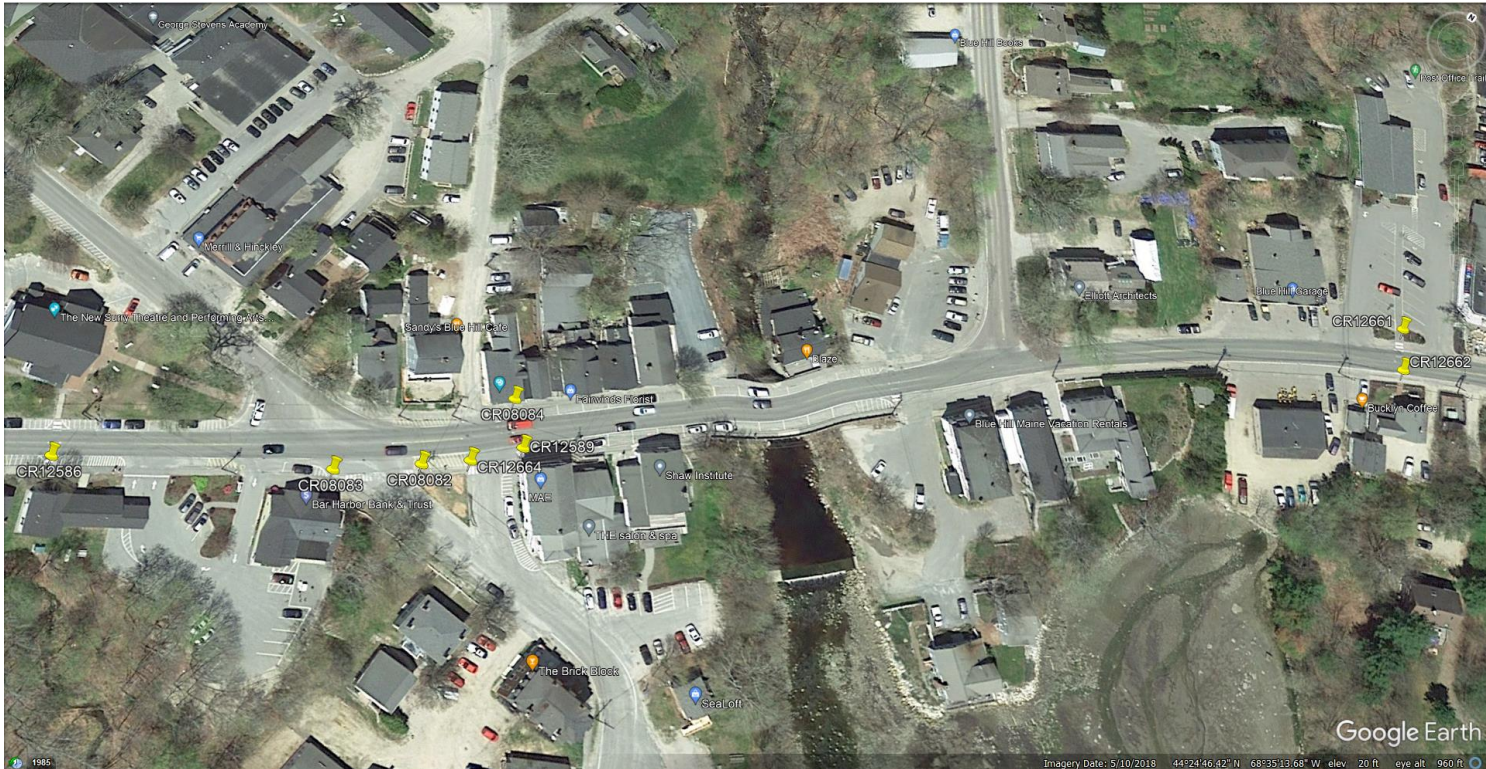
### Reconstruct Pedestrian Ramp

- Construct per SD 801 (20)
- Remove and reset 14' granite curb
- Regrade and pave 22' x 5' sidewalk
- Install 5.5' x 2' Detectable Warning field (Radial)
- Install regulatory pedestrian signs

Latitude 44.41317°

Longitude -68.58794°

# WIN 26598.00 Blue Hill ADA Pedestrian Ramp Report



## Water St. 1<sup>st</sup> Entrance Rt. (CR12664)

Reconstruct Pedestrian Ramp

- Construct per SD 801 (22)
- Remove & reset 19' Granite Curb
- Regrade is included in 2<sup>nd</sup> Ent. LT.
- Install 5' x 2' Detectable Warning field

Latitude 44.41373°

Longitude -68.588046°

## Water St. 2<sup>nd</sup> Entrance Rt. (CR08083)

Reconstruct Pedestrian Ramp

- Construct per SD 801 (22)
- Remove and reset 15' granite curb
- Regrade and pave 20' x 5' sidewalk
- Install 5' x 2' Detectable Warning field

Latitude 44.41324°

Longitude -68.58805°

## Water St. 2<sup>nd</sup> Entrance Lt. (CR08082)

Reconstruct Pedestrian Ramp

- Construct per SD 801 (22)
- Reset 17' granite curb
- Reconstruct sidewalk to min. 4.5 width
- Regrade and pave 39' x 4' sidewalk
- Install 6' x 2' Detectable Warning field

Latitude 44.413017°

Longitude -68.58815°

## Bar Harbor Bank to Town Hall Lt. (CR12586)

Reconstruct Pedestrian Ramp

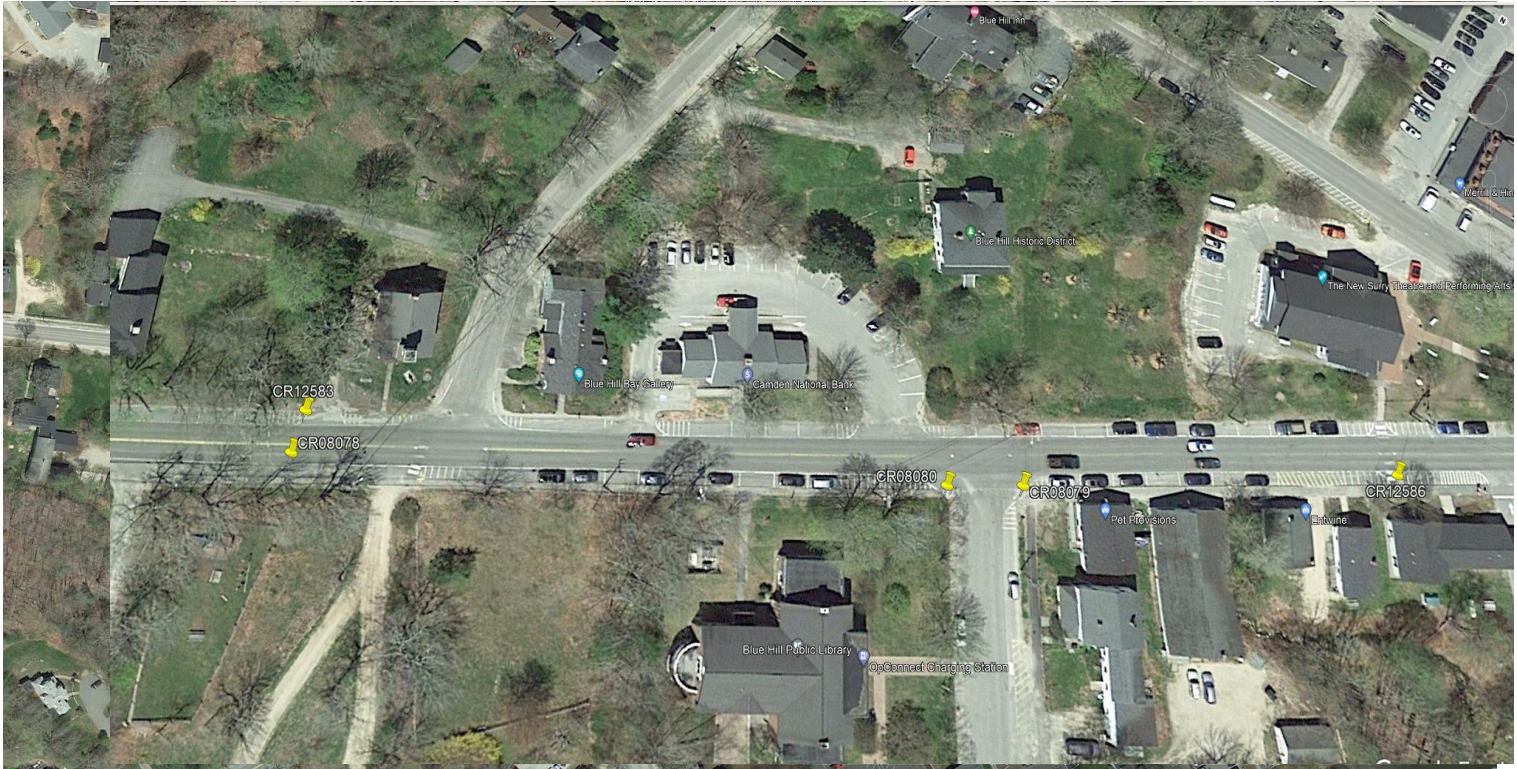
- Construct per SD 801 (22)
- Remove and reset 18' granite curb
- Regrade and pave 23' x 5' sidewalk
- Install 5' x 2' Detectable Warning field
- Install regulatory pedestrian signs

1.

Latitude 44.41262°

Longitude -68.58908°

# WIN 26598.00 Blue Hill ADA Pedestrian Ramp Report



## **Parker Point Rd. Rt. (CR08080)**

### Reconstruct Pedestrian Ramp

- Construct per SD 801 (22)
- Remove and reset 22' granite curb
- Install 22' Bit. Conc. curb
- Regrade and pave 20' x 5' sidewalk
- Install 6' x 2' Detectable Warning field

Latitude 44.41221°

Longitude -68.58995°

## **Parker Point Rd. Lt. (CR08079)**

### Reconstruct Pedestrian Ramp

- Construct per SD 801 (13)
- Remove 30' Bit. Conc. curb
- Install 30' Bit. Conc. curb
- Regrade and pave 35' x 5' sidewalk
- Install 5' x 2' Detectable Warning field

Latitude 44.41170°

Longitude -68.59122°

## **Beacon just past High St. Rt. (CR12583)**

### Reconstruct Pedestrian Ramp

- Construct per SD 801 (27)
- Regrade and pave 6' x 5' sidewalk
- Install 5' x 2' Detectable Warning
- 

Latitude 44.41176°

Longitude -68.59126°

## **Beacon just past High St. Lt. (CR08078)**

### Reconstruct Pedestrian Ramp

- Construct per SD 801 (13)
- Remove and reset 30' Bit. Conc. curb
- Regrade and pave 35' x 5' sidewalk
- Install 5' x 2' Detectable Warning
- 

Latitude 44.41170°

Longitude -68.591

# WIN 26598.00 Blue Hill ADA Pedestrian Ramp Report



## **Rotary Beech Hill Rd. Lt. (CR12575)**

### Reconstruct Pedestrian Ramp

- Construct per SD 801 (27)
- Remove DWF in Center Island & repave
- Remove surplus pavement beyond DWF
- Install regulatory pedestrian signs

Latitude 44.4082°

Longitude -68.5979°

## **Rotary 15 South / 176 West Rt. (CR12574)**

### Reconstruct Pedestrian Ramp

- Construct per SD 801 (27)
- Remove surplus pavement beyond DWF
- Remove DWF in Center Island & repave
- Install regulatory pedestrian signs

Latitude 44.4083°

Longitude -68.5977°

## **Rotary 15 North / 176 East Lt. (CR08077)**

### Reconstruct Pedestrian Ramp

- Construct per SD 801 (27)
- Remove surplus pavement beyond DWF
- Install regulatory pedestrian signs

Latitude 44.4083°

Longitude -68.5974°

## **Rotary 15 North / 176 East Rt. (CR12580)**

### Reconstruct Pedestrian Ramp

- Construct per SD 801 (13)
- Remove surplus pavement beyond DWF
- Install regulatory pedestrian signs

• Latitude 44.4082°

• Longitude -68.5972°

# WIN 26598.00 Blue Hill ADA Pedestrian Ramp Report



## **Rotary 175 South / 172 South Lt. (CR12579)**

Reconstruct Pedestrian Ramp

- Construct per SD 801 (27)
- Remove surplus pavement beyond DWF
- Remove DWF in center island and repave
- Install regulatory pedestrian signs

Latitude 44.4079°

Longitude -68.5972°

## **Rotary 15 South / 176 West Lt. (CR12577)**

Reconstruct Pedestrian Ramp

- Construct per SD 801 (27)
- Remove surplus pavement beyond DWF
- Install regulatory pedestrian signs

Latitude 44.4078°

Longitude -68.5978°

## **Rotary 175 South / 172 South Rt. (CR12578)**

Reconstruct Pedestrian Ramp

- Construct per SD 801 (13)
- Remove surplus pavement beyond DWF
- Remove DWF in center island and repave
- Install regulatory pedestrian signs
- 

Latitude 44.4080°

Longitude -68.5975°

## **Rotary 15 South / 172 West Rt. (CR12576)**

Reconstruct Pedestrian Ramp

- Construct per SD 801 (27)
- Remove surplus pavement beyond DWF
- Install regulatory pedestrian signs

Latitude 44.4079°

Longitude -68.5979°

# WIN 26598.00 Lincoln ADA Pedestrian Ramp Report



## **Park Ave. to Hardware Store Lt. (CR05526)**

Reconstruct Pedestrian Ramp

- Construct per SD 801 (27)
- Relocate Curb Ramp 62 feet East
- Remove & Reset 8' Granite Curb
- Regrade and pave 22' x 4' sidewalk
- Install 5' x 2' Detectable Warning field
- Install regulatory pedestrian signs

Latitude 45.36285°

Longitude -68.51392°

## **Park Ave. to Hardware Store Rt. (CR05525)**

Reconstruct Pedestrian Ramp

- Construct per SD 801 (27)
- Remove and reset 15' granite curb
- Regrade and pave 30' x 5' sidewalk
- Install 5' x 2' Detectable Warning field
- Install regulatory pedestrian signs

Latitude 45.36276°

Longitude -68.51388°

## **Perry across Rt. 2 Lt. (CR05532)**

Reconstruct Pedestrian Ramp

- Construct per SD 801 (27)
- Remove and reset 9' granite curb
- Regrade and pave 16' x 5' sidewalk
- Install 5' x 2' Detectable Warning field
- Install regulatory pedestrian signs
- 

Latitude 45.3630°

Longitude -68.50732°

## **Perry across Rt. 2 Rt. (CR05531)**

Reconstruct Pedestrian Ramp

- Construct per SD 801 (20)
- Remove and reset 12' granite curb
- Regrade and pave 22' x 5' sidewalk
- Install 10' x 2' Detectable Warning field (Radial)
- Install 1 regulatory pedestrian signs

Latitude 45.36292°

Longitude -68.50735°

# WIN 26598.00 Lincoln ADA Pedestrian Ramp Report



## LINCOLN ROUTE 2 To WINN

### Libby St. Across Rt. 2 Lt. (CRL - 1)

Reconstruct Pedestrian Ramp

- Construct per SD 801 (27)
- Remove & reset 11' Granite Curb
- Regrade and Pave 16' x 5'.
- Install 5' x 2' Detectable Warning field
- Install regulatory pedestrian signs

Latitude 45.37106°

Longitude -68.50248°

### Libby St. Across RT. 2 Rt. (CRL - 2)

Reconstruct Pedestrian Ramp

- Construct per SD 801 (20)
- Replace and reset 15' granite curb
- Regrade and pave 15' x 4' sidewalk
- Install 5' x 2' Detectable Warning field
- Install regulatory pedestrian signs

Latitude 45.37109°

Longitude -68.50259°

# WIN 26598.00 Lincoln ADA Pedestrian Ramp Report

## LINCOLN ROUTE 6 (LEE ST.)

### Clay St Across RT. 6 Lt. (CR06515)

#### Reconstruct Pedestrian Ramp

- Construct per SD 801 (20)
- Install 30' new granite curb
- Regrade and pave 30' x 5' sidewalk
- Install 5' x 2' Detectable Warning field
- Install regulatory pedestrian signs

Latitude 45.36725°

Longitude -68.50072°

### Libby St. Across Rt. 6 Lt. (CR06520)

#### Reconstruct Pedestrian Ramp

- Construct per SD 801 (22)
- Remove and reset 20' Bit. Conc curb
- Regrade and pave 20' x 5' sidewalk
- Install 5' x 2' Detectable Warning field
- Install regulatory pedestrian signs

Latitude 45.36899°

Longitude -68.49839°

### Clay St Across RT. 6 Rt. (CR06516)

#### Reconstruct Pedestrian Ramp

- Construct per SD 801 (13)
- Replace 19' granite curb with new granite curb.
- Regrade and pave 24' x 5' sidewalk
- Install 5' x 2' Detectable Warning field
- Install regulatory pedestrian signs

Latitude 45.36716°

Longitude -68.50058°

### Libby St. Across Rt. 6 Rt. (CR06521)

#### Reconstruct Pedestrian Ramp

- Construct per SD 801 (27)
- Replace 11' granite curb with new granite curb.
- Regrade and pave 31' x 5' sidewalk
- Install 5' x 2' Detectable Warning
- Install regulatory pedestrian signs
- 

Latitude 45.36892°

Longitude -68.49828°

•