

# WIN 26630.05 Machias Pedestrian Ramp Report



## Kennebec Road 79+53 Rt. (CR05662)

Reconstruct Pedestrian Ramp

- Construct per SD 801 (20)
- Remove and reset 24' granite curb
- Regrade and pave 30' x 4' sidewalk
- Install 6' x 2' Detectable Warning field

Latitude 44.42495°

Longitude -67.28663°

## Kennebec Road 80+21 Rt. (CR14948)

Reconstruct Pedestrian Ramp

- Construct per SD 801 (20)
- Remove and reset 24' granite curb
- Regrade and pave 30' x 4' sidewalk
- Install 6.5' x 2' Detectable Warning field

Latitude 44.42543°

Longitude -67.28603°

## Mid-Block 81+34 Lt. (CR14947)

Reconstruct Pedestrian Ramp

- Construct per SD 801 (27)
- Remove and reset 21' granite curb
- Regrade and pave 16' x 6' sidewalk
- Install 6' x 2' Detectable Warning field
- Install regulatory pedestrian signs

Latitude 44.42655°

Longitude -67.28565°

## Mid-Block 81+34 Rt. (CR14946)

Reconstruct Pedestrian Ramp

- Construct per SD 801 (14)
- Remove and reset 24' granite curb
- Regrade and pave 20' x 6' sidewalk
- Install 6' x 2' Detectable Warning field
- Install regulatory pedestrian signs

Latitude 44.42635°

Longitude -67.28504°

# WIN 26630.05 Machias Pedestrian Ramp Report

## Hudson Boulevard 86+45 Lt. (CR14945)

### Reconstruct Pedestrian Ramp

- Construct per SD 801 (20)
- Remove and reset 14' granite curb
- Regrade and pave 30' x 4.5' sidewalk
- Install 5' x 2' Detectable Warning field

Latitude 44.421047°

Longitude -67.28094°

## Hudson Boulevard 87+09 Lt. (CR14944)

### Reconstruct Pedestrian Ramp

- Construct per SD 801 (20)
- Remove and reset 25' granite curb
- Regrade and pave 30' x 4.5' sidewalk
- Install 6' x 2' Detectable Warning field

Latitude 44.421088°

Longitude -67.28041°

## Hannaford 97+25 Lt. (CR14943)

### Reconstruct Pedestrian Ramp

- Construct per SD 801 (14)
- Remove and reset 20' granite curb
- Regrade and pave 24' x 4.5' sidewalk
- Install 5' x 2' Detectable Warning field

Latitude 44.421829°

Longitude -67.275078°

## Walgreens 97+25 Rt. (CR14942)

### Reconstruct Pedestrian Ramp

- Construct per SD 801 (20)
- Remove and reset 25' granite curb
- Remove existing concrete sidewalk.
- Regrade and place concrete 18' x 6' sidewalk per SD 608 (01)
- Install 5' x 2' Detectable Warning field

Latitude 44.421800°

Longitude -67.275020°

## Prescott Dr. 98+88 Lt. (CR05663)

### Reconstruct Pedestrian Ramp

- Construct per SD 801 (22)
- Install 20' granite curb
- Regrade and pave 20' x 4.5' sidewalk
- Install 4.5' x 2' Detectable Warning field

Latitude 44.421954°

Longitude -67.274925°

## Prescott Dr. 99+47 Lt. (CR14845)

### Reconstruct Pedestrian Ramp

- Construct per SD 801 (22)
- Install 8' granite curb
- Remove and reset 9' granite curb
- Regrade and pave 17' x 4.5' sidewalk
- Install 4.5' x 2' Detectable Warning field

Latitude 44.421984°

Longitude -67.274885°

# WIN 26630.05 Machias Pedestrian Ramp Report



## **Ball Field 104+06 Rt. (RAMP 1)**

Reconstruct Pedestrian Ramp

- Construct per SD 801 (27)
- Install 8' granite curb
- Regrade and pave 14' x 4.5' sidewalk
- Install 6' x 2' Detectable Warning field

Latitude 44.422287°

Longitude -67.274387°

## **Harwood Rd. 104+06 Lt. (CR05665)**

Reconstruct Pedestrian Ramp

- Construct per SD 801 (20)
- Regrade and pave 20' x 4.5' sidewalk
- Install 6' x 2' Detectable Warning field

Latitude 44.422320°

Longitude -67.274438°

## **Harwood Rd. 104+63 Lt. (CR05666)**

Reconstruct Pedestrian Ramp

- Construct per SD 801 (20)
- Remove and Reset 14' granite curb
- Regrade and pave 20' x 4.5' sidewalk
- Install 6' x 2' Detectable Warning field

Latitude 44.422359°

Longitude -67.274383°

## **Berry Ave. 108+54 Rt. (CR05668)**

Reconstruct Pedestrian Ramp

- Construct per SD 801 (22)
- Remove and Reset 8' granite curb
- Regrade and pave 7' x 4.5' sidewalk
- Install 4' x 2' Detectable Warning field

Latitude 44.422614°

Longitude -67.273963°

# WIN 26630.05 Machias Pedestrian Ramp Report

## **Berry Ave. 108+94 Rt. (CR05667)**

### Reconstruct Pedestrian Ramp

- Construct per SD 801 (22)
- Remove and Reset 8' granite curb
- Regrade and pave 7' x 4.5' sidewalk
- Install 4' x 2' Detectable Warning field

Latitude 44.422644°

Longitude -67.273930°

## **Salem St. 110+70 Lt. (CR05670)**

### Reconstruct Pedestrian Ramp

- Construct per SD 801 (20)
- Remove and Reset 25' granite curb
- Regrade and pave 30' x 4' sidewalk
- Install 6' x 2' Detectable Warning field

Latitude 44.422809°

Longitude -67.273807°

## **Salem St. 111+00 Lt. (CR05669)**

### Reconstruct Pedestrian Ramp

- Construct per SD 801 (20)
- Remove and Reset 20' granite curb
- Regrade and pave 25' x 6' sidewalk
- Install 6' x 2' Detectable Warning field

Latitude 44.422842°

Longitude -67.273772°

## **Bedford St. 116+88 Lt. (RAMP 2)**

### Reconstruct Pedestrian Ramp

- Construct per SD 801 (20)
- Remove and Reset 20' granite curb
- Regrade and pave 25' x 4.5' sidewalk
- Install 6' x 2' Detectable Warning field

Latitude 44.423283°

Longitude -67.273312°

## **Bedford St. 117+38 Lt. (RAMP 3)**

### Reconstruct Pedestrian Ramp

- Construct per SD 801 (20)
- Remove and Reset 20' granite curb
- Regrade and pave 25' x 4' sidewalk
- Install 6' x 2' Detectable Warning field

Latitude 44.423330°

Longitude -67.273288°

## **Thomas Giles Building 119+08 Lt. (CR14287)**

### Reconstruct Pedestrian Ramp

- Construct per SD 801 (27)
- Remove and Reset 10' granite curb
- Regrade and pave 17' x 4' sidewalk
- Install 6' x 2' Detectable Warning field
- Construct 4' x 6' pad for x-walk beacon.

Latitude 44.423484°

Longitude -67.273255°

## **University 119+08 Rt. (CR15052)**

### Reconstruct Pedestrian Ramp

- Construct per SD 801 (20)
- Place 16' Bit. curb
- Regrade and pave 25' x 5' sidewalk
- Install 8' x 2' Detectable Warning field
- Construct 8' x 8' pad for x-walk beacon

Latitude 44.423477°

Longitude -67.273187°

## **Freemont St. 120+97 Lt. (CR05673)**

### Reconstruct Pedestrian Ramp

- Construct per SD 801 (20)
- Remove and Reset 20' granite curb
- Regrade and pave 25' x 4.5' sidewalk
- Install 5' x 2' Detectable Warning field

Latitude 44.423666°

Longitude -67.273275°

# WIN 26630.05 Machias Pedestrian Ramp Report

## Freemont St. 121+37 Lt. (CR05674)

### Reconstruct Pedestrian Ramp

- Construct per SD 801 (20)
- Remove and Reset 20' granite curb
- Regrade and pave 25' x 4.5' sidewalk
- Install 5' x 2' Detectable Warning field

Latitude 44.423703°

Longitude -67.273268°

## Hill St. 122+11 Lt. (CR14701)

### Reconstruct Pedestrian Ramp

- Construct per SD 801 (20)
- Remove and Reset 20' granite curb
- Regrade and pave 25' x 4.5' sidewalk
- Install 5' x 2' Detectable Warning field

Latitude 44.423790°

Longitude -67.273242°

## Hill St. 122+55 Lt. (CR13717)

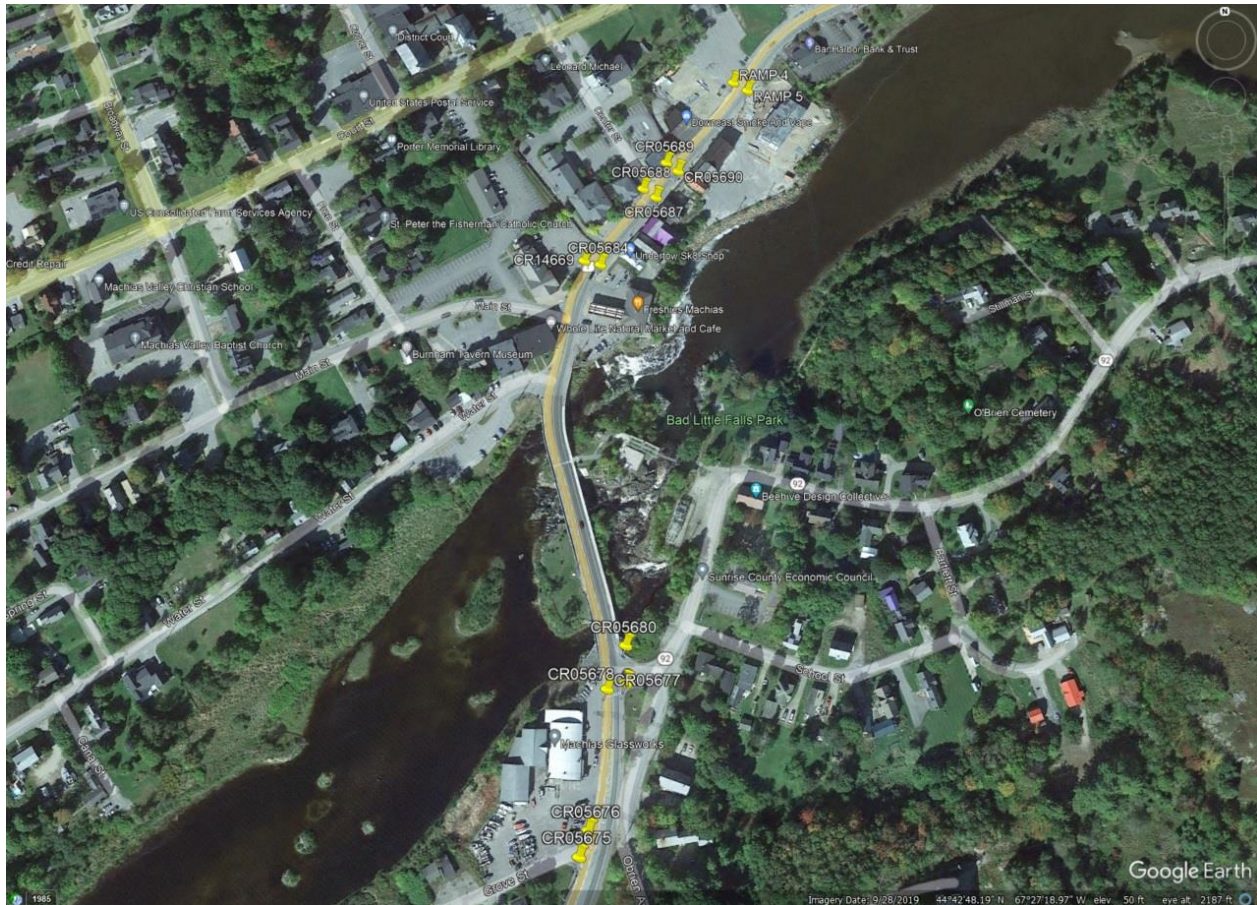
### Reconstruct Pedestrian Ramp

- Construct per SD 801 (20)
- Remove and Reset 20' granite curb
- Regrade and pave 25' x 4.5' sidewalk
- Install 5' x 2' Detectable Warning field

Latitude 44.423813°

Longitude -67.273228°

# WIN 26630.05 Machias Pedestrian Ramp Report



## Grove St. 125+66 Lt. (CR05675)

### Reconstruct Pedestrian Ramp

- Construct per SD 801 (20)
- Remove and Reset 30' granite curb
- Regrade and pave 35' x 4.5' sidewalk
- Install 5' x 2' Detectable Warning field

Latitude 44.424096°

Longitude -67.273024°

## Grove St. 126+10 Lt. (CR05676)

### Reconstruct Pedestrian Ramp

- Construct per SD 801 (20)
- Remove and Reset 14' granite curb
- Regrade and pave 20' x 4.5' sidewalk
- Install 5' x 2' Detectable Warning field

Latitude 44.424140°

Longitude -67.272998°

## Ames St. 129+00 Lt. (CR05677)

### Reconstruct Pedestrian Ramp

- Construct per SD 801 (27)
- Remove and Reset 31' granite curb
- Regrade and pave 21' x 4.5' sidewalk
- Install 5' x 2' Detectable Warning field

Latitude 44.424392°

Longitude -67.272932°

## Ames St. 129+00 Rt. (CR05678)

### Reconstruct Pedestrian Ramp

- Construct per SD 801 (20)
- Remove and Reset 22' granite curb
- Regrade and pave 27' x 4.5' sidewalk
- Install 5' x 2' Detectable Warning field

Latitude 44.424402°

Longitude -67.272881°

# WIN 26630.05 Machias Pedestrian Ramp Report

## Ames St. 129+71 Rt. (CR05680)

### Reconstruct Pedestrian Ramp

- Construct per SD 801 (20)
- Remove and Reset 25' granite curb
- Regrade and pave 30' x 4.5' sidewalk
- Install 5' x 2' Detectable Warning field

Latitude 44.424472°

Longitude -67.272876°

## Education Center 137+83 Lt. (CR14669)

### Reconstruct Pedestrian Ramp

- Construct per SD 801 (21)
- Remove and Reset 22' granite curb
- Remove existing concrete ADA ramp
- Regrade and place concrete 13' x 22' sidewalk per SD 608 (01)
- Install 5' x 2' Detectable Warning field
- Install regulatory pedestrian signs

Latitude 44.425272°

Longitude -67.272939°

## Freshies 137+83 Rt. (CR05684)

### Reconstruct Pedestrian Ramp

- Construct per SD 801 (21)
- Remove and Reset 22' granite curb
- Remove existing concrete ADA ramp
- Regrade and place concrete 15' x 30' sidewalk per SD 608 (01)
- Install 5' x 2' Detectable Warning field
- Install regulatory pedestrian signs

Latitude 44.425262°

Longitude -67.272892°

## Old Post Office 139+75 Lt. (CR05688)

### Reconstruct Pedestrian Ramp

- Remove existing concrete ADA ramp
- Place concrete 5' x 8' sidewalk per SD 608 (01)
- Install 4' x 2' Detectable Warning field
- Install regulatory pedestrian signs

Latitude 44.425435°

Longitude -67.272752°

## Opposite Post Office 139+75 Rt. (CR05687)

### Reconstruct Pedestrian Ramp

- Construct per SD 801 (21)
- Remove and Reset 30' granite curb
- Remove existing concrete ADA ramp
- Place concrete 35' x 13' sidewalk per SD 608 (01)
- Install 5' x 2' Detectable Warning field
- Install regulatory pedestrian signs

Latitude 44.425414°

Longitude -67.272715°

## Bangor Savings 140+60 Lt. (CR05689)

### Reconstruct Pedestrian Ramp

- Construct per SD 801 (14)
- Remove and Reset 30' granite curb
- Remove existing concrete ADA ramp
- Place concrete 30' x 10' sidewalk per SD 608 (01)
- Install 5' x 2' Detectable Warning field
- Install regulatory pedestrian signs

Latitude 44.425496°

Longitude -67.272677°

# WIN 26630.05 Machias Pedestrian Ramp Report

## Opp. Bangor Savings 140+60 Rt. (CR05690)

### Reconstruct Pedestrian Ramp

- Construct per SD 801 (21)
- Remove and Reset 30' granite curb
- Remove existing concrete ADA ramp
- Place concrete 30' x 10' sidewalk per SD 608 (01)
- Install 5' x 2' Detectable Warning field
- Install regulatory pedestrian signs

Latitude 44.425475°

Longitude -67.272643°

## Machias Savings Oper. Ctr. 143+15 Lt.

### (RAMP 4)

### Reconstruct Pedestrian Ramp

- Construct per SD 801 (14)
- Remove and Reset 17' granite curb
- Regrade and pave 22' x 5' sidewalk
- Install 5' x 2' Detectable Warning field

Latitude 44.425688°

Longitude -67.272451°

## Machias Savings Operations Center 143+15

### Rt. (RAMP 5)

### Reconstruct Pedestrian Ramp

- Construct per SD 801 (14)
- Remove and Reset 14' granite curb
- Regrade and pave 20' x 5' sidewalk
- Install 5' x 2' Detectable Warning field

Latitude 44.425667°

Longitude -67.272409°

# WIN 26630.05 Machias Pedestrian Ramp Report



## Hing Garden 146+80 Lt. (CR14605)

### Reconstruct Pedestrian Ramp

- Construct per SD 801 (27)
- Remove and Reset 24' granite curb
- Regrade and pave 24' x 5' sidewalk
- Install 5' x 2' Detectable Warning field
- Install regulatory pedestrian signs

Latitude 44.425928°

Longitude -67.272056°

## Helen's 164+65 Rt. (CR14893)

### Reconstruct Pedestrian Ramp

- Construct per SD 801 (14)
- Remove 21' of existing bituminous curb
- Place 16' of bituminous curb
- Regrade and pave 21' x 5' sidewalk
- Install 5' x 2' Detectable Warning field

Latitude 44.431034°

Longitude -67.27208°

## Hing Garden 146+80 Rt. (CR14604)

### Reconstruct Pedestrian Ramp

- Construct per SD 801 (14)
- Remove and Reset 17' granite curb
- Regrade and pave 22' x 5' sidewalk
- Install 5' x 2' Detectable Warning field

Latitude 44.425892°

Longitude -67.272037°

