

WIN 26594.40
Fairfield and Oakland Ramp Report

All measurements listed within the document are approximate and are for estimating purposes only. Actual measurements will be determined in the field and will be approved by the Resident.



Fairfield Route 139 ADA #1

CR09364

- Cut the existing sidewalk, curb, and 2' into Route 139, 8' back from Newhall Street, and remove the existing HMA.
- Remove 8' of curb.
- Place an 8' bituminous tip down.
- Grade and pave 8'x5' of sidewalk, and the removed shoulder pavement area.
- Place a 2'x5' detectable warning field.
- Grade, loam, and seed 8'x2' of disturbed lawn.

Latitude: 44.590906°

Longitude: -69.596326°

Reference: Standard Detail 801(22)

WIN 26594.40
Fairfield and Oakland Ramp Report

Fairfield Route 139 ADA #2

CR09365

- Cut the existing sidewalk, curb, and 2' into Route 139, 12' back from Newhall Street, and remove the existing HMA.
- Cut the existing sidewalk, curb, and 2' into Newhall Street, 8' back from Route 139, and remove the existing HMA.
- Remove 12' of curb on Route 139, and 8' of curb on Newhall Street.
- Place an 8' bituminous tip down on Newhall Street and an 8' bituminous tip down + 4' of curb on Route 139.
- Grade and pave 25'x5' of sidewalk, and the removed shoulder pavement area.
- Place a 2'x4' detectable warning field.
- Grade, loam, and seed 25'x2' of disturbed lawn.

Latitude: 44.590931°

Longitude: -69.596527°

Reference: Standard Detail 801(20)

WIN 26594.40
Fairfield and Oakland Ramp Report



Fairfield Route 139 ADA #3

CR09367

- Cut the existing sidewalk, curb, and 2' into Maple Street, 8' back from Route 139, and remove the existing HMA.
- Cut the existing curb and 2' into Route 139, 8' back from Maple Street and remove the existing HMA.
- Remove 8' of curb on Route 139, and 8' of curb on Maple Street.
- Place a 4' bituminous tip down on Route 139 and an 8' bituminous tip down + 4' of curb on Maple Street.
- Grade and pave 12'x5' of sidewalk, and the removed shoulder pavement area.
- Construct 8'x5' of new sidewalk to extend behind the pedestrian signal.
- Place a 2'x6' detectable warning field.
- Grade, loam, and seed 22'x2' of disturbed lawn, and any disturbed esplanade.

Latitude: 44.591380°

Longitude: -69.598414°

Reference: Standard Detail 801(12)

WIN 26594.40
Fairfield and Oakland Ramp Report

Fairfield Route 139 ADA #4

CR09368

- Cut the existing curb and 2' into High Street, 8' back from Route 139, and remove the existing HMA.
- Cut the existing sidewalk, curb, and 2' into Route 139, 10' back from High Street and remove the existing HMA. The cut into Route 139 should encompass the catch basin frame.
- Remove 10' of curb on Route 139, and 8' of curb on High Street.
- Place an 8' bituminous tip down on High Street and an 8' bituminous tip down + 2' of curb on Maple Street.
- Grade and pave 15'x5' of sidewalk, and the removed shoulder pavement area.
- Place a 2'x6' detectable warning field.
- Grade, loam, and seed 23'x2' of disturbed lawn.

Latitude: 44.591237°

Longitude: -69.598395°

Reference: Standard Detail 801(22)

Fairfield Route 139 ADA #5

CR09369

- Cut the existing sidewalk, curb, and 2' into Route 139, 8' back from High Street, and remove the existing HMA. The sidewalk cut should encompass the pedestrian signal.
- Cut the existing sidewalk, curb, and 2' into High Street, 8' back from Route 139, and remove the existing HMA.
- Remove 8' of curb on Route 139, and 8' of curb on High Street.
- Place a 15' bituminous tip down on High Street and a 10' bituminous tip down on Route 139.
- Grade and pave 30'x5' of sidewalk, and the removed shoulder pavement area.
- Place a 2'x4' detectable warning field.
- Grade, loam, and seed 30'x2' of disturbed lawn.

Latitude: 44.591278°

Longitude: -69.598591°

Reference: Standard Detail 801(20)

WIN 26594.40
Fairfield and Oakland Ramp Report



Fairfield Route 139 ADA #6

CR09370

- Cut the existing sidewalk, curb, and 2' into Route 139, 12' back from Winchester Street and remove the existing HMA. The cut into Route 139 should encompass the catch basin frame.
- Remove 12' of curb on Route 139.
- Place an 8' bituminous tip down + 4' of curb on Route 139.
- Grade and pave 12'x5' of sidewalk, and the removed shoulder pavement area.
- Place a 2'x5' detectable warning field.
- Grade, loam, and seed 12'x2' of disturbed lawn.

Latitude: 44.591663°

Longitude: -69.600972°

Reference: Standard Detail 801(22)

WIN 26594.40
Fairfield and Oakland Ramp Report

Fairfield Route 139 ADA #7

CR09371

- Cut the existing sidewalk, curb, and 2' into Route 139, 14' back from Winchester Street and remove the existing HMA.
- Remove 14' of curb on Route 139.
- Place a 12' bituminous tip down + 1' of curb on Route 139.
- Grade and pave 14'x5' of sidewalk, and the removed shoulder pavement area.
- Place a 2'x6' detectable warning field.
- Grade, loam, and seed 14'x2' of disturbed lawn.

Latitude: 44.591693°

Longitude: -69.601182°

Reference: Standard Detail 801(22)

Fairfield Route 139 ADA #8

CR09372

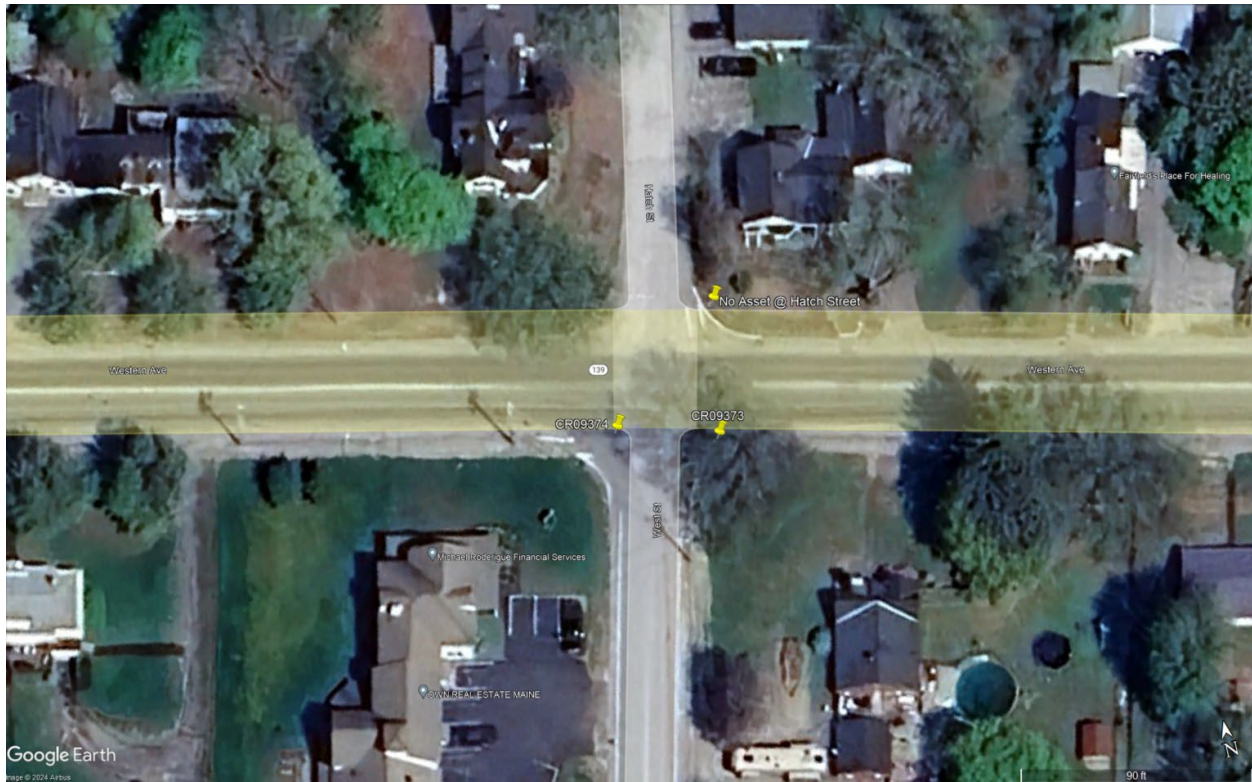
- Cut the existing lawn, curb, and 2' into Route 139/North Street and remove the existing HMA, on the Northeast corner of North Street and Route 139.
- Remove 30' of bituminous curb.
- Place 18' of curb back + 2, 4' tipdowns and a 4' opening for a landing space.
- Construct and pave a 4'x4' level landing area within the lawn area.
- Grade and pave the removed shoulder pavement area.
- Place a 2'x4' detectable warning field.
- Grade, loam, and seed the disturbed lawn as needed to match into existing.
- Relocate the signpost out of the proposed safe landing area.

Latitude: 44.591816°

Longitude: -69.601059°

Reference: Standard Detail 801(12)

WIN 26594.40
Fairfield and Oakland Ramp Report



Fairfield Route 139 ADA #9

CR09373

- Cut the existing sidewalk, curb, and 2' into Route 139, 8' back from West Street, and remove the existing HMA. The shoulder cut should encompass the catch basin frame.
- Cut the existing sidewalk, curb, and 2' into West Street, 8' back from Route 139, and remove the existing HMA.
- Remove 8' of curb on Route 139, and 8' of curb on West Street.
- Place an 8' bituminous tip down + 7' of curb on West Street and an 8' bituminous tip down + 2' of curb on Route 139.
- Grade and pave 30'x5' of sidewalk, and the removed shoulder pavement area.
- Place a 2'x4' detectable warning field.
- Grade, loam, and seed 30'x2' of disturbed lawn.

Latitude: 44.591904°

Longitude: -69.602398°

Reference: Standard Detail 801(20)

WIN 26594.40
Fairfield and Oakland Ramp Report

Fairfield Route 139 ADA #10

CR09374

- Cut the existing sidewalk, curb, and 2' into Route 139, 8' back from West Street and remove the existing HMA.
- Remove 8' of curb on Route 139.
- Place a 12' bituminous tip down on Route 139.
- Grade and pave 12'x5' of sidewalk, and the removed shoulder pavement area.
- Place a 2'x4' detectable warning field.
- Grade, loam, and seed 20'x2' of disturbed lawn.

Latitude: 44.591922°

Longitude: -69.602600°

Reference: Standard Detail 801(22)

Fairfield Route 139 ADA #11

New Asset – Hatch Street

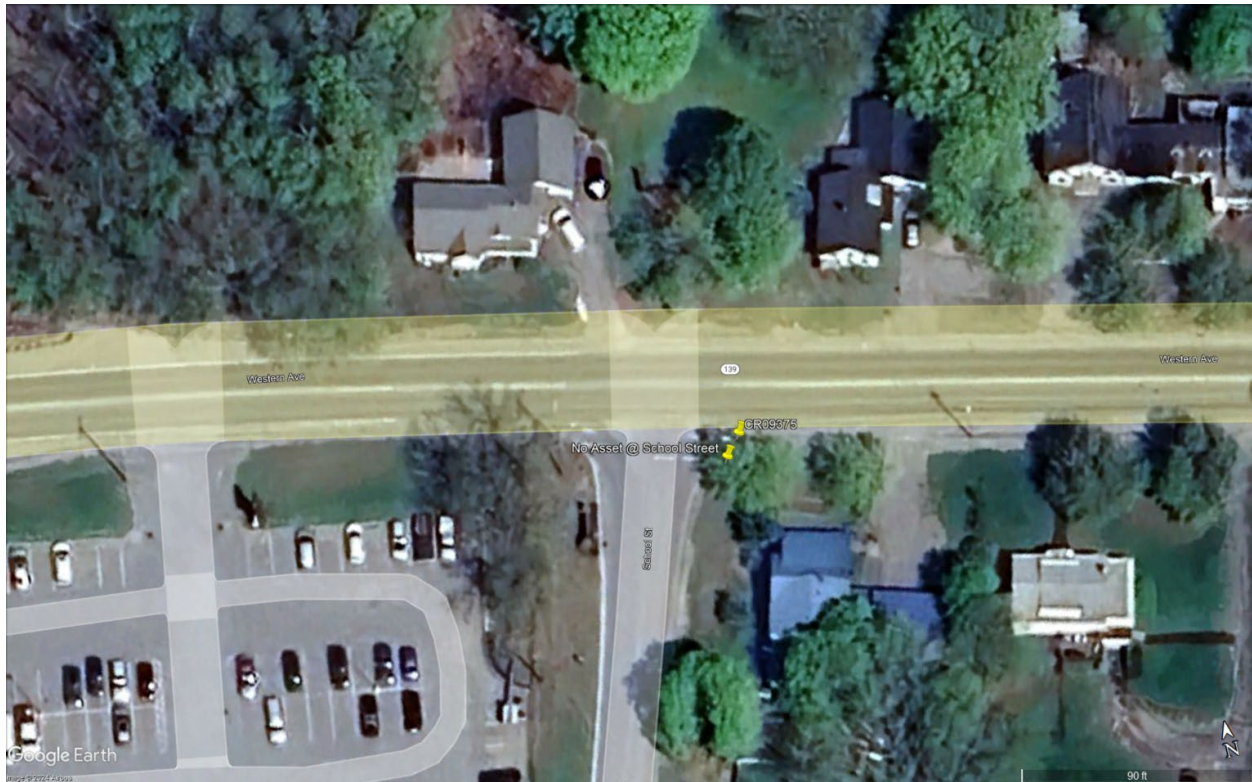
- Cut the existing lawn, curb, and 2' into Route 139/Hatch Street and remove the existing HMA, on the Northeast corner of Hatch Street and Route 139.
- Remove 12' of bituminous curb.
- Place 2, 4' bituminous tip downs at either end of the cut curb.
- Construct and pave a 4'x4' level landing area within the lawn area.
- Grade and pave the removed shoulder pavement area.
- Place a 2'x4' detectable warning field.
- Grade, loam, and seed the disturbed lawn as needed to match into existing.

Latitude: 44.592026°

Longitude: -69.602359°

Reference: Standard Detail 801(12)

WIN 26594.40
Fairfield and Oakland Ramp Report



Fairfield Route 139 ADA #12 & #13

CR09375 and New Asset – School Street

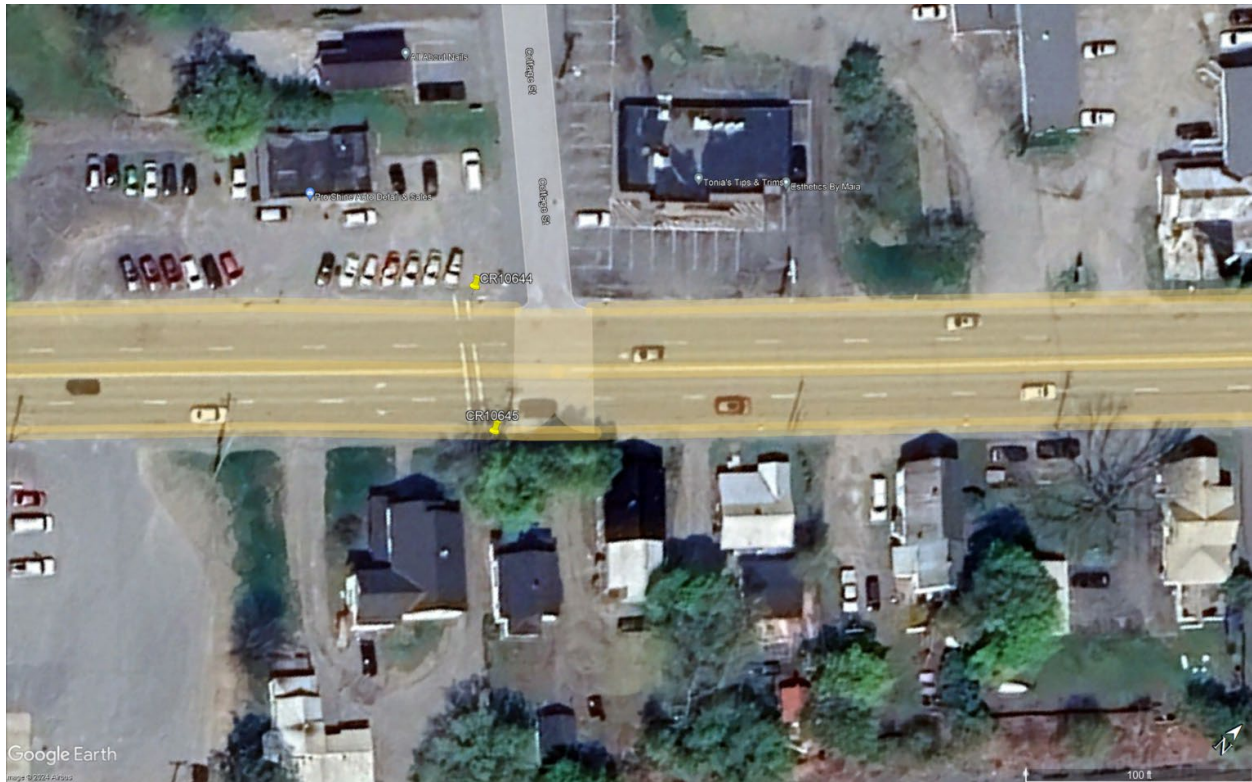
- Cut the existing sidewalk, curb, and 2' into Route 139, 8' back from School Street, and remove the existing HMA.
- Cut the existing sidewalk, curb, and 2' into School Street, 8' back from Route 139, and remove the existing HMA.
- Remove 8' of curb on Route 139, and 8' of curb on School Street.
- Place an 8' concrete slipform tip down on West Street and an 8' bituminous tip down on Route 139.
- Grade and pave 27'x5' of sidewalk, and the removed shoulder pavement area.
- Place a 2'x5' detectable warning field for each ramp.
- Grade, loam, and seed 27'x2' of disturbed lawn.

Latitude: 44.592129°

Longitude: -69.603918°

Reference: Standard Detail 801(12)

WIN 26594.40
Fairfield and Oakland Ramp Report



Fairfield Route 201 ADA #1

CR10644

- Cut the existing sidewalk, curb, and 2' into Route 201, from the top of tip down to top of tip down and remove the existing HMA.
- On the Southwest side, remove and reset the 4' granite tip down as vertical curb with normal reveal. Add 15' of granite curb + 8' tip down.
- On the Northeast side, remove the 4' tip down and headstone, and replace with an 8' tip down.
- Grade and pave 40'x5' of sidewalk, and the removed shoulder pavement area.
- Place a 2'x4' detectable warning field.

Latitude: 44.579504°

Longitude: -69.607548°

Reference: Standard Detail 801(12)

WIN 26594.40
Fairfield and Oakland Ramp Report

Fairfield Route 201 ADA #2

CR10645

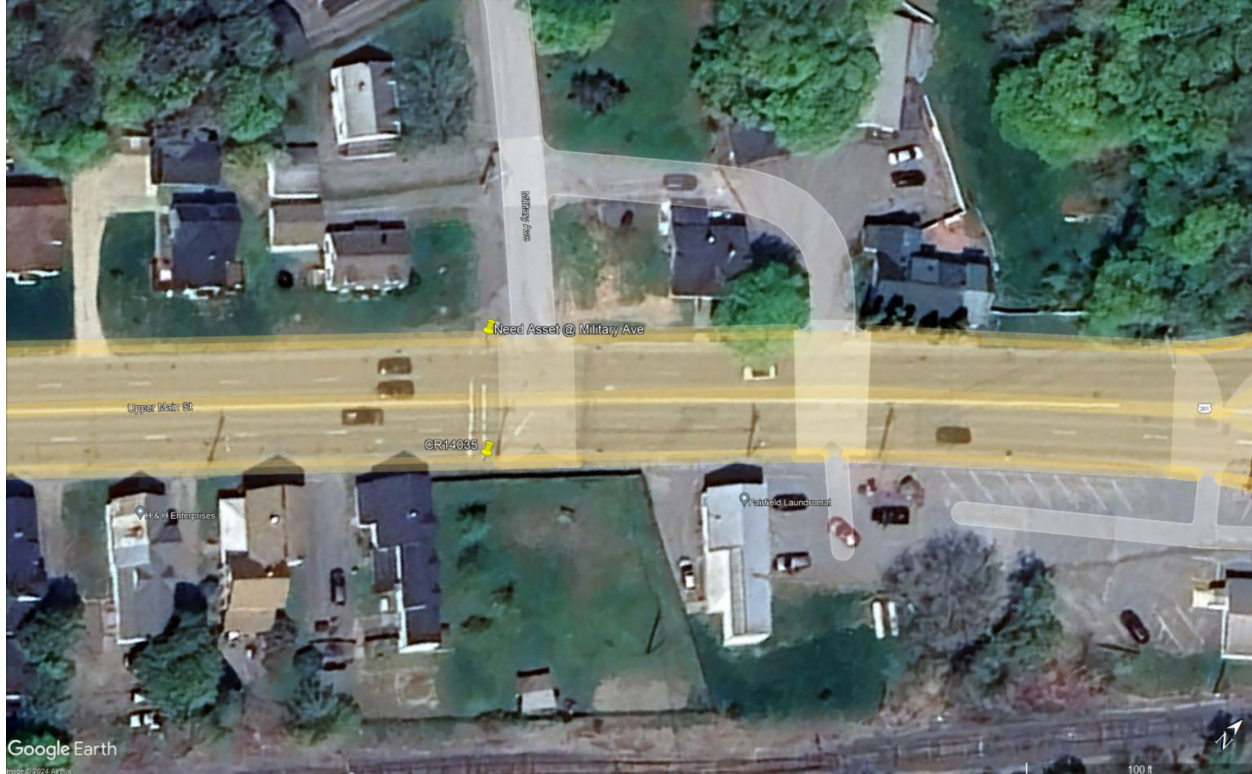
- Cut the existing sidewalk, curb, and 2' into Route 201, 10' back from the driveway and remove the existing HMA.
- Remove 10' of curb.
- Place an 8' granite tip down.
- Grade and pave 13'x5' of sidewalk, and the removed shoulder pavement area.
- Place a 2'x4' detectable warning field.
- Grade, loam, and seed 13'x2' of disturbed lawn.

Latitude: 44.579391°

Longitude: -69.607365°

Reference: Standard Detail 801(27)

WIN 26594.40
Fairfield and Oakland Ramp Report



Fairfield Route 201 ADA #3

CR14035

- Cut the existing sidewalk at the top of each tip down and remove the existing HMA.
- Grade and pave 19'x5' of sidewalk.
- Place a 2'x4' detectable warning field.
- Grade, loam, and seed 19'x2' of disturbed lawn.

Latitude: 44.580625°

Longitude: -69.605675°

Reference: Standard Detail 801(20)

Fairfield Route 201 ADA #4

New Asset – Military Ave

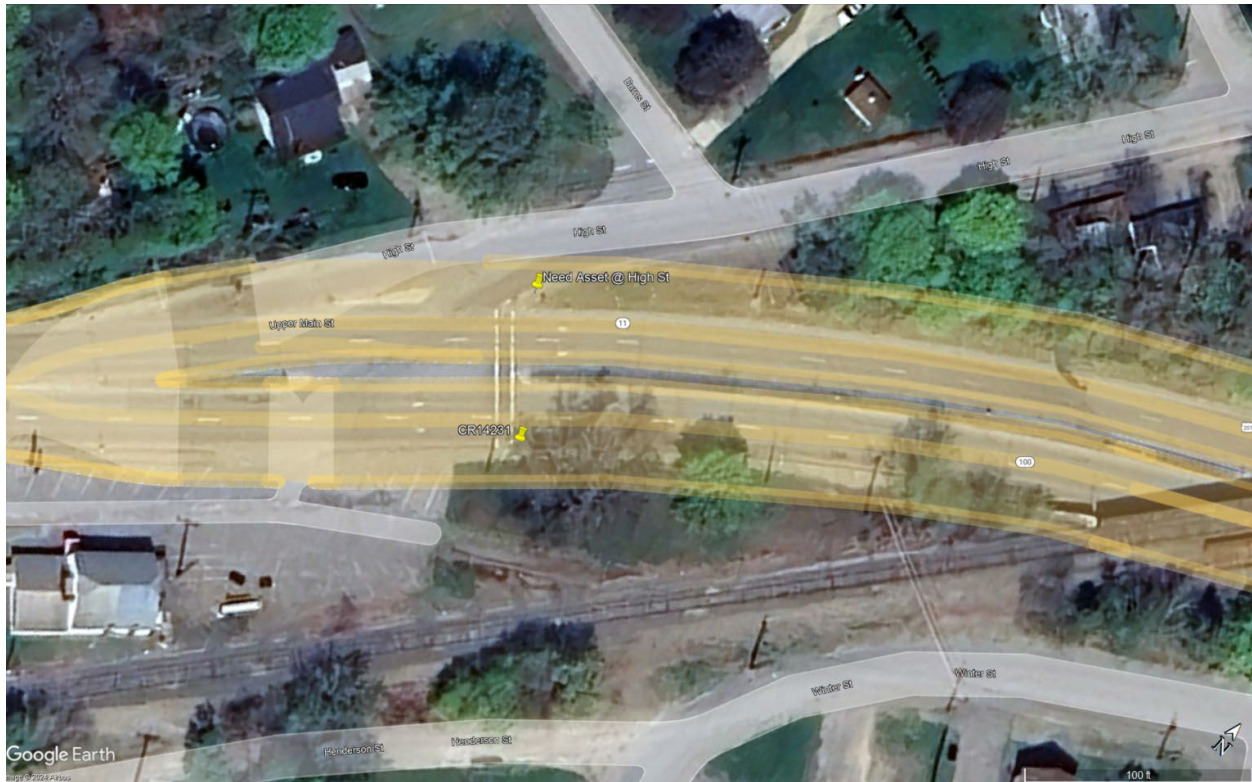
- Cut the existing sidewalk and 2' into Military Avenue, 15' back from Route 201 and remove the existing HMA. The shoulder cut should encompass the catch basin frame.
- Place a 15' bituminous tip down on Military Avenue.
- Grade and pave 15'x5' of sidewalk, and the removed shoulder pavement area.
- Place a 2'x4' detectable warning field.
- Grade, loam, and seed 15'x2' of disturbed lawn.

Latitude: 44.580746°

Longitude: -69.605819°

Reference: Standard Detail 801(22)

WIN 26594.40
Fairfield and Oakland Ramp Report



Fairfield Route 201 ADA #5

CR14231

- On the Southwest side, cut the existing sidewalk, curb, and 2' into Route 201 from the bottom of the tip down to 14' back. Remove the existing HMA.
- On the Northeast side, cut the existing sidewalk at the top of the tip down and remove the existing HMA.
- Take the 2 pieces (14') of granite curb on the Southwest side and reset to create a 14' tip down.
- Grade and pave 26'x5' of sidewalk, and the removed shoulder pavement area.
- Place a 2'x4' detectable warning field.
- Grade, loam, and seed 26'x2' of disturbed lawn.

Latitude: 44.581650°

Longitude: -69.604129°

Reference: Standard Detail 801(20)

WIN 26594.40
Fairfield and Oakland Ramp Report

Fairfield Route 201 ADA #6

New Asset – High Street

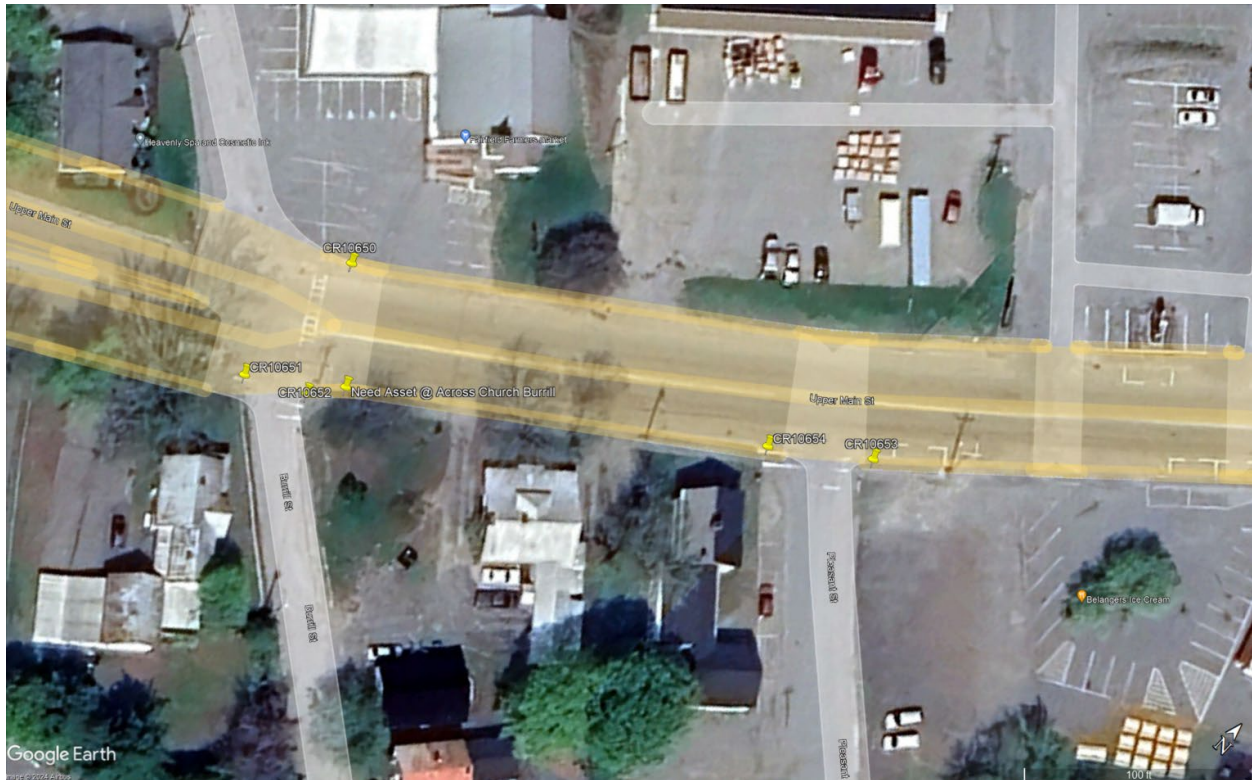
- Cut the existing sidewalk, curb, and 2' into Route 201, 2 pieces of curb back from High Street and remove the existing HMA.
- Cut the existing sidewalk, curb, and 2' into High Street, 2 pieces of curb back from Route 201 and remove the existing HMA.
- On High Street remove 2 pieces of granite curb and reset as a tip down.
- On Route 201 remove the granite tip down and remove and reset the next piece of existing granite curb as a tip down.
- Grade and pave 15'x5' of sidewalk, and the removed shoulder pavement area.
- Place a 2'x4' detectable warning field.
- Grade, loam, and seed 15'x2' of disturbed lawn.
- Remove and reset the nose of the roadway island as needed for the alignment of the crosswalk. Repave the roadway.

Latitude: 44.581794°

Longitude: -69.604289°

Reference: Standard Detail 801(22)

WIN 26594.40
Fairfield and Oakland Ramp Report



Fairfield Route 201 ADA #7

CR10650

- Cut the existing sidewalk, curb, and 2' into Route 201, from the existing Northeast tip down, going 38' Southwesterly.
- Remove all existing granite curb (approximately 23').
- On Route 201, from the existing Northeast tip down location heading Southwesterly, place an 8' granite tip down, 17' granite curb, 8' of granite radius curb, and a 5' granite tip down. Use the existing curb where possible.
- Grade and pave 27'x5' of sidewalk, and the removed shoulder pavement area.
- Construct 11'x5' of new sidewalk, behind the nearby catch basin. Adjust the catch basin as necessary.
- Reset the backer curb.
- Place a 2'x4' detectable warning field on the Northeast tip down.

Latitude: 44.583181°

Longitude: -69.600328°

Reference: Standard Detail 801(12)

WIN 26594.40
Fairfield and Oakland Ramp Report

Fairfield Route 201 ADA #8

New Asset – Across from the church at Burrill Street

- Cut the existing sidewalk 20' heading Northeasterly from the catch basin and remove the existing HMA.
- Cut 2' into Route 201 from the catch basin heading Northeasterly 13'. Remove the existing HMA.
- Remove 2 pieces (13') of granite curb Northeast of the catch basin. Cut the 8' piece and reset as two 4' tip downs at either end of the removed curb.
- Grade and pave 20'x5' of sidewalk, and the removed shoulder pavement area.
- Construct 5'x4' of sidewalk through the existing esplanade.
- Place a 2'x5' detectable warning field.
- Grade, loam, and seed 20'x2' of disturbed lawn and 23'x4' of esplanade.

Latitude: 44.583080°

Longitude: -69.600171°

Reference: Standard Detail 801(23)

Fairfield Route 201 ADA #9

CR10651

- Cut the existing sidewalk, curb, and 2' into Route 201, 12' back from Burrill Street and remove the existing HMA.
- Remove 12' of curb on Route 201. Take the existing 4' granite curb piece and use as vertical curb followed by the existing 8' granite curb piece placed as a tip down.
- Grade and pave 12'x5' of sidewalk, and the removed shoulder pavement area.
- Place a 2'x4' detectable warning field.
- Grade, loam, and seed 12'x2' of disturbed lawn.

Latitude: 44.583003°

Longitude: -69.600316°

Reference: Standard Detail 801(22)

Fairfield Route 201 ADA #10

CR10652

- Cut the existing sidewalk, curb, and 2' into Burrill Street, from between the catch basin and the hydrant until the esplanade. Remove the existing HMA.
- Cut the existing sidewalk on Route 201, 10' back from Burril Street and remove the existing HMA.
- On Burrill Street remove 5' of bituminous curb. Place an 8' bituminous tip down + 2' of curb.
- Take the 2 pieces (14') of granite curb on the Southwest side and reset to create a 14' tip down.
- Grade and pave 20'x5' of sidewalk, and the removed shoulder pavement area.
- Place a 2'x4' detectable warning field.
- Grade, loam, and seed 20'x2' of disturbed lawn and any disturbed esplanade.

Latitude: 44.583041°

Longitude: -69.600206°

Reference: Standard Detail 801(20)

WIN 26594.40
Fairfield and Oakland Ramp Report

Fairfield Route 201 ADA #11

CR10653

- Cut the existing sidewalk, curb, 2' into Route 201, and 2' behind sidewalk 12' back from Pleasant Street and remove the existing HMA.
- Remove 12' of curb on both sides of the sidewalk. Take the existing 8' granite curb pieces and reset as 8' tip downs.
- Grade and pave 12'x5' of sidewalk, and the removed shoulder pavement area.
- Place a 2'x4' detectable warning field.

Latitude: 44.583444°

Longitude: -69.599438°

Reference: Standard Detail 801(22)

Fairfield Route 201 ADA #12

CR10654

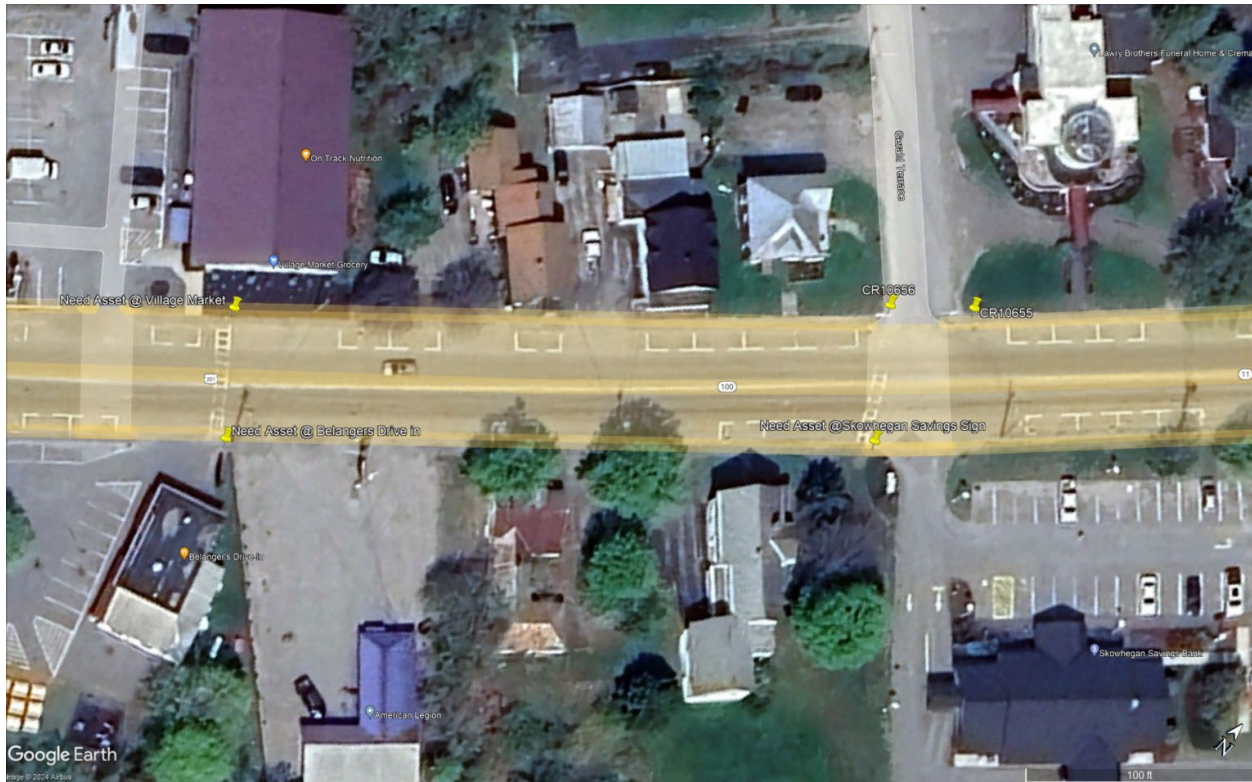
- Cut the existing sidewalk 8' back from Pleasant Street and remove the existing HMA.
- Grade and pave 8'x5' of sidewalk.
- Place a 2'x4' detectable warning field.
- Grade, loam, and seed 8'x2' of disturbed lawn and 8'x2' of disturbed esplanade.

Latitude: 44.583370°

Longitude: -69.599579°

Reference: Standard Detail 801(22)

WIN 26594.40
Fairfield and Oakland Ramp Report



Fairfield Route 201 ADA #13

New Asset – Belangere Drive-In

- Cut the existing sidewalk and 2' into Route 201 and remove the existing HMA.
- Grade and pave 13'x5' of sidewalk and 2'x8' next to the esplanade.
- Grade and pave the removed shoulder pavement area.
- Place a 2'x4' detectable warning field.
- Grade, loam, and seed 5'x2' of disturbed lawn and 5'x2' of disturbed esplanade.

Latitude: 44.583836°

Longitude: -69.598799°

Reference: Standard Detail 801 (27)

WIN 26594.40
Fairfield and Oakland Ramp Report

Fairfield Route 201 ADA #14

New Asset – Village Market

- Cut the existing sidewalk, curb, and 2' into Route 201, from the top of the Southwest tip down, extending Northeasterly 50'. Remove the existing HMA.
- Remove 13' of granite curb at the Southwest tip down and 4' of granite curb at the Northeast tip down.
- From the cut at the Northeast curb location, heading Southwesterly, place 38' of granite curb + 8' granite curb tip down. Granite curb that was removed from this location can be reused.
- From the cut on the Southwest curb location, place an 8' granite curb tip down.
- On Burrill Street remove 5' of bituminous curb. Place an 8' bituminous tip down + 2' of curb.
- Take the 2 pieces (14') of granite curb on the Southwest side and reset to create a 14' tip down.
- Grade and pave 17'x5' of sidewalk, and the removed shoulder pavement area.
- Construct 33'x5' of sidewalk.
- Place a 2'x4' detectable warning field.
- Regrade the bark mulch area as needed.

Latitude: 44.583946°

Longitude: -69.598931°

Reference: Standard Detail 801(20)

Fairfield Route 201 ADA #15

CR10655

- Cut the existing sidewalk, curb, and 2' into Route 201, 8' back from Gerald Terrace and remove the existing HMA.
- Remove the existing 4' tip down and headstone.
- Place an 8' granite curb tip down.
- Grade and pave 8'x5' of sidewalk, and the removed shoulder pavement area.
- Place a 2'x4' detectable warning field.

Latitude: 44.584540°

Longitude: -69.598016°

Reference: Standard Detail 801(22)

Fairfield Route 201 ADA #16

CR10656

- Cut the existing sidewalk, curb, and 2' into Route 201, 12' back from Gerald Terrace and remove the existing HMA.
- Remove the existing 4' tip down, headstone, and next piece of granite curb.
- Place an 8' granite curb tip down.
- Grade and pave 12'x5' of sidewalk, and the removed shoulder pavement area.
- Place a 2'x4' detectable warning field.

Latitude: 44.584476°

Longitude: -69.598116°

Reference: Standard Detail 801(22)

WIN 26594.40
Fairfield and Oakland Ramp Report

Fairfield Route 201 ADA #17

New Asset – Skowhegan Savings Bank

- Cut the existing sidewalk 15' back from Gerald Terrace and remove the existing HMA.
- Grade and pave 15'x5' of sidewalk.
- Place a 2'x4' detectable warning field.
- Grade, loam, and seed 15'x2' of disturbed lawn and any disturbed esplanade.

Latitude: 44.584350°

Longitude: -69.598003°

Reference: Standard Detail 801(22)

WIN 26594.40
Fairfield and Oakland Ramp Report

Fairfield Route 201 ADA #21

New Asset - Walgreens

- Cut the existing sidewalk, curb, and 2' into Route 201, 16' back from the Walgreens entrance and remove the existing HMA.
- Remove 12' of granite curb.
- Place an 8' tip down, using removed curb if possible.
- Grade and pave 16'x5' of sidewalk, and the removed shoulder pavement areas.
- Place a 2'x4' detectable warning field.
- Grade, loam, and seed 16'x4' of disturbed lawn.

Latitude: 44.585391°

Longitude: -69.596818°

Reference: Standard Detail 801(27)

Fairfield Route 201 ADA #22

CR10662

- Cut the existing sidewalk, curb, and 2' into Route 201, 9' back from Summit Street and remove the existing HMA.
- Remove and reset the first two granite curb pieces into a tip down.
- Grade and pave 9'x9' of sidewalk, and the removed shoulder pavement areas.
- Place a 2'x8' detectable warning field.

Latitude: 44.586276°

Longitude: -69.595716°

Reference: Standard Detail 801(22)

Fairfield Route 201 ADA #23

CR10661

- Cut the existing sidewalk, curb, 2' into Route 201, and 2' into the parking lot for the whole length of curb on the Route 201/ Water Street side.
- Remove the existing granite headstone and one piece of granite curb west of it, to create an opening in the curb.
- On both sides of the removed curb, remove the rest of the existing curb, and replace with a 4' tip up and 4' tip down. Allow 4' of space between the existing light pole and the proposed curb and use a 4" reveal if needed to obtain the correct running slopes.
- On the back side (near the parking lot) of the sidewalk, remove all existing curb and place 2, 4' tipups + 4' tipdowns to correspond with the front of the sidewalk.
- Grade and pave 25'x5' of sidewalk, and the removed pavement shoulder areas.
- Place a 2'x4' detectable warning field.

Latitude: 44.586199°

Longitude: -69.595476°

Reference: Standard Detail 801(12)

WIN 26594.40
Fairfield and Oakland Ramp Report

Fairfield Route 201 ADA #24

CR10660

- Cut the existing sidewalk, curb, and 2' into Route 201, 5' back from Summit Street and remove the existing HMA.
- Remove the first two pieces of granite curb, and one piece of the existing granite backing curb.
- Place a 5' granite tip down.
- Grade and pave 15'x5' of sidewalk and the removed pavement shoulder area.
- Place a 2'x6' detectable warning field.

Latitude: 44.586377°

Longitude: -69.595598°

Reference: Standard Detail 801(12)

Fairfield Route 201 ADA #25

CR10659

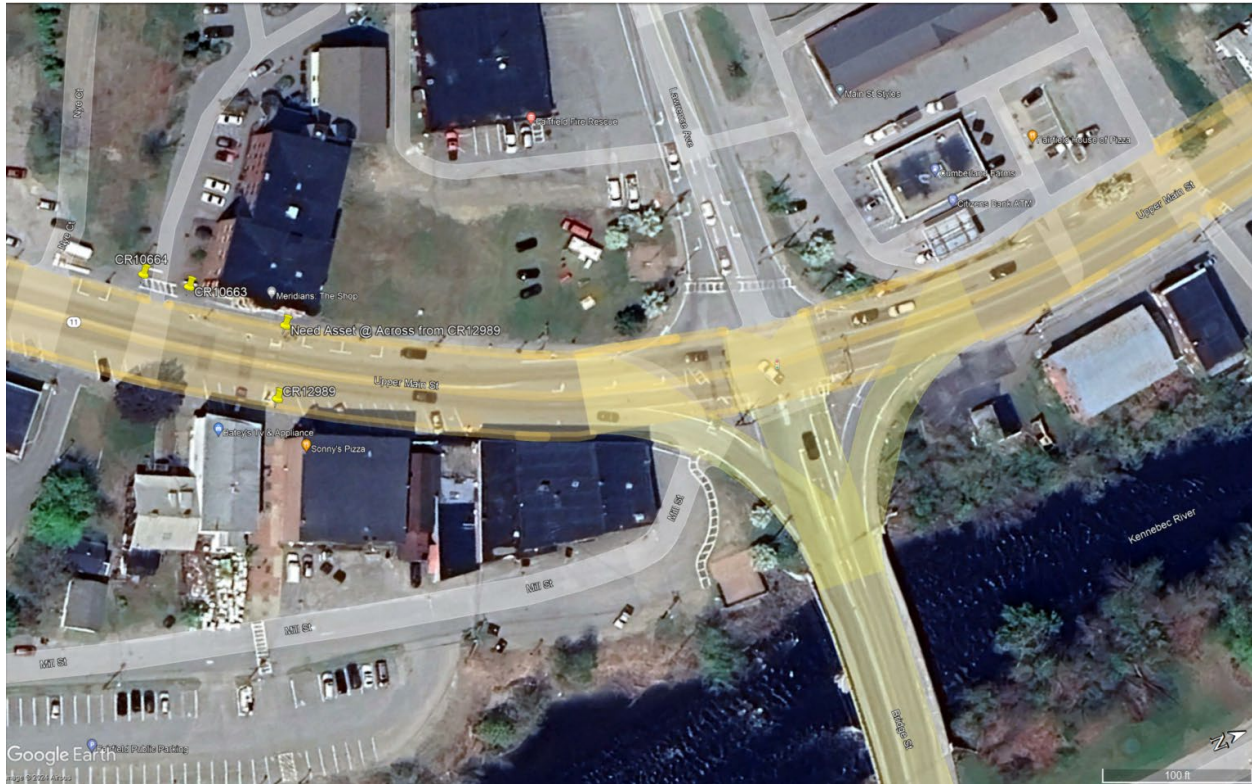
- Cut the existing sidewalk, curb, and 2' into Route 201, 12' back from Water Street, and remove the existing HMA.
- Cut the existing sidewalk, curb, and 2' into Water Street, 15' back from Route 201, and remove the existing HMA.
- Remove 8' of granite curb on Route 201, and 10' of concrete curb on Water Street.
- Place an 8' bituminous tip down on Water Street and an 8' granite tip down on Route 139.
- Grade and pave 10'x5' of sidewalk on Water Street, 12'x7' of sidewalk on Route 201, and the removed shoulder pavement area.
- Place a 2'x8' detectable warning field.
- Grade, loam, and seed 18'x2' of disturbed lawn.

Latitude: 44.586291°

Longitude: -69.595389°

Reference: Standard Detail 801(20)

WIN 26594.40
Fairfield and Oakland Ramp Report



Fairfield Route 201 ADA #26

CR10664

- Cut the existing sidewalk, 8' back from the entrance and remove the existing HMA.
- Grade and pave 8'x8' of sidewalk.
- Place a 2'x6' detectable warning field.

Latitude: 44.586674°

Longitude: -69.595319°

Reference: Standard Detail 801(22)

Fairfield Route 201 ADA #27

CR10663

- Cut the existing sidewalk, 8' back from the entrance and remove the existing HMA.
- Grade and pave 8'x8' of sidewalk.
- Place a 2'x6' detectable warning field.

Latitude: 44.586754°

Longitude: -69.595230°

Reference: Standard Detail 801(22)

WIN 26594.40
Fairfield and Oakland Ramp Report

Fairfield Route 201 ADA #28

CR12989

- Cut the existing sidewalk and remove the existing HMA.
- Grade and pave 15'x10' of sidewalk.
- Place a 2'x6' detectable warning field.

Latitude: 44.586807°

Longitude: -69.594876°

Reference: Standard Detail 801(21)

Fairfield Route 201 ADA #29

New Asset – Across from CR12989

- Cut the existing sidewalk and remove the existing HMA.
- Grade and pave 15'x10' of sidewalk.
- Place a 2'x6' detectable warning field.

Latitude: 44.586882°

Longitude: -69.595059°

Reference: Standard Detail 801(12)

WIN 26594.40
Fairfield and Oakland Ramp Report



Fairfield Route 201 ADA #30

CR10673

- Cut the existing sidewalk, curb, and 2' into Route 201, 8' back from Gordon Plaza and remove the existing HMA.
- Remove 8' of granite curb.
- Place an 8' granite tip down.
- Grade and pave 8'x5' of sidewalk and the removed pavement shoulder area.
- Place a 2'x4' detectable warning field.
- Grade, loam, and seed 8'x2' of disturbed lawn.

Latitude: 44.589324°

Longitude: -69.594857°

Reference: Standard Detail 801(22)

WIN 26594.40
Fairfield and Oakland Ramp Report

Fairfield Route 201 ADA #31

CR10674

- Cut the existing sidewalk, curb, and 2' into Route 201, 8' back from Gordon Plaza and remove the existing HMA.
- Remove 8' of granite curb and reset as a tip down.
- Grade and pave 8'x5' of sidewalk and the removed pavement shoulder area.
- Place a 2'x4' detectable warning field.
- Grade, loam, and seed 8'x2' of disturbed lawn.

Latitude: 44.589421°

Longitude: -69.594879°

Reference: Standard Detail 801(22)

Fairfield Route 201 ADA #32

New Asset – Across from Gordon Plaza

- Cut the existing sidewalk, curb, and 2' into Route 201, 12' back from the nearby entrance and remove the existing HMA.
- Remove 12' of granite curb.
- Place an 8' granite tip down, reusing the existing curb if possible.
- Grade and pave 12'x5' of sidewalk.
- Place a 2'x4' detectable warning field.
- Grade, loam, and seed 8'x2' of disturbed esplanade.

Latitude: 44.589485°

Longitude: -69.594712°

Reference: Standard Detail 801(27)

WIN 26594.40
Fairfield and Oakland Ramp Report



Fairfield Route 201 ADA #33

CR10676

- Cut the existing sidewalk, curb, and 2' into Route 139, 10' back from Route 201, and remove the existing HMA.
- Remove and reset 2 pieces of granite curb on Route 139 into a tip down.
- Grade and pave 24'x5' of sidewalk on Water Street and the removed shoulder pavement area.
- Place a 2'x8' detectable warning field.
- Grade, loam, and seed 18'x2' of disturbed lawn.

Latitude: 44.590738°

Longitude: -69.595350°

Reference: Standard Detail 801(20)

WIN 26594.40
Fairfield and Oakland Ramp Report

Fairfield Route 201 ADA #34

CR10675

- On the North sidewalk portion of the ramp, cut the existing sidewalk 10' back from the tip down, and remove the existing HMA.
- On the West side of the ramp, cut the curb, sidewalk, and 2' into Route 139, from the ramp 13' into Route 139. Remove the existing HMA.
- Remove and reset 3 pieces of granite curb on the Western side of the ramp into a 13' tip down.
- Grade and pave 10'x5' of sidewalk on the North side, 10'x13' on the Western side, and the removed shoulder pavement area.
- Place a 2'x4' detectable warning field.
- Grade, loam, and seed any disturbed esplanade.

Latitude: 44.590931°

Longitude: -69.595387°

Reference: Standard Detail 801(12)

WIN 26594.40
Fairfield and Oakland Ramp Report



Fairfield Route 100 ADA #1

CR14170

- Cut the existing sidewalk, curb and 2' into Route 139, 12' back from the tip down, and remove the existing HMA.
- Remove 8' of granite curb.
- Install 4' of curb + an 8' granite tip down. Reuse the removed existing curb where possible.
- Grade and pave 12'x5' of sidewalk and the removed shoulder pavement area.
- Place a 2'x6' detectable warning field.
- Grade, loam, and seed 12'x1' of disturbed lawn.

Latitude: 44.587740°

Longitude: -69.593210°

Reference: Standard Detail 801(22)

WIN 26594.40
Fairfield and Oakland Ramp Report

Fairfield Route 100 ADA #2

New Asset – Island Ave East

- Cut the existing sidewalk, curb, and 2' into Route 139 and remove the existing HMA.
- On both the North and the East side of the ramp, remove and reset the existing tip down as vertical curb with normal reveal.
- On both the North and the East side of the ramp place new 8' granite tip downs.
- Grade and pave 35'x5' of sidewalk on Water Street and the removed shoulder pavement area.
- Place a 2'x6' detectable warning field.
- Grade, loam, and seed 35'x1' of disturbed lawn.

Latitude: 44.587717°

Longitude: -69.593005°

Reference: Standard Detail 801(20)

Fairfield Route 100 ADA #3

CR07841

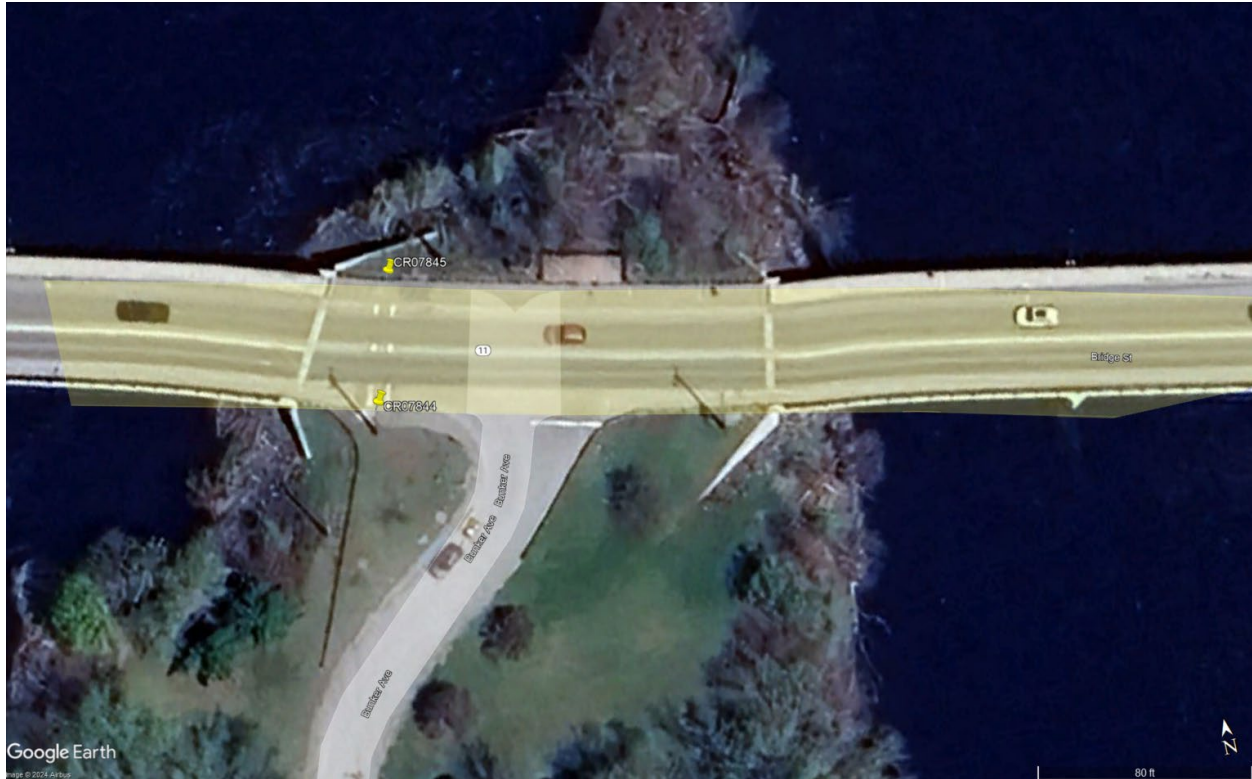
- Construct a 5'x5' sidewalk landing area between the guardrail.
- Place a 2'x4' detectable warning field.
- Grade, loam, and seed 12'x2' of disturbed lawn.

Latitude: 44.587568°

Longitude: -69.593026°

Reference: Standard Detail 801(12)

WIN 26594.40
Fairfield and Oakland Ramp Report



Fairfield Route 100 ADA #4

CR07844

- Cut the existing sidewalk and remove the existing HMA.
- Grade and pave 15'x5' of sidewalk on Water Street.
- Place a 2'x8' detectable warning field.
- Grade, loam, and seed 15'x2' of disturbed lawn.

Latitude: 44.587209°

Longitude: -69.591096°

Reference: Standard Detail 801(12)

Fairfield Route 100 ADA #5

CR07845

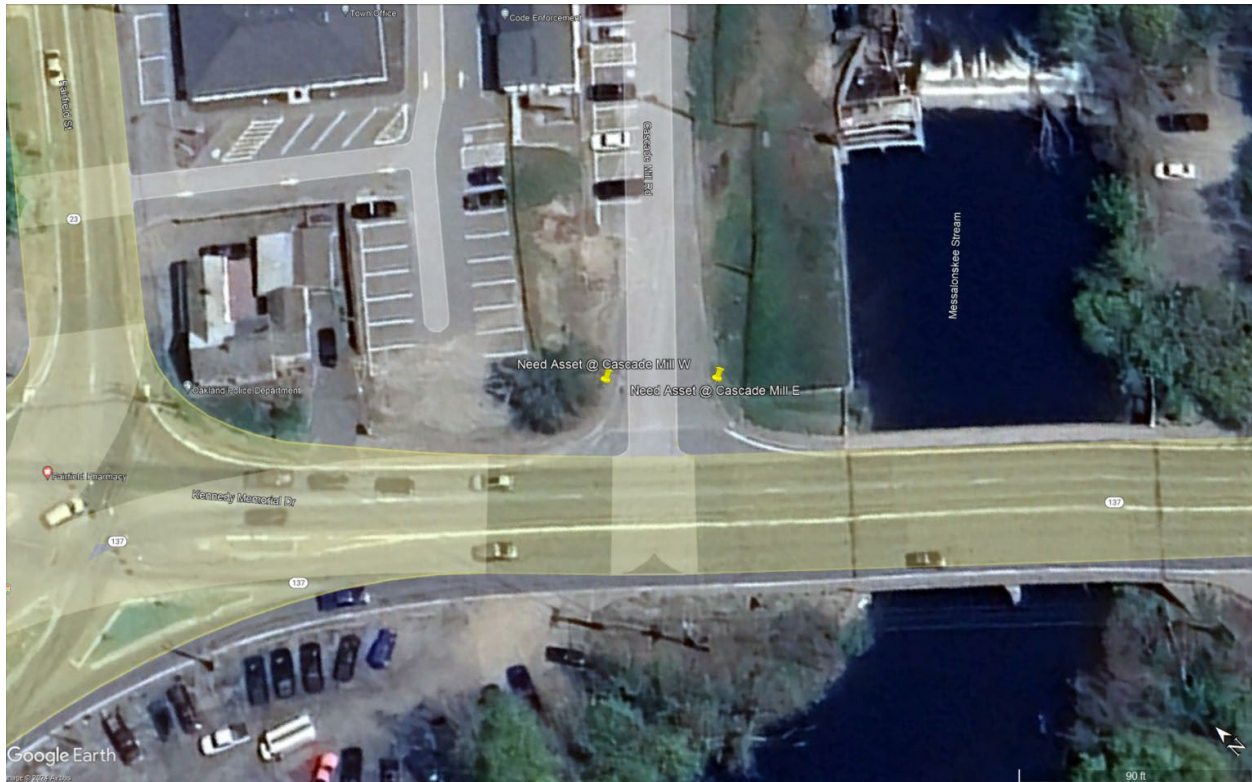
- Cut the existing sidewalk, curb, and 2' into Route 139, between the far sides of the tip downs, and remove the existing HMA.
- On both the West and the East side of the ramp, remove the existing tip downs.
- On both the West and the East side of the ramp place new 8' granite tip downs.
- Grade and pave 21'x5' of sidewalk and the removed shoulder pavement area.
- Place a 2'x5' detectable warning field.
- Grade, loam, and seed 21'x1' of disturbed lawn.

Latitude: 44.587337°

Longitude: -69.591045°

Reference: Standard Detail 801(20)

WIN 26594.40
Fairfield and Oakland Ramp Report



Oakland Route 11 ADA #1

New Asset – Cascade Road East

- Cut the existing sidewalk, curb, and 2' into Route 11 and remove the existing HMA. Ensure that the pavement cut in front of the curb extends to the nearby basin.
- Remove the 4th piece of curb from the end of the sidewalk, a 6' piece of curb on the radius.
- Remove the 6' pieces of curb on both sides of the eliminated curb and reset as tip downs.
- Grade and pave 18'x5' of sidewalk and the removed shoulder pavement area.
- Place a 2'x6' detectable warning field.
- Grade, loam, and seed 18'x2' of disturbed lawn.

Latitude: 44.547405°

Longitude: -69.712284°

Reference: Standard Detail 801(20)

WIN 26594.40
Fairfield and Oakland Ramp Report

Oakland Route 11 ADA #2

New Asset – Cascade Road West

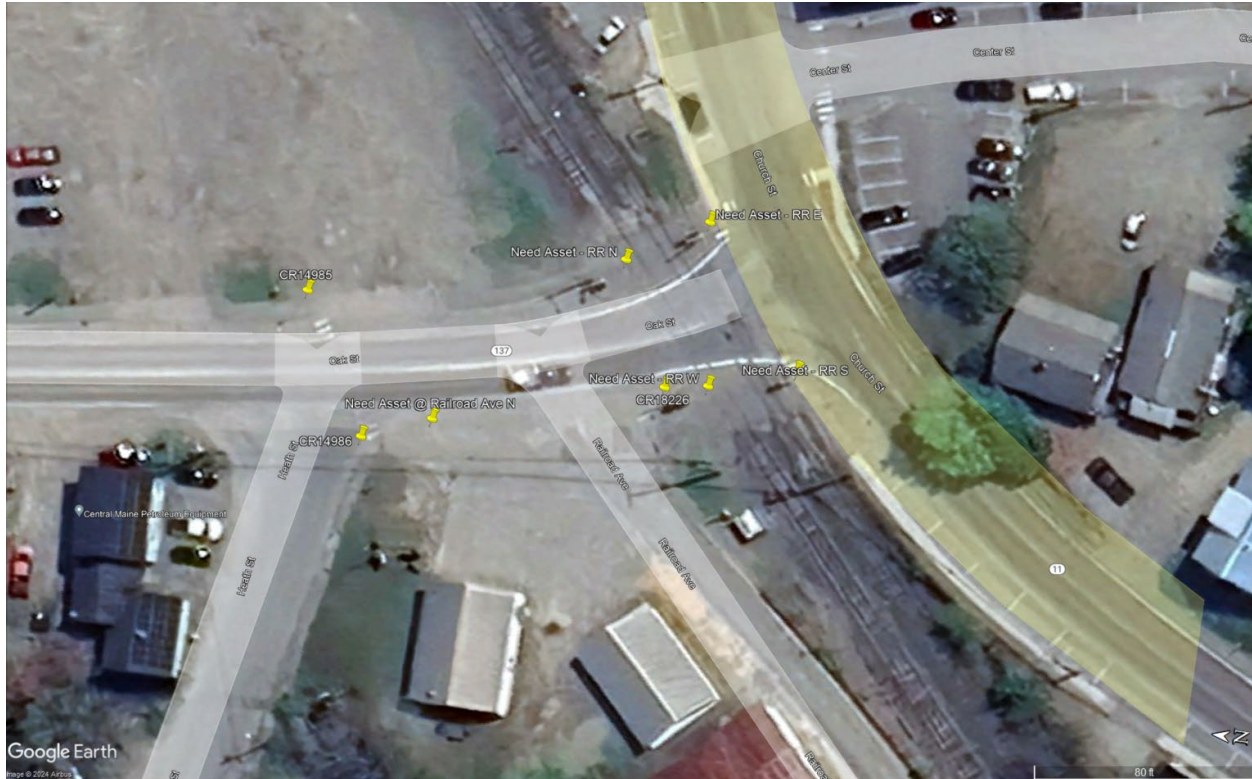
- Cut the existing sidewalk, curb, and 2' into Route 11 and remove the existing HMA. Ensure that the pavement cut in front of the curb extends to the nearby basin.
- Remove the 5th piece of curb from the end of the sidewalk, a 10' section on the radius.
- Remove the 6th piece of curb from the end of the sidewalk and replace with a 10' tip down. Reuse the previously removed piece of curb (5th piece) if possible.
- Remove and reset the 4th piece of curb from the end of the sidewalk, to create a 6' tip down.
- Grade and pave 22'x5' of sidewalk and the removed shoulder pavement area.
- Place a 2'x6' detectable warning field.
- Grade, loam, and seed 22'x2' of disturbed lawn.

Latitude: 44.547495°

Longitude: -69.712404°

Reference: Standard Detail 801(20)

WIN 26594.40
Fairfield and Oakland Ramp Report



Oakland Route 137 ADA #1

CR14985

- Cut the existing sidewalk, curb, and 2' into Route 137 and remove the existing HMA.
- Remove 8' of bituminous curb.
- Place an 8' bituminous tip down.
- Grade and pave 14'x5' of sidewalk and the removed shoulder pavement area.
- Place a 2'x5' detectable warning field.
- Grade, loam, and seed 14'x2' of disturbed lawn.

Latitude: 44.547862°

Longitude: -69.719115°

Reference: Standard Detail 801(27)

WIN 26594.40
Fairfield and Oakland Ramp Report

Oakland Route 137 ADA #2

CR14986

- Cut the existing sidewalk, curb, and 2' into Route 11, 8' into Heath Street and remove the existing HMA.
- Remove 8' of bituminous curb.
- Install an 8' bituminous tip down on Heath Street.
- Grade and pave 8'x5' of sidewalk and the removed shoulder pavement area.
- Place a 2'x5' detectable warning field.
- Place an 8' bituminous tip down + 5' of curb + 8' tip down on the south side of the detectable warning field.
- Construct 21'x5' of sidewalk.
- Remove the existing pavement behind the sidewalk.
- Grade, loam, and seed the disturbed lawn area and removed pavement area behind the sidewalk.

Latitude: 44.547777°

Longitude: -69.719305°

Reference: Standard Detail 801(20)

Oakland Route 137 ADA #3

New Asset – Railroad Avenue North

- Cut the existing entrance pavement and 2' into Route 11, south of the sidewalk constructed for CR14986. Remove the existing HMA.
- Construct 10'x5' of sidewalk, connecting into the constructed sidewalk for CR14986.
- Place a 2'x10' detectable warning field.
- Grade and pave the removed shoulder pavement area.
- Remove the existing pavement behind the constructed sidewalk.
- Grade, loam, and seed the disturbed lawn area and removed pavement area behind the sidewalk.

Latitude: 44.547733°

Longitude: -69.719279°

Reference: Standard Detail 801(22)

WIN 26594.40
Fairfield and Oakland Ramp Report

Oakland Route 137 ADA #4

CR18226

- Remove the existing curb.
- Starting on the southern end of the existing curb, place a 4' tip up and an 8' tip down.
- Construct 10'x5' of sidewalk.
- Place a 2'x5' detectable warning field.
- Grade and pave the removed shoulder pavement area and the area between the curb and sidewalk.
- Remove the existing pavement behind the constructed sidewalk.
- Grade, loam, and seed the removed pavement area behind the sidewalk.

Latitude: 44.547489°

Longitude: -69.719172°

Reference: Standard Detail 801(22)

Oakland Route 137 ADA #5

New Asset – Railroad West

- Cut and remove the existing pavement.
- Place a 2'x5' detectable warning field into the existing sidewalk.

Latitude: 44.547459°

Longitude: -69.719161°

Reference: Standard Detail 608(02)

Oakland Route 137 ADA #6

New Asset – Railroad North

- Cut and remove the existing pavement.
- Place a 2'x5' detectable warning field into the existing sidewalk.

Latitude: 44.547550°

Longitude: -69.719036°

Reference: Standard Detail 608(02)

Oakland Route 137 ADA #7

New Asset – Railroad East

- Cut and remove the existing pavement.
- Place a 2'x10' detectable warning field into the existing sidewalk.

Latitude: 44.547477°

Longitude: -69.718948°

Reference: Standard Detail 608(02)

WIN 26594.40
Fairfield and Oakland Ramp Report

Oakland Route 137 ADA #8

New Asset – Railroad South

- Cut and remove the existing pavement.
- Place a 2'x12' detectable warning field into the existing sidewalk.

Latitude: 44.547375°

Longitude: -69.719128°

Reference: Standard Detail 608(02)