

WIN 26594.30

Boothbay Harbor, Rockport and Camden Ramp Report

All measurements listed within the document are approximate and are for estimating purposes only. Actual measurements will be determined in the field and will be approved by the Resident.



Boothbay ADA#1

CR08674

Reconstruct Pedestrian Ramp on Northeast side of Oak St & McClintock St

- On Oak St. cut exiting pavement 2' into road from end of tip down, to the left 12'.
- Remove 12' of curb from existing end (Driveway opening) and remove pavement of sidewalk.
- Place 8' tip down, leaving rest open for DWF.
- Grade and Pave 12'x5' of sidewalk.
- Place 2x4 DWF.
- Grade, loam, seed disturbed area behind sidewalk.

Latitude: 43.853006°

Longitude: -69.628516°

Reference: Standard Detail 801(27)

WIN 26594.30
Boothbay Harbor, Rockport and Camden Ramp Report

Boothbay ADA #2

CR16969 & CR08672

Reconstruct Pedestrian Ramp on Southeast side of Oak St & McClintock St

- Cut and remove 2' in front of curb 15' up oak street and 8' down on McClintock,
- Remove curb on both sides and replace with 15' tip down on oak, opening for DWF, 4' tip up, 4' tip down, DWF opening then 8' tip up. Radius around corner.
- Place 2x4 DWF on oak, and 2x4 DWF on McClintock.
- Grade, loam, seed disturbed area behind sidewalk.

Latitude: 43.852971°

Longitude: -69.628404°

Reference: Standard Detail 801(16)

Boothbay ADA #3

CR08673

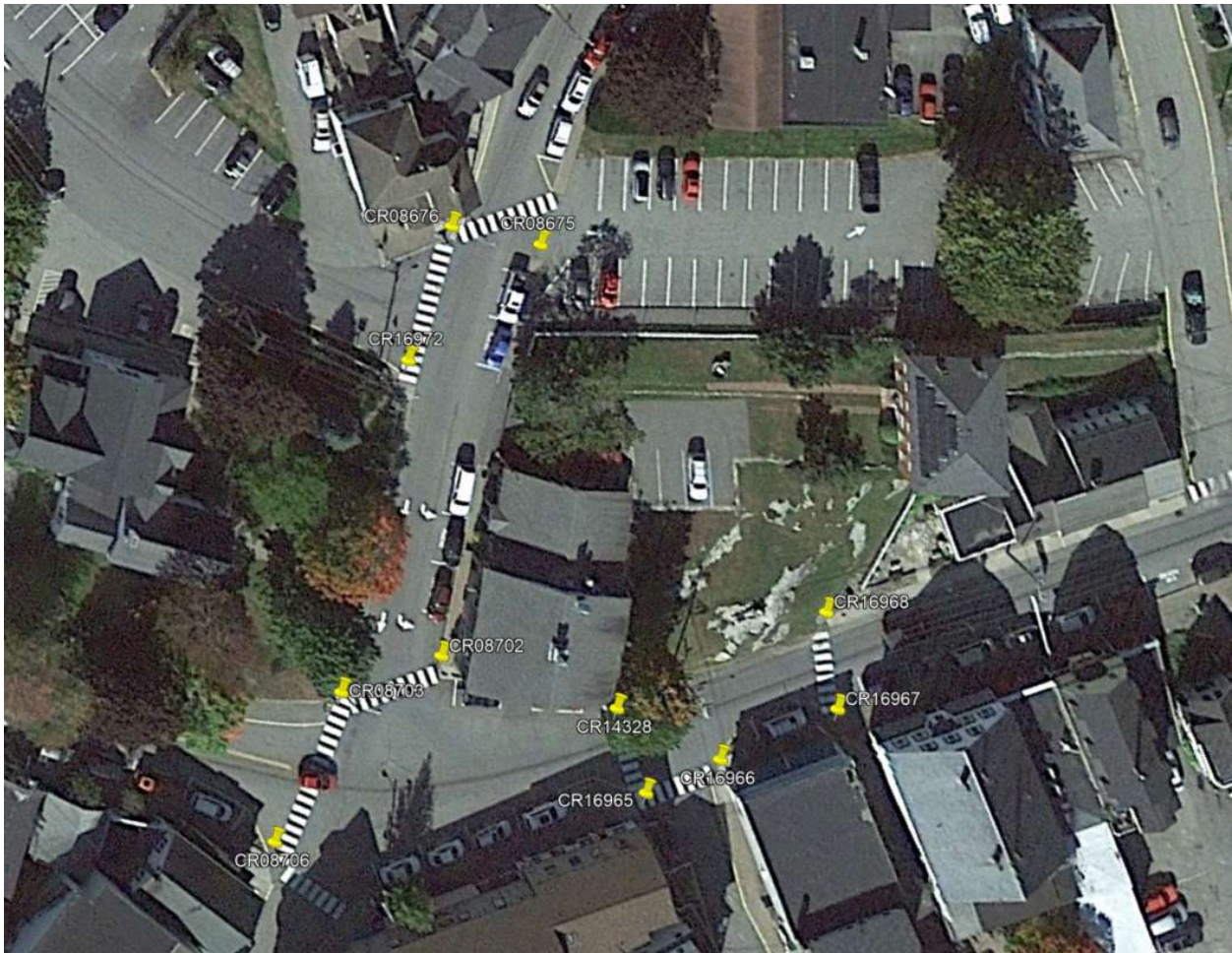
- Cut existing pavement 2' into road on oak street from end of tip down, to the right 8'.
- Remove 8' of curb.
- Place 8' Tip down
- Grade and pave 8'x5' plus transition into sideroad.
- Place 2x4 DWF.
- Grade, loam, seed disturbed area behind sidewalk.

Latitude: 43.852835°

Longitude: -69.628399°

Reference: Standard Detail 801(22)

WIN 26594.30
Boothbay Harbor, Rockport and Camden Ramp Report



Boothbay ADA #4

CR08675

- Cut existing pavement 2' into road on oak street from end of tip down, to the right 11'.
- Remove Granite curb, 2 pieces. Reset 7' tip down.
- Grade and pave 12'x5' plus transition into parking lot.
- Place 2x4 DWF for across the road.
- Grade, loam, seed disturbed area behind sidewalk.

Latitude: 43.852101°

Longitude: -69.628248°

Reference: Standard Detail 801(22)

Boothbay ADA #5

CR08676

- Cut and Place 2x6 DWF into existing Concrete sidewalk.

Latitude: 43.852068°

Longitude: -69.628362°

Reference: Standard Detail 801(12)

WIN 26594.30
Boothbay Harbor, Rockport and Camden Ramp Report

Boothbay ADA #6

CR16972

- Cut out tip down area, leaving granite curb.
- Remove pavement and brick area about 6'x6'.
- Place Concrete in this area to correct cross slope.
- Place 2x6 DWF in the concrete sidewalk.
- Grade, loam, seed disturbed area behind sidewalk.

Latitude: 43.851924°

Longitude: -69.628269°

Reference: Standard Detail 801(12)

Boothbay ADA #7

CR08702

- Cut and Place 2x4 DWF into existing Concrete Sidewalk.

Latitude: 43.851744°

Longitude: -69.627961°

Reference: Standard Detail 801(12)

Boothbay ADA #8

CR08703

- Cut and Place 2x4 DWF into existing Concrete Sidewalk.

Latitude: 43.851668°

Longitude: -69.628039°

Reference: Standard Detail 801(22)

Boothbay ADA #9

CR08706

- Cut and Place 2x8 DWF into existing Concrete Sidewalk.

Latitude: 43.851483°

Longitude: -69.627959°

Reference: Standard Detail 801(12)

WIN 26594.30
Boothbay Harbor, Rockport and Camden Ramp Report

Boothbay ADA #10

CR14328

- Make Bump-Out from end of handrail towards center of road.
- Sawcut Roadway out from gutter line 8', as well as concrete at end of handrail.
- Construct sidewalk when pavement removed. Match roadway and go toward handrail at 8% or flatter ramp to match into existing concrete, with a 4x4 area for a turning space.
- Use New Granite curb as tip down to tie into existing concrete and then make curb on other side of opening towards the tree.
- Place 2x4 DWF.
- Grade, loam, seed disturbed area behind sidewalk.

Latitude: 43.851823°

Longitude: -69.627750°

Reference: Standard Detail 801(12)

Boothbay ADA #11

CR16965

- Saw cut 2' out in road from tip down on granite curb (Towards CB).
- Sawcut into roadway on one lane side road for match point purposes.
- Reset granite curb to correct matching grade.
- Regrade and place new Concrete sidewalk on corner.
- Place 2x8 DWF in concrete.
- Regrade and pave landing/turning space on edge of sideroad.

Latitude: 43.851780°

Longitude: -69.627641°

Reference: Standard Detail 801(12)

Boothbay ADA #12

CR16966

- Cut and Place 2x8 DWF into existing sidewalk.

Latitude: 43.851858°

Longitude: -69.627595°

Reference: Standard Detail 801(12)

WIN 26594.30
Boothbay Harbor, Rockport and Camden Ramp Report

Boothbay ADA #13

CR16968

- Sawcut 2' in front of 3 pieces of granite curb.
- Remove those pieces of granite and replace 1 back as a tip down.
- Remove concrete sidewalk and replace with New concrete getting correct slopes.
- Place 2x4 DWF for across the road.
- Grade, loam, seed disturbed area behind sidewalk.

Latitude: 43.852037°

Longitude: -69.627626°

Reference: Standard Detail 801(22)

Boothbay ADA #14

CR16967

- Remove brick sidewalk for 1 piece of curb length. Replace with Concrete to correct slope.
- Place 2x8 DWF in concrete.
- Regrade and Re Pave turning/landing area with pavement at end of tip down.

Latitude: 43.851963°

Longitude: -69.627521°

Reference: Standard Detail 801(22)

WIN 26594.30
Boothbay Harbor, Rockport and Camden Ramp Report



Boothbay ADA #15

CR08713

- Cut and Place 2x8 DWF into existing sidewalk.

Latitude: 43.854694°

Longitude: -69.625946°

Reference: Standard Detail 801(12)

Boothbay ADA #16

CR08712

- Cut and Place 2x8 DWF into existing sidewalk.

Latitude: 43.854835°

Longitude: -69.625877°

Reference: Standard Detail 801(22)

WIN 26594.30
Boothbay Harbor, Rockport and Camden Ramp Report



Boothbay ADA#17

CR (Need Asset @ Todd Ave)

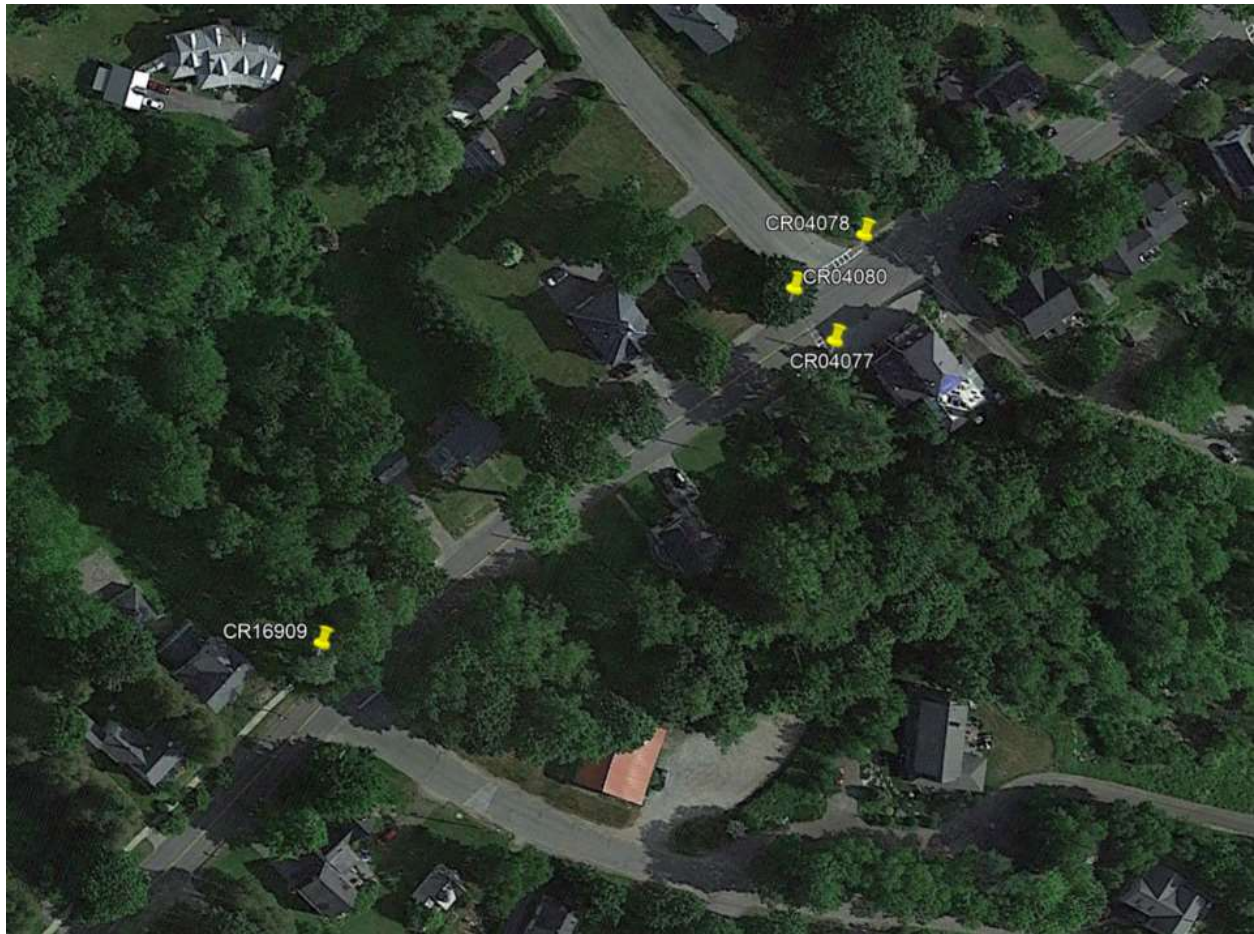
- Cut and Place 2x4 DWF into existing sidewalk.

Latitude: 43.851396°

Longitude: -69.629300°

Reference: Standard Detail 801(12)

WIN 26594.30
Boothbay Harbor, Rockport and Camden Ramp Report



Rockport ADA #1

CR16909

- Cut and Place 2x8 DWF into existing sidewalk.

Latitude: 44.182872°

Longitude: -69.078563°

Reference: Standard Detail 801(24)

Rockport ADA #2

CR04077

- Cut and Place 2x4 DWF into existing sidewalk. On Left side of pole (when looking at it).

Latitude: 44.183678°

Longitude: -69.077442°

Reference: Standard Detail 801(12)

WIN 26594.30
Boothbay Harbor, Rockport and Camden Ramp Report

Rockport ADA #3

CR04080

- Cut into roadway in front of curb 2' from existing curb to the CB. And wrap around up side road.
- Remove 4' of existing Bit curb (on both mainline and side street).
- Remove pavement and regrade to correct slopes.
- Place Bit curb 8' Tip down, opening for DWF, then tip up wrapped around pole/and behind CB, Opening for sideroad DWF, then Tip up to match existing.
- Place 2x4 DWF on Maine Line side and a 2x4 DWF on side road side.
- Repave to slope.
- Grade, loam, seed disturbed area behind sidewalk.

Latitude: 44.183761°

Longitude: -69.077576°

Reference: Standard Detail 801(17)

Rockport ADA #4

CR04078

- Cut and remove existing pavement around utility pole and to getter line of side road and around CB.
- 12' of new curb from utility pole and 8' tip down included in that.
- Regrade and pave to slope sidewalk.
- Place 2x4 DWF.
- Grade, loam, seed disturbed area behind sidewalk.

Latitude: 44.183887°

Longitude: -69.077433°

Reference: Standard Detail 801(22)

WIN 26594.30
Boothbay Harbor, Rockport and Camden Ramp Report



Rockport ADA #5

CR16859

- Remove and Repave to slope turning spot at end of Concrete sidewalk.
- Place 2x4 DWF.
- Grade, loam, seed disturbed area behind sidewalk.

Latitude: 44.187714°

Longitude: -69.072348°

Reference: Standard Detail 801(12)

WIN 26594.30
Boothbay Harbor, Rockport and Camden Ramp Report



Rockport ADA #6

CR (Need Asset @ YMCA East)

- Sawcut pavement out on corner of sidewalk and YMCA sidewalk entrance.
- Extend esplanade 3' towards YMCA entrance.
- Regrade and Pave sidewalk.
- Place 2x6 DWF.
- Grade, loam, seed disturbed area behind sidewalk.

Latitude: 44.196912°

Longitude: -69.071132°

Reference: Standard Detail 801(27)

Rockport ADA #7

CR (Need Asset @ YMCA West)

- Cut out existing pavement on corner.
- Place 4' Tip up/ 4' Tip down curb with 5' opening then another 4' Tip up/ 4' Tip down up side road.
- Place 2x4 DWF.
- Grade, loam, seed disturbed area behind sidewalk.

Latitude: 44.196944°

Longitude: -69.071264°

Reference: Standard Detail 801(12)

WIN 26594.30
Boothbay Harbor, Rockport and Camden Ramp Report



Rockport ADA #8

CR16910

- Cut out pavement and regrade to correct slope.
- Place 2x4 DWF.
- Grade, loam, seed disturbed area behind sidewalk.

Latitude: 44.199624°

Longitude: -69.070195°

Reference: Standard Detail 801(12)

WIN 26594.30
Boothbay Harbor, Rockport and Camden Ramp Report

Rockport ADA #9

CR16829

- Remove 7'x7' of pavement and regrade to correct slope.
- Cut and Place 2x7 DWF into existing sidewalk.

Latitude: 44.199561°

Longitude: -69.070050°

Reference: Standard Detail 801(12)

Rockport ADA #10

CR14118

- Cut out pavement and regrade to correct slopes.
- Place 2x6 DWF.
- Grade, loam, seed disturbed area behind sidewalk.

Latitude: 44.199697°

Longitude: -69.069981°

Reference: Standard Detail 801(22)

WIN 26594.30
Boothbay Harbor, Rockport and Camden Ramp Report



Camden ADA #1

CR (Need Asset @ Church)

- Cut and Place 2x12 DWF.

Latitude: 44.206279°

Longitude: -69.067329°

Reference: Standard Detail 801(12)

Camden ADA #2

CR (Need asset @ Across Church)

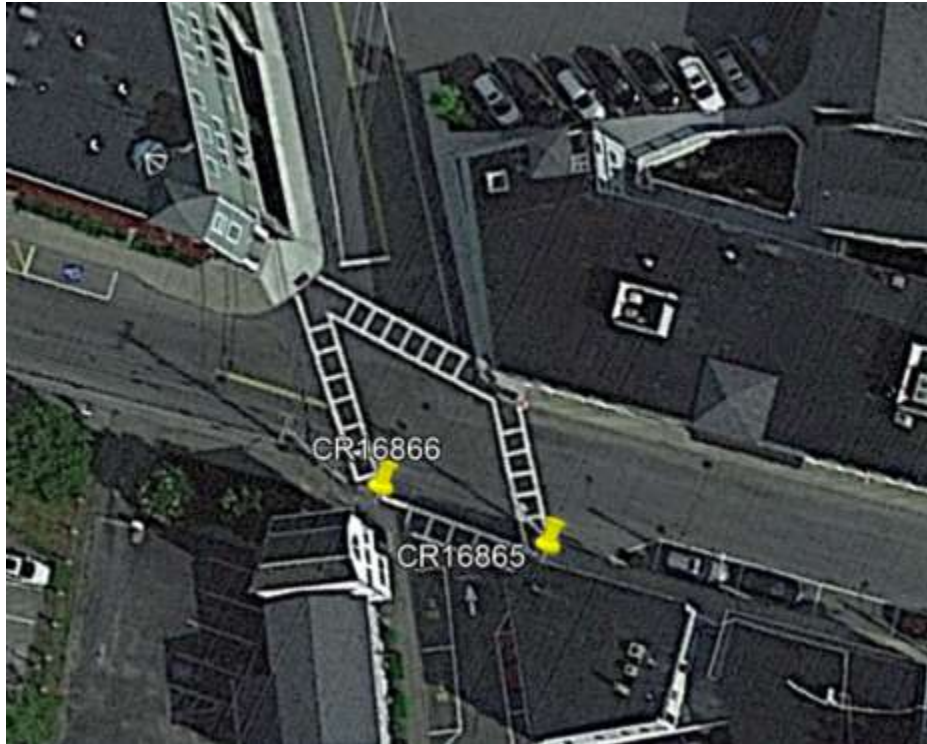
- Cut 2' into pavement on Mainline.
- Remove existing curb 8' on north side and 8' on south side of opening.
- Replace 6' tip down on north, with 5' opening and 10' Tip down on south side.
- Regrade and pave to correct slopes.
- Place 2x4 DWF.
- Grade, loam, seed disturbed area behind sidewalk.

Latitude: 44.206249°

Longitude: -69.067202°

Reference: Standard Detail 801(20)

WIN 26594.30
Boothbay Harbor, Rockport and Camden Ramp Report



Camden ADA #3

CR16865

- Cut and place 2x8 DWF.

Latitude: 44.210037°

Longitude: -69.066332°

Reference: Standard Detail 801(12)

Camden ADA #4

CR16866

- Cut and place 2x4 DWF between Curb and Handrail on Washington street side.
- Cut and place 2x4 DWF between Telephone pole and Handrail on Mechanic street side.

Latitude: 44.209996°

Longitude: -69.066489°

Reference: Standard Detail 801(12)