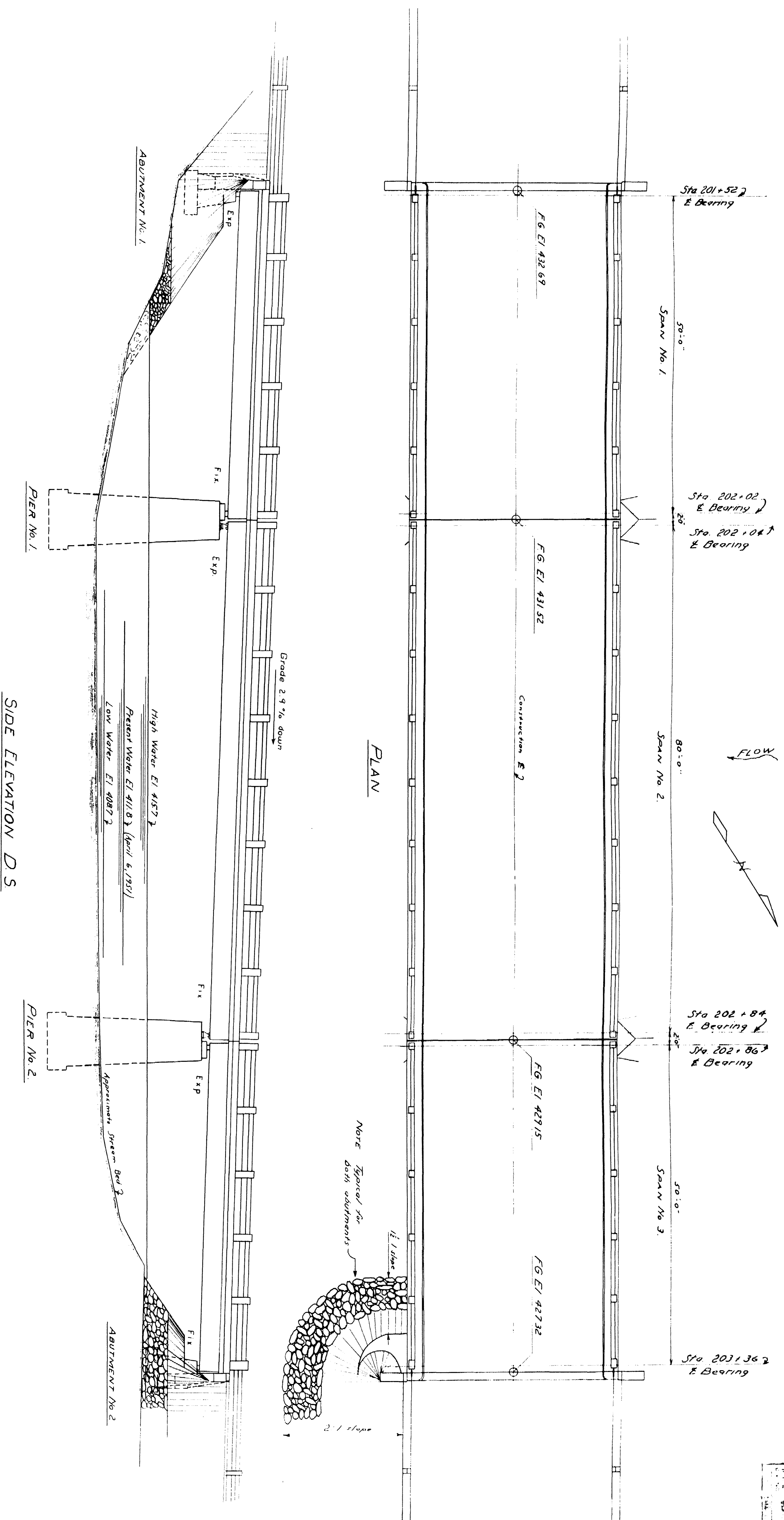


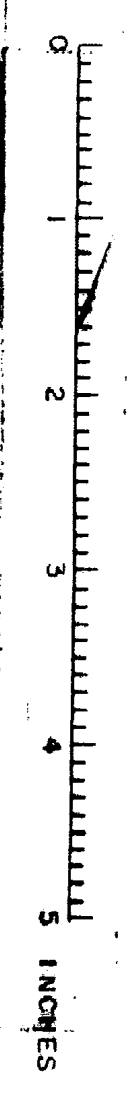
DATE: 7/20/51  
 DRAWN BY: J. B. 20



Loading H20-S16-44  
 Concrete Classification

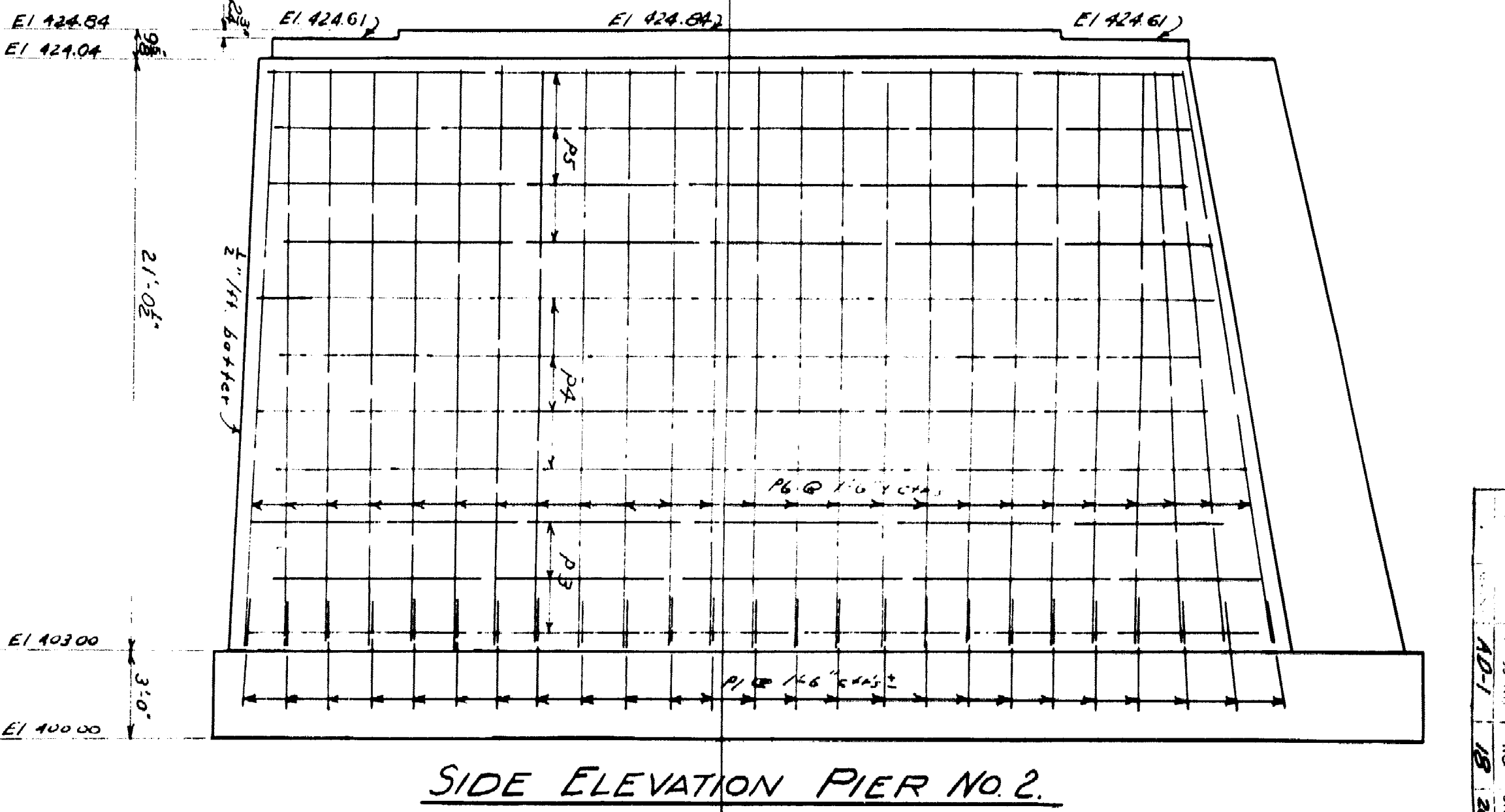
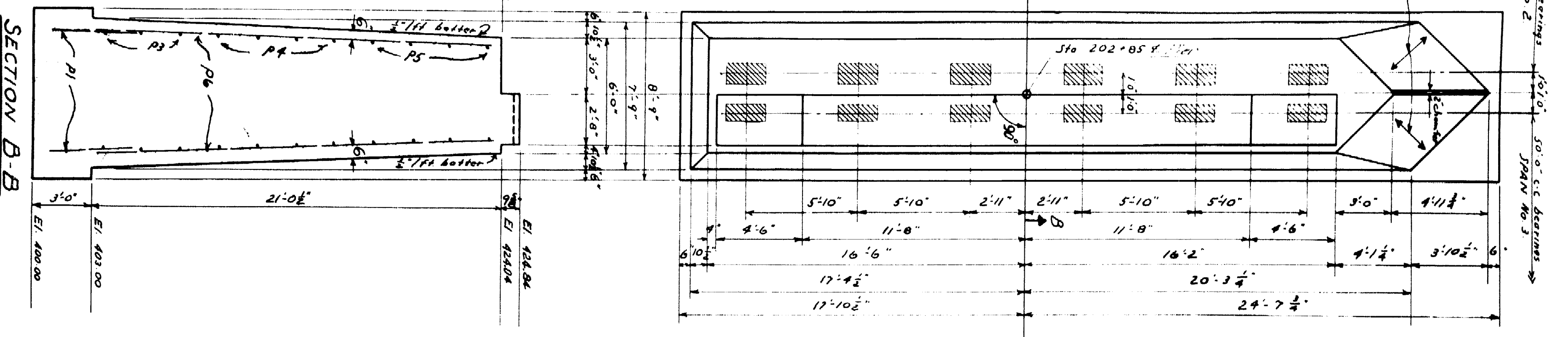
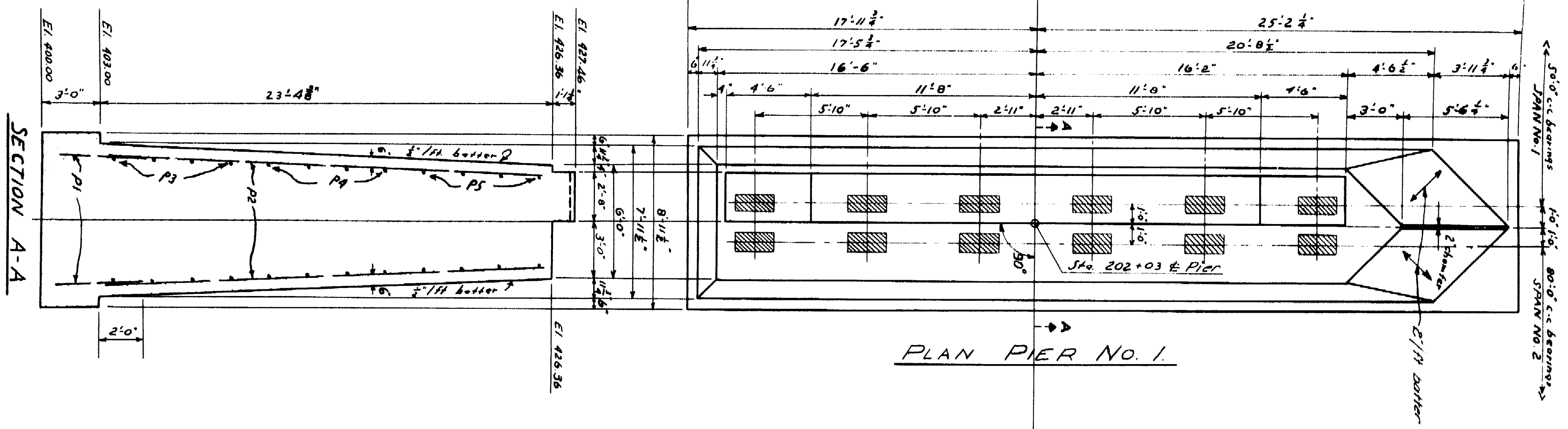
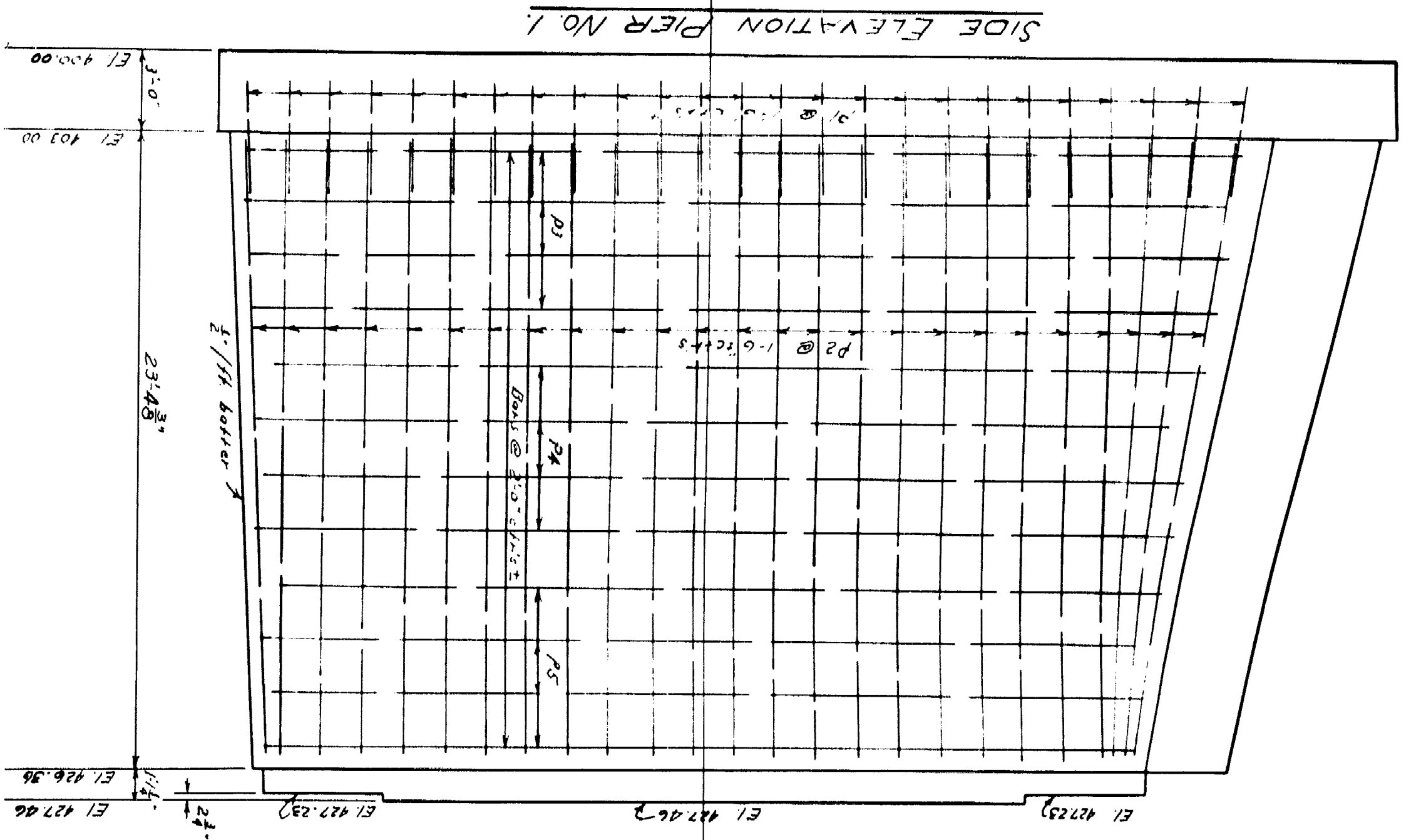
- Abutments - Class B
  - Piers - Class B
  - Super slab - Class A
  - Rail - Class Y
- $f_s = 18000 \text{ psi}$   
 $f_c = 1200$   
 $n = 10$

DESIGNED BY: HANLTON  
 THOMPSON  
 CHECKED BY: J. B. 20  
 STATE HIGHWAY COMMISSION  
 BRIDGE DIVISION  
**BRIDGE**  
 OVER  
**LITTLE MADAWASKA RIVER**  
 IN THE TOWN OF  
**CARIBOU**  
**AROOSTOOK COUNTY**  
 GENERAL PLAN and ELEVATION  
 SHEET / OF 6 AUGUST, 1951 JULY 1951









SECTION A-A

SECTION B-B

NOTE: Dress shaded areas 1" larger all around than size of bearing piles, to exact elevations.

DESIGN - HAMILTON  
 CHECK - VSE  
 STATE HIGHWAY COMMISSION  
 BRIDGE DIVISION  
 BRIDGE -  
 OVER  
 LITTLE MADAWASKA RIVER  
 IN THE TOWN OF  
 CARIBOU  
 AROOSTOOK COUNTY  
 PIERS NO. 1 & NO. 2  
 SHEET 4 OF 6 AUGUSTA, MAINE  
 JULY 1981

54-82

0 1 2 3 4 5 INCHES



