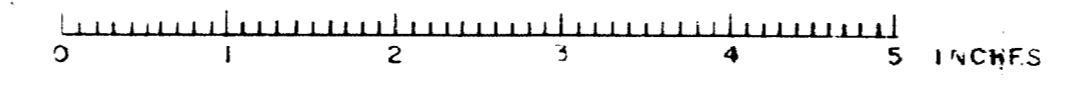
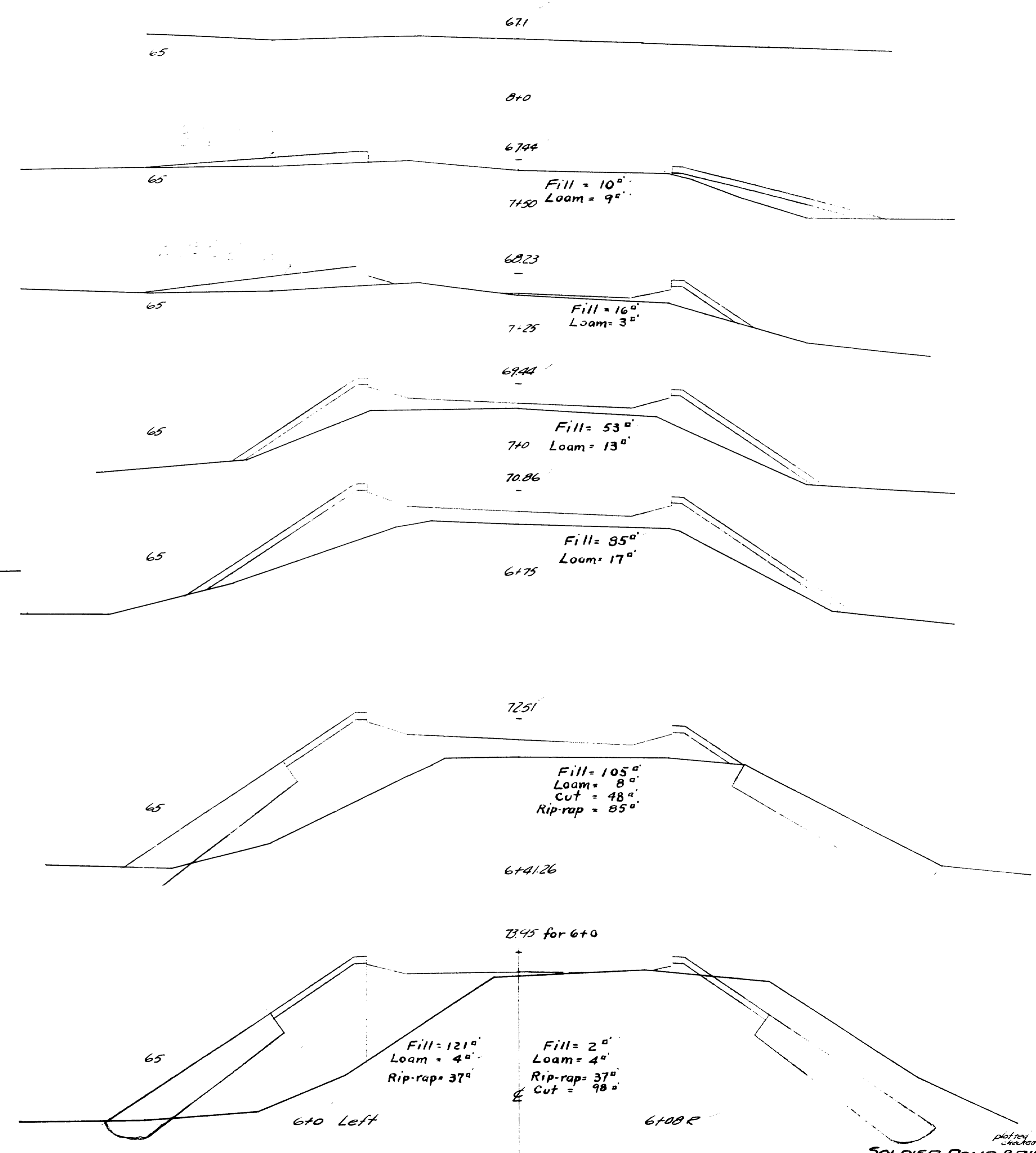
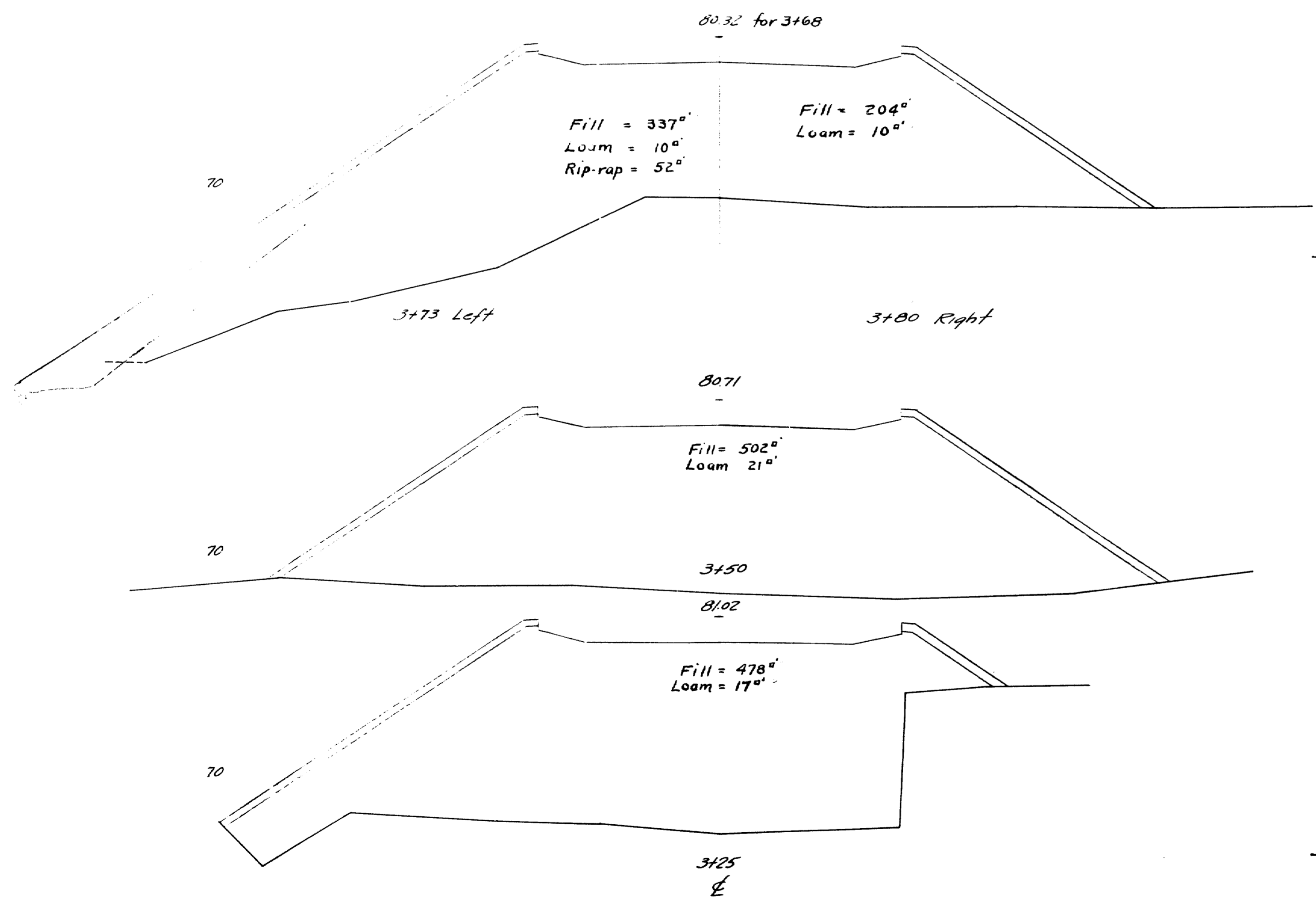
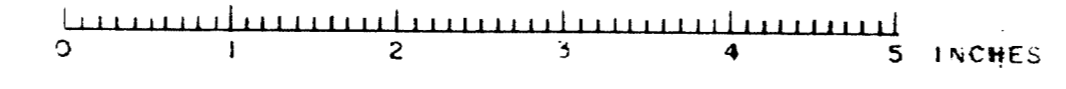


STATE HIGHWAY COMMISSION
 BRIDGE DIVISION
 SOLDIER POND BRIDGE
 WALL GRASS
 CROSS SECTIONS
 Sheet 2 of 9 August 16, 1946

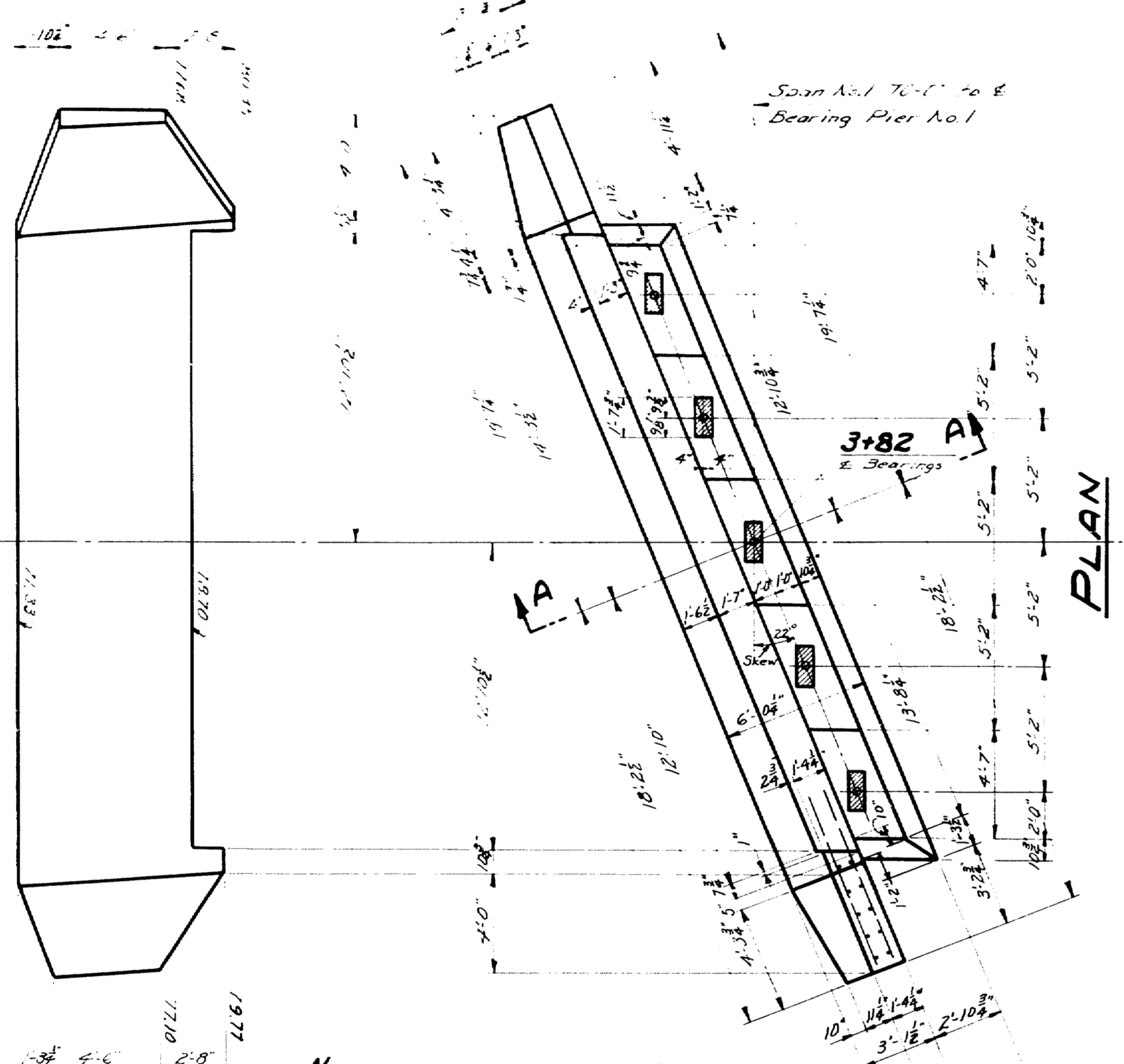




SOLDIER POND BRIDGE
WALLAGESS
Sheet 3 of 9 August, No. Feb 46
46-170



REAR ELEVATION

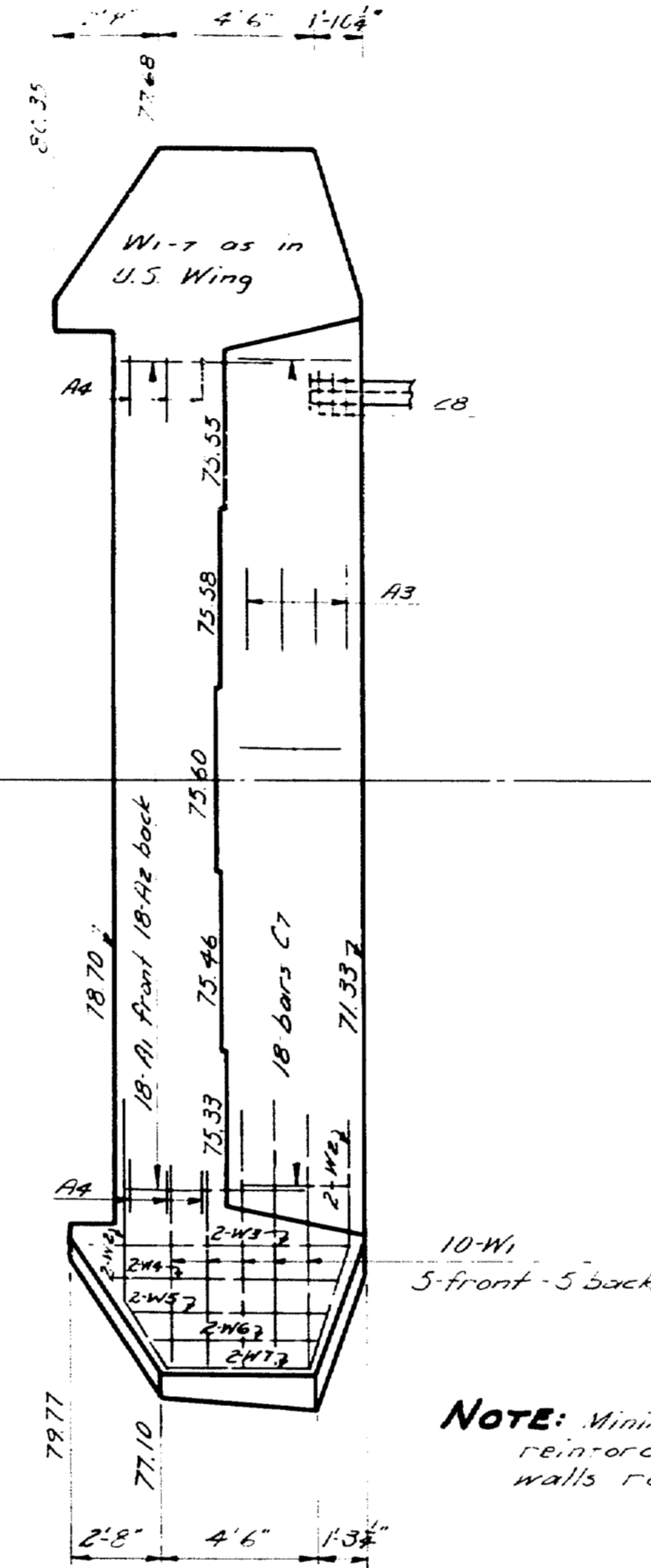


NOTE: Dress shaded bearing areas plus 1' all around to exact elevation.

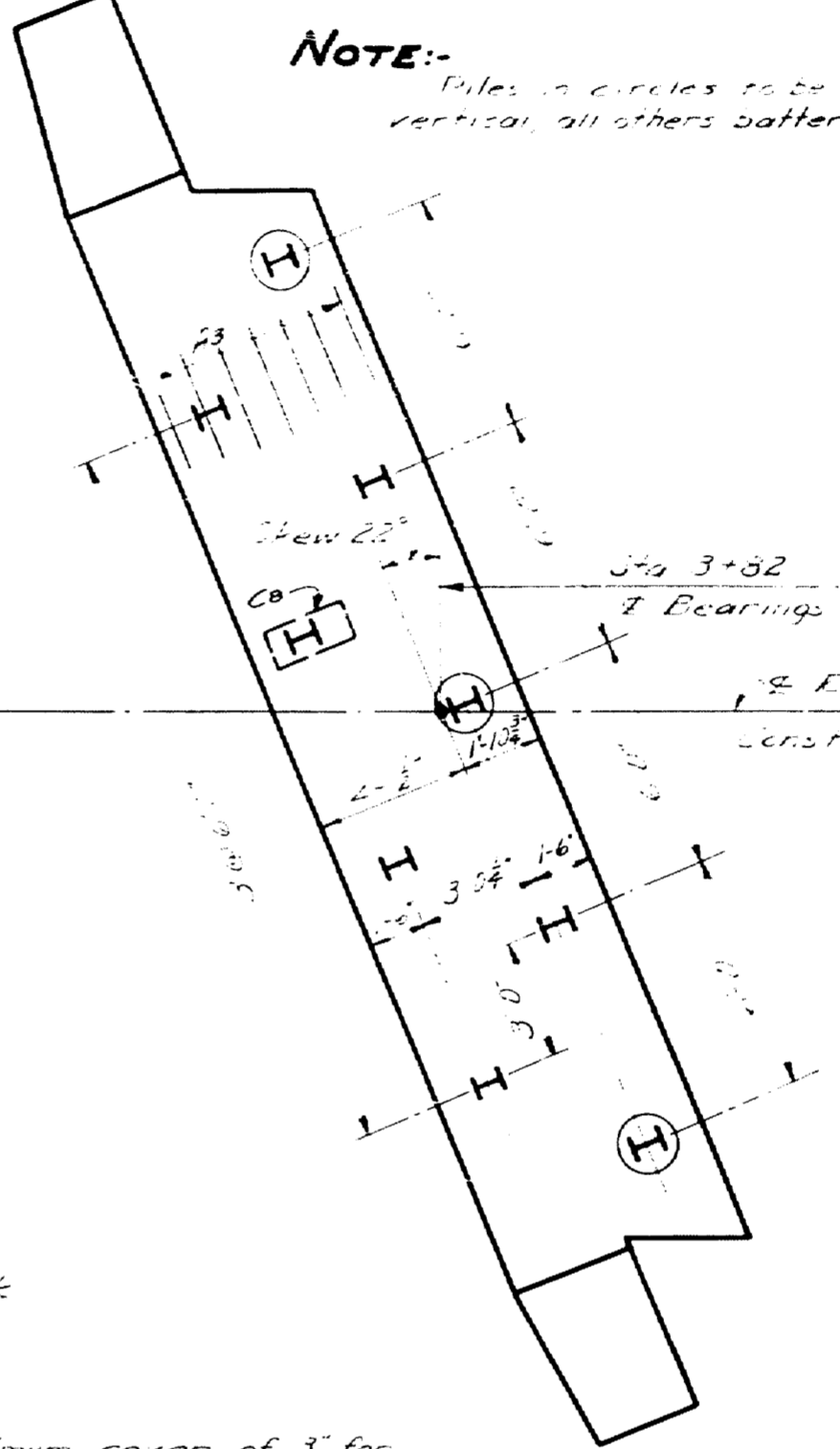
See Sheet 7 for note about covering 1/2\"/>

PLAN

FRONT ELEVATION



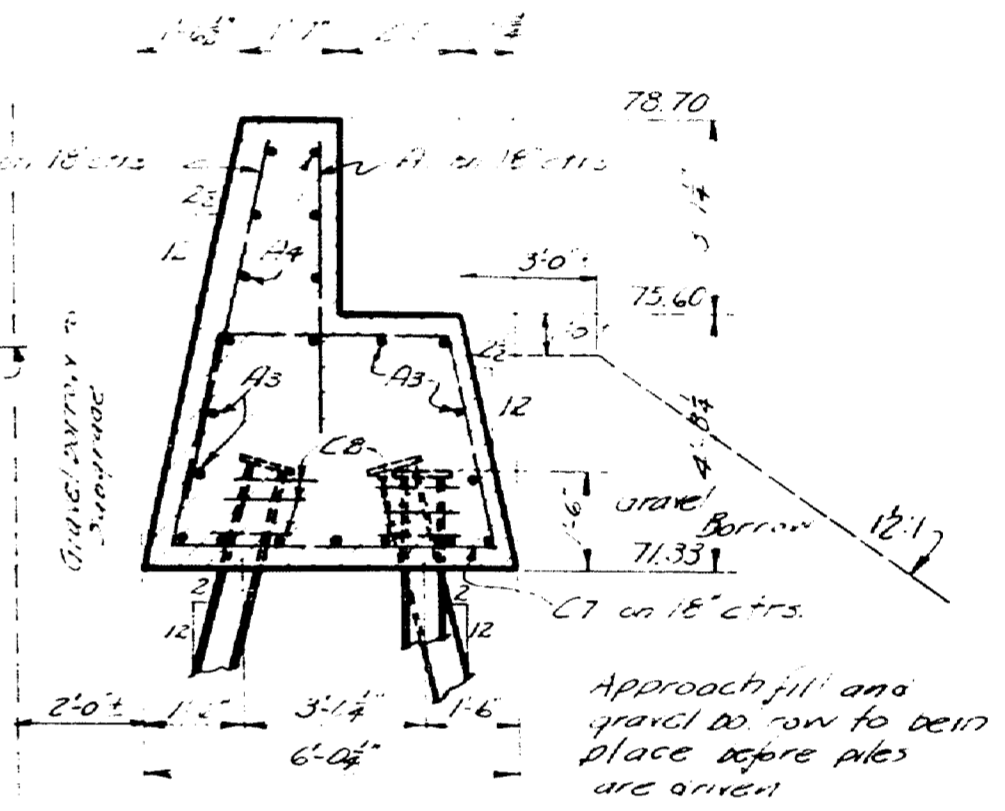
NOTE: Minimum cover of 3\"/>



PILE PLAN

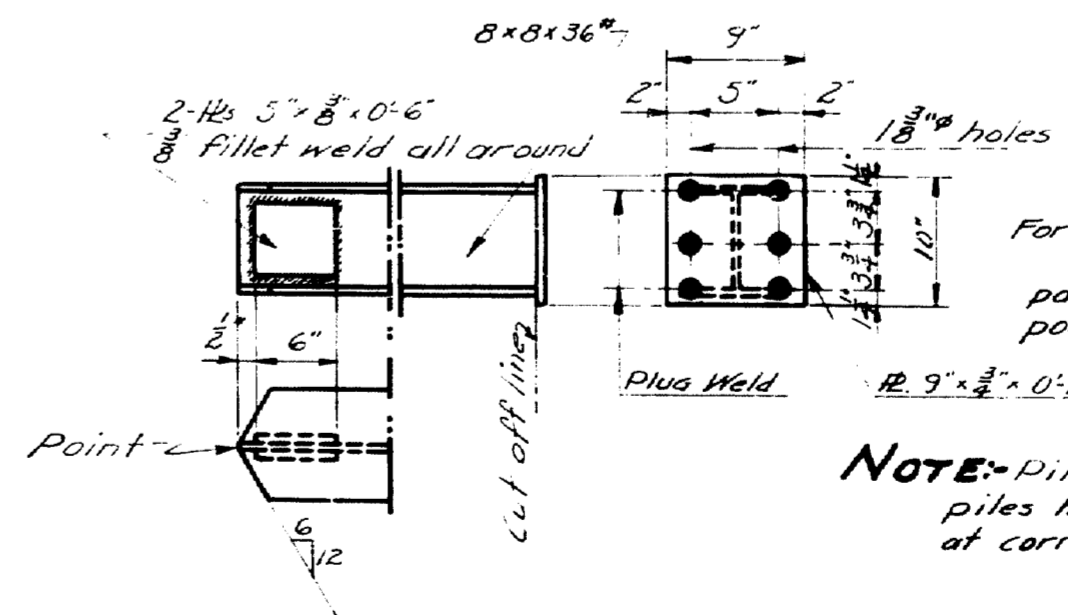
Eq'd. 18 piles 18x36"
Load per pile 30T
Estimated Length of Piles 40ft.

SECT. A-A



Approach fill and gravel to now to be placed before piles are driven.

END ELEV.

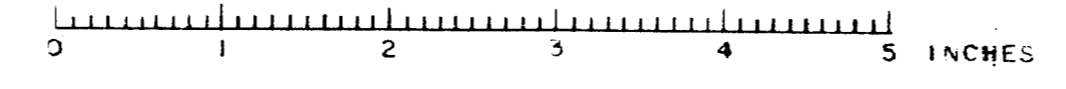


PILE DETAIL

NOTE: Pile caps to be welded after piles have been driven and cut off at correct elevation.

DESIGN - EVERETT	BRIDGE - 3901
TRACE - CLARK	
CHECK - [Signature]	
STATE HIGHWAY COMMISSION BRIDGE DIVISION	
SOLDIER POND BRIDGE OVER FISH RIVER IN THE PLANTATION OF WALLGRASS AROSTOOK COUNTY "ABUTMENT NO. 1"	
SHEET 4 OF 9 AUGUSTA, MAINE SEPTEMBER, 1945	

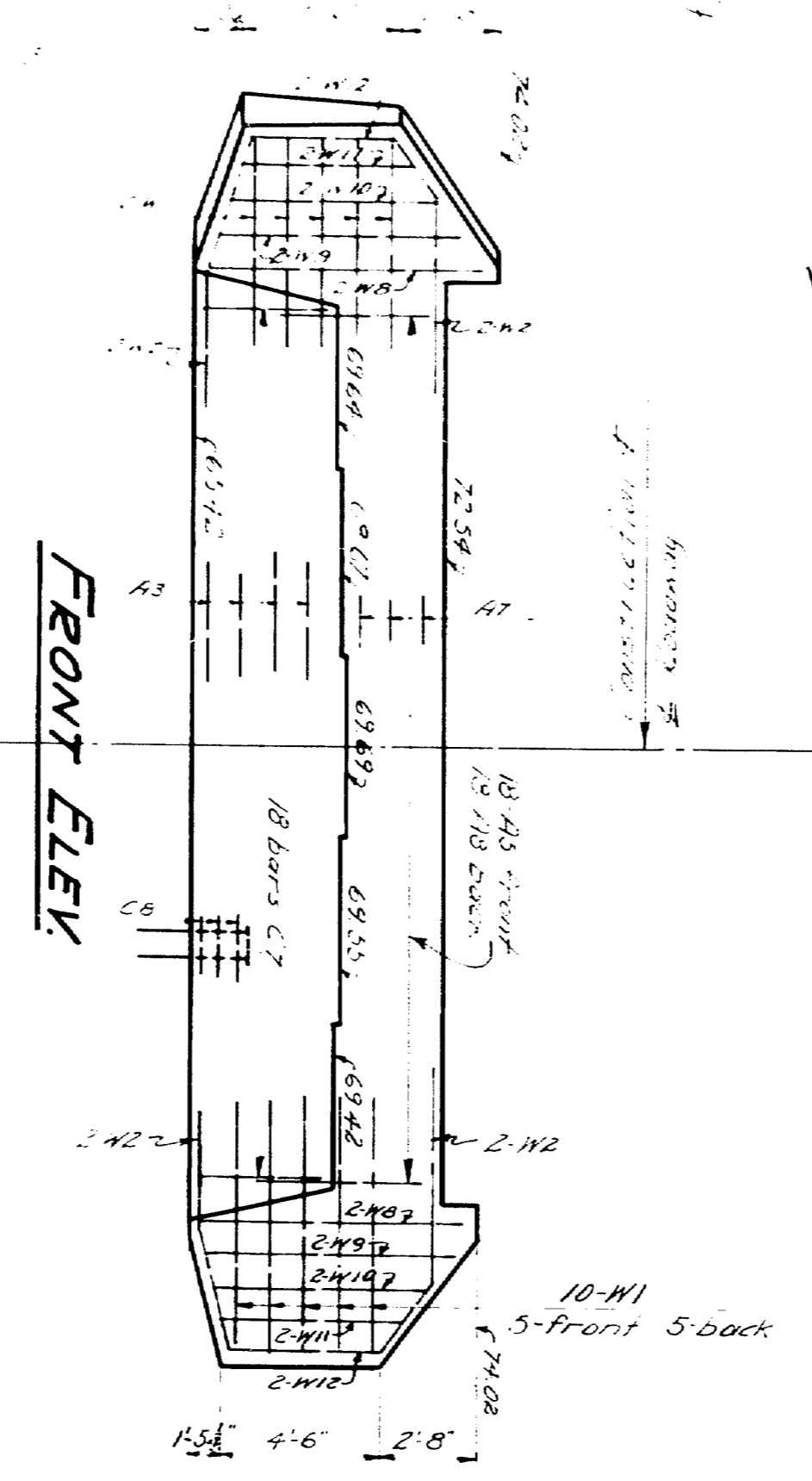
46-171



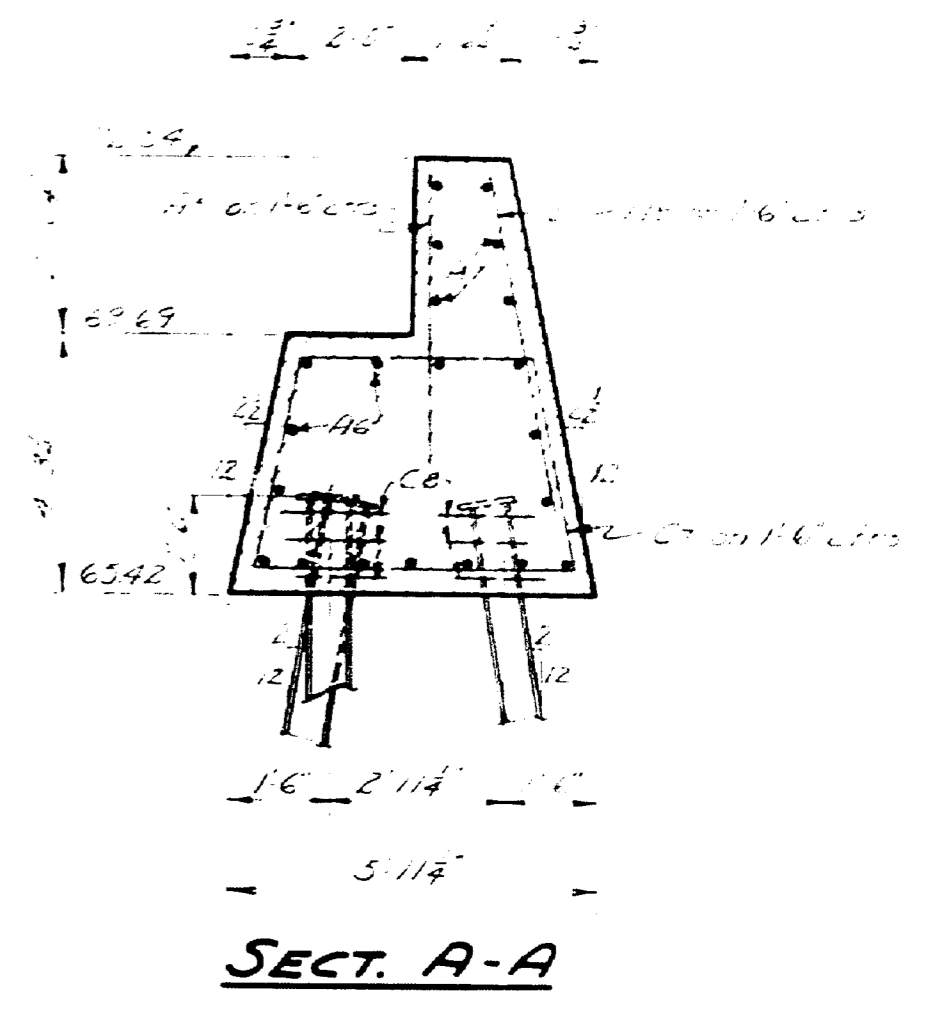
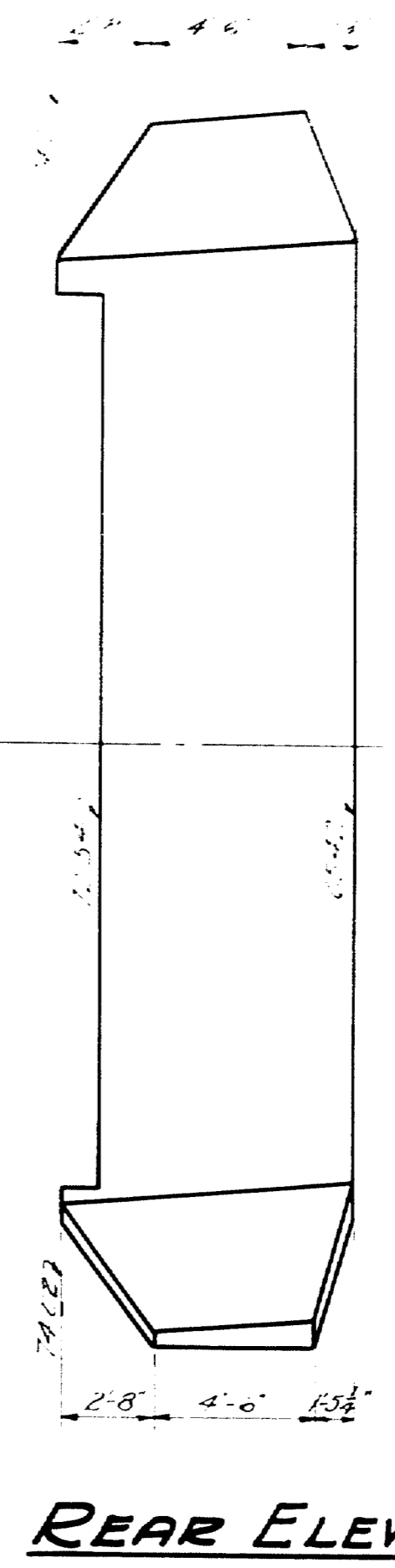
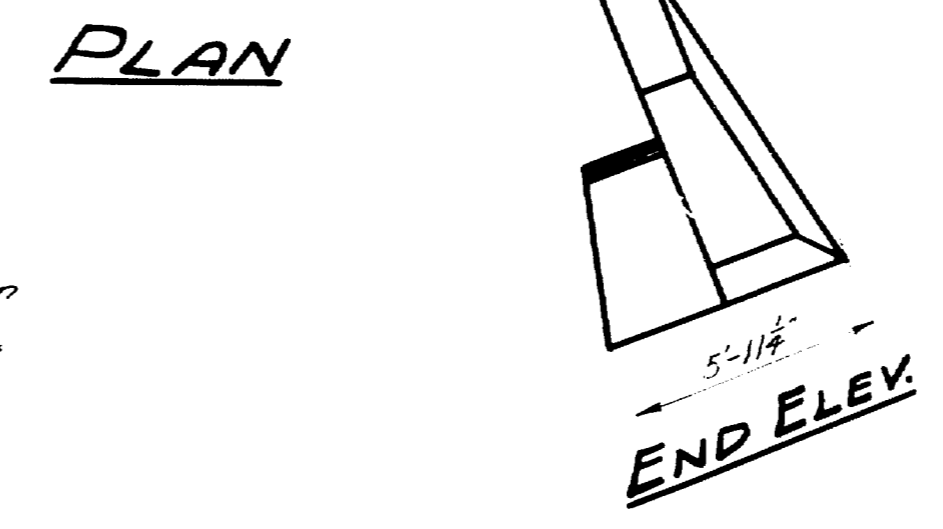
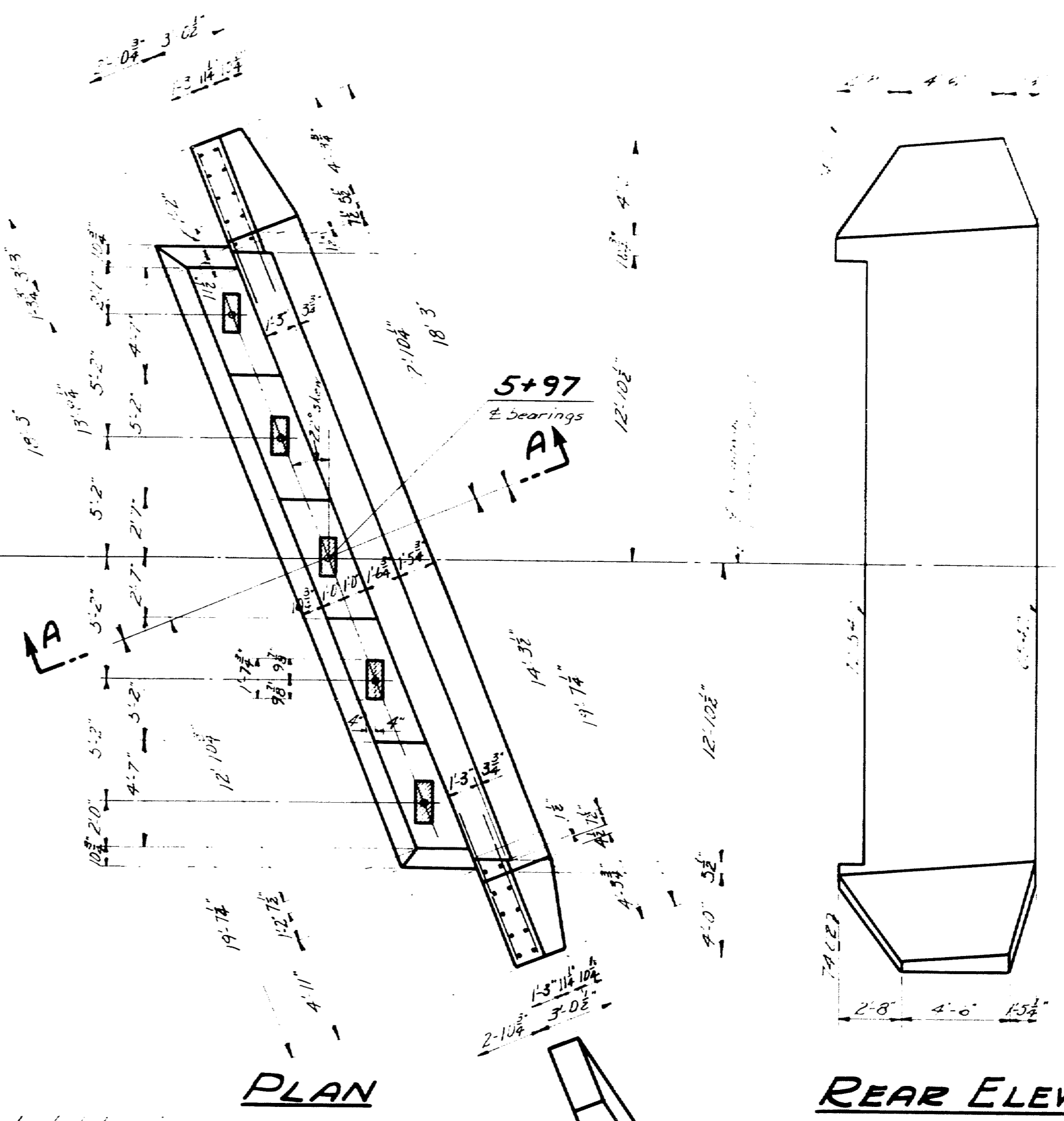


PILE PLAN
 Base 9-piles 48x36"
 Load per pile 30T±
 Estimated length of Piles 40ft.

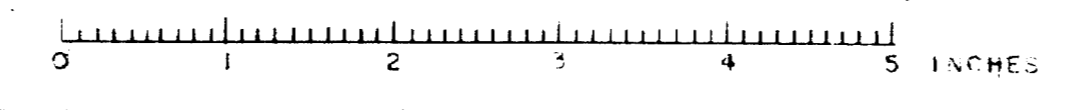
NOTE:-
 Piles in rows to be vertical, all slants battered

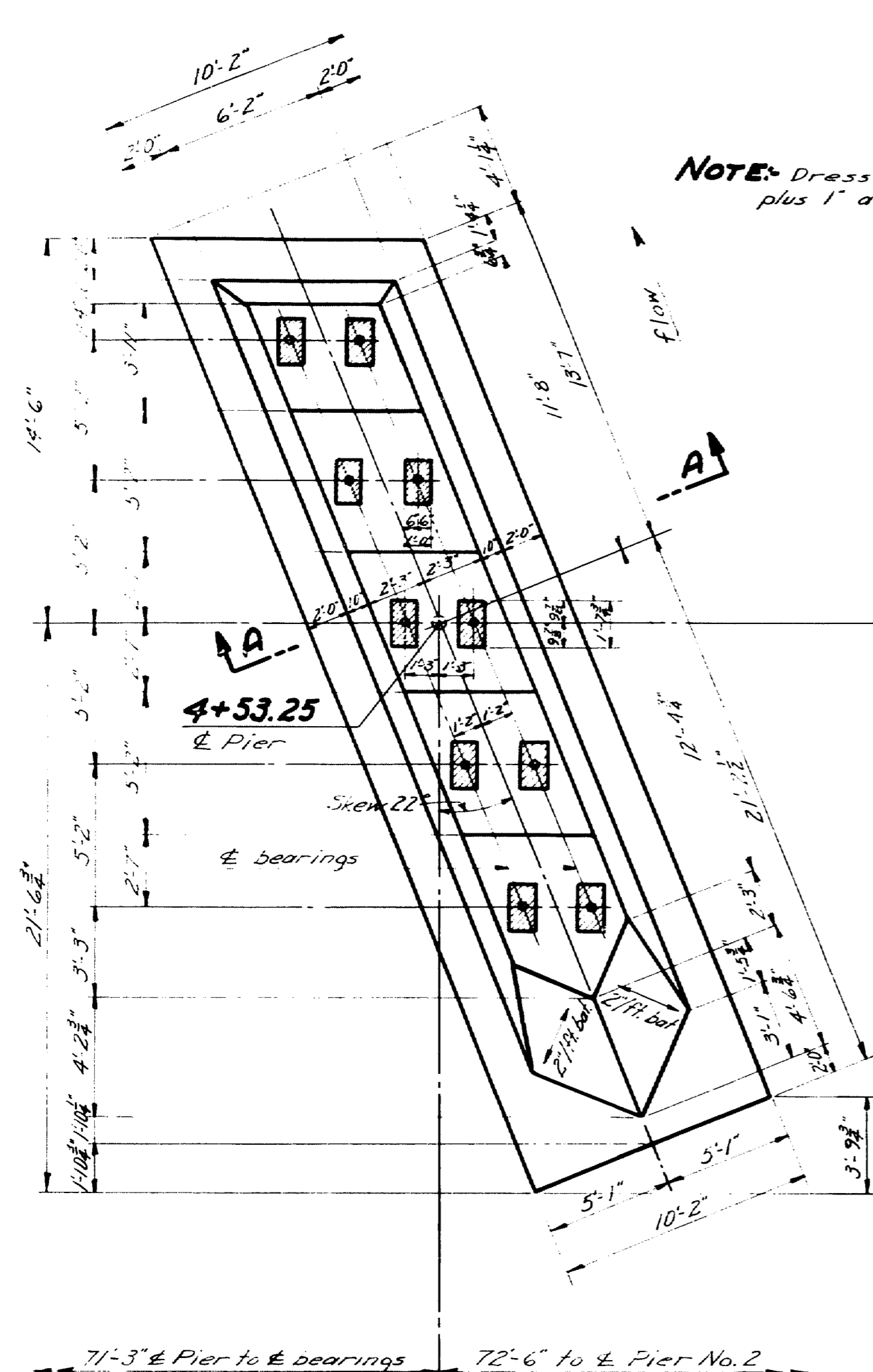


NOTE:- Dress shaded bearing areas plus 1" all around to exact elevations.
 See Sheet 7 for note about covering 1/2" slots between the superstructure and the substructure and the joint at the top of the backwall.

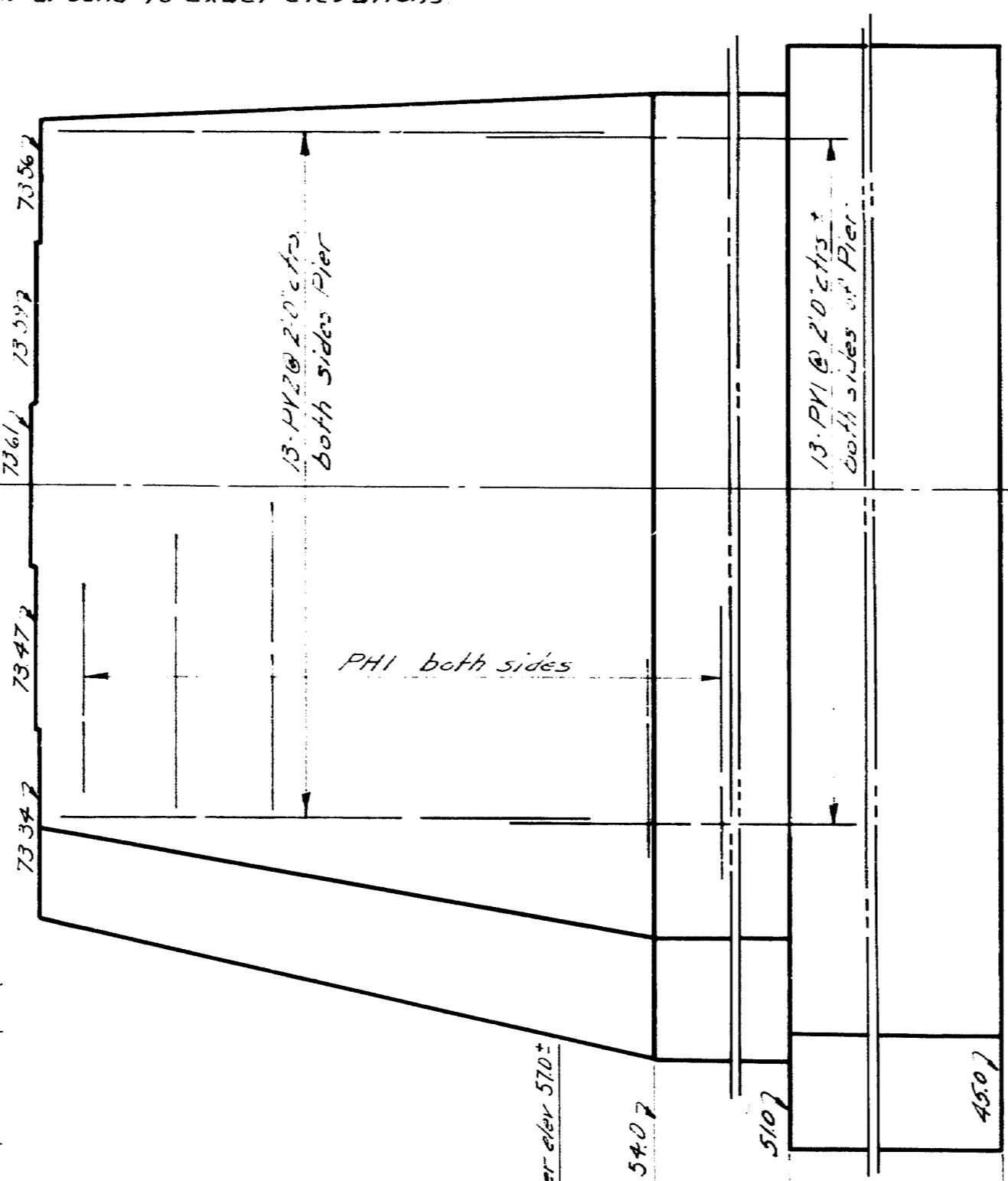


DESIGN - EVERETT	BRIDGE - 3901
TRACE - CLARK	
CHECK - CLARK	
STATE HIGHWAY COMMISSION BRIDGE DIVISION	
SOLDIER POND BRIDGE OVER FISH RIVER IN THE PLANTATION OF WALLAGRASS AROOSTOOK COUNTY	
ABUTMENT NO. 2	
SHEET 5 OF 9 AUGUSTA, MAINE SEPTEMBER, 1946	

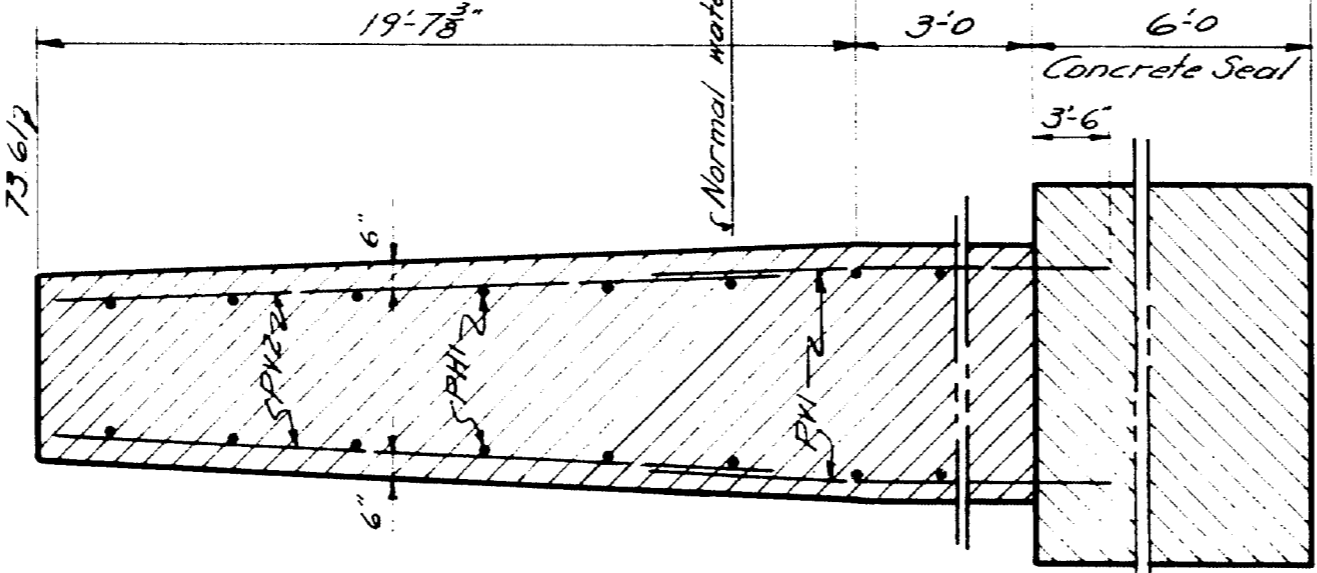




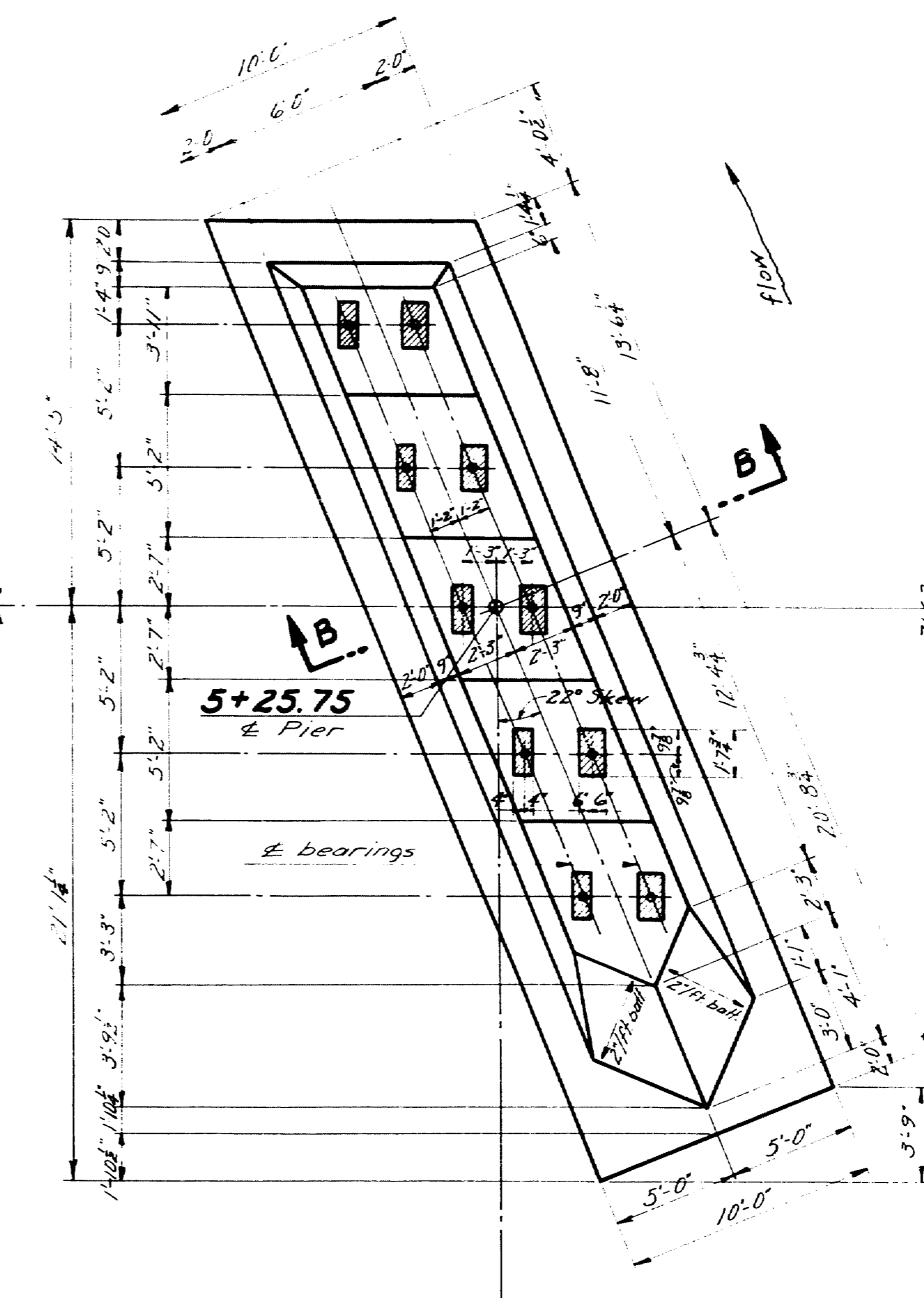
PLAN-PIER No. 1



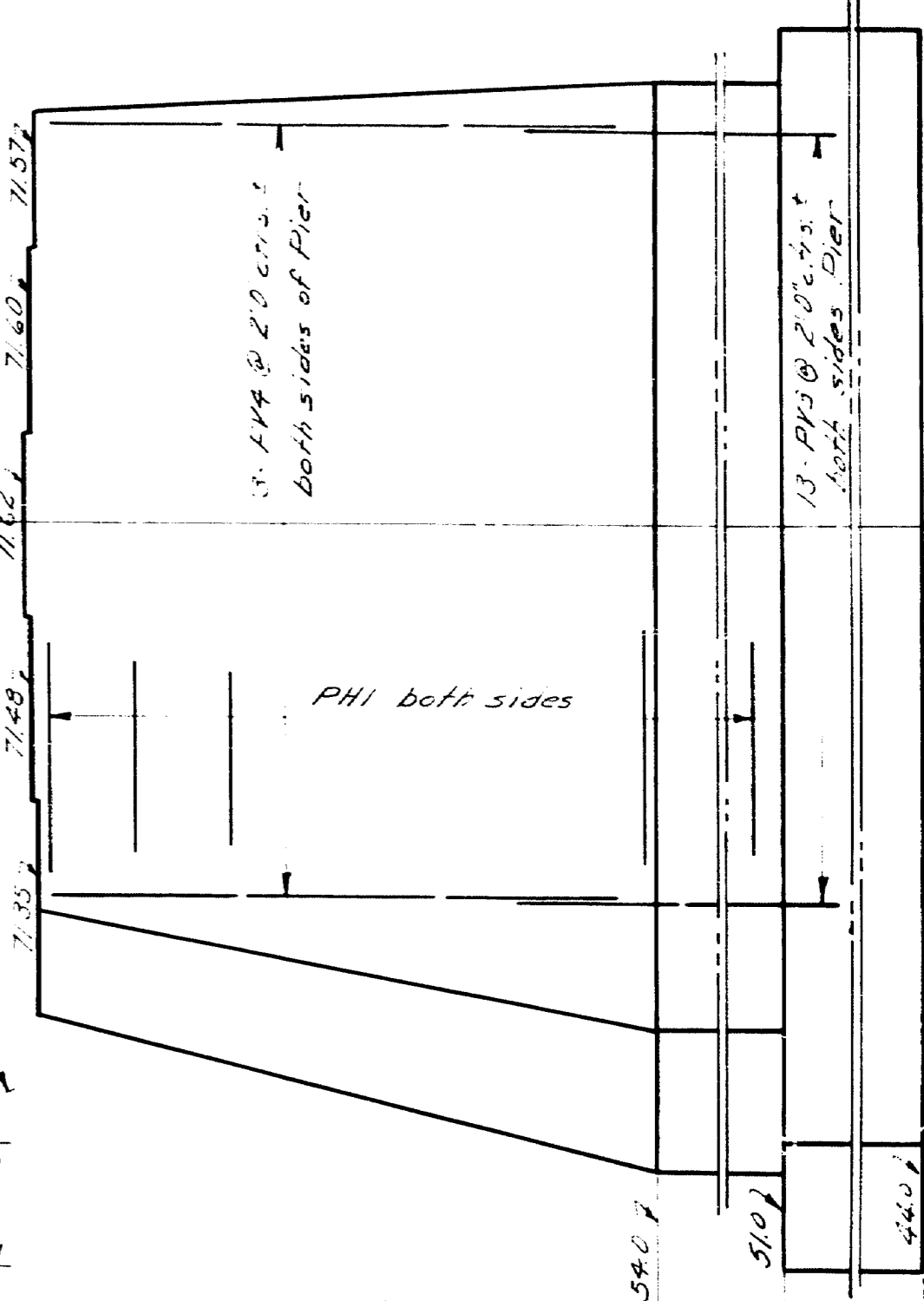
SIDE ELEV. PIER No. 1



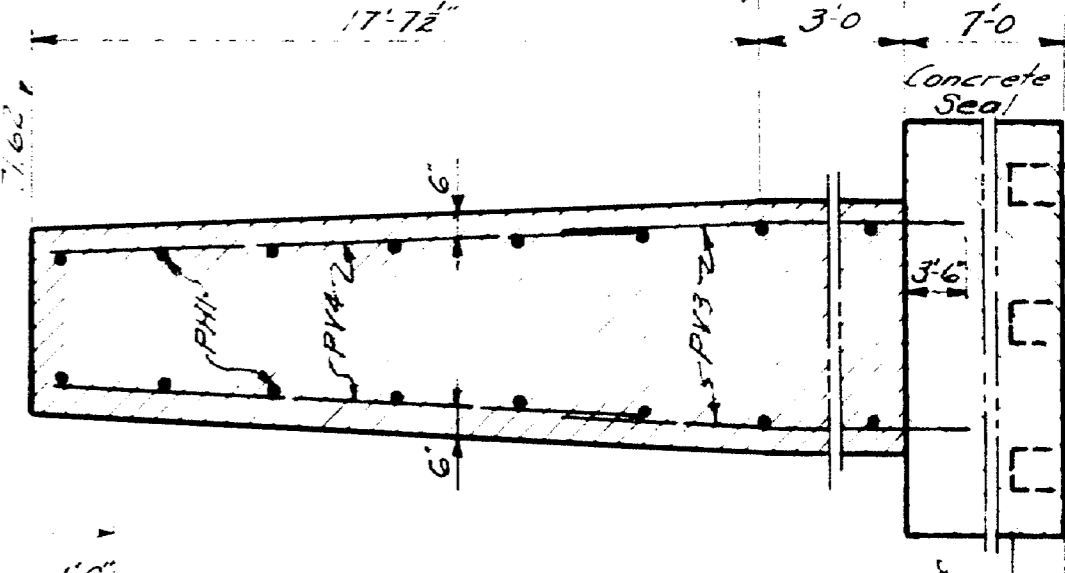
SECT. AA



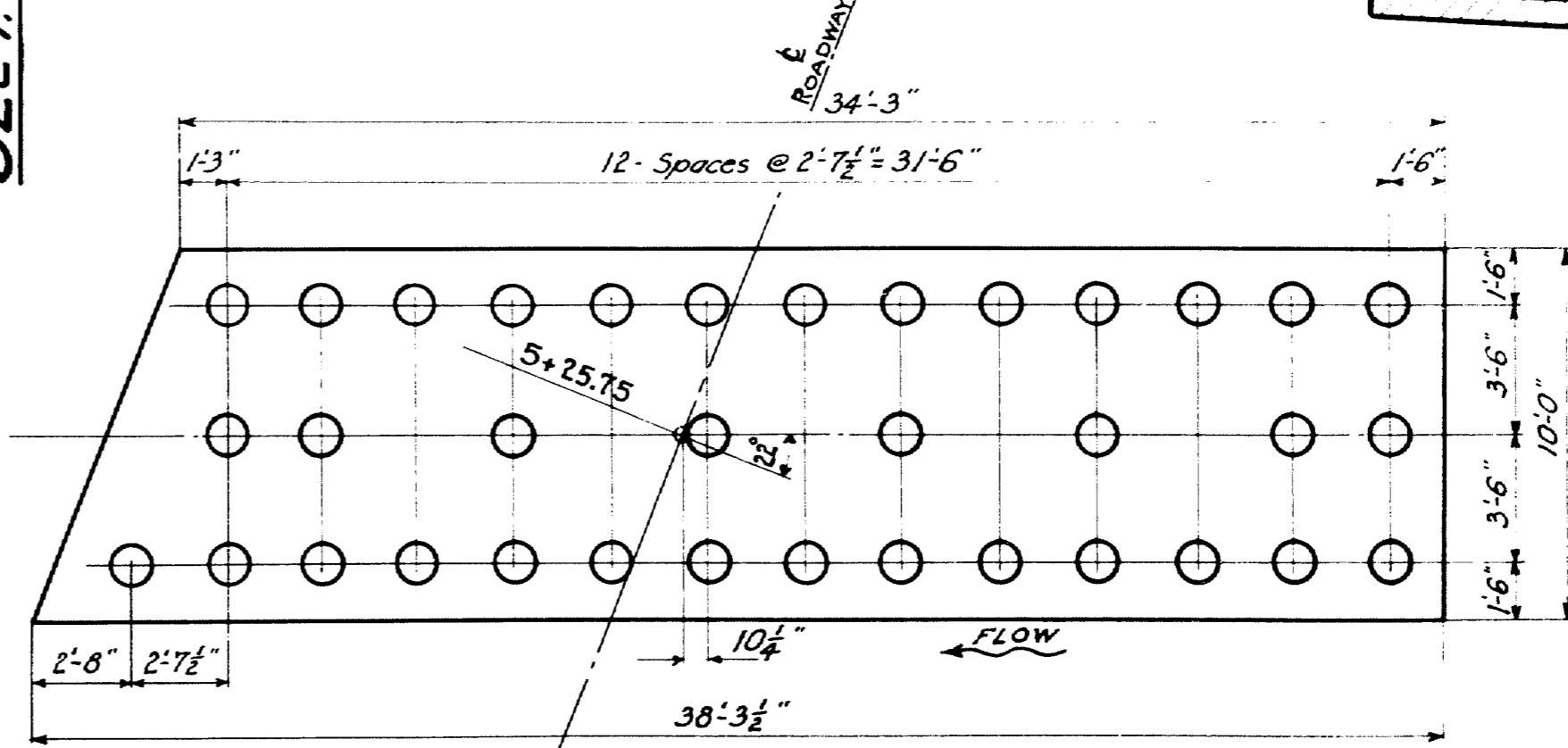
PLAN-PIER No. 2



SIDE ELEV. PIER No. 2



SECT. B-B

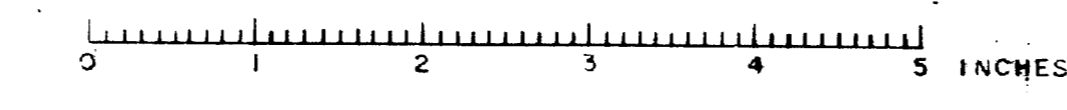


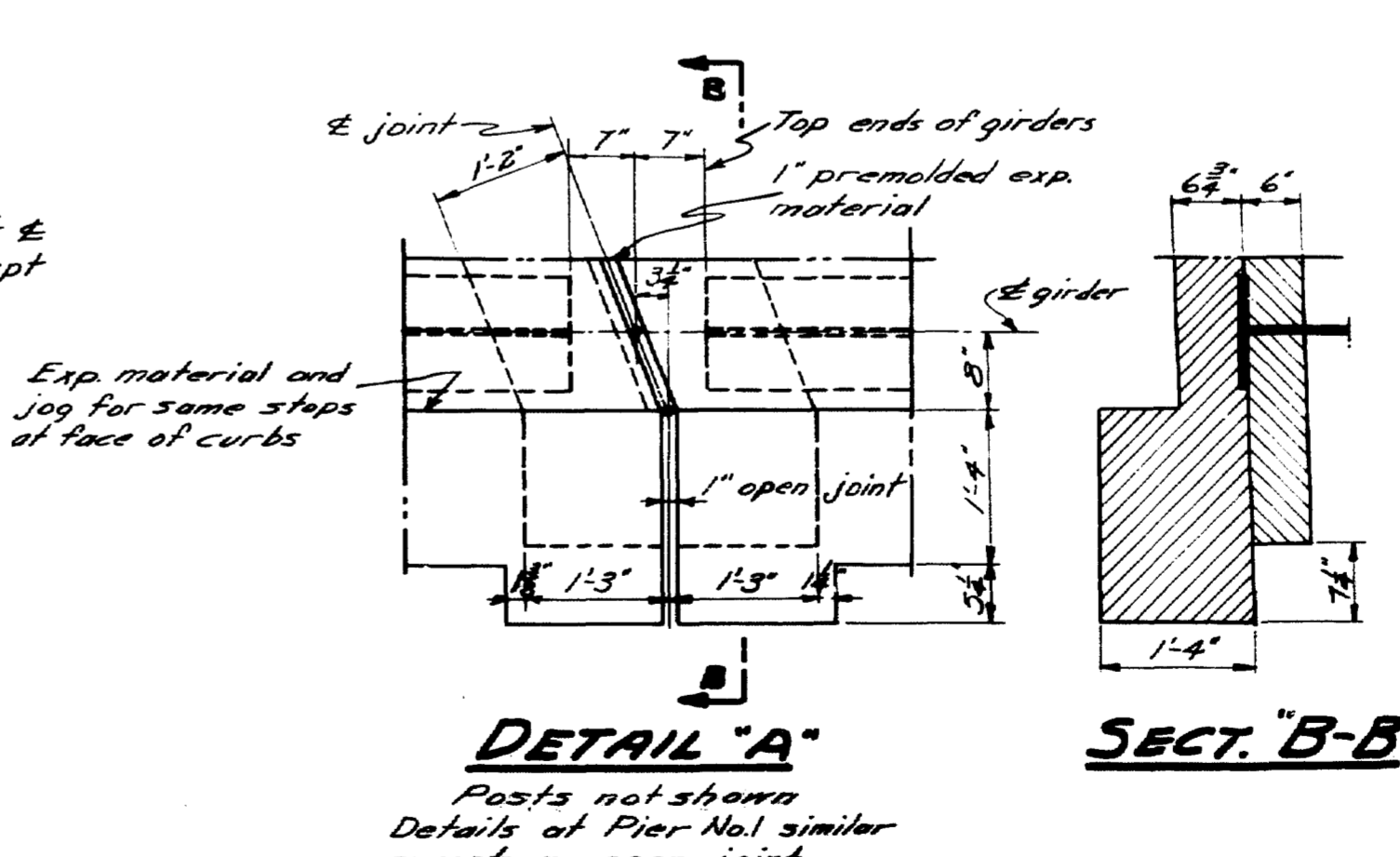
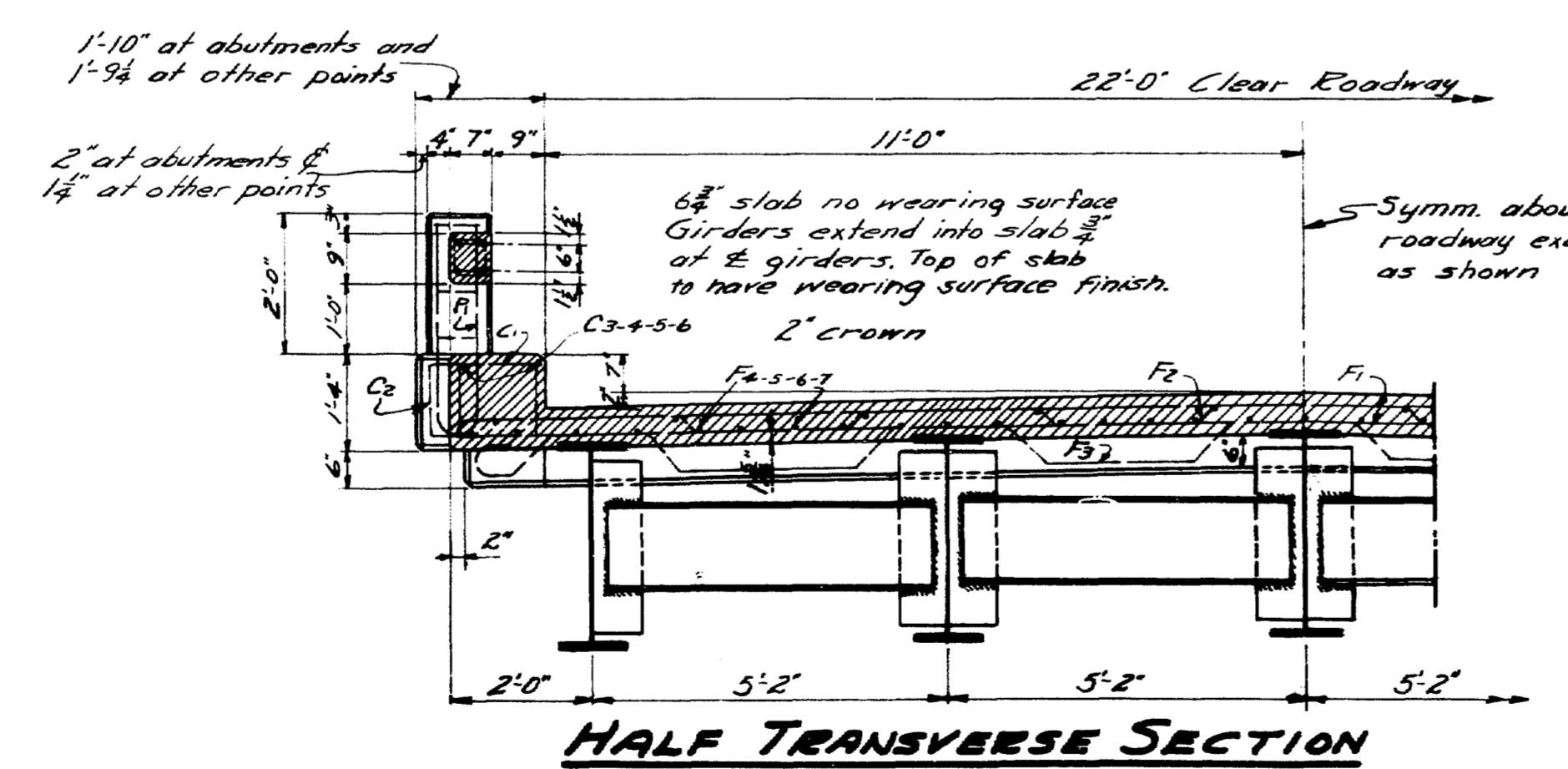
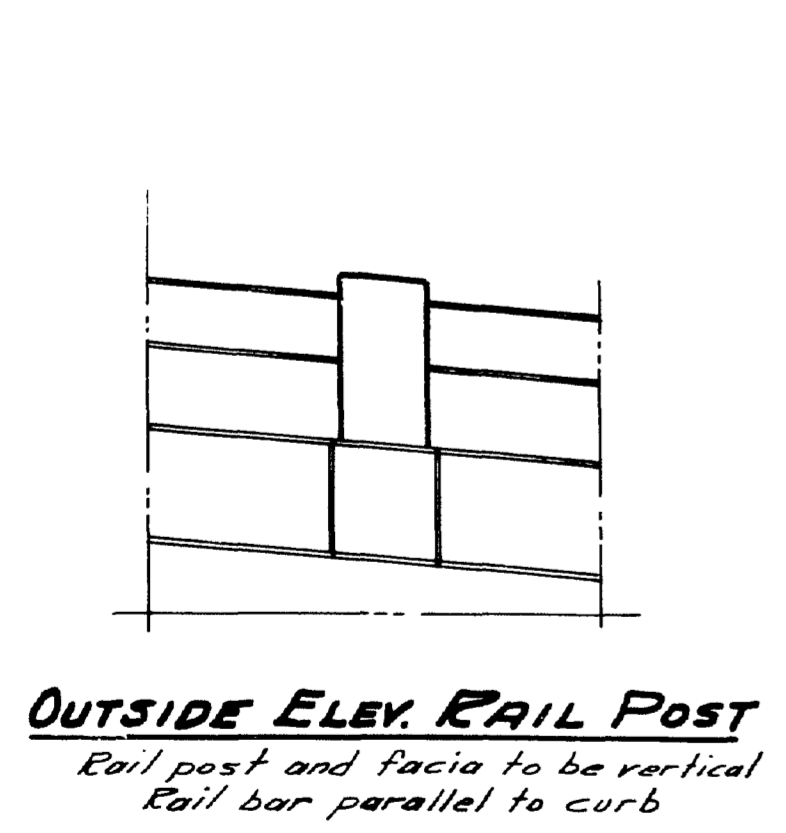
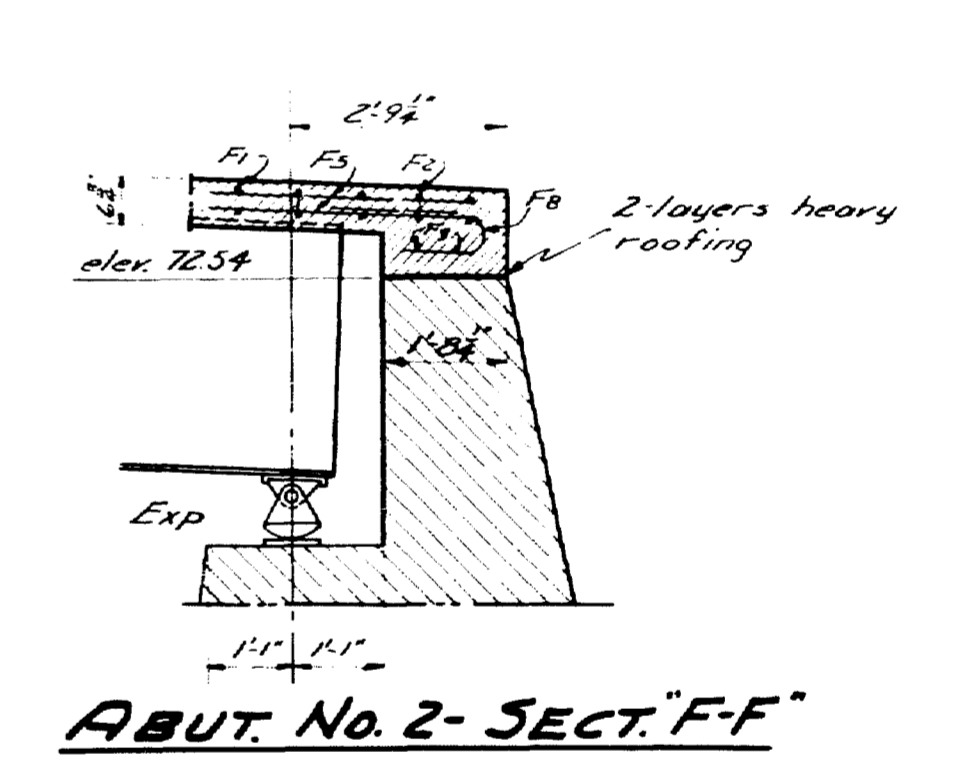
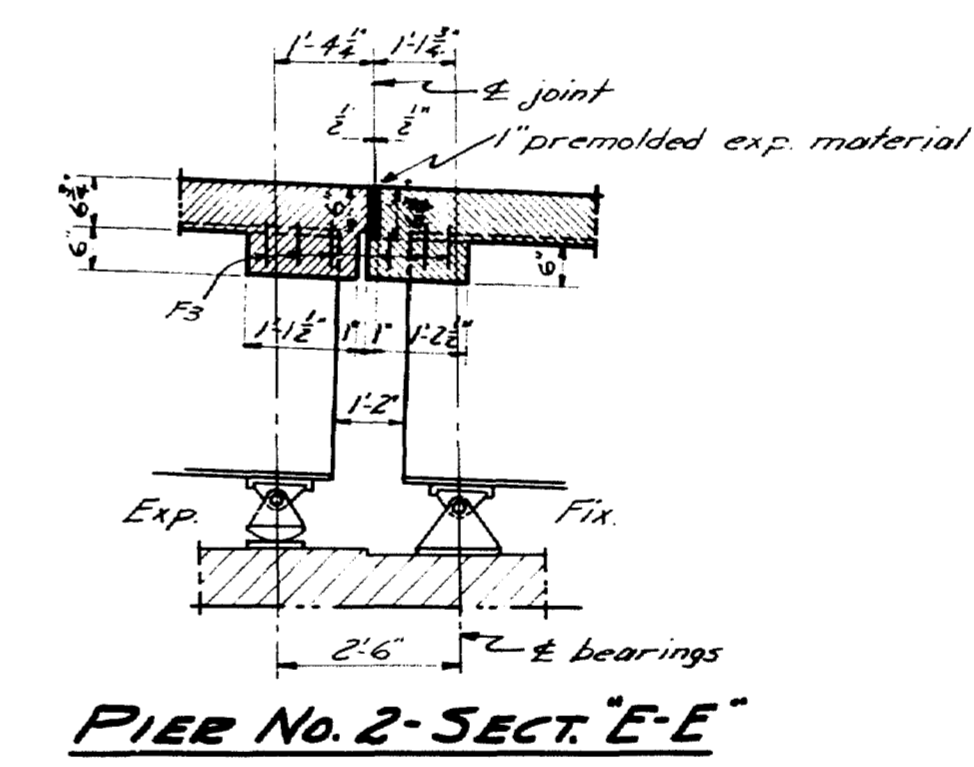
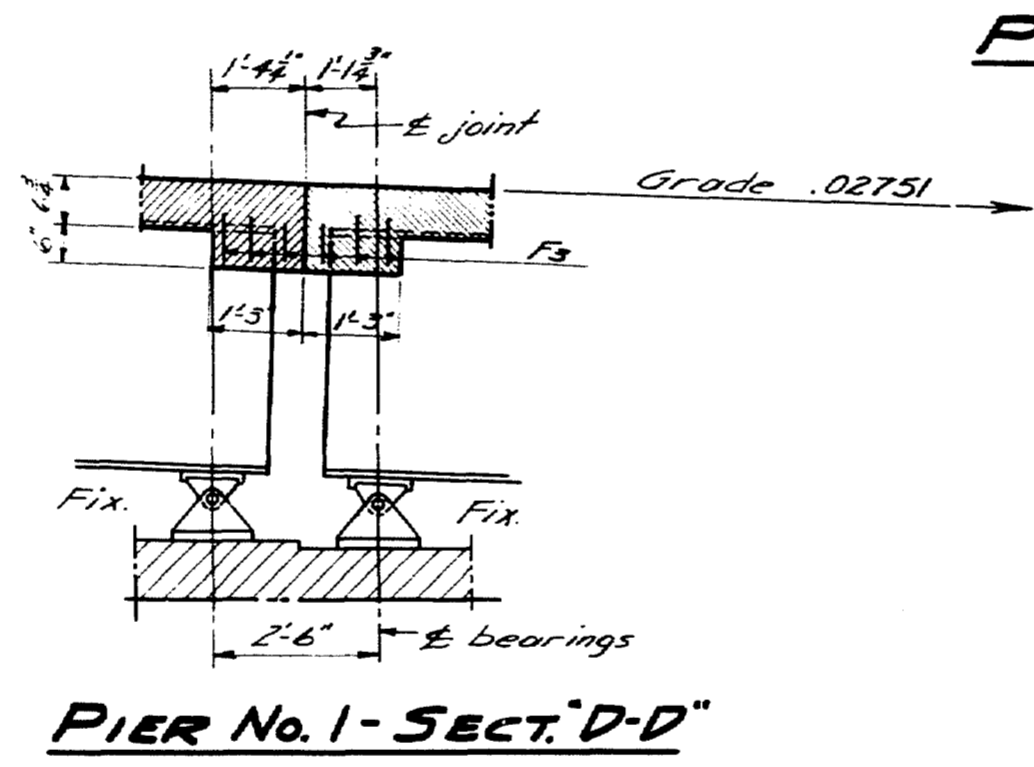
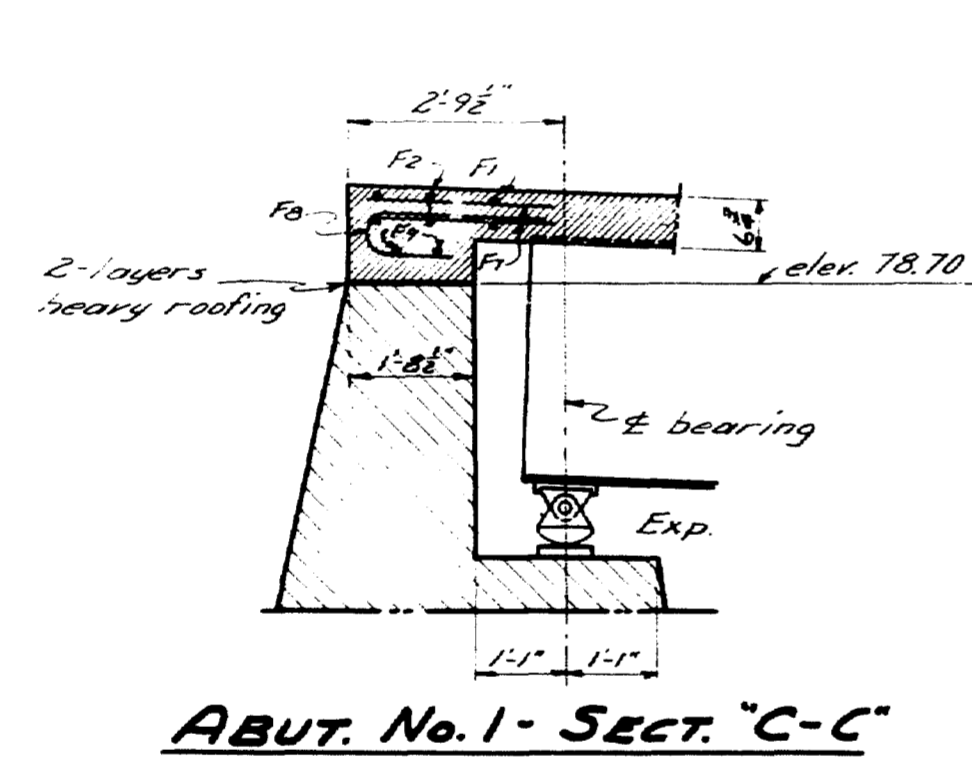
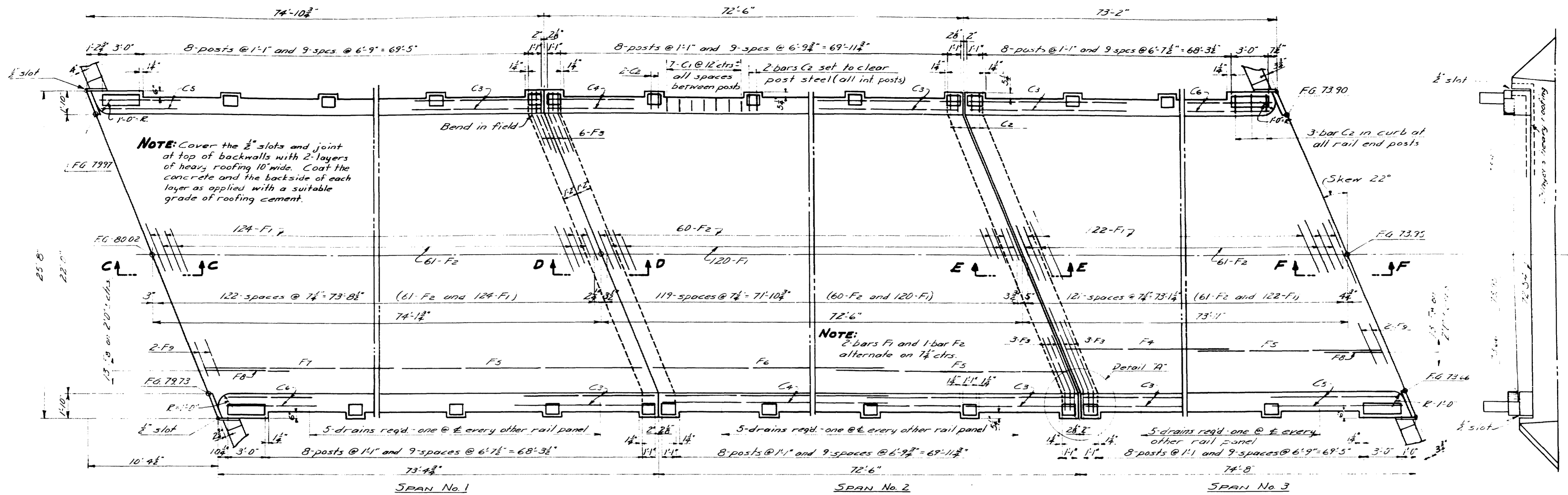
PILE PLAN-PIER No. 2. 35 Piles required
18 Tons = Pile Load

DESIGN - EVERETT	BRIDGE - 3901
TRACE - CLARK	
CHECK - [Signature]	
STATE HIGHWAY COMMISSION BRIDGE DIVISION	
SOLDIER POND BRIDGE	
OVER	
FISH RIVER	
IN THE PLANTATION OF	
WALLAGRASS	
AROSTOOK COUNTY	
PIERS NO. 1 & 2	
SHEET 6 OF 9 AUGUSTA, MAINE SEPTEMBER, 1946	

Revised - Piles for Pier No. 2. *Hamlin August, 1946.*

46-123

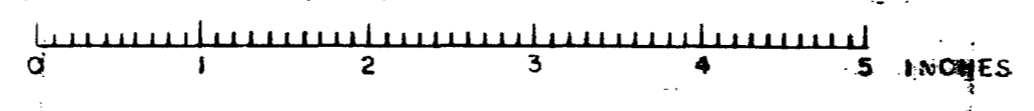




DESIGN DATA

Loading H15-44
Fs = 18,000 psi
Fc = 1,000 psi
n = 10

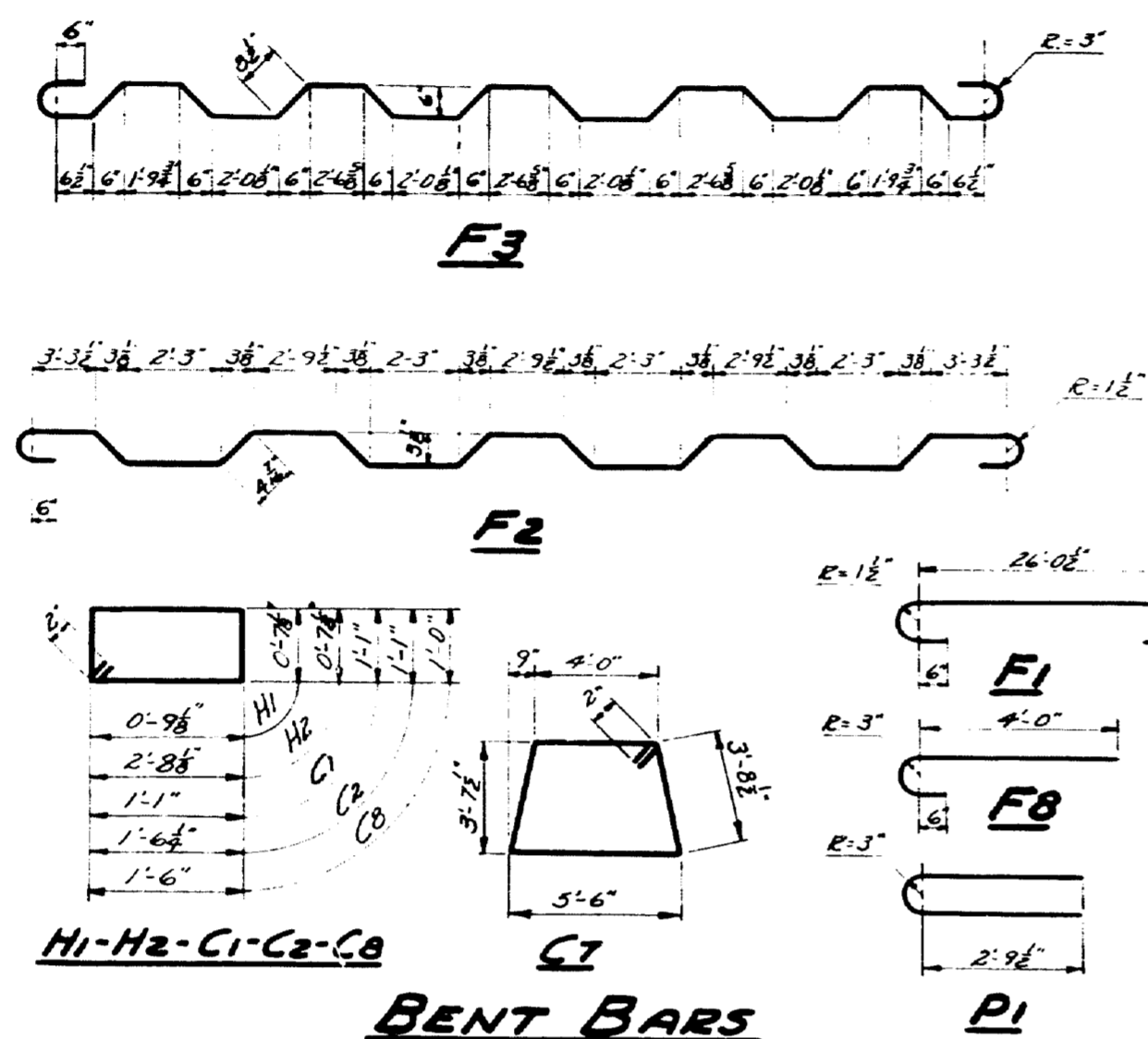
DESIGN - EVERETT	BRIDGE - 3901
TRACE - CLARK	
CHECK - [Signature]	
STATE HIGHWAY COMMISSION BRIDGE DIVISION	
SOLDIER POND BRIDGE OVER	
FISH RIVER IN THE PLANTATION OF	
WALLGRASS AROSTOOK COUNTY	
"SUPERSTRUCTURE"	
SHEET 7 OF 9 AUGUSTA, MAINE SEPTEMBER, 1946	



REAR ELEV.

4617

-REINFORCING STEEL SCHEDULE-

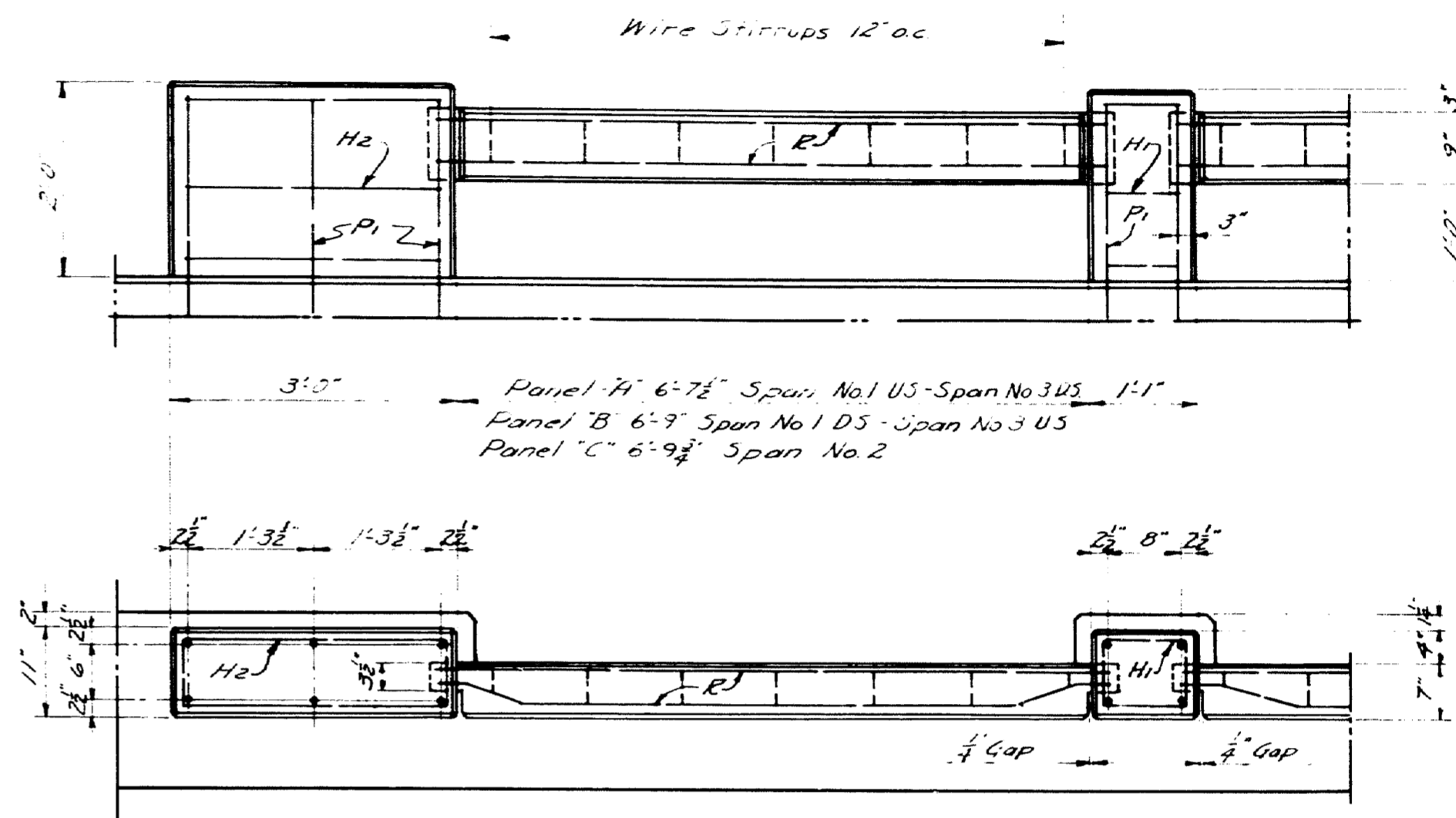


BENT BARS

Dimensions to center of bars

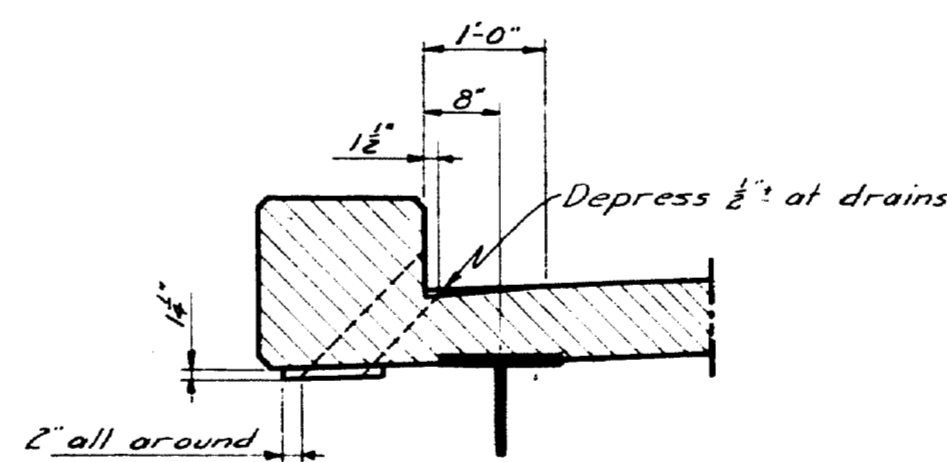
Mark	Size	No.	Length	Remarks	Mark	Size	No.	Length	Remarks
F1	3/8"	366	27'-10"	Slab	C1	3/8"	378	4'-8"	Curbs
F2	3/8"	182	28'-8"	Slab	C2	3/8"	124	5'-6 1/2"	" at posts
F3	3/8"	12	30'-0 1/2"	End slab at Piers	C3	3/8"	12	37'-10"	Curbs
F4	1/2"	43	37'-9"	Slab	C4	1/2"	4	36'-4"	"
F5	1/2"	129	37'-10"	Slab	C5	1/2"	4	38'-6"	"
F6	1/2"	43	36'-4"	"	C6	1/2"	4	37'-2"	"
F7	1/2"	43	38'-0"	"	C7	1/2"	36	17'-3"	Abutments
F8	3/8"	26	5'-3"	" backwalls	C8	3/8"	54	5'-4"	"
F9	3/8"	4	27'-3"	"					
A1	3/8"	18	5'-0"	Abutment #1	W1	1/2"	40	6'-6"	Abut #1 & #2
A2	3/8"	18	6'-0"	"	W2	3/8"	16	7'-6"	" " "
A3	3/8"	15	26'-0"	"	W3	3/8"	4	8'-1"	Abut #1
A4	3/8"	6	27'-6"	"	W4	3/8"	4	7'-1"	"
A5	3/8"	18	4'-10"	Abutment #2	W5	3/8"	4	6'-0"	"
A6	3/8"	15	26'-0"	"	W6	3/8"	4	5'-2"	"
A7	3/8"	6	27'-6"	"	W7	3/8"	4	4'-3"	"
A8	3/8"	18	5'-10"	"	W8	3/8"	4	8'-3"	Abut #2
					W9	3/8"	4	7'-2"	"
					W10	3/8"	4	6'-2"	"
					W11	3/8"	4	5'-2"	"
					W12	3/8"	4	4'-3"	"
PI1	3/8"	26	13'-6"	Pier #1					
PI2	3/8"	26	15'-6"	"					
PI3	3/8"	26	12'-6"	Pier #2					
PI4	3/8"	26	14'-6"	"					
PI1	1/2"	32	24'-0"	Piers #1 & #2					
P1	3/8"	124	6'-4"	Rail posts	H1	3/8"	168	3'-0 1/2"	Int rail posts
					H2	3/8"	12	6'-10 1/2"	End rail posts
R1	1/2"	72	7'-0"	Panel "A"					
R2	1/2"	72	7'-2"	" "B"					
R3	1/2"	72	7'-3"	" "C"					

NOTE-Wire Stirrups to be constructed in the field from a single strand of #9 annealed wire. In forming stirrups make a complete turn around each reinforcing bar.



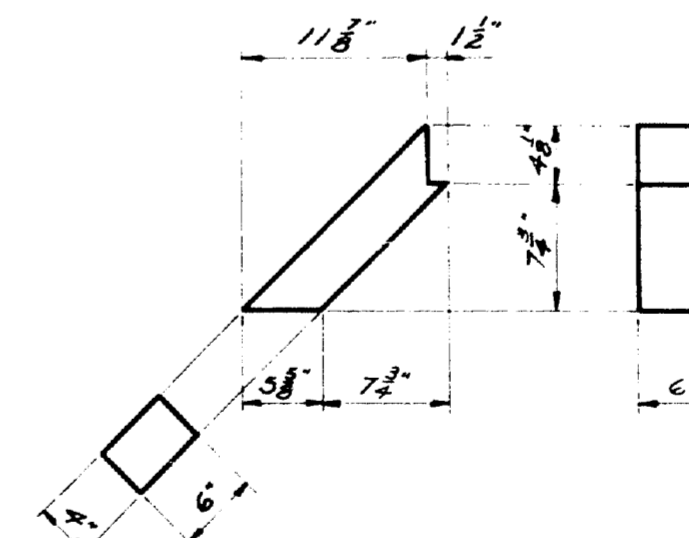
RAIL DETAILS

Curb to be cast with slab. Steel for posts to be set in position before curb is placed. Precast rail bar and set in position with ends projecting 3" into post forms. Wrap the tongue ends with two layers of heavy roofing. Build forms and cast posts. All exposed edges of concrete to be chamfered 1/2" unless otherwise indicated. Posts to be vertical. Rail bars parallel to curb.
For additional rail details see Superstructure.



DRAIN LOCATION

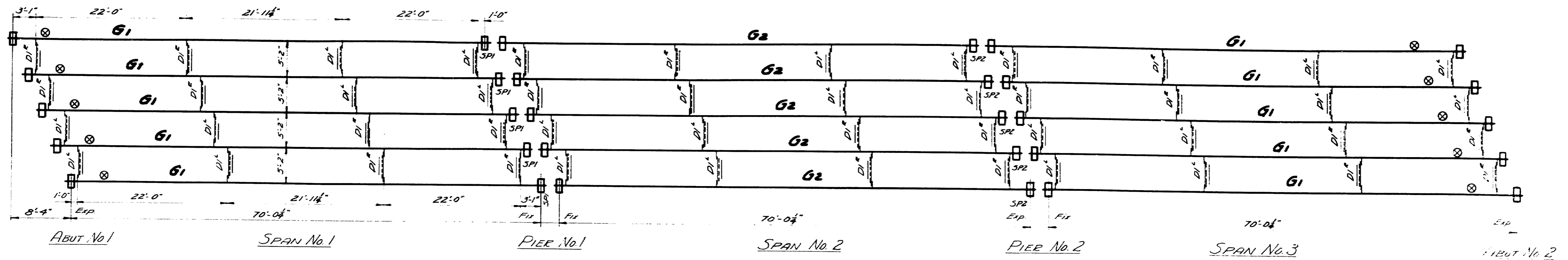
Spacing same for both curbs
Reqd. 15 for each curb



DRAIN DETAIL

Drains to be #24 gage galvanized iron
Required - 30

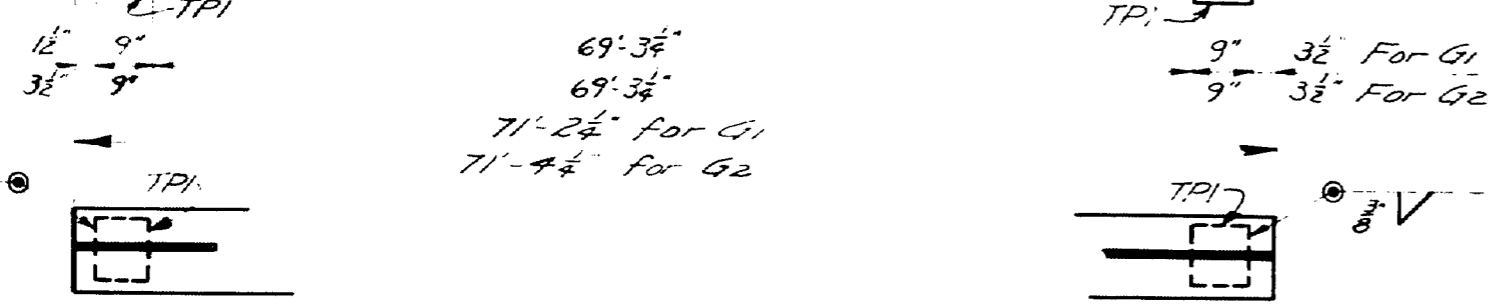
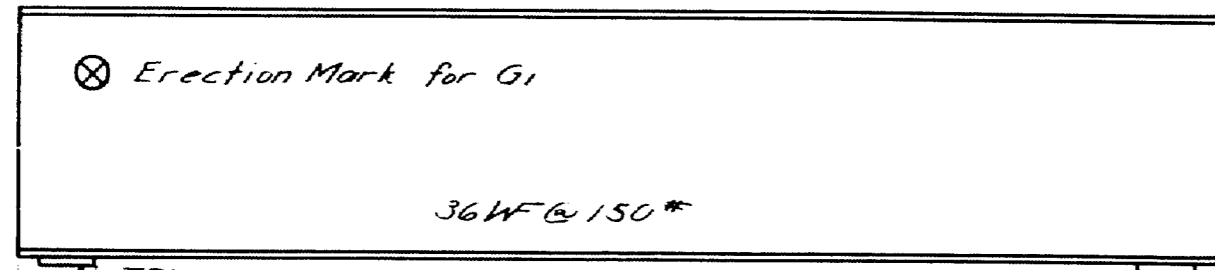
DESIGN - EVERETT TRACE - CLARK CHECK - <i>clb</i>	BRIDGE - 3901
STATE HIGHWAY COMMISSION BRIDGE DIVISION	
SOLDIER POND BRIDGE OVER FISH RIVER IN THE PLANTATION OF WALLAGRASS AROOSTOOK COUNTY "RAIL & REINFORCING STEEL"	
SHEET 8 OF 9 AUGUSTA MAINE SEPTEMBER 1946	



ERECTOR DIAGRAM

Required for each Bearing:
 -Fixed- -Expansion-

- | | |
|-------|-------|
| 1-FR1 | 1-ER1 |
| 1-TPI | 1-TPI |
| 1-PNI | 1-MPI |
| 1-ABI | 1-PNI |
| 4-AB2 | 2-AB1 |



GIRDERS G1-G2

Required- 10 G1 & 5 G2

ANCHOR BOLT ABI-AB2

Req'd- 30 ABI-60 AB2

TOP PLATE-TPI

30-Req'd.

PIN-PNI

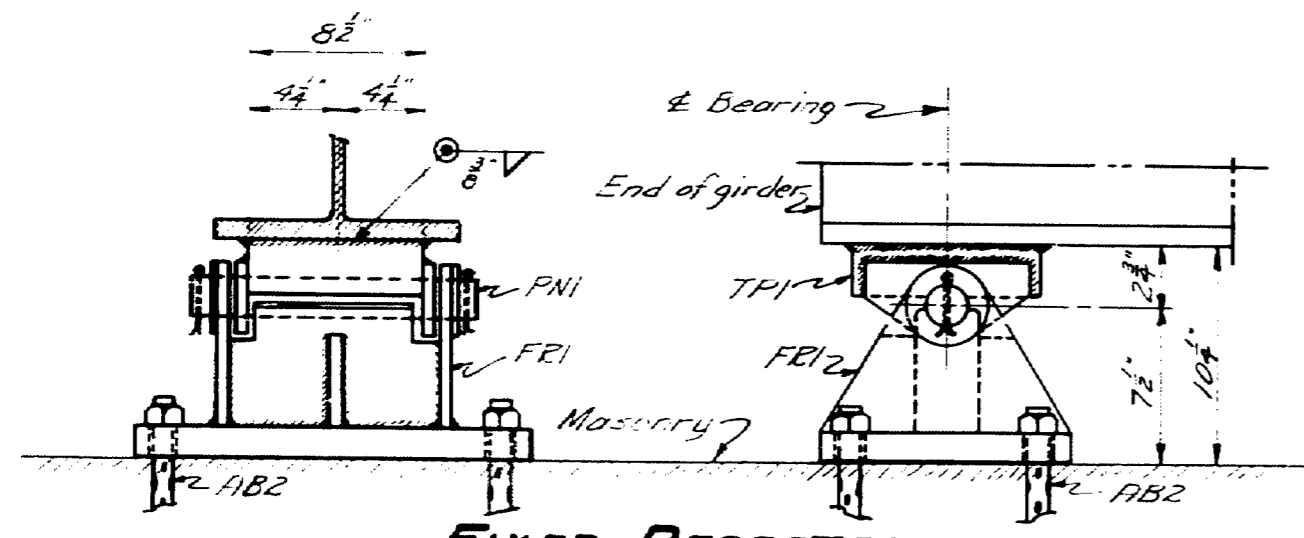
Req'd-30

FIELD ASSEMBLY

DI to Girders

DIAPHRAGM

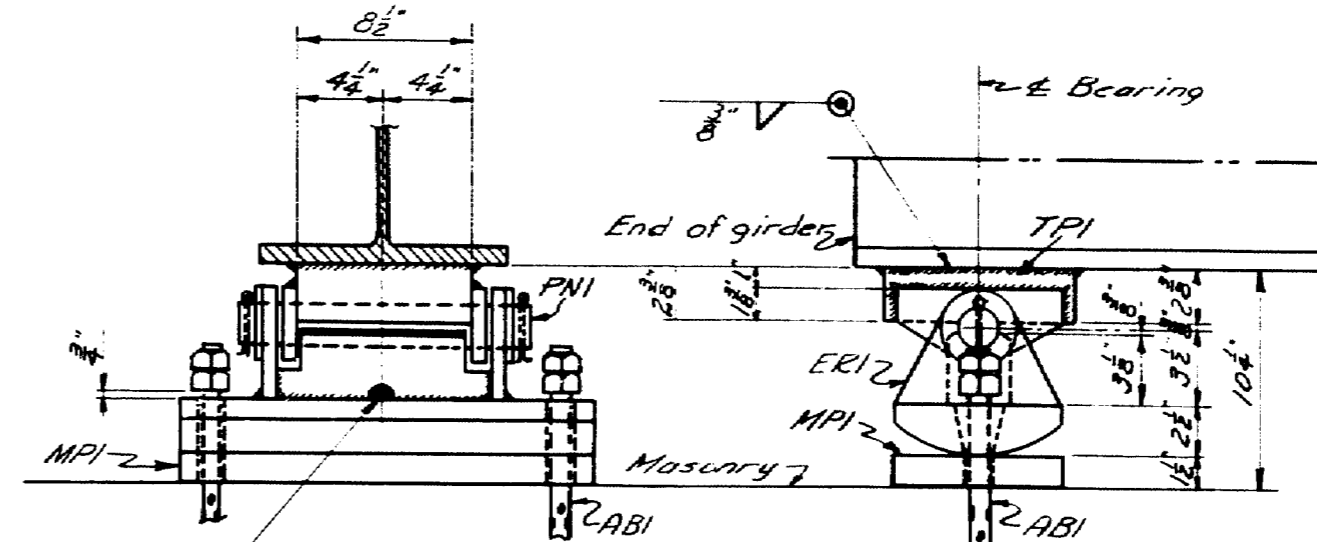
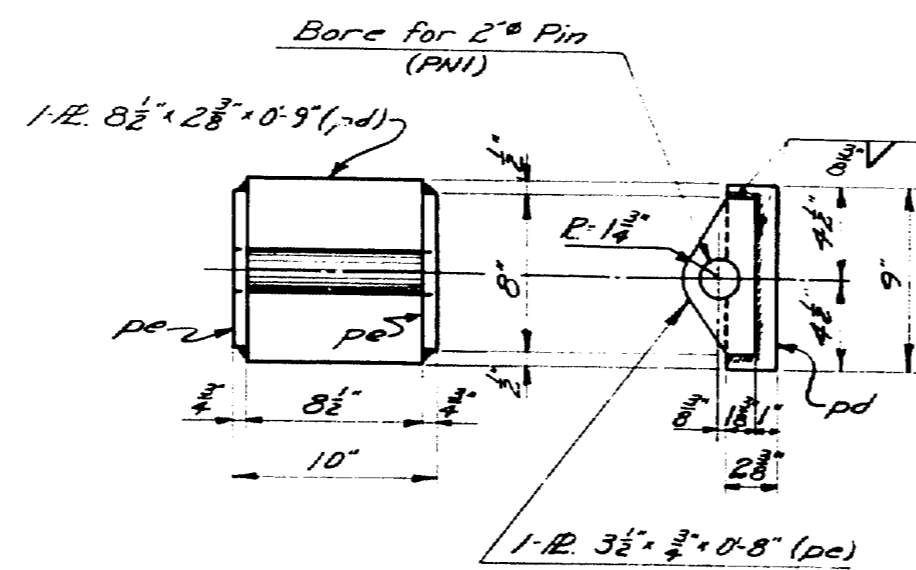
DI^R as shown - DI^L opp hand
 Required- 24 DI^R & 24 DI^L



FIXED PEDESTAL

Assembly

NOTE: All welds $\frac{3}{8}$ Fillet



EXPANSION PEDESTAL

Assembly

MASONRY PLATE MPI

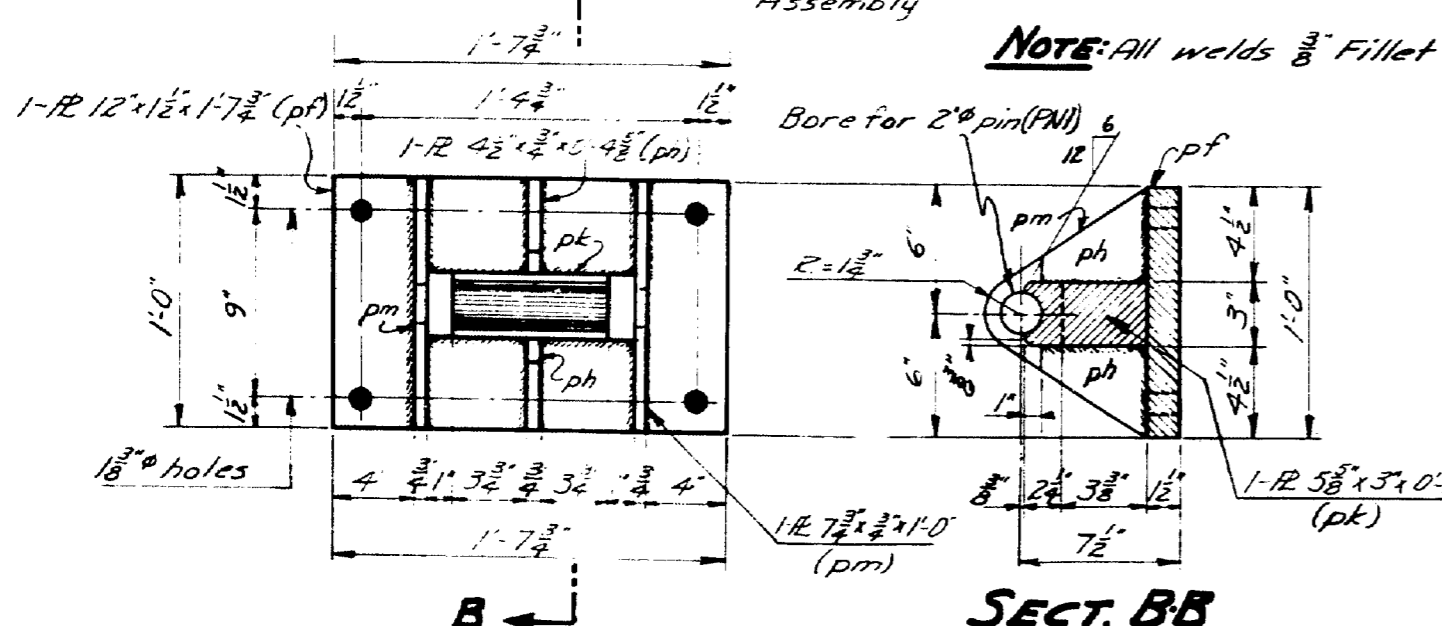
SHIM PLATE SP2

Req'd. 15 MPI & 5 SP2

NOTE: All welding shop, except DI and TPI to girders. No shop welding on girders.

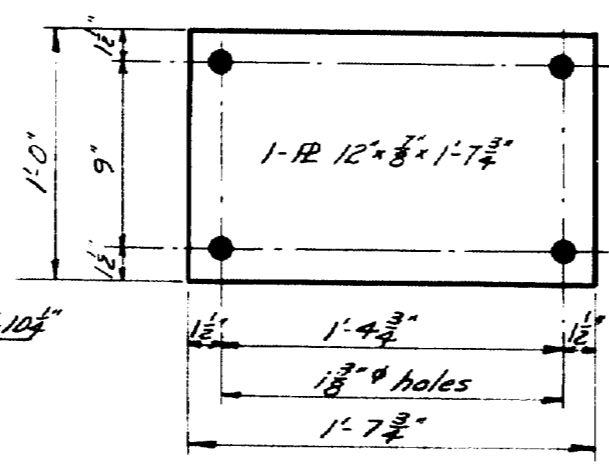
Material: Structural steel.

Specifications: Maine State Highway Commission Specifications for Steel Highway Bridges 1945.



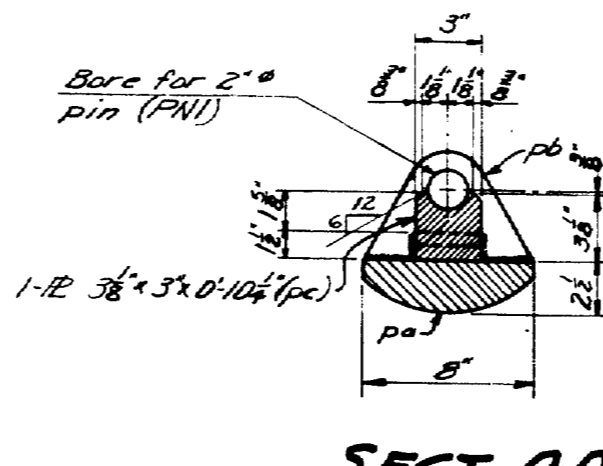
PEDESTAL-FR1

15-Req'd.



SHIM PLATE-SPI

5-Req'd.



ROCKER-ER1

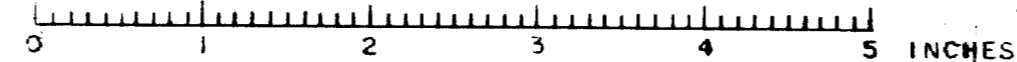
ROCKER-ER1

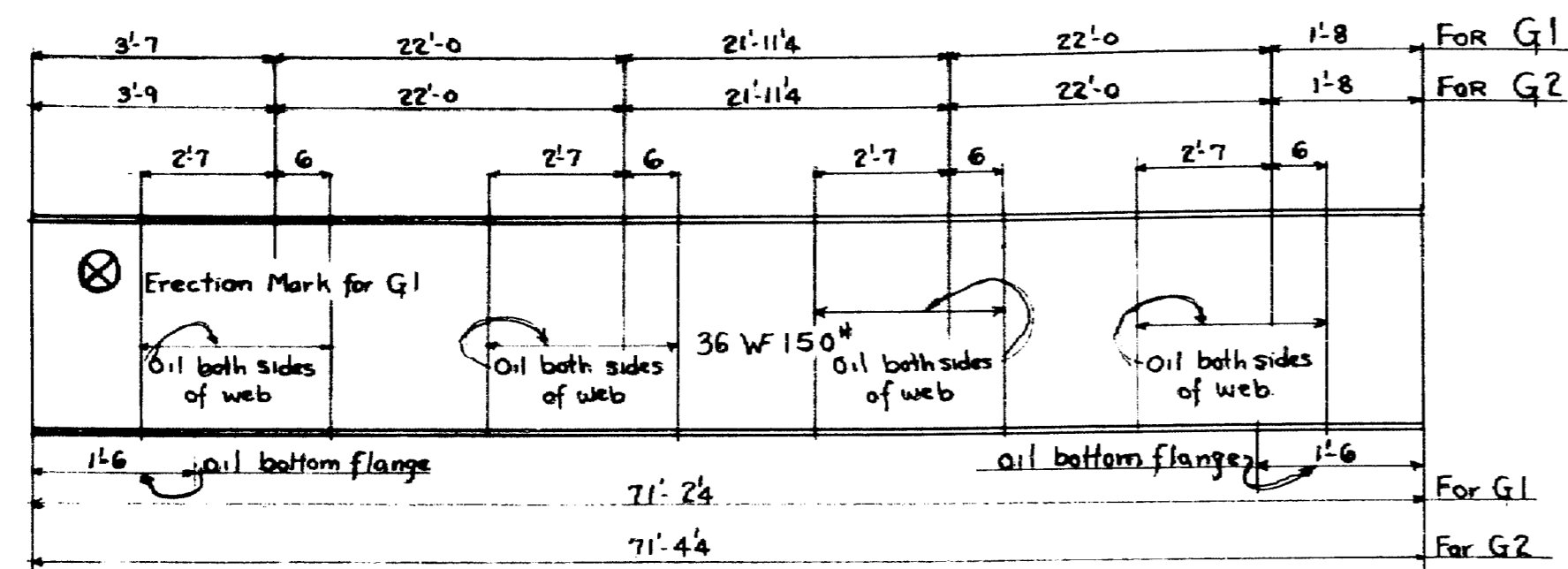
15-Req'd.

NOTE: All welds $\frac{3}{8}$ Fillet

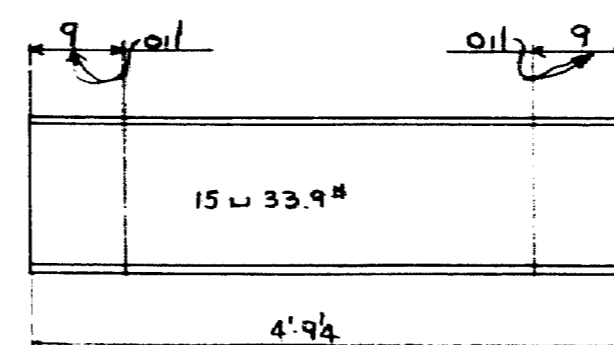
Revised- March, 1947- Welding Diaphragms - Hamilton

DESIGN - EVERETT	BRIDGE - 3901
TRACE - CLARK	
CHECK - [Signature]	
STATE HIGHWAY COMMISSION BRIDGE DIVISION	
SOLDIER POND BRIDGE OVER FISH RIVER IN THE PLANTATION OF WALLGRASS AROSTOOK COUNTY "STRUCTURAL STEEL"	
SHEET 9 OF 9 AUGUSTA, MAINE, SEPTEMBER 1944	

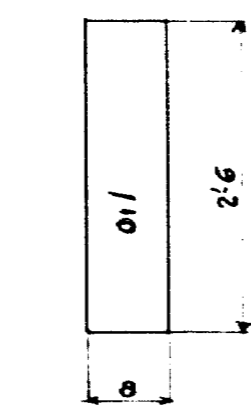




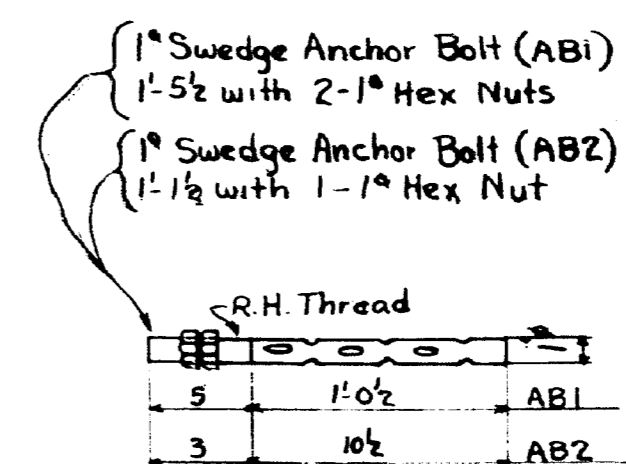
10 Girders - 36 W 150⁺ 71'-2 1/4⁺ Mk G1
 5 Girders - 36 W 150⁺ 71'-4 1/4⁺ Mk G2



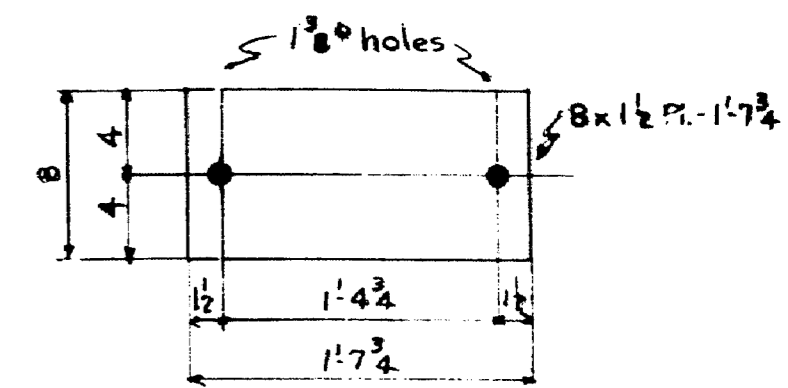
48 - 15 x 33.9⁺ 4'-9 1/4⁺ field making 48
 96 - 8 x 8⁺ PL 2'-6⁺ pa Diaphragms



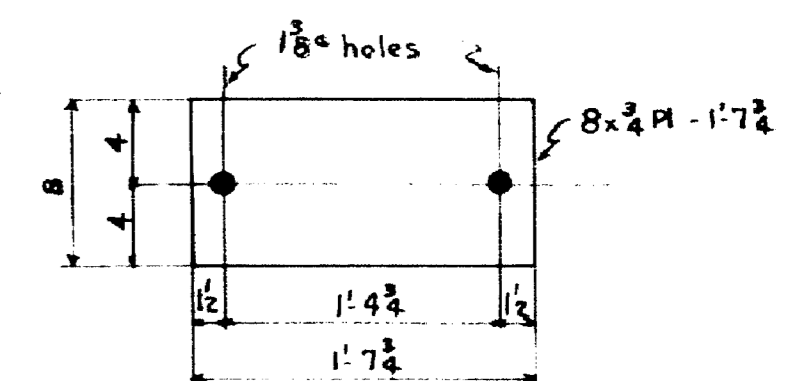
8 x 8 Plate - 2'-6 pa



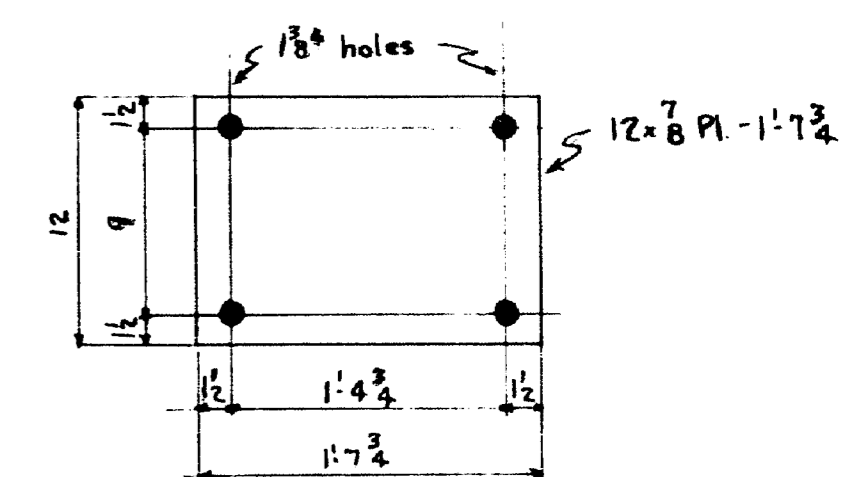
30 Anchor Bolts - Mk AB1
 60 Anchor Bolts - Mk AB2
 90 - 3 x 4 Wash 3/4" hole



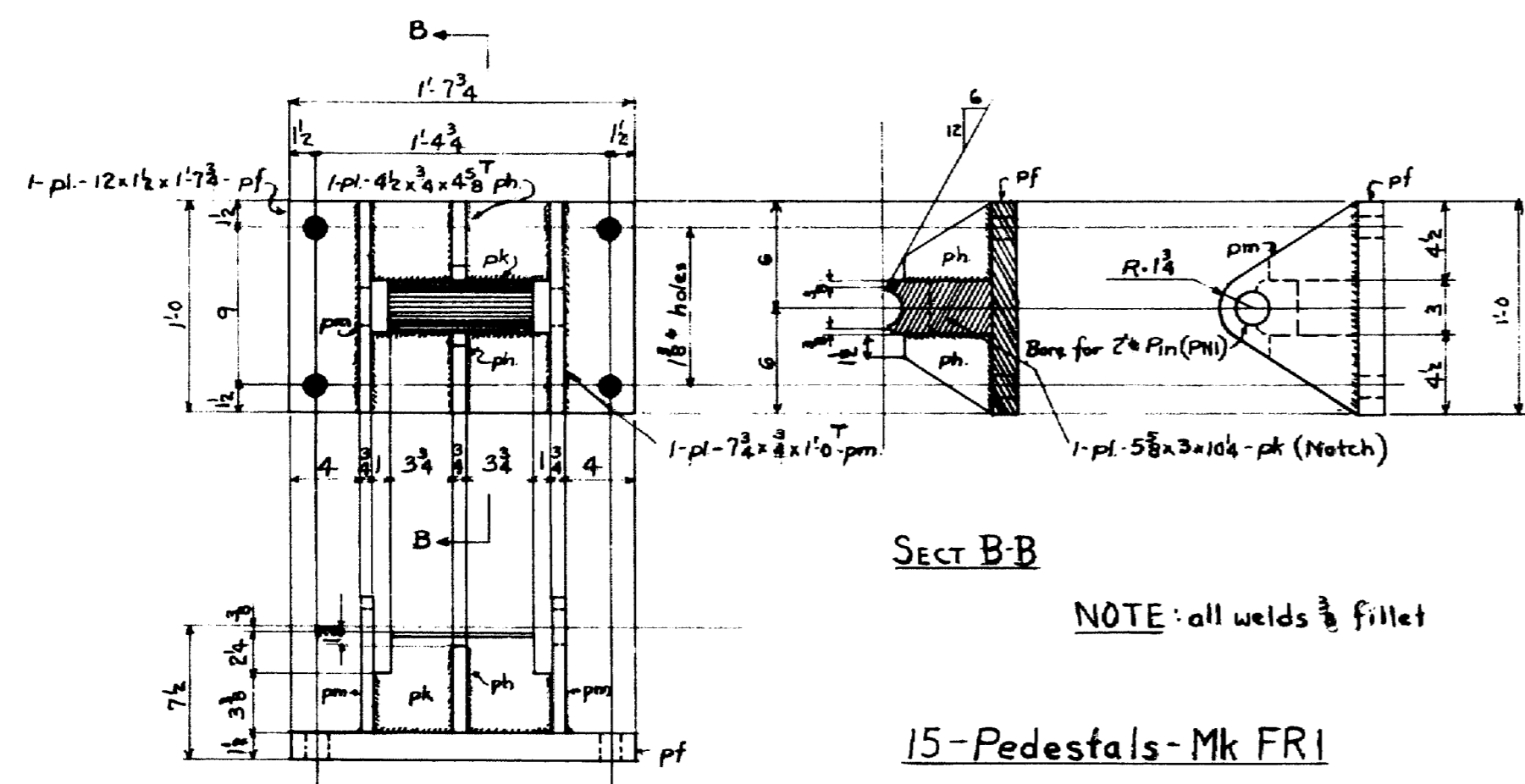
15 Masonry Plates Mk MPI



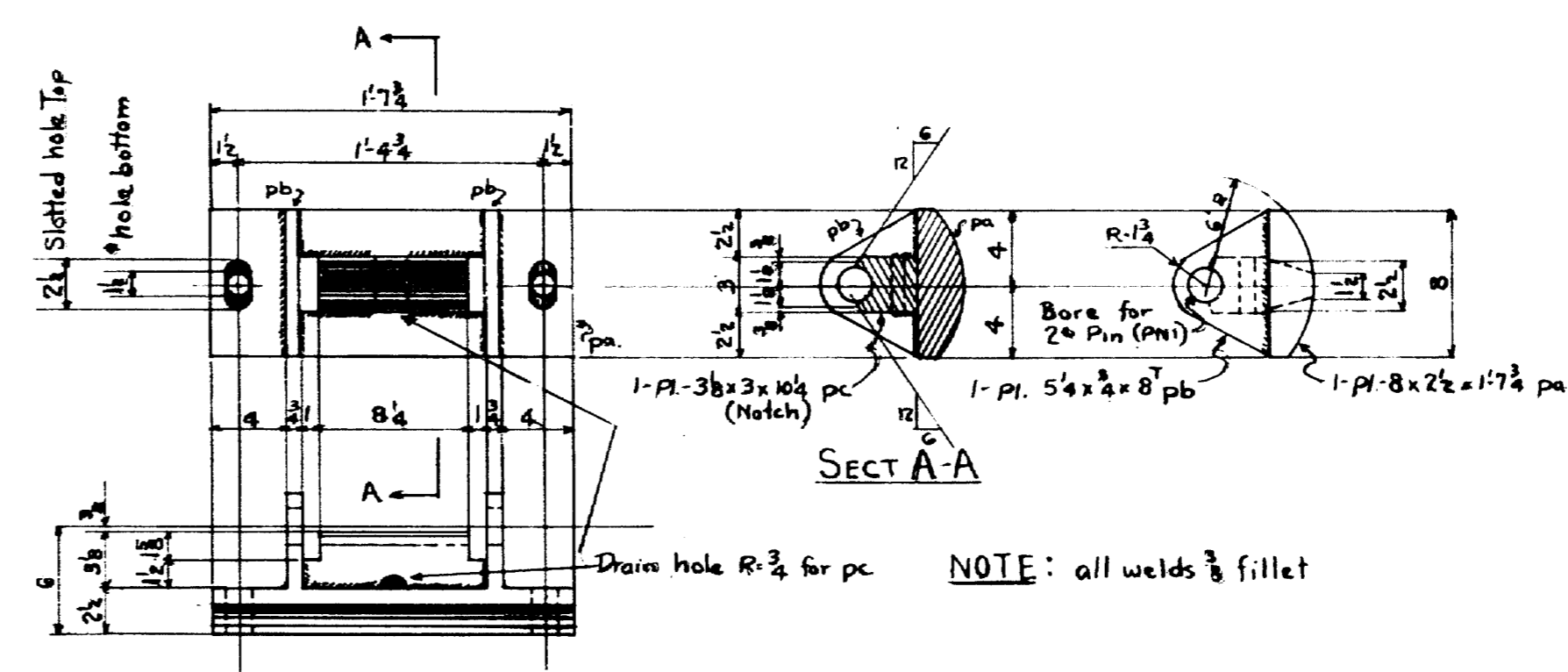
5 Shim Plates Mk SP2



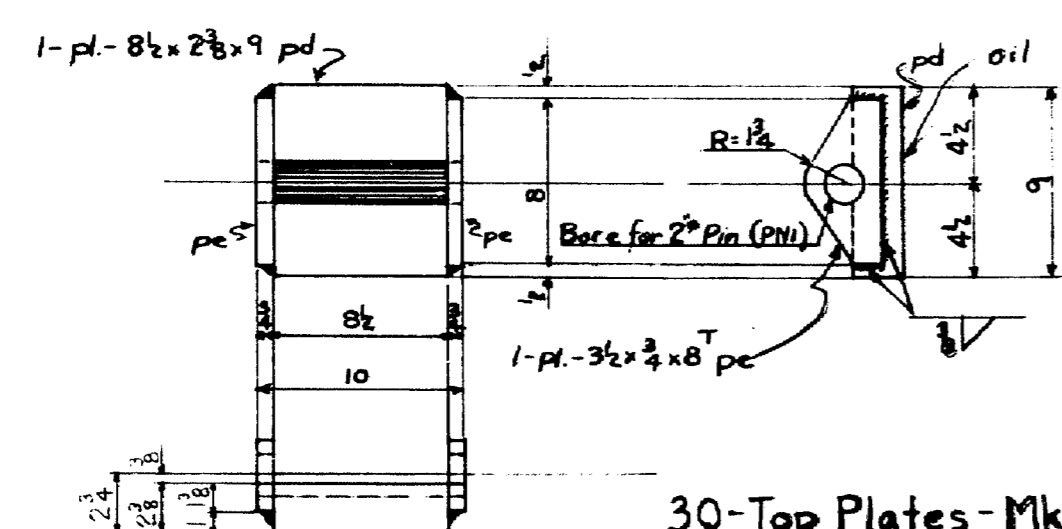
5 Shim Plates Mk SPI



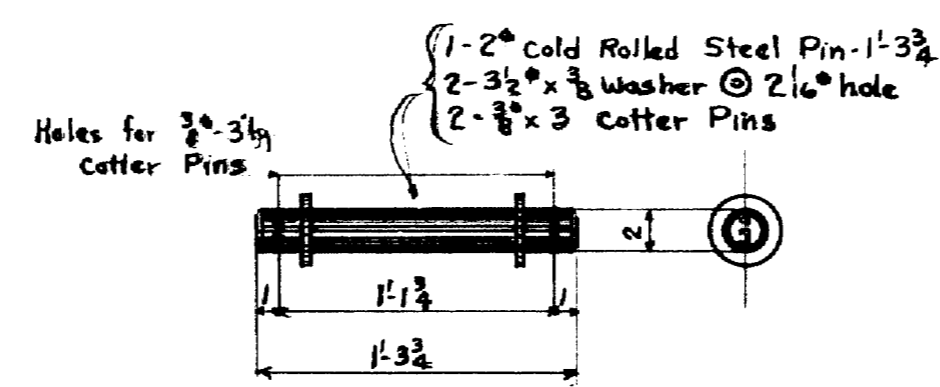
15 Pedestals - Mk FR1



15 Rockers - Mk ERI



30 Top Plates - Mk TPI



30 Pins - Mk PNI

Note: For erection plan, field assembling and field welding See Maine State Highway Commission Dwg 9 for Soldier Pond Bridge over Fish River

STATE HIGHWAY COMMISSION
 BRIDGE DIVISION
 SOLDIER POND BRIDGE
 OVER
 FISH RIVER
 IN THE PLANTATION OF
 WALLAGRASS AROOSTOOK COUNTY

Specifications: Structural Steel ASTM-A7-42
 Rivet Steel ASTM-A141-39
 Workmanship: Maine State Highway Commission Steel highway bridges 1945
 Open holes: As noted
 Shop Paint: One coat of red lead ready mixed paint Designation M-72-42 of the A.A.S.H.O. Specs for highway materials except for parts marked Baled Linseed Oil In charge of THE PHOENIX BRIDGE CO. on Dwg. Shop contact surfaces not painted Date 3/27/47

THE PHOENIX BRIDGE CO.
 ENGINEERING DEPT.
 Cont. No. 736 C. D. No. 736-E
 Drawing No. 6
 Scale 2 1/4", 1 1/2" - 1'-0"
 Drawn by D. Dawson
 Checked by W.G. Christian 4/1/47

Group 5

Last assembly mark pm Shop List pages 1 & 2

