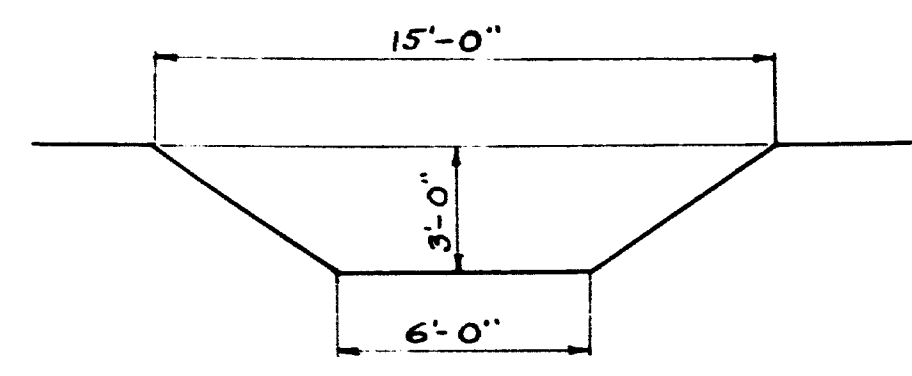
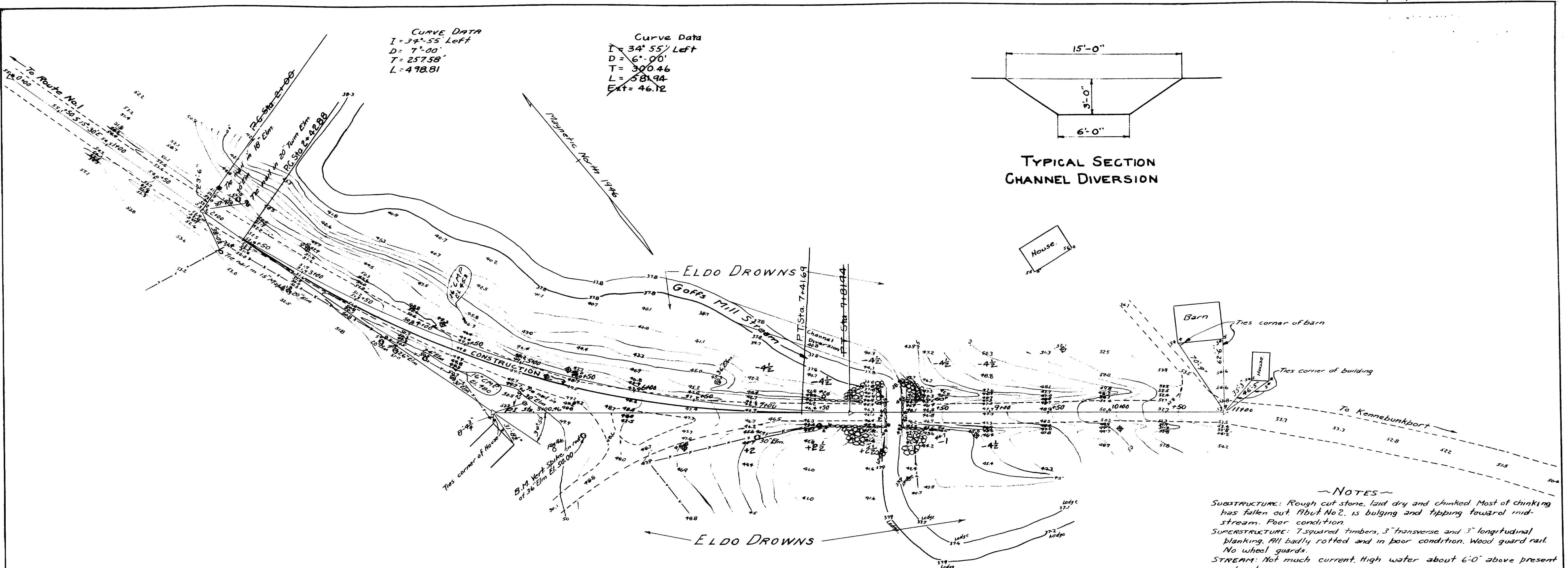


Curve Data  
 I = 34° 55' Left  
 D = 7° 00'  
 T = 257.58'  
 L = 498.81'

Curve Data  
 I = 34° 55' Left  
 D = 6° 00'  
 T = 300.46'  
 L = 581.94'  
 Ext = 46.12'

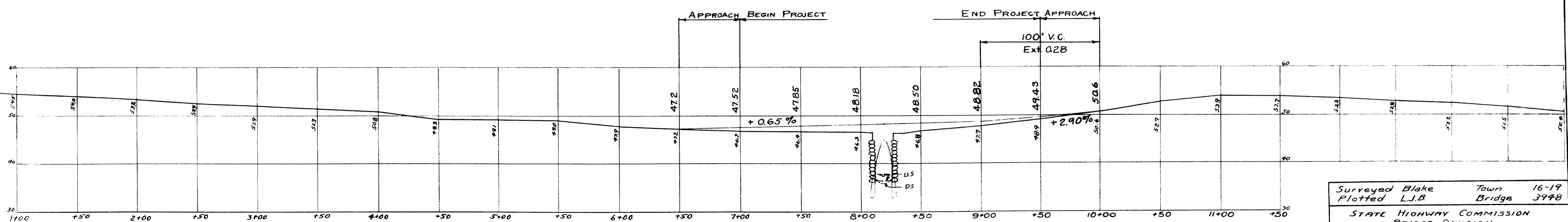


TYPICAL SECTION  
 CHANNEL DIVERSION



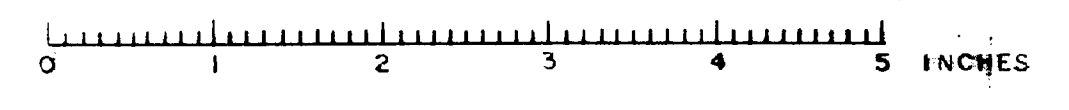
PLAN  
 Scale 1" = 40'

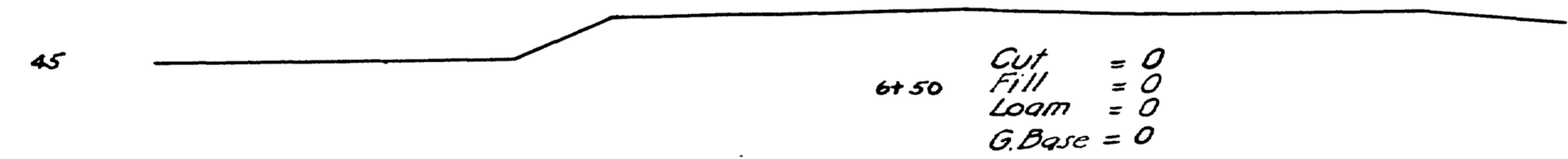
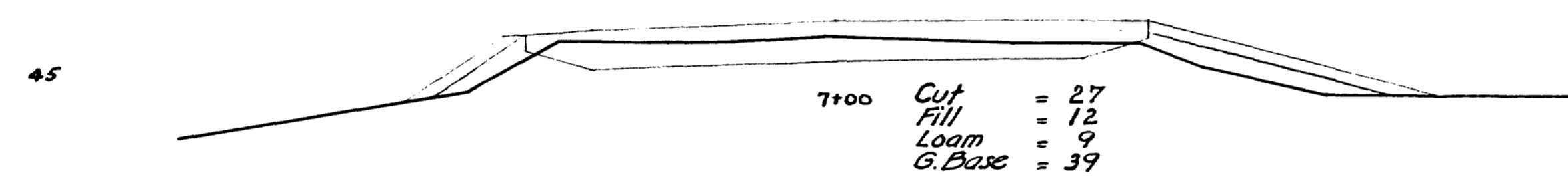
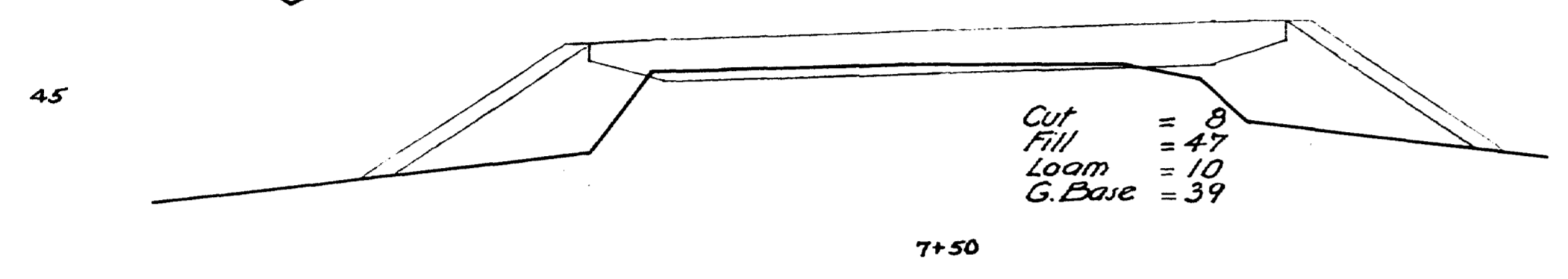
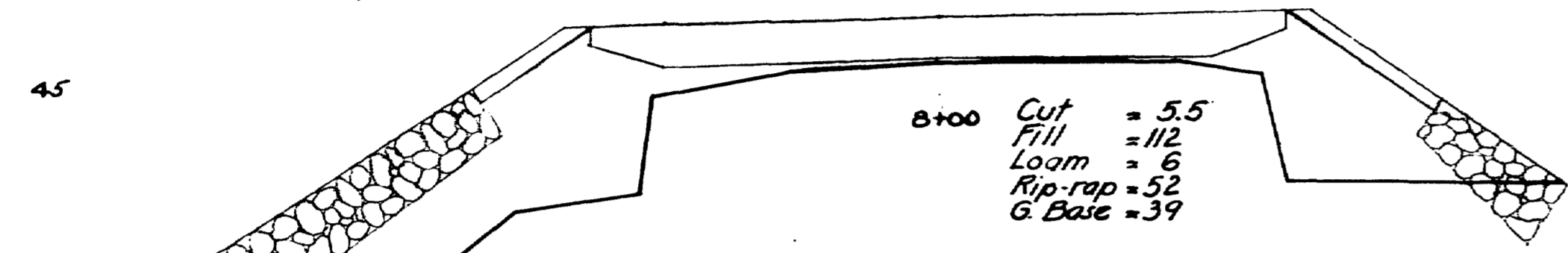
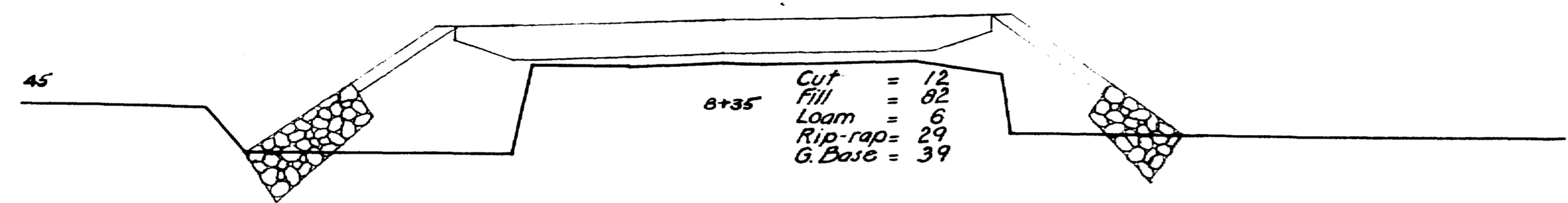
NOTES  
 SUBSTRUCTURE: Rough cut stone, laid dry and chinked. Most of chinking has fallen out. Abut No. 2, is bulging and tipping toward mid-stream. Poor condition.  
 SUPERSTRUCTURE: 7 squared timbers, 3" transverse and 3" longitudinal blanking. All badly rotted and in poor condition. Wood guard rail. No wheel guards.  
 STREAM: Not much current. High water about 6'-0" above present elevation.  
 FOUNDATION: Boulders and ledge.  
 APPROACHES: Surface treated gravel - both ends.



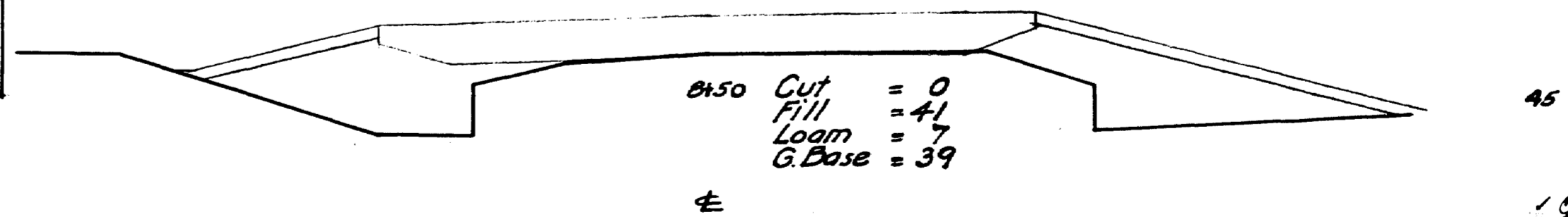
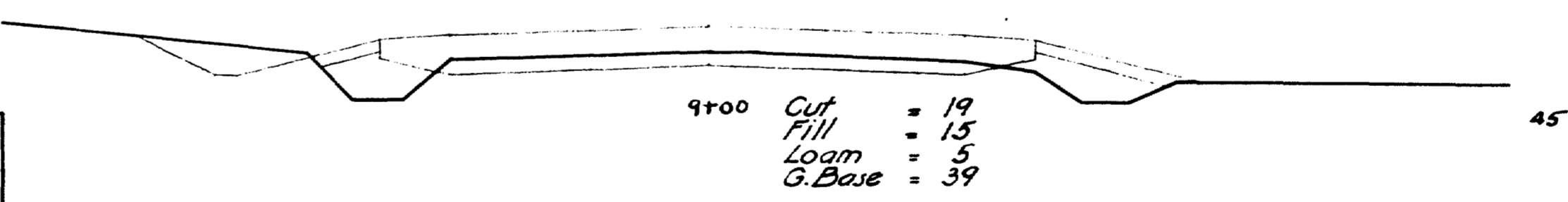
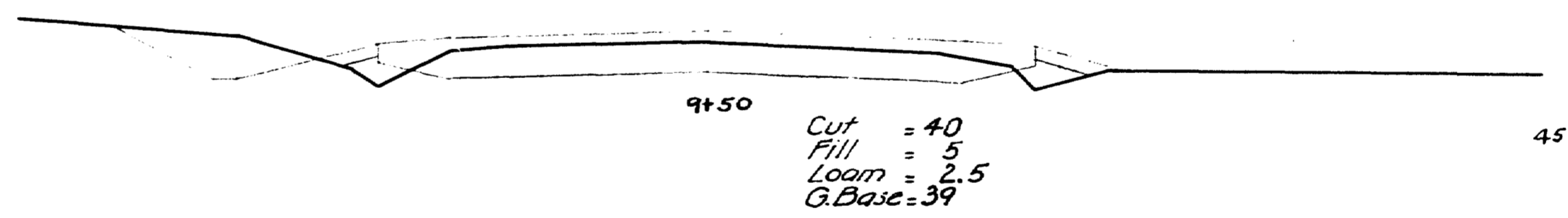
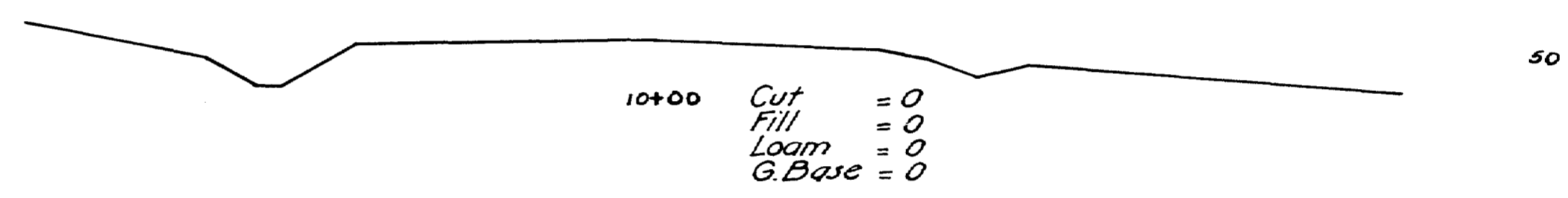
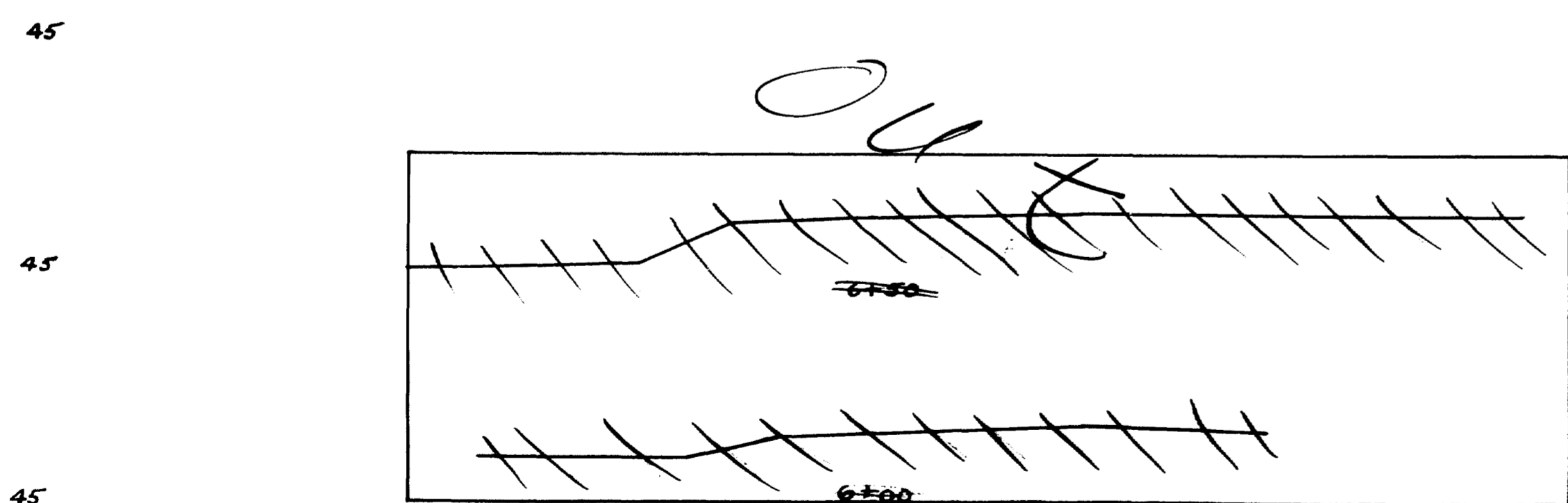
PROFILE  
 Scales Hor. 1" = 40'  
 Vert. 1" = 10'

Surveyed Blake Town 16-19  
 Plotted L.J.B. Bridge 3948  
 STATE HIGHWAY COMMISSION  
 BRIDGE DIVISION  
**HUTCHINS BRIDGE**  
 OVER  
**GOFFS MILL STREAM**  
 in the town of  
**NORTH KENNEBUNKPORT**  
**YORK COUNTY**  
 SURVEY PLAN  
 Sheet 1 of 3 Augusta, Me. April 1946.



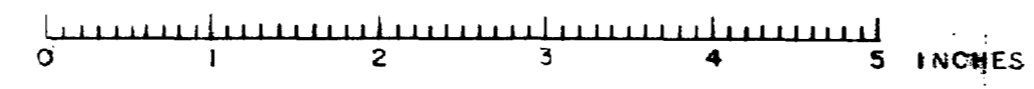


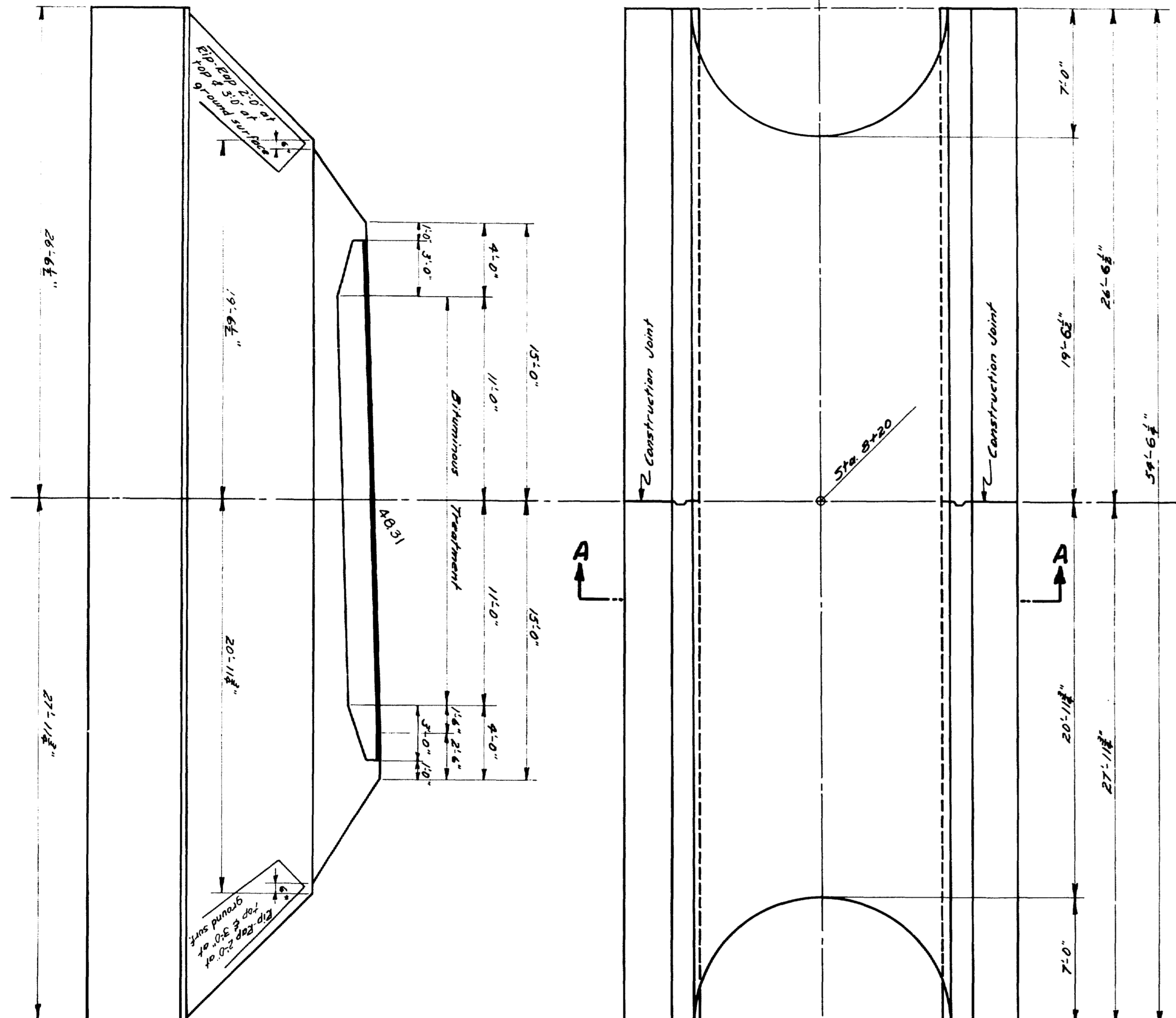
Do not excavate the existing roadway for gravel base wherever the existing material is suitable.



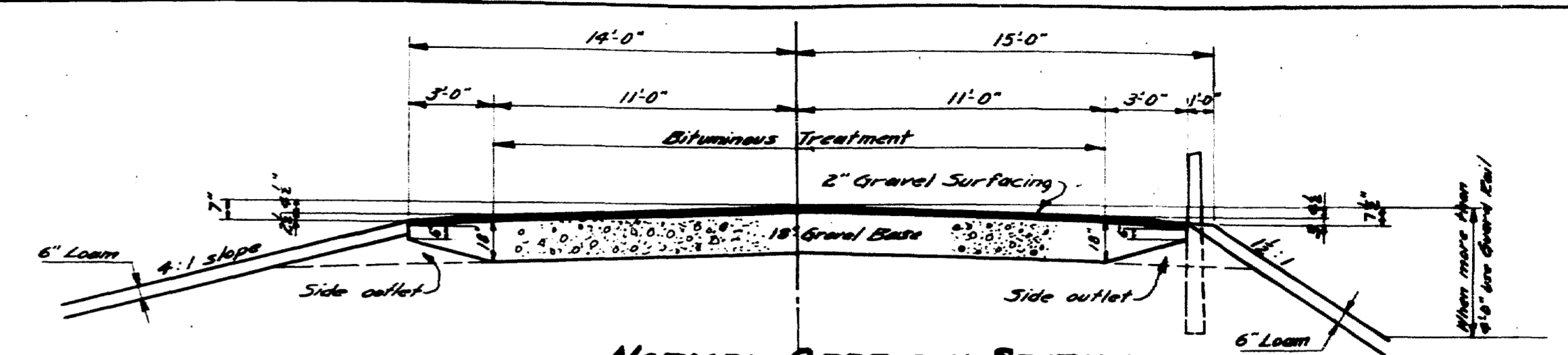
HUTCHINS BRIDGE  
 NORTH KENNEBUNKPORT  
 CROSS SECTIONS

Sheet 2 of 3 Augusta, Me, June, 1946  
 41-162



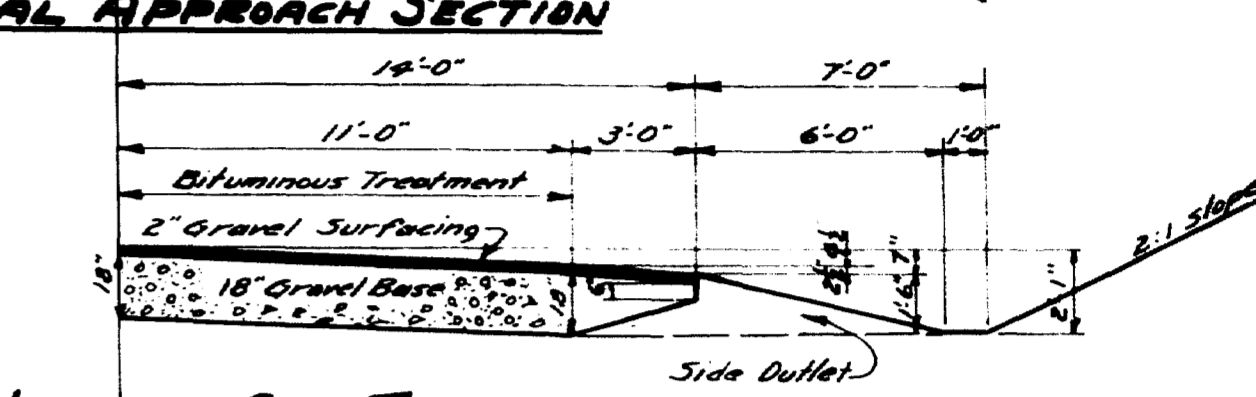


ARCH TO BE PAID FOR AT UNIT PRICE PER LINEAR FOOT.  
 LENGTH TO BE PAID SHALL BE THE AVERAGE OF THE LENGTH OF  
 METAL MEASURED ALONG THE L OF THE ARCH AT THE CROWN  
 AND AT ONE SPRING LINE.  
 (ESTIMATED LENGTH 47.5').

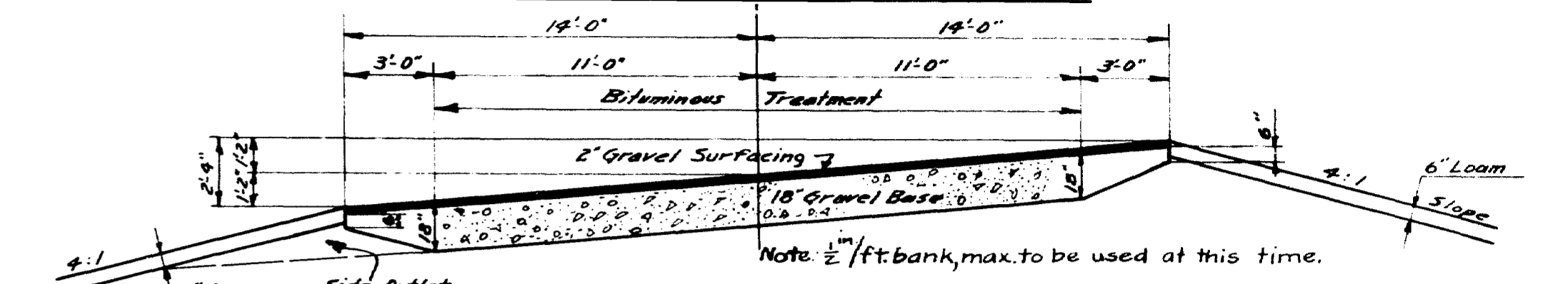


**NORMAL APPROACH SECTION**

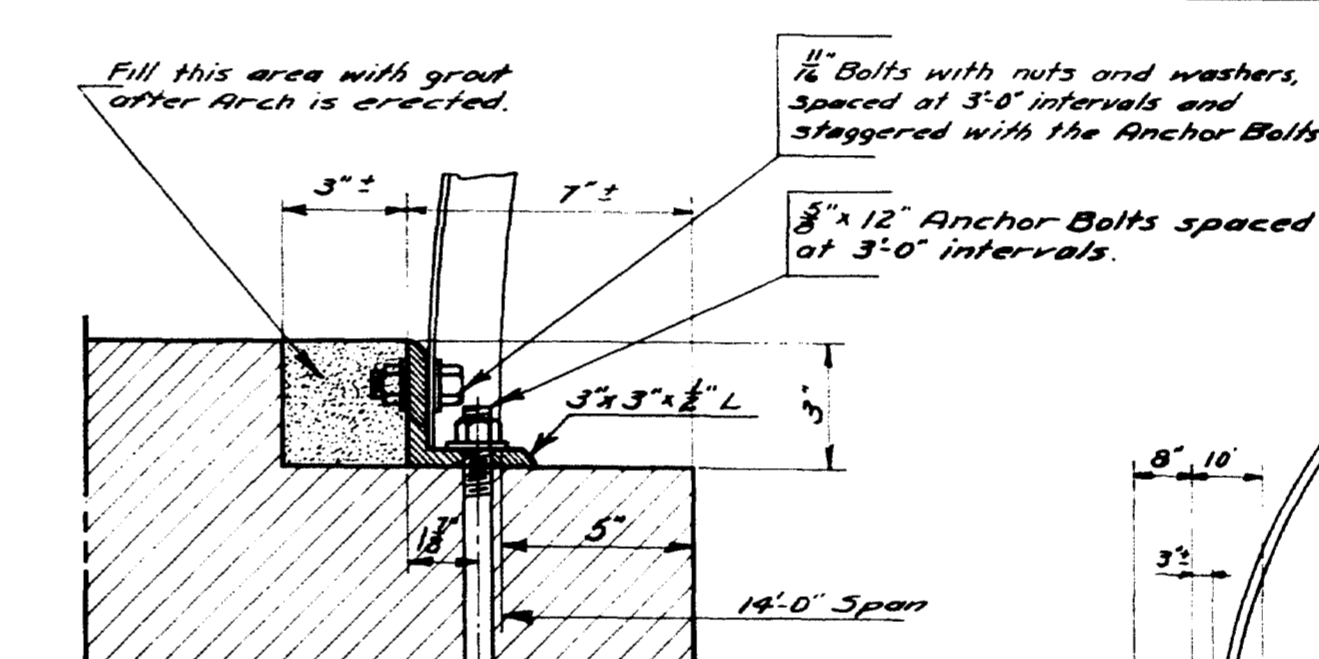
Loamed slopes to be seeded roadside mixture.



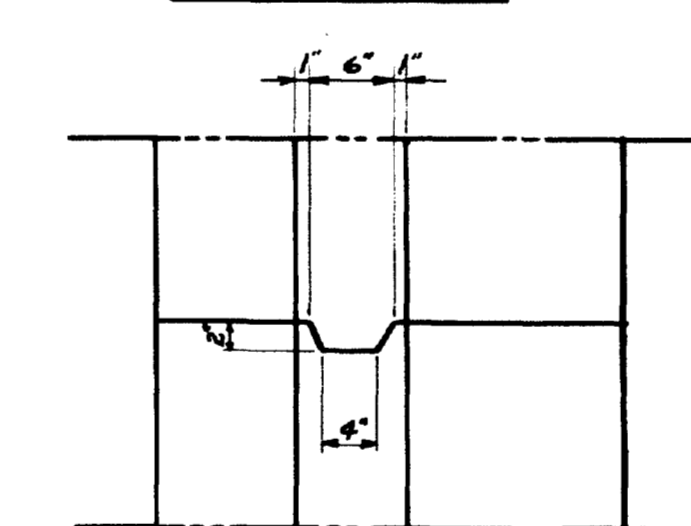
**HALF NORMAL CUT SECTION**



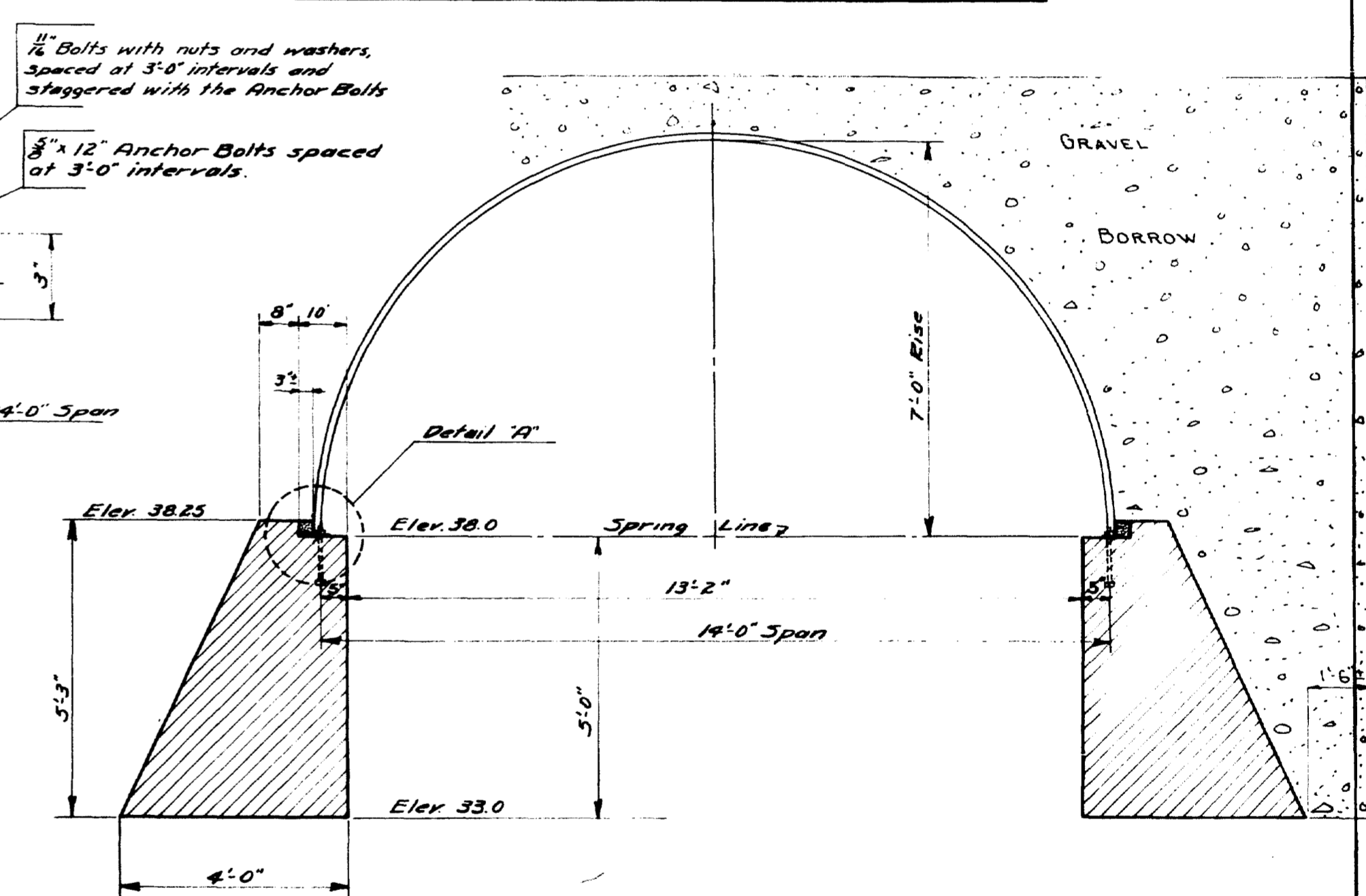
**MAX. BANK SECTION WITH OUT G. RAIL**



**DETAIL "A"**



**BOND BOX DETAIL**  
at Construction Joint



**SECTION A-A**

**MATERIAL REQUIRED**  
 One Sectional Plate Arch #7 gage  
 14'-0" Span, 7'-0" Rise  
 2 L 3"x3"x 1/2"x 26'6" including Anchor Bolts  
 2 L 3"x3"x 1/2"x 27'11" and bolts to Arches

**NOTE:-**  
 Span and rise may be varied slightly if approved by the Engineer. In case of such change the contractor shall provide the Engineer with sufficient information to enable him to make any necessary changes in the abutment section.

**NOTE:-**  
 The gage shown assumes corrugations to have a depth of 1 1/2" at a pitch of 6". If any other system of corrugations is used the gage of the metal shall be sufficient to provide an equivalent section modulus. Not less than four (4) bolts shall be used per foot of longitudinal seam.

Design: A.A.  
 Traced: Clark  
 Checked: [Signature]  
 State Highway Commission  
 Bridge Division  
**HUTCHINS BRIDGE**  
 over  
**GOFFS MILL STREAM**  
 in the town of  
**NORTH KENNEBUNKPORT**  
**YORK COUNTY**  
 "SECTIONAL PLATE ARCH DETAILS"  
 Sheet 3 of 3 Augusta, Maine June 1966

