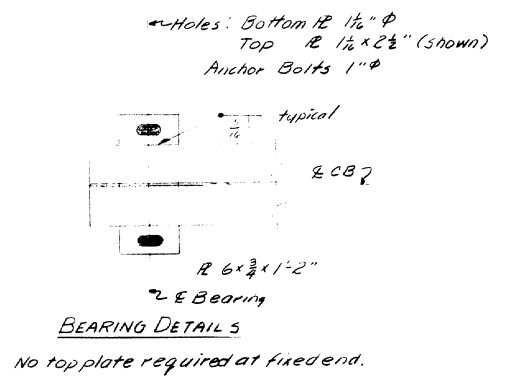


S.P.R. REG. NO.	STATE	PROJECT NUMBER	SHEET NO.	TOTAL SHEETS
1	MAINE			



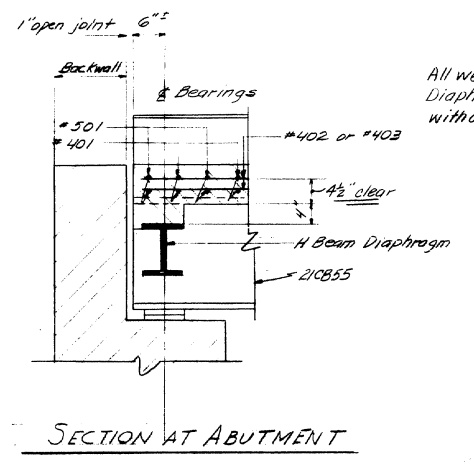
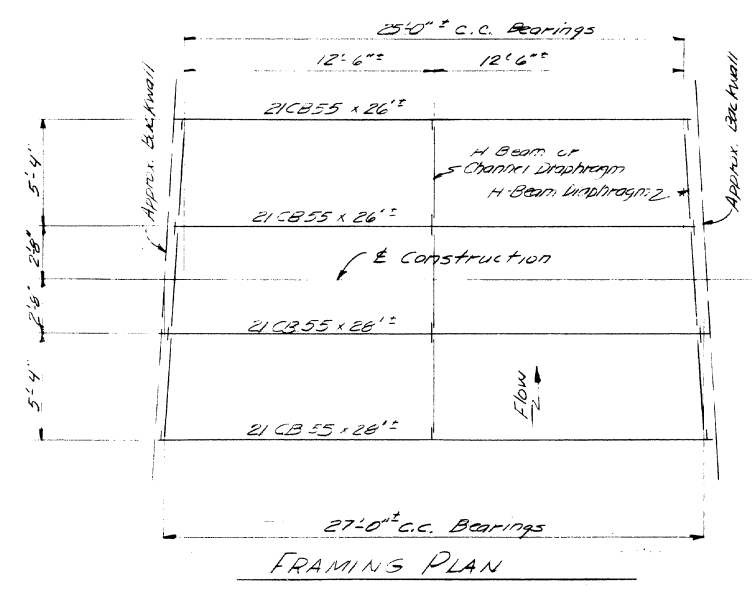
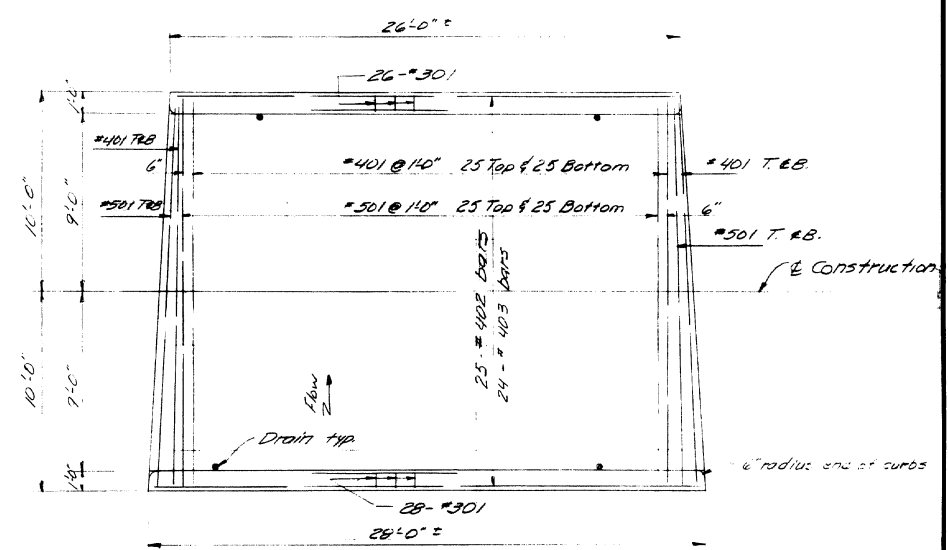
REINFORCING STEEL SCHEDULE

Bar #301 (Furnished by Commission)

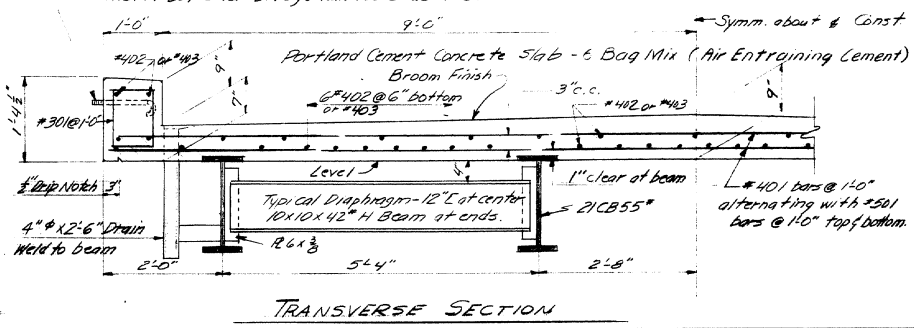
Dimensions to ϕ of bars

Mark	Size	Number	Length	Location
#301	#3	54	3'-5"	Outbs
#401	#4	54	19'-8"	Slab - Transverse
#402	#4	25	26'-6"	Slab - Longitudinal
#403	#4	24	27'-6"	" "
#501	#5	54	19'-8"	Slab - Transverse

Intermediate Grade $f_3 = 20,000$ psi



All welding to be done with low-hydrogen electrodes (E6018 or E7018).
Diaphragms may be welded directly to stringers without use of 6" \times 6" plates, if care is exercised in cutting and fitting.
Install bolts for Bridge Rail Posts as needed.



Live Loading - H 15-44
Structural Steel - $f_y = 18,000$ psi
Class A Concrete - $f_c = 1200$ psi

DESIGN - <i>W</i>	BRIDGE NO. 3405
TRACE - <i>W</i>	SURVEY PLOT -
CHECK - <i>W</i>	

STATE HIGHWAY COMMISSION
BRIDGE DIVISION

DAVIS #2 BRIDGE
OVER
DAVIS STREAM
IN THE TOWN OF
JEFFERSON
LINGOLN COUNTY
PLAN

SHEET 1 OF 1 AUGUSTA, MAINE OCT. 1965

104-79

