

NOTES

EXISTING SUPERSTRUCTURE - 3" x 12" square timber stringers, 4" transverse planks and 3" longitudinal 2" x 4" knee treads. In fair condition.

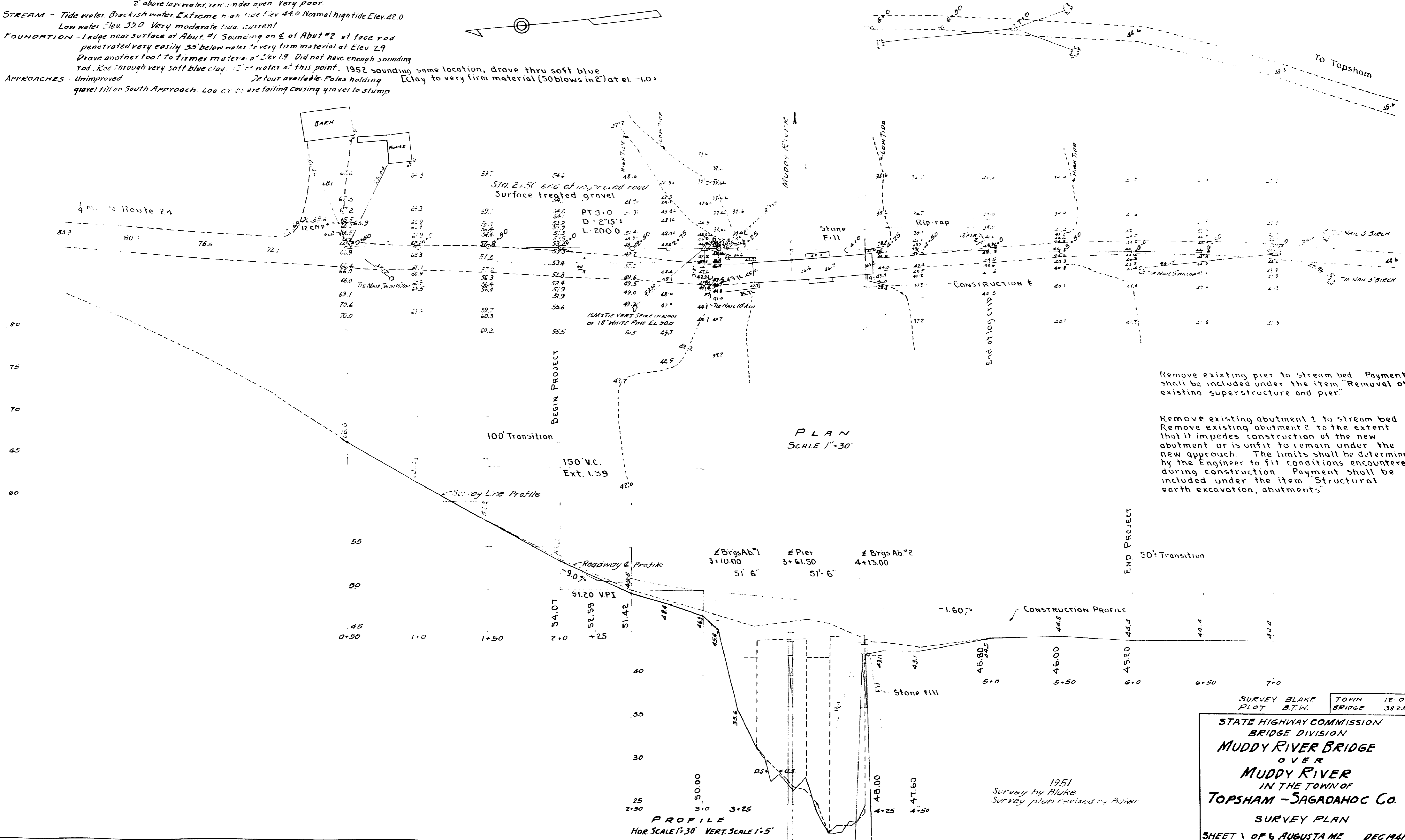
EXISTING SUBSTRUCTURE - Round log cribs partially filled with stone. Pier filled to about 2' above low water, remainder open. Very poor.

STREAM - Tide water. Brackish water. Extreme high tide Elev. 42.0 Normal high tide Elev. 42.0 Low water Elev. 35.0 Very moderate tide. Current.

FOUNDATION - Ledge near surface of Abut. #1 Sounding on E. of Abut. #2 at face rod penetrated very easily 35' below water to very firm material at Elev. 2.9

Drove another foot to firmer material at Elev. 1.9. Did not have enough sounding rod. Rod through very soft blue clay. No water at this point. 1952 sounding same location, drove thru soft blue

APPROACHES - Unimproved. No four available. Poles holding. Clay to very firm material (50 blows in 2') at el. -1.0 gravel till on South Approach. Log cribs are failing causing gravel to slump



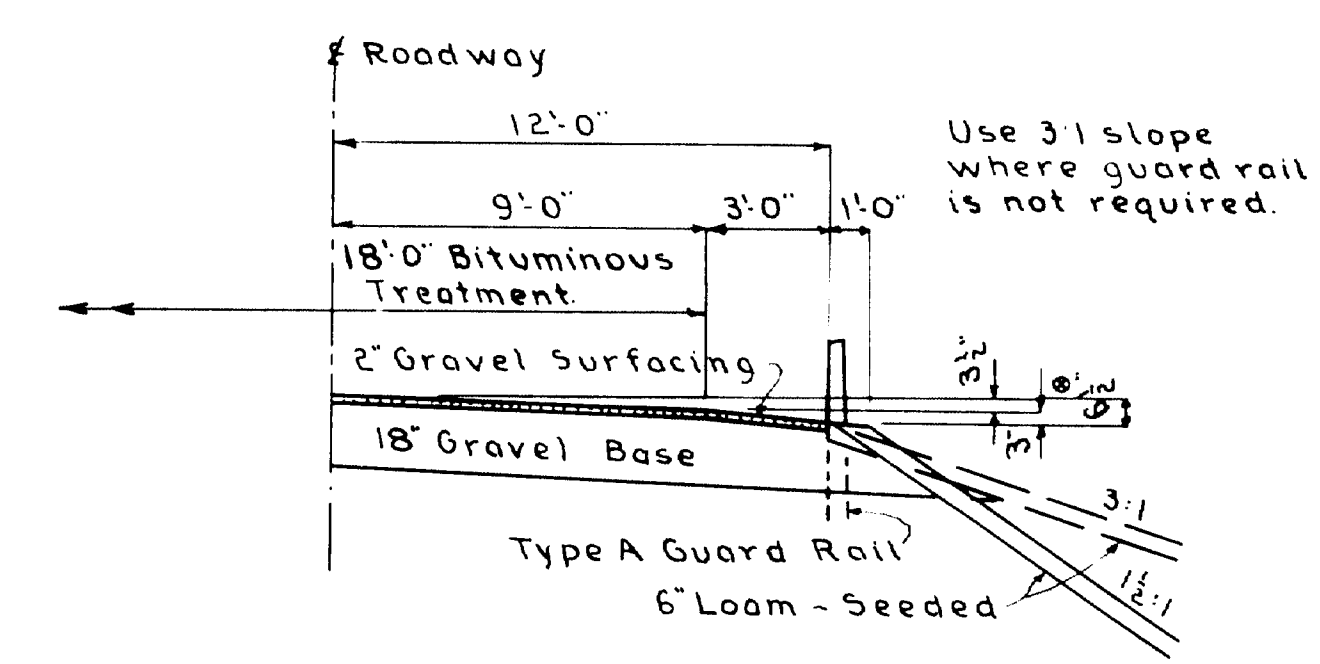
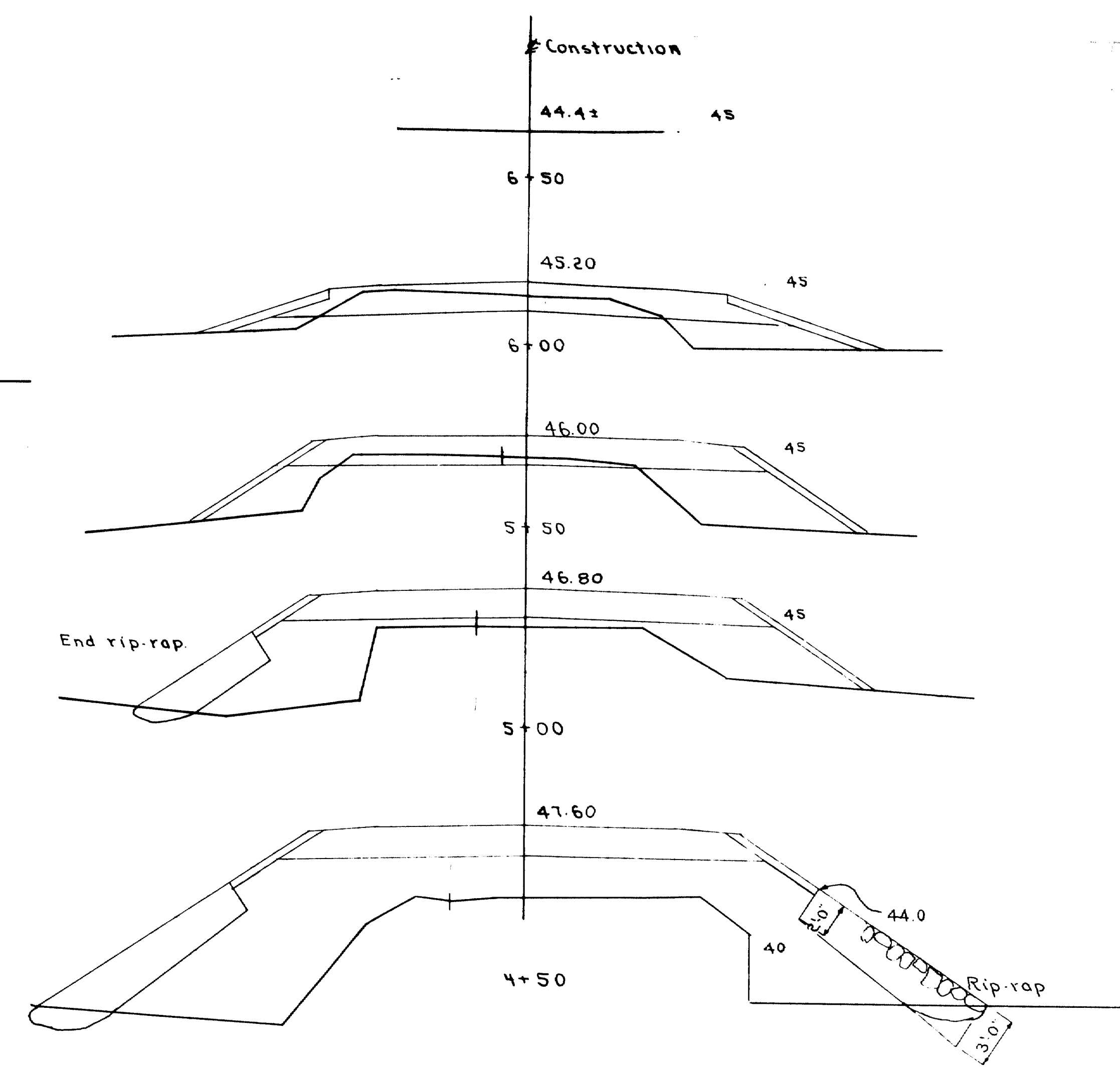
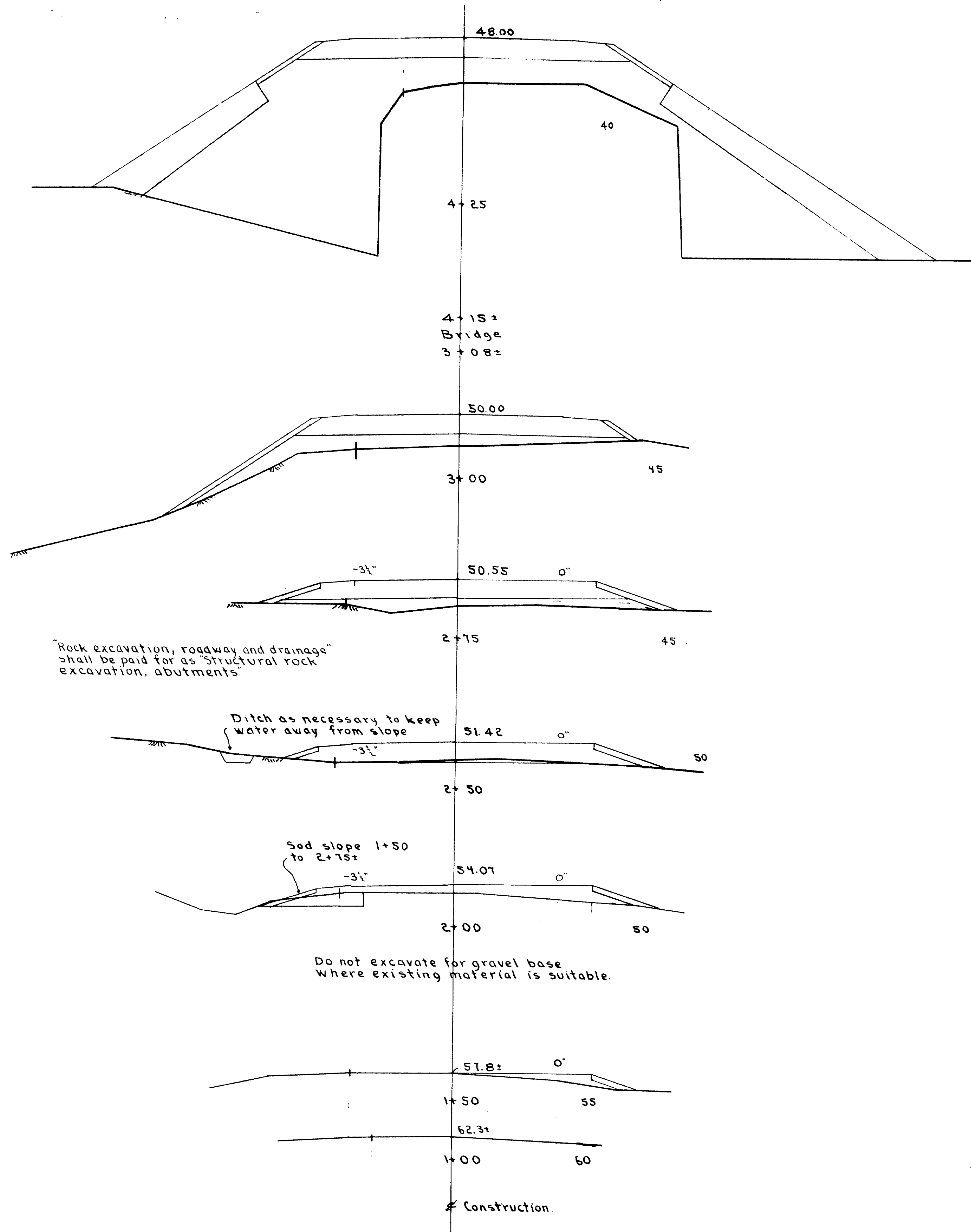
Remove existing pier to stream bed. Payment shall be included under the item "Removal of existing superstructure and pier."

Remove existing abutment 1 to stream bed. Remove existing abutment 2 to the extent that it impedes construction of the new abutment or is unfit to remain under the new approach. The limits shall be determined by the Engineer to fit conditions encountered during construction. Payment shall be included under the item "Structural earth excavation, abutments."

SURVEY BLAKE TOWN 12-09
 PLOT B.T.W. BRIDGE 3825

STATE HIGHWAY COMMISSION
 BRIDGE DIVISION
Muddy River Bridge
 OVER
Muddy River
 IN THE TOWN OF
TOPSHAM - SAGADAHOC Co.

SURVEY PLAN
 SHEET 1 OF 6 AUGUSTA ME DEC 1941



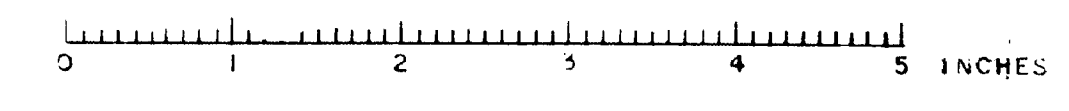
ROADWAY SECTION

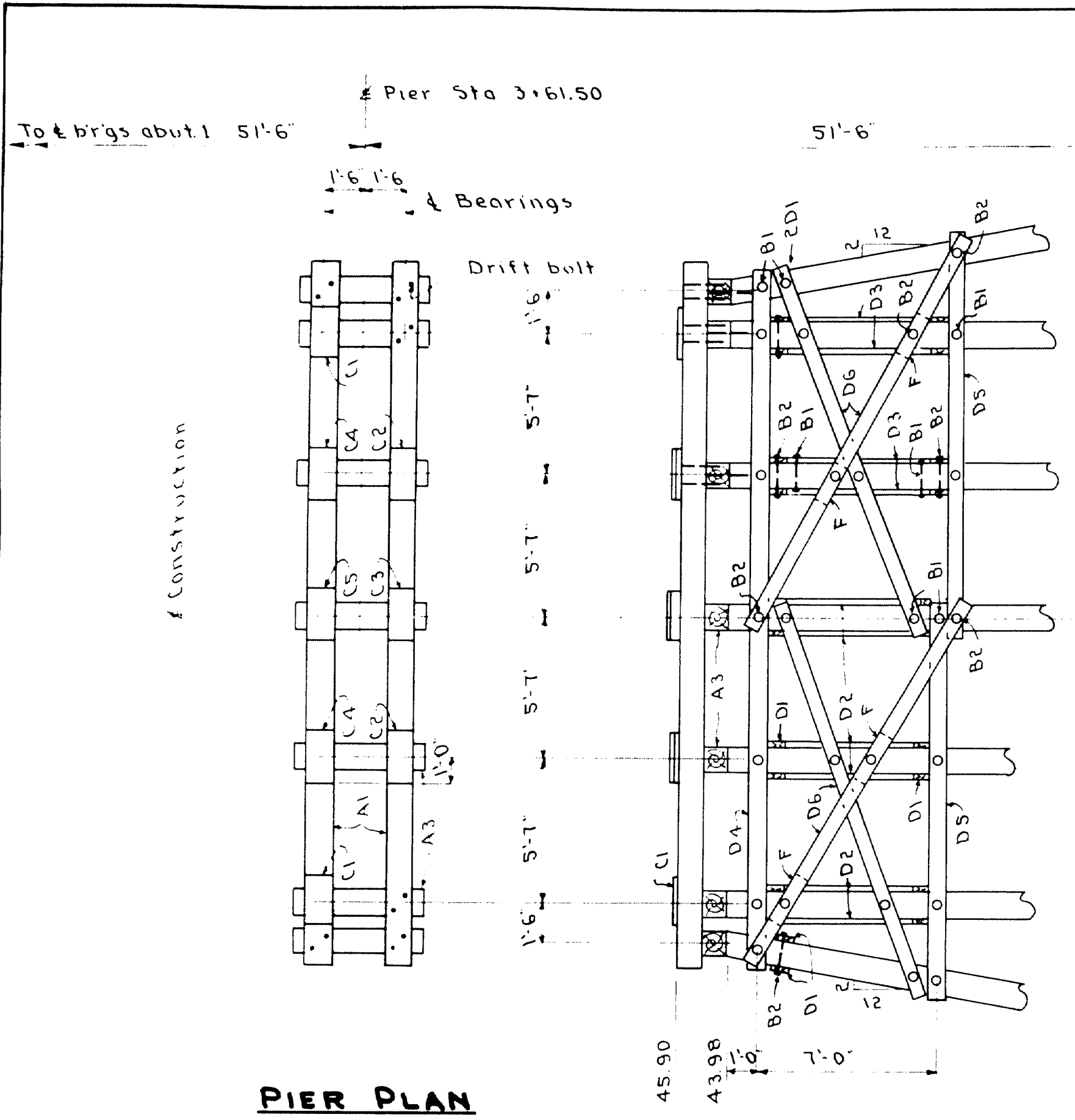
⊕ No crown on right side Sta. 1+50 to 2+15, incl.

PLAN-BROOKS	BRIDGE 3825
CHECK: <i>Franklin</i>	STATE HIGHWAY COMMISSION BRIDGE DIVISION
MUDDY RIVER BRIDGE	
OVER	
MUDDY RIVER	
IN THE TOWN OF	
TOPSHAM	
SAGadahoc COUNTY	
CROSS SECTIONS	
SHEET 2 OF 6	AUGUSTA, MAINE OCT. 1952

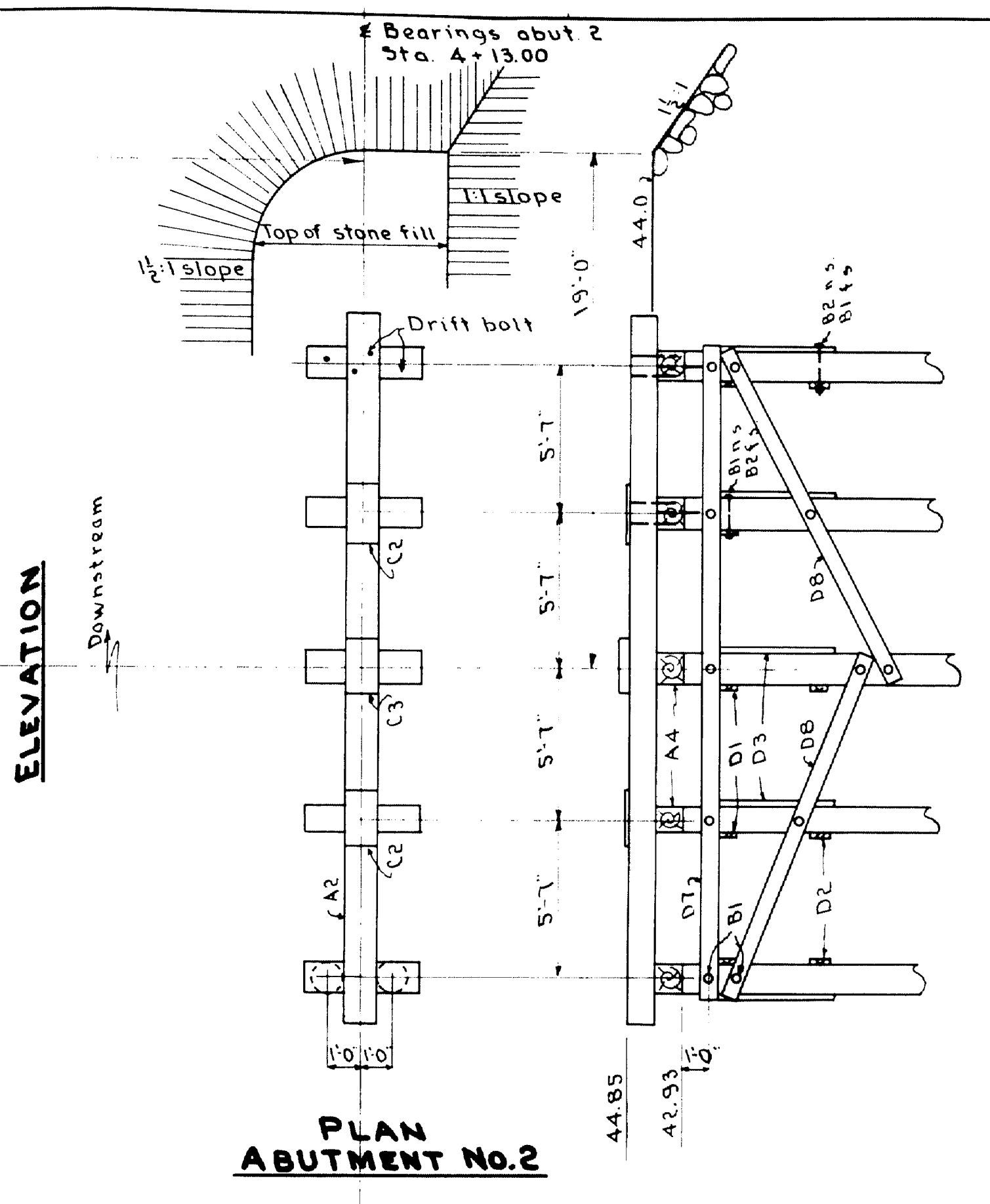
Survey Sheet
filed, PLAN FILE 40-16

58:144

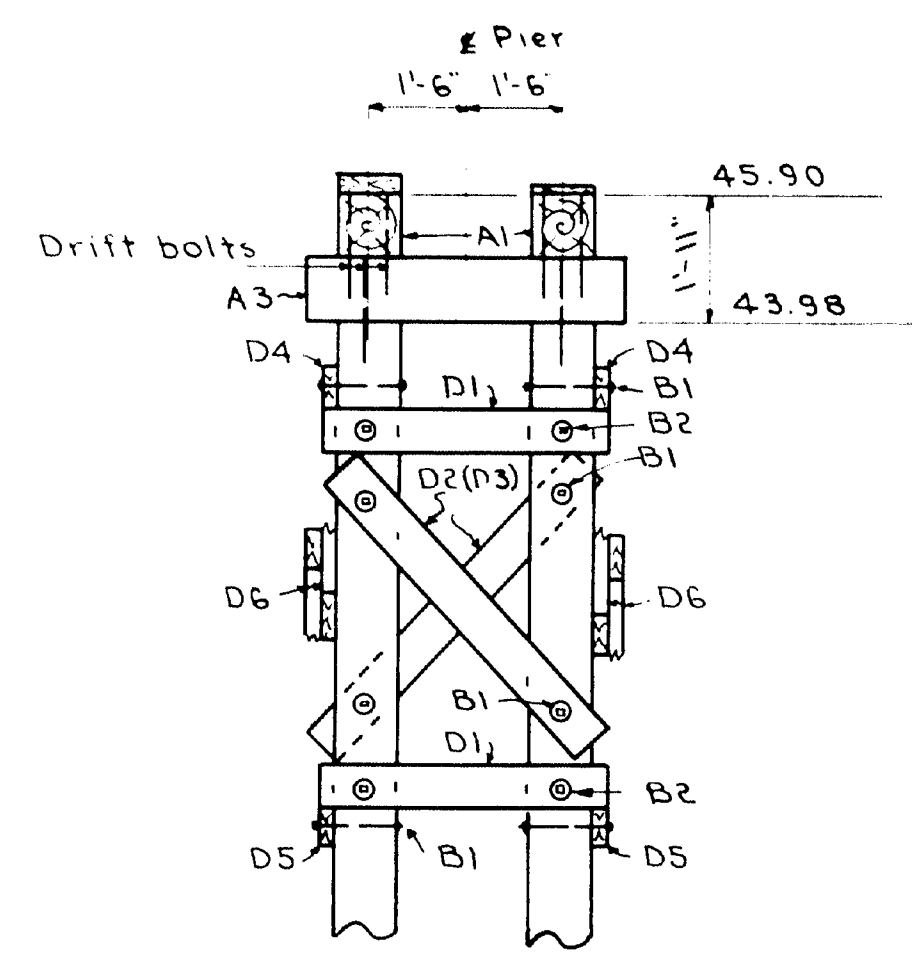




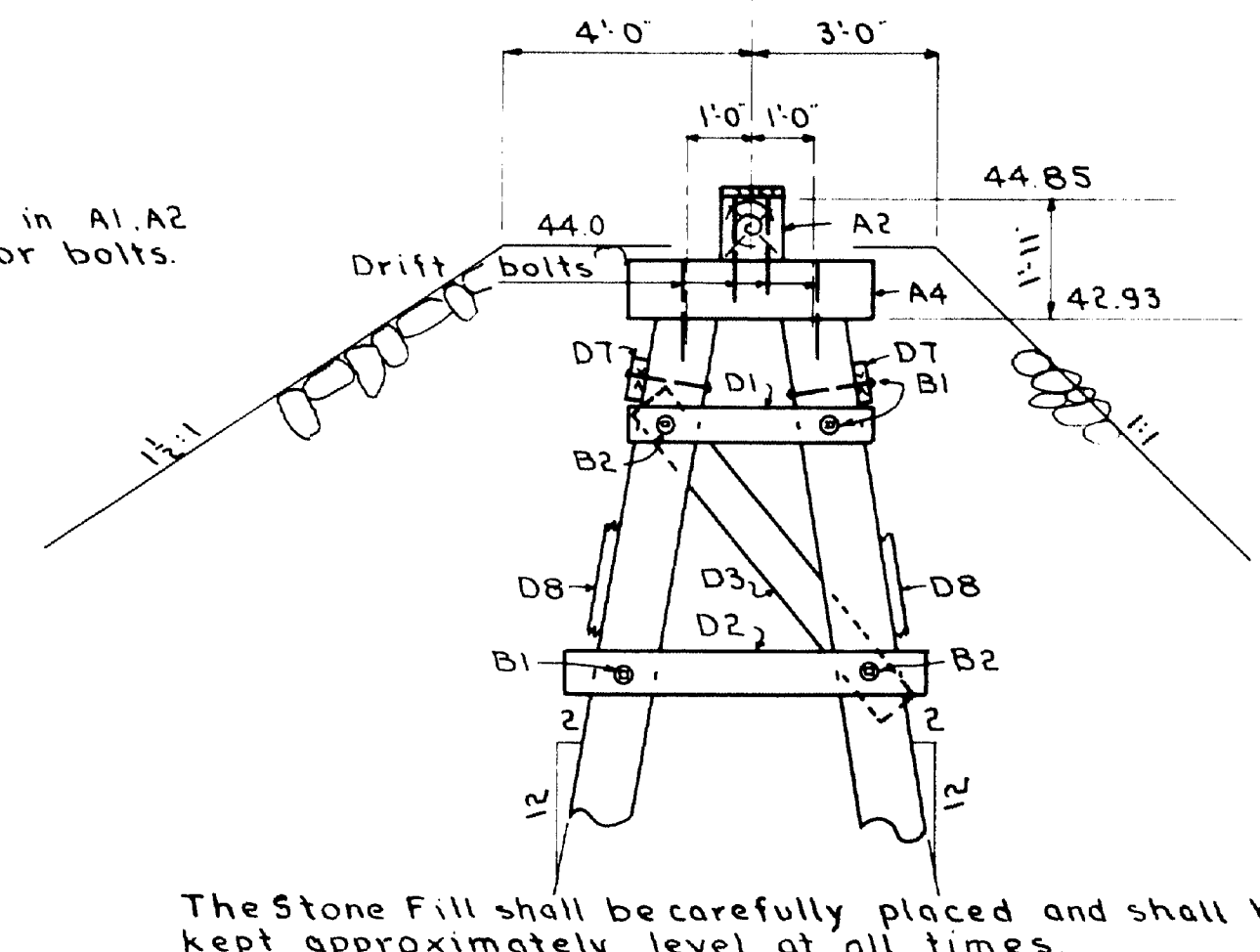
PIER PLAN



PLAN ABUTMENT NO. 2

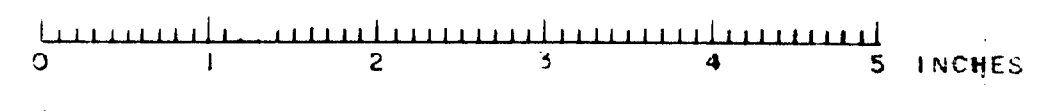


PIER SECTION



ABUTMENT SECTION

The Stone Fill shall be carefully placed and shall be kept approximately level at all times. Care shall be taken to avoid any method of placing which may result in lateral movement of the stone fill and the resultant displacement of the abutment.



Mark	No.	Size	Dress	Fin Size	Length	Remarks
A1	2	12 x 12	25	11 1/2 x 12	28'-0"	Pier
A2	1	12 x 12	25	11 1/2 x 12	26'-0"	Abut 2
A3	7	12 x 12	25	11 1/2 x 12	5'-0"	Pier
A4	5	12 x 12	25	11 1/2 x 12	4'-0"	Abut 2
C1	2	1 x 12	25	3/8 x 12	2'-0"	Pier
C2	4	2 x 12	25	1 1/4 x 12	2'-0"	Pier & Abut 2
C3	2	3 x 12	25	2 1/4 x 12	2'-0"	Pier & Abut 2
C4	2	2 x 12	25	1 3/8 x 12	2'-0"	Pier
C5	1	3 x 12	25	2 1/8 x 12	2'-0"	Pier
D1	29	3 x 8			4'-6"	Pier & Abut 2
D2	11	3 x 8			6'-0"	Pier & Abut 2
D3	9	3 x 8			7'-0"	Pier & Abut 2
D4	2	3 x 8			28'-0"	Pier
D5	4	3 x 8			16'-0"	Pier
D6	8	3 x 8			18'-0"	Pier
D7	2	3 x 8			26'-0"	Abut 2
D8	4	3 x 8			14'-0"	Abut 2
F	12	3 x 8			1'-6"	fills
	2	3 x 8			16'-0"	extra

All timber shall be pressure treated

TIMBER SCHEDULE

PILES

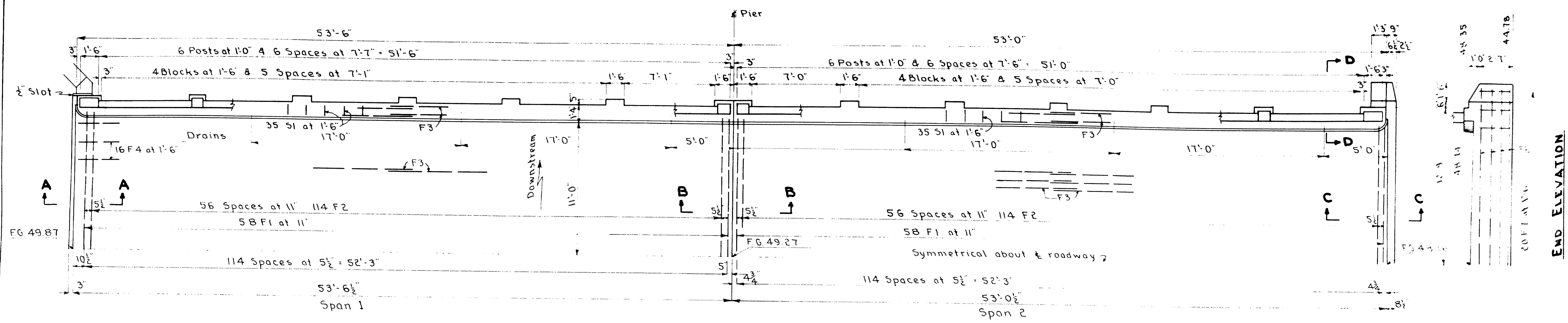
All piles shall be wood, treated
24 required Estimated length 50 ft

Mark	Kind	Size	No.	Remarks
B1	Mach.	3/4" x 1'-1"	95	Galvanized
B2	Mach.	3/4" x 1'-10"	55	Galvanized
	Cast washers	3/4"	300	
	Drift bolts	3/4" x 1'-8"	65	

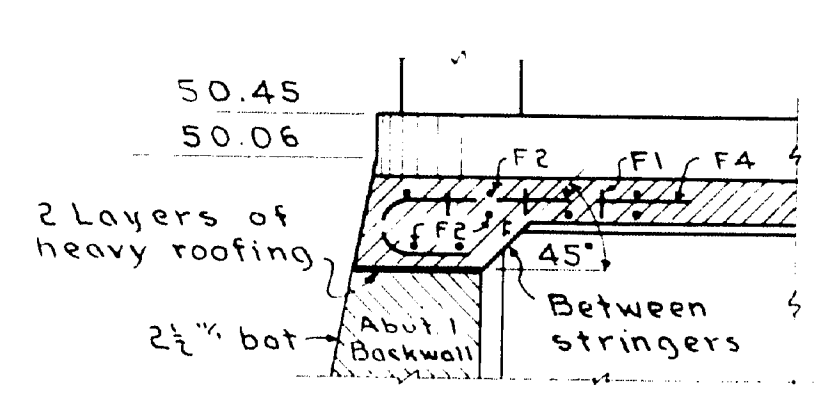
BOLT SCHEDULE

Also required about 100 lbs 60d galv. nails. Payment for nails shall be included under Pile trestle cap including bracing and sheathing. If practical at the time of construction, the length of bolts should be checked against the actual size of pile received, before ordering bolts

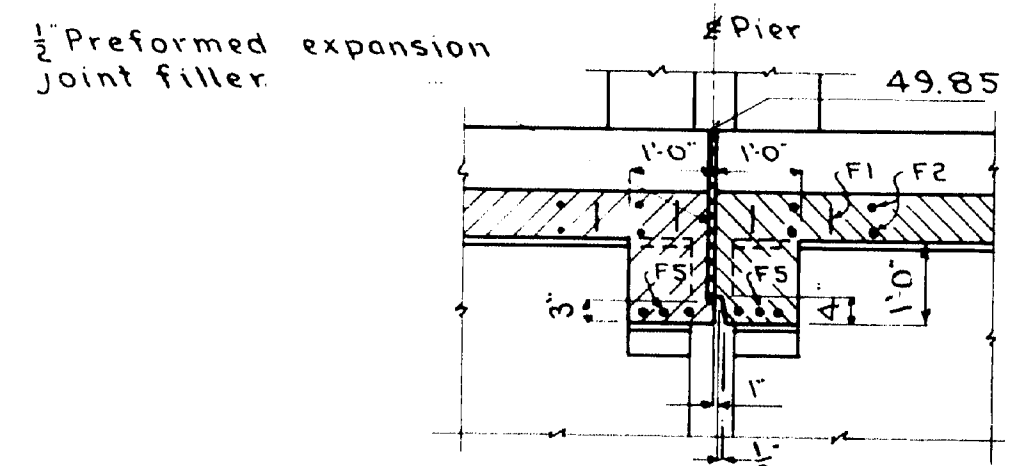
PLAN - BROOKS	BRIDGE 3825
CHECK <i>[Signature]</i>	
STATE HIGHWAY COMMISSION BRIDGE DIVISION	
MUDDY RIVER BRIDGE	
OVER	
MUDDY RIVER	
IN THE TOWN OF	
TOPSHAM	
SAGadahoc COUNTY	
PIER & ABUTMENT NO. 2	
SHEET 4 OF 6	AUGUSTA, MAINE OCT. 1952



SLAB PLAN

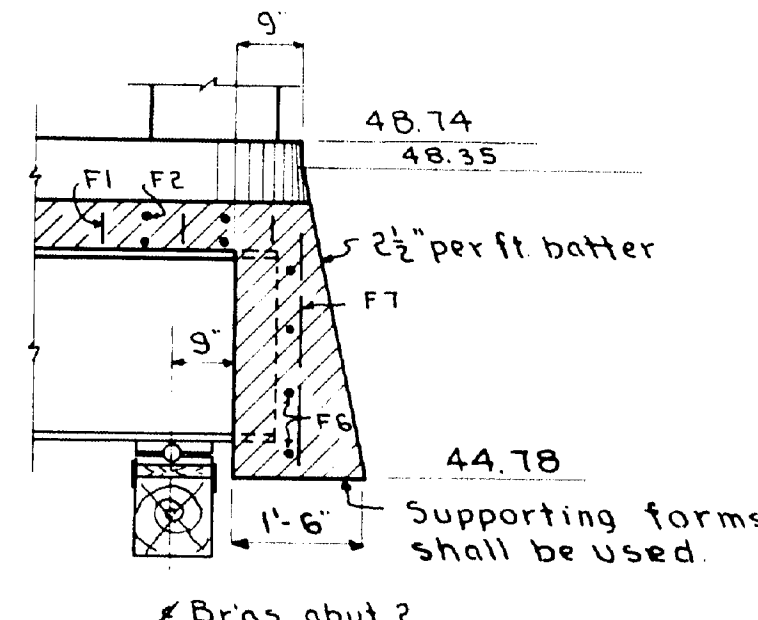


SECTION A-A

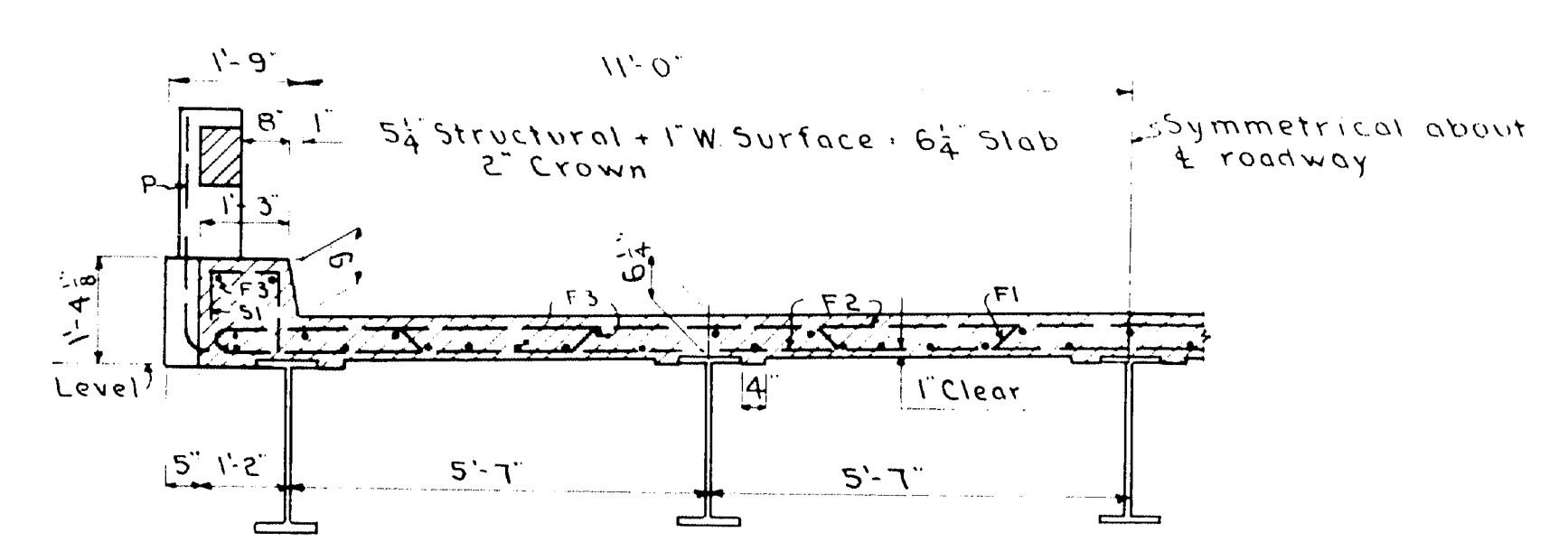


SECTION B-B

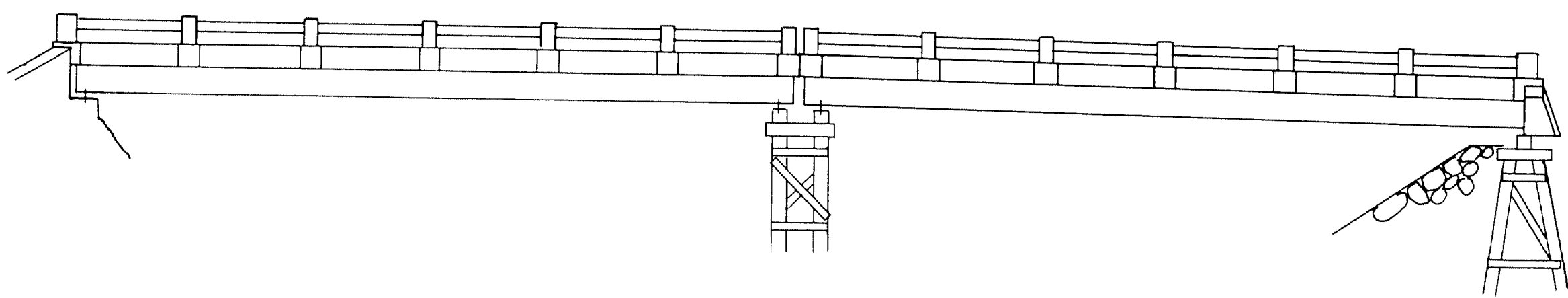
Concrete diaphragms between stringers, only. Fasten exp joint filler between curbs with galvanized nails.



SECTION C-C



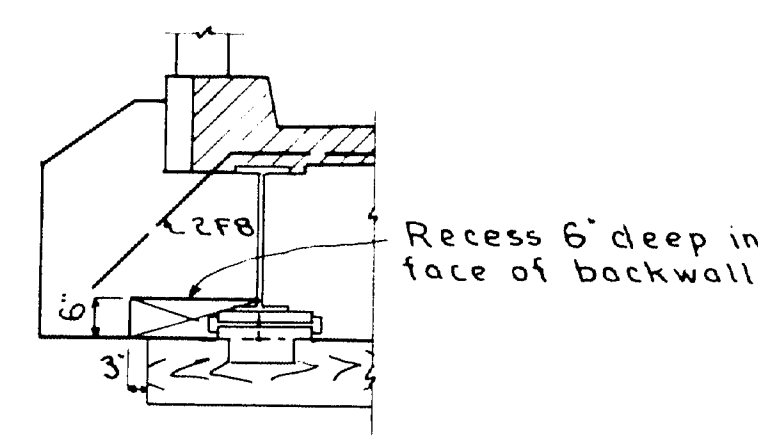
TYPICAL SECTION



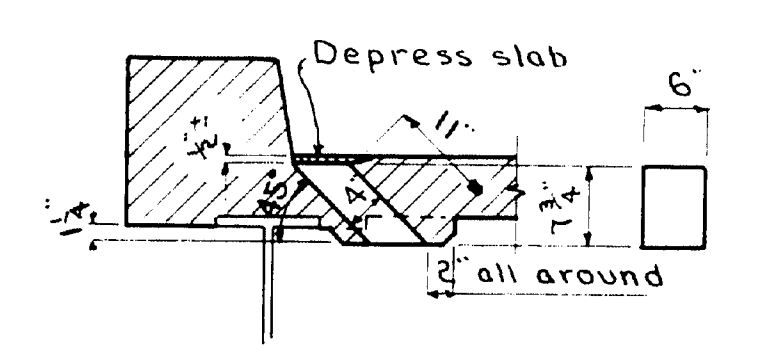
U.S. ELEVATION

± Brigs abut 1 FG. 49.84
 ± Brigs abut 2 FG. 48.19
 ± Pier 49.02+0.25 = FG. 49.27
 The 1 1/2" camber in each stringer less the 3/4" dead load deflection provides finished grades approximating a vertical curve thru the above points.

Cover the 1/2" open slot between the curb and parapet at abut. 1 on the back side with two layers of heavy roofing 10" wide. Coat the concrete and the contact surfaces of the roofing with a suitable grade of roofing cement. Recess the area to be covered 3/8" into the concrete.



SECTION D-D



DRAIN DETAIL

Drain forms 24 gage galv metal 12 Required.

LOADING HIS-44
 FS 18,000 Fc 1,200 n=10

CONCRETE CLASSIFICATION
 Class A Slab
 " B Abut 1
 " Y Rail

PLAN: BROOKS	BRIDGE 3825
CHECK: <i>[Signature]</i>	
STATE HIGHWAY COMMISSION BRIDGE DIVISION	
MUDDY RIVER BRIDGE	
OVER	
MUDDY RIVER	
IN THE TOWN OF	
TOPSHAM	
SAGadahoc COUNTY	
SUPERSTRUCTURE SLAB	
SHEET 5 OF 6 AUGUSTA, MAINE OCT. 1952	



