



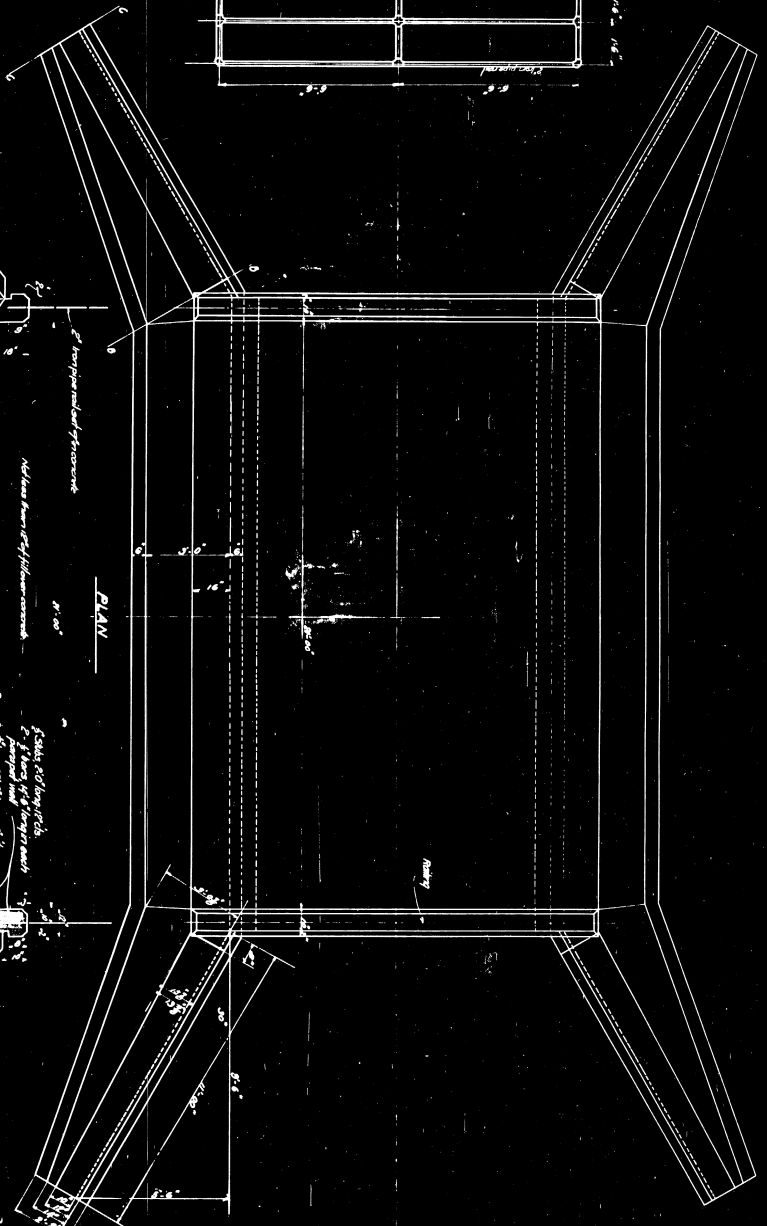
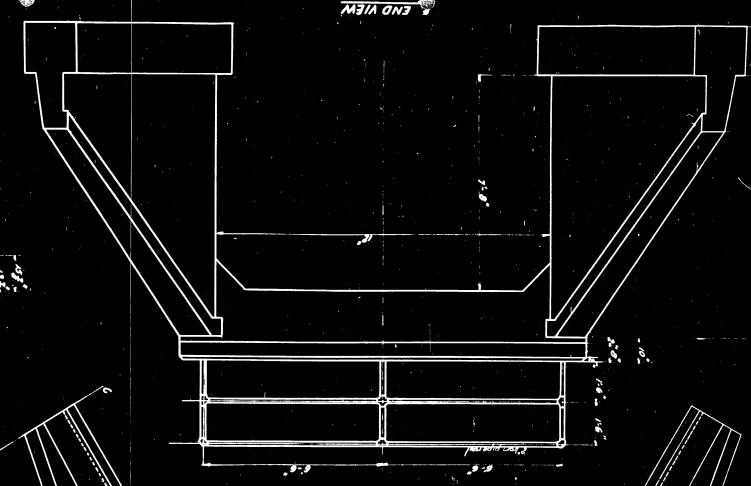
END VIEW

SECTION C-C

SECTION A-A

HALF REAR ELEVATION

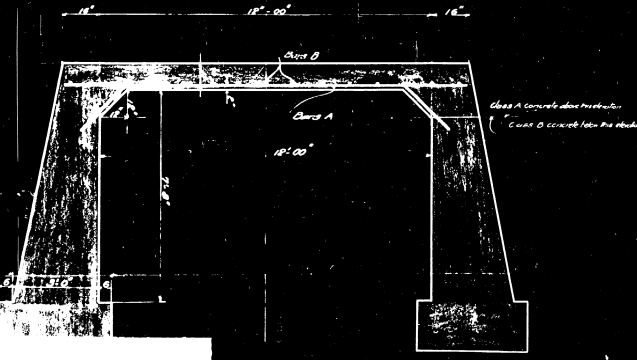
HALF LONGITUDINAL SECTION



PLAN

Scale 1/4" = 1'-0"  
1" = 1'-0"  
2" = 1'-0"  
3" = 1'-0"  
4" = 1'-0"  
5" = 1'-0"  
6" = 1'-0"  
7" = 1'-0"  
8" = 1'-0"  
9" = 1'-0"  
10" = 1'-0"  
11" = 1'-0"  
12" = 1'-0"  
13" = 1'-0"  
14" = 1'-0"  
15" = 1'-0"  
16" = 1'-0"  
17" = 1'-0"  
18" = 1'-0"  
19" = 1'-0"  
20" = 1'-0"  
21" = 1'-0"  
22" = 1'-0"  
23" = 1'-0"  
24" = 1'-0"  
25" = 1'-0"  
26" = 1'-0"  
27" = 1'-0"  
28" = 1'-0"  
29" = 1'-0"  
30" = 1'-0"  
31" = 1'-0"  
32" = 1'-0"  
33" = 1'-0"  
34" = 1'-0"  
35" = 1'-0"  
36" = 1'-0"  
37" = 1'-0"  
38" = 1'-0"  
39" = 1'-0"  
40" = 1'-0"  
41" = 1'-0"  
42" = 1'-0"  
43" = 1'-0"  
44" = 1'-0"  
45" = 1'-0"  
46" = 1'-0"  
47" = 1'-0"  
48" = 1'-0"  
49" = 1'-0"  
50" = 1'-0"  
51" = 1'-0"  
52" = 1'-0"  
53" = 1'-0"  
54" = 1'-0"  
55" = 1'-0"  
56" = 1'-0"  
57" = 1'-0"  
58" = 1'-0"  
59" = 1'-0"  
60" = 1'-0"  
61" = 1'-0"  
62" = 1'-0"  
63" = 1'-0"  
64" = 1'-0"  
65" = 1'-0"  
66" = 1'-0"  
67" = 1'-0"  
68" = 1'-0"  
69" = 1'-0"  
70" = 1'-0"  
71" = 1'-0"  
72" = 1'-0"  
73" = 1'-0"  
74" = 1'-0"  
75" = 1'-0"  
76" = 1'-0"  
77" = 1'-0"  
78" = 1'-0"  
79" = 1'-0"  
80" = 1'-0"  
81" = 1'-0"  
82" = 1'-0"  
83" = 1'-0"  
84" = 1'-0"  
85" = 1'-0"  
86" = 1'-0"  
87" = 1'-0"  
88" = 1'-0"  
89" = 1'-0"  
90" = 1'-0"  
91" = 1'-0"  
92" = 1'-0"  
93" = 1'-0"  
94" = 1'-0"  
95" = 1'-0"  
96" = 1'-0"  
97" = 1'-0"  
98" = 1'-0"  
99" = 1'-0"  
100" = 1'-0"

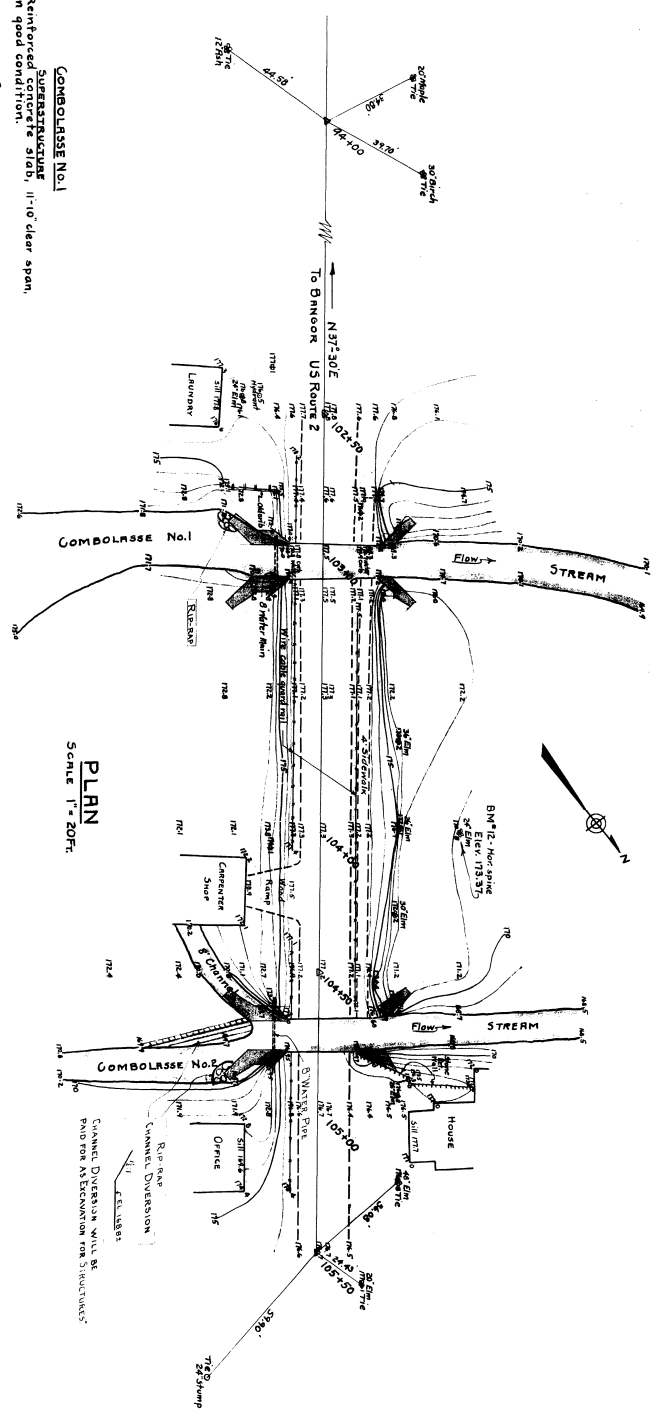
1/62 LINCOLN  
CONCRETE  
LINCOLN



CROSS SECTION

MAINE HIGHWAY CO.  
STATE-aid CONCRETE  
LINCOLN  
Scale 1/4" = 1'-0"

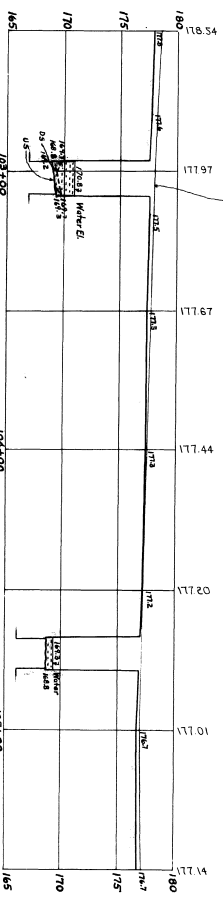
DATE	BY	NO.	REV.	REASON
7/27/21	37	22		



**PLAN**  
SCALE 1" = 20 FT.

**COMBOLASSE No. 1**  
**SUBSTRUCTURE**  
 Reinforced concrete slab, 11'-0" clear span, in good condition.  
**STRUCTURE**  
 Concrete abutments and retaining walls in good condition.  
**APPURTENANCES**  
 Surface treated gravel.  
**FOUNDATIONS**  
 Taken 12 ft. U.S. from Reul. # 2 along the edge of water. Slow penetration thru gravel to 45 ft. below water level.

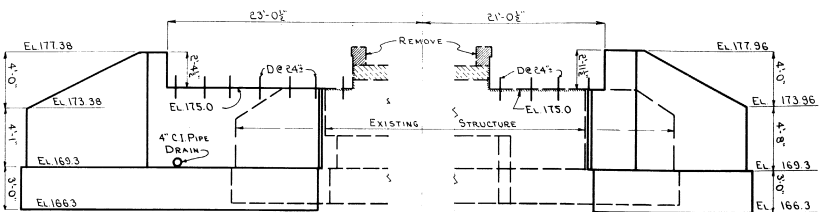
**COMBOLASSE No. 2**  
**SUBSTRUCTURE**  
 Reinforced concrete slab, 11'-0" clear span, in good condition.  
**STRUCTURE**  
 Concrete abutments and retaining walls in good condition.  
**APPURTENANCES**  
 Surface treated gravel.  
**FOUNDATIONS**  
 Taken 8 ft. U.S. on bridge. Very slow penetration thru gravel to 45 ft. below water level.



**PROFILE**  
 HOR. SCALE 1" = 20 FT.  
 VERT. " 1" = 5 FT.

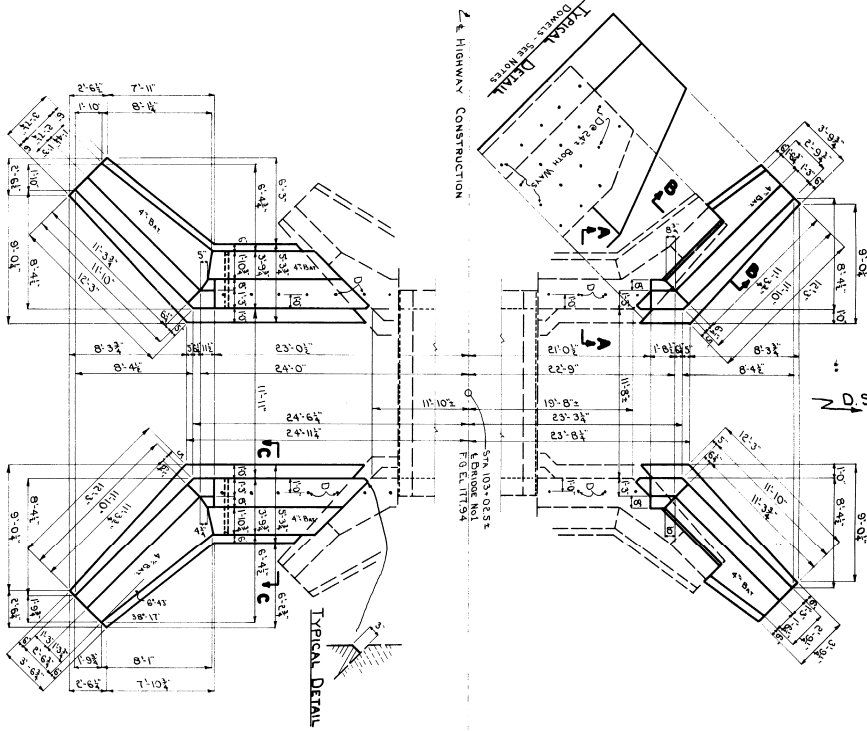


SURVEY PLANNED TOWN 10-21  
 PLOTTED DRAWN BRIDGE 2170  
 STATE HIGHWAY COMMISSION  
 BRIDGE DIVISION  
**COMBOLASSE BRIDGES**  
 OVER  
**COMBOLASSE STREAM**  
 IN THE TOWN OF  
**LINCOLN**  
 PENNSCOOT COUNTY  
 SURVEY PLAN  
 SHEET 1 OF 4 AUGUST 19, FEB. 1947  
**M-230**

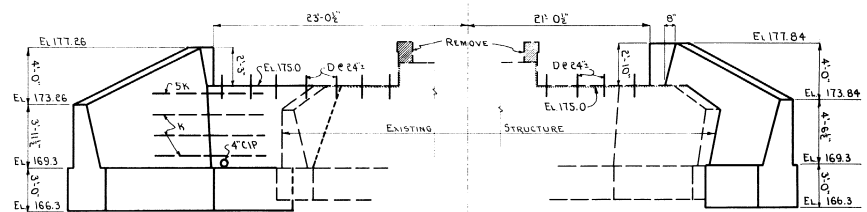


**FRONT ELEVATION**

**ABUTMENT No.1**

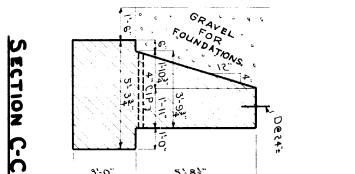


**PLAN - ABUTMENT EXTENSION BRIDGE No.1**

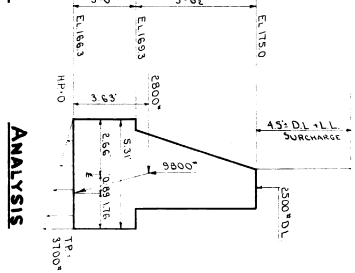


**REAR ELEVATION**

**ABUTMENT No.2**

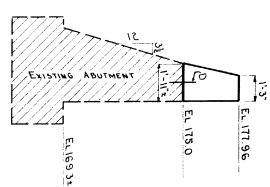


**SECTION C-C**

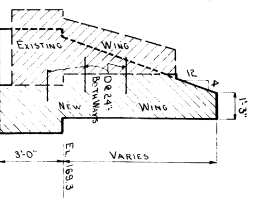


**ANALYSIS**

**SECTION A-A**



**SECTION B-B**



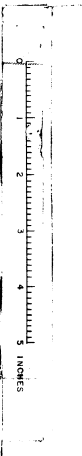
**NOTES-**

- Remove TOPS OF EXISTING WINDS TO EL. 175.0.
- RETEAR BACK OF PARAPETS: SET SLAB NOTE ON SUPERSTRUCTURE SHEET.
- DETAILS OF BOTH ABUTMENTS ARE SIMILAR.
- EXACT LOCATION OF 4\"/>

- SET DOWELS IN ALL CONCRETE SURFACES BETWEEN EXISTING AND NEW WALLS. DOWELS TO EXTEND 9\"/>

- DO NOT REMOVE EXISTING CURBS UNTIL FLASHING HAS BEEN REMOVED FROM ADJOINING SLAB.
- DO NOT REMOVE CURBS BELOW TOP OF EXISTING SLAB - PREFERABLY THEY SHOULD BE LEFT SLIGHTLY HIGHER.

PLAN: 604	BRIDGE: 2110
CONTRACT: 2227	STATE: PENNSYLVANIA
COMBOLASSE BRIDGES	
IN THE TOWN OF LINCOLN COUNTY	
ABUTMENTS - BRIDGE No. 1	
SHEET 2 OF 4	



DATE: 1947  
 DRAWN BY: [Name]  
 CHECKED BY: [Name]  
 PROJECT: [Name]



