

F.S. & A. NO.	STATE	PROJECT NUMBER	SHEET NO.	TOTAL SHEETS
1				

**GENERAL NOTES**

1. Remove existing wearing surface.
2. If mat steel is exposed, concrete should be removed under the steel to a depth of 1" minimum.
3. Blast clean the slab before any placement of bonding grout or concrete. NOTE: SLAB IS TO BE SURFACE DRY BEFORE PLACEMENT OF BONDING GROUT.
4. Broom on a layer of bonding grout just prior to placing concrete. See note this sheet for bonding grout specifications.
5. Concrete to be cured using burlap and water or other approved methods.
6. Concrete to be Class "F" and aggregate to be crushed led-9's.
7. Minimum cover to be 2" unless otherwise noted.
8. Check for all exposed edges 1" unless otherwise noted.

**BONDING GROUT NOTES**

The surface of existing fascia must be thoroughly sandblasted and cleaned to remove all dust or loose materials immediately before bonding grout is applied.

Fascia is to be surface dry when bonding grout is applied.

Bonding grout shall consist of equal parts by weight of Portland Cement and concrete sand with all material cover to removed and mixed with enough water to give a thick, creamy consistency.

Bonding grout to be evenly broomed onto the concrete surface, ensuring that the entire surface is coated and that no excess grout collects in pockets. Grout to be thoroughly broomed under and around reinforcing bars.

Rate of application must be controlled so that that grout does not dry before the new concrete is placed.

**SCOPE OF WORK**

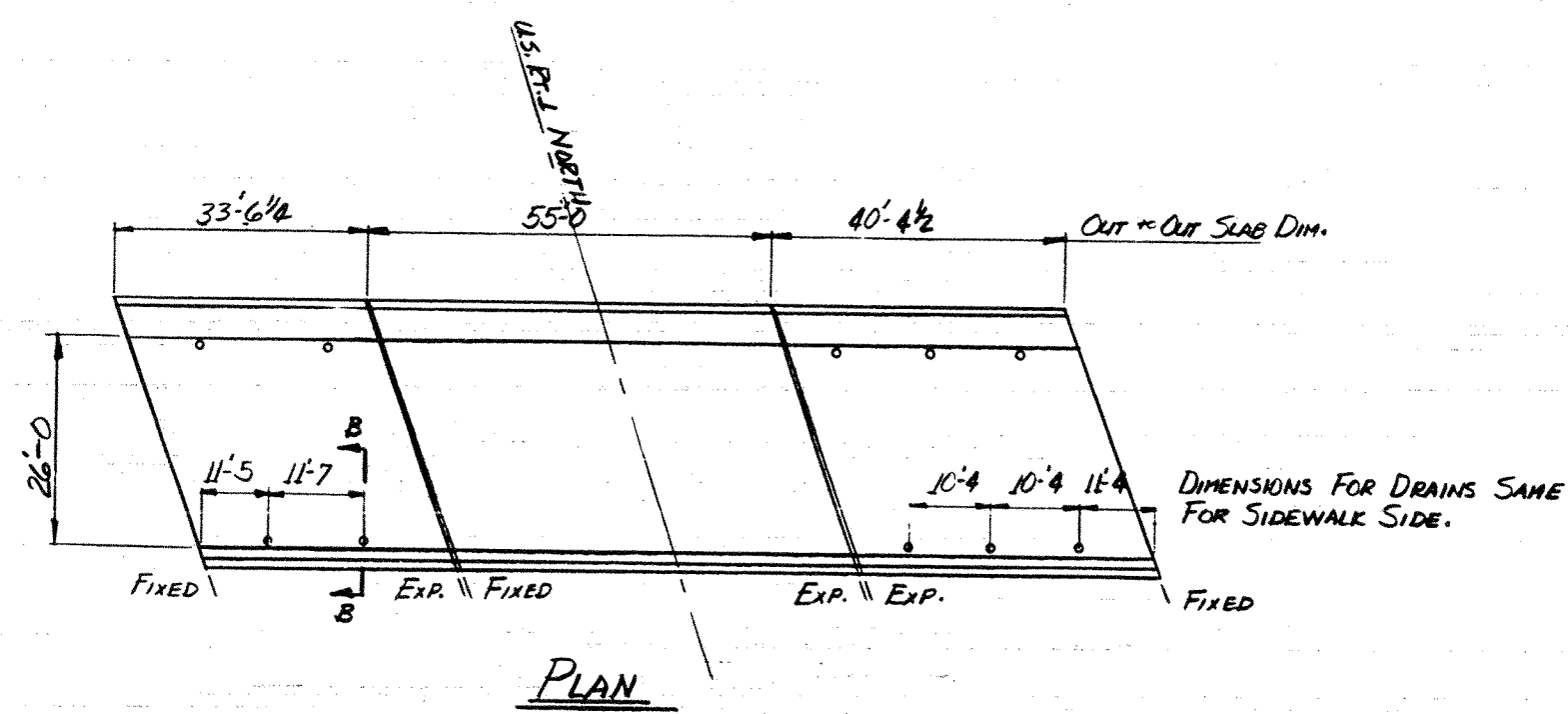
REMOVE EXISTING BIT. CONC. WEARING SURFACE. INSTALL NEW DRAINS AS SHOWN. PLACE NEW 2" BONDED CONCRETE WEARING SURFACE.

**MATERIALS**

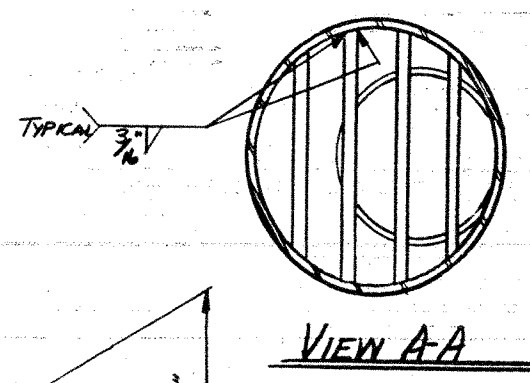
5 REG'D - 10" x 6" x 7" LONG STD. WT. STEEL ECCENTRIC REDUCERS  
33 L.F. ± ~ 6" STD. WT. STEEL PIPE

**CONCRETE EST.**

$$\frac{131 \times 26' \times .25}{27} = 32 \text{ CY.}$$



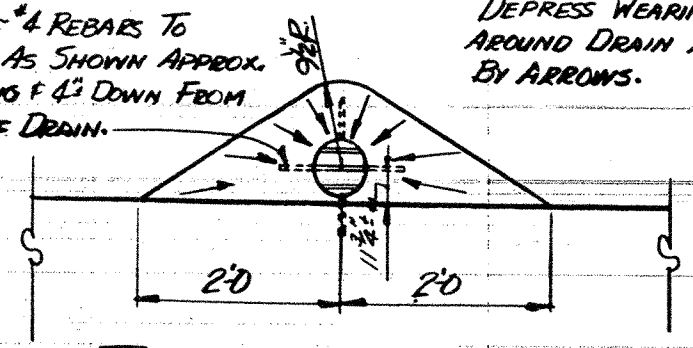
**PLAN**



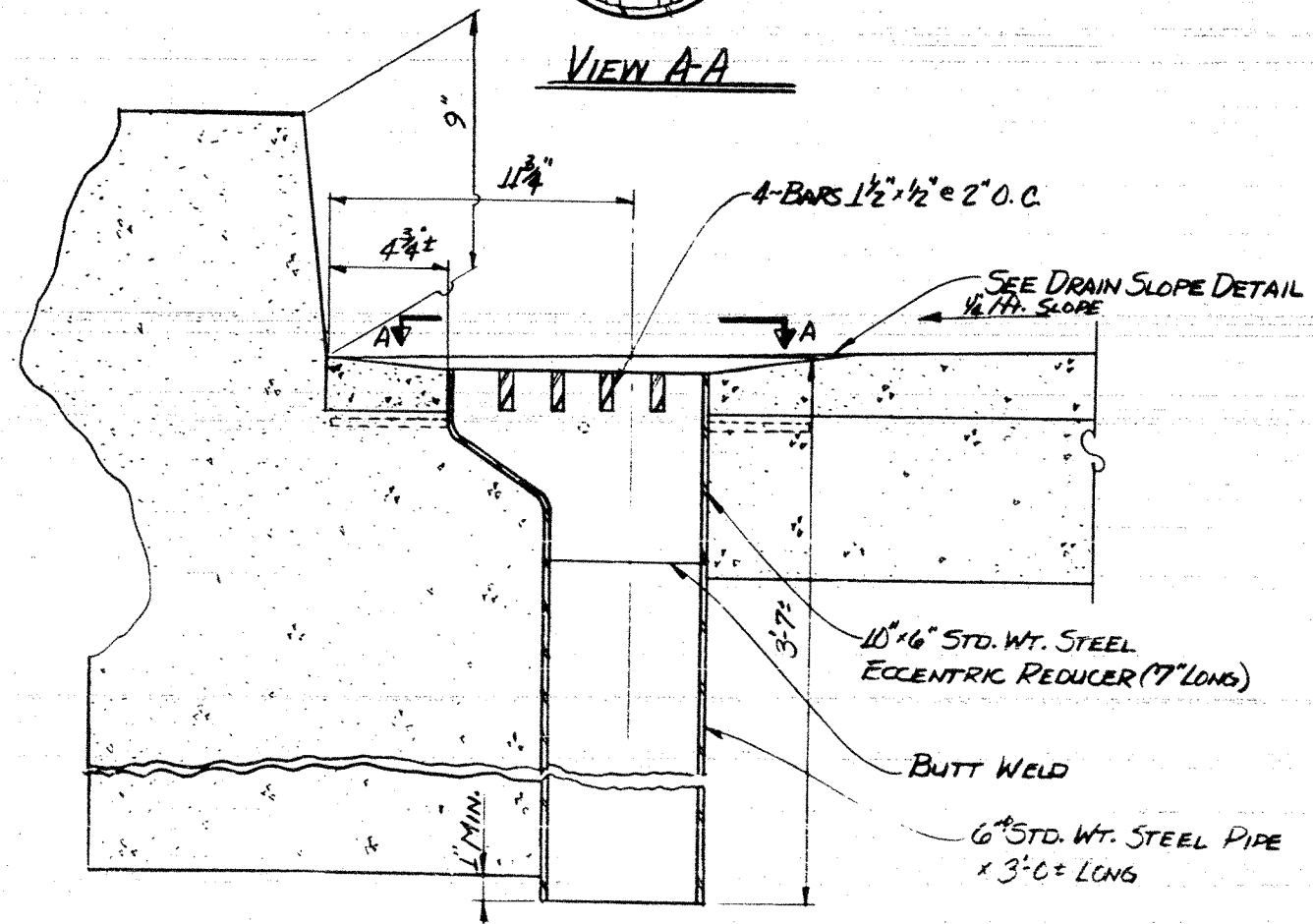
**VIEW A-A**

WELD 4" x 4" REBARS TO DRAINS AS SHOWN APPROX. 1'-6" LONG & 4" DOWN FROM TOP OF DRAIN.

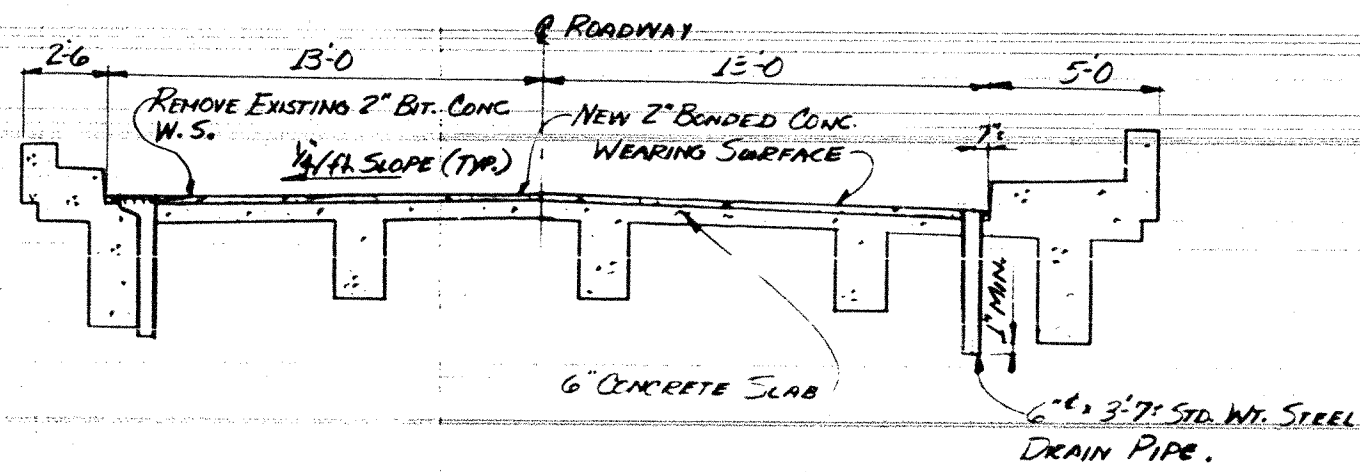
DEPRESS WEARING SURFACE 1/2" AROUND DRAIN AS SHOWN BY ARROWS.



**TYPICAL DRAIN SLOPE DETAIL**



**SECTION B-B**  
@ CURB SIDE ONLY



**TRANSVERSE SECTION**

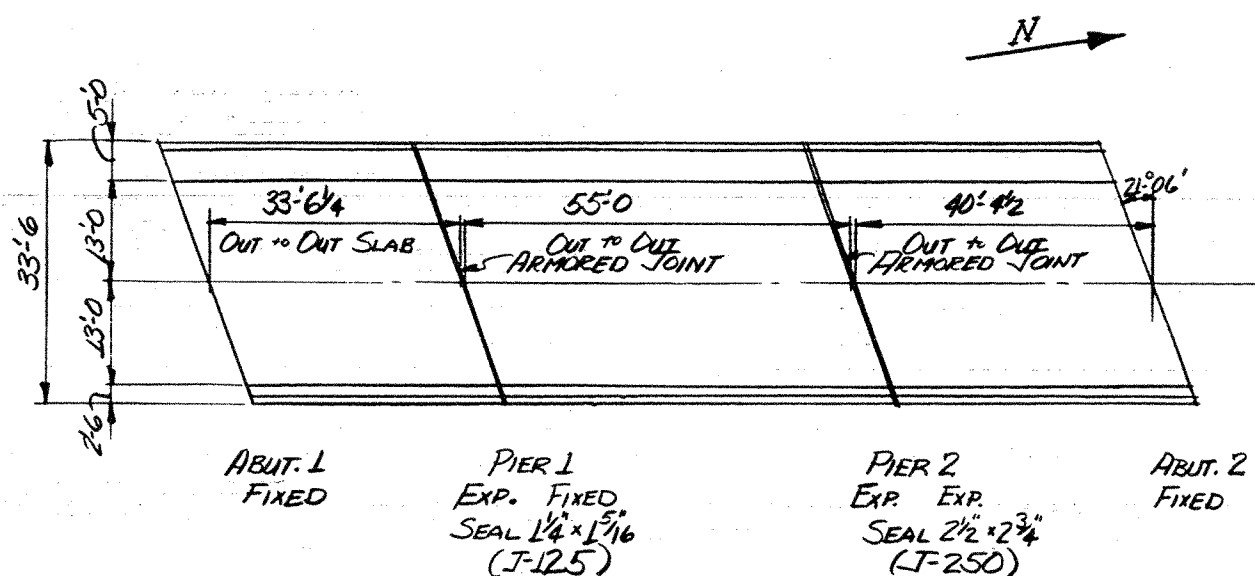
PROJECT DESIGN ENGINEER	DATE
DESIGN - DETAIL	2/2/82
CHECKED	
REVISIONS	
FIELD CHANGE	

PLANS  
DRAWING 66-137-45710-1

STATE OF MAINE  
DEPARTMENT OF TRANSPORTATION  
# 5760  
STOCKTON SPRINGS UNDERPASS  
OVER  
U.S. RT. 1  
IN THE TOWN OF  
STOCKTON SPRINGS  
WALDO COUNTY  
SHEET 3 OF 3 AUGUSTA, MAINE, MAY 9, 1984

96-385

FED. PROJ. NO.	STATE	PROJECT NUMBER	SHEET NO.	TOTAL SHEETS
1				



PLAN

USE W/J-125

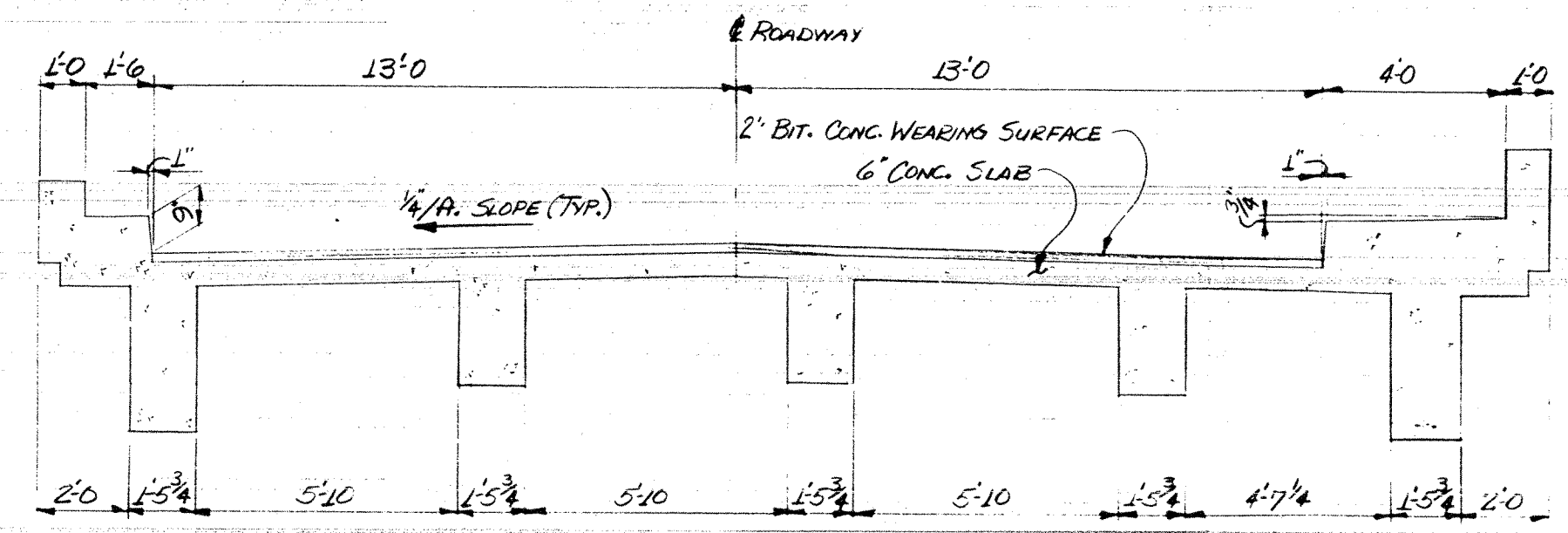
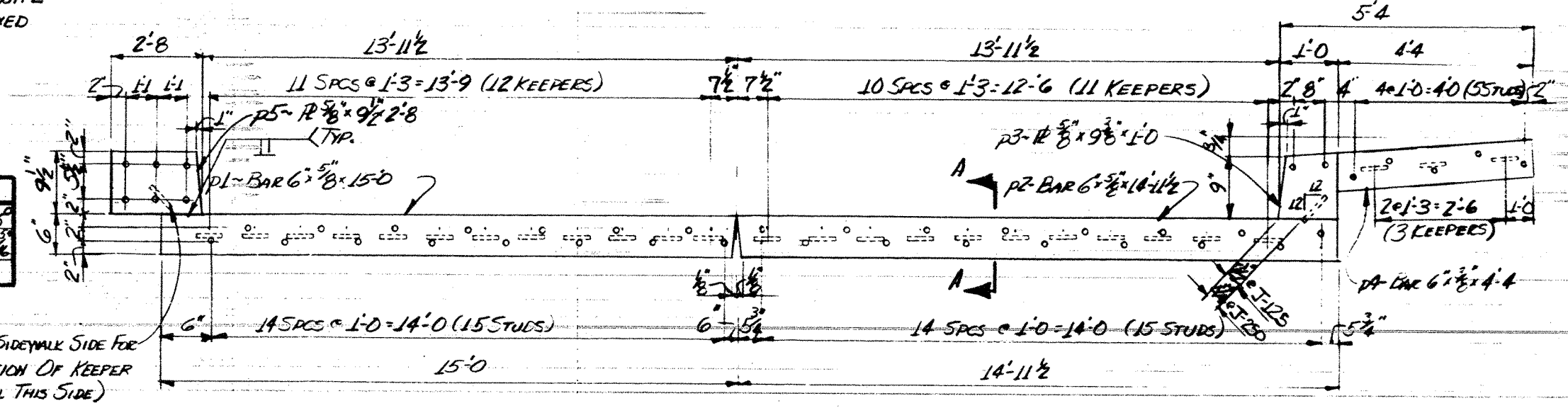
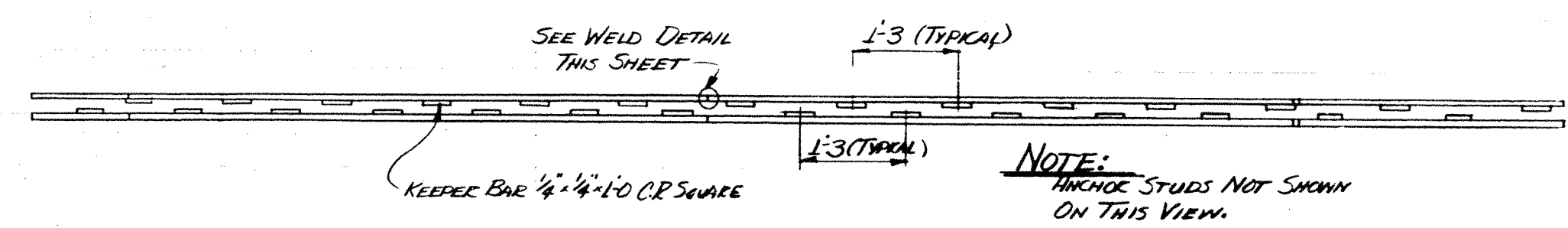
TEMP.	5°	15°	25°	35°	45°	55°	65°	75°	85°
OPENINGS	3/8"	1/2"	5/8"	3/4"	7/8"	1"	1 1/8"	1 1/4"	1 1/2"

\* ALL DIMENSIONS NORMAL TO JOINT

USE W/J-250

TEMP.	5°	15°	25°	35°	45°	55°	65°	75°	85°
OPENINGS	1 1/4"	1 1/2"	1 3/4"	1 7/8"	2"	2 1/8"	2 1/4"	2 1/2"	2 3/4"

\* ALL DIMENSIONS NORMAL TO JOINT



TRANSVERSE SECTION

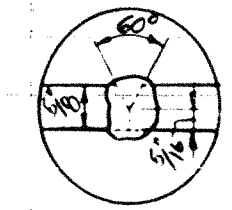
ARMORED JOINT DETAIL  
ONE = PIER 1 (J-125)  
ONE = PIER 2 (J-250)

NOTE:  
SEALS TO BE TURNED DOWN @ EACH END.

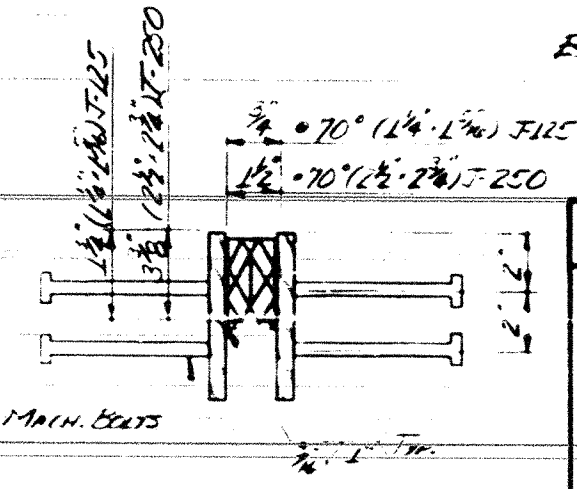
MATERIALS

- ONE REQD - PREFORMED JOINT SEAL 1 1/4" x 1 1/2" x 38'-0" (J-125)
  - ONE REQD - PREFORMED JOINT SEAL 2 1/2" x 2 1/2" x 38'-0" (J-250)
  - P1 - 4 REQD - BAR 6" x 5/8" x 15'-0"
  - P2 - 4 REQD - BAR 6" x 5/8" x 14'-11 1/2"
  - P3 - 4 REQD - BAR 12" x 9/8" x 1'-0"
  - P4 - 4 REQD - BAR 6" x 5/8" x 4'-4"
  - 56 REQD - BAR 1/2" x 1/2" x 1'-0" (K. SQUARE) (KEEPERS)
  - 172 REQD - 1/2" x 6" MACH. BOLTS
  - P5 - 4 REQD - BAR 12" x 9/8" x 2'-8"
- ALL STEEL TO BE A-36.

EST. WT. STEEL: 2,066 LBS.



WELD DETAIL  
FIELD WELD



SECTION A-A

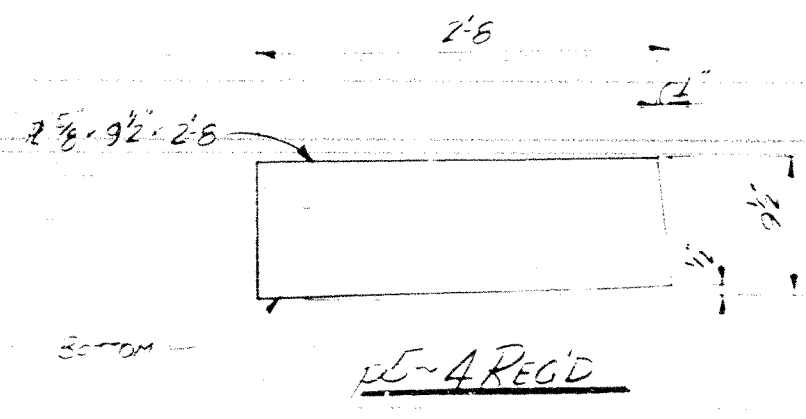
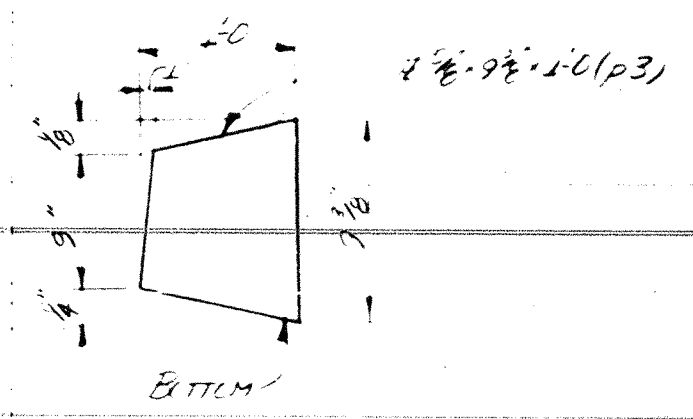
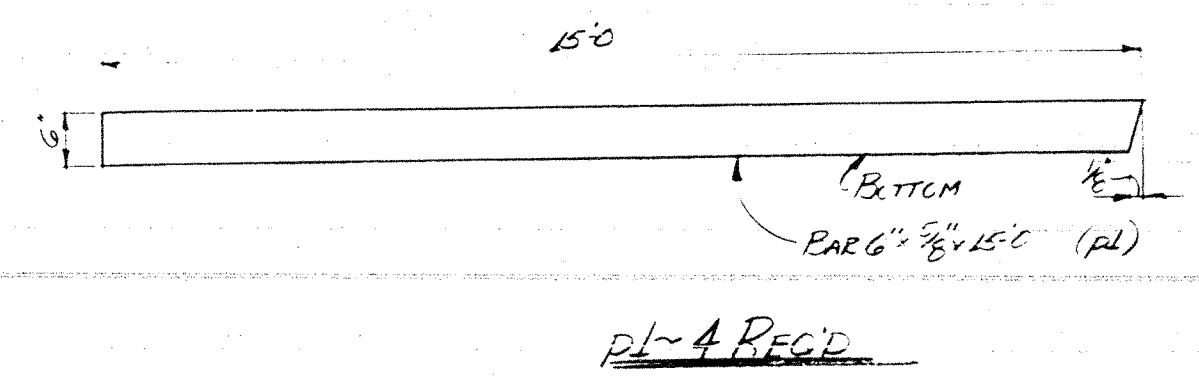
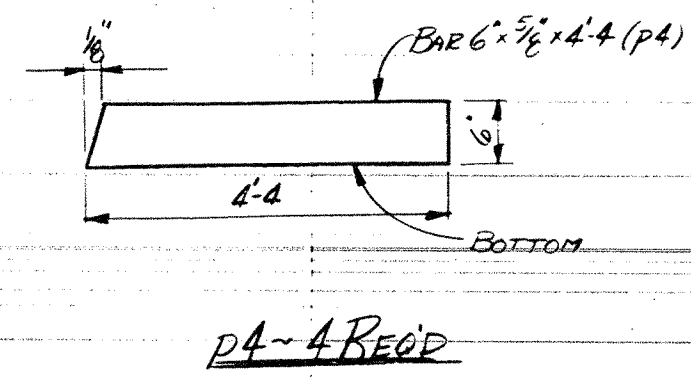
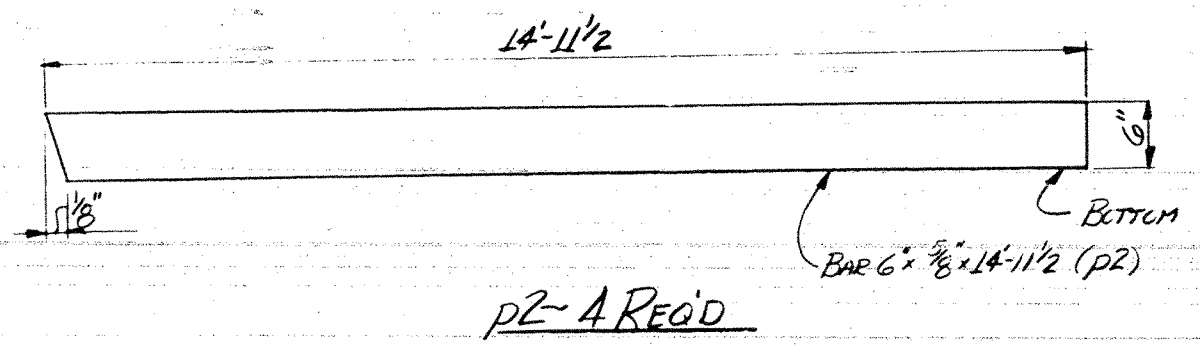
96-386

STATE OF MAINE  
DEPARTMENT OF TRANSPORTATION  
5760  
STOCKTON SPRINGS UNDERPASS  
VEH.  
U.S. RT. 1  
IN THE TOWN OF  
STOCKTON SPRINGS  
IN  
WALDO COUNTY  
SEALS ARMORED JOINTS  
SHEET 2 OF 3 AUGUSTA, MAINE AUG. 1, 1963

PROJECT: MAINE ENGINEER  
DESIGN - DETAILED  
CHECKED  
REVISIONS  
FIELD CHANGES  
DATE: 8-1-63  
PLANS

BRUNING 44 132 48710

FORM NO.	DATE	PROJECT NUMBER	SHEET NO.	TOTAL SHEETS
1				



PROJECT DESIGN ENGINEER	BY	DATE
DESIGN - DETAILED	LD	27-22
REVISIONS		
FIELD CHANGES		

SPRINGER 44 119 42170

STATE OF MAINE  
DEPARTMENT OF TRANSPORTATION  
# 5760  
STATION SIGNAGE INCREASE  
15 KPH  
SLOTTED SIGNAGE  
WALL COUNTY  
MAINE

96-387