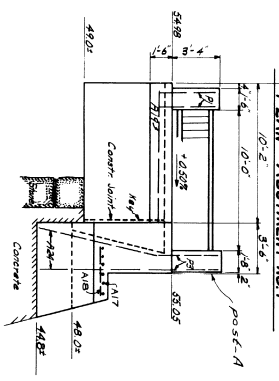
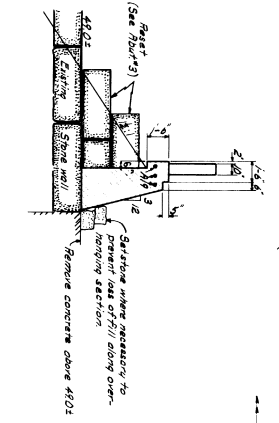


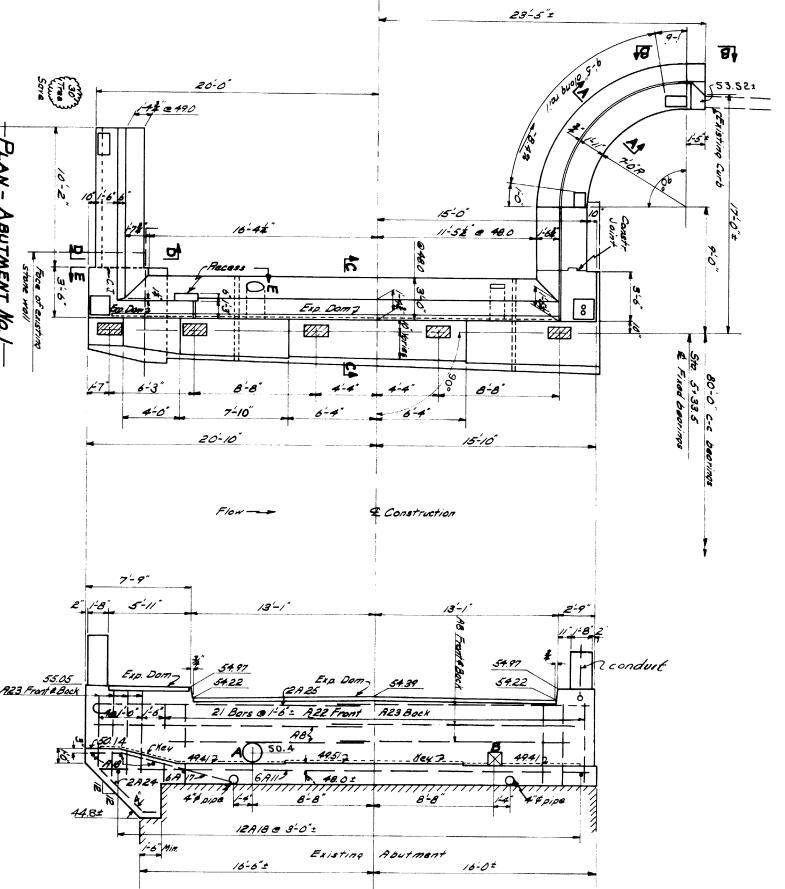
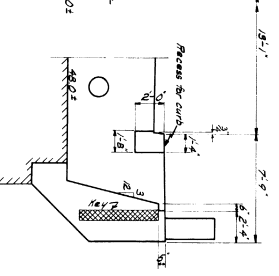
U.S. ELEVATION



SECTION D-D

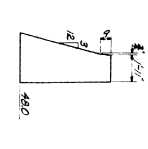


VIEW E-E

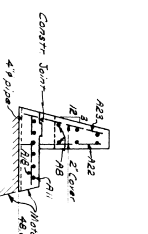


FRONT ELEVATION

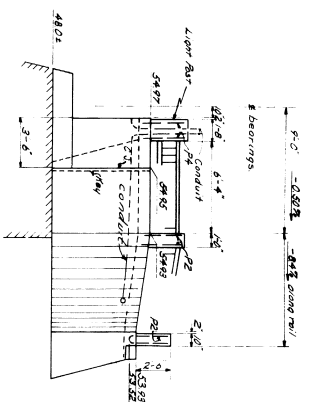
SECTION A-A



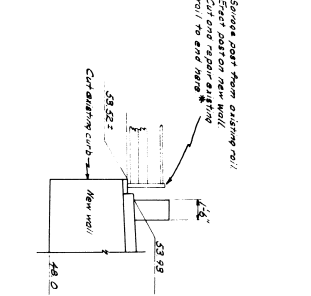
SECTION C-C



D.S. ELEVATION



VIEW B-B



NOTES -  
 See Abutment No. 2  
 See 4011 Details

DESIGN - BRIDGE  
 DRAWN - [Name]  
 CHECKED - [Name]  
 STATE HIGHWAY COMMISSION  
 BRIDGE DIVISION  
 CUMBERLAND MILLS BRIDGE  
 OVER  
 PRESUMPSCOT RIVER  
 IN THE CITY OF  
 WESTBROOK  
 CUMBERLAND COUNTY  
 ABUTMENT NO. 1  
 AUGUSTA, MAINE  
 JAN. 1933  
 SHEET 4 OF 5  
 528.39

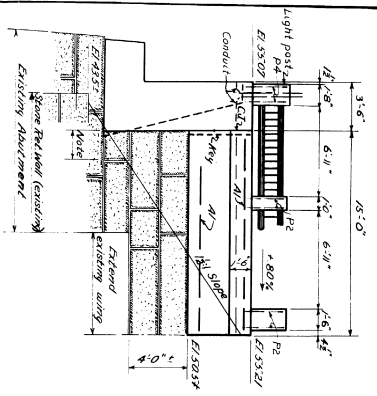
\* Reinforcement for existing wall shall be included under Portland Concrete, Abutments and Retaining Walls

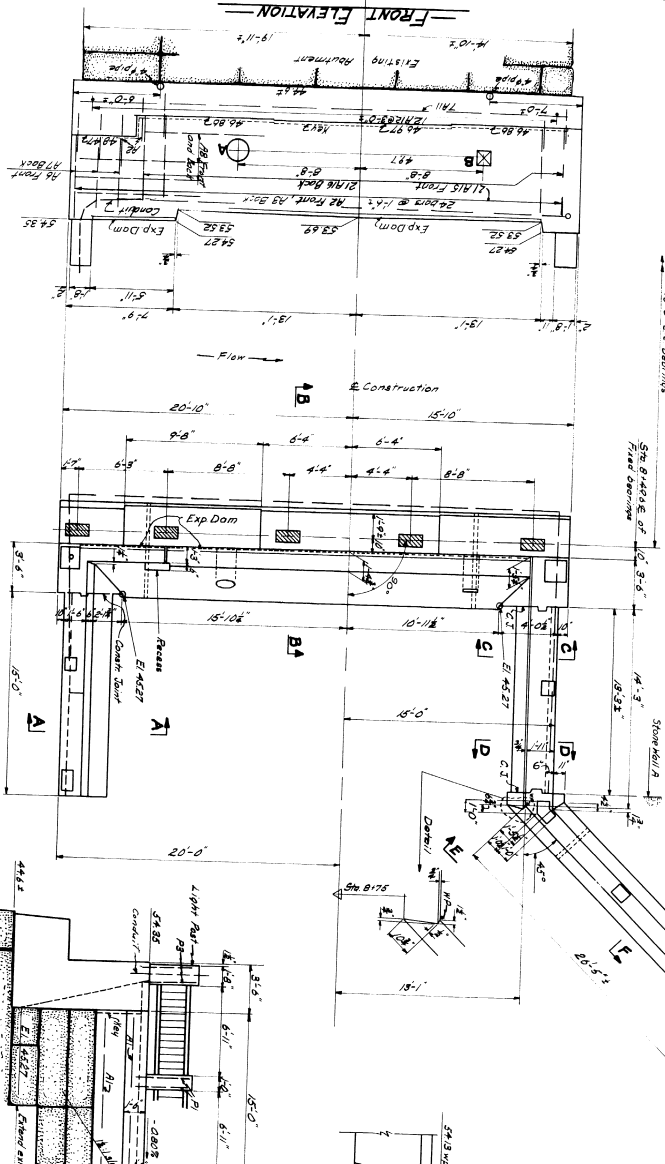
Spreads over from existing wall. Erect against new wall. Cut and open existing wall to give clearance.





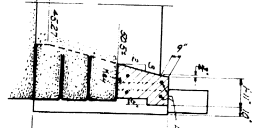
**-DS Elevation-**



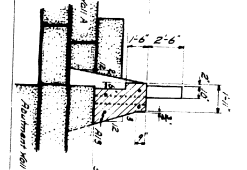


—PLAN— ABUTMENT No. 4 —

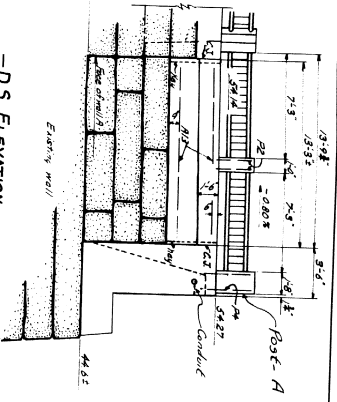
—SECTION C-C—



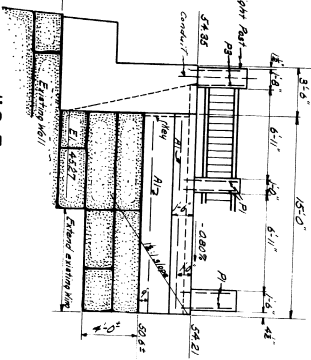
—SECTION D-D—



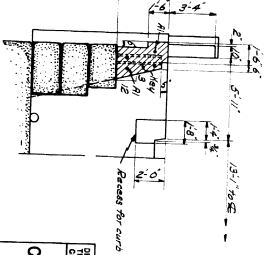
—D.S. ELEVATION—



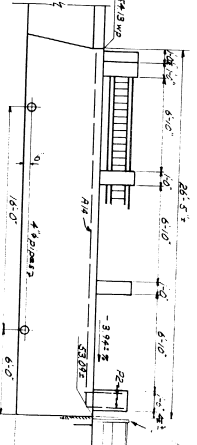
—U.S. ELEVATION—



—SECTION A-A—



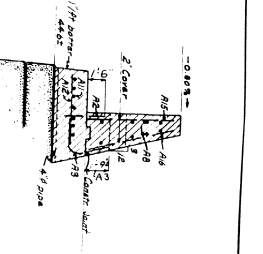
—VIEW E-E—



—SECTION F-F—



—SECTION B-B—



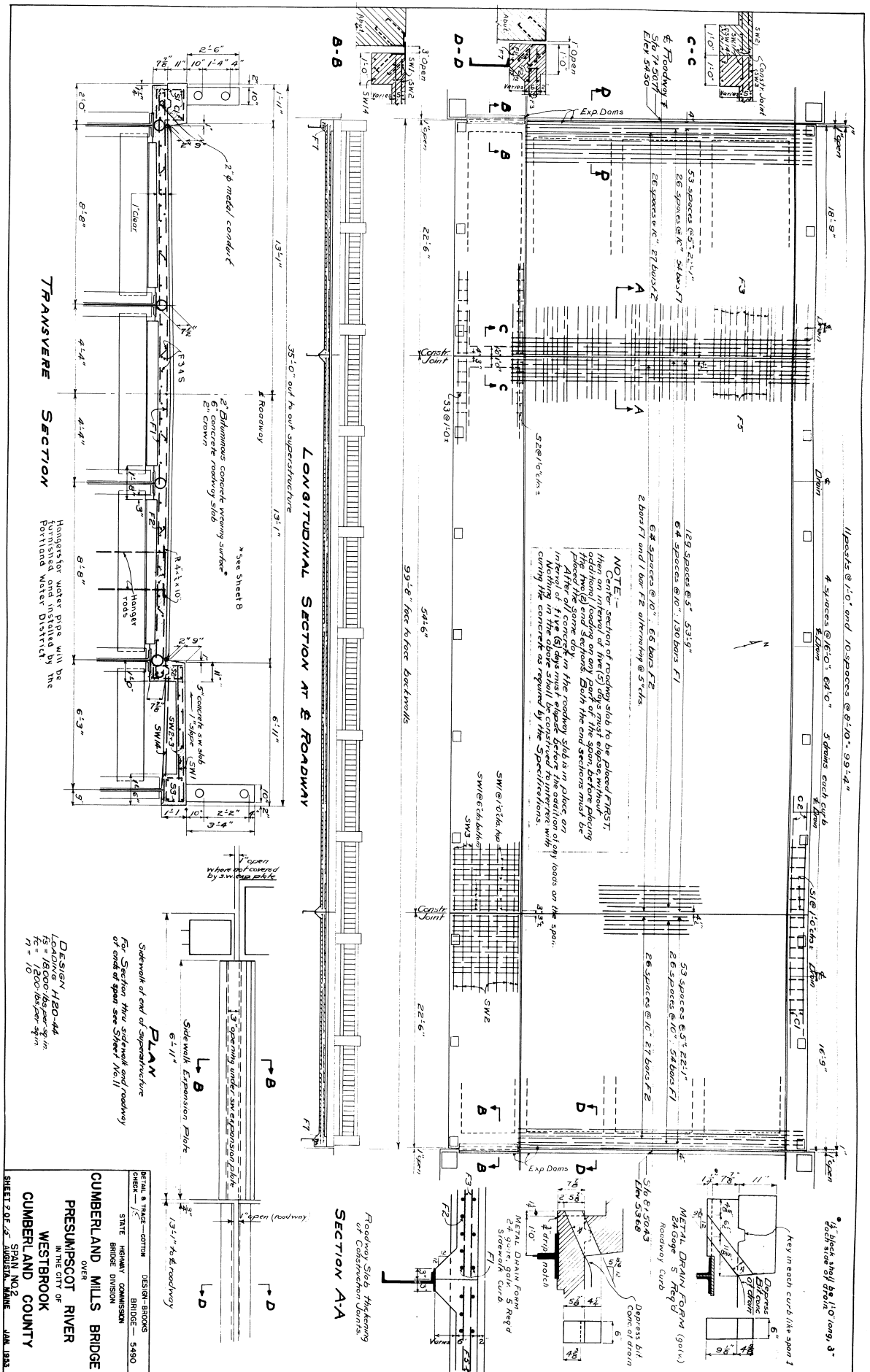
—NOTES—

- 1. See Plans for details.
- 2. See Notes for details.
- 3. See Notes for details.
- 4. See Notes for details.
- 5. See Notes for details.
- 6. See Notes for details.
- 7. See Notes for details.
- 8. See Notes for details.
- 9. See Notes for details.
- 10. See Notes for details.

STATE BRIDGE COMMISSION  
 BRIDGE - 5490  
 CUMBERLAND MILLS BRIDGE  
 OVER  
 PRESUMPSCOT RIVER  
 IN THE CITY OF  
 WESTBROOK  
 CUMBERLAND COUNTY  
 ABUTMENT NO. 4  
 SHEET NO. 2 OF 2  
 AUGUST 1, 1933

58-42

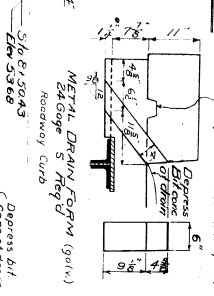




**NOTE** - Section of roadway slab to be placed FIRST, then curbs and sidewalks. Additional loading on any part of the span, before placing the roadway slab, shall be avoided. Both the end sections must be in place at the time the roadway slab is placed. After all concrete in the roadway slab is in place an interval of five (5) days must elapse before the addition of any loads on the span. Working in the above shall be construed to interfere with curing the concrete as required by the Specifications.

159 Spaces @ 3" 53#3  
 68 Spaces @ 10" 130 bars #1  
 68 Spaces @ 10" 54 bars #1  
 2 bar #1 and 1 bar #2 alternating @ 5' c/c

53 Spaces @ 3" 53#3  
 26 Spaces @ 10" 54 bars #1  
 26 Spaces @ 10" 27 bars #2



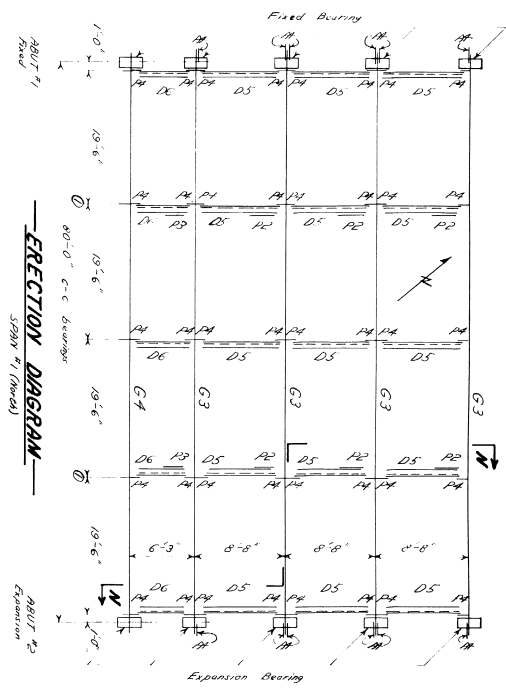
**CUMBERLAND MILLS RIVER**  
**PRESUMPSCOT RIVER**  
**WESTBROOK**  
**CUMBERLAND COUNTY**

DESIGN-BROOKS  
 BRIDGE - 5490  
 STATE HIGHWAY COMMISSION  
 BRIDGE DIVISION  
 IN THE CITY OF  
 WESTBROOK  
 CUMBERLAND COUNTY  
 SPAN NO. 2  
 JAN 1938

Sketch of end of superstructure  
 For Section thru sidewalk and roadway  
 at end of span see Sheet No. 11

DESIGN H20-44  
 LIVE LOAD 18,000 lbs per sq ft  
 WIND 15 = 1,600 lbs per sq ft

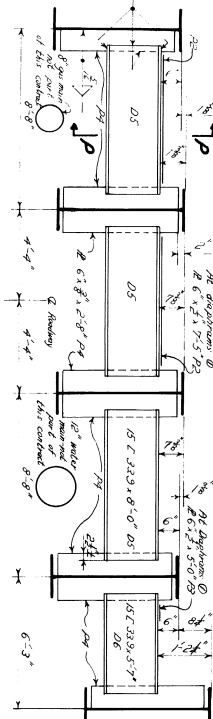




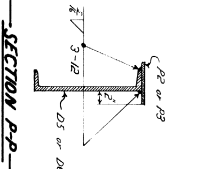
ERECTOR DIAGRAM  
Scale 1/4" = 1'-0"

**LIST OF MATERIALS**

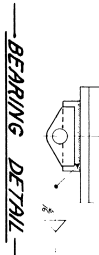
ITEM	QUANTITY	DESCRIPTION	LOCATION	ITEM	QUANTITY	DESCRIPTION	LOCATION
1	1	10" x 10" x 1/2" PL	Abutment #1	1	1	10" x 10" x 1/2" PL	Abutment #2
2	1	10" x 10" x 1/2" PL	Abutment #1	2	2	10" x 10" x 1/2" PL	Abutment #2
3	1	10" x 10" x 1/2" PL	Abutment #1	3	3	10" x 10" x 1/2" PL	Abutment #2
4	1	10" x 10" x 1/2" PL	Abutment #1	4	4	10" x 10" x 1/2" PL	Abutment #2
5	1	10" x 10" x 1/2" PL	Abutment #1	5	5	10" x 10" x 1/2" PL	Abutment #2
6	1	10" x 10" x 1/2" PL	Abutment #1	6	6	10" x 10" x 1/2" PL	Abutment #2
7	1	10" x 10" x 1/2" PL	Abutment #1	7	7	10" x 10" x 1/2" PL	Abutment #2
8	1	10" x 10" x 1/2" PL	Abutment #1	8	8	10" x 10" x 1/2" PL	Abutment #2
9	1	10" x 10" x 1/2" PL	Abutment #1	9	9	10" x 10" x 1/2" PL	Abutment #2
10	1	10" x 10" x 1/2" PL	Abutment #1	10	10	10" x 10" x 1/2" PL	Abutment #2
11	1	10" x 10" x 1/2" PL	Abutment #1	11	11	10" x 10" x 1/2" PL	Abutment #2
12	1	10" x 10" x 1/2" PL	Abutment #1	12	12	10" x 10" x 1/2" PL	Abutment #2
13	1	10" x 10" x 1/2" PL	Abutment #1	13	13	10" x 10" x 1/2" PL	Abutment #2
14	1	10" x 10" x 1/2" PL	Abutment #1	14	14	10" x 10" x 1/2" PL	Abutment #2
15	1	10" x 10" x 1/2" PL	Abutment #1	15	15	10" x 10" x 1/2" PL	Abutment #2
16	1	10" x 10" x 1/2" PL	Abutment #1	16	16	10" x 10" x 1/2" PL	Abutment #2
17	1	10" x 10" x 1/2" PL	Abutment #1	17	17	10" x 10" x 1/2" PL	Abutment #2
18	1	10" x 10" x 1/2" PL	Abutment #1	18	18	10" x 10" x 1/2" PL	Abutment #2
19	1	10" x 10" x 1/2" PL	Abutment #1	19	19	10" x 10" x 1/2" PL	Abutment #2
20	1	10" x 10" x 1/2" PL	Abutment #1	20	20	10" x 10" x 1/2" PL	Abutment #2
21	1	10" x 10" x 1/2" PL	Abutment #1	21	21	10" x 10" x 1/2" PL	Abutment #2
22	1	10" x 10" x 1/2" PL	Abutment #1	22	22	10" x 10" x 1/2" PL	Abutment #2
23	1	10" x 10" x 1/2" PL	Abutment #1	23	23	10" x 10" x 1/2" PL	Abutment #2
24	1	10" x 10" x 1/2" PL	Abutment #1	24	24	10" x 10" x 1/2" PL	Abutment #2
25	1	10" x 10" x 1/2" PL	Abutment #1	25	25	10" x 10" x 1/2" PL	Abutment #2
26	1	10" x 10" x 1/2" PL	Abutment #1	26	26	10" x 10" x 1/2" PL	Abutment #2
27	1	10" x 10" x 1/2" PL	Abutment #1	27	27	10" x 10" x 1/2" PL	Abutment #2
28	1	10" x 10" x 1/2" PL	Abutment #1	28	28	10" x 10" x 1/2" PL	Abutment #2
29	1	10" x 10" x 1/2" PL	Abutment #1	29	29	10" x 10" x 1/2" PL	Abutment #2
30	1	10" x 10" x 1/2" PL	Abutment #1	30	30	10" x 10" x 1/2" PL	Abutment #2
31	1	10" x 10" x 1/2" PL	Abutment #1	31	31	10" x 10" x 1/2" PL	Abutment #2
32	1	10" x 10" x 1/2" PL	Abutment #1	32	32	10" x 10" x 1/2" PL	Abutment #2
33	1	10" x 10" x 1/2" PL	Abutment #1	33	33	10" x 10" x 1/2" PL	Abutment #2
34	1	10" x 10" x 1/2" PL	Abutment #1	34	34	10" x 10" x 1/2" PL	Abutment #2
35	1	10" x 10" x 1/2" PL	Abutment #1	35	35	10" x 10" x 1/2" PL	Abutment #2
36	1	10" x 10" x 1/2" PL	Abutment #1	36	36	10" x 10" x 1/2" PL	Abutment #2
37	1	10" x 10" x 1/2" PL	Abutment #1	37	37	10" x 10" x 1/2" PL	Abutment #2
38	1	10" x 10" x 1/2" PL	Abutment #1	38	38	10" x 10" x 1/2" PL	Abutment #2
39	1	10" x 10" x 1/2" PL	Abutment #1	39	39	10" x 10" x 1/2" PL	Abutment #2
40	1	10" x 10" x 1/2" PL	Abutment #1	40	40	10" x 10" x 1/2" PL	Abutment #2
41	1	10" x 10" x 1/2" PL	Abutment #1	41	41	10" x 10" x 1/2" PL	Abutment #2
42	1	10" x 10" x 1/2" PL	Abutment #1	42	42	10" x 10" x 1/2" PL	Abutment #2
43	1	10" x 10" x 1/2" PL	Abutment #1	43	43	10" x 10" x 1/2" PL	Abutment #2
44	1	10" x 10" x 1/2" PL	Abutment #1	44	44	10" x 10" x 1/2" PL	Abutment #2
45	1	10" x 10" x 1/2" PL	Abutment #1	45	45	10" x 10" x 1/2" PL	Abutment #2
46	1	10" x 10" x 1/2" PL	Abutment #1	46	46	10" x 10" x 1/2" PL	Abutment #2
47	1	10" x 10" x 1/2" PL	Abutment #1	47	47	10" x 10" x 1/2" PL	Abutment #2
48	1	10" x 10" x 1/2" PL	Abutment #1	48	48	10" x 10" x 1/2" PL	Abutment #2
49	1	10" x 10" x 1/2" PL	Abutment #1	49	49	10" x 10" x 1/2" PL	Abutment #2
50	1	10" x 10" x 1/2" PL	Abutment #1	50	50	10" x 10" x 1/2" PL	Abutment #2



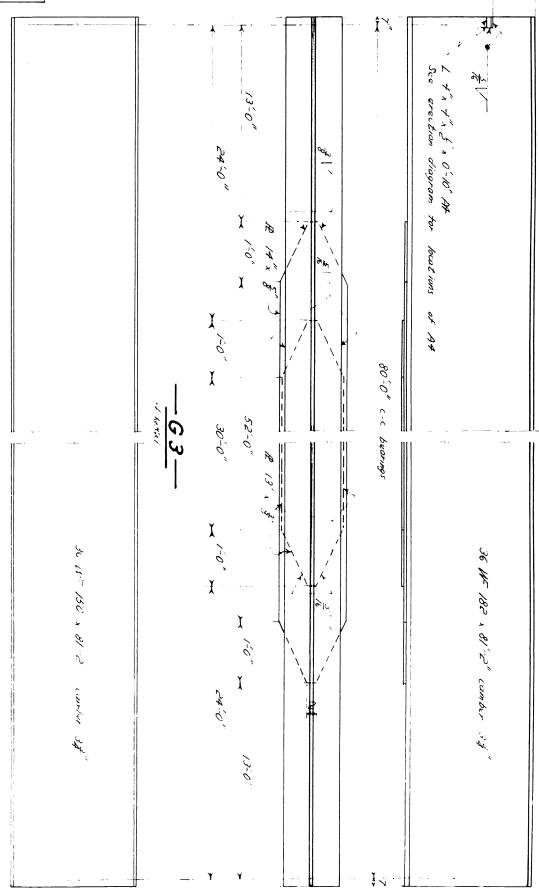
SECTION N-N



SECTION P-P



BEARING DETAIL



G1

G3

NOTE: For submittal expansion joints see sheet #11.

NOTE: Expansion and fixed bearings shown for this span in the same way. See sheet #11.

Erection shall conform to State of Maine, State Highway Commission, Standard Specifications, Revision of May 1933.

Specifications: Highway Steel Highway Commission Bridge Division, Street Highway Bridges, November 1944, 12-14-1940 a.s.c.

Scaling: H-20-44

DESIGN BY: [Name]

CHECKED BY: [Name]

STATE HIGHWAY COMMISSION

CUMBERLAND MILLS BRIDGE

PRESUMPSCOT RIVER

IN THE CITY OF WESTBROOK

CUMBERLAND COUNTY

STRUCTURAL STEEL SPAN #1

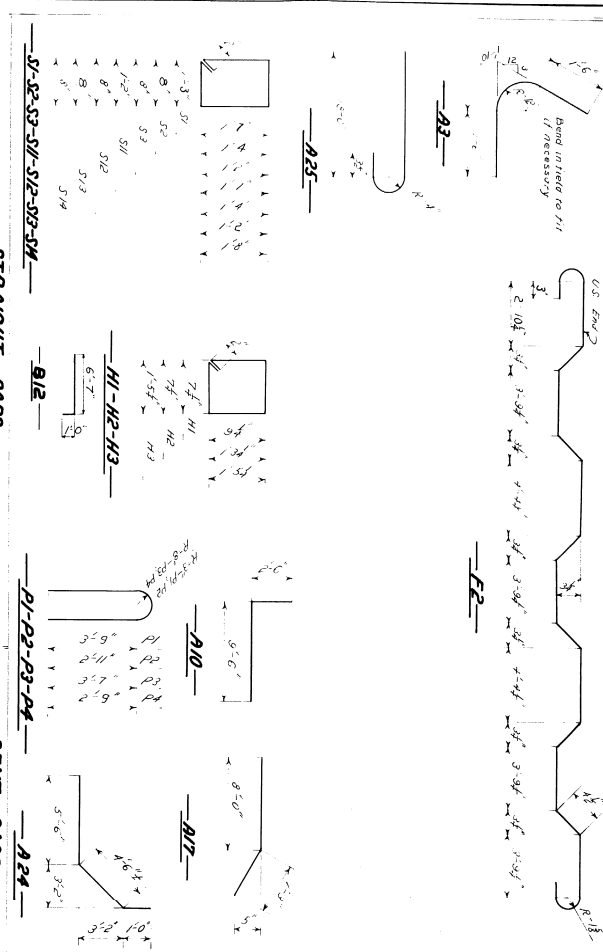
SHEET 20 OF 25 AUGUSTA, MAINE

JUN. 1933



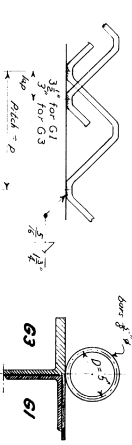
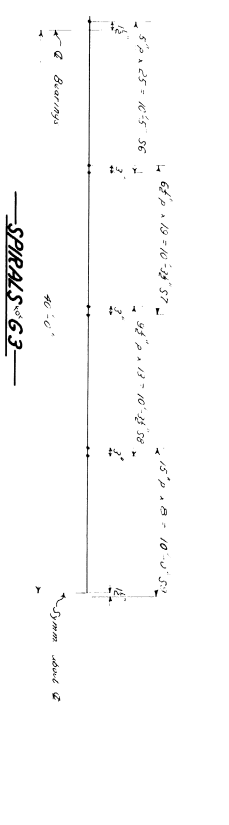
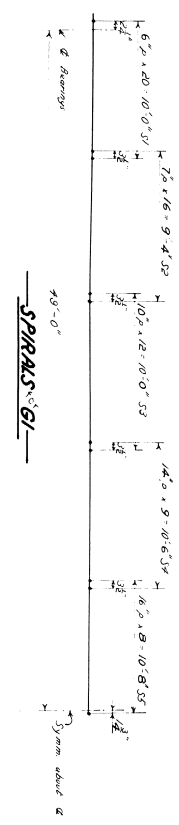


**REINFORCING STEEL**



STRAIGHT BARS		BENT BARS	
Mark Size No	Length	Mark Size No	Length
A1	8 1/2"	A1	8 1/2"
A2	8 1/2"	A2	8 1/2"
A3	8 1/2"	A3	8 1/2"
A4	8 1/2"	A4	8 1/2"
A5	8 1/2"	A5	8 1/2"
A6	8 1/2"	A6	8 1/2"
A7	8 1/2"	A7	8 1/2"
A8	8 1/2"	A8	8 1/2"
A9	8 1/2"	A9	8 1/2"
A10	8 1/2"	A10	8 1/2"
A11	8 1/2"	A11	8 1/2"
A12	8 1/2"	A12	8 1/2"
A13	8 1/2"	A13	8 1/2"
A14	8 1/2"	A14	8 1/2"
A15	8 1/2"	A15	8 1/2"
A16	8 1/2"	A16	8 1/2"
A17	8 1/2"	A17	8 1/2"
A18	8 1/2"	A18	8 1/2"
A19	8 1/2"	A19	8 1/2"
A20	8 1/2"	A20	8 1/2"
A21	8 1/2"	A21	8 1/2"
A22	8 1/2"	A22	8 1/2"
A23	8 1/2"	A23	8 1/2"
A24	8 1/2"	A24	8 1/2"

NOTE: Dimensions to 1/8 of inch

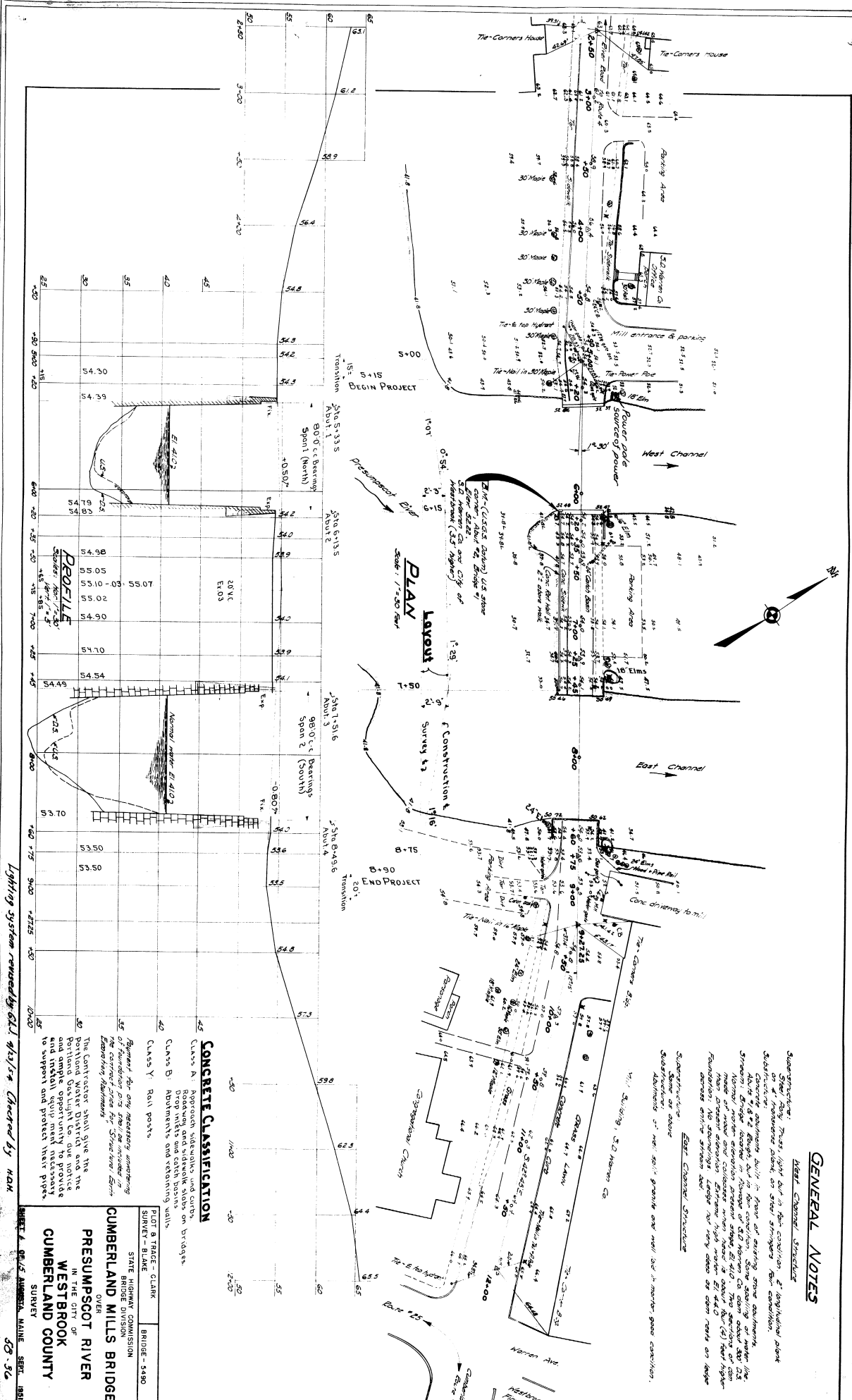


SPIRAL SECTION	NO.	REINFORCING
61	8	8
62	8	8
63	8	8
64	8	8
65	8	8
66	8	8
67	8	8
68	8	8
69	8	8
70	8	8

REGION - BROOKS, COTTENBALEN  
 STATE HIGHWAY COMMISSION  
 BRIDGE DIVISION  
 CUMBERLAND MILLS BRIDGE  
 PRESUMPSCOT RIVER  
 WESTBROOK  
 CUMBERLAND COUNTY  
 REINFORCING STEEL & SPIRALS  
 SHEET 23 OF 25 AUGUST, 1933







**GENERAL NOTES**

**West Channel Structure**  
 Superstructure: Stone or concrete  
 Substructure: Stone or concrete  
 Mill Building: 320' x 100' x 10'  
 The Corners House: 200' x 100' x 10'  
 The Power Pole: 100' x 100' x 10'  
 Mill entrance & parking: 100' x 100' x 10'  
 The Corners House: 200' x 100' x 10'  
 The Power Pole: 100' x 100' x 10'  
 Mill entrance & parking: 100' x 100' x 10'

**CONCRETE CLASSIFICATION**

- 45 Class A: Approach sidewalks and curbs. Roadway and sidewalk slabs on bridges. Admixtures and reinforcing shall.
- 40 Class Y: Rail points.

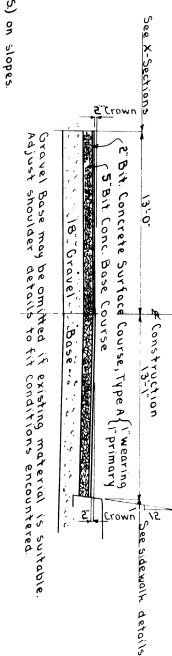
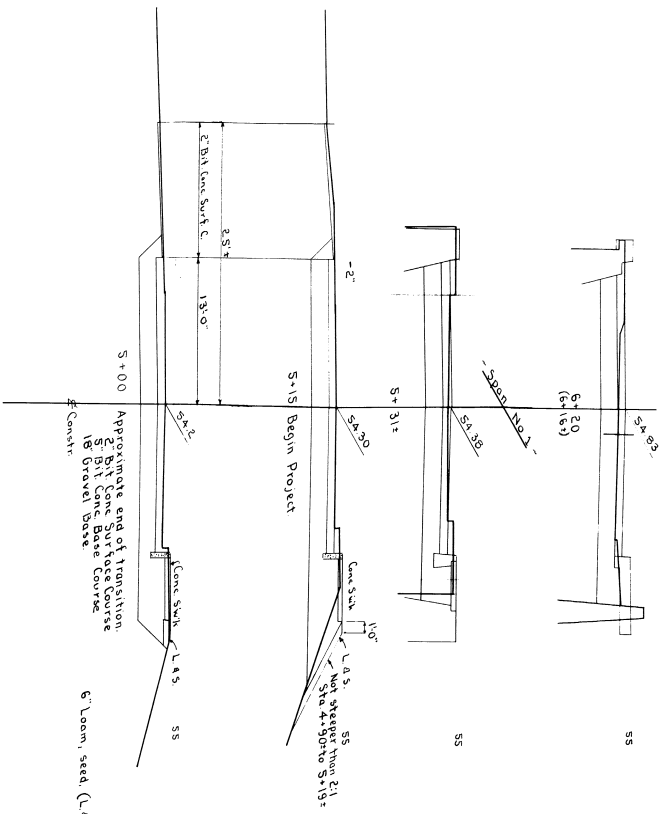
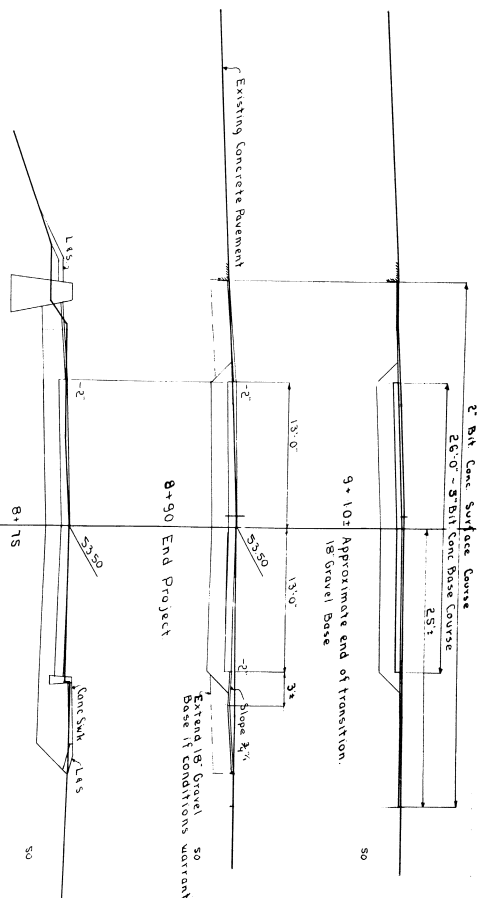
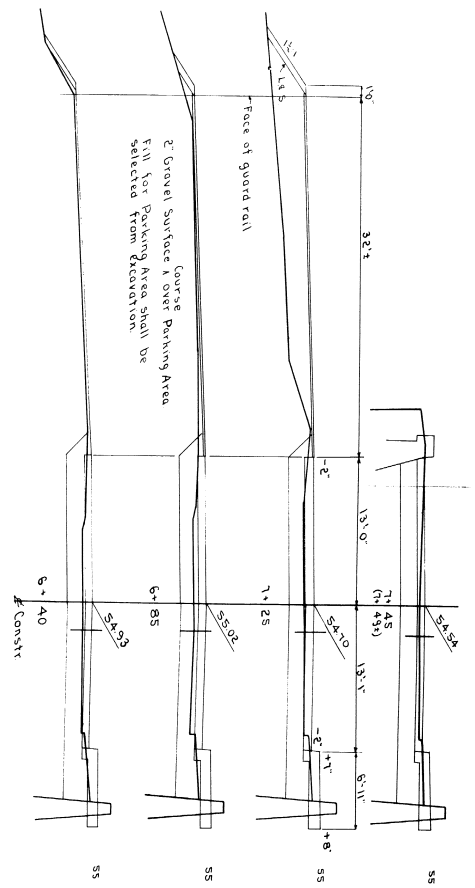
45 **REINFORCING**  
 Reinforcing steel shall be furnished by the contractor and shall conform to the requirements of the American Institute of Steel Construction, Inc. Specification for Reinforcing Steel Bars, 1989 Edition.

BRIDGE - 3490  
 STATE HIGHWAY COMMISSION  
 CUMBERLAND MILLS BRIDGE  
 PRESUMPSCOT RIVER  
 IN THE CITY OF  
 WESTBROOK  
 CUMBERLAND COUNTY  
 SURVEY  
 88-26

Lighting system recommended by G.L. Heston, Checked by MAM





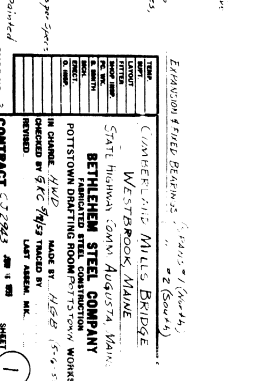
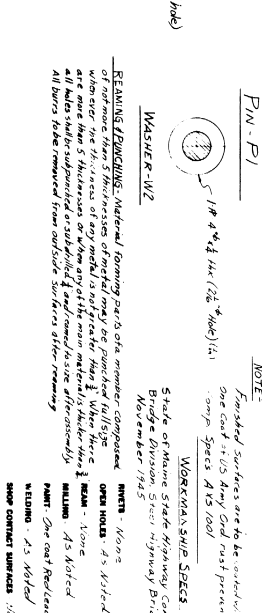
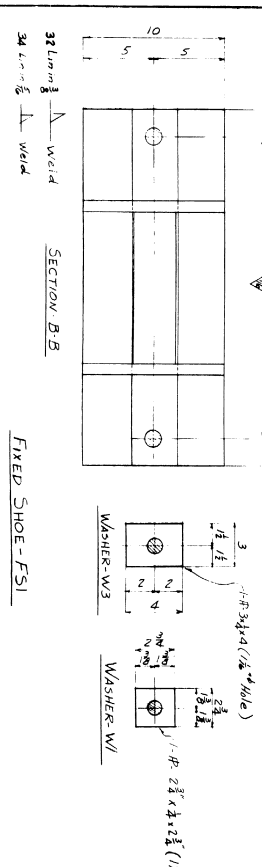
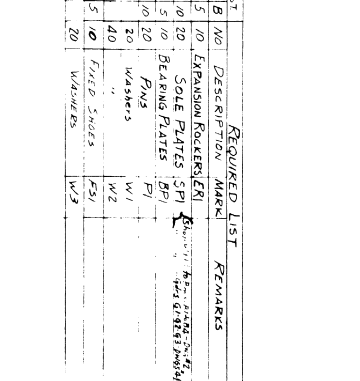
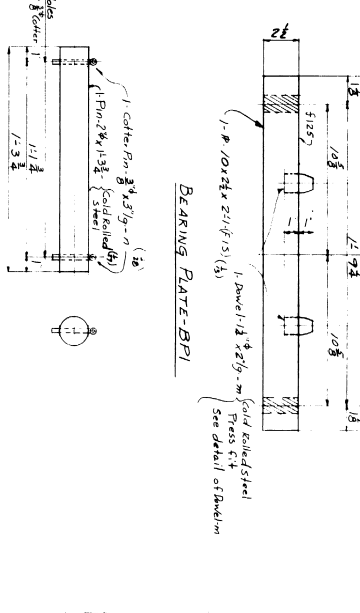
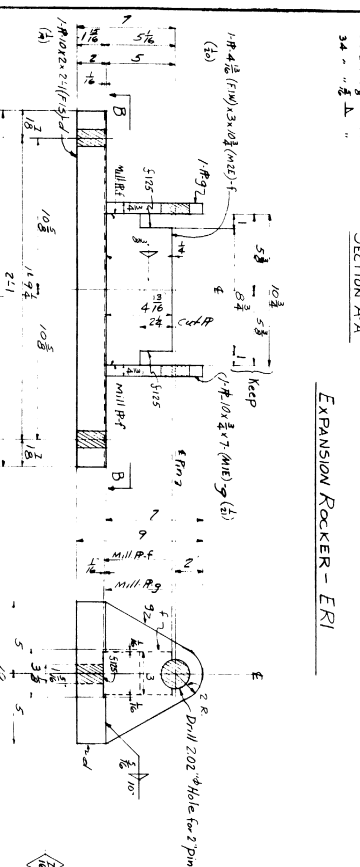
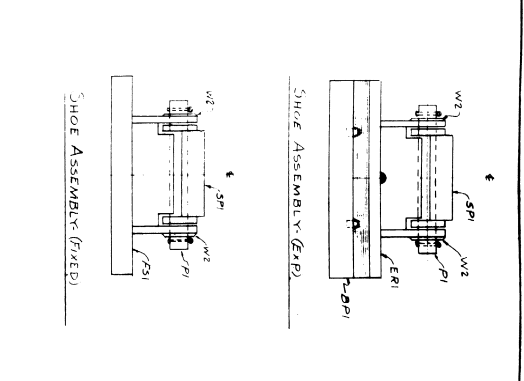
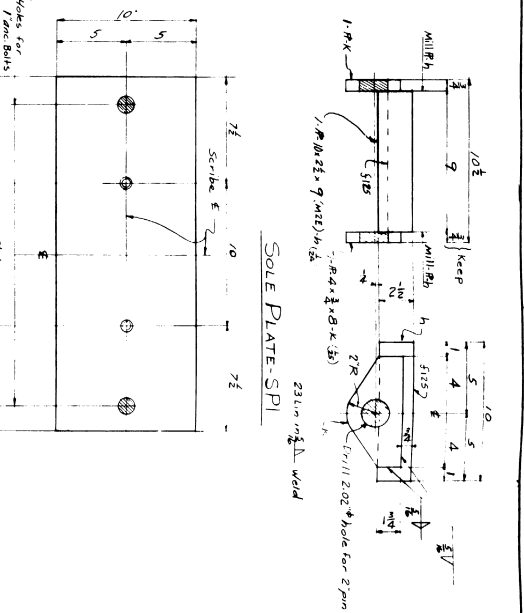
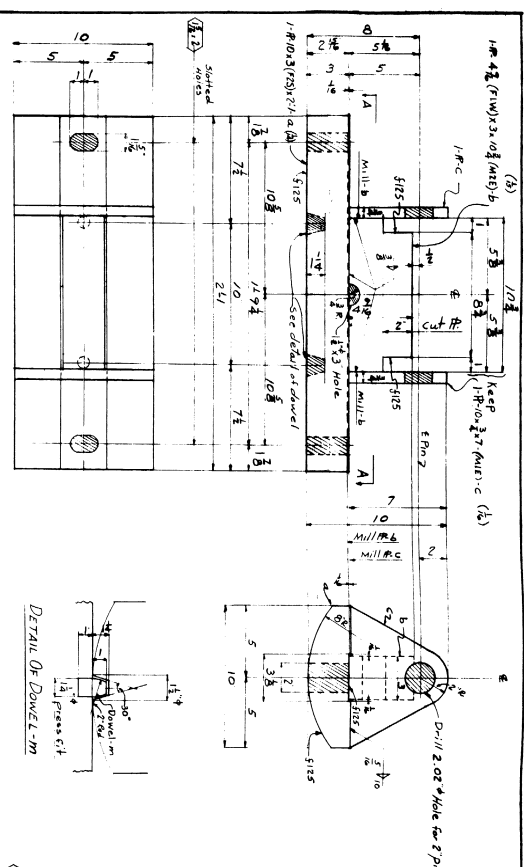


**TYPICAL SECTION**

PLAN - BRIDGES  
 STATE HIGHWAY COMMISSION  
 BRIDGE DIVISION  
 CUMBERLAND MILLS BRIDGE  
 OVER  
 PRESUMPSCOT RIVER  
 IN THE CITY OF  
 WESTBROOK  
 CUMBERLAND COUNTY  
 CROSS-SECTIONS  
 SHEET 2 OF 25  
 AUGUSTA, MAINE  
 JAN. 1933







NO.	DESCRIPTION	MARK	REMARKS
A	EXPANSION ROCKER	ERI	
B	SOLE PLATE	SPI	
C	BEARING PLATE	BPI	
D	WASHERS	W1, W2, W3, W4	
E	FIXED SHOE	FSI	
F	WASHERS	W3, W4	

**NOTE:**  
 Finished surfaces are to be indicated by one coat of US Army Std. rust prevention comp. Spec. A15 1001.

**WORKMANSHIP SPECS:**  
 State of Maine State Highway Comm. Bridge Division, State Highway Bridges, North Ferris 1915.

**MATERIALS:**  
 None - None  
 ORDER INQUIRY: As noted  
 PAINT: One coat Red Oxide epoxy primer  
 FINISHING: As noted  
 SHOP FINISH SURFACES: Mill pointed

**EXPANSION ROLLER BEARING (E.R.B.)**  
 (1) 1/4" x 1/2" x 1/2" (1/2" hole)  
 (2) 1/4" x 1/2" x 1/2" (1/2" hole)  
 (3) 1/4" x 1/2" x 1/2" (1/2" hole)  
 (4) 1/4" x 1/2" x 1/2" (1/2" hole)  
 (5) 1/4" x 1/2" x 1/2" (1/2" hole)  
 (6) 1/4" x 1/2" x 1/2" (1/2" hole)  
 (7) 1/4" x 1/2" x 1/2" (1/2" hole)  
 (8) 1/4" x 1/2" x 1/2" (1/2" hole)  
 (9) 1/4" x 1/2" x 1/2" (1/2" hole)  
 (10) 1/4" x 1/2" x 1/2" (1/2" hole)  
 (11) 1/4" x 1/2" x 1/2" (1/2" hole)  
 (12) 1/4" x 1/2" x 1/2" (1/2" hole)  
 (13) 1/4" x 1/2" x 1/2" (1/2" hole)  
 (14) 1/4" x 1/2" x 1/2" (1/2" hole)  
 (15) 1/4" x 1/2" x 1/2" (1/2" hole)  
 (16) 1/4" x 1/2" x 1/2" (1/2" hole)  
 (17) 1/4" x 1/2" x 1/2" (1/2" hole)  
 (18) 1/4" x 1/2" x 1/2" (1/2" hole)  
 (19) 1/4" x 1/2" x 1/2" (1/2" hole)  
 (20) 1/4" x 1/2" x 1/2" (1/2" hole)

**REQUIREMENTS:**  
 1. Expansion Roller Bearing (E.R.B.)  
 2. Sole Plate (SPI)  
 3. Bearing Plate (BPI)  
 4. Washers (W1, W2, W3, W4)  
 5. Fixed Shoe (FSI)  
 6. Washers (W3, W4)

**REVISIONS:**  
 1. 1/4" x 1/2" x 1/2" (1/2" hole)  
 2. 1/4" x 1/2" x 1/2" (1/2" hole)  
 3. 1/4" x 1/2" x 1/2" (1/2" hole)  
 4. 1/4" x 1/2" x 1/2" (1/2" hole)  
 5. 1/4" x 1/2" x 1/2" (1/2" hole)  
 6. 1/4" x 1/2" x 1/2" (1/2" hole)  
 7. 1/4" x 1/2" x 1/2" (1/2" hole)  
 8. 1/4" x 1/2" x 1/2" (1/2" hole)  
 9. 1/4" x 1/2" x 1/2" (1/2" hole)  
 10. 1/4" x 1/2" x 1/2" (1/2" hole)  
 11. 1/4" x 1/2" x 1/2" (1/2" hole)  
 12. 1/4" x 1/2" x 1/2" (1/2" hole)  
 13. 1/4" x 1/2" x 1/2" (1/2" hole)  
 14. 1/4" x 1/2" x 1/2" (1/2" hole)  
 15. 1/4" x 1/2" x 1/2" (1/2" hole)  
 16. 1/4" x 1/2" x 1/2" (1/2" hole)  
 17. 1/4" x 1/2" x 1/2" (1/2" hole)  
 18. 1/4" x 1/2" x 1/2" (1/2" hole)  
 19. 1/4" x 1/2" x 1/2" (1/2" hole)  
 20. 1/4" x 1/2" x 1/2" (1/2" hole)

**CONTRACT:** C-7283  
**DATE:** JAN 1 1960  
**SHEET:** 1

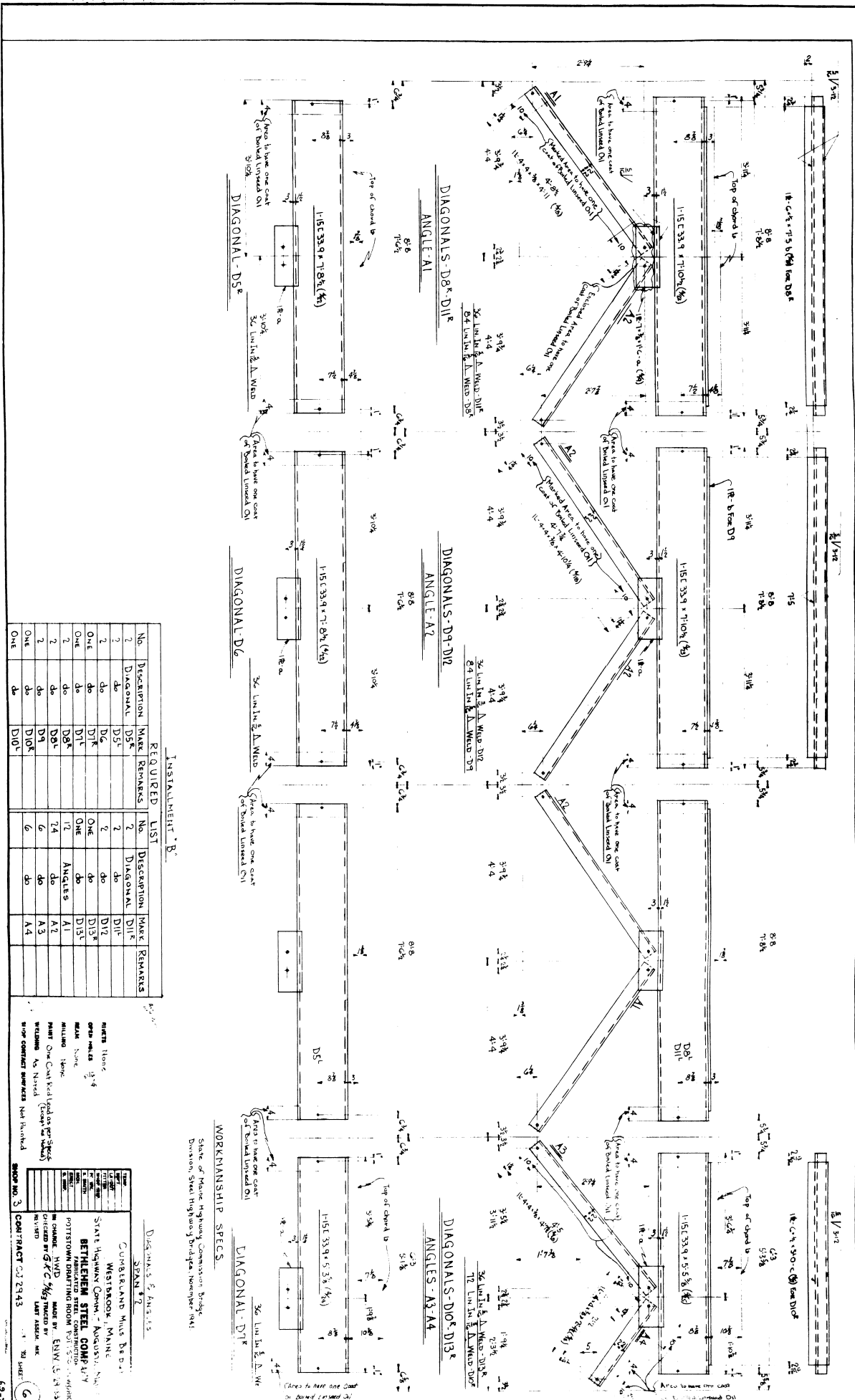
**69-70**











DIAGONALS - D8<sup>1</sup> D11<sup>1</sup>  
ANGLE - A1

DIAGONALS - D8<sup>2</sup> D11<sup>2</sup>  
ANGLE - A2

DIAGONALS - D9<sup>1</sup> D12<sup>1</sup>  
ANGLE - A3

DIAGONALS - D10<sup>1</sup> D13<sup>1</sup>  
ANGLE - A4

DIAGONAL - D5<sup>1</sup>

DIAGONAL - D6

DIAGONAL - D7

DIAGONAL - D7<sup>1</sup>

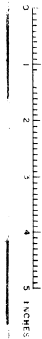
REQUIRED LIST

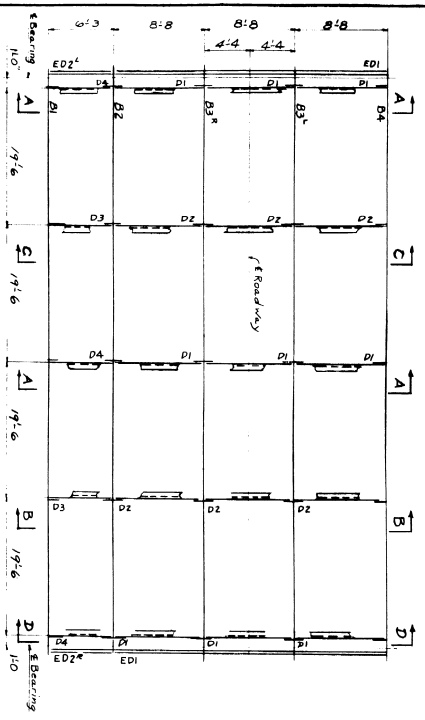
No.	DESCRIPTION	MAX	REMARKS
2	DIAGONAL D5 <sup>1</sup>	D5 <sup>1</sup>	
2	do	D5 <sup>2</sup>	
2	do	D6	
ONE	do	D7	
ONE	do	D7 <sup>1</sup>	
2	do	D8 <sup>1</sup>	
2	do	D8 <sup>2</sup>	
ONE	do	D9 <sup>1</sup>	
ONE	do	D10 <sup>1</sup>	
ONE	do	D11 <sup>1</sup>	
ONE	do	D12 <sup>1</sup>	
ONE	do	D13 <sup>1</sup>	
ONE	do	D14	
ONE	do	D15	
ONE	do	D16	
ONE	do	D17	
ONE	do	D18	
ONE	do	D19	
ONE	do	D20	
ONE	do	D21	
ONE	do	D22	
ONE	do	D23	
ONE	do	D24	
ONE	do	D25	
ONE	do	D26	
ONE	do	D27	
ONE	do	D28	
ONE	do	D29	
ONE	do	D30	
ONE	do	D31	
ONE	do	D32	
ONE	do	D33	
ONE	do	D34	
ONE	do	D35	
ONE	do	D36	
ONE	do	D37	
ONE	do	D38	
ONE	do	D39	
ONE	do	D40	
ONE	do	D41	
ONE	do	D42	
ONE	do	D43	
ONE	do	D44	
ONE	do	D45	
ONE	do	D46	
ONE	do	D47	
ONE	do	D48	
ONE	do	D49	
ONE	do	D50	
ONE	do	D51	
ONE	do	D52	
ONE	do	D53	
ONE	do	D54	
ONE	do	D55	
ONE	do	D56	
ONE	do	D57	
ONE	do	D58	
ONE	do	D59	
ONE	do	D60	
ONE	do	D61	
ONE	do	D62	
ONE	do	D63	
ONE	do	D64	
ONE	do	D65	
ONE	do	D66	
ONE	do	D67	
ONE	do	D68	
ONE	do	D69	
ONE	do	D70	
ONE	do	D71	
ONE	do	D72	
ONE	do	D73	
ONE	do	D74	
ONE	do	D75	
ONE	do	D76	
ONE	do	D77	
ONE	do	D78	
ONE	do	D79	
ONE	do	D80	
ONE	do	D81	
ONE	do	D82	
ONE	do	D83	
ONE	do	D84	
ONE	do	D85	
ONE	do	D86	
ONE	do	D87	
ONE	do	D88	
ONE	do	D89	
ONE	do	D90	
ONE	do	D91	
ONE	do	D92	
ONE	do	D93	
ONE	do	D94	
ONE	do	D95	
ONE	do	D96	
ONE	do	D97	
ONE	do	D98	
ONE	do	D99	
ONE	do	D100	

WORKMANSHIP SPECS.  
State of Maine Highway Commission Bridge  
Division Steel Highway Bridges, November 1941

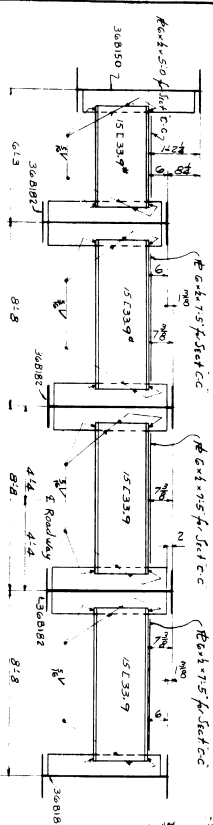
Diagonals & Angles

STATE HIGHWAY COMMISSION - MAINE  
WESTBROOK, MAINE  
**BETHLEHEM STEEL COMPANY**  
FABRICATED STEEL CONSTRUCTION  
POTTSTOWN DRIFTING ROOM P.O. BOX 100, POTTSTOWN, PA.  
MADE IN U.S.A.  
ORDERED BY G.F.C. MADE BY ENVI. S. (L. 13)  
LIFT ASSEMBLY UNIT  
CONTRACT NO. 2943

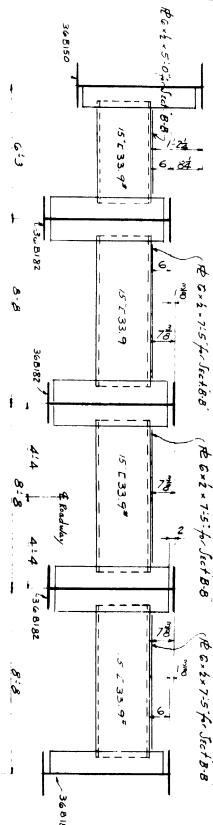




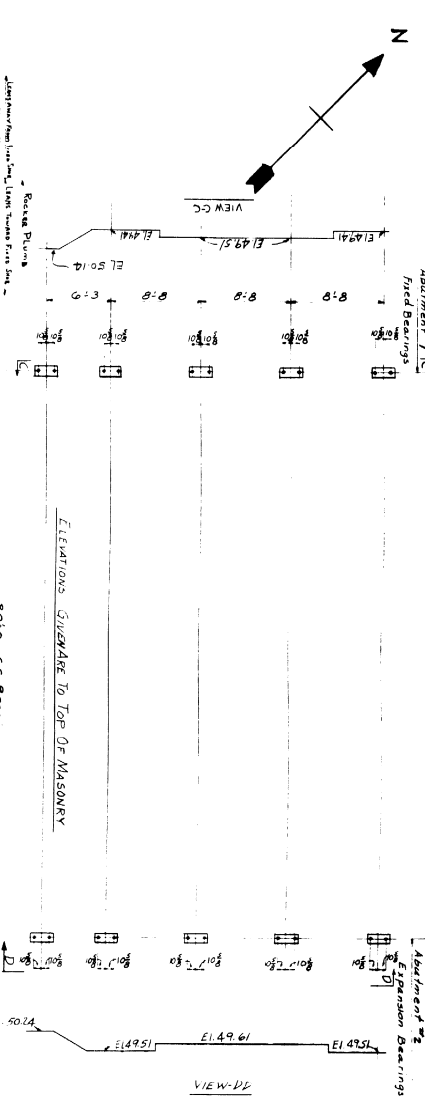
ERUCTION DIAGRAM



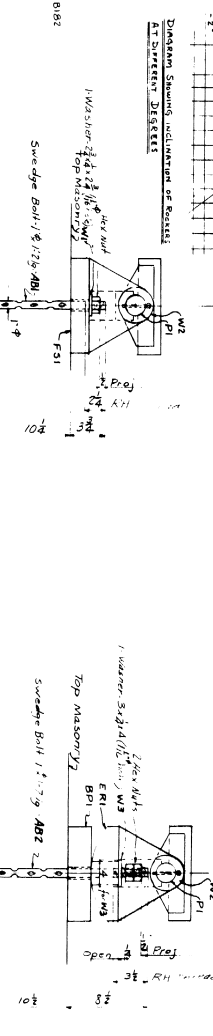
SECTION AA' C.C.



SECTION B-B' D.D.

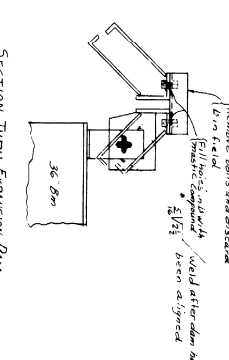


ANCHOR BOLT PLAN

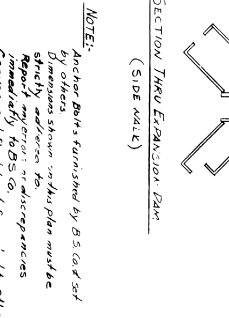


FIXED BEARING

EXPANSION BEARING



SECTION THRU EXPANSION DAM (SIDE MALE)



SECTION THRU EXPANSION DAM (PISTONWAY)

NOTE: 1. Diaphragms to have 6 # 1/2" steel wire as shown in SECTION A-A' C.C.

NOTE: Anchor bolts furnished by B.S. Co. of Westboro, Mass. Dimensions shown on this plan must be strictly adhered to. All irregularities reported by G.S. Co. are to be corrected. Canvas and keel lead furnished by others.

DATE	1916
PROJECT	CAMBERLAND MILLS BRIDGE
OWNER	STATE HIGHWAY DEPT. MAINE
DESIGNED BY	BETHLEHEM STEEL COMPANY
CHECKED BY	POTTSWOM PORTING ROOM
IN CHARGE	G. T. D.
MADE BY	H. G. B.
REVISION	LAT. AMEN. N.K.

CONTRACT C-2743 JAN 11 1916 SHEET 69-46

