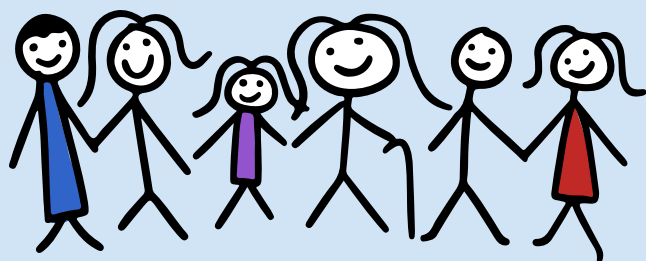


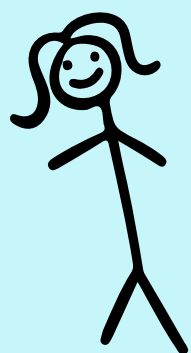
TALIS



TEACHING AND LEARNING INTERNATIONAL SURVEY

WHAT IS IT?

TALIS asks teachers and school leaders about working conditions and learning environments at their schools to help countries face diverse challenges. Sponsored by the Organization for Economic Cooperation and Development (OECD), TALIS is unique because it is the only comparative international education study that collects data on nationally representative samples of teachers. The aim of TALIS is to produce rich and reliable information on the whole population of teachers and principals in a country or area. For the United States, TALIS provides key information on teachers and principals and how they and their working and learning environments compare internationally.

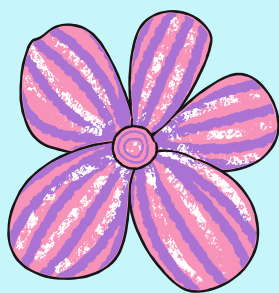


WHEN IS IT ADMINISTERED?

TALIS is administered every 6 years. It was first administered in 2008 and then in 2013 and 2018. The United States first participated in the 2013 cycle, along with 37 other education systems. The most recent round of data collection was in 2018, with 49 education systems participating.

HOW IS IT DESIGNED?

TALIS is composed of two questionnaires—one for teachers and one for their principals. The survey consists of questions about their backgrounds, work environments, professional development, and beliefs and attitudes about teaching. The international target population for TALIS consists of schools providing lower secondary education, as well as their principals and teachers. The questionnaires are administered online or on paper and their completion requires between 45 and 60 minutes. All information that is collected in this study is treated anonymously and confidentially.



WHERE CAN I LEARN MORE?

To learn more about ICILS please visit the National & International Assessments webpages on the Maine Department of Education website. U.S. results for the 2018 administration of TALIS are available on the TALIS 2018 U.S. Results page. Full results from all three rounds of TALIS are available on the OECD TALIS website. For other inquires, please contact Regina Lewis, Ph.D. at regina.lewis@maine.gov