

A dark silhouette of a person sitting and reading a book, positioned on the left side of the slide. The background is a dark blue gradient.

MAINE DEPARTMENT
OF EDUCATION

Welcome to Cohort 2

Presented by: The Maine DOE's Commissioner's Office and
the Office of Special Services & Inclusive Education





March 5th Agenda

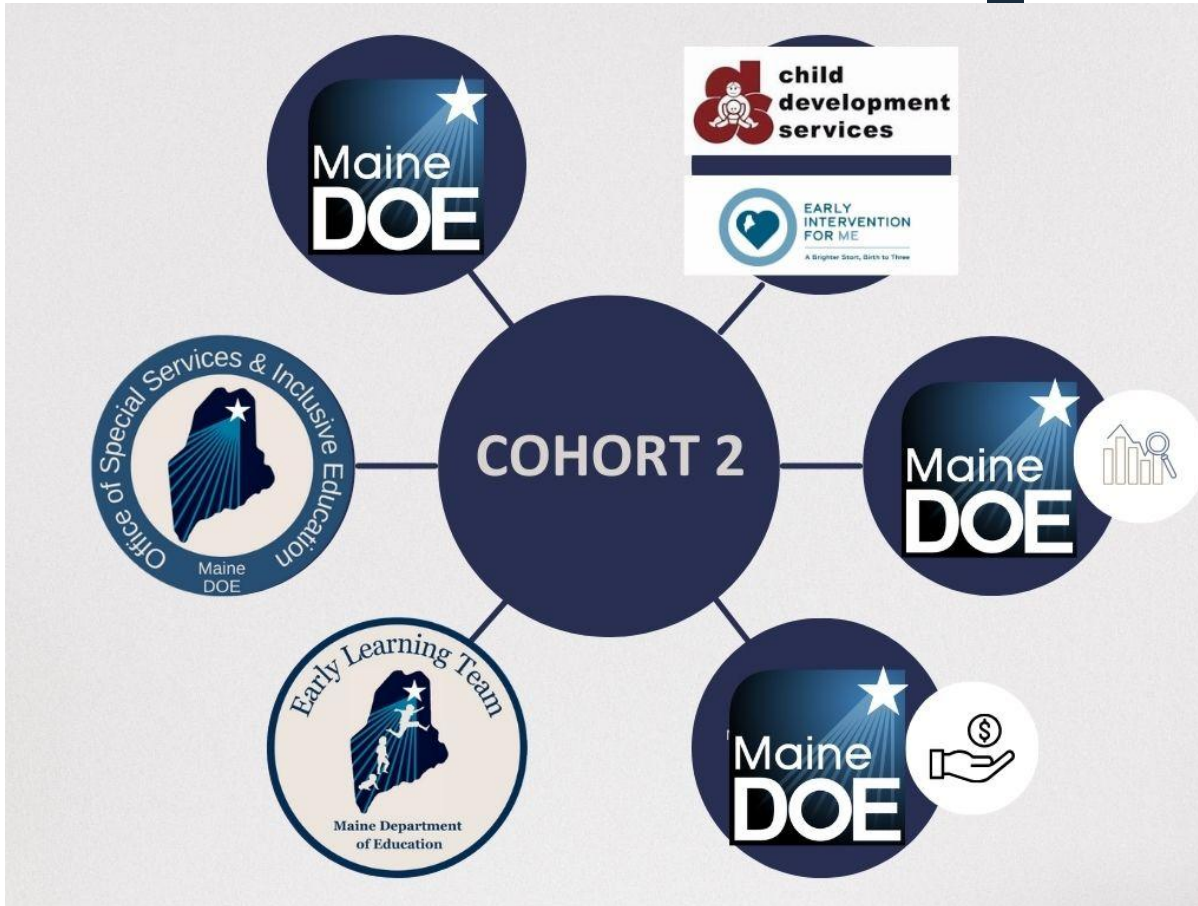
<u>Agenda Item</u>	<u>Time</u>	<u>Name</u>
Welcome and Introductions	5	Megan Welter
Updates	15	Megan Welter
Communications	5	Jennifer Hopkins
Website tour	5	Suzie Perry
Transition Runway	15	Sandy Flacke
Policy Updates	15	Erin Frazier
Early Learning Team Update	5	LeeAnn Larson / Sandy Flacke

Introductions

Introduce yourself!

In the chat:

- Name
- Role
- School District



DOE/CDS Cohort Contact Information

Transition Leads



Megan Welter

Associate Commissioner of Public
Education at the Department of
Education

Megan.welter@maine.gov



Erin Frazier

Director, Office of Special Services
Birth-22 at the Department of
Education

Erin.Frazier@maine.gov



Sandy Flacke

Deputy Director of Special
Services at the Department of
Education

J.sandy.flacke@maine.gov



Jennifer Hopkins

Assistant Early Childhood Special
Education Transition Coordinator
Department of Education/CDS

Jennifer.l.hopkins@maine.gov



Suzie Perry

Early Childhood Special Education
Consult

Department of Education
suzanne.perry@maine.gov

Fiscal and Data Contacts



Nicole Denis

Director of Finance
Department of Education
nicole.l.denis@maine.gov



Paula Gravelle

School Finance Coordinator
Department of Education
paula.b.gravelle@maine.gov



Barbara McGowen

Director of Fiscal Management,
Special Services B-22
Department of Education
barbara.a.mcgowen@maine.gov



School Finance Manager
Department of Education
ida.batista@maine.gov



Katherine Warren

Education Data Systems Manager
Department of Education
katherine.warren@maine.gov

Early Learning Team



Leeann Larsen

Director of Early Learning
Department of Education

Leeann.Larsen@maine.gov



Nicole Madore

Early Childhood Specialist
Department of Education

nicole.madore@maine.gov



Marcy Whitcomb

Public Pre-K Consultant
Department of Education

marcy.r.whitcomb@maine.gov

CDS Team



Dan Hemdal

CDS State Director
Child Development Services

Dan.Hemdal@maine.gov



Jacquelyn Hersom

Assistant 619 Coordinator
Child Development Services

jacquelyn.n.hersom@maine.gov



Lori Whittemore

Director of Preschool Program
Development
Child Development Services

lori.whittemore@maine.gov

Updates

- Start date for assuming FAPE and Child Find responsibility
 - The SAU's first day of school for students
- Advance allocation for reasonable and necessary expenses prior to first day of school
 - April 1, 2025
 - This advance will be deducted from the 1st quarter allocation
- Responsibility for FAPE
 - Options for 3-year-olds
 - SAU assumes responsibility and serves children in their schools or their programs
 - SAU assumes responsibility and contracts with CDS Support and Service Hub for various services.
 - ***FAPE responsibility for 3-year-olds stay with CDS for 25-26 SY***
 - If this is determined, that SAUs must assume responsibility for all 3-year-olds in SY 26-27



Updates, cont.

Serving Early Childhood Special Education Students

1. SAU's are responsible for ECSE for children who reside within their SAU boundary.
 - Attend the SAU Pre-K programs
 - Attend a collaborative program in the SAU community
2. SAU's are not responsible for ECSE when children
 - Attend a program out of state
 - Attend a program out of the SAU boundary *and* there is programming available in the SAU.
3. For SAU's that do not have programming/ space within their Pre-K programs nor any collaborative programs in the SAU community, there are multiple options:
 - Superintendent's agreement with the SAU where student is in a program
 - Develop partnerships with the childcare/ preschool program where the child attends
 - Provide telehealth in the childcare/preschool program where the child attends
 - Offer that the child participate in drop-in services already provided in the SAU
 - If the IEP agrees, the child can access services at the service provider location
 - Or another solution that is specific to your area
 - The Department will support the provision of services if there are challenges or questions with these options.





Communication

Dr. Sandy Flacke

j.sandy.flacke@maine.gov

207-446-0567

Jennifer Hopkins

Jennifer.L.hopkins@maine.gov

207-660-3954



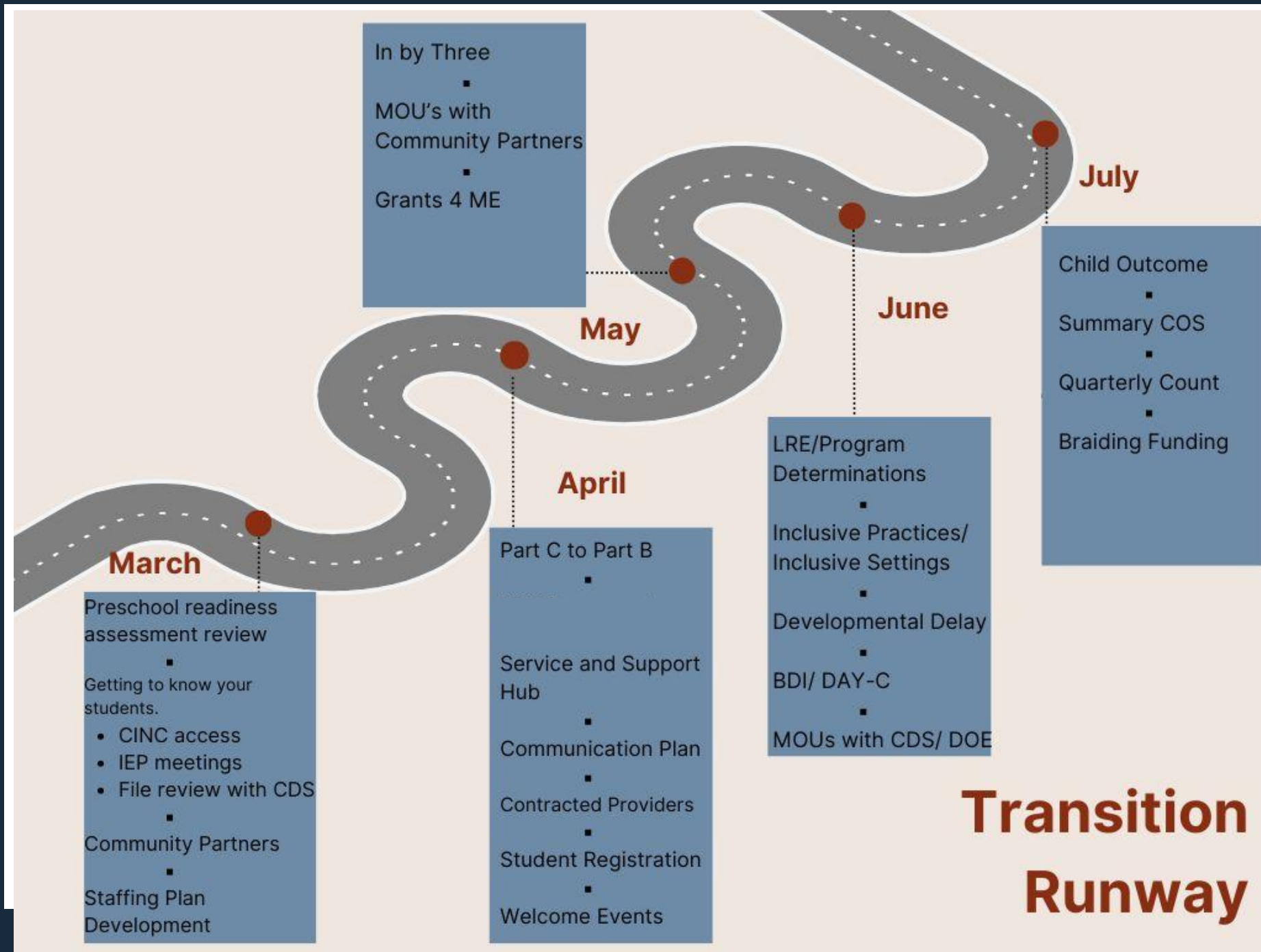
Website

[Maine DOE Early Childhood Special Education](https://www.maine.gov/doe/learning/cds/earlychildhoodspecialeducation)

<https://www.maine.gov/doe/learning/cds/earlychildhoodspecialeducation>

Cohort 2 Bi-Weekly Technical Assistance Meeting Dates:

March 19th
April 2nd
April 16th
April 30th
May 14th
May 28th
June 11th



Policy Updates





Questions?



Contact information:
Megan.welter@maine.gov
Erin.Frazier@maine.gov
J.sandy.flacke@maine.gov

Find Us Online!



www.maine.gov/doe



[@MaineDOEComm](https://www.youtube.com/@MaineDOEComm)



[@mainedepted](https://www.instagram.com/mainedepted)



[@mdoenews](https://twitter.com/mdoenews)



[@MaineDepartmentofEducation1](https://www.facebook.com/MaineDepartmentofEducation1)

