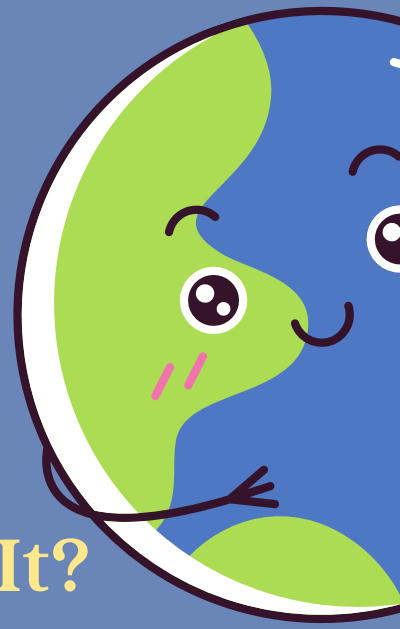


# NWEA MAP GROWTH: THE BASICS

Maine Department of Education



## What is It?

NWEA MAP Growth assessments provide assessment data to educators in order to support and inform student instructional decision making in the classroom in both reading, language, and mathematics. This interim assessment is administered multiple times during the school year and provides immediate and actionable student performance data.

## When is it Given?

NWEA MAP growth on-line interim assessment is administered to students in grades 3-8 and 3rd year of high school during the fall and spring each school year. Please check here for a continually updated administration calendar.

## How is it Designed?

NWEA MAP Growth is an on-line assessment that can be administered remotely or in-person, with approved accommodations available. The assessment is adaptive therefore the difficulty level of questions adapts based upon the students response.

## Where Can I Learn More?

For general inquiries, please contact Assessment Coordinator Nancy Godfrey at [nancy.godfrey@maine.gov](mailto:nancy.godfrey@maine.gov). For information on accommodations, and other general resources, please visit this page.

