

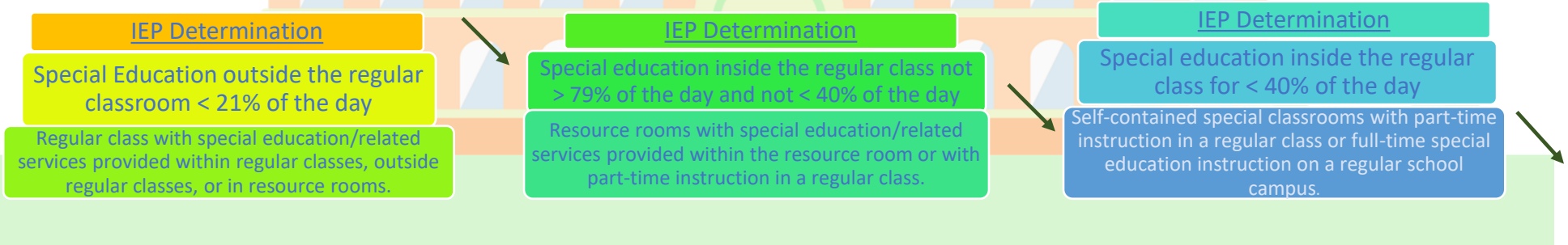
MUSER Continuum

Public School

Regular Class

Resource Room

Self-contained



This Photo by Unknown Author is licensed under CC BY-NC

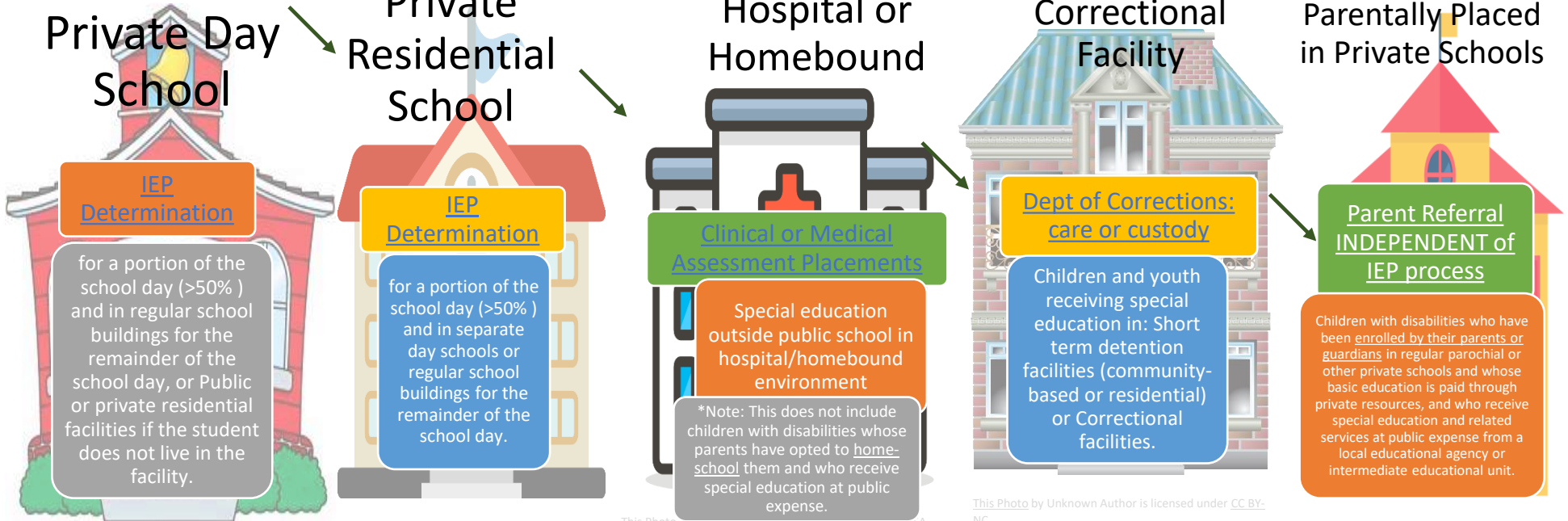
Public or Private Day School

Public or Private Residential School

Hospital or Homebound

Correctional Facility

Parentally Placed in Private Schools



This Photo by Unknown Author is licensed under CC

This Photo by Unknown Author is licensed

This Photo by Unknown Author is licensed under CC BY-SA

This Photo by Unknown Author is licensed under CC BY-NC

This Photo by Unknown Author is licensed under CC BY-NC

Maine Unified Special Education Regulations X.2.c (2); pages 122-125
Special Education Program Settings for children ages 5 – 20

- a) Special Education outside the regular classroom < 21% of the day: IEP Determination
Regular class with special education/related services provided within regular classes, outside regular classes, or in resource rooms.
- b) Special education inside the regular class not > 79% of the day and not < 40% of the day: IEP Determination
Resource rooms with special education/related services provided within the resource room or with part-time instruction in a regular class.
- c) Special education inside the regular class for < 40% of the day: IEP Determination
Self-contained special classrooms with part-time instruction in a regular class or full-time special education instruction on a regular school campus.
- d) Separate School-Special Education outside public or private school for > 50% of the school day: IEP Determination
Public or private day schools for children with disabilities [all day], for a portion of the school day (>50%) and in regular school buildings for the remainder of the school day, or Public or private residential facilities if the student does not live in the facility.
- e) Public or private Residential Facility-Special education outside public school for > 50% of the school day: IEP Determination
Public or private residential schools for children with disabilities [all day] or for a portion of the school day (>50%) and in separate day schools or regular school buildings for the remainder of the school day.
*Note: This does not include children who receive education programs at the facility but do not live there.
- f) Homebound/Hospital-Special education outside public school in hospital/homebound environment: Clinical or medical assessment placements
Hospital programs or Homebound programs.
*Note: This does not include children with disabilities whose parents have opted to home-school them and who receive special education at public expense.
- g) Correctional facility: Dept of Corrections care or custody
Children and youth receiving special education in: Short term detention facilities (community-based or residential) or Correctional facilities.
- h) Parentally placed in private schools: Parent referral independent of IEP process
Children with disabilities who have been enrolled by their parents or guardians in regular parochial or other private schools and whose basic education is paid through private resources, and who receive special education and related services at public expense from a local educational agency or intermediate educational unit.