

Breakfast after the Bell School Year 2023



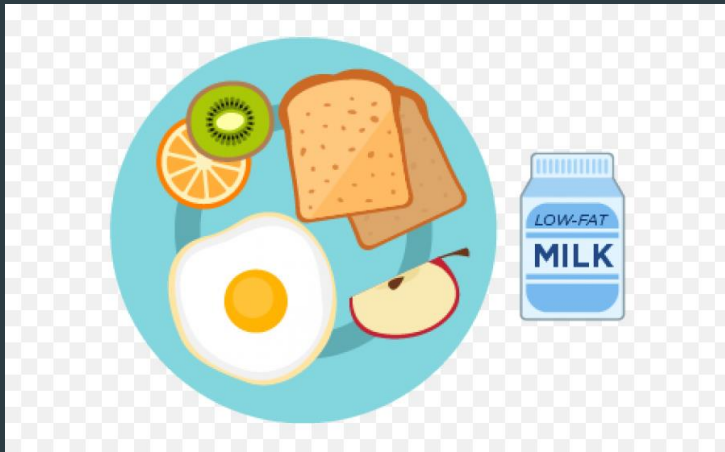
Child Nutrition
Maine Department of Education

An Act To Address Student Hunger with a "Breakfast after the Bell" Program"

The SY23 school year will be the first year L.D. 359 will be a requirement while participating in the National School Breakfast Program.

A public school where at least 50% of the students are Free or Reduced during the proceeding school year. Must operate an alternative breakfast delivery service, that provides breakfast after the start of the school day

This determined by the district's October Survey



Schools exempt from L.D. 359 include:

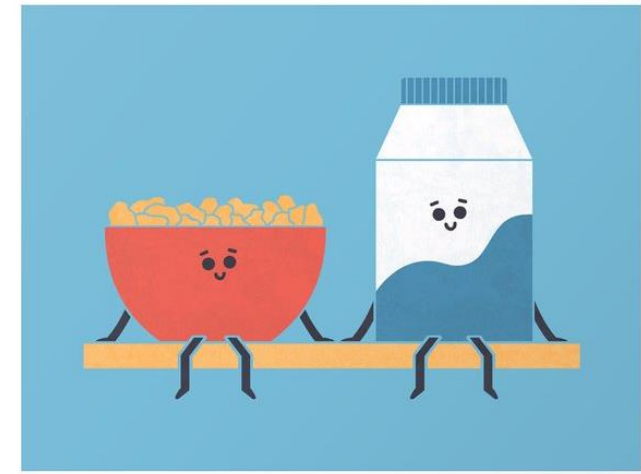
- Stand alone high school buildings that contain grades 9-12 only
- Those schools who had over a 70% or more participation rate of free and reduced students in breakfast program in the prior school year.
- Schools who are less than 50% free or reduced.

Participation rates were not assessed in the breakfast program for SY21 and SY22 due to meals being offered through the Seamless Summer Option and Summer Food Service Program, this information will be available for upcoming school years. There will be no exempt schools based on this, this year.



“After the Bell”

Meals must be provided after the start of the school day.



Examples:

- ▶ Students are allowed to bring breakfast back to homeroom
- ▶ Time is built in between first and second period or following homeroom to offer breakfast. (Normally no more than 15 minutes is needed.)
- ▶ Breakfast can be served in the cafeteria or hallway utilizing kiosks or carts in high traffic locations.
- ▶ Students pick up their breakfasts and eat either in the cafeteria or on their way to their next class.

CNPweb Reporting BAB

55. Time School Day Begins: 08:00 AM

56. Time Breakfast Begins: 07:30 AM

57. Time Breakfast Ends: 09:00 AM

58. Breakfast Serving Type:

Breakfast Location	Before the Bell	After the Bell
In the Classroom	<input type="checkbox"/>	<input checked="" type="checkbox"/>
Grab and go from Hallway	<input type="checkbox"/>	<input type="checkbox"/>
Grab and go from Cafeteria	<input type="checkbox"/>	<input checked="" type="checkbox"/>
Traditional breakfast period in the Cafeteria	<input checked="" type="checkbox"/>	<input type="checkbox"/>

Alternative Delivery Models

- ▶ Breakfast in the Classroom
- ▶ Grab and Go-to from hallway
- ▶ Grab and Go-from the Cafeteria
- ▶ Second Chance Breakfast

Breakfast in the Classroom

- ▶ Integrate breakfast with instructional time/class attendance and announcements
 - ▶ Breakfast is delivered to the classroom.
 - ▶ Students can pre-order meals, but accountability must be done at the time the student receives the meal.
 - ▶ Additional staff may be needed or teacher/custodial buy-in



Grab and Go-to the Classroom

- ▶ Portable carts or tables located in high-trafficked areas.
- ▶ POS system for accountability is needed to make sure students cannot receive more than one reimbursable meal.
- ▶ Students can eat in the classroom or elsewhere on school grounds.



Grab and Go-from the Cafeteria

Meals are packaged to-go from the cafeteria.

Pros-

- ▶ POS system is already available.
- ▶ Staff can stay in the cafeteria and can continue with tasks

Cons-

- ▶ The cafeteria may be in a less trafficked area with less opportunity for participation.

Second Chance Breakfast

- Cafeteria is opened for a second time for a sit-down breakfast usually between first and second period.
- A second chance for a hot breakfast when students appetites have had time to build.

Serving times for BAB

How is this going to affect Lunch and the FFVP?

Serving meals close together will impact meal participation. Ideally there should be a 3-hour window between breakfast and lunch.

FFVP should be served separate from both breakfast and lunch.

Opting out of Breakfast after the Bell

- ▶ An SFA subject to L.D. 359 may opt out of the alternative breakfast delivery service with Board approval.
- ▶ Hold a public hearing and give public notice 10 days before the hearing
- ▶ Provides a cost benefit analysis or any other material that demonstrates that implementing the alternative breakfast delivery service would cause undue financial or logistical hardship.
- ▶ Within 30 days of the public hearing a majority vote, if it is determined that an alternative breakfast delivery service is not financially or logistically viable
- ▶ The SFA notifies Child Nutrition of the vote to opt out (opt out every 2 years)

Criteria for this is outlined in
Sec. 2. 20-A MRSA §6602, sub-§1, ¶G og og S.P. 99 - L.D. 359. Found here:
<https://legislature.maine.gov/legis/bills/getPDF.asp?paper=SP0099&item=9&snum=129>

Common Questions:

Q: Do you opt out by school or by district

A: Opting out is by individual School and must be re-assessed every 2 years

Q: Is there a deadline to opt out?

A: there is no deadline to opt out of BAB

Q: Does alternative delivery system mean I need carts for the classroom?

A: No, it simply means a second method of obtaining breakfast for all students.

Q: The bill requires alternative delivery method, what is this?

A: It means two different methods a student has access to breakfast.

Q: The bill requires alternative delivery method, what is this?

A: It means two different methods a student has access to breakfast.

Remember – Lunch and FFVP cannot overlap

Breakfast Grants

- ▶ Funding is available to start or expand alternative breakfast delivery services that provides breakfast after the start of the school day.
- ▶ A SAU with a public school in which at least 50% of students qualified for free or reduced-price lunch during the preceding school year qualifies for funding including high schools
- ▶ Is non- competitive!
- ▶ No deadline to apply
- ▶ No competitive quotes necessary for equipment (Just one quote needed)
- ▶ Funds requested must be reasonable, justifiable, onetime start-up expense.
- ▶ If you are requesting funding for more than 1 school, make sure to answer the applicable questions for each school applying for funding. (separate grant forms for each school)



Grant Ideas

- Carts, tables, display shelves.
- Mobile Milk coolers
- Blenders
- Tablets for mobile POS systems
- Coolers and hot boxes
- Baskets for students to take to-go meals
- Waste Receptacles