

A dark silhouette of a person sitting and reading a book, set against a dark blue background. The person is positioned on the left side of the frame, facing right.

MAINE DEPARTMENT
OF EDUCATION

Historical Literacy Through Place-Based Learning

Presented by: Sam Jenkins, Kathy Bertini & Heather Martin





✓ **Professional Development**
History, Literacy & the QFT!

What's this all about?

Learning Objectives

Today, we are going to ...

- Explore History, Literacy, and the relationship between;
- Unpack some preconceptions and misconceptions;
- Learn how to use the QFT;
- Ask a bunch of questions!

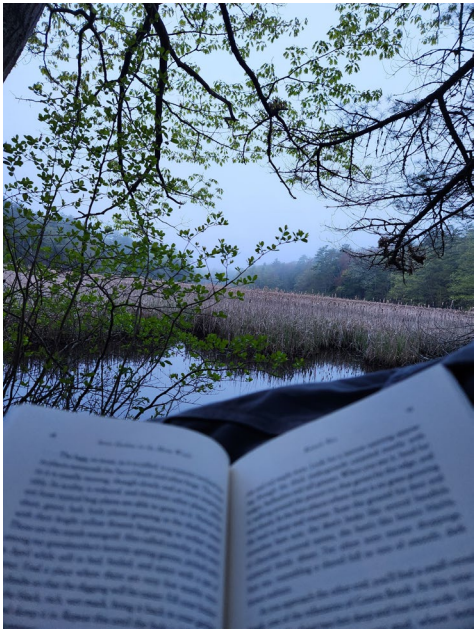
✓ **Learning Outcomes**
Understand how literacy skills are built through place-based explorations of history – and - gain QFT skills!

✓ **Contact Hours**

2



Who Are We?





Who Are We?





Who Are We?





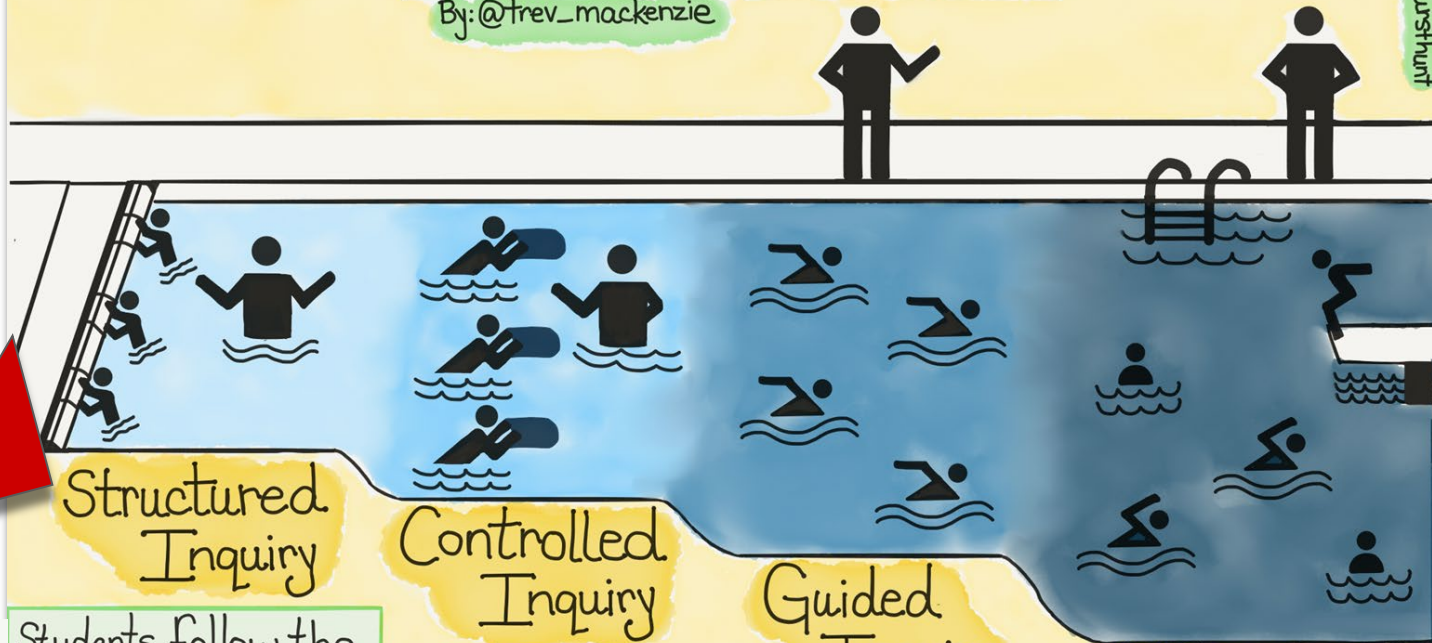
QFT

- Question
- Formulation
- Technique

Types of Student Inquiry

By: @trev_mackenzie

@rbathursthurl



Structured Inquiry

Students follow the lead of the teacher as the entire class engages in one inquiry together.

Controlled Inquiry

Teacher chooses topics and identifies the resources students will use to answer questions.

Guided Inquiry

Teacher chooses topics/questions and students design product or solution.

Free Inquiry

Students choose their topics without reference to any prescribed outcome.



Inspired by: Fitchman, 2011



The QFT, on one slide...

1) Question Focus

2) **Produce** Your Questions

✓ Follow the rules

✓ Number your questions

3) **Improve** Your Questions

✓ Categorize questions as Closed or Open-ended

✓ Change questions from one type to another

4) **Strategize**

✓ Prioritize your questions

✓ Action plan or discuss next steps

✓ Share

5) **Reflect**

1. Ask as many questions as you can
2. Do not stop to discuss, judge or answer
3. Record *exactly* as stated
4. Change statements into questions

Closed-Ended:

Answered with "yes," "no" or one word

Open-Ended: Require longer explanation

**Connections
to Literacy**

It is time to reveal **The Question Focus.**

- Could be a statement,
- Could be an image,
- The only thing that can't be a Question Focus... is another Question.

For this, we are going to divide into two groups



© tree-guide.com

OR



“Trees” with Kathy

“Grand Hotels” with Heather

A



Champlain & Dorr mountains have light green and dark green areas in the summer

A



Champlain & Dorr mountains have light green and dark green areas in the summer.

Produce your Questions

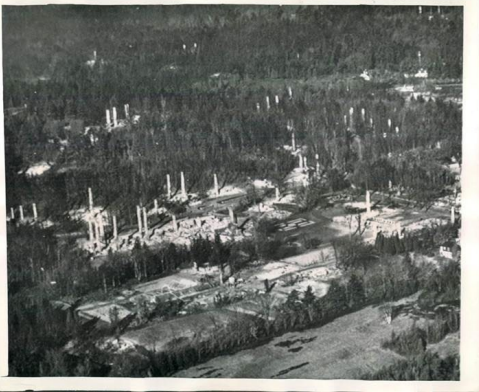
- Ask as many as you can in the time you have
- Do NOT stop to discuss, judge, or answer
- Write each question exactly as it was given
- Change any statements into questions

B

The Malvern Hotel, Bar Harbor, Maine



B



The Malvern Hotel, Bar Harbor, Maine

Produce your Questions

- Ask as many as you can in the time you have
- Do NOT stop to discuss, judge, or answer
- Write each question exactly as it was given
- Change any statements into questions

Improving the Questions

Improve your Questions

- Number the Questions

Improve your Questions

- Number the Questions
- Label them as either “O”pen or “C”losed

Improve your Questions

- Number the Questions
- Label them as either “O”pen or “C”losed
- What are the pros and cons of each?

Improve your Questions

- Number the Questions
- Label them as either “O”pen or “C”losed
- What are the pros and cons of each?
- Change one “O” to “C”, and one “C” to “O”



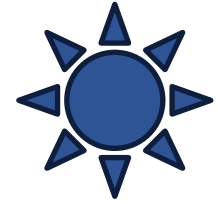
Discussion



Strategize

- Prioritize your questions
- Select the one you are going to research today

(What # question was it on your list?)



Share Out



10 minutes...



Research



Strategize

- What is your Plan?
 - What do you need to KNOW?
 - What do you need to DO?

A



Champlain & Dorr mountains have light green and dark green areas in the summer.

Sources

[Acadia National Park](#)

[Arbor Day Foundation Tree ID](#)

[Maine Dept. of Agriculture](#)

[National Park Service](#)

[News Center Maine](#)

[Tree Bee](#)

[Twenty Trees of Maine](#)

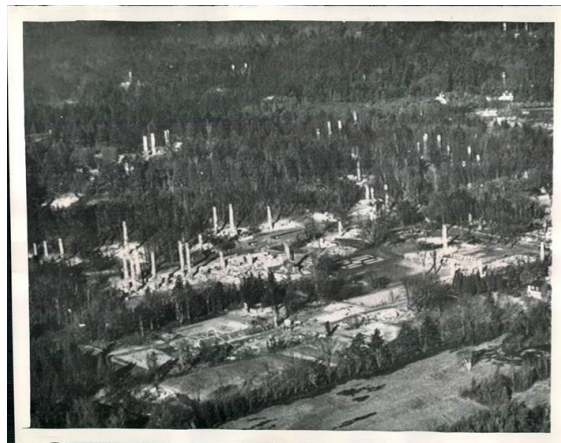




Strategize

- What is your Plan?
 - What do you need to KNOW?
 - What do you need to DO?

B



The Malvern Hotel, Bar Harbor, Maine

Sources

[Bar Harbor Historical Society](#)

[BHHS Archives](#)

[Bar Harbor Hotels and Boarding Houses](#)

[History.com](#)

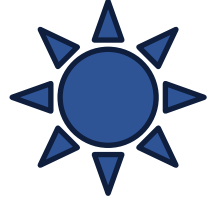
[Maine Dept. of Agriculture](#)

[National Park Service](#)

[Portland Press Herald](#)

[When In Your State](#)



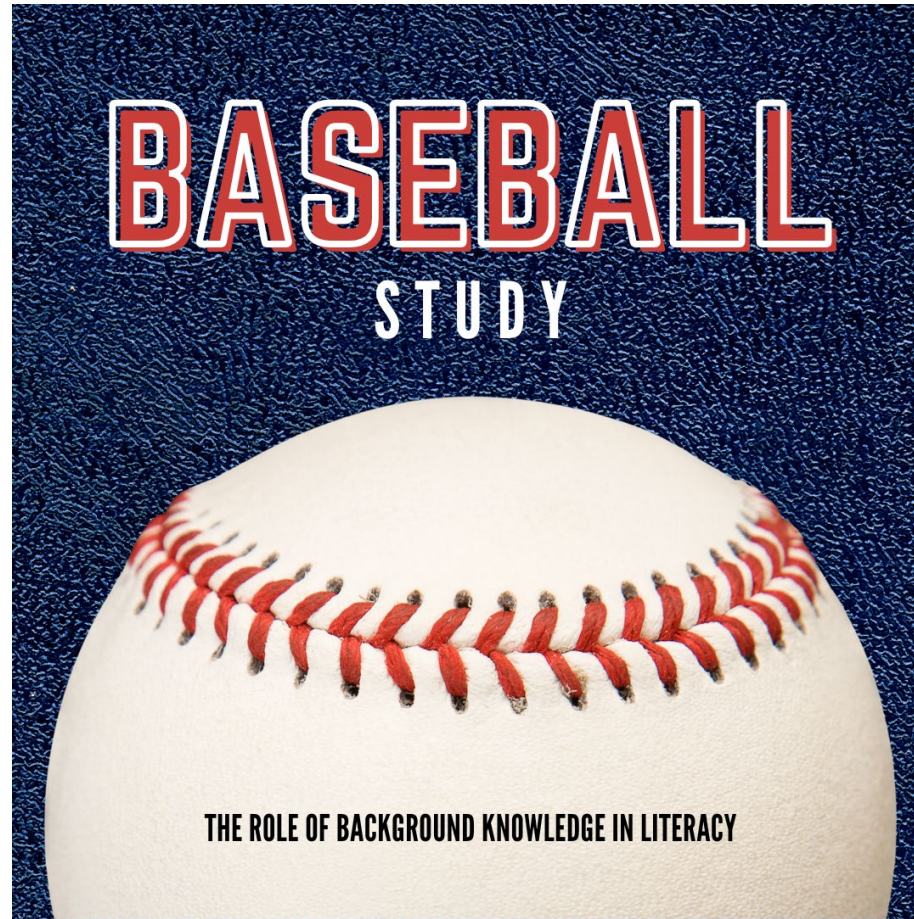


Report Back



Deeper Dive





Literacy Interwoven



The 5 “Big Ideas” of Literacy

[Phonemic Awareness](#) - The ability to identify and play with individual sounds in spoken words.

[Phonics](#) - Reading instruction on understanding how letters and groups of letters link to sounds to form letter- sound relationships and spelling patterns.

[Fluency](#) - The ability to read words, phrases, sentences, and stories correctly, with enough speed, and [expression](#).

[Vocabulary](#) - Knowing what words mean and how to say and use them correctly.

[Comprehension](#) - The ability to understand what you are reading.

“The Science of Reading” - [National Center on Improving Literacy](#)

Reflection

II Resources

[Interdisciplinary
Instruction Homepage](#)

[II Professional
Learning Schedule](#)

[II Professional
Learning Page](#)

[II Newsletter](#)

Hubs

[STEAM Hub](#)

[Numeracy Hub](#)

[Literacy Hub](#)

[Civics Hub](#)

Arts & Humanities Hub - Coming Soon

[EnGiNE Learning Experiences](#)

Question Formulation Technique

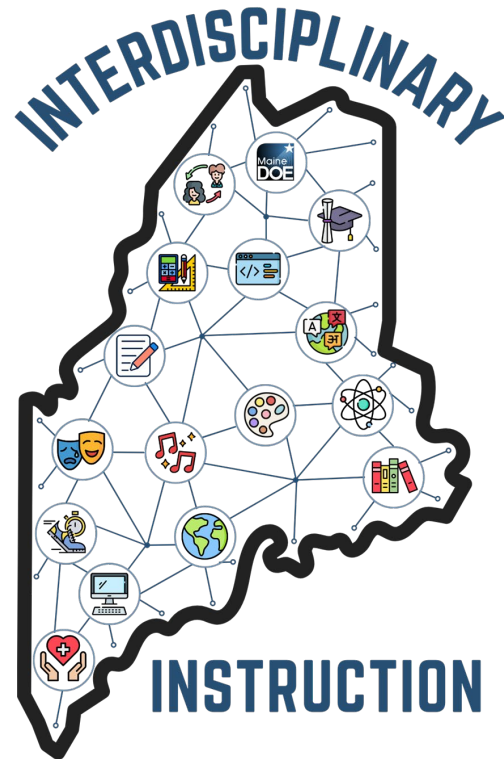
Modern Literacies

Teaching with Transfer

Student Centered Learning

Human Centered Learning

Concept Based Instruction





Stay Connected!

Find Us Online!



www.maine.gov/doe



[@MaineDOEComm](https://www.youtube.com/@MaineDOEComm)



[@mainedepted](https://www.instagram.com/mainedepted)



[@MaineDepartmentofEducation1](https://www.facebook.com/MaineDepartmentofEducation1)



Stay Connected!

Feedback

October 10th EngageMENT
Feedback

