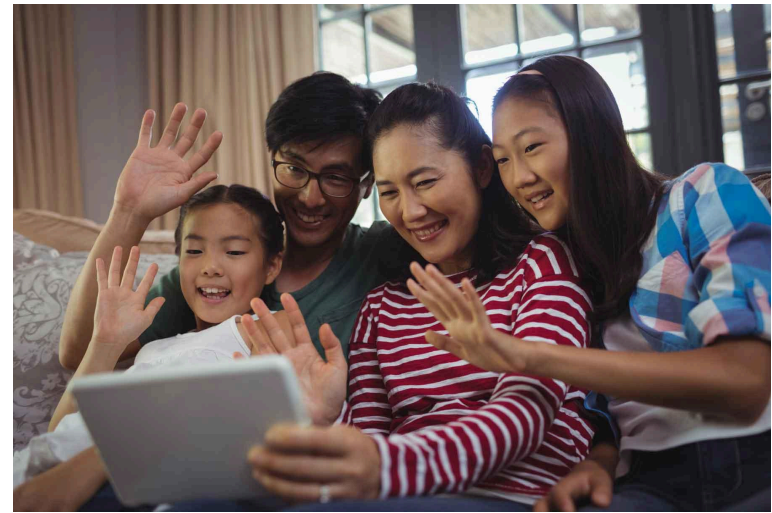




bond

verb

<https://www.wshs-dg.org/resource-center/ask-the-vet-pet-watch/132-ask-the-vet/273-human-animal-bond>



connect

verb

<https://www.prudential.com.sg/opus/articles/long-distance-relationships-family-friends>

Weekly Words U3 W1

Focus on Second/ 2nd Grade for ME | Boston Public Schools Department of Early Childhood P-2/

Maine Department of Education



custom

noun

<https://fineartamerica.com/featured/nepali-girls-namaste-greeting-himalayas-craig-lovell.html>



foreign

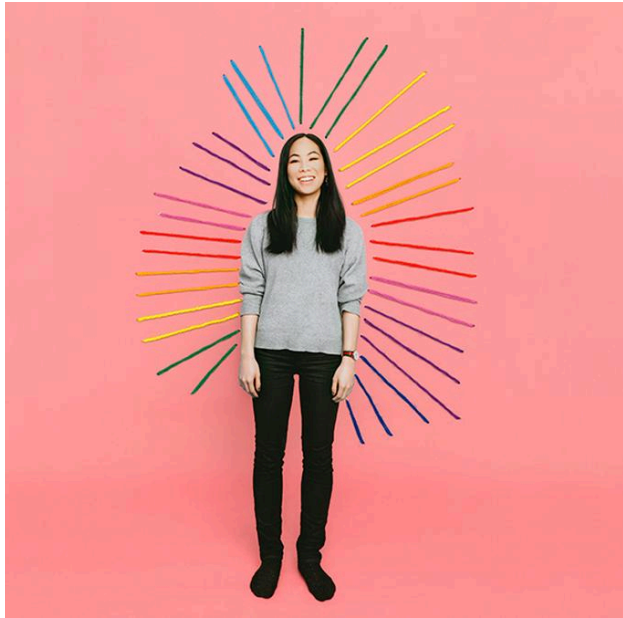
adjective

<https://kaleela.com/five-of-the-top-foreign-languages-to-learn-in-2021/>

Weekly Words U3 W1

Focus on Second/ 2nd Grade for ME | Boston Public Schools Department of Early Childhood P-2/

Maine Department of Education



identity

noun

<https://hbr.org/2019/09/the-benefits-of-bringing-your-whole-identity-to-work>



immigrant

noun

<https://www.thetelegram.com/opinion/gwynne-dyer-the-immigrant-problem-298552/>

Weekly Words U3 W1

Focus on Second/ 2nd Grade for ME | Boston Public Schools Department of Early Childhood P-2/

Maine Department of Education



infer

verb

<https://raisingchildren.net.au/autism/school-play-work/play-learning/playing-with-others-autistic-children>



unfamiliar

adjective

<https://lcme.com/currentnews/back-back-sightings-rare-birds-astonish-delight-local-birdwatchers/>,<https://www.birdwatchersdigest.com/bwdsite/learn/identification/sparrows-allies/house-sparrow.php>

Weekly Words U3 W1

Focus on Second/ 2nd Grade for ME | Boston Public Schools Department of Early Childhood P-2/  
Maine Department of Education