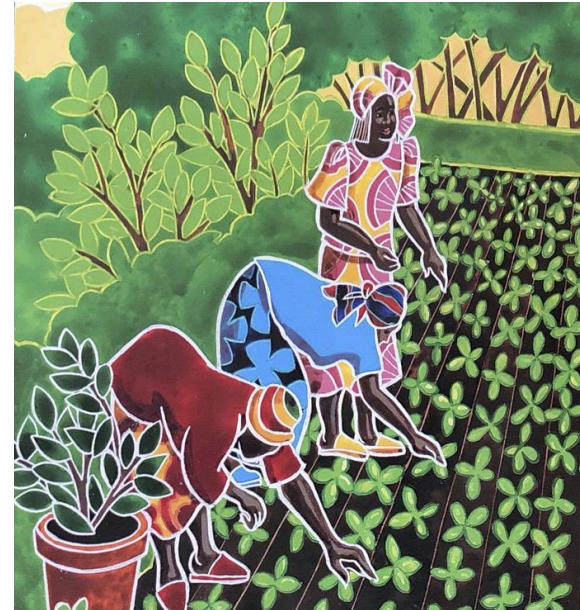


# clever

adjective

*From Six Dots: A Story of Young Louis Braille, illustration by Boris Kulikov*



# contribute

verb

*From Seeds of Change: Planting a Path to Peace, illustration by Sonia Lynn Sadler*

Weekly Words U1 W7

Focus on Second/ 2nd Grade for ME | Boston Public Schools Department of Early Childhood P-2/  
Maine Department of Education



# leader

noun

<https://littlesun.org/celebrating-wangari-maathai-and-her-tree-planting-movement/>



# recognize

verb

<https://www.livescience.com/21057-goats-remember-kids-voices.html>

Weekly Words U1 W7

Focus on Second/ 2nd Grade for ME | Boston Public Schools Department of Early Childhood P-2/  
Maine Department of Education



# resolve

verb

<https://bicycle.kendatire.com/vi-vn/tin-t%E1%BB%A9c/bicycle-news/tire-expert-flat-tires/>



# responsibility

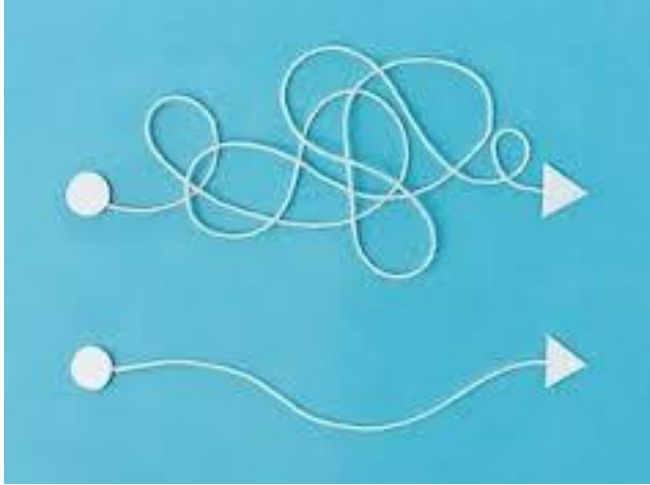
noun

<https://www.pinayhomeschooler.com/2019/01/montessori-practical-life-indoor-plant.html>

Weekly Words U1 W7

Focus on Second/ 2nd Grade for ME | Boston Public Schools Department of Early Childhood P-2/  
Maine Department of Education





# simplify

verb

<https://stockton.edu/general-studies/disability-studies-minor.html>



# trait

noun

<https://penfieldbuildingblocks.org/health-and-wellness/planting-a-kid-friendly-garden/>

Weekly Words U1 W7

Focus on Second/ 2nd Grade for ME | Boston Public Schools Department of Early Childhood P-2/

Maine Department of Education