

A dark blue silhouette of a person's head and shoulders, facing right, holding an open book. The background is a dark blue gradient with faint horizontal lines.

MAINE DEPARTMENT
OF EDUCATION

Cohort 1 Meeting June 4, 2025

End of the Year Celebration

Presented by: Office of Special Services & Inclusive Education



team
work

Thinking of the Future
acknowledging the past

Collaboration
and dialogue

BELIEVING IN
yourself

Trusting the
PROCESS

LISTENING

FLEX
IBILITY



And while we don't recommend
this...you helped to make it work.

You joined!

Andover Schools
Boothbay-Boothbay Harbor CSD (AOS 98)
Calais
Great Salt Bay (AOS 93)
Kittery School Department
Lincolnville
MSAD 4/RSU 80
RSU 13
RSU 19
RSU 29
RSU68
SAD 12
School Union #103 Jonesport and Beals
St. George
Veazie
York

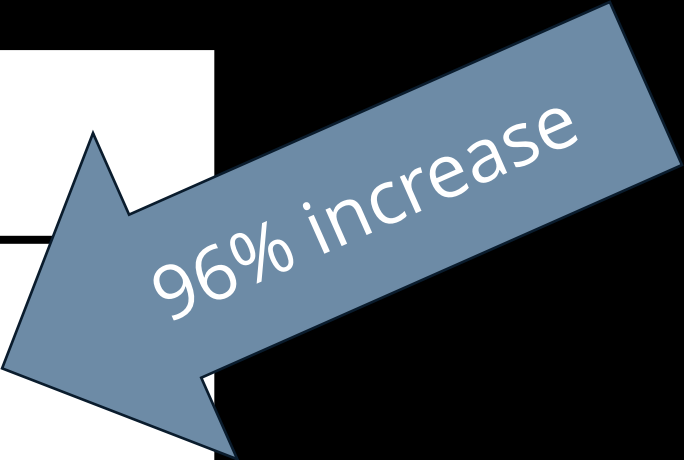
You inspired this group...

AOS 47
AOS 98
Auburn Public Schools
Brewer Public Schools
Greenbush Public Schools
Hancock Public Schools
Lamoine Public Schools
MSAD 41
RSU 12
RSU 15
RSU 21
RSU 23
RSU 26
RSU 50
RSU 54
RSU 56
RSU 71
RSU 72
RSU 75
Saco
School Union #93
Wiscasset Public Schools

Who will you inspire next year?

NUMBER OF CHILDREN SERVED BY COHORT

Cohort	Planned (August 2024)	Actual (April 2025)
C1 (SY2024-25)	171	336

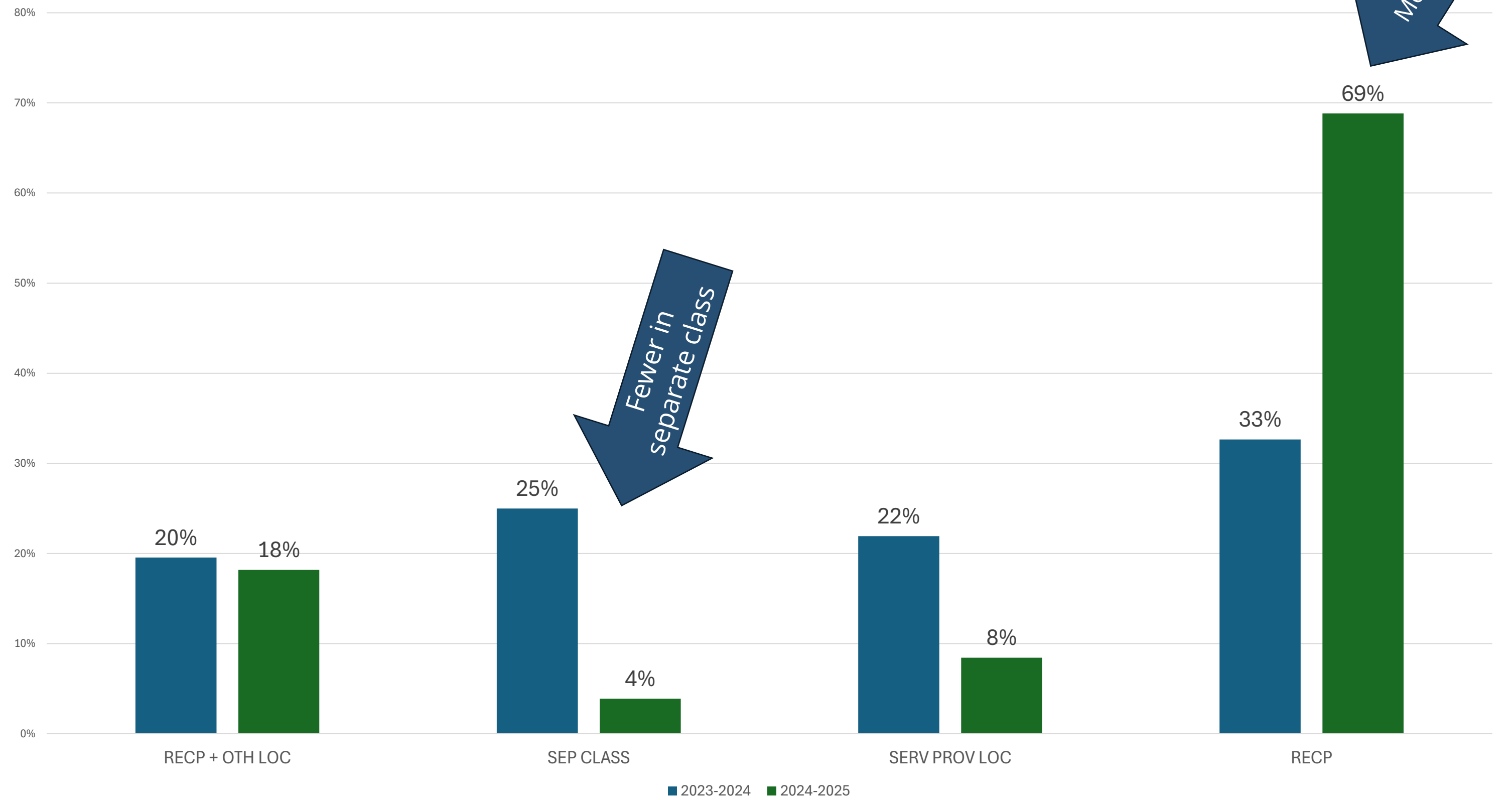


Next year...2025-2026

Cohort	Planned (August 2025)	Actual (April 2026)
C1 (SY2025-26)		336
C2 (SY2025-26)	272	500+



Preschool Environments Data FY2023 Statewide and FY2024 Cohort 1

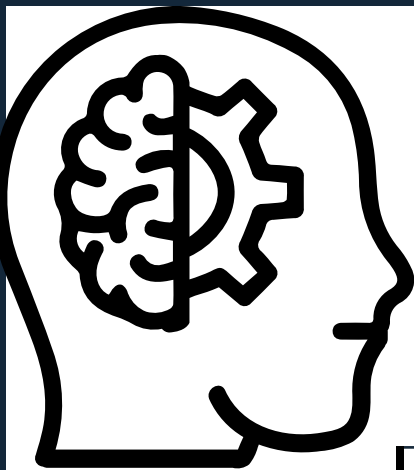


A greater percentage of children were served in Regular Early Childhood Programs than in prior years, using the October 1 enrollment count.

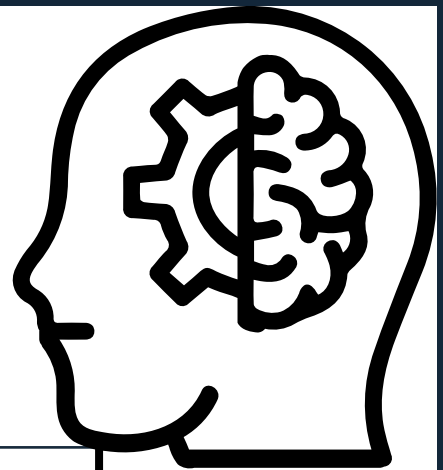
Professional Development

There were 31 hours of collaboration, discussion, and professional development for SAUs in Cohort 1.





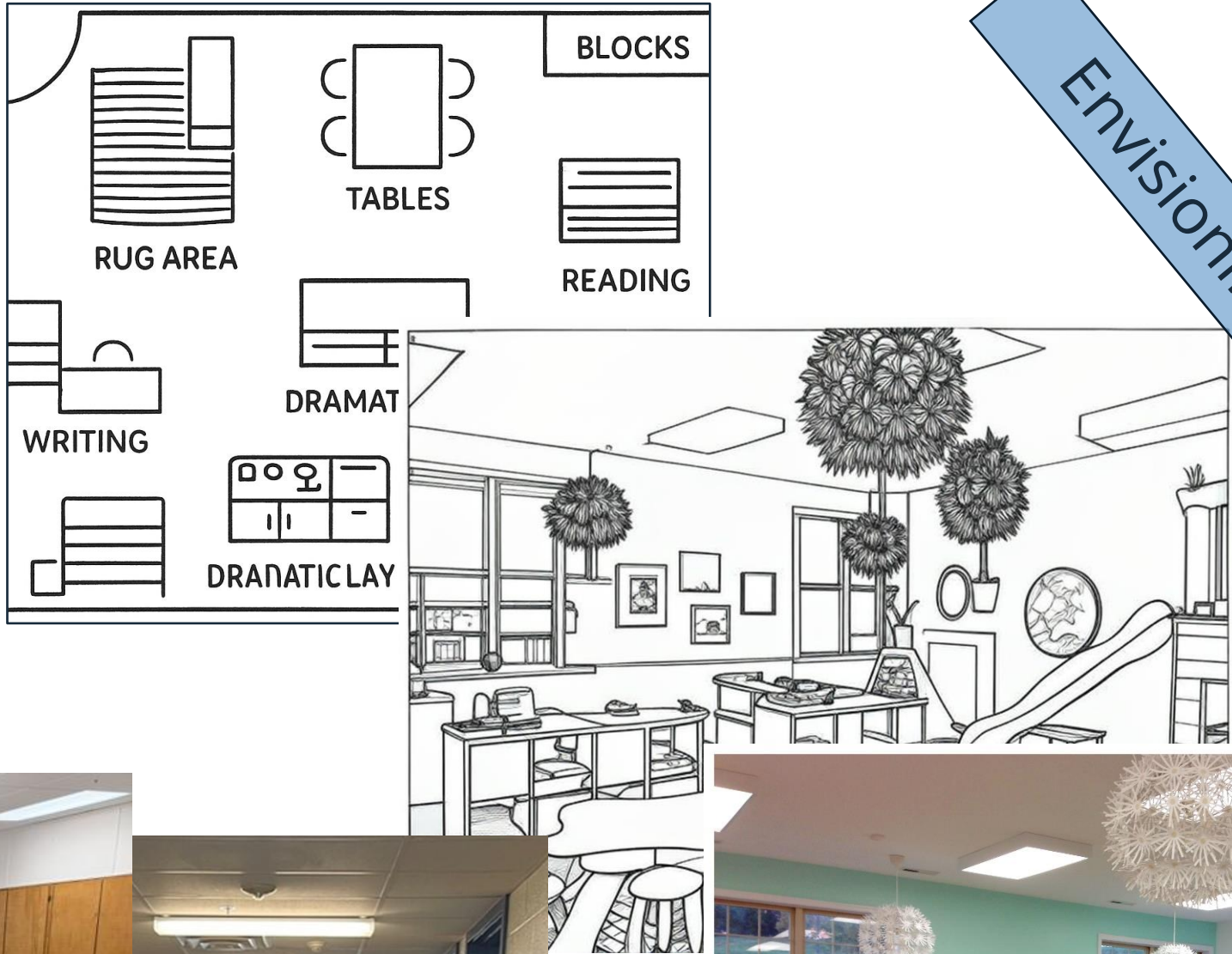
PD Topics Presented



PL 643	Preschool Special Education Fund	FAPE Obligation	Summer Referrals	Preschool Transitions
Certification	Child Find	C to B Transition	MOU's	High-Cost Child
Maine Care	BDI/DAY-C	COS Process	School Renovation fund	MRTQ, MELDS, SPPS
Mixed Delivery System	LRE Scenarios	ECSE website launch	Discipline/Behavior	Enrollment
Toileting	Data FAQs	Head Start	Data collection tools	Preschool Results Data
Grants 4 ME	State Funds for PreK	PreK Partnership funds	Meet the CDS Directors	MOUs in Mixed Delivery System

Furnishing Preschool Classrooms

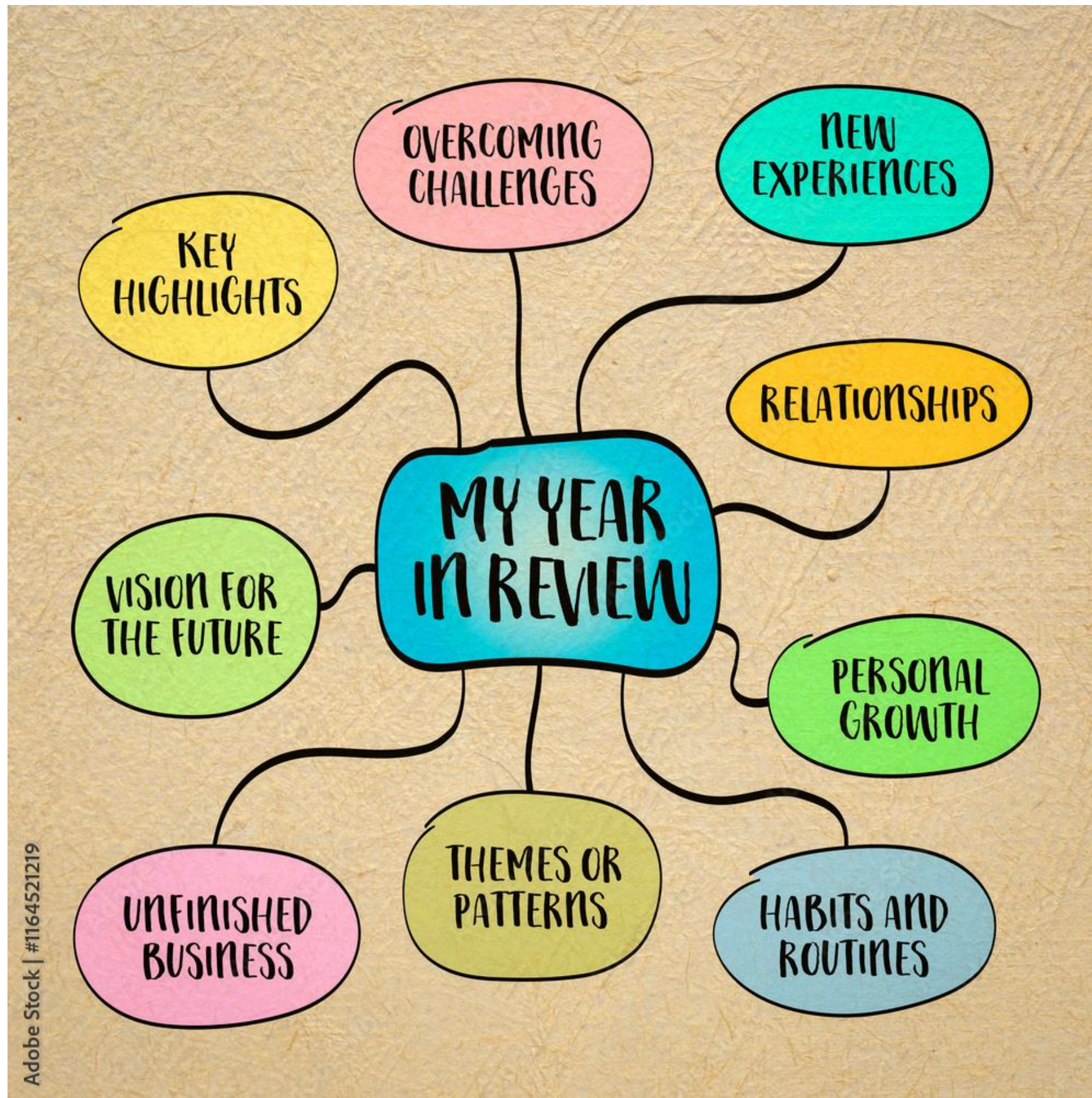
37 classrooms were outfitted with new furniture and classroom materials



Envisioning the Process



Making Dream Come True



What are some of the highlights of this past year for you?

Your DoE Team

DOE/CDS Cohort Contact Information

Transition Leads



Megan Welter

Associate Commissioner of Public
Education at the Department of
Education

Megan.welter@maine.gov



Erin Frazier

Director, Office of Special Services
Birth-22 at the Department of
Education

Erin.Frazier@maine.gov



Sandy Flacke

Deputy Director of Special
Services at the Department of
Education

J.sandy.flacke@maine.gov



Jennifer Hopkins

Assistant Early Childhood Special
Education Transition Coordinator
Department of Education/CDS

Jennifer.l.hopkins@maine.gov



Suzie Perry

Early Childhood Special Education
Consult

Department of Education
suzanne.perry@maine.gov

Fiscal and Data Contacts



Nicole Denis

Director of Finance
Department of Education
nicole.l.denis@maine.gov



Paula Gravelle

School Finance Coordinator
Department of Education
paula.b.gravelle@maine.gov



Barbara McGowen

Director of Fiscal Management,
Special Services B-22
Department of Education
barbara.a.mcgowen@maine.gov



School Finance Manager
Department of Education
ida.batista@maine.gov



Katherine Warren

Education Data Systems Manager
Department of Education
katherine.warren@maine.gov

Your Early Learning and CDS Team

Early Learning Team



Leeann Larsen
Director of Early Learning
Department of Education
Leeann.Larsen@maine.gov



Nicole Madore
Early Childhood Specialist
Department of Education
nicole.madore@maine.gov



Marcy Whitcomb
Public Pre-K Consultant
Department of Education
marcy.r.whitcomb@maine.gov

CDS Team



Dan Hemdal
CDS State Director
Child Development Services
Dan.Hemdal@maine.gov



Jacquelyn Hersom
Assistant 619 Coordinator
Child Development Services
jacquelyn.n.hersom@maine.gov



Lori Whittemore
Director of Preschool Program
Development
Child Development Services
lori.whittemore@maine.gov

Your CDS Regional Directors

Amy Bragg

Gail Page

Pam Scribner

Becky Gilman

Stacey Mitchell

Tammy Verreault

Angela Wing

Heather Henderson





Thank You
*for all your work
this year!*