



MAINE DEPARTMENT
OF EDUCATION

Welcome to Cohorts 3 & 4

Presented by: The Maine DOE's Commissioner's Office and
the Office of Special Services & Inclusive Education



February 11th Agenda

<u>Agenda Item</u>	<u>Time</u>	<u>Name</u>
Welcome and Introductions	5	Megan Welter
ECSE Team	5	Sandy Flacke
DOE Teams	5	Erin Frazier
Map of state and cohorts & List of SAU's	5	Sandy Flacke
MOU Development	5	Sandy Flacke
Q & A		



DOE/CDS Cohort Contact Information

Transition Leads



Megan Welter
Associate Commissioner of Public
Education at the Department of
Education
Megan.welter@maine.gov



Erin Frazier
Director, Office of Special Services
Birth-22 at the Department of
Education
Erin.Frazier@maine.gov



Sandy Flacke
Deputy Director of Special Services at the
Department of Education
J.sandy.flacke@maine.gov



Jennifer Hopkins
Early Childhood Special Education
Project Manager
Department of Education/CDS
Jennifer.l.hopkins@maine.gov



Holly Green
Early Childhood Special Education
Executive Assistant
Department of Education/CDS
Holly.A.Green@maine.gov

DOE/CDS Cohort Contact Information

ECSE Consultants and Coordinators



Lew Collins
Early Childhood Special Education
Consultant
Department of Education
Lewis.Collins@Maine.Gov



Suzie Perry
Early Childhood Special
Education Consultant
Department of Education
suzanne.perry@maine.gov



Julie Giaccone
Early Childhood Special Education
Consultant
Department of Education
Julie.I.giaccone@maine.gov



Jackie Hersom
Early Childhood Special Education
Child Development Services
Jacquelyn.N.Hersom@maine.gov



Trisha Kurt
Early Childhood Special Education
Child Development Services
Trisha.Kurt@maine.gov



Jennifer Austin
July 1, 2026
Early Childhood Special Education
Child Development Services
Jennifer.a.Austin@maine.gov



Erin Patton-Wood
July 1, 2026
Early Childhood Special Education
Child Development Services
Erin.Patton-Wood@maine.gov

DOE/CDS Cohort Contact Information

Child Development Services



Dan Hemdal
State Director
Dan.hemdal@maine.gov



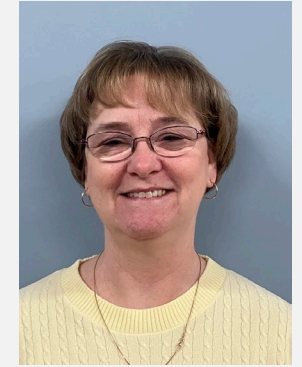
Heather Henderson
Director Preschool Programs
Heather.Henderson@maine.gov



Lori Whittemore
Director of Preschool Development
Lori.whittemore@maine.gov



Ariana Whiting
Part C Director
Early Intervention for ME
Ariana.whiting@maine.gov



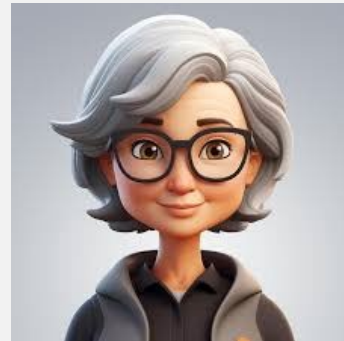
Amy Bragg
Two Rivers & DownEast
Site Director
Amy.l.bragg@maine.gov



Becky Gilman
Aroostook
Site Director
Becky.l.gilman@maine.gov



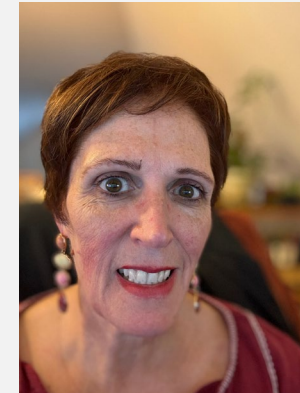
Stacey Mitchell
First Steps/ Opportunities
Site Director
Stacey.Mitchell@maine.gov



Gail Page
MidCoast
Site Director
Gail.page@maine.gov



Pam Scribner
York
Site Director
Pamela.scribner@maine.gov



Tammy Verreault
Reach
Site Director
Tammy.verreault@maine.gov



Angela Wing
PEDS
Site Director
Angela.wing@maine.gov

DOE Early Learning Team



Leeann Larsen
Director of Early Learning
Department of Education
Leeann.Larsen@maine.gov



Nicole Madore
Early Childhood Specialist
Department of Education
nicole.madore@maine.gov



Marcy Whitcomb
Public Pre-K Consultant
Department of Education
marcy.r.whitcomb@maine.gov



Sue Gallant
Early Childhood School-Community
Specialist
Department of Education
Sue.gallant@maine.gov



Stacie McCoy
Head Start Collaboration Director
Department of Education
Stacie.mccoy@maine.gov



Michelle Belanger
Pre-K Partnership Specialist
Department of Education
Michelle.Belanger@maine.gov

DOE/CDS Cohort Contact Information

Data and Fiscal Team



Kimberly Hall
Education Data Systems
Manager
Kimberly.A.Hall@maine.gov



Katherine Warren
Director, Education Data
Department of Education
katherine.warren@maine.gov



Allee Cookson
Education Data Quality Trainer
Department of Education
Alexandra.cookson@maine.gov



Nicole Denis
Director of Finance
Department of Education
nicole.l.denis@maine.gov



Paula Gravelle
School Finance Coordinator
Department of Education
paula.b.gravelle@maine.gov



Ida Batista
School Finance Manager
Department of Education
ida.batista@maine.gov



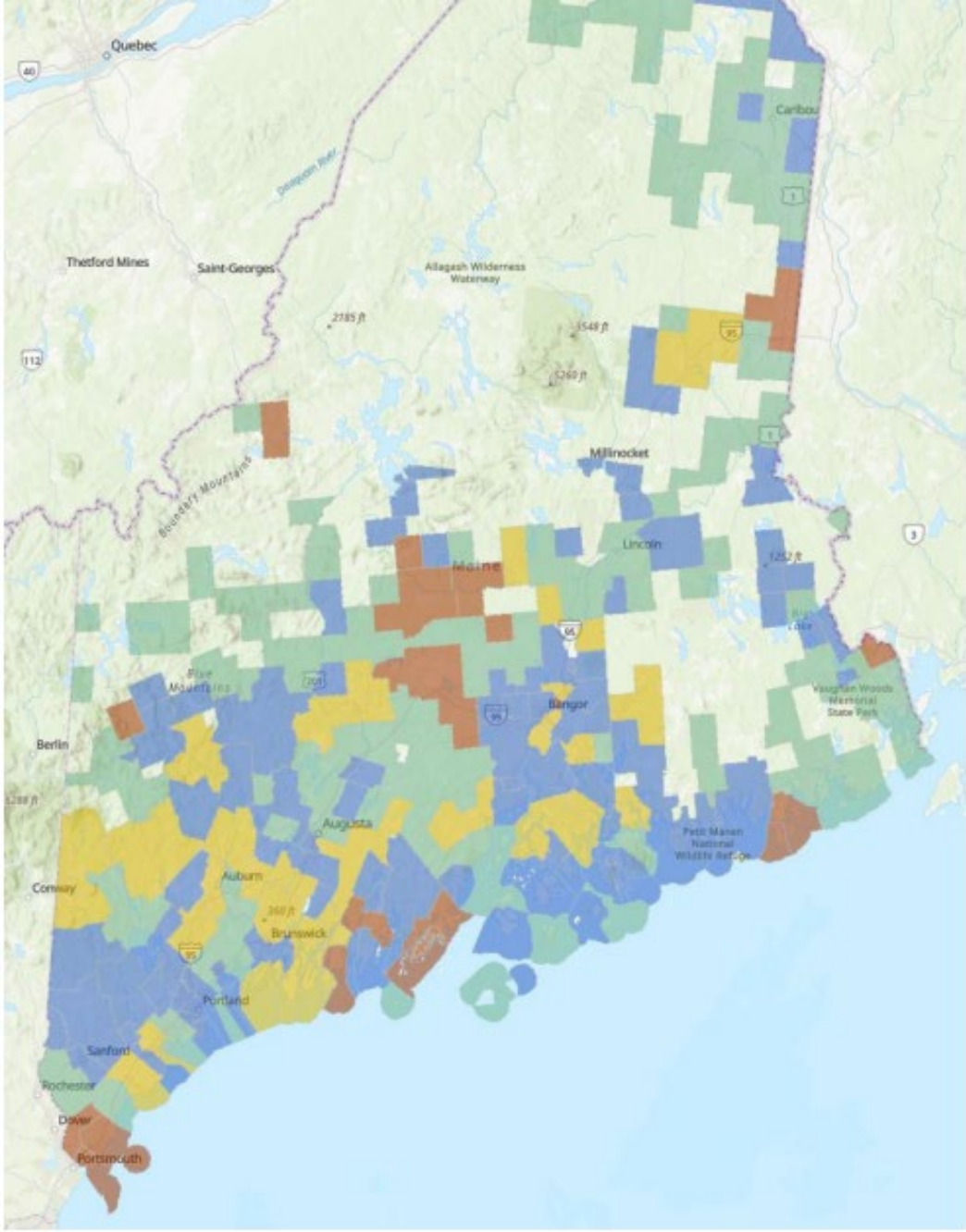
Barbara McGowen
Director of Fiscal Management,
Special Services B-22
Department of Education
barbara.a.mcgowen@maine.gov



Sarah McLaughlin
Department of Education
Fiscal Office Specialist
sarah.mclaughlin@maine.gov

Cohorts 1-4

Cohorts 1-4 List



CDS Aroostook		CDS Downeast		CDS First Step		CDS Midcoast		CDS Opportunities		CDS PECO		CDS Reach		CDS Twin Rivers		CDS York	
Subject 1	Subject 2	Subject 1	Subject 2	Subject 1	Subject 2	Subject 1	Subject 2	Subject 1	Subject 2	Subject 1	Subject 2	Subject 1	Subject 2	Subject 1	Subject 2	Subject 1	Subject 2



Memorandum of Understanding

- MOU's will be developed with each SAU in Cohort 3 prior to August 1, 2026.
 - Services to be provided by the CDS Support and Service Hub
 - Participation in professional development
 - Federal data requirements
 - Participation in IEP meetings for incoming three-year-olds (if assuming FAPE for four-year-olds)
- The MOU will be sent to the SAU for review and signature.
- The MOU is signed by Director Erin Frazier
- A copy will be sent to the SAU
- The MOU must be reviewed and updated in response to unanticipated needs each month.
- CDS Support and Service Hub Survey- sent in follow up email.



Communication

Dr. Sandy Flacke

j.sandy.flacke@maine.gov

207-446-0567

Jennifer Hopkins

Jennifer.L.hopkins@maine.gov

207-660-3954



Questions?



Stay Connected!

Contact information:
Megan.welter@maine.gov
Erin.Frazier@maine.gov
J.sandy.flacke@maine.gov

Find Us Online!



www.maine.gov/doe



[@MaineDOEComm](https://www.youtube.com/@MaineDOEComm)



[@mainedepted](https://www.instagram.com/mainedepted)



[@mdoenews](https://www.twitter.com/mdoenews)



[@MaineDepartmentofEducation1](https://www.facebook.com/MaineDepartmentofEducation1)

