



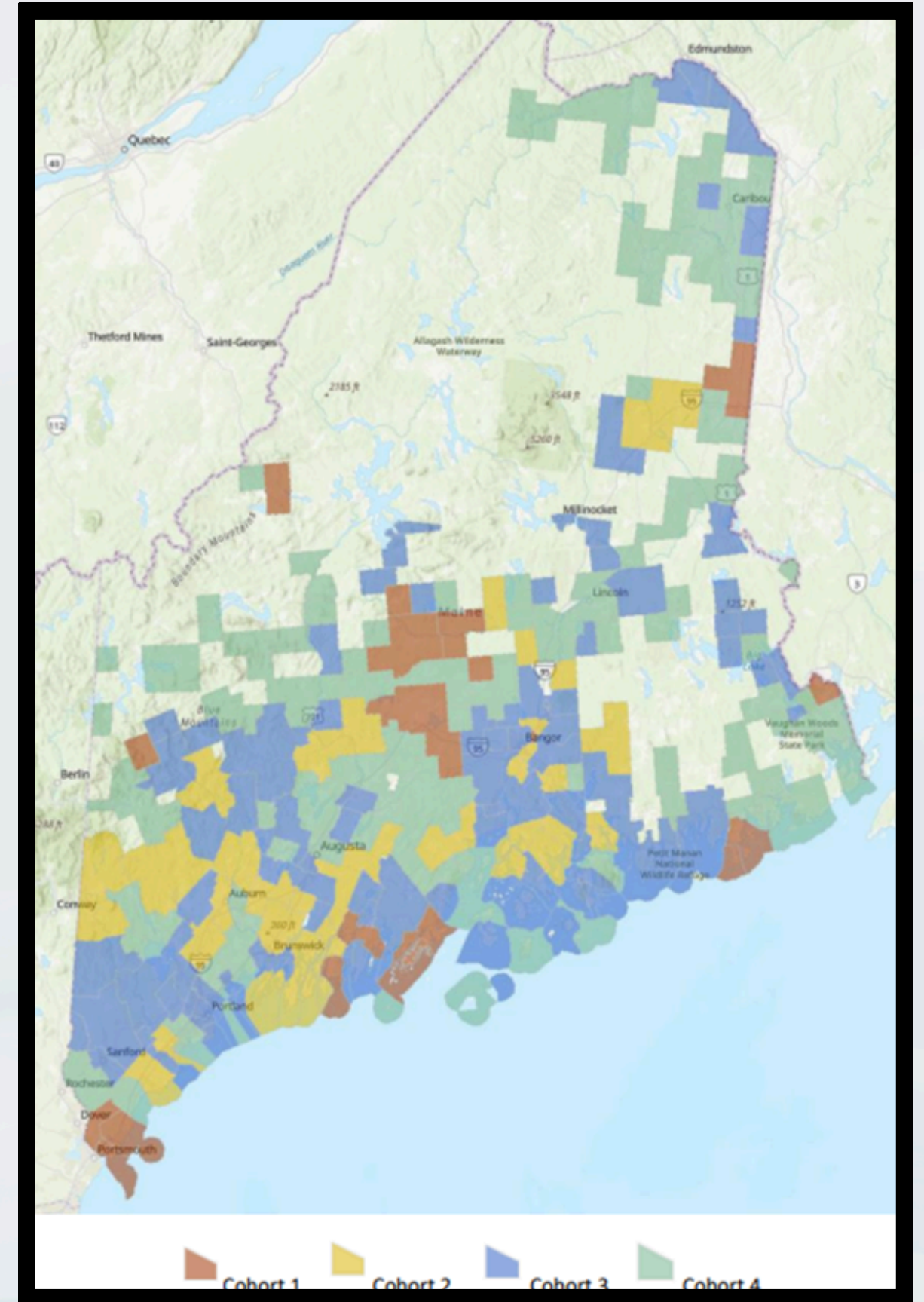
End of Year Celebration!

Recognizing the Accomplishments, Progress, and Benefits of Your Work for Children and Families

Presented by:
Early Childhood Special Education Team

Topics for this session

- **Overview of the 4-year Transition**
- **SAU Activities and Partnerships**
- **State Activities and Partnerships**
- **Future Plans**



The Four Year Transition Process



Preschool Cohort I

CDS
Aroostook

RSU 29

CDS
Downeast

Calais

School
Union #103
Jonesport, Beals

CDS
Midcoast

AOS 98
Boothbay,
Boothbay Harbor

AOS 93
Great Salt Bay

RSU 13

St. George

CDS
Opportunities

Andover
Schools

CDS
Two Rivers

MSAD 4
RSU 80

RSU 68

SAD 12

Veazie
School
Department

RSU 19

CDS
York

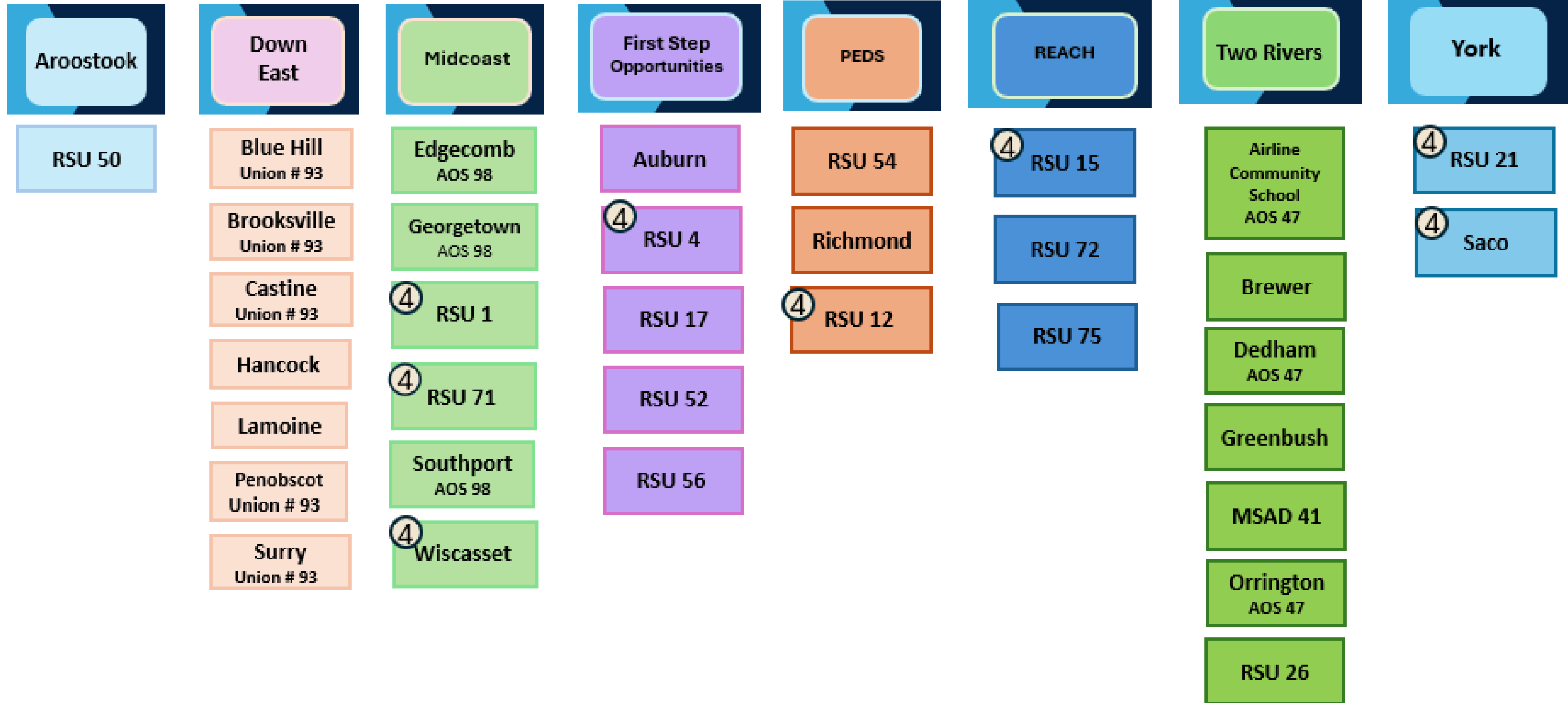
Kittery School
Department

York

RSU 35

he

Cohort 2 2025-2026



Cohort 3 2026-2027

Aroostook

Bridgewater
Grand Isle
Madawaska
RSU 33/MSAD 33
RSU 42/MSAD 42
RSU 45/MSAD 45
RSU 70/MSAD 70
RSU 84/MSAD 14
RSU 86/MSAD 20
RSU 88/MSAD 24
RSU 89
Woodland - SU
122

Down East

Baileyville - AOS 90
Brooklin - SU 76
Cooper - AOS 90
Cranberry Isles - AOS
91
Deer Isle-Stonington
CSD
East Range CSD - AOS
90
Ellsworth
Grand Lake Stream
PLT - AOS 90
Meddybemps - AOS
90
Mount Desert - AOS
91
MSAD 76 - AOS 91
Princeton - AOS 90
RSU 24
RSU 25
RSU 37/MSAD 37
Sedgwick - SU 76
Southwest Harbor -
AOS 91
Talmadge - AOS 90
Tremont - AOS 91
Trenton - AOS 91
Waite - AOS 90

First Step

RSU 16

Midcoast

Bristol - AOS 93
Jefferson - AOS 93
Nobleboro - AOS
93
RSU 08/MSAD 08
RSU 20
RSU 28/MSAD 28 -
Camden/Rockport
CSD
RSU 40/MSAD 40
South Bristol - AOS
93
West Bath

Opportu nities

Byron
Lincoln PLT
RSU 09
RSU 10
RSU 73

PEDS

RSU 02
RSU 11/MSAD
11
RSU 38 (4YOS)
RSU 59/MSAD
59
RSU 83/MSAD
13
Vassalboro
Waterville
Winslow

Reach

Brunswick
Cape Elizabeth
Chebeague Island
Falmouth
Fiddlehead School
of Arts and
Sciences
Gorham
Portland
RSU 05
RSU 14
South Portland
Westbrook
Yarmouth

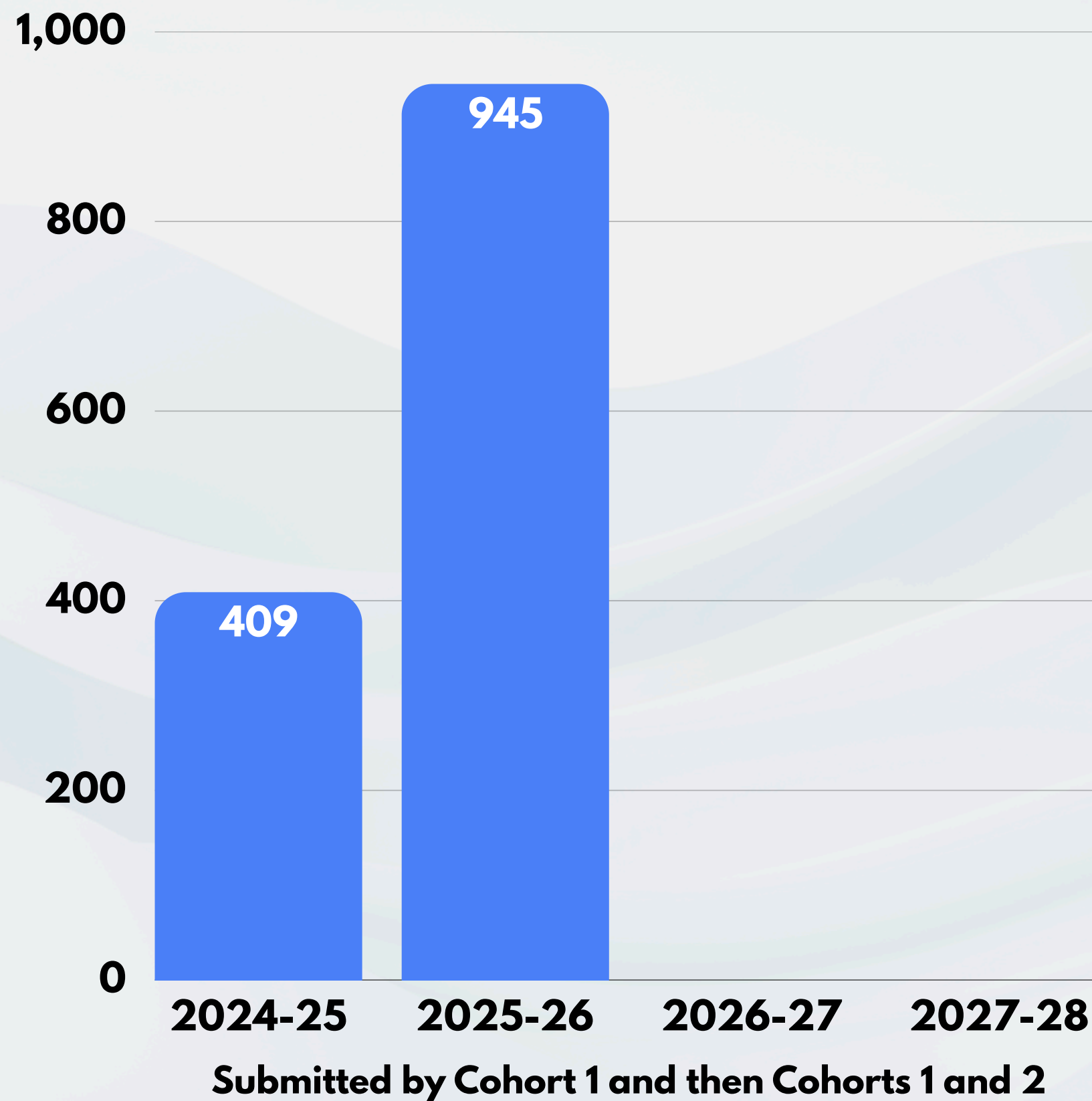
Two Rivers

Bangor
Beaver Cove - SU
60
East Millinocket
Glenburn
Greenville - SU 60
Hermon
Kingsbury PLT
Lowell
Medway
Milford
Millinocket
RSU 30/MSAD
30/AOS 90
RSU 22
RSU 34
RSU 63/MSAD 63
RSU 87/MSAD 23
Seboeis PLT
Shirley - SU 60
Willimantic - SU
60
Woodville PLT

York

Acton
Biddeford
Dayton
RSU 06/MSAD
06
RSU 23
RSU 57/MSAD
57
Sanford

Cohort End of Year Child Count



- Cohort 1 served 409 students by the end of year 1.
- Cohorts 1 and 2 served 945 children by the end of year 2.
- Cohort 1 - 16 SAUs
- Cohort 2 - 37 SAUs
- Cohort 3 - **Projected 95 SAUs**

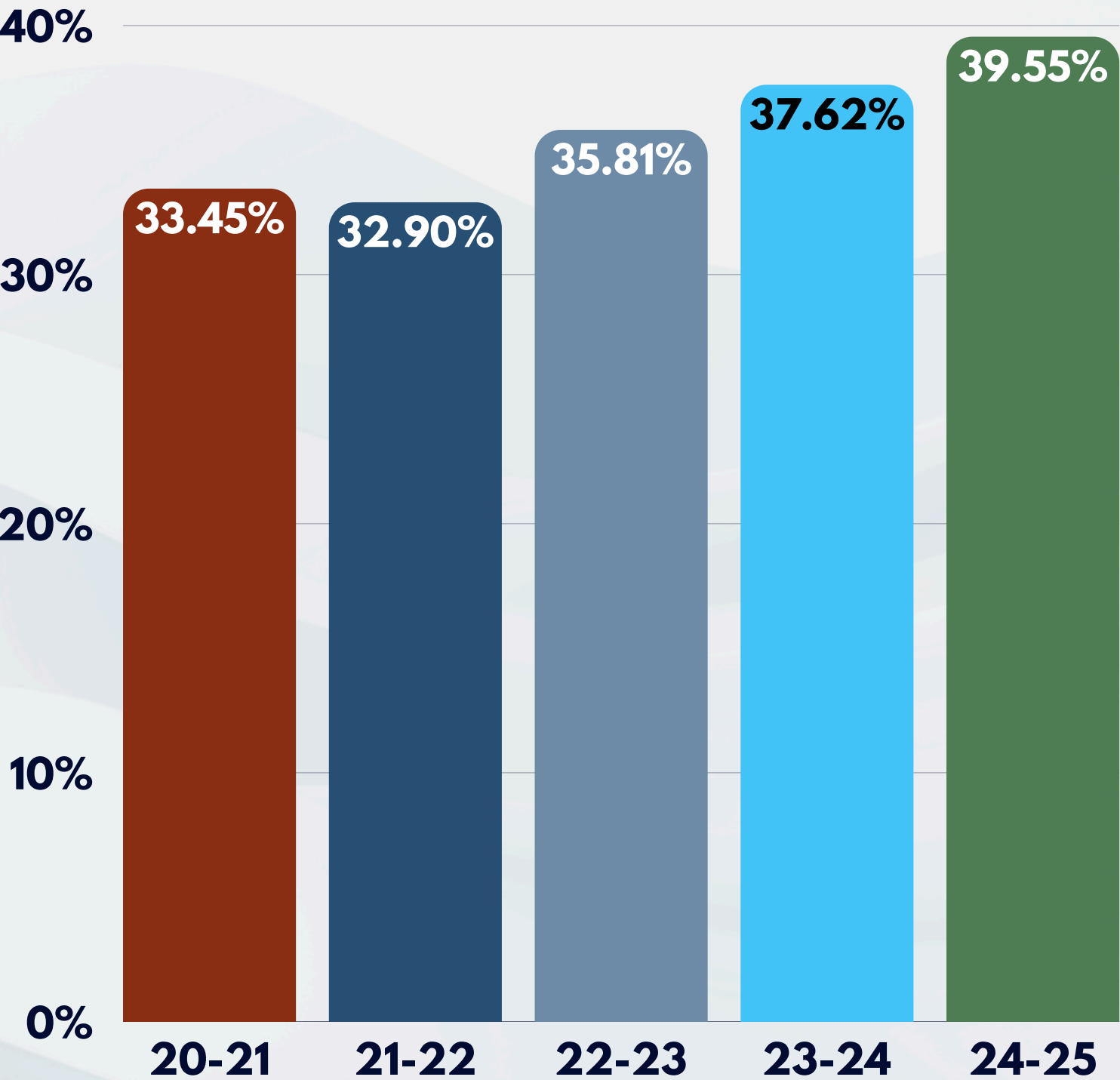
Activities of Cohort Schools

- Creating leadership teams,
- opening new classrooms,
- completing evaluations,
- meetings to transition children from CDS,
- writing IEPs,
- ensuring services in the LRE,
- looking to provide services across a mixed delivery system,
- measuring outcomes, and then
- welcoming children into Kindergarten.



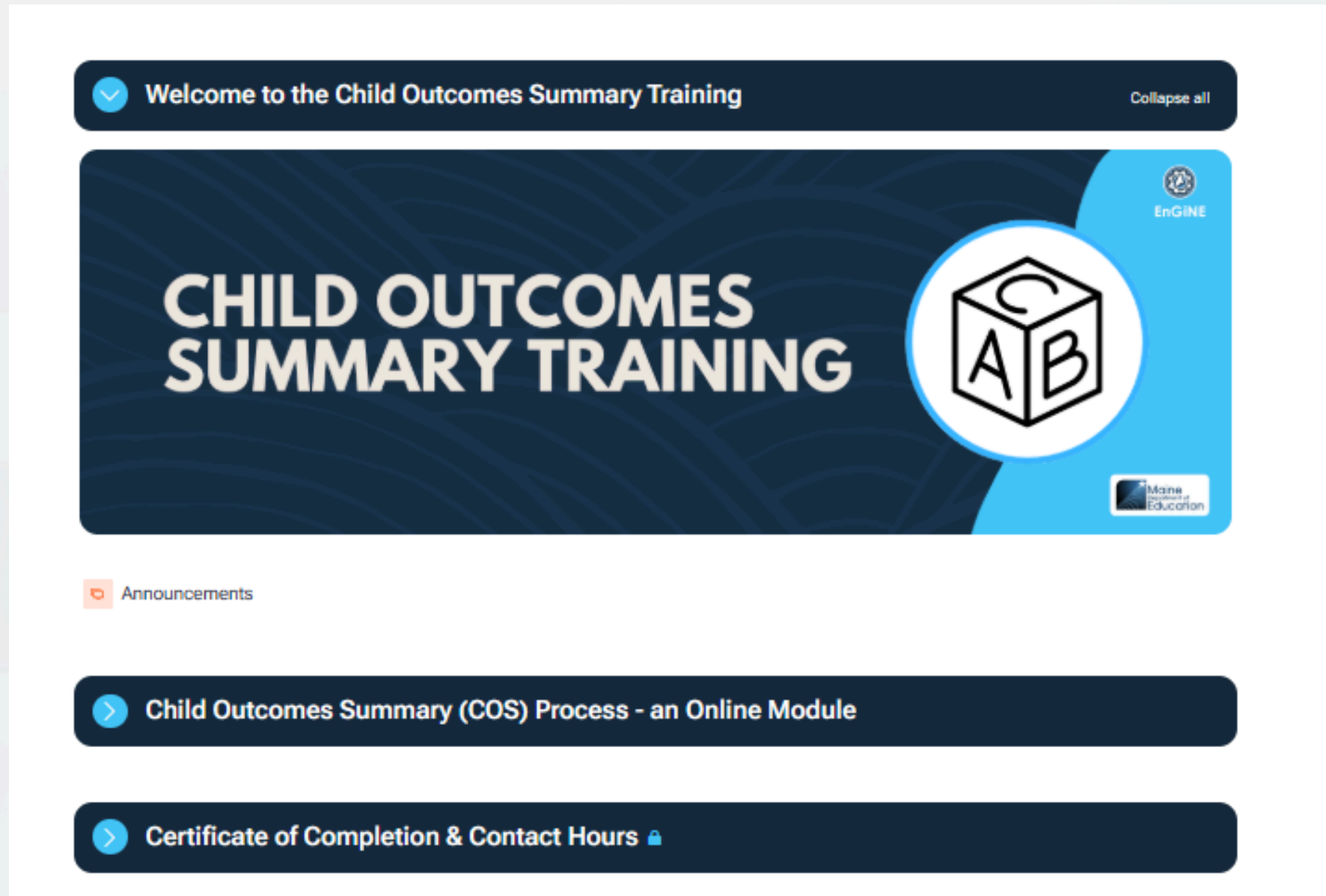
Percentage of Children in Regular Early Childhood Settings

Trend Toward Including Preschool Children with Disabilities in Classrooms with Typically Developing Children



IEP Team are starting with a discussion of how to provide services in the general education setting first.

Child Outcomes Measurement



The screenshot shows a user interface for a training portal. At the top, there is a dark blue header bar with a white checkmark icon, the text "Welcome to the Child Outcomes Summary Training", and a "Collapse all" link. Below this is a large banner with a dark blue background and white text that reads "CHILD OUTCOMES SUMMARY TRAINING". To the right of the text is a white cube icon with the letters "C", "A", and "B" on its faces. In the top right corner of the banner, there is a small "EnGINE" logo and the "Maine Department of Education" logo. Below the banner, there is a section labeled "Announcements" with a red speech bubble icon. Underneath, there are two dark blue buttons with white text and a right-pointing arrow: "Child Outcomes Summary (COS) Process - an Online Module" and "Certificate of Completion & Contact Hours".

- 75 Practitioners enrolled in the COS training
- Cohort 1 Schools Submitted their COS Data on June 30th

State Department of Education Activities



Shared & recorded over 64 Cohort Informational Sessions in two years.



Met with Cohort schools and families quarterly to provide support and guidance.



Created an Information Portal for Professional Development and Communications with SAUs



Created Technical Assistance and guidance documents on five new web pages.

Supporting Services in the Mixed Delivery System

- Meeting with
 - SAUs
 - DHHS Office of Children and Families,
 - Child Care Licensing,
 - Head Start,
 - Main Roads to Quality,
 - Other Local and State representatives



FAPE Onboarding I

Department of Education

Month-by-month descriptive checklist

- Required Actions and
- What to Watch For

FAPE Onboarding

January February March April May June July August September

First Steps Toward Offering FAPE

Establish readiness, complete required submissions, confirm staffing requirements, and ensure key system access is in place, build background knowledge.

Required Actions

Complete and submit the readiness assessment

Complete and submit the readiness assessment to the ECSE team.

- [Early Childhood Readiness Assessment](#)
- [Early Childhood Readiness Assessment Addendum](#) for ECSE: Key Considerations and Essential Questions to be Completed by Public Pre-K programs that will be providing FAPE.

Submit to: ecse.team@maine.gov

Sign and submit the commitment letter

Review, sign, and submit the commitment letter.

- [Charter School Cohort 3 Commitment Letter](#)
- [SAU Cohort 3 Commitment Letter](#)

Submit to: ecse.team@maine.gov

Sign up for EnGiNE

EnGiNE is the Learning Management System through which all communications will be sent to administrators, teachers, and other professionals who work together to provide FAPE in Early Childhood.

- [Welcome to EnGiNE Instructions Sign-Up Flyer](#)
- [Steps to Sign up for EnGiNE Presentation](#)
- [Early Childhood Special Education Portal](#)

Verify special education teacher certification

Watch For

Plan to receive and respond as needed:

- Cohort SAU Data Sheet from CDS Site Directors or Program Managers
- IEP and Transition meeting invitations from CDS

Looking Toward the Future



Continued CDS Operations

- Support SAUs through the Support and Service Hub model
- Partnerships with Cohort SAUs

Support for Current Cohorts

- Monthly Open Office Meetings
- ECSE Coordinator contact
- Web resources, training, and technical assistance
- Fiscal support and guidance

Planning for Future Cohorts

- MOU meetings
- Onboarding page updates
- LMS courses

**Hope you plan to
find some time to
have a summer
adventure!**

**Thank you for all
your work this year!!**



Thank You!



@MaineDepartmentofEducation1



Maine Department of Education



@mainedepted



@MaineDOEComm

Contact Us:

ECSE.Team@Maine.gov

