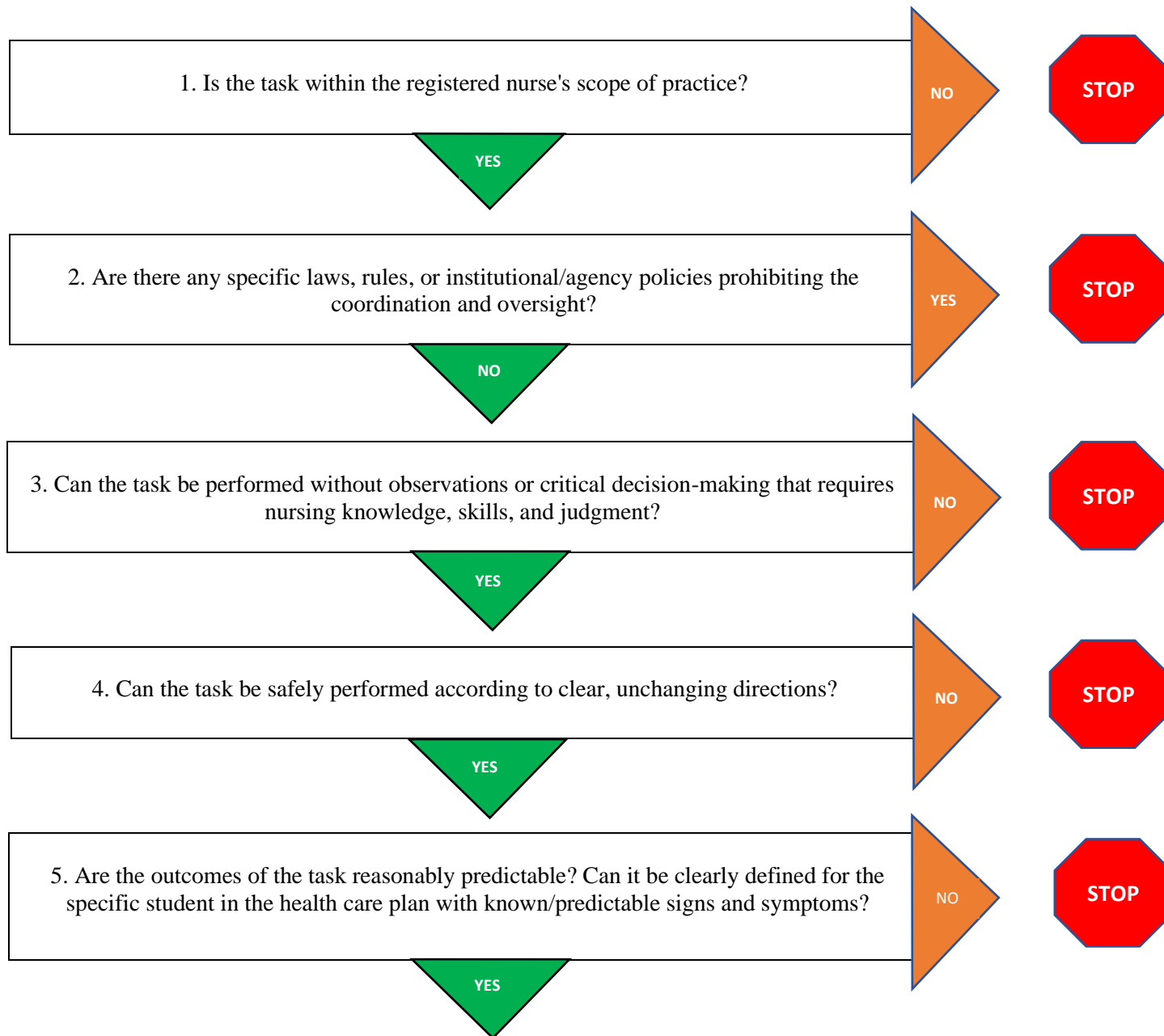


DECISION TREE FOR NURSE COORDINATION AND OVERSIGHT

This decision tree is to assist Registered Nurses in determining if it is appropriate to provide coordination and oversight for a specific nursing task in a particular setting.

It is assumed that a nurse has assessed the student and situation completely and created an individual health care plan in order to answer the questions in this decision tree.



Task itself is generally appropriate for the registered nurse to coordinate and oversee. Follow [Maine BON Rules, Chapter 6 Coordination and Oversight of Unlicensed Assistive Personnel \(UAP\)](#).