



# Farm to ECE & CACFP

---

**Presented by:**  
**Katie Knowles, Farm & Sea to School**  
**Coordinator**

# Today's Session




- Overview: Defining Farm to ECE
- Focus on procurement: how to get started
- Programs & resources to support you
- Breakout discussion + idea sharing





# Ice Breaker

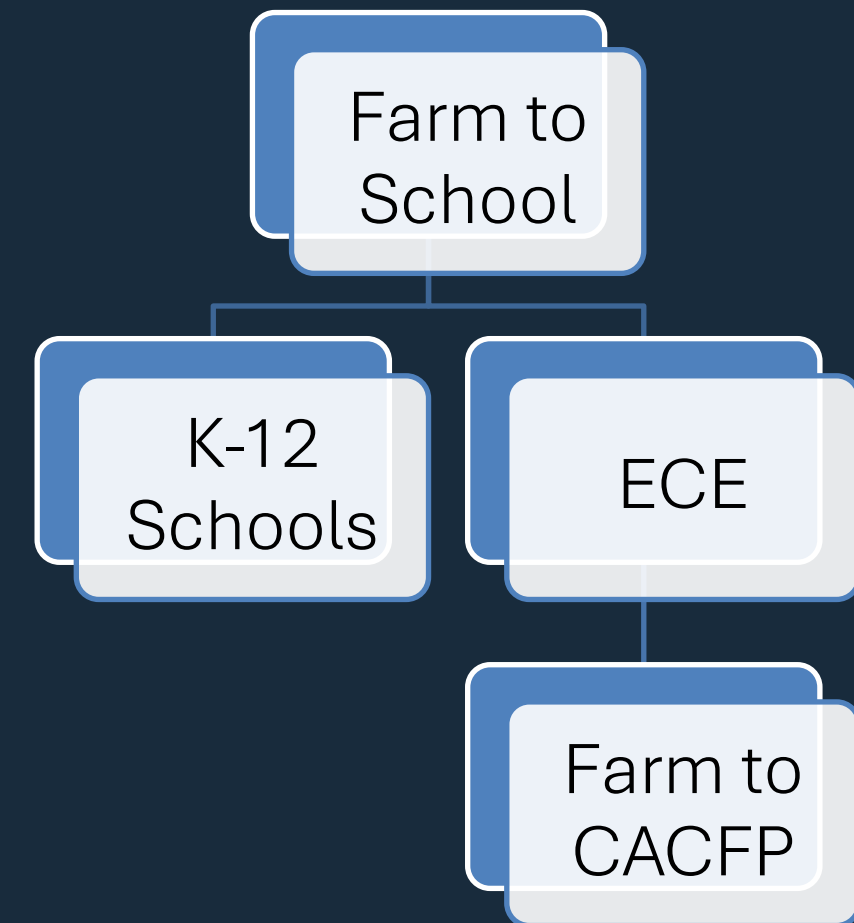
# Meeting you where you're at

<b>Emerging</b> 	Interested in Farm to ECE but haven't really started.
<b>Deepening</b> 	Occasionally participate in Farm to ECE (Gardening, Procurement, Curriculum)
<b>Thriving</b> 	Regularly participate in Farm to ECE activities

# Understanding Farm to ECE/CACFP

**Farm to ECE** is an **umbrella term** that refers to any gardening, educational, or local activities at an early care program.

**Farm to CACFP** refers specifically to Farm to ECE programming in the CACFP



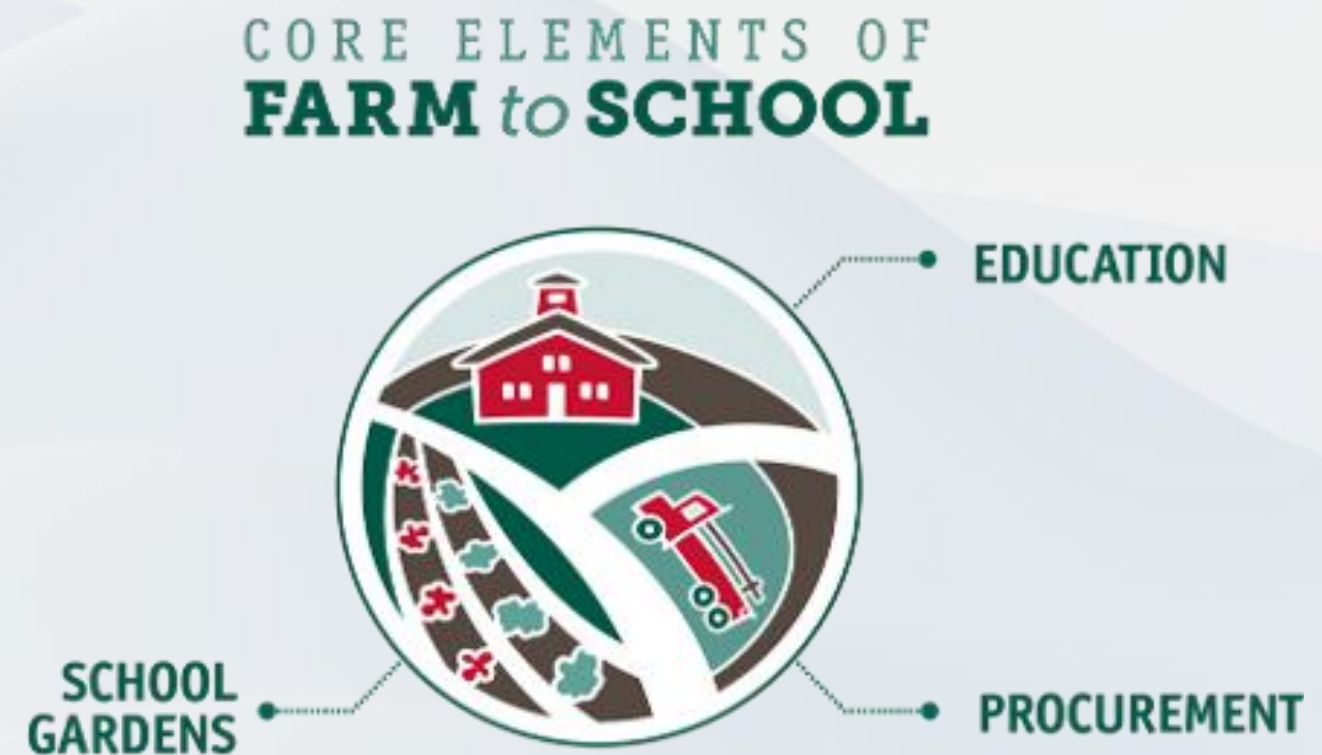
# Farm to ECE Core Elements

## 3 Pillars/Core Elements to any Farm to School/ECE Program:

1. School Gardens (Community)
2. Education (Classroom)
3. Procurement (Cafeteria/Meals)

No “one size fits all” program

*Procurement is our primary focus, but all elements are connected!*



# Farm to ECE: A Triple Win!



## Kids Win!

Kids who participate in Farm to ECE eat more servings of fruits and vegetables, connect w/ their local food system



## Farmers Win!

By shortening supply chains, farmers keep a bigger share of the dollar



## Communities Win!

Communities win when farmers reinvest in their local communities, and kids take what they learn home with them.

# Procurement Models

Procurement Model	Example	Level
<b>Direct Purchasing</b>	Purchase directly from a farmer, farmers' market, CSA (Farm Share)	Most challenging- requires extra coordination & time
<b>Distributor/Food Hub</b>	Native Maine, Peak Season, PFG	Somewhat challenging- especially for small childcare sites
<b>Retail</b>	Grocery stores – Hannaford, Walmart, etc.	Least challenging- many stores already offer some local products, less extra trips



# Child Nutrition Resources



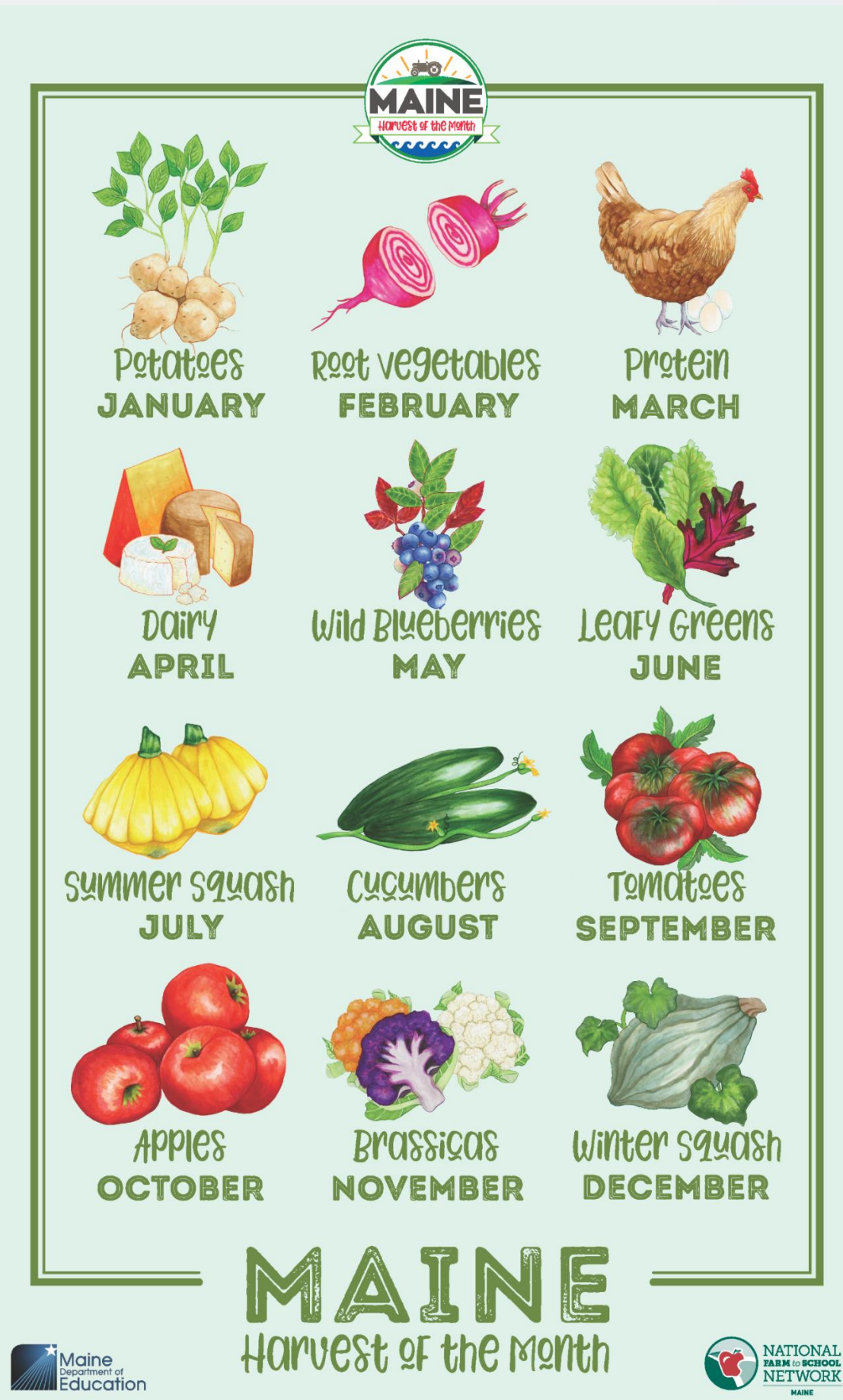
CHILD NUTRITION PROGRAMS  
**FARM & SEA  
TO SCHOOL**

# Maine Harvest of the Month

Harvest of the Month (HOM) is a nationwide marketing campaign that promotes the use of seasonally available, local food in schools.

Each month, a different local product is highlighted, and participating programs pledge to serve the product and promote it through educational materials and activities.





# Join Maine HOM!

## You are pledging to:

- Serve the local HOM product at least 2x per month
- Display HOM materials provided by DOE Child Nutrition

## In return you receive:

- Monthly Toolkits including:
  - Posters
  - Fun facts
  - Recipes
  - Stickers
- Monthly Newsletter email
- Additional resources & support from Farm & Sea to School Coordinator

# Fishermen Feeding Mainers



# Fishermen Feeding Mainers (FFM)

- FFM provides schools and CACFP sponsors with **FREE** Maine caught fish!
- Pickup is in Portland– sometimes at short notice!
- Use the QR Code to sign up for our email list to be notified when fish is available!
  - If you have signed up in years past you are still on the list 😊



## About the Program

Fishermen Feeding Mainers (FFM) is a program that is coordinated in partnership with Maine Coast Fishermen's Association

## Mission

FFM provides direct financial relief to fishermen by helping them supply schools/ECes and families in need with healthy Maine seafood.

# Other Resources:

## Farm and Sea to School



[Local Foods Webinar 8-25-2025](#)

[Local Foods Webinar Slides](#)

State - [Local Foods Fund](#)

[Eligible Local Foods](#)

[Eligible Processed Foods](#)

[Farm to School](#)

[Maine Harvest Lunch Week](#)

[Harvest of the Month](#)

[Maine Fish in Maine Schools](#)

A Partnership with the Maine Coast Fishermen's Association

[Farm Videos](#)

[Our Farm & Sea to School Webpage](#)

Monthly Local Foods Trainings

Technical Assistance & Support

# State & National Resources

# ME Farm to ECE

<https://www.farm2ece4me.org/>

## Maine's statewide hub for Farm to ECE resources & training opportunities

- **Resource Library** for gardening, curriculum, procurement, & more!
- **2 FREE Learning Modules Available!**
  - Farm to ECE Basics
  - Digging Deeper: Unearthing the ABCs of Gardening with Young Children

Farm to Early Care and Education For Maine

About Resources Success Stories Training

# National Resources

## [Association of State Public Health Nutritionists \(ASPHN\)](#)

- Technical Assistance
  - Webinars
  - Monthly Newsletters
  - Office Hours
  - Resource Sharing
- Comprehensive Resource Catalog

## [National CACFP Association \(NCA\)](#)

- Farm to CACFP Resources
  - Flash cards, coloring pages
  - Social media toolkits
  - Nutrition education



# Breakout Groups

Goal: Leave with one idea + one next step

# **Thank you for joining!**

Katie Knowles  
*Farm & Sea to School Coordinator*  
katie.knowles@maine.gov

