

MAINE DEPARTMENT  
OF EDUCATION (DOE)

---

# Assessment Lunch & Learn Office Hours

**December 11, 2024**

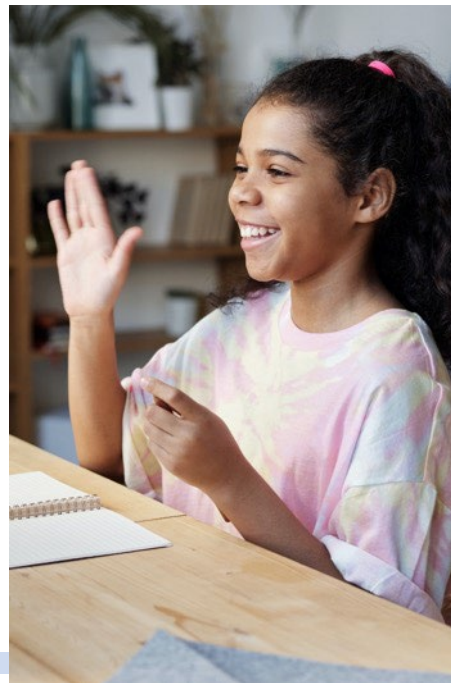
Please post questions you may have in the chat box – we will work to answer them during the session and add them to a Q&A document.

We will begin shortly.

**Presented by:** The Assessment Team



# Mission & Vision



**To promote the best learning opportunities for all Maine students by providing information, guidance, and support to our schools, educators, and leaders and by providing adequate and equitable school funding and resources.**

# The Maine DOE Assessment Team

---

Jodi Bossio-Smith, Director of Assessment

Krista Averill, Assessment Coordinator

Daniella Crone, Office Specialist

Mechelle Ganglfinger, Assessment Coordinator

Leah Jarvis, Business Analyst

Dr. Regina Lewis, NAEP State Coordinator

## Today's Agenda

- ☐ Maine Through Year
- ☐ Maine Science
- ☐ National and International Assessments
- ☐ ACCESS & Alternate ACCESS: Timeline and Next Steps
- ☐ MSAA
- ☐ Questions & Answers

# Maine Through Year Assessment

# 2024-25 Through Year Assessment Schedule

## Winter 2025 (Optional)

January 6 – February 14, 2025

*December 16: Acacia platform opens for pre-administration activities, such as assigning supports and accommodations*

## Spring 2025 (Required)

April 14 – May 30, 2025

*\*The spring administration will be closed April 21-25 for spring break.\**

# Chosen Names in Acacia

- Maine DOE will upload the winter 2025 assessment roster on December 13<sup>th</sup>.
- Because there is not a chosen name field in Acacia, Maine DOE will manually be making updates to chosen names in Acacia after the first roster upload. On December 13<sup>th</sup> you may notice that chosen names have been replaced with birthnames. This should be resolved by the time SAUs can begin pre-administration activities in the platform on Monday, December 16<sup>th</sup>.
- During the window, daily roster uploads will be cross-referenced with a master list of student chosen names, which will be updated weekly.
- Due to the timing of the updates to the master list of student chosen names, there is the small possibility that a student's chosen name may be overwritten (for example for transfers to new schools within one week of the name change request).
- Before printing test tickets, please verify that the name of the student is correct in Acacia. If changes are needed, you may reach out to either NWEA Maine Partner Support (855 430 1777) or Krista Averill ([Krista.Averill@maine.gov](mailto:Krista.Averill@maine.gov)).

# Register for Winter 2025 NWEA PL Offerings

## Student-Centered Assessment Literacy\*

- Session 1: What is assessment literacy? What helps make assessment practices and processes matter to students?
  - January 16, 3:00-4:30 PM
- Session 2: Which structures and strategies support a culture of learning? How do you use classroom assessment tools to build assessment literacy?
  - January 30, 3:00-4:30 PM

*\*Participants may attend either session or both sessions. Attendance at session 1 is not necessary for attendance at session 2.*

# Register for Winter 2025 NWEA PL Offerings

## Applying Classroom Assessment Standards\*

- Session 1: What existing frameworks can guide teachers' classroom assessment practices and inform decisions?
  - January 14, 3:00-4:30 PM
- Session 2: What are the main components of quality assessment practices?
  - February 10, 3:00-4:30 PM

## Using Achievement Level Descriptors to Ensure Classroom Rigor

- February 27, 3:00-4:30 PM

*\*Participants may attend either session or both sessions. Attendance at session 1 is not necessary for attendance at session 2.*



# Class Profile Update: The addition of the Projected Proficiency Tab

December 2024 Release

map Class Profile


Logged in as: Teacher, A. Instructorson  
Home | Help | Contact | Change Password | Logout

School: Ivon Middle School > Tested: Fall 2023-24 > Rostered: Fall 2023-24 | [Change selections](#)

Instructor: Instructorson, Teacher A ▼ Class: Homeroom ▼ Subject: Mathematics ▼ Course: Math K-12 ▼

**NEW! for December 2024**

Test Details | Instructional Areas | **Projected Proficiency**

Linking Study ⓘ  
Your State ▼  Update

# Our New Projected Proficiency Tab!

- The new Class Profile Projected Proficiency tab provides class and student-level projected proficiency data for State Linking Studies, ACT, and SAT.
- The data provided on the new Class Profile Projected Proficiency tab replaces the functionality available in the legacy Class Breakdown by Projected Proficiency report that was retired in the summer of 2024.

First, select which linking study to use to view projected proficiency.

Maine partners will utilize the NWEA Default Linking Study.

Partners will also have the option to utilize the projected proficiency for ACT or SAT tests.

- ACT college readiness projections are available for grades 5-10 in reading and mathematics.
- SAT college readiness projections are available for grades 5-9 in reading and mathematics.

The screenshot displays the 'map Class Profile' interface. At the top, it shows the user is logged in as 'Teacher, A. Instructorson' with links for Home, Help, Contact, Change Password, and Logout. Below this, the school and testing information are listed: 'School: Ivon Middle School > Tested: Fall 2023-24 > Rostered: Fall 2023-24 | [Change selections](#)'. The main section contains four dropdown menus: 'Instructor' (Instructorson, Teacher A), 'Class' (Homeroom), 'Subject' (Mathematics), and 'Course' (Math K-12). A red arrow points to the 'Course' dropdown with the text 'NEW! for December 2024'. Below these are three tabs: 'Test Details', 'Instructional Areas', and 'Projected Proficiency' (which is highlighted in blue). Under the 'Projected Proficiency' tab, there is a 'Linking Study' section with a dropdown menu set to 'Your State' and an 'Update' button. This entire section is enclosed in a red rectangular box.

As you move down the report you can quickly see how many students in your class are projected to be in each proficiency category by spring based on average growth.

map

Class Profile

Logged in as: Teacher, A. Instructorson

[Home](#) | [Help](#) | [Contact](#) | [Change Password](#) | [Logout](#)

School: Ivon Middle School > Tested: Fall 2023-24 > Rostered: Fall 2023-24 | [Change selections](#)

Instructor

Instructorson, Teacher A

Class

Homeroom

Subject

Mathematics

Course

Math K-12

NEW! for December 2024

Test Details

Instructional Areas

Projected Proficiency

Linking Study

Your State

Update

Homeroom

Class Profile

Projected Proficiency Overview

Homeroom | Grade 5 | Ivon Middle School | Math K-12 | Projected with Your State Linking Study Spring 2023-2024

Most students are projected to not be proficient

Number of students by proficiency category

Advanced	3
Proficient	4
Basic	11
Below Basic	2

[More Information about this chart](#)

Rostered: Fall 2023-24  
Tested: Fall 2023-24

Class Profile

About Spring Cut Scores

Homeroom | Grade 5 | Ivon Middle School | Math K-12 | Projected with Your State Linking Study Spring 2023-2024

The selected linking study defines the cut scores for each proficiency category, and whether or not that category is considered to be proficient. Categories and cut scores are grade specific.

Categories	RIT Score Range
Advanced	223-250 (Proficient)
Proficient	215-222 (Proficient)
Basic	192-214
Below Basic	100-191

[More Information about this chart](#)

Rostered: Fall 2023-24  
Tested: Fall 2023-24

This module provides the cut scores, called “RIT score ranges”, for each proficiency category based on the linking study definitions for the selected assessment. The cut scores are based on the RIT scale and are grade-specific.

**Class Profile**

Logged in as: Teacher, A. Instructorson  
[Home](#) | [Help](#) | [Contact](#) | [Change Password](#) | [Logout](#)

School: Ivon Middle School > Tested: Fall 2023-24 > Rostered: Fall 2023-24 | [Change selections](#)

**Instructor**  
 Instructorson, Teacher A

**Class**  
 Homeroom

**Subject**  
 Mathematics

**Course**  
 Math K-12

Test Details

Instructional Areas

Projected Proficiency

Linking Study ⓘ  
 Your State
 

Update

## Homeroom

Class Profile

**Projected Proficiency Overview**  
 Homeroom | Grade 5 | Ivon Middle School | Math K-12 | Projected with Your State Linking Study Spring 2023-2024

Most students are projected to not be proficient
 

Number of students by proficiency category	
Advanced	3
Proficient	4
Basic	11
Below Basic	2

[More Information about this chart](#)

Rostered: Fall 2023-24  
 Tested: Fall 2023-24

Class Profile

**About Spring Cut Scores**  
 Homeroom | Grade 5 | Ivon Middle School | Math K-12 | Projected with Your State Linking Study Spring 2023-2024

The selected linking study defines the cut scores for each proficiency category, and whether or not that category is considered to be proficient. Categories and cut scores are grade specific.
 

Categories	RIT Score Range
<b>Grade 5</b>	
Advanced	223-250 (Proficient)
Proficient	215-222 (Proficient)
Basic	192-214
Below Basic	100-191

[More Information about this chart](#)

Rostered: Fall 2023-24  
 Tested: Fall 2023-24

Conduct student-level analysis by examining projected proficiency data for each student.

- RIT Score
- Projected spring RIT score
- Projected spring proficiency category

**map Class Profile**

School: Ivon Middle School > Tested: Fall 2023-24 > Rostered: Fall 2023-24 | [Change selections](#)

Home | Help | Contact | Change Password | Logout

Logged in as: Teacher, A. Instruction

Instructor: Instructor, Teacher A | Class: Homeroom | Subject: Mathematics | Course: Math K-12

**NEW! for December 2024**

Test Details | Instructional Areas | **Projected Proficiency**

Linking Study: Your State | Update

### Homeroom

**Class Profile**

**Projected Proficiency Overview**

Homeroom | Grade 5 | Ivon Middle School | Math K-12 | Projected with Your State Linking Study Spring 2023-2024

**Most students are projected to not be proficient**

Number of students by proficiency category

Advanced	3
Proficient	4
Basic	11
Below Basic	2

[More information about this chart](#)

Rostered: Fall 2023-24  
Tested: Fall 2023-24

**Class Profile**

**About Spring Cut Scores**

Homeroom | Grade 5 | Ivon Middle School | Math K-12 | Projected Linking Study Spring 2023-2024

The selected linking study defines the cut scores for proficiency category, and whether or not that category is considered to be proficient. Categories and cut scores specific.

Categories	RIT Score Range
Advanced	223-250 (Proficient)
Proficient	215-222 (Proficient)
Basic	192-214
Below Basic	100-191

[More information about this chart](#)

Rostered: Fall 2023-24  
Tested: Fall 2023-24

**Class Profile**

**Projected Proficiency by Student**

Homeroom | Grade 5 | Ivon Middle School | Math K-12 | Projected with Your State Linking Study Spring 2023-2024

Student Name	Grade	Fall 2023-2024 RIT	Projected Spring RIT Score	Projected Spring Category
Allen, Cheryl	5	174	184	Below Basic
Cohen, Carlos	5	200	210	Basic
Collins, Lyle	5	196	206	Basic
Delgado, Tiffany	5	206	216	Proficient
Francis, Whitney	5	187	197	Basic
George, Loretta	5	190	200	Basic
Gray, Betty	5	200	210	Basic
Hall, Ronald	5	186	196	Basic
Jackson, Victor	5	189	199	Basic
Johnson, Rebecca	5	206	216	Proficient
Lewis, Steve	5	178	188	Below Basic
Locke, Terrilyn	5	218	228	Advanced
Love, Terry	5	199	209	Basic
Perez, Elizabeth	5	197	207	Basic
Perry, Jeffrey	5	217	227	Advanced
Powell, Joseph	5	186	196	Basic
Reeves, Ricky	5	210	220	Proficient
Sanchez, Ronald	5	194	204	Basic
Sanders, Katherine	5	218	228	Advanced
Santos, Patrick	5	209	219	Proficient

[More information about this chart](#)

Rostered: Fall 2023-24  
Tested: Fall 2023-24

# Other Resources/FAQ

[NWEA News.Introducing the new Projected Proficiency tab in the Class Profile report](#)

**Q: Is there projected proficiency data for instructional areas?**

A: No. Projected proficiency is only provided for overall RIT scores.

**Q: What is a linking study and where can I find it?**

A: See NWEA Connection article: [What is a linking study and where can I find it?](#)

**Q: How do reports calculate projected proficiency?**

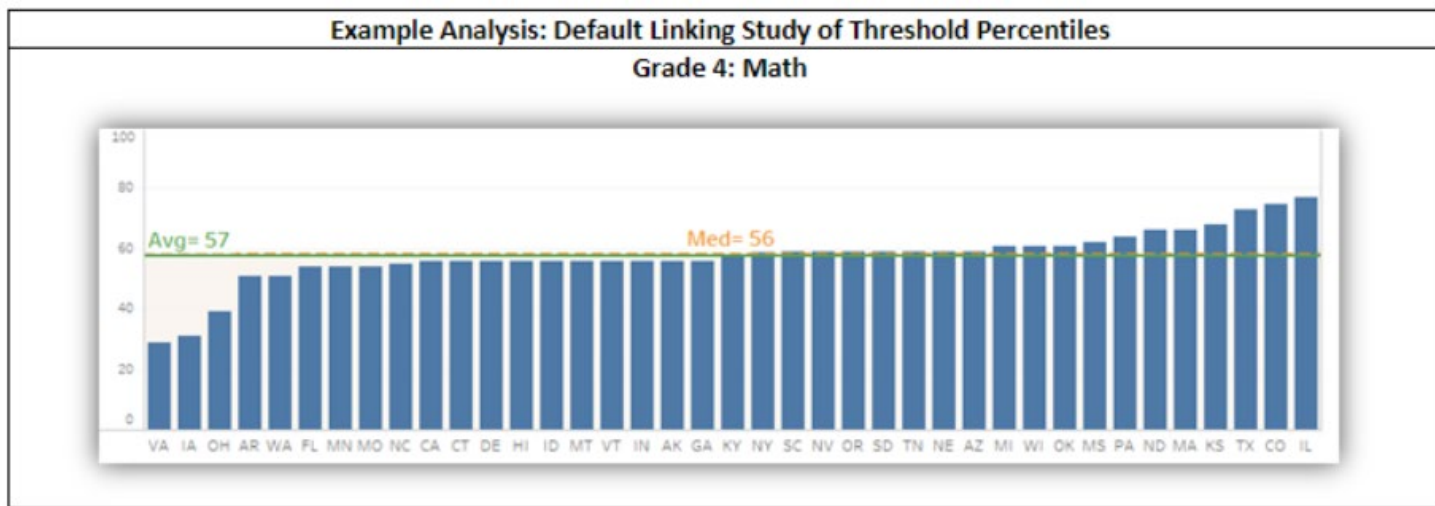
A: See NWEA Connection article: [How do reports calculate projected proficiency?](#)

**Q: How is projected proficiency calculated for states without a linking study?**

A: See NWEA Connection article: [Projected proficiency and states with no linking \(alignment\) studies](#) and NWEA Connection product update post: [Default linking study – providing partners with a better way to project proficiency](#)

# Default Linking Study

- Maine does not currently have a linking study with NWEA.
- The default linking study values are currently being used to generate MAP Growth reports.
- Default linking study values are based on the 39 active state linking studies from spring 2017 to spring 2019.





# Math K-12 Proficiency Thresholds

(July 2022 – New Default Linking Study)

	Below Standards		Proficient		Advanced	
Grade	Median RIT	Percentile	Median RIT	Percentile	Median RIT	Percentile
3	N/A	1 – 52	202	53	214	82
4	N/A	1 – 55	213	56	226	84
5	N/A	1 – 61	224	62	237	86
6	N/A	1 – 58	227	59	240	84
7	N/A	1 – 60	232	61	246	85
8	N/A	1 - 62	237	63	252	86

# Reading K-12 Proficiency Thresholds

(July 2022 – New Default Linking Study)

	Below Standards		Proficient		Advanced	
Grade	Median RIT	Percentile	Median RIT	Percentile	Median RIT	Percentile
3	N/A	1 - 58	201	59	214	85
4	N/A	1 - 57	208	58	220	82
5	N/A	1 - 56	214	57	226	83
6	N/A	1 - 56	218	57	230	82
7	N/A	1 - 55	221	56	236	86
8	N/A	1 - 55	224	56	238	83

# Maine Through Year Assessment:

## *Whom do I contact?*

### NWEA Maine Partner Support

(855) 430-1777

[techsupport@nwea.org](mailto:techsupport@nwea.org)

- Technical issues with the Acacia platform
- Technical issues with the State Solutions Secure Browser
- Technical issues with the MARC (MAP Growth) platform, including rostering in MARC

### Maine DOE MEDMS Support Team

[MEDMS.Support@maine.gov](mailto:MEDMS.Support@maine.gov)

(207) 624-6896

- Help determining if a student is eligible for the Maine Through Year Assessment, based on information entered by the SAU into Synergy

### Maine DOE Assessment Team

[Krista.Averill@maine.gov](mailto:Krista.Averill@maine.gov)

(207) 215-6528

- Questions related to assessment content, accessibility, scoring, and reporting
- Policy-related questions
- Any problems that NWEA Maine Partner Support or the MEDMS Support Team are not able to resolve – For NWEA Partner Support, if you have a case number, please provide.

# Maine Science Assessment

# Maine Science Assessment

## Reporting

You can now generate a Student Score Data File CSV with more than one year of data.

*Note:* The file will automatically include the most recent administration's data.

**Create Extract**

**Filters**

Assessment Program: MSARx

SAU: Select

School: Select

Grade: Select

Prior Report Years: Note Current Year 2024 always included

2023x

☒ Select All

Ok Cancel

# Maine Science Assessment

## *District User Accounts in the Kite Reporting Platform*

It is the SAU's responsibility to determine for whom access to SAU-level data is appropriate, considering legitimate educational interest.

Only Maine DOE and Kite Service Desk can create District User accounts.

- The Kite Service Desk and Maine DOE can create District User accounts for individuals identified as District Assessment Coordinators in NEO.
- Only Maine DOE can create other District User accounts with written approval (i.e., email) from the District Assessment Coordinator, as identified in NEO.

# Understanding the Maine Science Assessment & Utilizing Score Reports: Video Recording

# Maine Science Assessment

## *Looking Ahead to Spring 2025:*

*Manuals and guides are posted when finalized - Available Now:*

- [Score Interpretation Guide](#)
- [Kite Reporting Platform Guide](#)
- [Assessment Administration Manual](#)
- [Practice Tests and Tutorials](#)

## **Changes to the Administration**

- ALL Grade Levels: Removal of Session 4 (Student Questionnaire)
- High School ONLY: Sessions 1, 2, and 3 reduced from 60 minutes each to 50 minutes each

## **Administration Schedule**

- High School: April 2-17, 2025
- Grades 5 and 8: May 12-23, 2025



# Maine Science Assessment: *Whom do I contact?*

## Kite Service Desk

[Kite-support@ku.edu](mailto:Kite-support@ku.edu)

**(855) 277-9752**

- Accessing reports from Spring 2023 and Spring 2024
- Creating District User accounts for individuals identified as DACs in NEO

## Maine DOE Assessment Team

[Krista.Averill@maine.gov](mailto:Krista.Averill@maine.gov)

**(207) 215-6528**





- Questions related to assessment content, accessibility, scoring, and reporting
- Policy-related questions
- Any problems that Kite Service Desk is not able to resolve, including creating District User accounts

Please note that the ADAM platform is closed to Maine SAUs/schools until early spring.

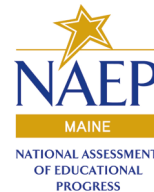
# National and International Assessments

Wrapping up 2024 and moving forward

# National and International Assessments – NAEP 2025

	Long-Term Trend 			Field Test 				
Sample Level	National			National			Puerto Rico	
Grade or Age	Age 13	Age 9	Age 17	4	8	12	4	8
Subject (s)	<div><div><div><div>+</div><div>−</div></div><div><div>÷</div><div>×</div></div></div><div></div></div> Math and Reading			<div><div><div><div>+</div><div>−</div></div><div><div>÷</div><div>×</div></div></div><div></div></div> Math and Reading			<div><div><div><div>+</div><div>−</div></div><div><div>÷</div><div>×</div></div></div> Math</div>	
Devices	Paper-based Assessment			School and NAEP devices				
Number of Sessions	1 or 2			2 (1-2 if school devices)				
Students per Session	25 or 50			25 (25-50 if school devices)				
Session Duration	90 minutes			120 minutes				
Questionnaires	School			Student, Teacher, and School				
Assessment Window	Oct 7 – Dec 13, 2024	Jan 6 – Mar 14, 2025	Mar 17 – May 23, 2025	Jan 27 – Mar 7, 2025				

# National and International Assessments - NAEP



*Preparations for Main/State NAEP 2026 are underway expect changes related to use of student devices!*

**NAEP 2025:** Long Term Trend Age 13 administration window is open

**NAEP 2024:** Date of results released to be announced SOON

## **\*\*Reminder: NAEP Updates**

- School Device Field Study 2025
- Operational for devices meeting NAEP Technical Requirements 2026
- New Mathematics and Reading Frameworks 2026
- New Science Framework 2028

# **ACCESS and Alternate ACCESS**

Maine's general and alternate assessments of English language proficiency

Coordinator: Mechelle Ganglfinger

# ACCESS Timeline

WIDA AMS test setup is now available for registrations

12/12/24 - 12/13/24: SAUs receive materials boxes

12/12/24: Additional materials ordering open to SAUs through February 21<sup>st</sup>, 2025

- **Assessment Window: January 6<sup>th</sup> – February 28<sup>th</sup> 2025**

3/11/25: SAU deadline for return of secure and test materials to DRC.

4/30/25: Reports available in WIDA AMS

5/16/25 - 5/19/25: Printed reports available in SAUs

# Receiving & Ordering Materials

Please check to ensure all materials received match the packing lists included in your boxes. Remember all materials are secure and will need to be returned in the yellow boxes in which they were received.

If additional materials are needed including paper version of the assessment orders can be placed through the WIDA AMS secure portal.



# Receiving & Ordering Materials

The screenshot shows a web application interface for 'Materials Ordering'. At the top, there is a navigation bar with five tabs: 'Materials', 'Accountability Form', 'Additional Materials', 'Material Ordering' (which is highlighted), and 'Return Materials Receipt Report'. Below the navigation bar, the page title 'Materials Ordering' is displayed. A light blue banner contains a speech bubble icon and the text: 'Materials Ordering allows the user to enter quantities of materials needed for paper tests.' Below this, a red asterisk is followed by the text '\* Indicates required fields'. The form contains three dropdown menus: 'Administration' with the selected value 'ME ACCESS for ELLs - 2024-202' and a red asterisk, 'District' with the selected value '(All)', and 'School' with the selected value '(All)'. At the bottom of the form is a blue button labeled 'Show Materials'.

- To place a new order, select an administration, district, and the school from the drop-down menus, and click Show Materials
- In the Additional Materials Entry grid, enter quantities for the additional materials the district requires. After all quantities are entered, click the **Complete** button.

*You may click on the instructions tab to see a detailed list of directions to complete your order*



# Kindergarten ACCESS Student Response Booklets

The Maine Department of Education received an important message from WIDA AMS this week regarding the Kindergarten ACCESS Student Response Booklet.

Due to a printing error, the page numbers began with “5”, instead of the intended “1”.

The materials being received this week will include the Kindergarten ACCESS Student Response Booklets with the incorrect page numbers.

**These booklets are not to be distributed**

# Kindergarten ACCESS Student Response Booklets Cont.

WIDA DRC is actively working on reprinting all Kindergarten ACCESS Student Response Booklets. The corrected booklets will be delivered in early January.

SAUs will be provided with the delivery date as soon as WIDA AMS informs DOE of this date.

SAUs will also be provided with information on how to identify the corrected booklets.

Additional material order requests for Kindergarten ACCESS Student Response Booklets are on hold until the replacement booklets are available.

**Misprinted booklets may be returned with all other secure materials at the end of the testing window.**

# WIDA and DRC Helpful Resources

**Online Help:** Provides step-by-step instructions to help complete tasks in Import Management, Student Management and Test Management. Find Online Help by **selecting the question mark icon** in the upper right corner of the applications or [find all the topics in one place](#).

**Knowledge Articles:** Select the Knowledge Articles button from the WIDA AMS landing page to browse or search for your desired topic.

**WIDA Assessment Webinars:** WIDA and DRC offer webinars on a variety of topics, from managing students and registrations to technology troubleshooting. View the full list of upcoming and recorded webinars on the [Webinars](#) page in the WIDA Secure Portal.

# Upcoming WIDA Assessment Webinars

**ACCESS Test Security and Test Monitoring** Tuesday, December 10 at 2:00pm-3:00pm

**ACCESS Technology Troubleshooting** Thursday, December 12 at 2:00pm-3:00pm

*You can learn more and add these upcoming webinars to your calendar on the [Webinars](#) page (login required).*

Recordings for Assessment Webinars are posted to the WIDA Secure Portal on the Webinars page within a week of the presentation. Technology-related webinar links can also be found in [WIDA AMS](#). On the landing page, select My Applications > General Information > Documents and filter the Document Type by Memos/Documents

# WIDA ACCESS & Alternate ACCESS

## *Whom do I contact?*

### WIDA Client Services Center

1-866-276-7735

[Help@WIDA.us](mailto:Help@WIDA.us)

- WIDA Secure Portal account creation
- Assessment training modules
- Self-paced e-learning resources

### Data Recognition Corporation (DRC)

1-855-787-9615

[WIDA@datarecognitioncorp.com](mailto:WIDA@datarecognitioncorp.com)

- WIDA AMS account creation
- Technical issues with the WIDA AMS platform, including finding students, assigning accommodations, and creating test sessions
- Technical issues with the installation of the DRC lockdown browser

### Maine DOE Assessment Team

(207) 242-4244

[mechelle.ganglfinger@maine.gov](mailto:mechelle.ganglfinger@maine.gov)

- Questions related to assessment coordination, administration, and accessibility
- Policy-related questions
- Fixing a student who appears on your assessment roster in NEO but does not appear in WIDA AMS
  - *Please wait at least 36 hours after making the update in Synergy.*
- Any problems that WIDA and DRC Customer Services are unable to answer

# MSAA

Maine's alternate assessments based on alternate academic achievement standards in reading, math and science (AA-AAAS)

Coordinator: Mechelle Ganglfinger

# 2024-2025 Important Dates

2/18/25

MSAA System goes live for Spring 2025. Maine DOE will create the SAU TC accounts within the MSAA Platform. Training Modules for TCs and TAs available in the MSAA System.

3/1/25

Final check by MSAA TC to communicate with local data manager, administrative assistant or appropriate colleague to confirm that all students who are eligible for alternate assessment participation via the IEP have been accurately flagged in Synergy State Edition.

3/10/25 – 4/25/25

Administration window for the Multi-State Alternate Assessment [MSAA] in ELA/Literacy, Math, and Science.

7/14/25 - 9/5/25 Online reporting window for 2025 MSAA and MSAA Science.

# Multi-State Alternate Assessment

## *Whom do I contact?*

### MSAA Service Desk

866-834-8879

[MSAAServiceCenter@cognia.org](mailto:MSAAServiceCenter@cognia.org)

[Live Chat available](#)

- Issues with the platform
- Questions around account permissions/creation
- Mandatory training modules and quiz
- Help logging in

### Maine DOE Assessment Team

(207) 242-4244

[mechelle.ganglfinger@maine.gov](mailto:mechelle.ganglfinger@maine.gov)

- Questions related to assessment coordination, administration, and accessibility
- Policy-related questions
- Fixing a student who appears on your assessment roster in NEO but does not appear in the MSAA Platform
  - *Please wait at least 36 hours after making the update in Synergy.*
- Any problems that MSAA Service Desk is unable to answer



**Assessment Team  
Lunch 'n' Learn Office Hours**

---

**Q&A**



Stay Connected!

---

## Find Us Online!



[www.maine.gov/doe](http://www.maine.gov/doe)



@MaineDOEComm



@mainedepted



@mdoenews



@MaineDepartmentofEducation1