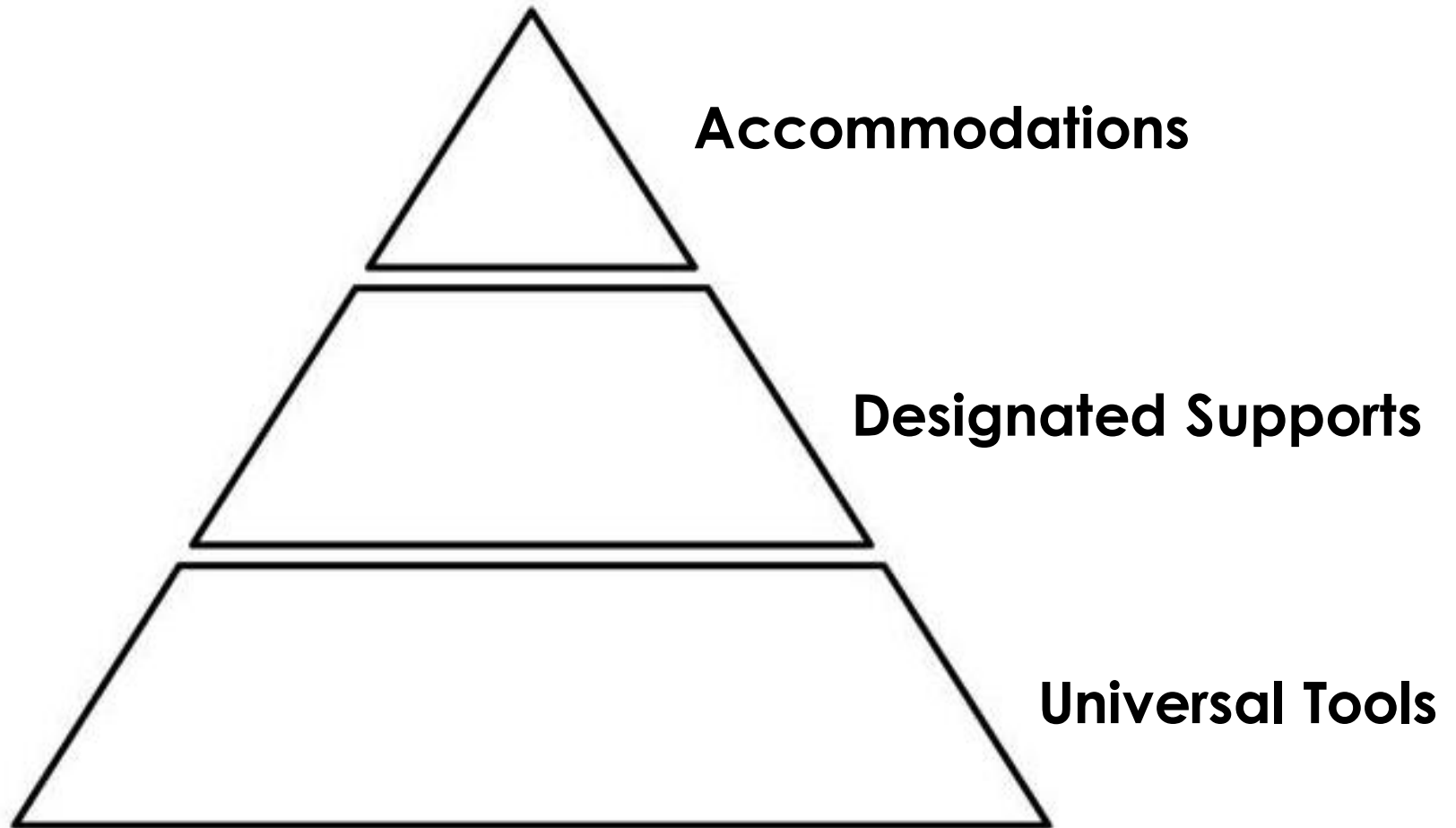


Accessibility Features

**Maine Through Year Assessment (Reading & Math)
Maine Science**

Types of Accessibility Features



Types of Accessibility Features

Embedded: Impacts delivery of the assessment within the assessment platform

Non-embedded: Features provided locally that do not change the assessment within the platform



Universal Tools

Readily available to ALL students

Universal Tools

Embedded Universal Tools: Provisions within the assessment platform provided automatically to all students

- Dependent on the vendor and assessment platform
- Examples: zoom, line reader, answer eliminator/response masking
- Best way to prepare students is to explore tutorials and/or practice tests

Math Reference Sheet



Mathematics Formula Sheet

- Embedded Universal Tool on the Through Year Assessment in Mathematics
- Available to all grade levels

Perimeter

The perimeter of a polygon is equal to the sum of the lengths of its sides.

Circumference of a Circle

$$C = \pi d \text{ or } C = 2\pi r$$

$$\pi \approx 3.14$$

Area

Triangle $A = \frac{1}{2}bh$

Rectangle $A = bh$ or $A = lw$

Circle $A = \pi r^2$

Surface Area

The total area of the 2-dimensional surfaces that make up a 3-dimensional object.

Volume

Right Rectangular Prism $V = lwh$ or $V = Bh$

Right Prism $V = Bh$

Cylinder $V = \pi r^2 h$

Cone $V = \frac{1}{3}\pi r^2 h$

Sphere $V = \frac{4}{3}\pi r^3$

Pyramid $V = \frac{1}{3}Bh$

Slope Formula

$$m = \frac{y_2 - y_1}{x_2 - x_1}$$

Linear Equation

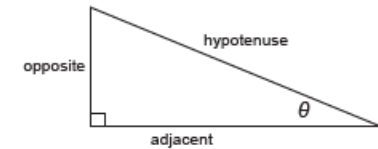
$$y = mx + b$$

Pythagorean Theorem

$$a^2 + b^2 = c^2$$

Definition of Trigonometric Functions

For $0^\circ < \theta < 90^\circ$,



$$\sin \theta = \frac{\text{opposite}}{\text{hypotenuse}}$$

$$\cos \theta = \frac{\text{adjacent}}{\text{hypotenuse}}$$

$$\tan \theta = \frac{\text{opposite}}{\text{adjacent}}$$

Mean

$$\bar{x} = \frac{x_1 + x_2 + x_3 + \dots + x_n}{n}$$

Interquartile Range

$$IQR = Q_3 - Q_1$$

The difference between the third quartile and first quartile of a set of data.

Standard Deviation

$$\sigma = \sqrt{\frac{(x_1 - \bar{x})^2 + (x_2 - \bar{x})^2 + \dots + (x_n - \bar{x})^2}{n}}$$

Universal Tools

Non-Embedded Universal Tools: Provided locally and available to all students

Tool	Description
Scrap/Scratch Paper	The student uses scratch paper, an individual erasable whiteboard, or an assistive technology device to make notes or record responses. Scratch paper can be lined, blank, or graph. All scratch paper must be collected and securely destroyed at the end of each test to maintain test security.



Designated Supports

Designated Supports

- Increase accessibility without altering the construct of any assessment item
- Determined on an individual basis by an educational team, for example (but not limited to) as part of...
 - Multi-Tiered System of Supports (MTSS)
 - Response to Intervention (RTI)
 - Individual Language Acquisition Plan (ILAP)
 - Student Assistance Team
- **For assigning designated supports, a team is two or more education professionals with knowledge of a student's performance.**
- **Supports must be consistent with the student's normal routine during classroom instruction.**
- Supports are entered into the assessment platform by either the School or District Assessment Coordinator

Embedded Designated Support

Support	Description
Provision within online platform that must be assigned to the student.	
Text-to-Speech (TTS)	<p>Text is read aloud to the student via (embedded) TTS technology. TTS should be consistent with the student's normal routine during classroom instruction.</p> <p>Headphones/earbuds are necessary unless tested individually in a separate setting.</p>

- **Maine Science and the Through Year Assessment in Mathematics are not intended to assess a student's reading ability.**
- The general assessments use grade-level text.
- Requirements for TTS:
 - Team of two or more education professionals make the determination
 - Consistent with student's normal routine during instruction

Text-to-Speech on the Reading Assessment

Support	Description
Provision within online platform that must be assigned to the student.	
Text-to-Speech (TTS)	Text is read aloud to the student via (embedded) TTS technology. TTS should be consistent with the student's normal routine during classroom instruction. Headphones/earbuds are necessary unless tested individually in a separate setting.

- **The directions, questions, and answer choices on the Reading Assessment are not intended to assess a student's reading ability.**
- When you assign TTS in the Reading Assessment, it will only read the directions, questions, and answer choices.
- TTS on the Reading Assessment will not read the reading passages.

Limitations of Text-to-Speech within NWEA's Platform

NWEA's Maine Through Year Assessment ONLY

- Current assessment platform limitations are especially important to consider if text-to-speech (TTS) is an accommodation on a student's IEP or 504 plan
- TTS is not fully functional on graphic gap match and gap match items (for example, drag-and-drop text boxes)
 - “Read All” works
 - Option to select “Sentence” or “Word” does not work
- TTS reads the period at the end of a title (e.g., Ms. and Mr.) as a period at the end of a sentence.
 - “Read All” works
 - Select “Sentence” will not read the entire sentence.

Non-Embedded Designated Supports

Support	Description
Individual/Separate Setting	Individual or separate setting may be used to minimize distractions for students whose test is administered out of the classroom or so that others will not be distracted by supports/accommodations being used.
Small Group Setting	Small group setting may be used to minimize distractions for students whose test is administered out of the classroom.
Alternate Aids/Supports	The test may be presented through their regular communication system to a student who uses alternative or assistive technology on a daily basis. The test may be presented using visual aids such as visual magnification devices, reduction of visual print by blocking or other techniques, acetate shields; or auditory devices such as special acoustics, amplification, noise buffers, whisper phones, or calming music.
Bilingual Word Glossary for MLs	A bilingual/dual language word-to-word glossary is provided to students who are Multilingual Learners as a language support as per ILAP.

Non-Embedded Designated Supports

Maine Through Year Assessment - Math ONLY

Support	Description
Mathematical Supports	This Designated Support is for students who need additional supports for math (e.g. abacus, number line, addition/multiplication charts, base-ten blocks, various types of counters, fraction tiles and pies without numerical labels, coins, clock with or without numbers shown on clock face; clock should not have gears, etc.).

Supports must be consistent with the student's normal routine during classroom instruction.

Non-Embedded Designated Supports

Maine Science ONLY

- Timed assessment

Support	Description
Breaks	Multiple or frequent breaks may be required by students whose attention span, distractibility, physical and/or medical condition require shorter working periods.
Extended Time	Extended time is time beyond recommended/average of 60 minutes per session(s) 1, 2, and 3.



Accommodations

Accommodations

Accommodations are changes in procedures or materials that are used to increase equitable access during the assessment **for students with documentation of the need on an Individualized Education Plan (IEP) or 504 Plan.**

Accommodations are entered into the assessment platform by the School or District Assessment Coordinator.

Accommodations

Accommodation	Description
Paper-Based + Large Print	For students with an IEP/504 plan that requires assessments to be paper-based and not administered online.
Braille	Both contracted and un-contracted braille are available as indicated by a student's IEP/504 Plan.
American Sign Language	Text is translated via sign language interpreter to student by Test Administrator as documented in the IEP/504 plan.
Read Aloud/ Human Reader	Text is read aloud to student by Test Administrator human reader as documented in the IEP/504 plan. (This accommodation does not apply to Reading Passages on the Reading Assessment.)
Scribe	The student may dictate answers to a human scribe in an individual setting as indicated by a student's IEP/504 plan. Human scribe records verbatim what a student dictates and must give the student an opportunity to review scribed text. Scribed answers must be entered into the online testing platform - no paper submissions accepted.

Similarities & Differences

Through Year Assessment

- Braille forms are shipped to the school/SAU
- Paper-based and large print are print-on-demand within the assessment platform
- Proctor enters student's responses into the assessment platform
- All paper forms, including braille and large print, are destroyed on-site

Maine Science

- Braille forms are shipped to the school/SAU
- Paper-based and large print are shipped to the school
- Completed forms are shipped back to the assessment vendor for scoring

Non-Embedded Accommodations

Maine Through Year Assessment - Math ONLY

Accommodation	Description
Calculator Use	A calculator is provided throughout the entire mathematics assessment, as per the student's IEP or 504 plan.

Non-Embedded Accommodations

Maine Through Year Assessment – Reading Grades 6+ ONLY

Accommodation	Description
Read Aloud/ Human Reader for Reading Passages	This accommodation is only allowed for students in grades 6+ that have a documented print disability. The student will have the Reading Passages on the Reading Assessment read by a qualified human reader in English.

If you have any questions about this accommodation, please reach out to Maine DOE's Office of Special Services and Inclusive Education:

ossie@maine.gov

(207) 624-6608



Read Aloud of Reading Passages State Reading Assessment Accommodation

Maine Department of Education
Office of Special Services



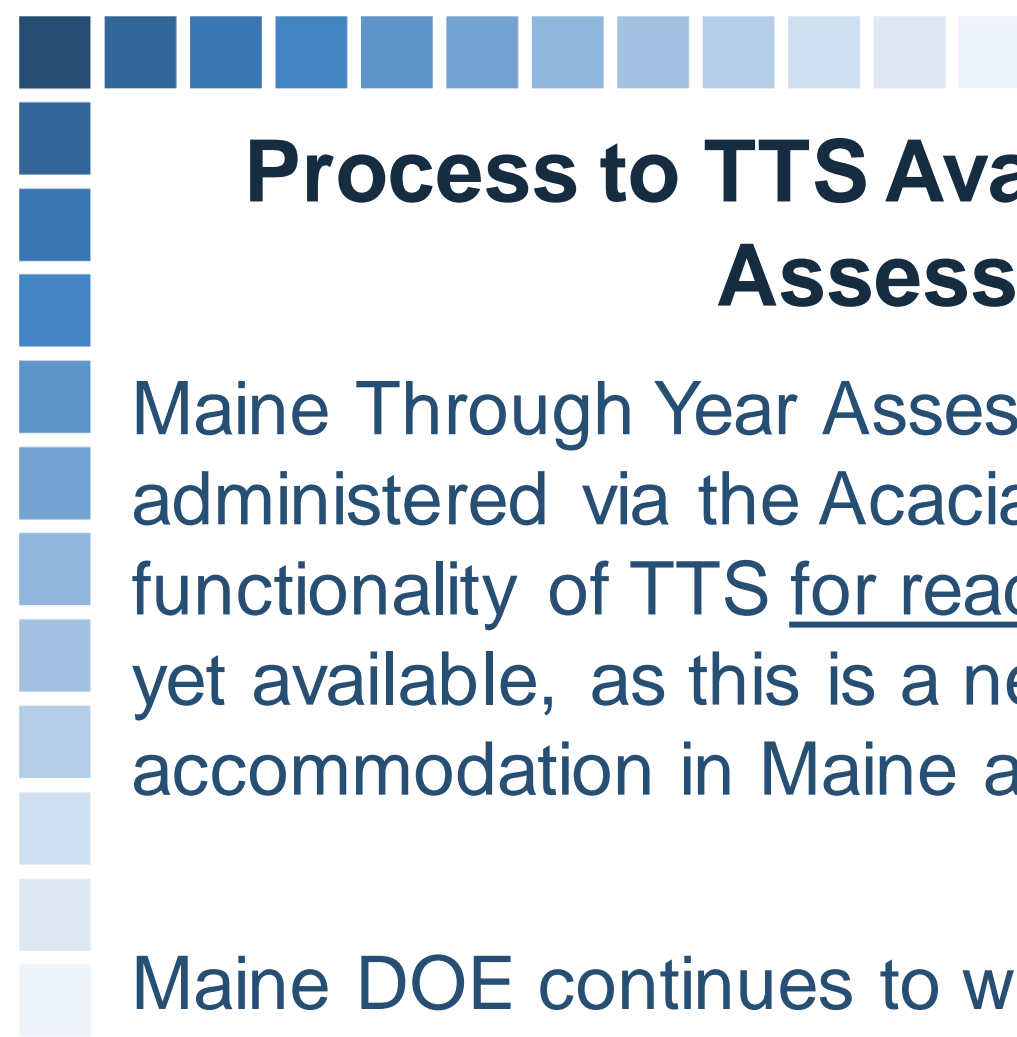
Update to State Policy on Read Aloud of Reading Passages

Beginning in Spring 2023 with the first administration of the **Maine Through Year Assessment**, students in grades 6+ with a print disability - who are currently utilizing TTS or human reader to access text across subject areas - will be able to access the Read Aloud/Human Reader accommodation on reading passages on the Maine Through Year Assessment in Reading.



Print Disabilities

- **A student with a print disability is unable to gain information from standard printed materials at an anticipated level for their grade and needs alternate access to the information.**
- **There is strong evidence suggesting the reading disability will persist despite intensive, targeted instruction.**



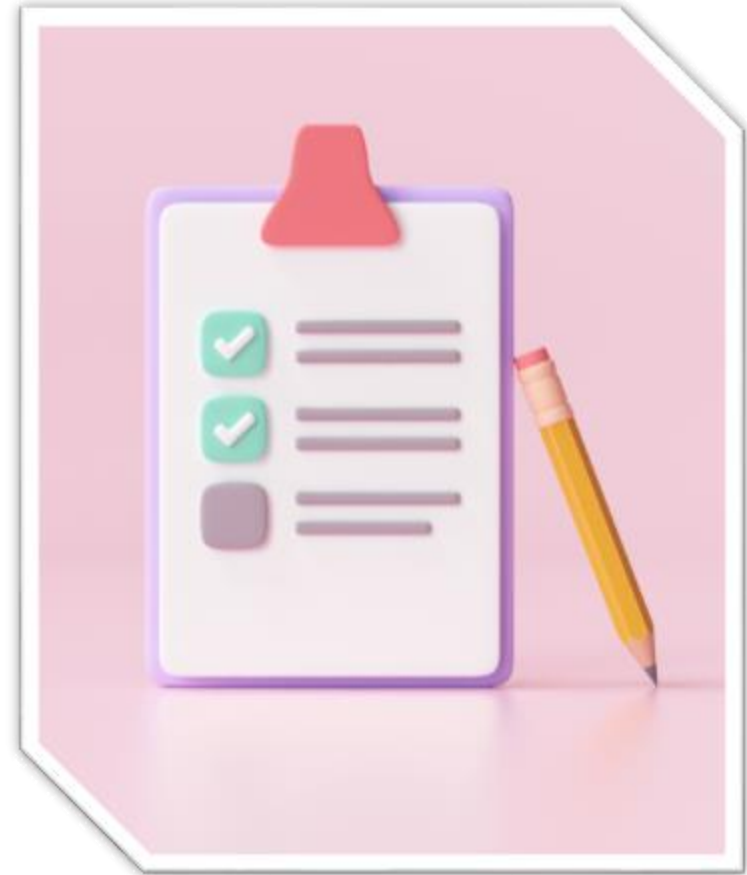
Process to TTS Availability on State Assessment

Maine Through Year Assessment will be administered via the Acacia Platform. The functionality of TTS for reading passages is not yet available, as this is a new allowable accommodation in Maine and a new platform.

Maine DOE continues to work, to incorporate this functionality in the future system updates.

Forms and Process for Print Disability – TTS Accommodation

1. GUIDE Print Disabilities:
Consideration for
Accommodations
2. Print Disability Flow Chart
3. Print Disability Text-to-
Speech Checklist





Questions?