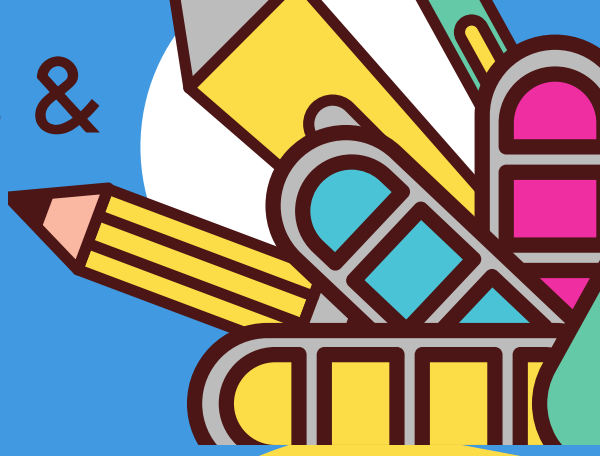


ACCESS for ELLs & Alternate Access for ELLs



WHAT IS THE ACCESS FOR ELLS?

The ACCESS for ELLs is Maine's annual English Language Proficiency assessment, which is administered statewide to Maine students in Grades K-12 who are identified as multilingual learners. The ACCESS measures ongoing development in the language domains of listening, speaking, reading, and writing.

WHAT IS THE ALTERNATE ACCESS FOR ELLS?

The Alternate ACCESS for ELLs is Maine's annual English Language Proficiency Assessment for multilingual learners in Grades 1-12 with the most significant cognitive disabilities. In order to participate in alternate assessments, students must be found eligible via the IEP Team using state eligibility criteria/guidance. This assessment is an accommodated form that measures the student's proficiency in the four language domains.



HOW IS THE ACCESS FOR ELLS IMPORTANT?

ACCESS individual score reports can be used by your child's educators to inform instruction, develop language goals, and design formative assessment tools. ACCESS reports and data inform plans for services, staffing, and resources for all multilingual learners at the state, local, and school levels.

The annual English language proficiency assessment of multilingual learners is a federal requirement under the Every Student Succeeds Act, and is a part of the civil rights of multilingual learners.

ACCESS ASSESSMENTS 2022-2023 SCHOOL YEAR

Maine DOE continues to support and encourage all SAUs and schools in the administration of state assessments. The administration window for ACCESS for ELLs and Alternate ACCESS for ELLs is January 9th, 2023 – March 3rd, 2023. Additionally, the Alternate ACCESS for ELLs Field Test will be administered from February 14th, 2023 - April 17th, 2023.

