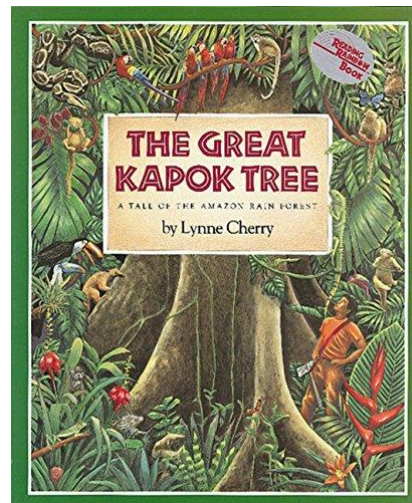
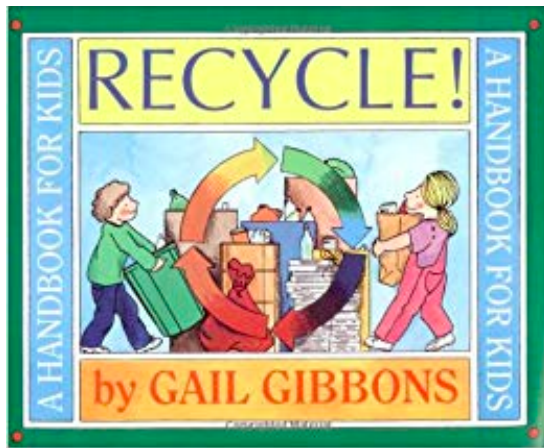
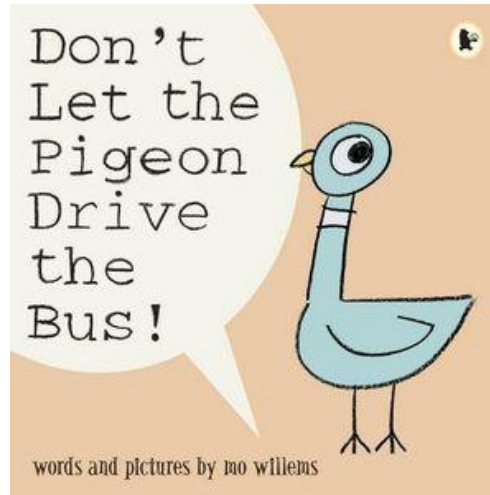
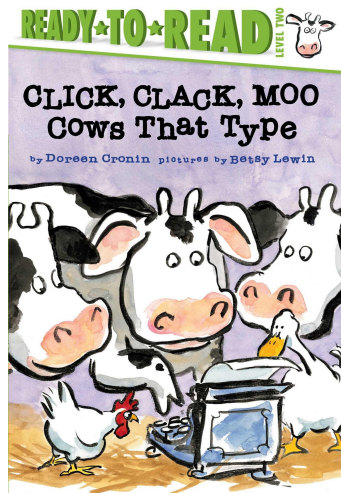


Argument anchor chart images

mentor texts

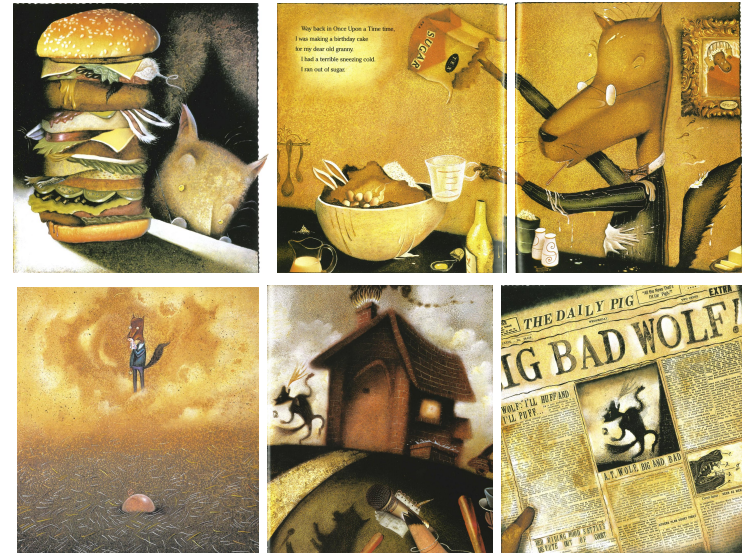


Writing U4 W1 D5

stages



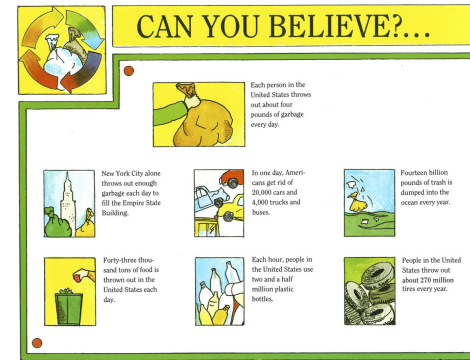
thesis: states what the writer is trying to convince the audience to think or do



reasons: support the thesis, appeal to the audience



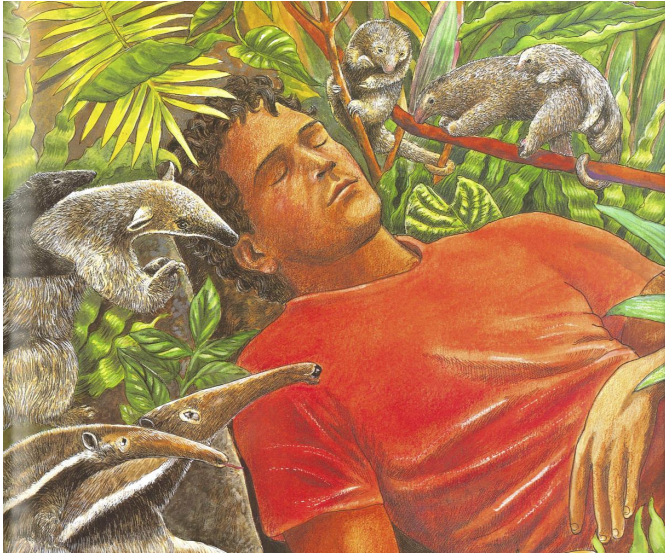
reinforcement of the thesis: repeats the thesis in a new way



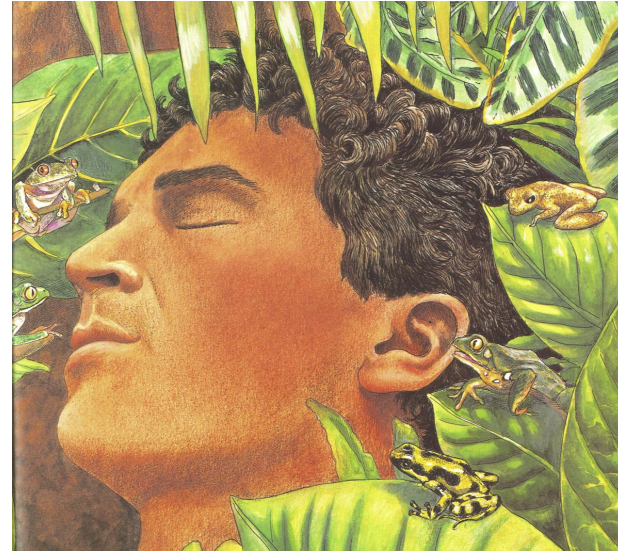
evidence: supplies facts and details to support the reasons, appeals to the audience

Writing U4 W1 D5

language



what you do today. The big man tells you to chop down a beautiful tree. He does not



he piped in the man's ear: "Senhor, a ruined rain forest means ruined lives . . . many ruined lives. You will leave many of

positive and/or negative **adjectives** that make the argument stronger

Writing U4 W1 D5