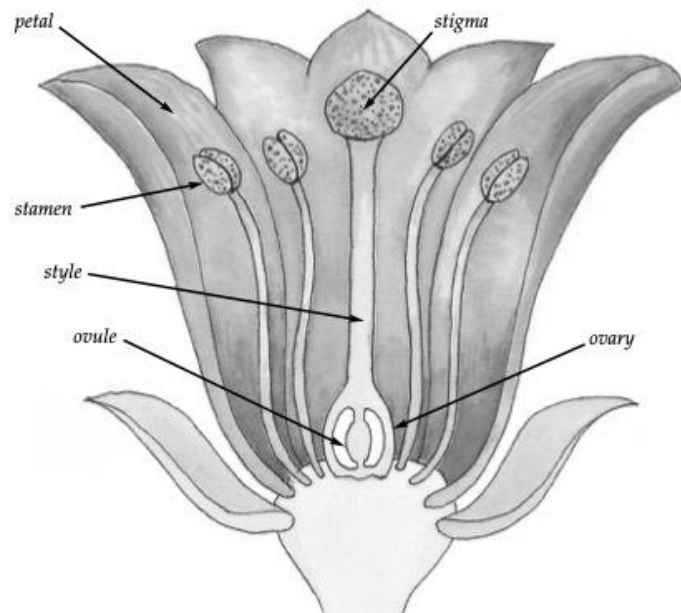


What is pollination?

Some flowers have male and female parts. The **stamen** is the male part of the plant that makes pollen. Some flowers have one stamen, and others have many. The **pistil** is the female part of the flower. It is made up of the **style**, **stigma**, and **ovary**. The stigma is the top part. It receives the pollen. The style is the pollen tube. The pollen travels down through the style to the ovary. The ovary contains **ovules**.



How a plant grows

When pollen moves from a stamen to a stigma, **pollination** has taken place. After a flower is pollinated, its petals fall off. The ovaries of the flowers become fruit, and the ovules become seeds. The fruit of a plant can be a vegetable or nut, as well as fruit. The fruit of the bean plant below are the bean pods. The seeds are the beans inside the pods.

Bees are pollinating the flowers of a bean plant.

After pollination, the ovaries of the flowers become bean pods.

The beans inside are the seeds that can make new plants.

