

Report Feedback

Writer's Name: _____

Reviewer's Name: _____



Does it make sense?

Yes

No

Plan:

What is a Bee?

A bee is an insect.
Like all insects, it has six legs. It has a body made up of three parts.



Does it begin with a general statement that introduces and classifies the topic?

Yes

No

Plan:

Contents	
What is pollen?	4
What is pollination?	6
Types of pollination	8
Shapes and colors	10
Do we need pollinators?	12
Insect pollinators	14
Bees are best!	16
Butterflies and moths	18
Wasps and flies	20
Beetle pollinators	22
Bird pollinators	24
Lizards, bats, possums	26
Pollinators in danger!	28
Helping pollinators	30
Glossary and Index	32

Is information organized in subtopics?

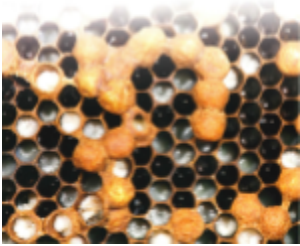
Yes

No

Plan:

The Bee Life Cycle

A bee starts life as a tiny egg inside a wax cell. A white grub called a larva hatches from the egg. The bees feed the larva lots of pollen.



Does each subtopic have a heading?

Yes

No

Plan: