

# Maine CITE Program Overview



## What is Assistive Technology (AT)?

Any device or service that helps a person with a disability do something that would otherwise be difficult or impossible.

# State Assistive Technology Programs

Device  
Demonstrations

Device Loans

Device Reuse

Information  
and Assistance

Training



Who do we  
serve?

ALL AGES AND ALL ABILITIES

# In all areas of life

- Community Living
- School
- Employment
- Transition
- Recreation



# Partners

---

Spurwink ALLTECH

---

Pine Tree Society

---

UMaine Farmington

---

Gallant Therapy Services



# Goals

- Broaden understanding and availability of AT
- Educate Maine residents to access and use AT
- Help shape public policy that promotes AT

Ensure that Maine is a place where all people with disabilities have access to the technology they need to live full, independent and productive lives.

# Training

Creating  
Accessible  
Content

Smart Home  
Technologies

Introduction to  
Communication

AT for Brain  
Injury

AT for Your Life –  
Tools for  
Independence

AT and Services  
for Blind and Low  
Vision in Maine



# Accessibility

---

Accessible Materials

---

Platforms/Programs

---

Websites

# AT for Sensory Needs





Put a little wiggle in it!

- Alternative seating options

# Give a little push

Foot bands can add resistance that may satisfy some sensory needs.





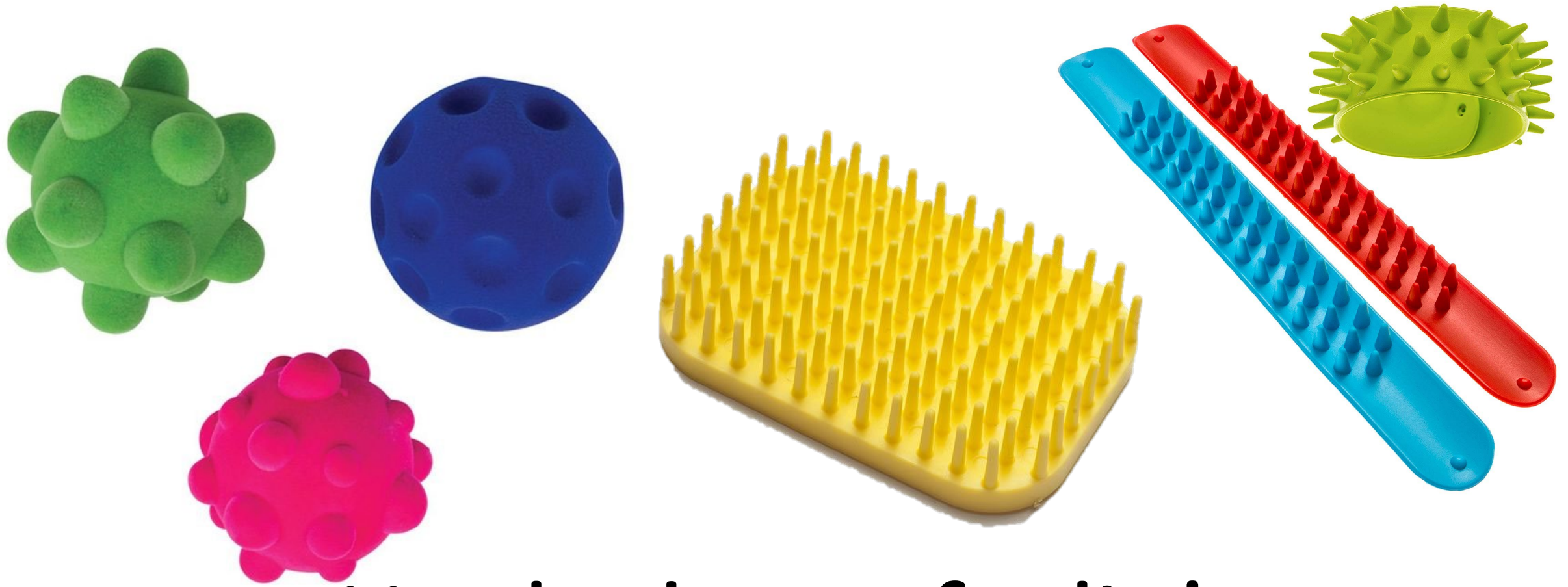
Feel the Vibrations





# The Weight

- Weighted lap pads
- Talk to OT for guidance on blanket weight



Hooked on a feelin'

---



A little quiet, please





Turn the lights down low



# Reading Pens

---

- A wide variety of styles and capabilities
  - Can include a built-in dictionary
  - Headphone jack
  - Exam mode

**READERPEN™**

**CONNECT**

**LINGOPEN™**

**READERPEN SECURE™**

**EXAMREADER™**



# Text-to-Speech Software/Programs

- Requires text to be in a digital format
- Simple or multiple features
- Web-based programs can be accessed from any device



## THE WORLD'S BIOMES

Welcome to the World's Biomes Page! **Biomes** are defined as "the world's major communities, classified according to the predominant vegetation and characterized by adaptations of organisms to that particular environment" (Campbell).



## Even for Math

### **Make math digital**

EquatIO allows you to create equations, formulas, and more, digitally. Helping to make math and STEM classes more accessible and engaging for every student.

# Speech-to-text



Built-in feature on nearly ALL new computers/tablets



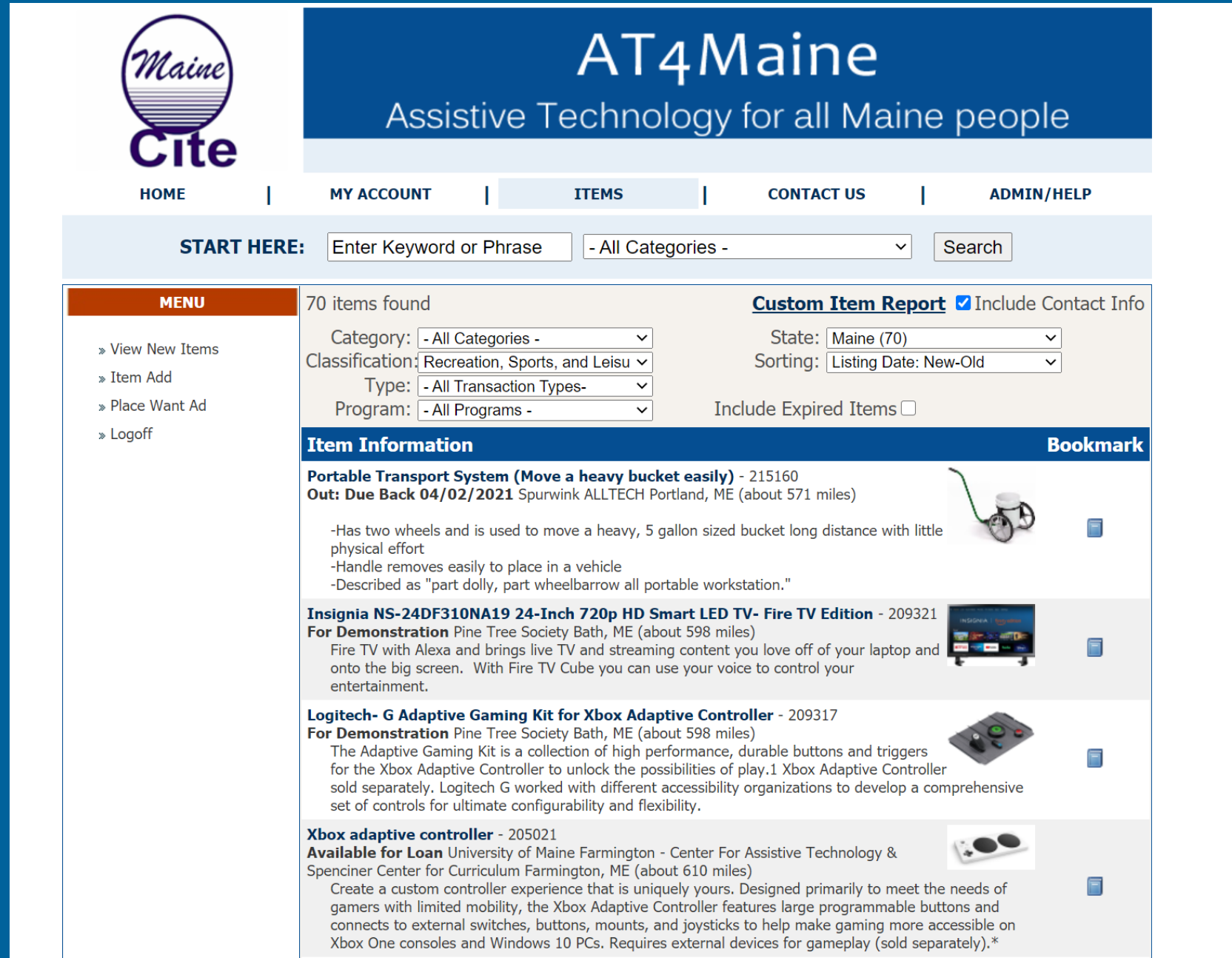
Software available for more robust needs



# Curious about AT?

## Check out the online equipment loan library.

### AT4maine.org



The screenshot shows the AT4Maine website interface. At the top left is the Maine CITE logo. The main header features the text "AT4Maine" and "Assistive Technology for all Maine people". Below this is a navigation menu with links for HOME, MY ACCOUNT, ITEMS, CONTACT US, and ADMIN/HELP. A search bar is located below the navigation, with the text "START HERE:" and a search button. The main content area is divided into a left sidebar with a "MENU" section containing links for "View New Items", "Item Add", "Place Want Ad", and "Logoff". The main content area displays a search results page for "70 items found". It includes a "Custom Item Report" section with filters for Category, Classification, Type, and Program, and a "State" dropdown set to "Maine (70)". The results list includes:

- Portable Transport System (Move a heavy bucket easily) - 215160**  
**Out: Due Back 04/02/2021** Spurwink ALLTECH Portland, ME (about 571 miles)  
-Has two wheels and is used to move a heavy, 5 gallon sized bucket long distance with little physical effort  
-Handle removes easily to place in a vehicle  
-Described as "part dolly, part wheelbarrow all portable workstation."
- Insignia NS-24DF310NA19 24-Inch 720p HD Smart LED TV- Fire TV Edition - 209321**  
**For Demonstration** Pine Tree Society Bath, ME (about 598 miles)  
Fire TV with Alexa and brings live TV and streaming content you love off of your laptop and onto the big screen. With Fire TV Cube you can use your voice to control your entertainment.
- Logitech- G Adaptive Gaming Kit for Xbox Adaptive Controller - 209317**  
**For Demonstration** Pine Tree Society Bath, ME (about 598 miles)  
The Adaptive Gaming Kit is a collection of high performance, durable buttons and triggers for the Xbox Adaptive Controller to unlock the possibilities of play.1 Xbox Adaptive Controller sold separately. Logitech G worked with different accessibility organizations to develop a comprehensive set of controls for ultimate configurability and flexibility.
- Xbox adaptive controller - 205021**  
**Available for Loan** University of Maine Farmington - Center For Assistive Technology & Spenciner Center for Curriculum Farmington, ME (about 610 miles)  
Create a custom controller experience that is uniquely yours. Designed primarily to meet the needs of gamers with limited mobility, the Xbox Adaptive Controller features large programmable buttons and connects to external switches, buttons, mounts, and joysticks to help make gaming more accessible on Xbox One consoles and Windows 10 PCs. Requires external devices for gameplay (sold separately).\*



# Maine CITE for Maine Educators

- AT Training
- AT Demonstrations
- Accessible Educational Materials
- AT Lending
- AT for Transition

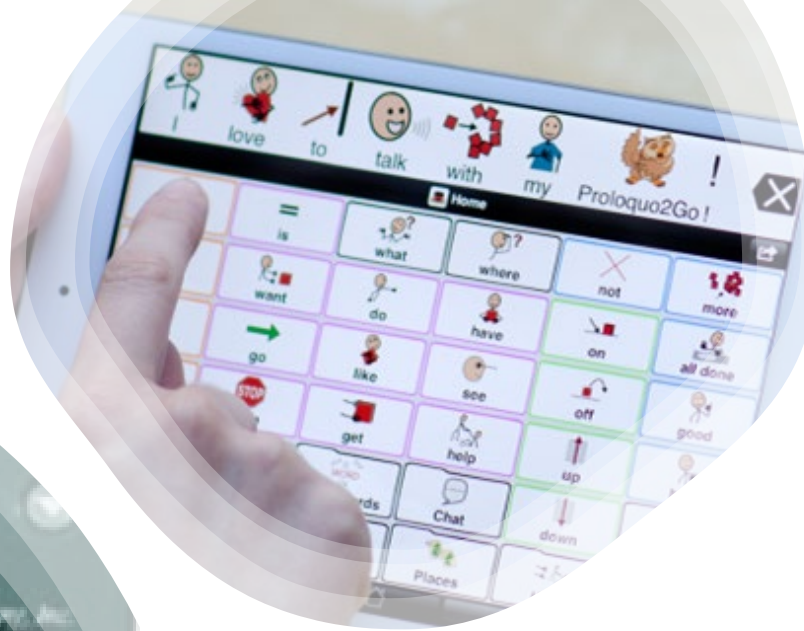
Your student is using  
AT and you would  
like to learn more  
about it.





Your student is struggling due to their disability. You want to try some tools to see if they help.

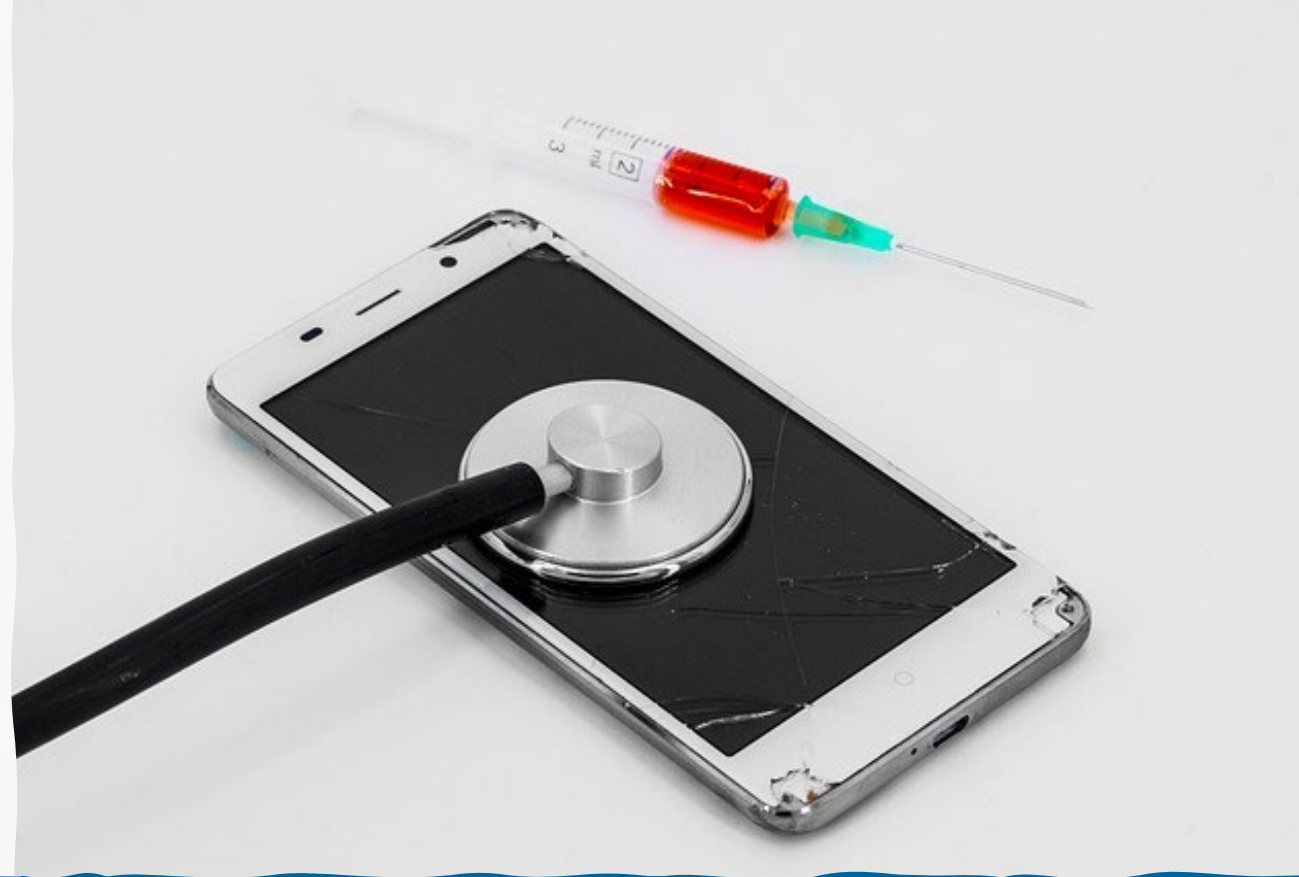




Your team is completing an AT evaluation and need devices to trial with the student.

You want more information about accessible education materials.





Your student's device is broken, and you need a  
loaner while it is getting repaired.

---



Your student is struggling due to a disability.

You have no idea if there are tools available to help.



Your student is beginning the transition process. You need to find AT that will be accessible to them when they leave school and need help identifying options and resources.

# Reach out! We are here to help!

---



## ***Maine CITE***

Assistive Technology for all ages and all abilities

---

[www.mainecite.org](http://www.mainecite.org)

[info@mainecite.org](mailto:info@mainecite.org)

207-621-3195

 **Maine CITE**