

General Description

The proposed lease site in Pleasant Cove in the Damariscotta River was visited a second time by DMR staff on July 22, 2022 to further assess riparian ingress and egress, navigation, fishing, and other activities in the area, including moorings and docks that may not have been in use during the initial site visit. DMR science staff arrived at approximately 8:30 am and remained until approximately 10:30 am. High tide was at 7:15am and the tide was ebbing during DMR’s site assessment.¹ The applicant’s Limited Purpose License (LPA) gear was on-site, and the site was marked with yellow buoys at the proposed lease corners.

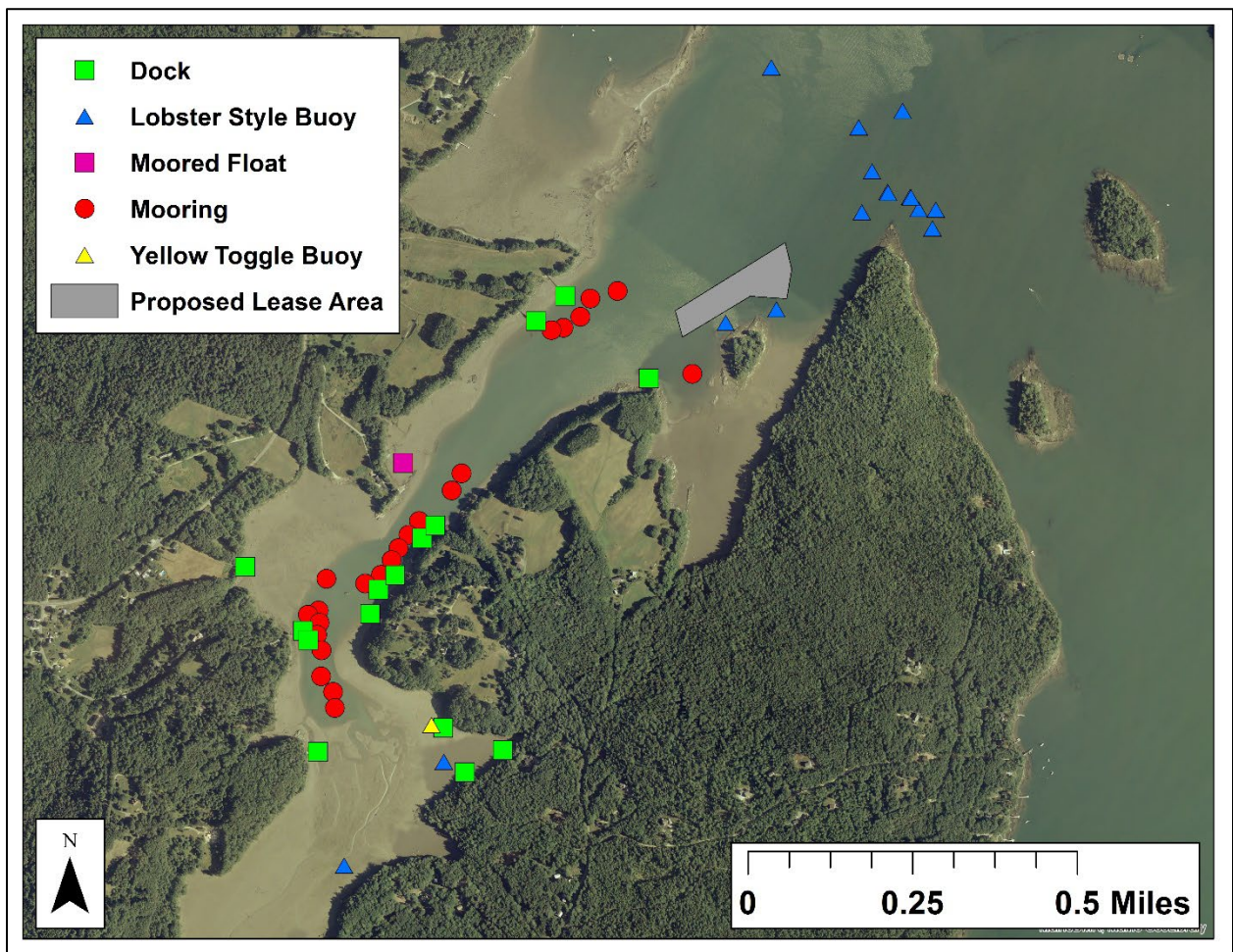


Figure 1: Proposed lease area and surrounding features observed on 7/22/2022.²

¹ Walpole, Damariscotta River, Maine (43.9333° N, 69.5800° W): <http://tbone.biol.sc.edu/tide/tideshow.cgi>

² Figure created in ArcMap version 10.8 using geo-referenced aerial photographs provided by The Maine Office of GIS (orthoCoastalCentralCoast2003and2005).

The nearest observed lobster-style buoys are shown in Figure 1. Additional heavy lobster fishing activity was observed in the marked navigation channel to the east of the buoys shown in Figure 1, and more than 1,000 feet from the proposal. The nearest lobster-style buoy observed was approximately 80 feet to the southeast of the proposal.

The docks and moorings that were observed within Pleasant Cove on July 22, 2022 are shown in Figure 1. In addition to these docks and moorings, several sets of shoreline stairs were observed throughout the cove. Kayaks, canoes, paddleboards, rowboats, inflatable dingies, and a variety of motor boats were observed on several docks and floats, as well as stored on the shoreline of the cove. A variety of watercraft were observed on moorings, including a sailboat, motor boats, and what appeared to be a commercial fishing vessel. Approximately 15 of the observed moorings in the cove did not host a watercraft at the time of DMR's site assessment. Additionally, towable tubes were observed on multiple docks and floats in the cove. The nearest observed mooring was approximately 300 feet to the south of the proposal and was being used by a Tidewater motorboat in the 15 to 25 foot range. The nearest observed dock was approximately 410 feet to the southwest of the proposal, which had an inflatable dinghy tied off nearby.

Two motor boats were observed leaving the cove during DMR's site assessment, one of which returned and was observed towing individuals on a tube between the shallow subtidal and intertidal area of the cove to the southwest of the proposal, and the center of the mouth of the cove to the north of the proposal. Two kayaks were observed launching from shore over 3,000 feet to the southwest of the proposal, and a remote-controlled model boat was also observed in the same area. A recreational hook and line angler was observed near Carlisle Point, presumably fishing for striped bass (*Morone saxatilis*).

Finally, observed wildlife included 2-3 harbor seals (*Phoca vitulina*) hauled out on the ledge to the north of the proposal, 1 harbor seal pup swimming in the general vicinity of the proposal and near the inner reaches of the Pleasant Cove, 2 great blue herons (*Ardea heronias*) flying in the inner reaches of the cove, and several terns (*Sterna sp.* or *Sternula*) fishing throughout the cove.