

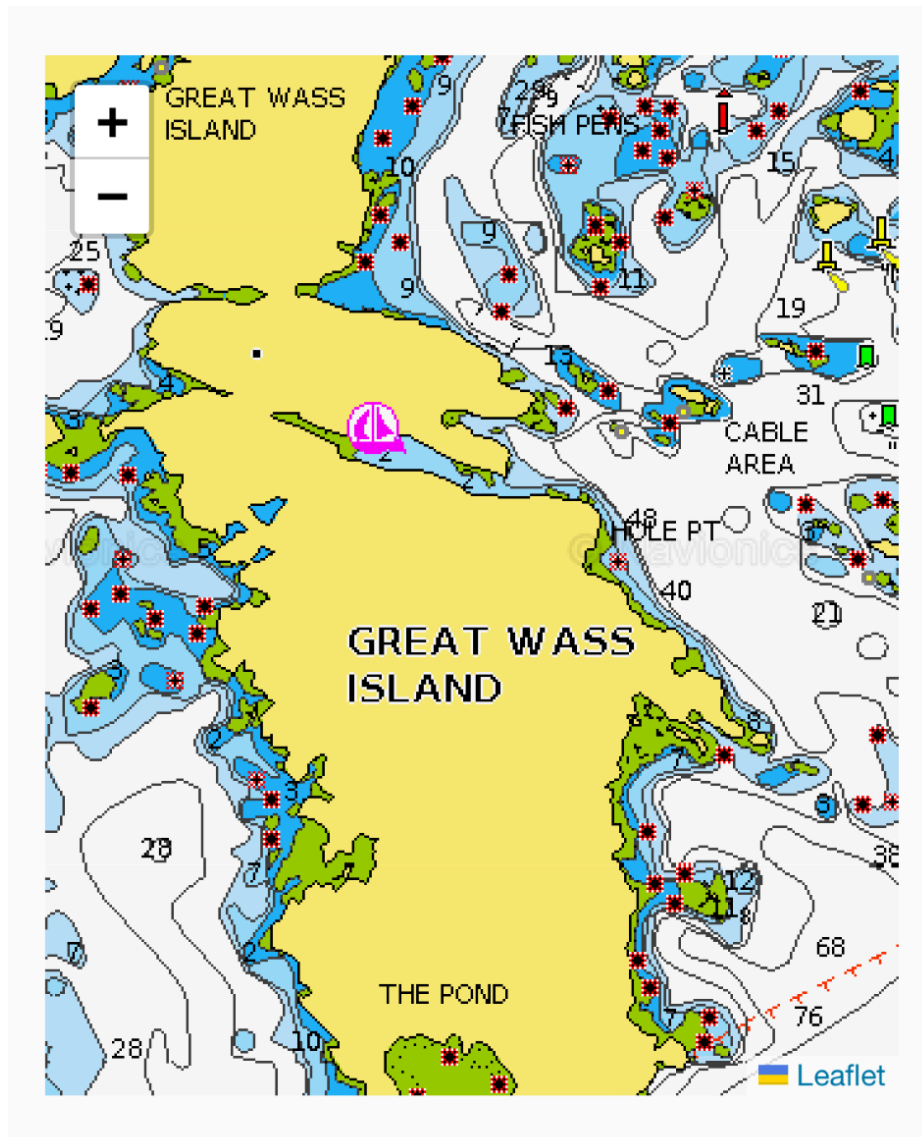


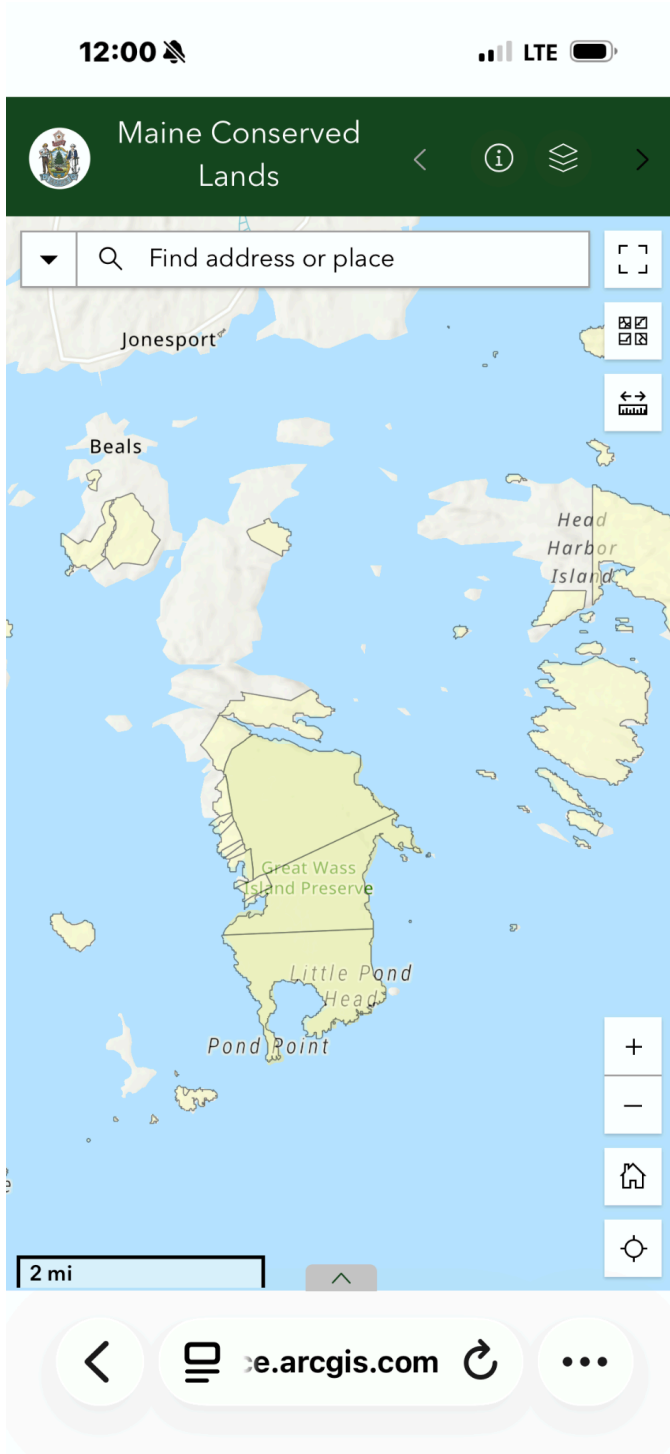
@Nuada Classic Yachting on Facebook, 1/29/24, Chartered Sailboat Cruises

“The Mud Hole is located in the center of the east side of Great Wass island. It is an intimate, extremely well-protected anchorage with high, undeveloped shores and access to beautiful hiking trails. It exemplifies the quiet and scenic anchorage that many seek while cruising Downeast Maine,” Sandy Andrews.

Andrews, Sandy, “The Mud Hole,” Cruising Club of America, 12 July 2025.  
<https://guides.cruisingclub.org/harbor/mud-hole/>.

Anchorage map included in article. (Copyright Navionics):





Maine Conserved Lands | ArcGIS Hub

<https://hub.arcgis.com/datasets/maine::maine-conserved-lands-1/explore?location=45.215345%2C-68.994939%2C6>