

Coffin Exhibit 4

Summary of proposed reductive changes to lease:

(For informational purposes only, please refer to the list of reductions to original application & supplementary information section for full, detailed list of reductions and clarifying information)

- Reduce size of lease from 6.84 acres to 2.67 acres to address concerns about eelgrass, navigation, and riparian ingress and egress.
- Move 2 corner markers (coordinates # 1 & # 6) and add 1 additional corner marker (coordinate #7), while remaining within the original lease boundary footprint.
- Remove use of pressure washer and generator.
- Remove permanently affixed shed on float and replace with an easy-up tent, which can be folded up daily.
- Concentrate layout of gear and on-site support structure (bottom bags, floating bags, and float) as recommended in DMR site report.

List of reductions to original application & clarifying supplementary information:

(Page 1) Section 1: Applicant Contact Information

- Applicant legal name changed from Bailey Coffin to Bailey Pennell

(Page 1) Section 2: Proposed Lease Site Information

- Total acreage requested reduced from 6.84 acres to 2.67 acres

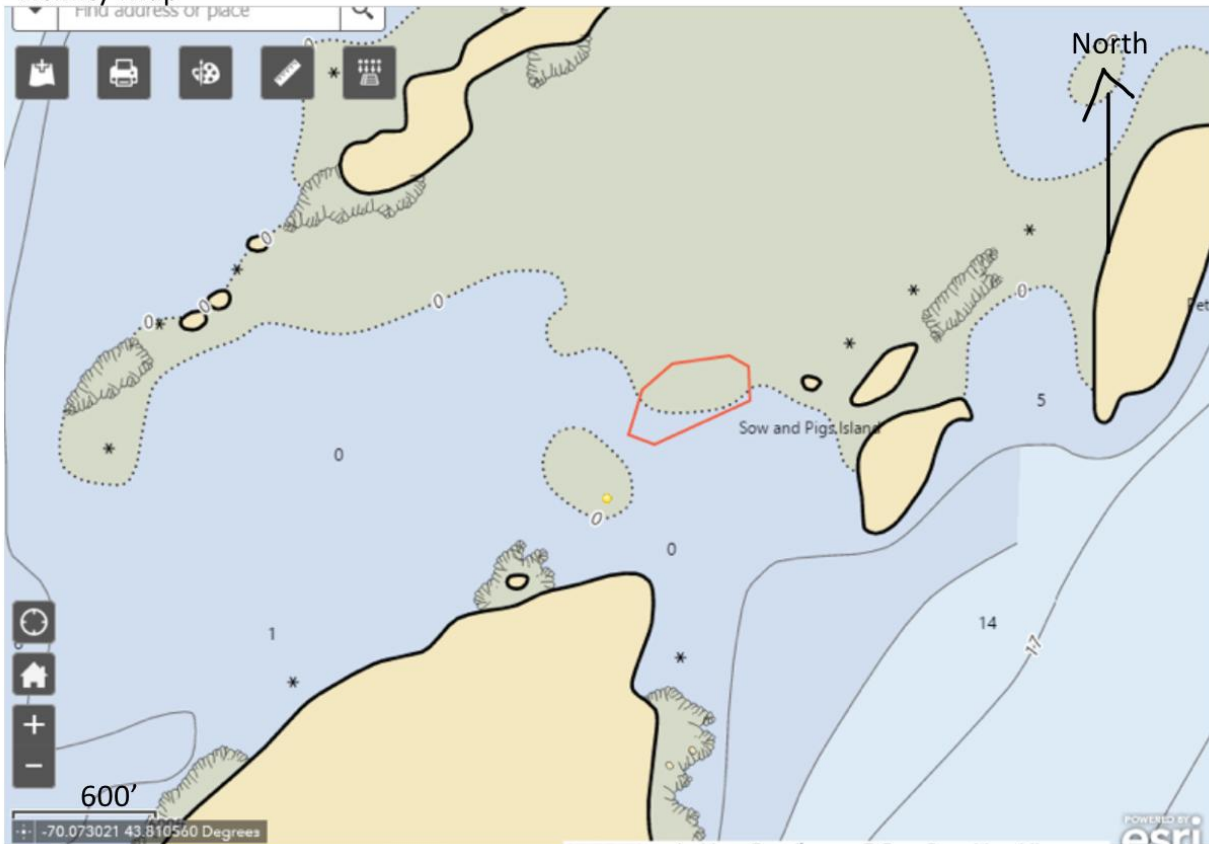
(Pages 2 & 3) Section 4: Species Information

- Remove "European oysters" from species information list
- See letter from DEI, 2023 Mook Sea Farm seed catalog, and 2023 Muscongus Bay seed catalog

(Page 4) Section 5: Vicinity Map

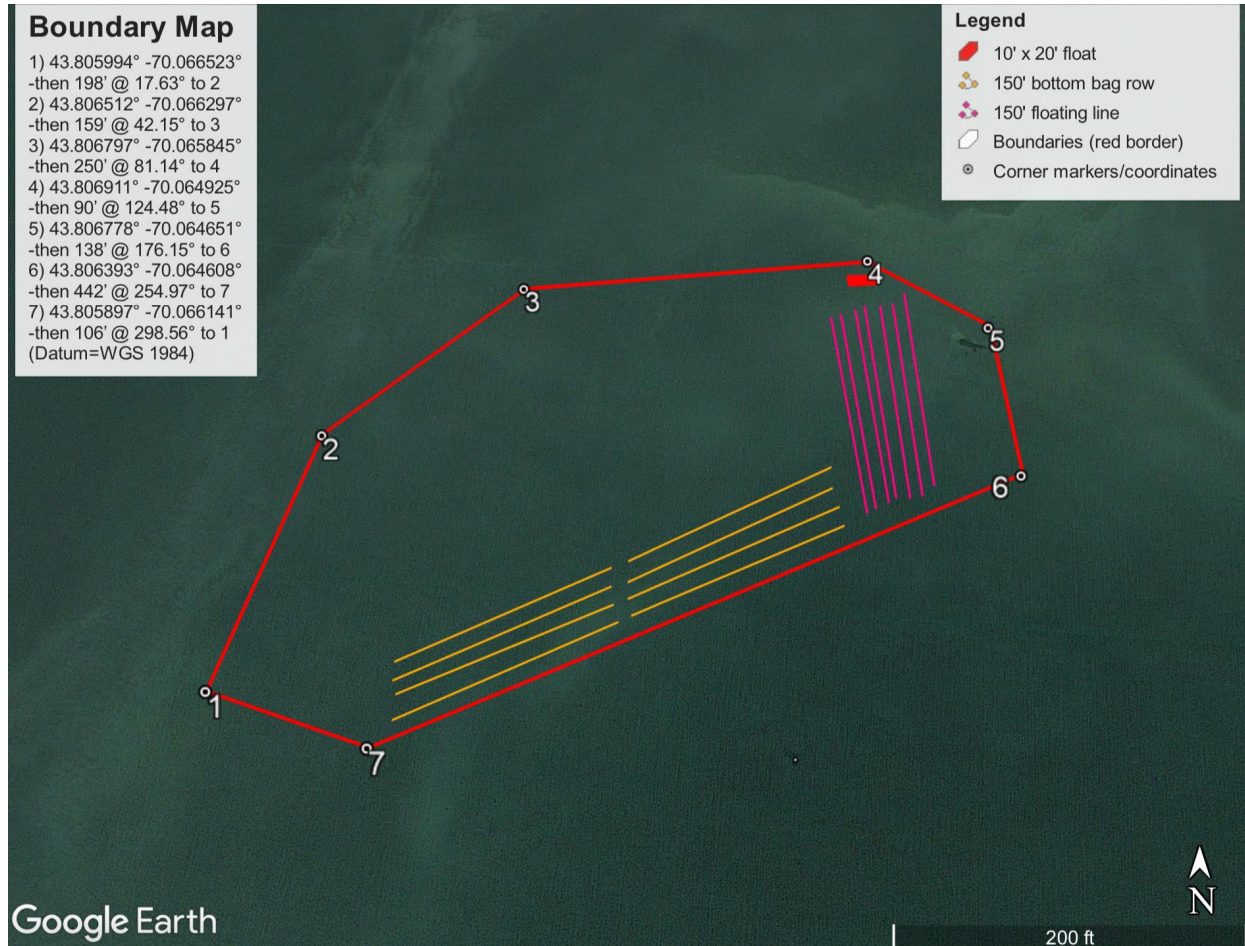
- Please see revised lease boundaries on DMR Aquaculture Map with NOAA chart baselayer. *Note that there is no change to the MLW and MHW lines as drawn (MHW based on aerial imagery) and mapped (MLW with GPS) on the Vicinity Map as these are fixed, natural delineations.

Vicinity Map



(Page 4) Section 6: Boundary Drawing

- Please see revised Boundary Drawing Map and Coordinate Description



Lease Boundary Coordinates & Description

- 1) 43.805994° -70.066523°
then 198' @ 17.63° to 2
- 2) 43.806512° -70.066297°
then 159' @ 42.15° to 3
- 3) 43.806797° -70.065845°
then 250' @ 81.14° to 4
- 4) 43.806911° -70.064925°
then 90' @ 124.48° to 5
- 5) 43.806778° -70.064651°
then 138' @ 176.15° to 6
- 6) 43.806393° -70.064608°
then 442' @ 254.97° to 7
- 7) 43.805897° -70.066141°
then 106' @ 298.56° to 1

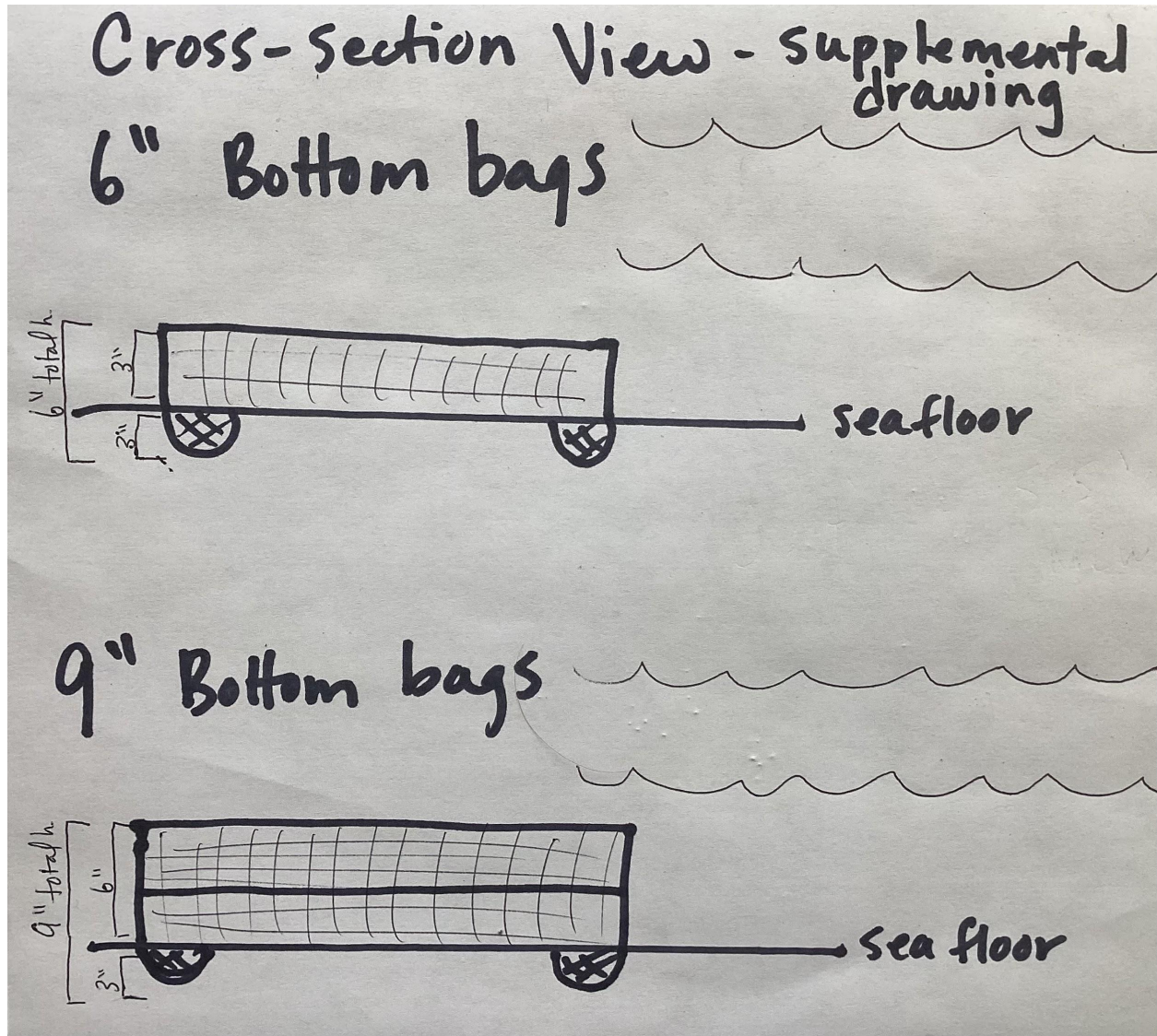
(Datum= WGS 1984; distances and direction calculated using ruler tool in Google Earth Pro)

(Pages 5 & 6) Section 7 A: Gear Information

- Need to clarify that a maximum total of 800 bottom bags will be deployed (combination of 6" or 9" bottom bags). For example, this could mean (800) 6" bottom bags and (0) 9" bottom bags or similar combination not to exceed 800 bags in total.
- Note that corner markers are comprised of 4' HELIX ANCHORS attached to corner marker buoy with $\frac{3}{8}$ " SINKING LINE, consistent with what is already written in the lease application.
- Please see corrected cross-section view– need to clarify that while bottom bags are respectively 6" and 9" in height, they extend above the sea floor 3" and 6."

(Page 29) Cross-section view

- Correction & clarification: Bottom bags do not sit on top of the sea floor. The wire feet sit 3" in the mud and the bags extend 3" and 6" above sea floor (see image below).



(Page 7) Section 7 B 1- Overhead View

- Please see revised "Overhead View" that shows concentrated placement of bottom bags and floating lines.
- The (8) 3' x 150' rows of bottom bags will be concentrated on the portion of the proposed lease where DMR indicates that "Bottom cages deployed through the center of the lease and along the proposal's eastern boundaries would be covered by slightly more water at low tide" and "It should be noted that the shallow bar that borders the proposal to the north also poses a natural constraint to navigation in the area. If the applicant were to consolidate these lines on one section of the lease, more space would be available for riparian access." (DMR Site Report, page 13)

(Page 7) Section 7 B C- On-site support structures

- Please see revised on-site support structure schematic below. Remove shed on work float and replace with smaller, temporary 10' x 10' easy-up tent (folded up daily).

On-Site Support Structure Diagram & Photos

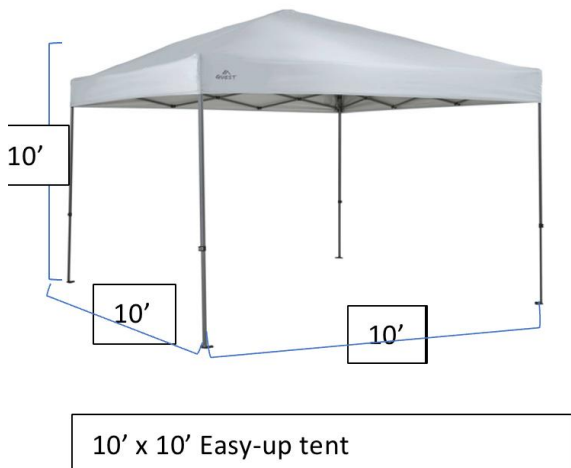
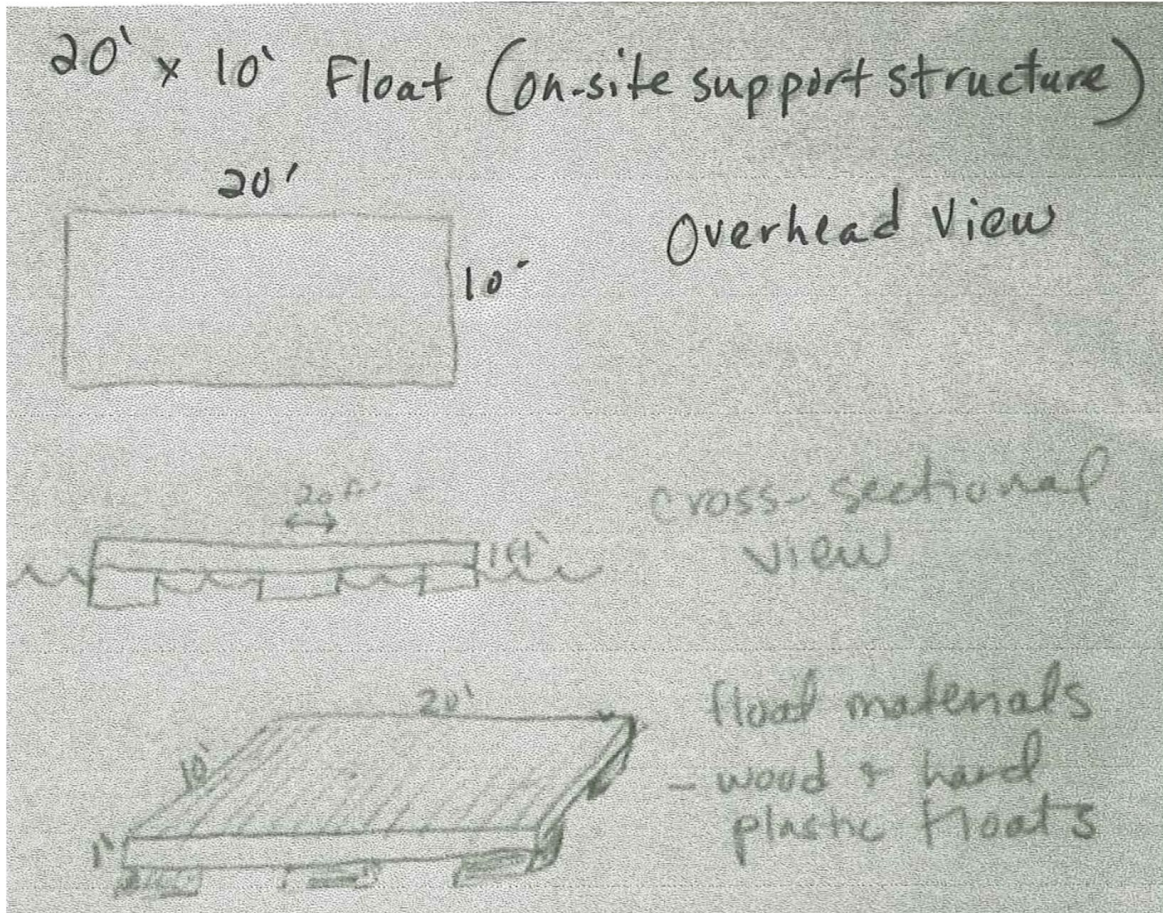


Photo of 10' x 20' float

(Page 8) Section 7D: Gear Color

- Replace “shed will be clear or white shrink wrap with a 2” x 5’ strip of reflective tape on each side” with “easy-up tent will be white or tan.”

(Page 9) Section 9B: Noise and Light

- Remove “portable 1500 psi pressure washer powered by a 2,500 watt portable generator”

(Page 9) Section 9C: Noise and Light

- Remove all references to pressure washer and generator