

67°52'0"W

67°51'0"W

67°50'0"W

67°49'0"W

44°30'0"N

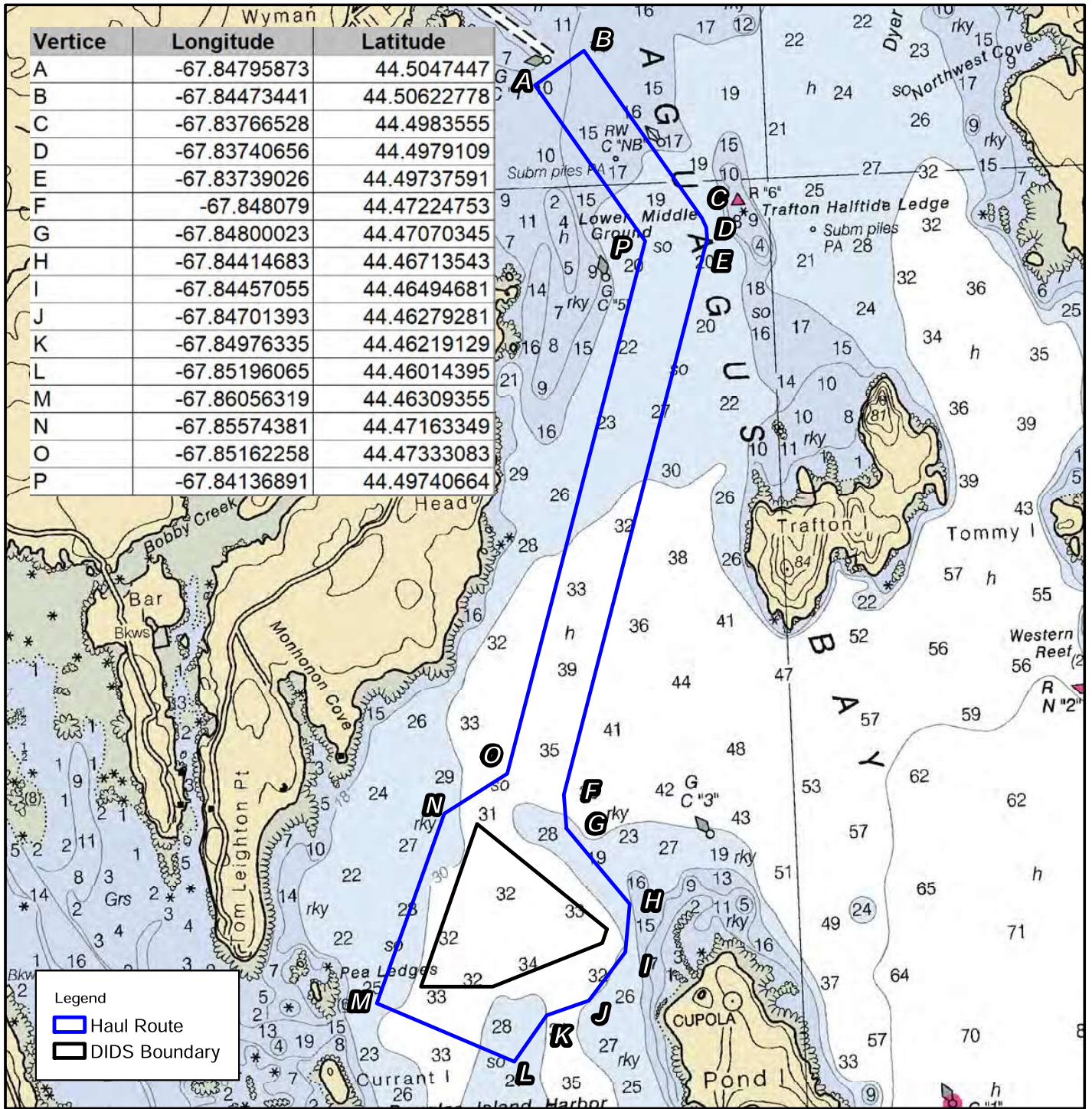
44°29'0"N

44°28'0"N

44°30'0"N

44°29'0"N

44°28'0"N



Vertice	Longitude	Latitude
A	-67.84795873	44.5047447
B	-67.84473441	44.50622778
C	-67.83766528	44.4983555
D	-67.83740656	44.4979109
E	-67.83739026	44.49737591
F	-67.848079	44.47224753
G	-67.84800023	44.47070345
H	-67.84414683	44.46713543
I	-67.84457055	44.46494681
J	-67.84701393	44.46279281
K	-67.84976335	44.46219129
L	-67.85196065	44.46014395
M	-67.86056319	44.46309355
N	-67.85574381	44.47163349
O	-67.85162258	44.47333083
P	-67.84136891	44.49740664

Legend

- Haul Route
- DIDS Boundary

67°53'0"W

67°52'0"W

67°51'0"W

67°50'0"W

67°49'0"W

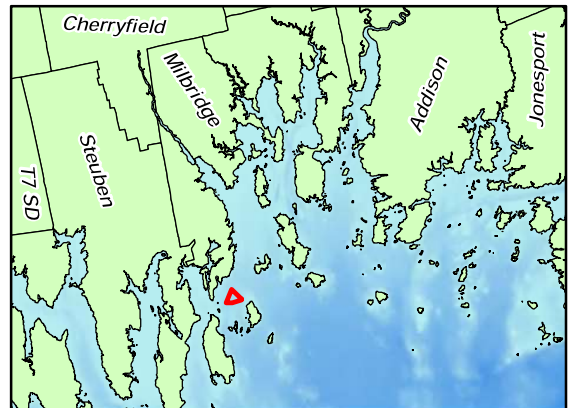
US Army Corps of Engineers
New England District

NARRAGUAGUS RIVER FNP HAUL ROUTE

0 0.5 1 Miles
0 1 2 Kilometers

1:27,000

Bathymetry: NOAA Chart 13009
Coordinate System: NAD 83



FOR PERMIT PURPOSES ONLY
NOT FOR CONSTRUCTION

NARRAGUAGUS RIVER

MEAN LOWER LOW WATER LINE (MLLW)
 ELEVATION = 0'

EXTENT OF LIDAR DATA

End of Pier

PIER LOCATION
 BASED ON
 AERIAL

End of Rip-Rap

End of Launch Ramp

MEAN LOW WATER LINE (MLW)
 ELEVATION = 0.3'

MEAN HIGH WATER LINE (MHW)
 ELEVATION = 11.4'

UPLAND EDGE OF COASTAL WETLAND

TYPICAL APPROX. DEPTH
 RELATIVE TO MLLW (CoE)

6.6 9.1
 6.5 9.5
 6.3 9.2
 6.2 9.1
 6.4 9.2
 6.9 9.1
 6.3 9.1
 6.6








DREDGE WINDOW
 50'


400'

BATHYMETRIC DATA PROVIDED BY ECO-ANALYSTS, INC.

APPROX. LOCATION OF 9-FOOT
 CHANNEL (REACH 1)

LEGEND

-  APPROXIMATE PROPERTY LINE (TAX MAP)
-  SETBACK
-  EXISTING CONTOUR
-  FEMA FLOOD ZONE DIVISION
-  UPLAND EDGE OF COASTAL WETLAND/HIGHEST ANNUAL TIDE LINE
-  MEAN HIGH WATER LINE (MHW)
-  MEAN LOW WATER LINE (MLW)

0 80

 SCALE: 1" = 80'

DREDGE SKETCH
PLAN
 SCALE: 1" = 80'

CHRISTOPHER & MONICA T. CHIPMAN,
ECO-ANALYSTS, INC.
 304 WYMAN ROAD, MILBRIDGE, MAINE

OCTOBER 9, 2024

PROJ. NO. 2024-0452

SK1

r:\land Projects 3\24\0452\Crawford\240452_Civil.dwg