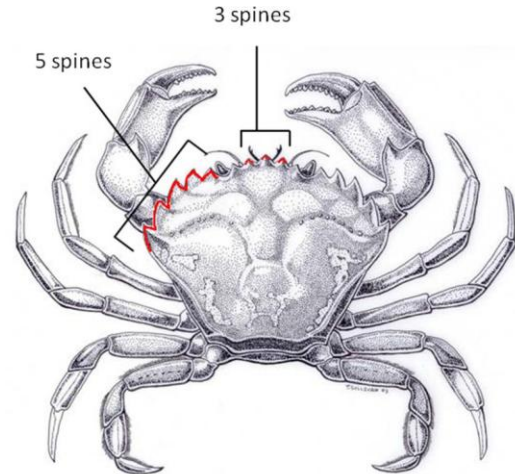


How to identify a Green Crab

(*Carcinus maenas*)

- Set of five triangular spines on each side of shell (carapace).
- Three rounded lobes (bumps) between the eyes.
- Last pair of legs somewhat flattened.
- Not always green, color may vary

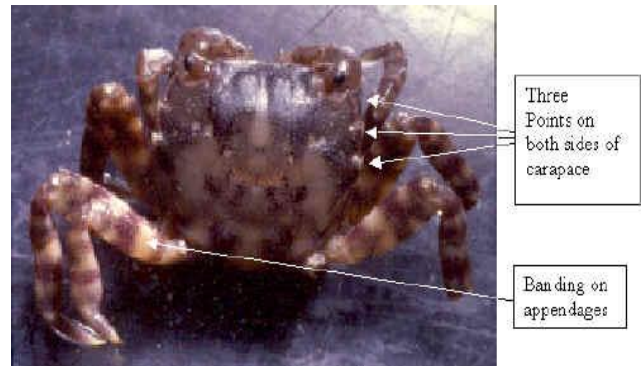


Other similar Crabs:

Asian Shore Crab

(*Hemigrapsus sanguineus*)

- Small hard bubble at the crux of its claws
- Three spines along each side of its shell
- Light-and-dark banding pattern on its legs.



Rock (peekytoe) Crab (*Cancer irroratus*)

Nine smooth marginal "teeth" on each side of shell, carapace is smooth.

Jonah Crab (*Cancer borealis*)

Jagged marginal teeth, carapace is rough

Toad Crab (*Hyas araneus*)

Shell is narrow and triangular, legs are long and spindly (resemble a spider), shell often decorated or camouflaged with plants and animals