

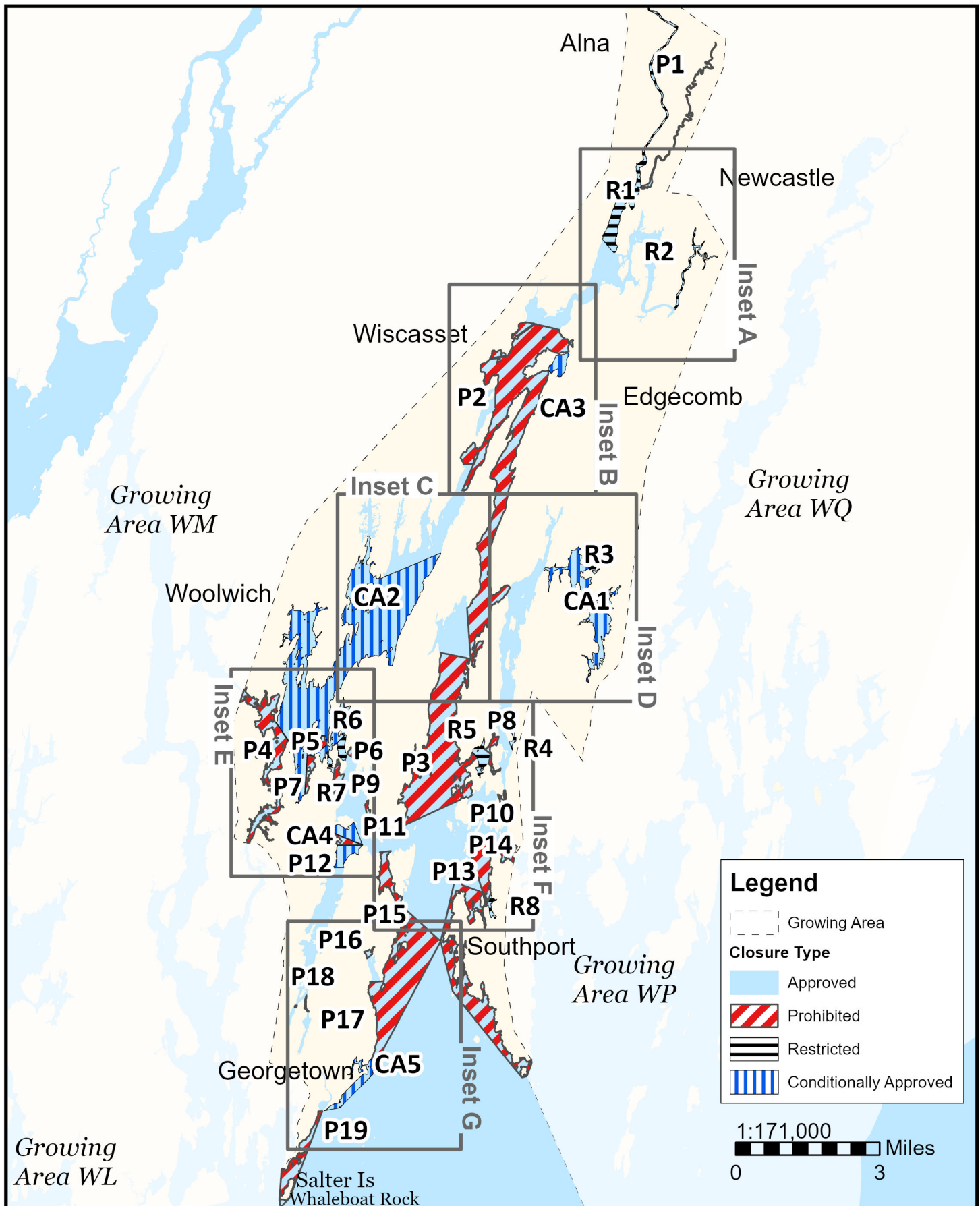


Maine Department of Marine Resources

Growing Area WN, Insets A - G

7/3/25

Alna, Woolwich, Georgetown, Boothbay, Southport



This map is provided as a courtesy. Read the provided legal notice for closure details. Closures are not shown outside of the designated growing area. Maritime navigational aids are for reference only and are not suitable for maritime navigation.

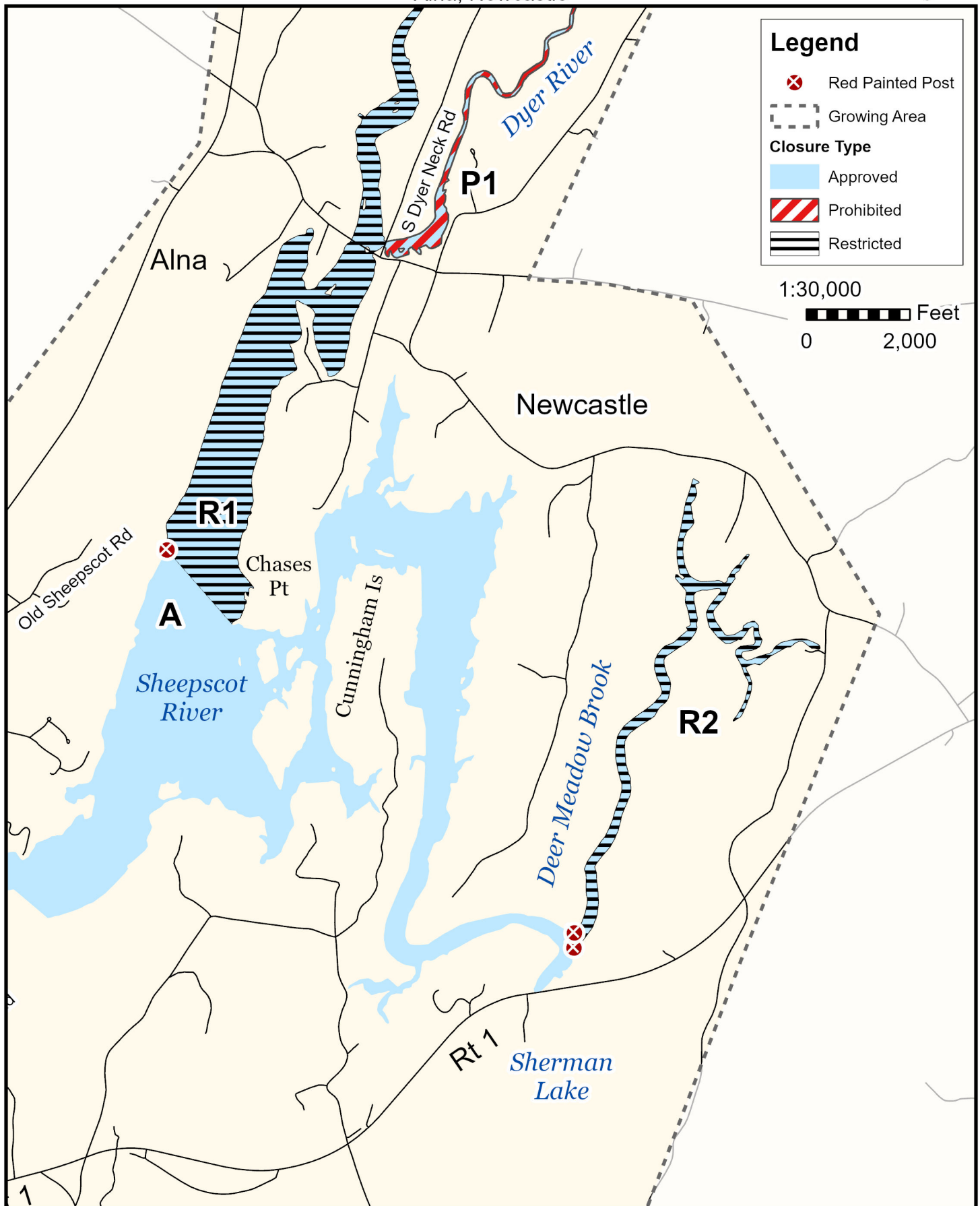


Maine Department of Marine Resources

Growing Area WN, Inset A

7/3/25

Alna, Newcastle



This map is provided as a courtesy. Read the provided legal notice for closure details. Closures are not shown outside of the designated growing area. Maritime navigational aids are for reference only and are not suitable for maritime navigation.

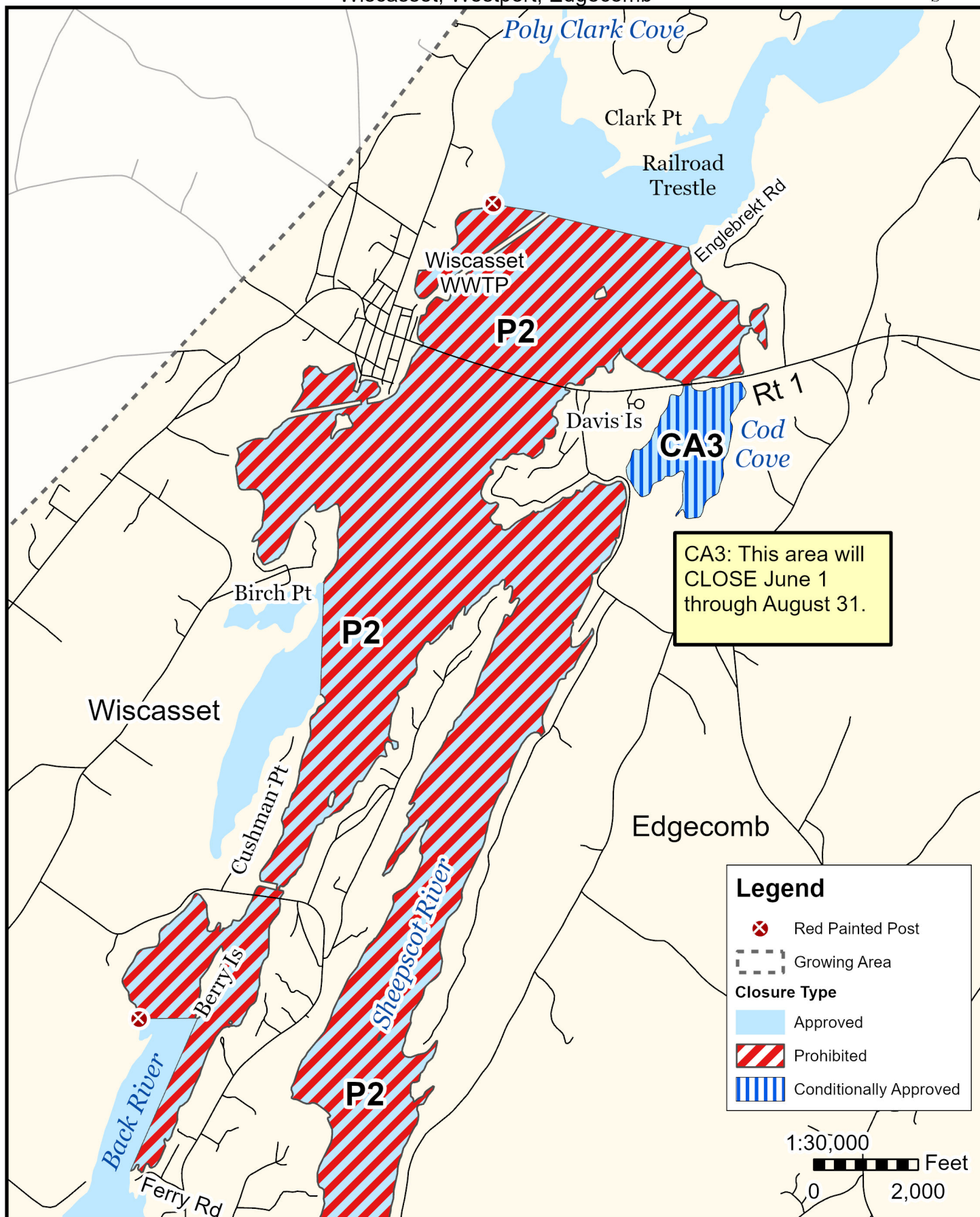
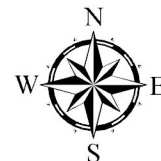


Maine Department of Marine Resources

Growing Area WN, Inset B

7/3/25

Wiscasset, Westport, Edgecomb



This map is provided as a courtesy. Read the provided legal notice for closure details. Closures are not shown outside of the designated growing area. Maritime navigational aids are for reference only and are not suitable for maritime navigation.

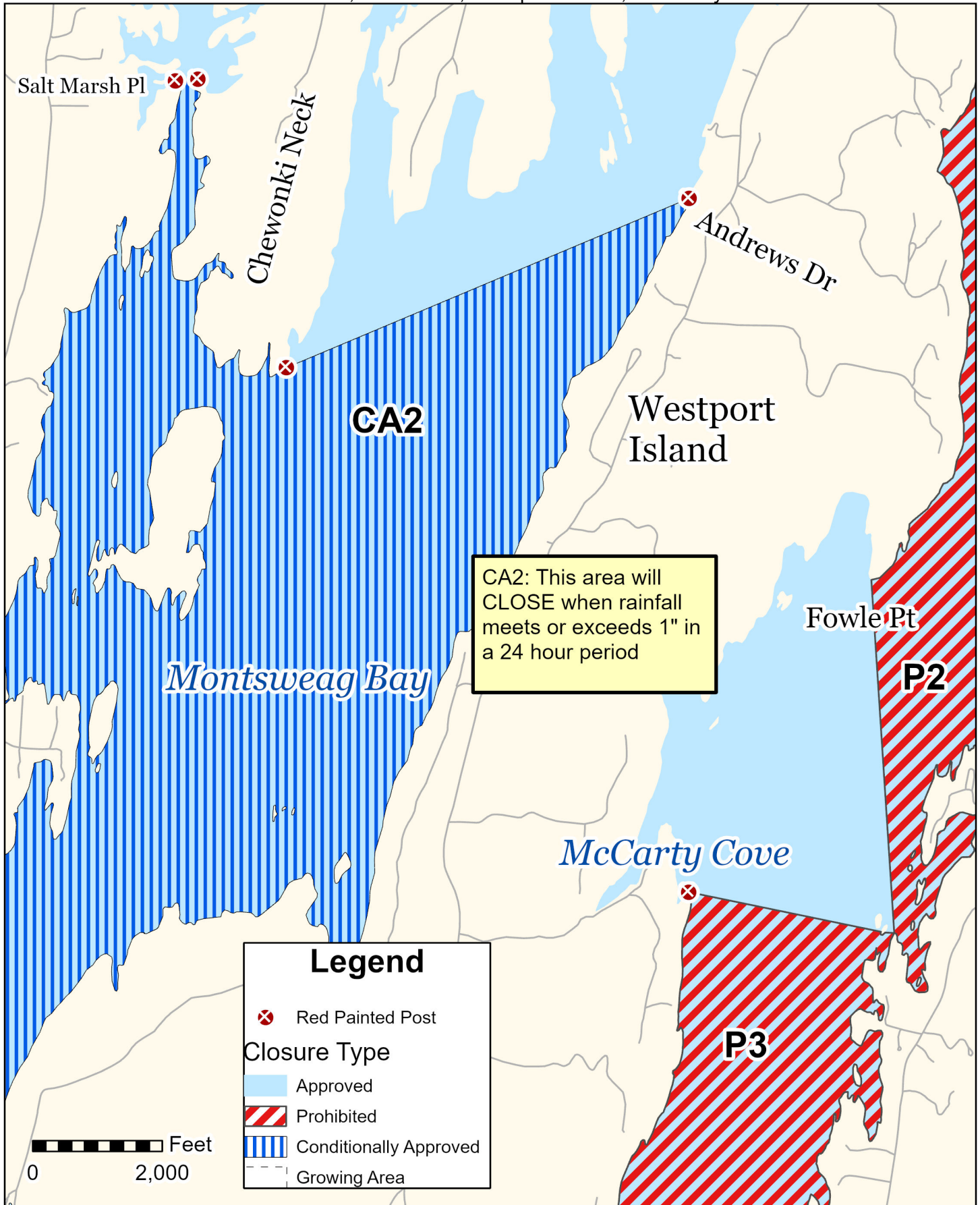


Maine Department of Marine Resources

Growing Area WN, Inset C

7/3/25

Woolwich, Wiscasset, Westport Island, Boothbay



This map is provided as a courtesy. Read the provided legal notice for closure details. Closures are not shown outside of the designated growing area. Maritime navigational aids are for reference only and are not suitable for maritime navigation.

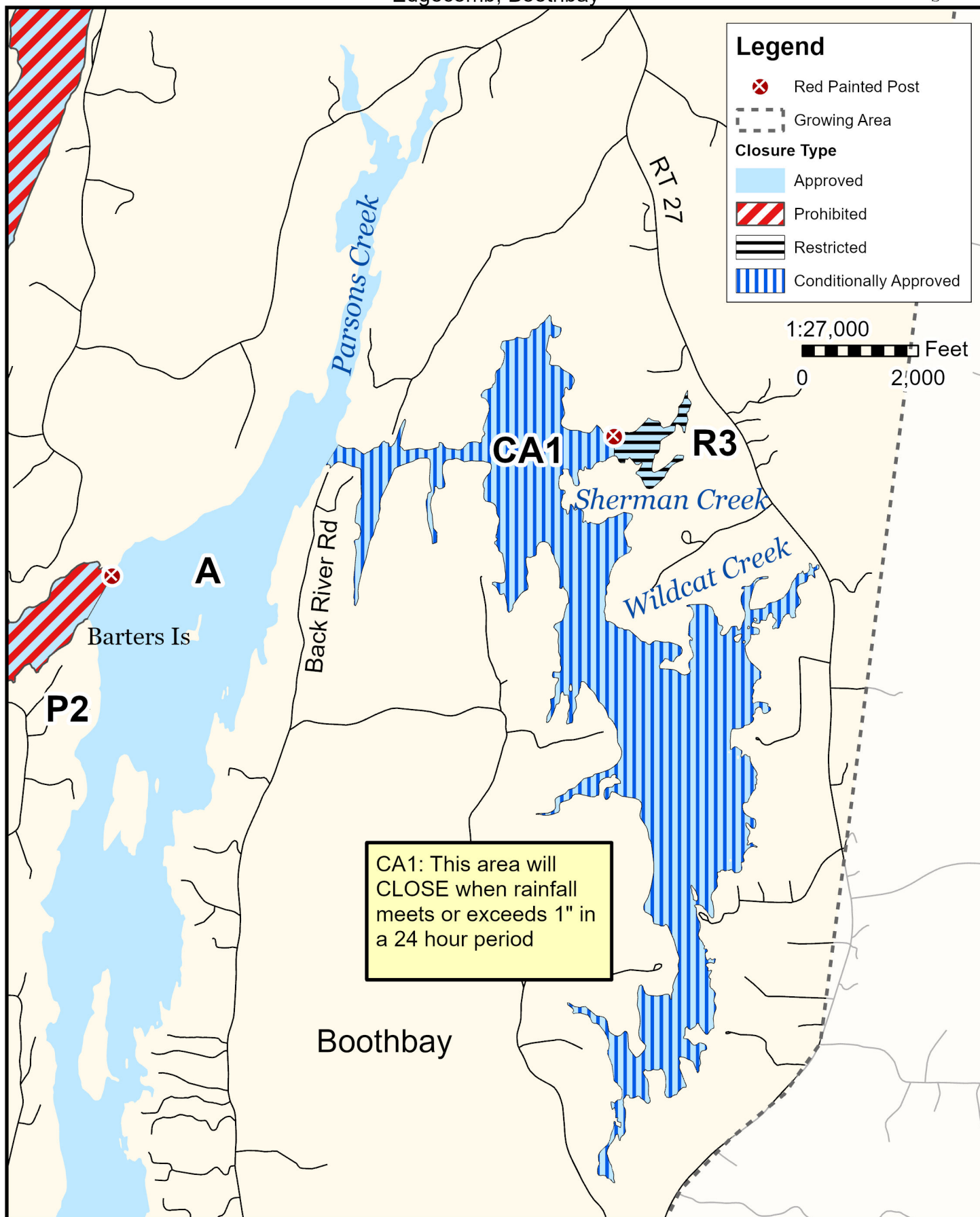


Maine Department of Marine Resources

Growing Area WN, Inset D

7/3/25

Edgecomb, Boothbay



This map is provided as a courtesy. Read the provided legal notice for closure details. Closures are not shown outside of the designated growing area. Maritime navigational aids are for reference only and are not suitable for maritime navigation.

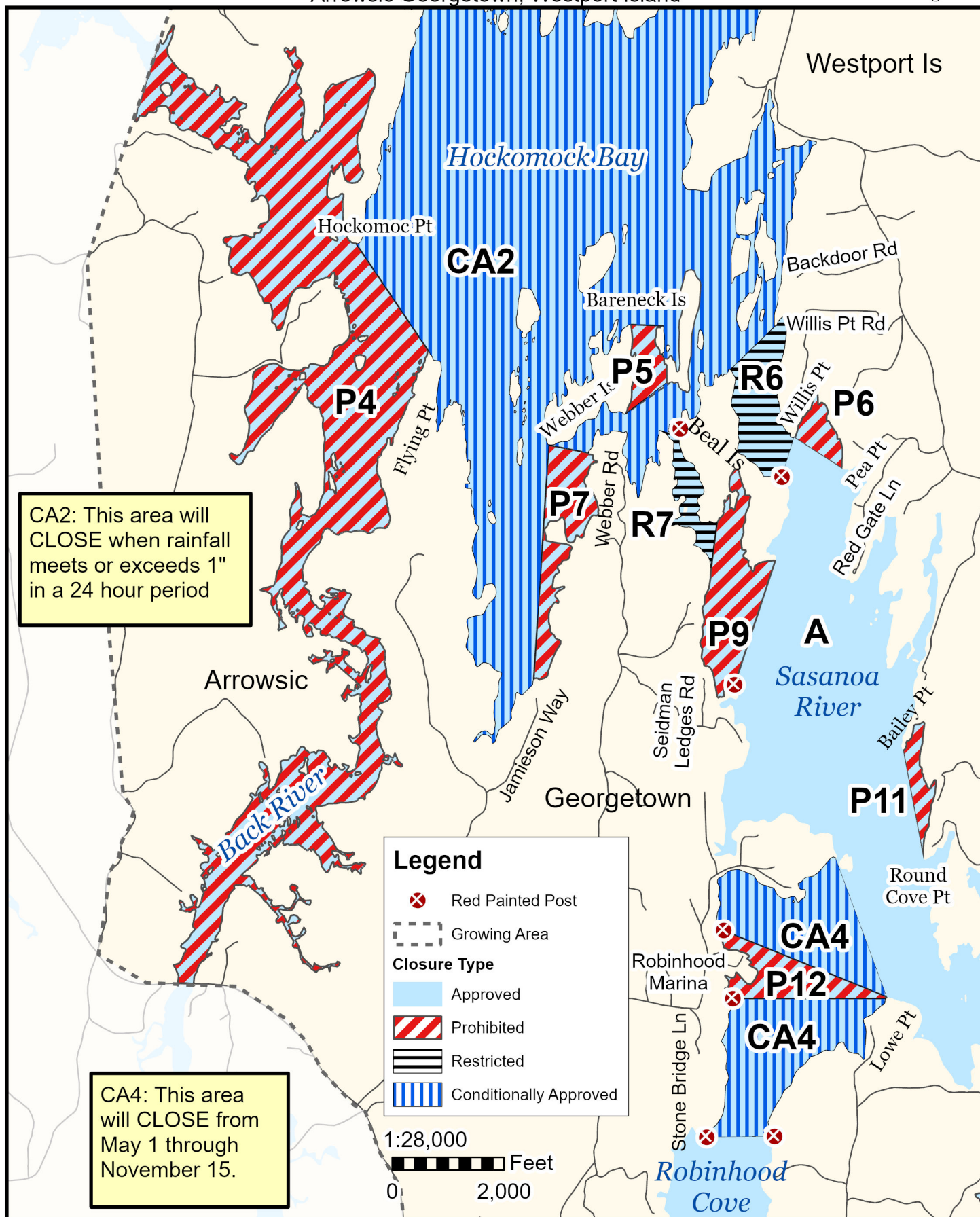


Maine Department of Marine Resources

Growing Area WN, Inset E

7/3/25

Arrowsic Georgetown, Westport Island



This map is provided as a courtesy. Read the provided legal notice for closure details. Closures are not shown outside of the designated growing area. Maritime navigational aids are for reference only and are not suitable for maritime navigation.

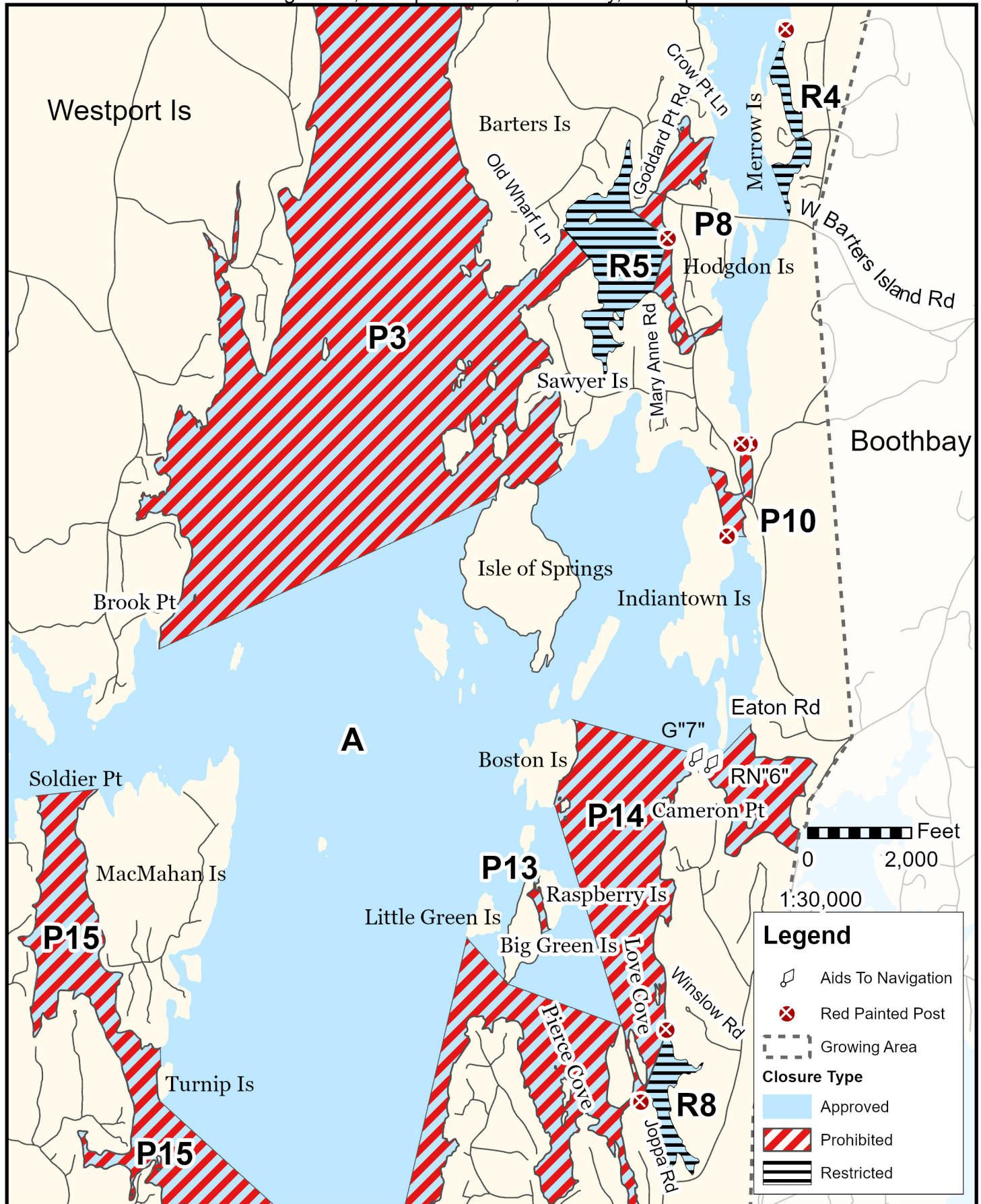


Maine Department of Marine Resources

Growing Area WN, Inset F

7/3/25

Georgetown, Westport Island, Boothbay, Southport



This map is provided as a courtesy. Read the provided legal notice for closure details. Closures are not shown outside of the designated growing area. Maritime navigational aids are for reference only and are not suitable for maritime navigation.

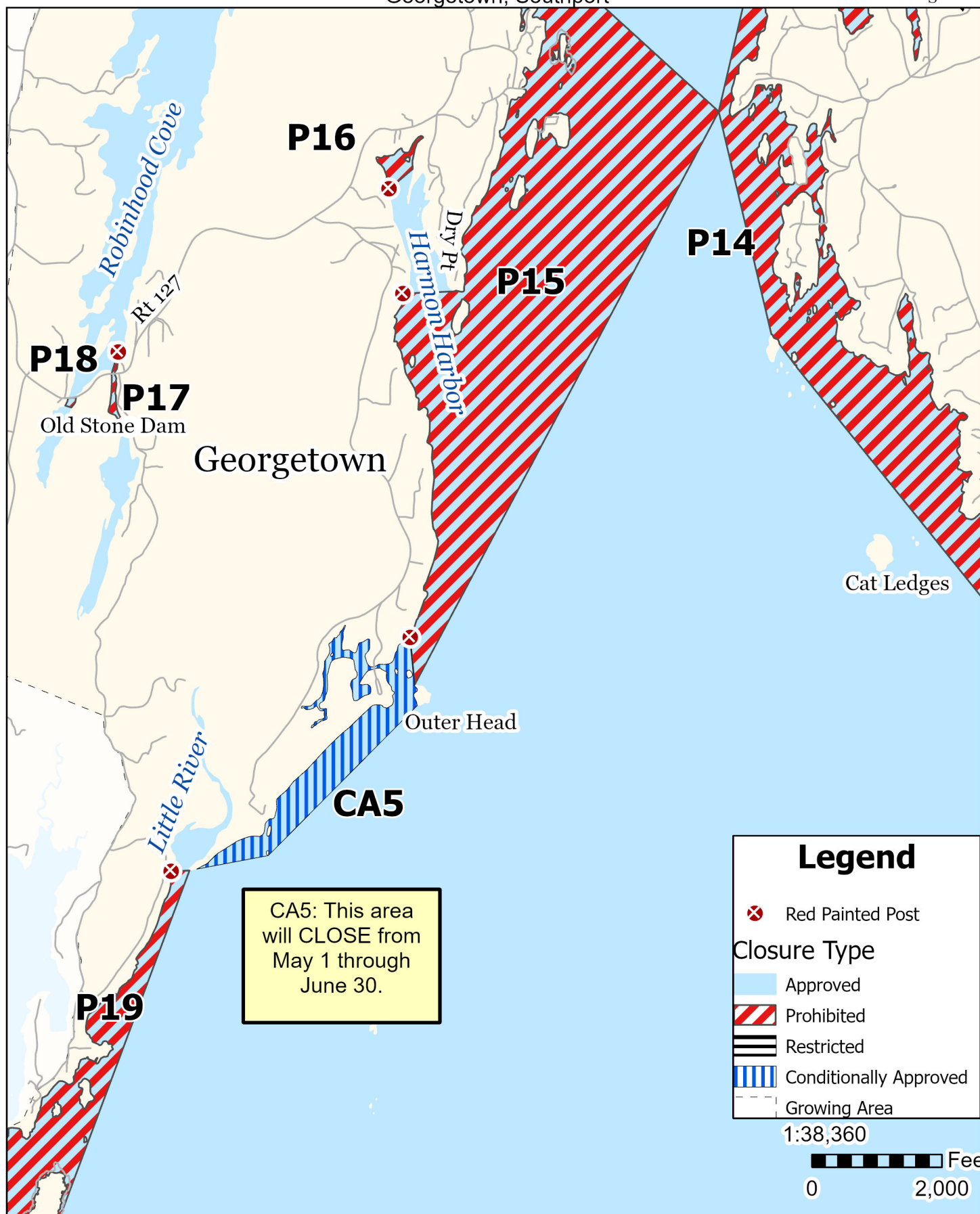
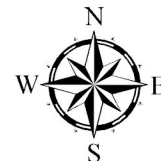


Maine Department of Marine Resources

Growing Area WN, Inset G

7/3/25

Georgetown, Southport



This map is provided as a courtesy. Read the provided legal notice for closure details. Closures are not shown outside of the designated growing area. Maritime navigational aids are for reference only and are not suitable for maritime navigation.