

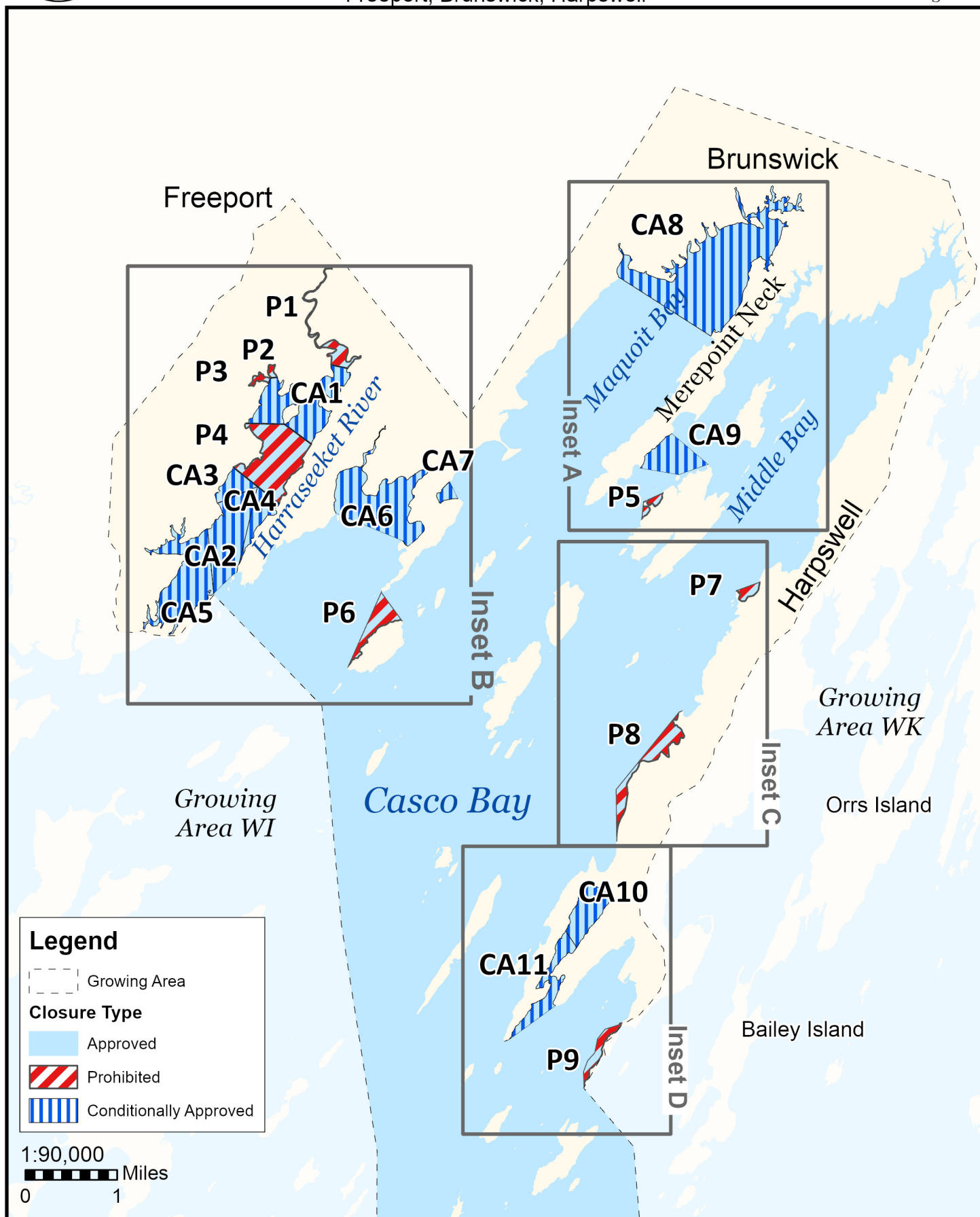
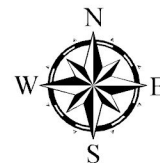


# Maine Department of Marine Resources

*Growing Area WJ, Insets A - D*

May 28, 2025

Freeport, Brunswick, Harpswell



This map is provided as a courtesy. Read the provided legal notice for closure details. Closures are not shown outside of the designated growing area. Maritime navigational aids are for reference only and are not suitable for maritime navigation.

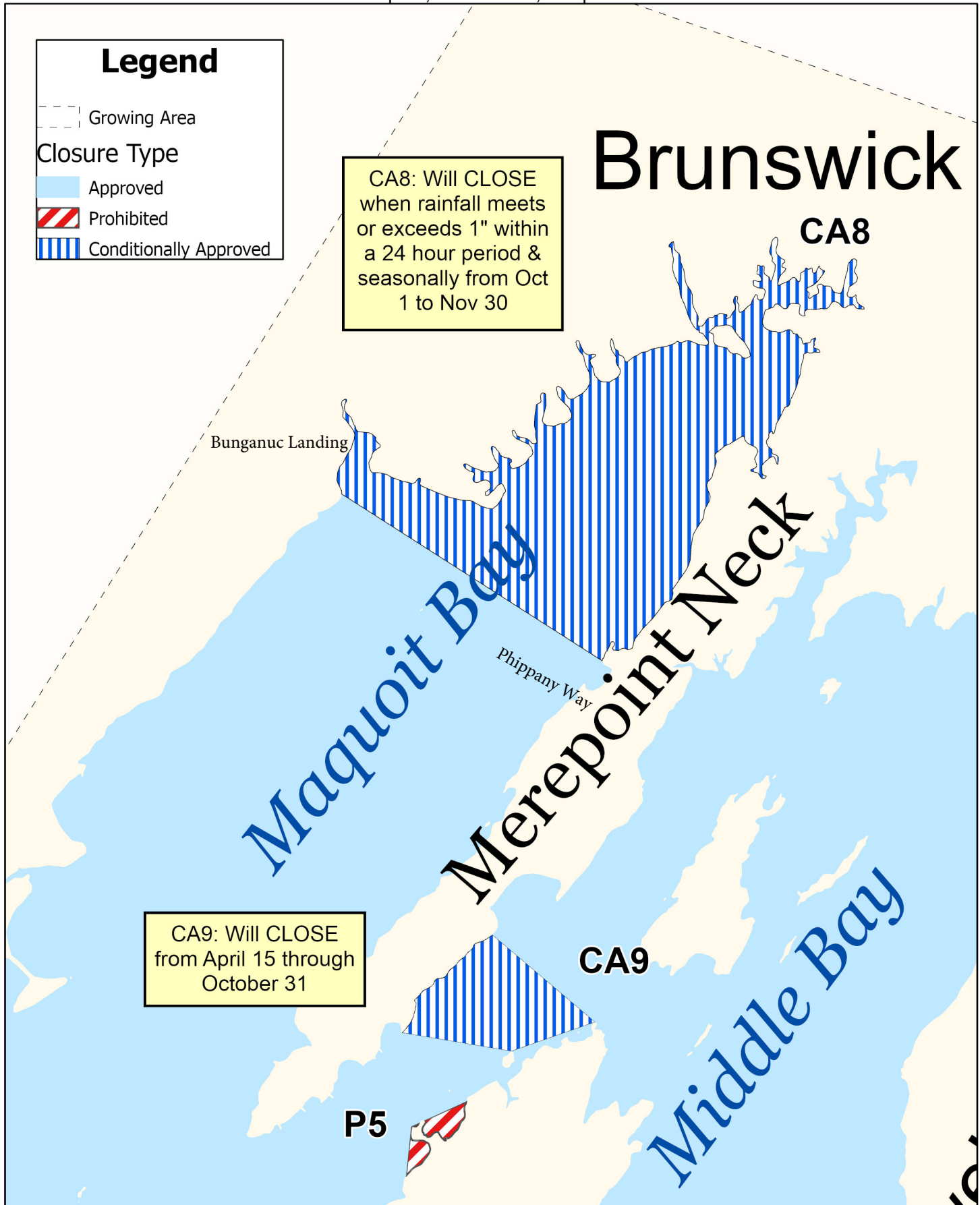


# Maine Department of Marine Resources

## Growing Area WJ, Inset A

Freeport, Brunswick, Harpswell

May 28, 2025



This map is provided as a courtesy. Read the provided legal notice for closure details. Closures are not shown outside of the designated growing area. Maritime navigational aids are for reference only and are not suitable for maritime navigation.

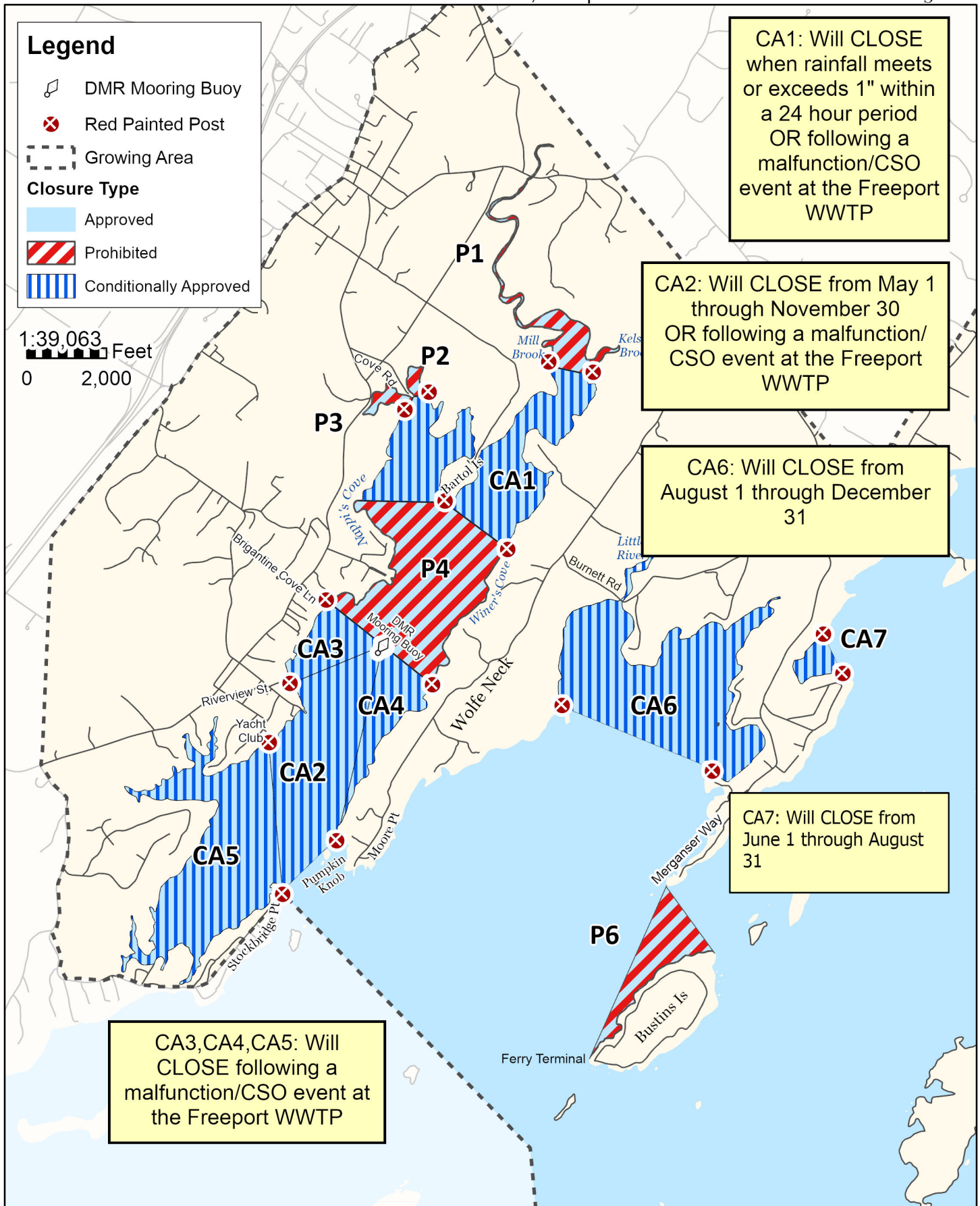


# Maine Department of Marine Resources

## Growing Area WJ, Inset B

Harraseeket River, Freeport

May 28, 2025



This map is provided as a courtesy. Read the provided legal notice for closure details. Closures are not shown outside of the designated growing area. Maritime navigational aids are for reference only and are not suitable for maritime navigation.



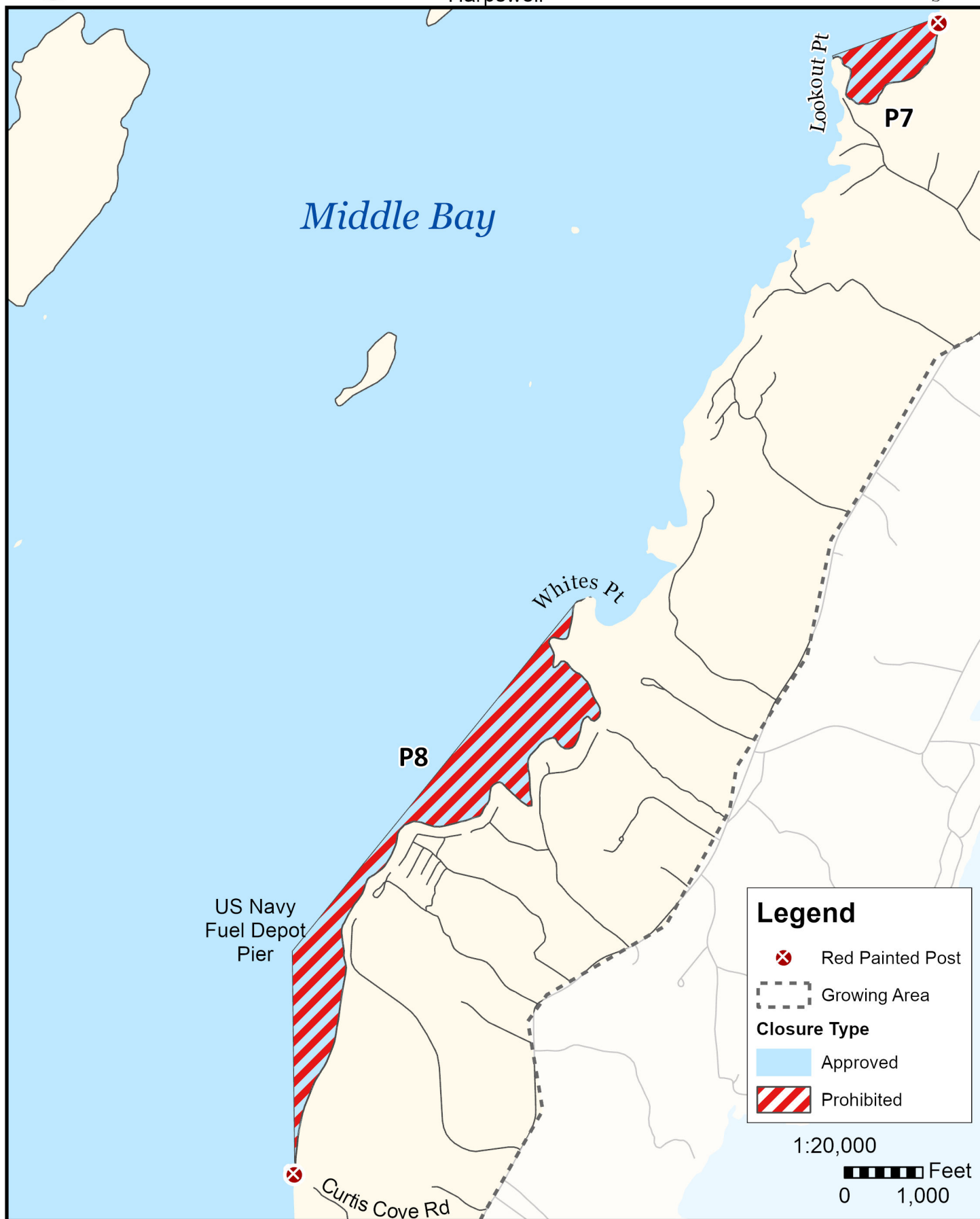


# Maine Department of Marine Resources

Growing Area WJ, Inset C

Harpswell

May 28, 2025



This map is provided as a courtesy. Read the provided legal notice for closure details. Closures are not shown outside of the designated growing area. Maritime navigational aids are for reference only and are not suitable for maritime navigation.

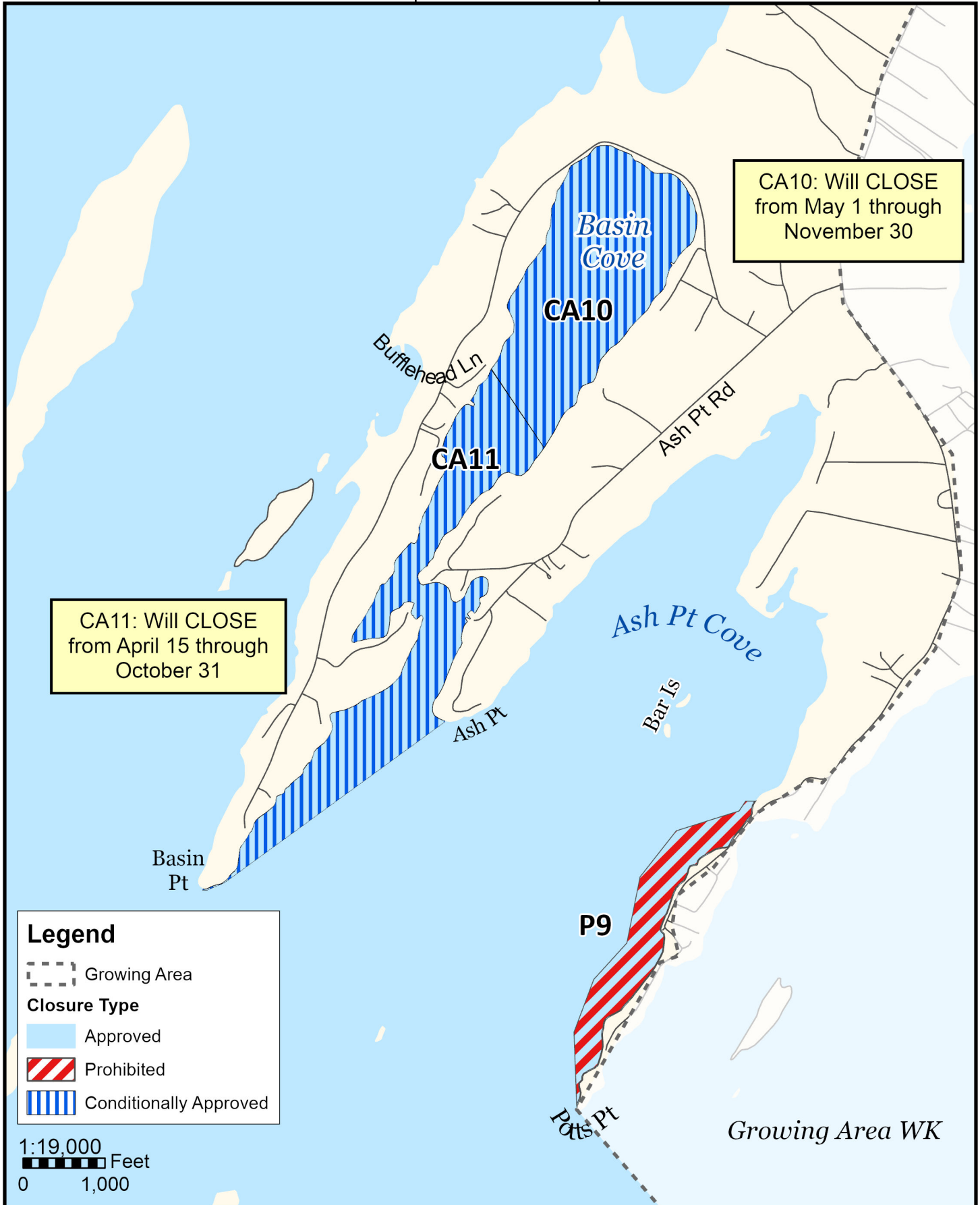


# Maine Department of Marine Resources

## Growing Area WJ, Inset D

West Harpswell & South Harpswell

May 28, 2025



This map is provided as a courtesy. Read the provided legal notice for closure details. Closures are not shown outside of the designated growing area. Maritime navigational aids are for reference only and are not suitable for maritime navigation.