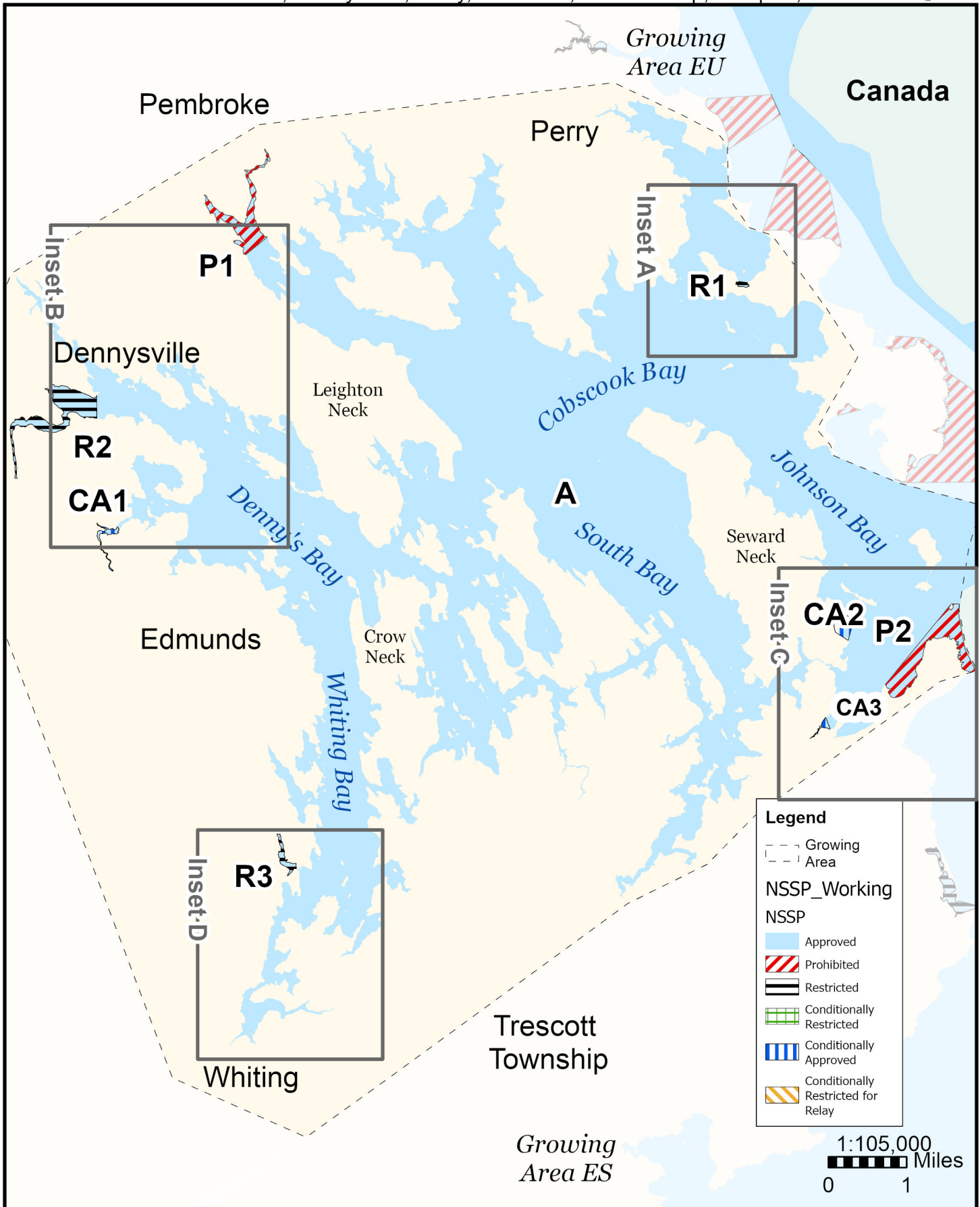


Maine Department of Marine Resources

Growing Area ET, Insets A - D

April 9, 2025

Pembroke, Dennysville, Perry, Edmunds, Trescott Twp, Eastport,



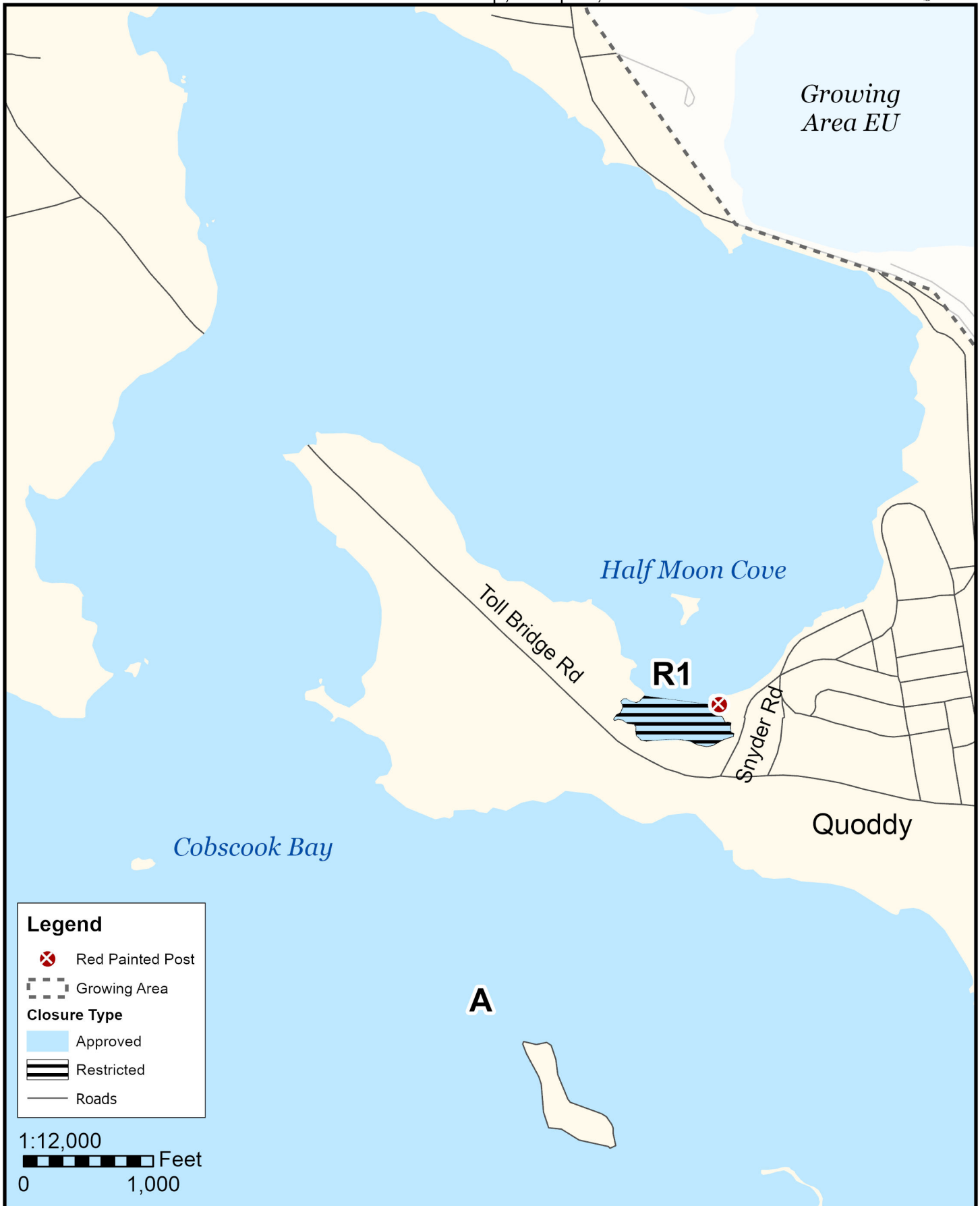
This map is provided as a courtesy. Read the provided legal notice for closure details. Closures are not shown outside of the designated growing area. Maritime navigational aids are for reference only and are not suitable for maritime navigation.

Maine Department of Marine Resources

Growing Area ET, Inset A

Trescott Twp, Eastport,

April 9, 2025

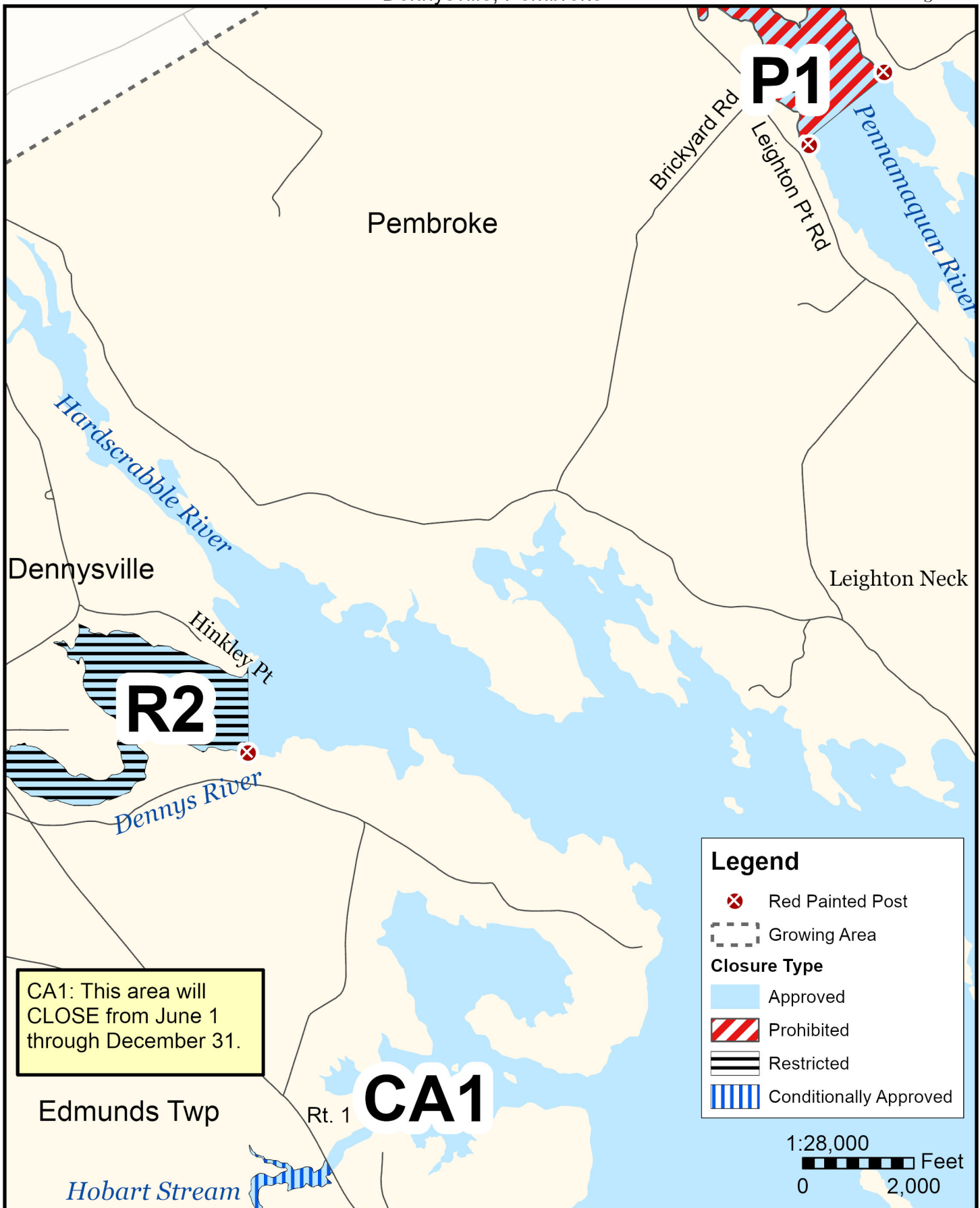


This map is provided as a courtesy. Read the provided legal notice for closure details. Closures are not shown outside of the designated growing area. Maritime navigational aids are for reference only and are not suitable for maritime navigation.

Maine Department of Marine Resources

Growing Area ET, Inset B Dennysville, Pembroke

April 9, 2025



CA1: This area will
CLOSE from June 1
through December 31.

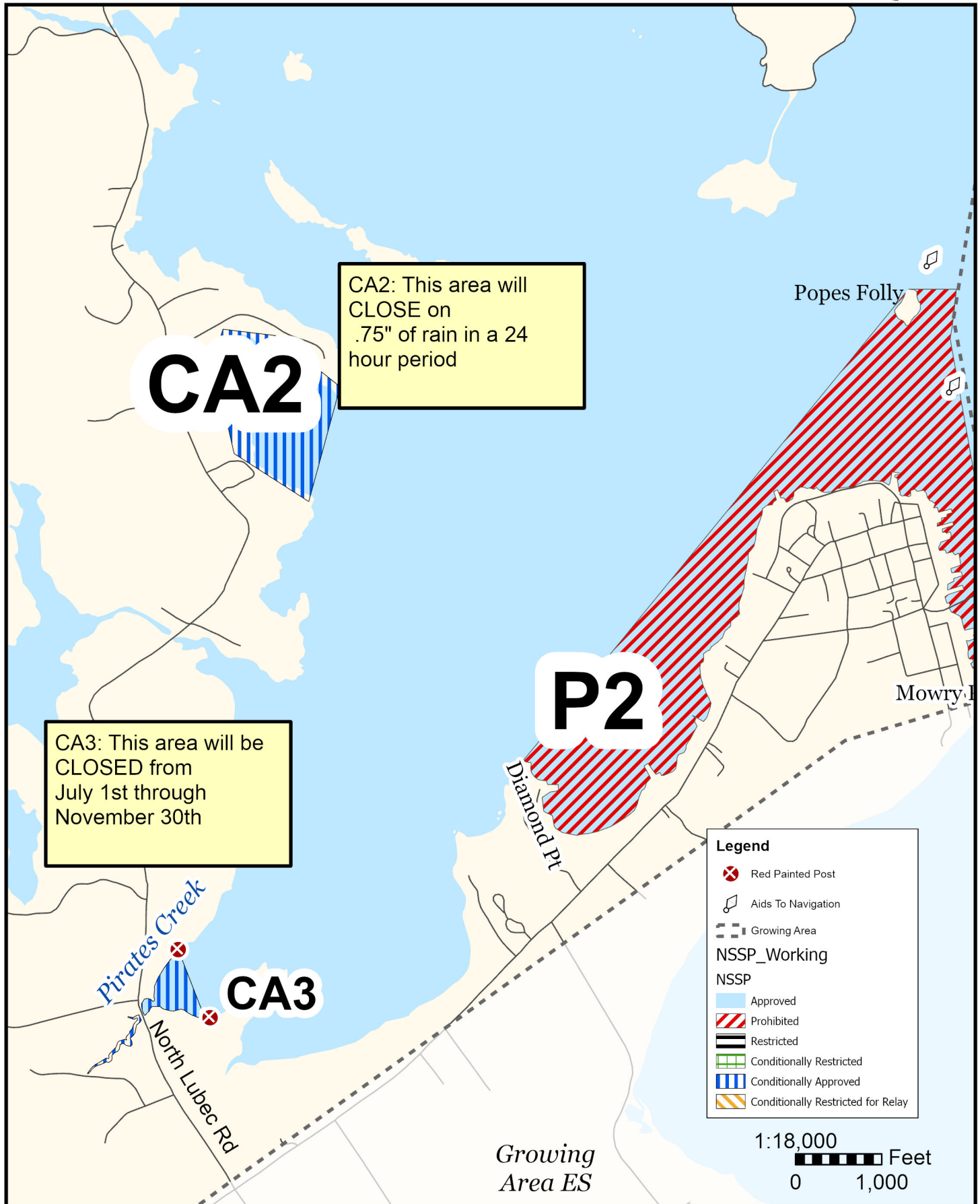
This map is provided as a courtesy. Read the provided legal notice for closure details. Closures are not shown outside of the designated growing area. Maritime navigational aids are for reference only and are not suitable for maritime navigation.

Maine Department of Marine Resources

Growing Area ET, Inset C

Lubec

April 9, 2025

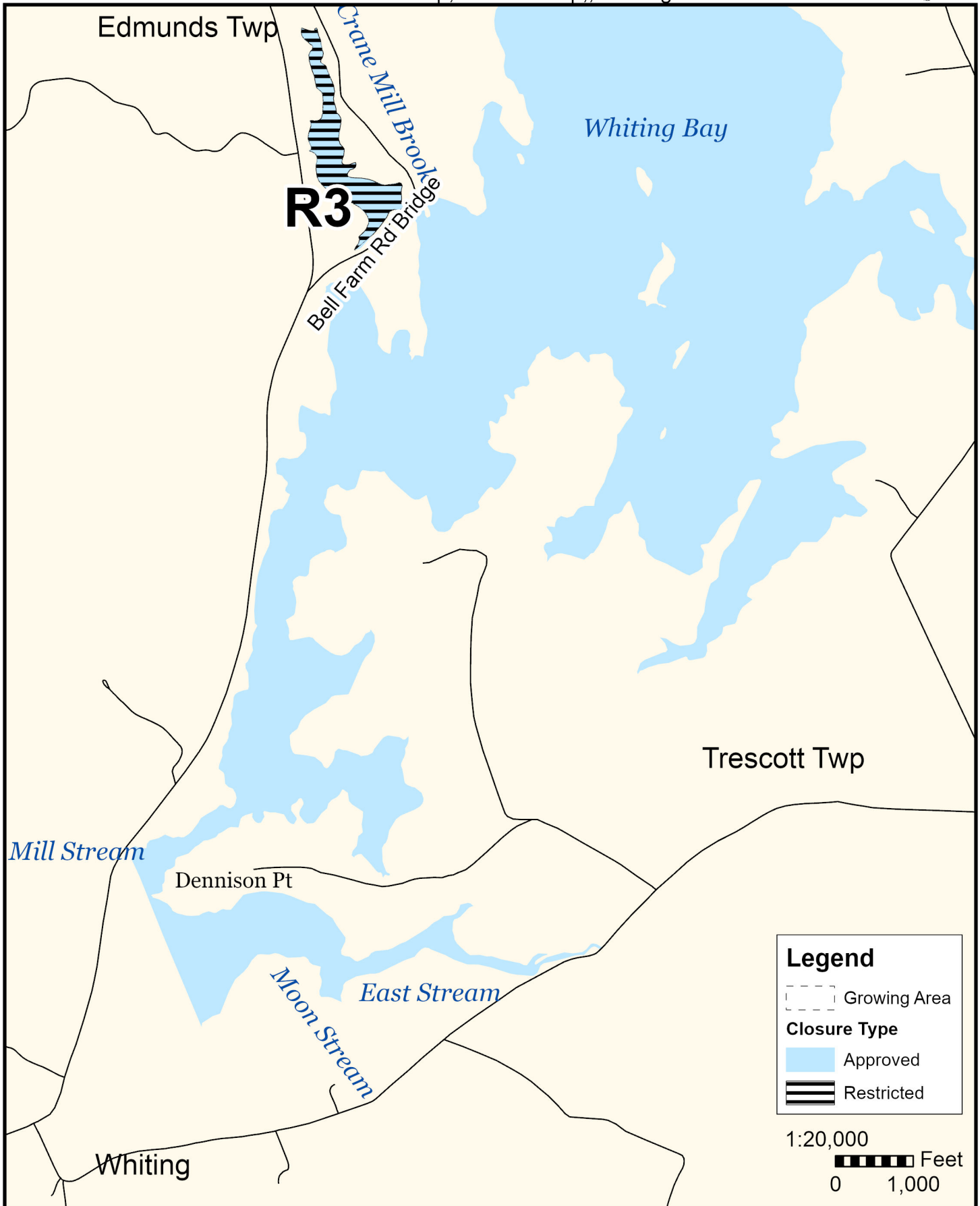


This map is provided as a courtesy. Read the provided legal notice for closure details. Closures are not shown outside of the designated growing area. Maritime navigational aids are for reference only and are not suitable for maritime navigation.

Maine Department of Marine Resources

Growing Area ET, Inset D Edmunds Twp, Trescott Twp., Whiting

April 9, 2025



This map is provided as a courtesy. Read the provided legal notice for closure details. Closures are not shown outside of the designated growing area. Maritime navigational aids are for reference only and are not suitable for maritime navigation.