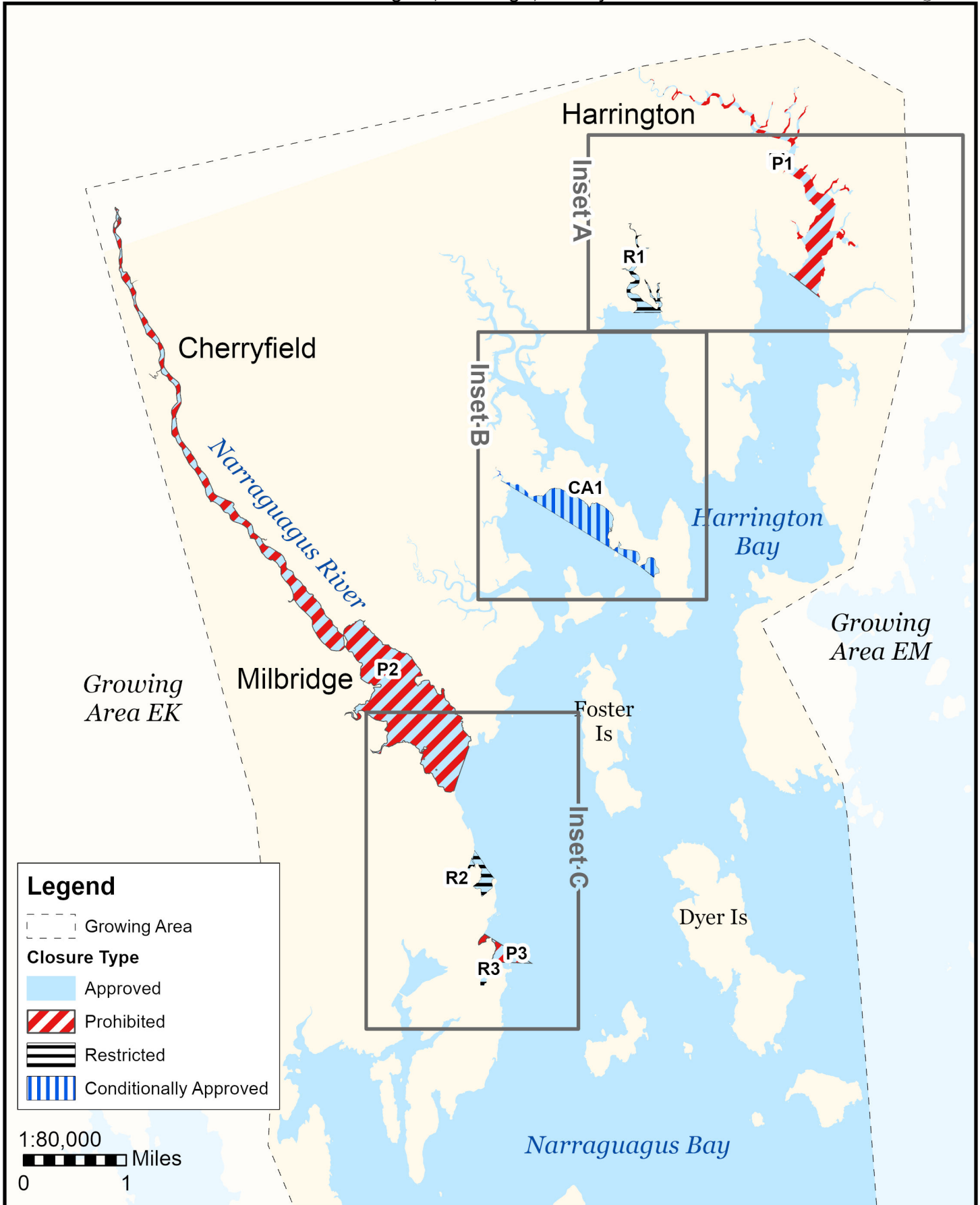


# Maine Department of Marine Resources

**Growing Area EL, Insets A - C**  
Harrington, Milbridge, Cherryfield

September 3, 2024

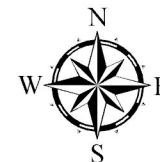


This map is provided as a courtesy. Read the provided legal notice for closure details. Closures are not shown outside of the designated growing area. Maritime navigational aids are for reference only and are not suitable for maritime navigation.

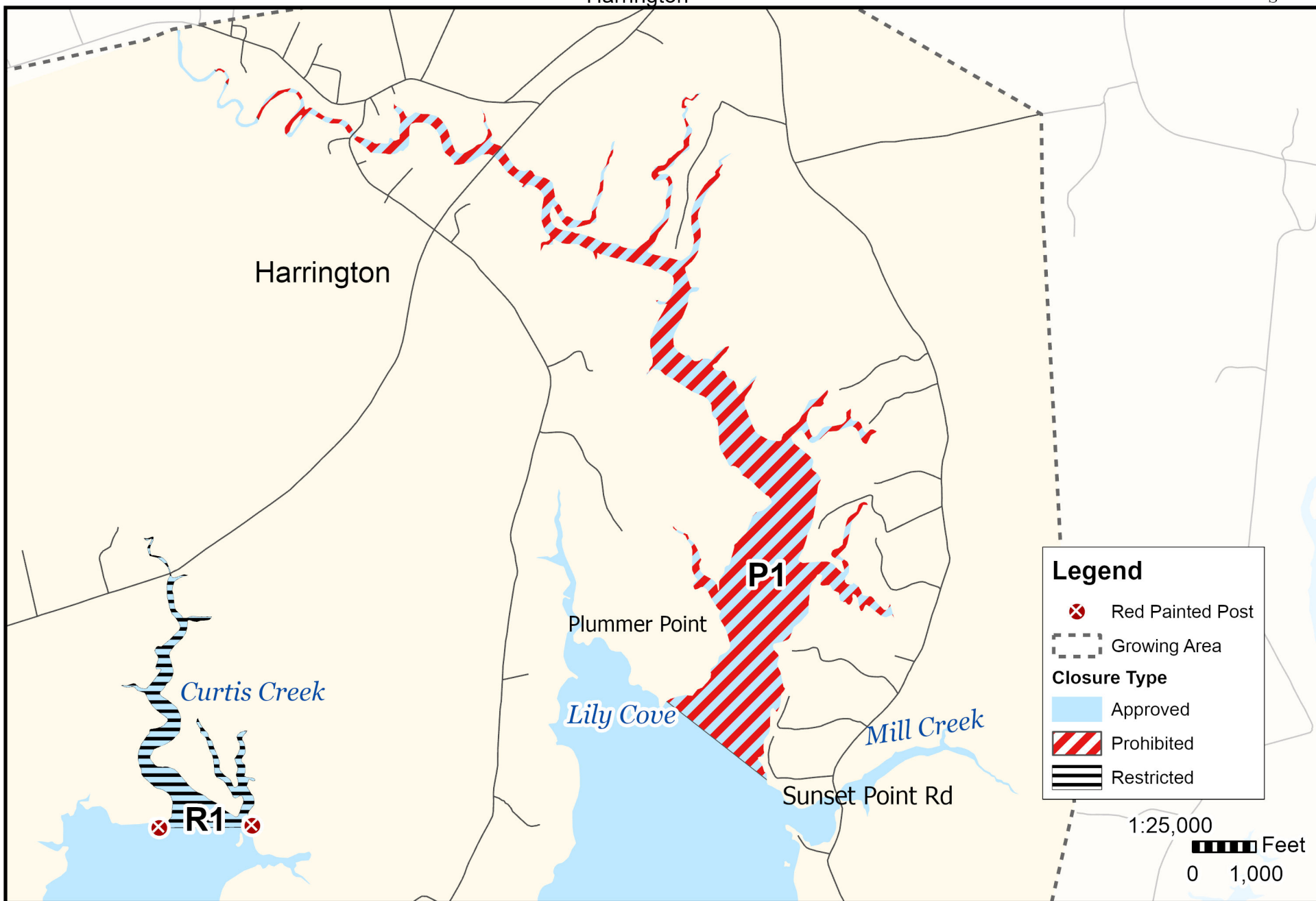
# Maine Department of Marine Resources

## Growing Area EL, Inset A

September 3, 2024



Harrington

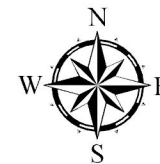


This map is provided as a courtesy. Read the provided legal notice for closure details. Closures are not shown outside of the designated growing area. Maritime navigational aids are for reference only and are not suitable for maritime navigation.

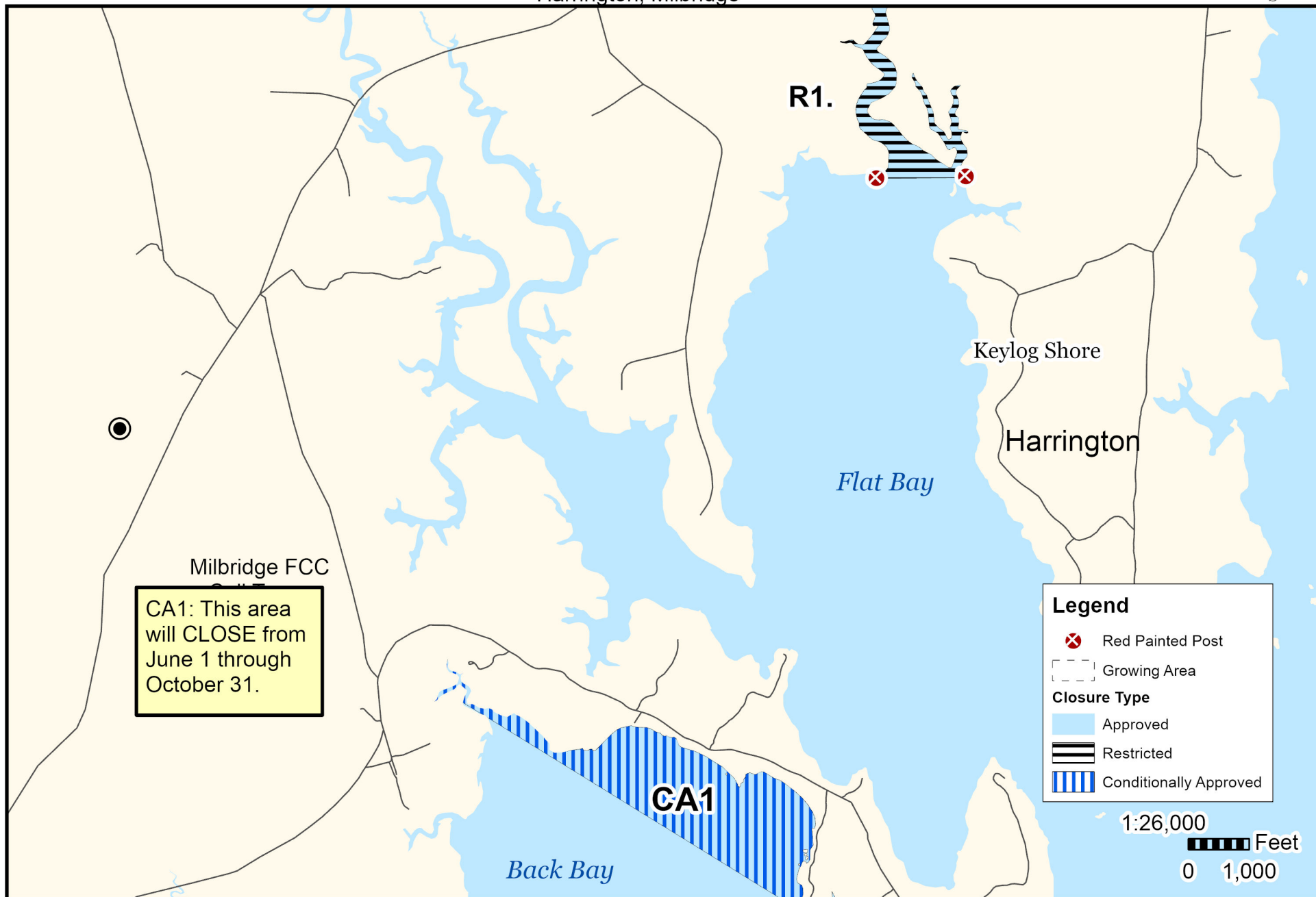
# Maine Department of Marine Resources

## Growing Area EL, Inset B

September 3, 2024



Harrington, Milbridge

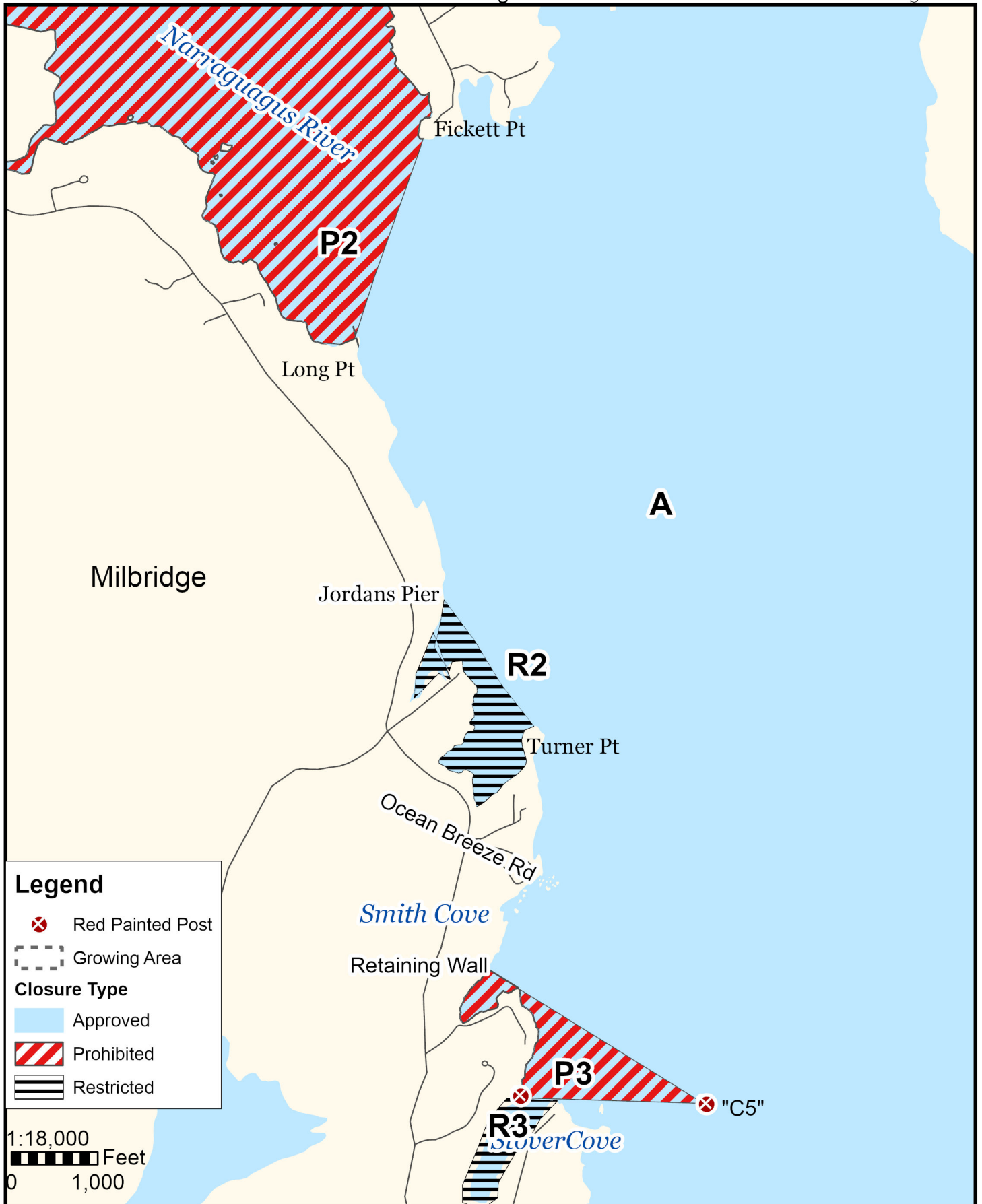


This map is provided as a courtesy. Read the provided legal notice for closure details. Closures are not shown outside of the designated growing area. Maritime navigational aids are for reference only and are not suitable for maritime navigation.

# Maine Department of Marine Resources

Growing Area *EL*, Inset C  
Milbridge

September 3, 2024



This map is provided as a courtesy. Read the provided legal notice for closure details. Closures are not shown outside of the designated growing area. Maritime navigational aids are for reference only and are not suitable for maritime navigation.