



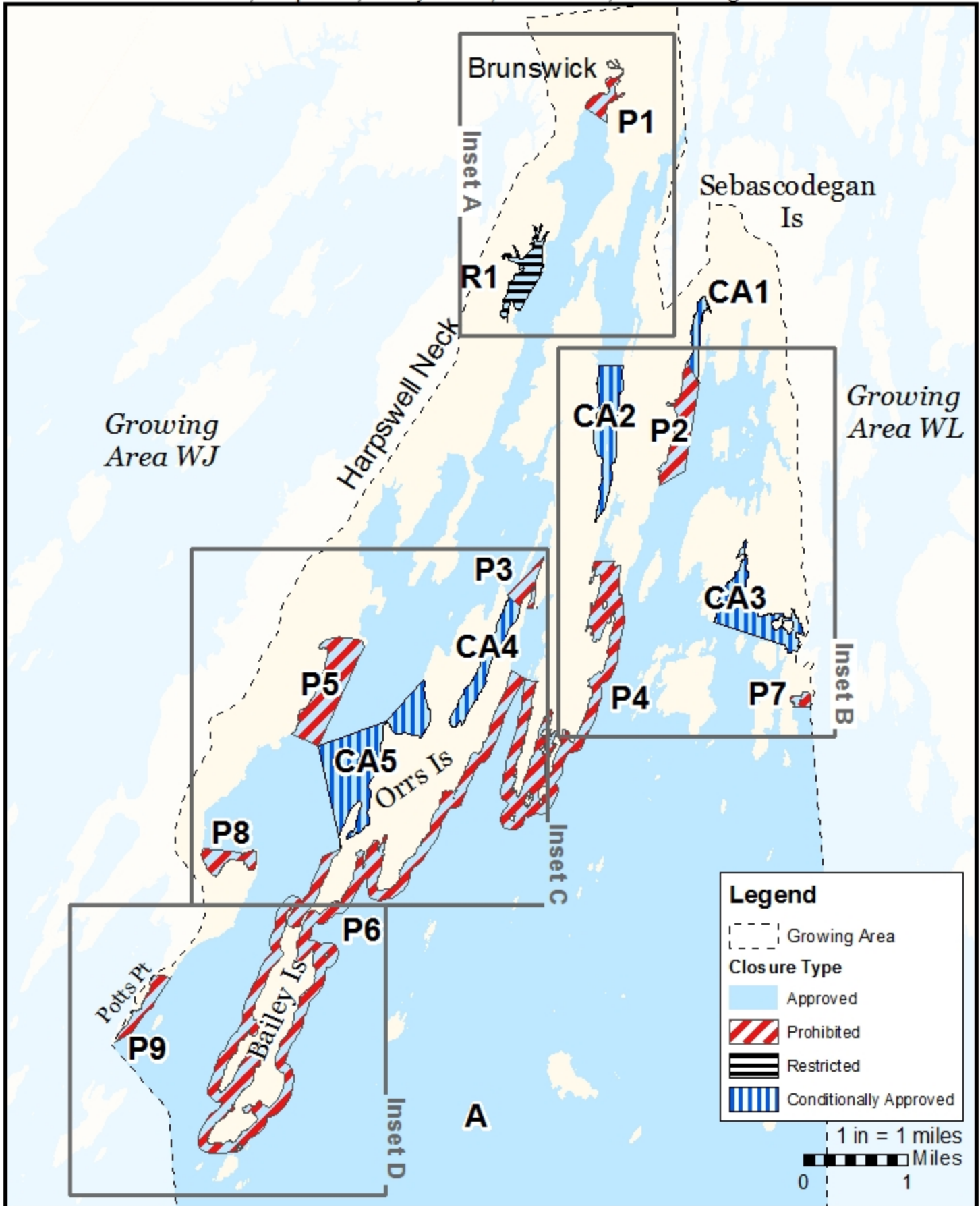
Maine Department of Marine Resources

Growing Area WK, Insets A - D

June 3, 2021



Brunswick, Harpswell, Bailey Island, Orrs Island, Sebascodogan Island



This map is provided as a courtesy. Read the provided legal notice for closure details. Closures are not shown outside of the designated growing area. Maritime navigational aids are for reference only and are not suitable for maritime navigation.



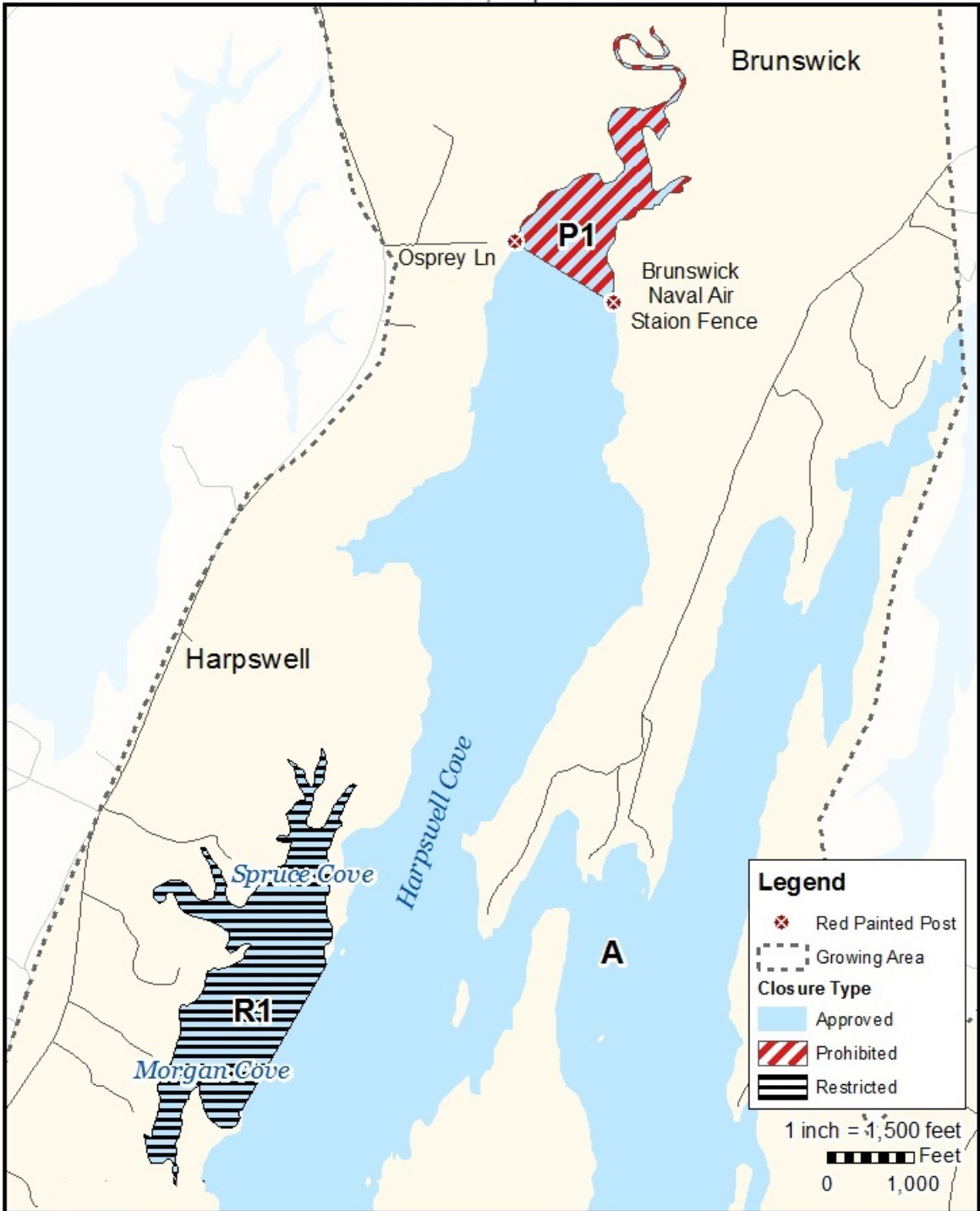
Maine Department of Marine Resources

Growing Area WK, Inset A

June 3, 2021



Brunswick, Harpswell



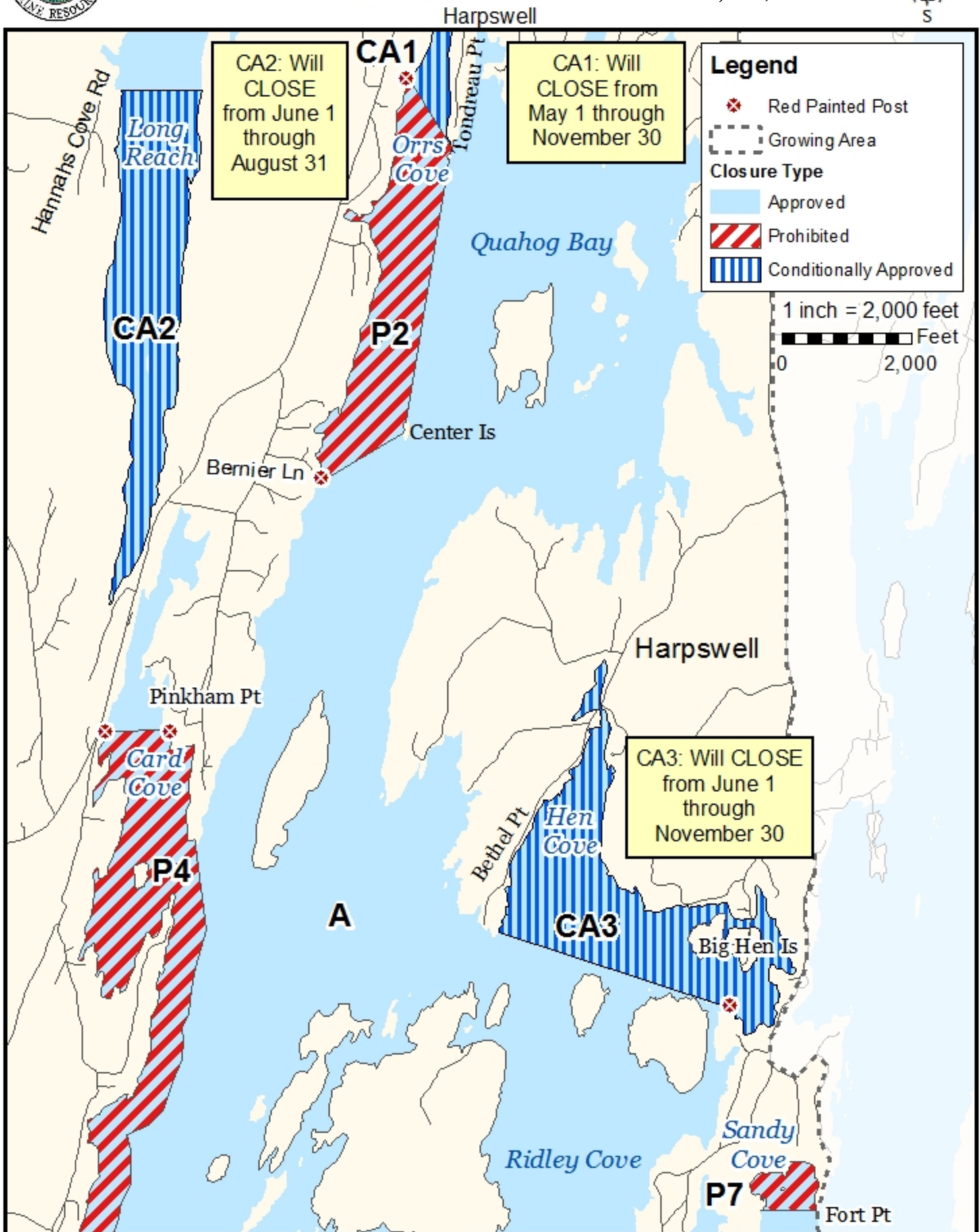
This map is provided as a courtesy. Read the provided legal notice for closure details. Closures are not shown outside of the designated growing area. Maritime navigational aids are for reference only and are not suitable for maritime navigation.



Maine Department of Marine Resources

Growing Area WK, Inset B

June 3, 2021



This map is provided as a courtesy. Read the provided legal notice for closure details. Closures are not shown outside of the designated growing area. Maritime navigational aids are for reference only and are not suitable for maritime navigation.

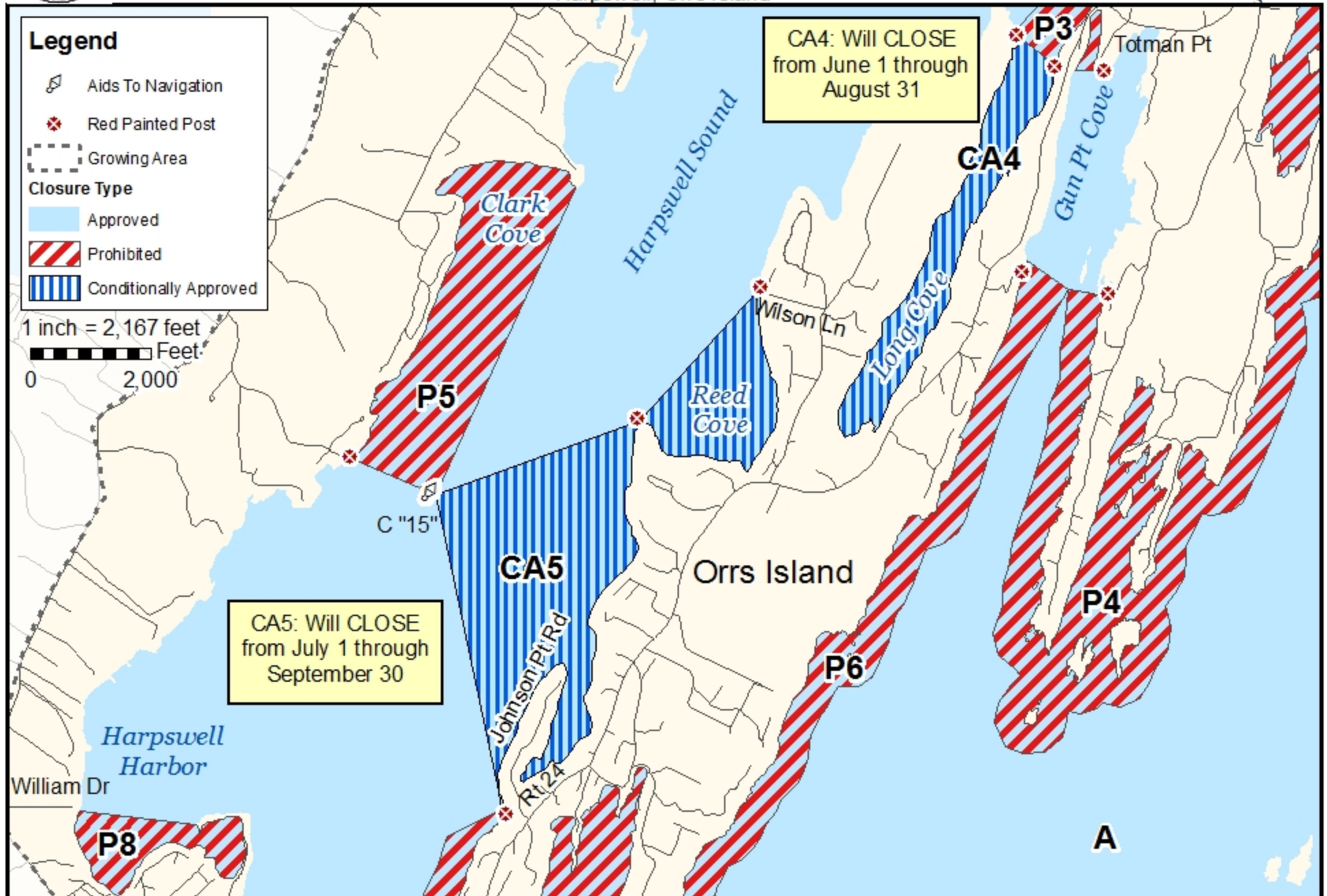


Maine Department of Marine Resources

Growing Area WK, Inset C

Harpswell, Orrs Island

June 3, 2021



This map is provided as a courtesy. Read the provided legal notice for closure details. Closures are not shown outside of the designated growing area. Maritime navigational aids are for reference only and are not suitable for maritime navigation.

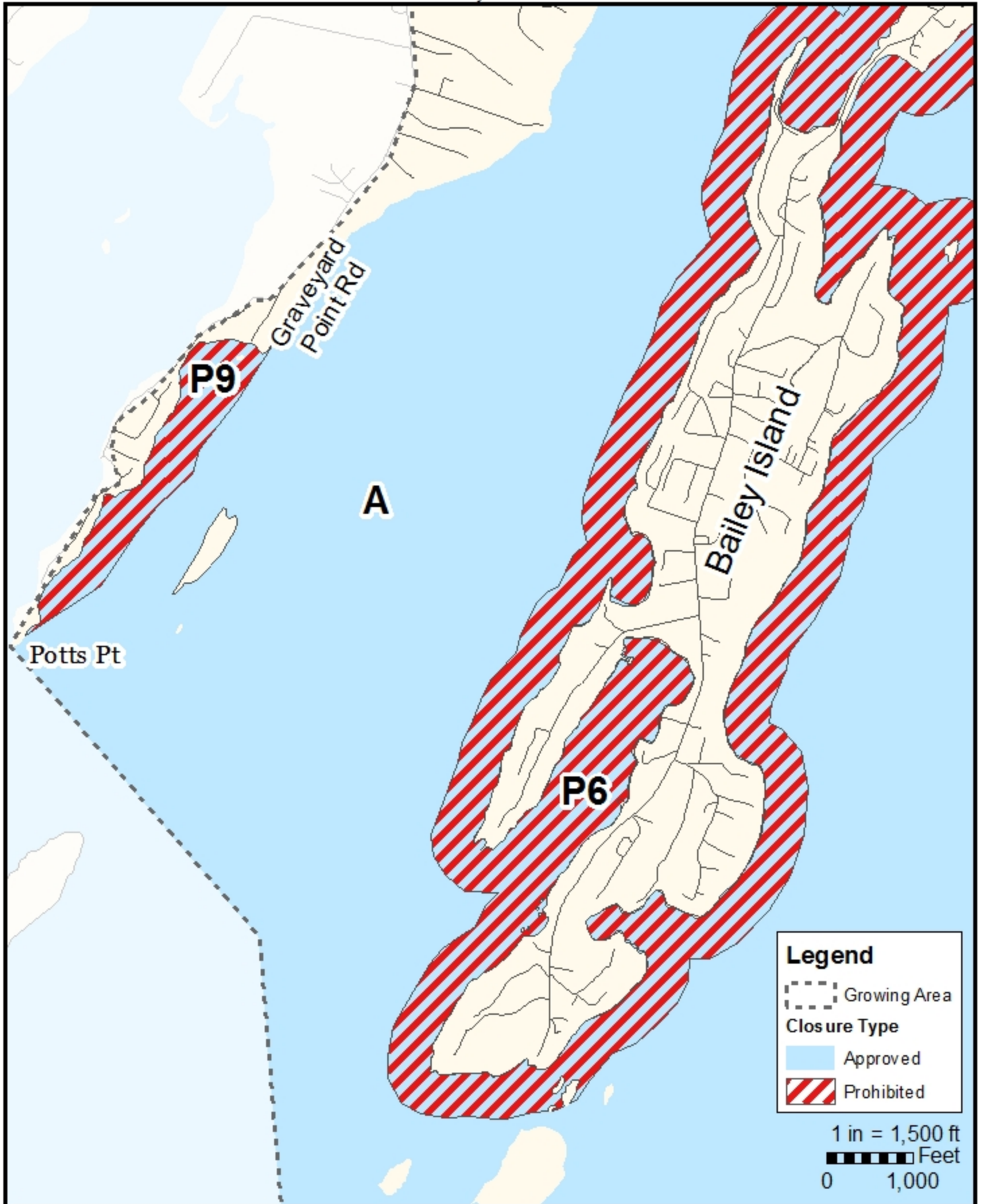


Maine Department of Marine Resources

Growing Area WK, Inset D

Bailey Island

June 3, 2021



This map is provided as a courtesy. Read the provided legal notice for closure details. Closures are not shown outside of the designated growing area. Maritime navigational aids are for reference only and are not suitable for maritime navigation.