

General Description

The proposed lease site, southwest of Googins Ledge, was visited a second time by MDMR staff on September 1, 2021 to conduct an underwater assessment within the proposed lease boundaries. The underwater assessment was performed via two drop camera transects (Figure 1). The bottom sediment consists of soft mud with tracks, holes, and burrows (Image 1). In the video footage, MDMR staff observed 2 crabs (*Cancer sp.*, Image 2), one horseshoe crab (*Limulus polyphemus*), and one additional organism that could not be identified from the footage obtained (likely either *Cancer sp.* or a lobster, *Homarus americanus*).

The location of lobster trap buoys within and near the proposed lease boundaries were also recorded during this site visit (Figure 1) and additional lobster buoys were observed in the general area.

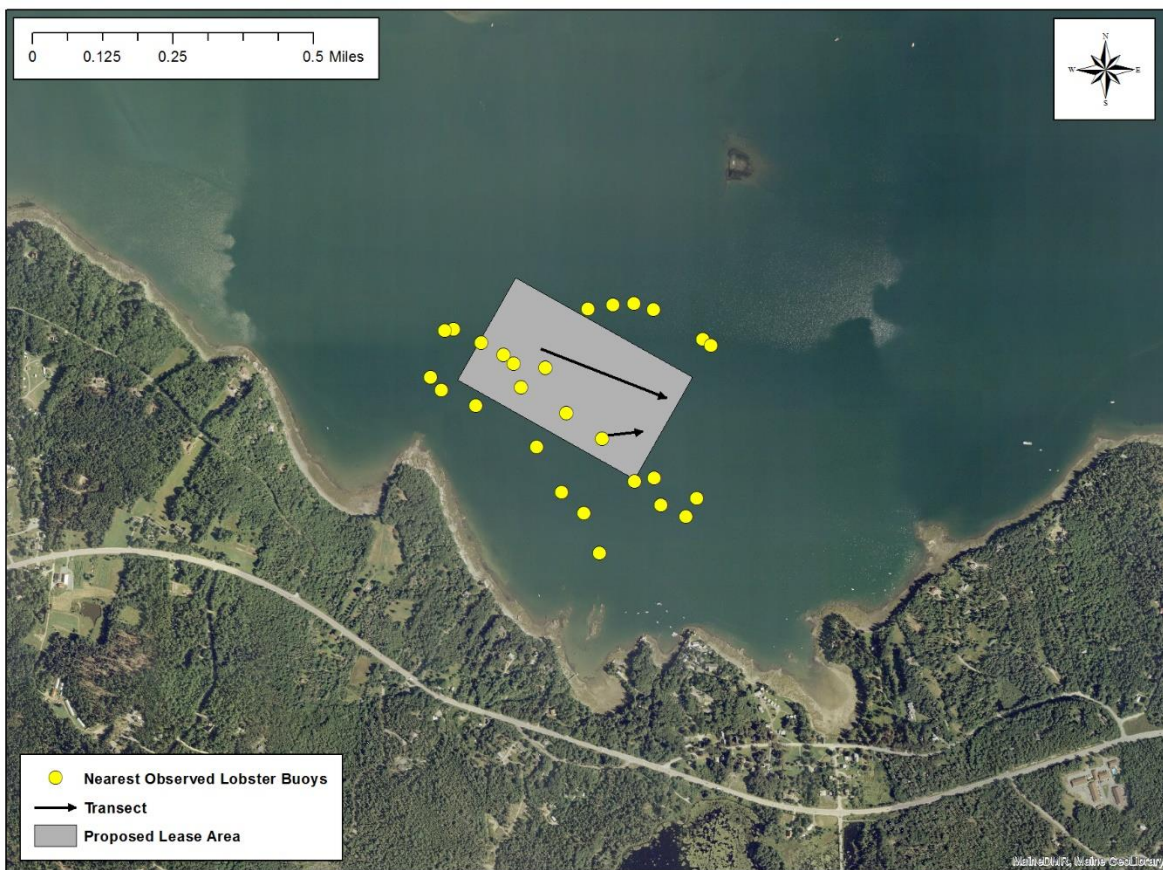


Figure 1: Proposed lease area, drop camera transects, and location of nearest observed lobster buoys (September 1, 2021).¹

¹ Figure created in ArcMap version 10.8 using geo-referenced aerial photographs provided by The Maine Office of GIS (orthoCoastalDownEast2008).



Image 1: Mud on the bottom of the proposed lease area (September 1, 2021).



Image 2: A crab (*Cancer sp.*) observed on the bottom of the proposed lease area (September 1, 2021).