

Aquaculture Web Map User Guide

Maine Department of Marine Resources

Purpose Statement

The aim of this guide is to provide details on how to use the Maine DMR Aquaculture Map. If you have questions or would like additional instructional sections, please email Flora.M.Drury@maine.gov.

Contents

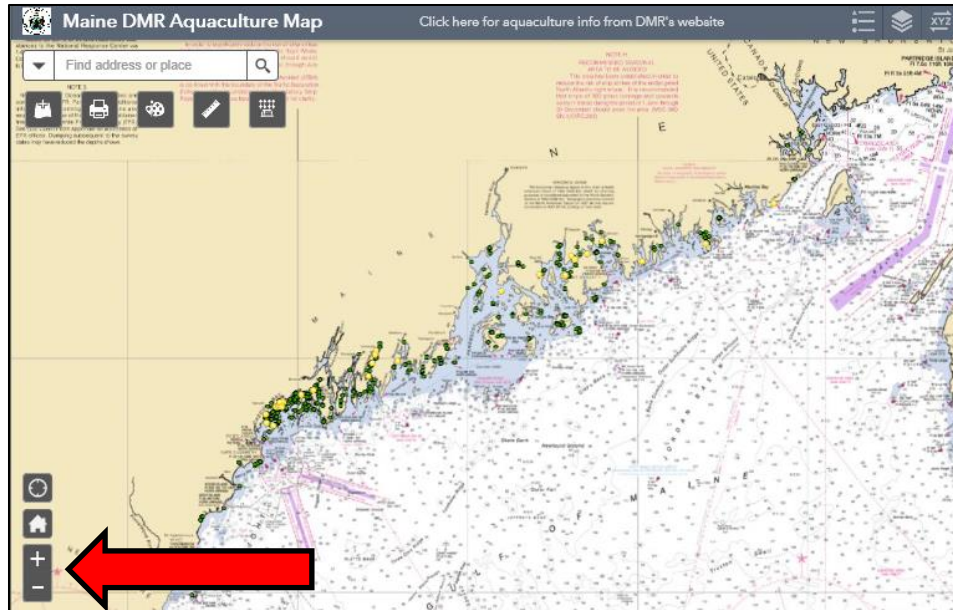
1. General Operation	1
2. Using the Layer List	2
3. Using the Legend.....	3
4. Using the Coordinate Conversion Tool	4
5. Using the Search Tool	4
6. Using the Add Data Tool	5
7. Using the Print Tool.....	6
8. Using the Draw Tool.....	7
9. Using the Measurement Tool	9
10. Using the GeoLookup Tool.....	11

1. General Operation

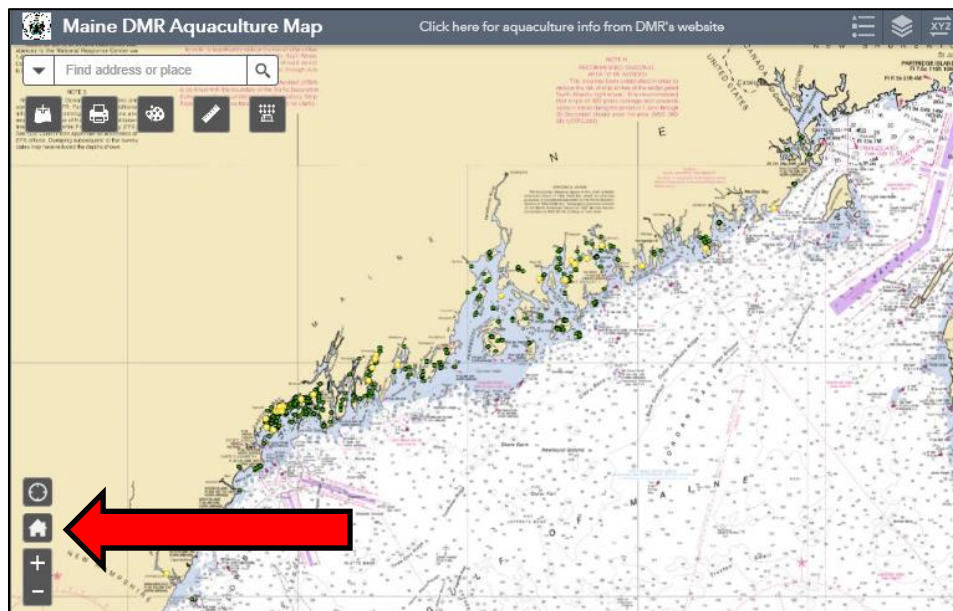
- I. Click on the map and drag your mouse to move around the map.



- II. Use this tool to zoom in and out on the map, or just double click to zoom in.



- I. Click this icon to reset the map to the original view.

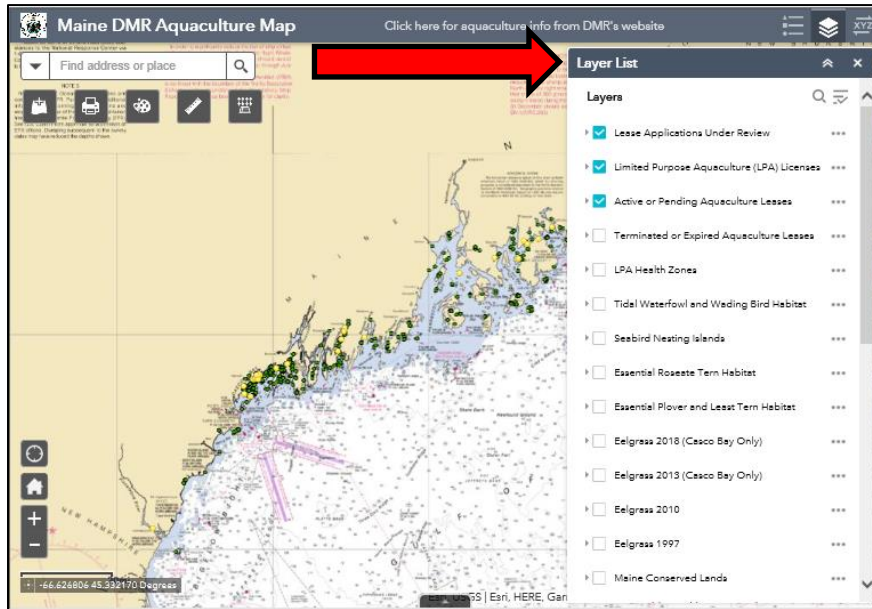


2. Using the Layer List




- I. When you click on this icon located in the upper right hand corner of the map, a box titled **"Layer List"** will appear. This box contains a list of layers (information) that can be added to, or removed from, the map.

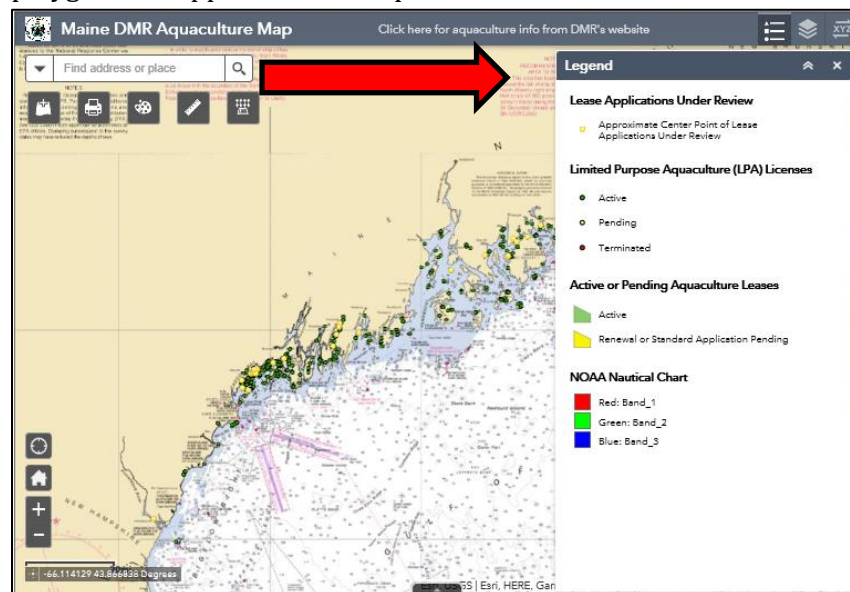
- II. Check the boxes associated with layers you wish to add to your map. Uncheck the boxes for layers you wish to remove from the map.



- III. Click for more information on each layer, including a **Description** and **Attribute Table**.

3. Using the Legend

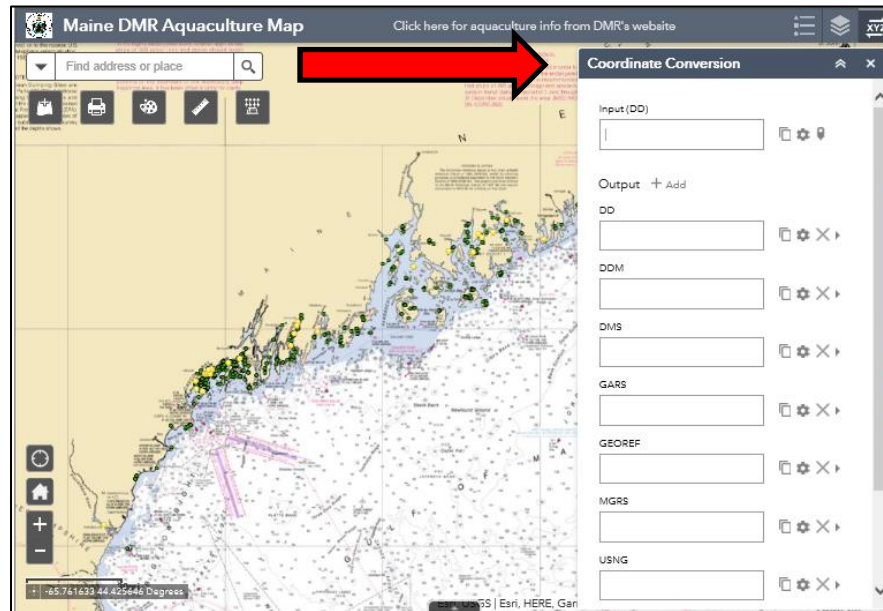
- I. When you click this icon  located in the upper right hand corner of the map, a box titled "**Legend**" will appear. This box displays the symbols associated with each point and polygon that appear on the map.



4. Using the Coordinate Conversion Tool

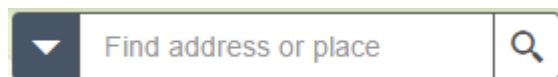


- I. When you click this icon located in the upper righthand corner of the map, a box titled “**Coordinate Conversion**” will appear. This box converts the coordinates you enter into other formats.



- I. Click the “Add Point” button  to collect coordinates from a location on the map.

5. Using the Search Tool

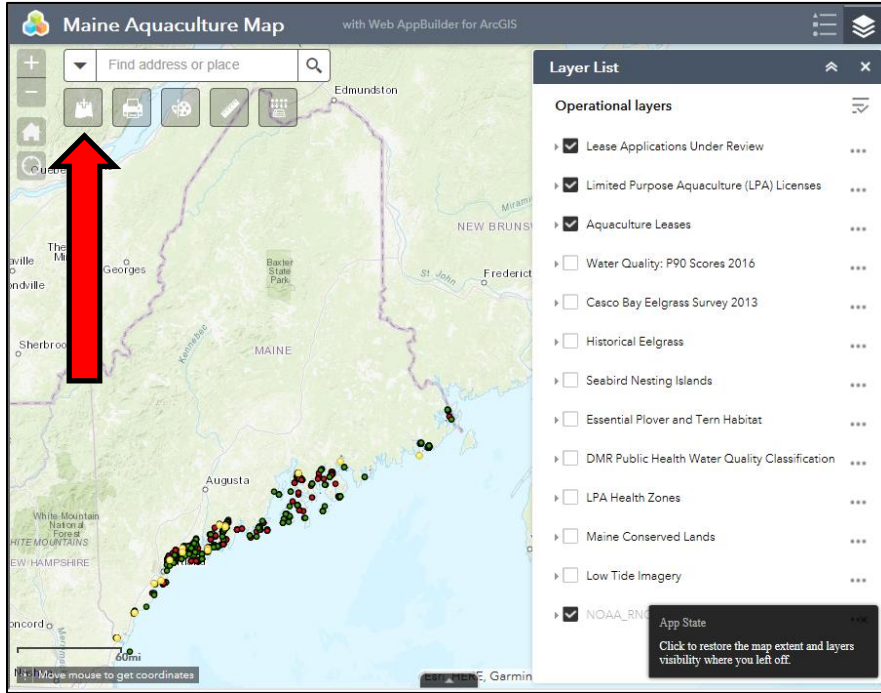


- I. The search bar allows you to enter a place-name or keyword and search for it. Aquaculture leases and licenses can be searched for using this tool.
- II. A pop-up appears at the location of the place-name or the feature that has been searched for. This pop-up displays any available attribute information for the location or lease/license you have searched for.

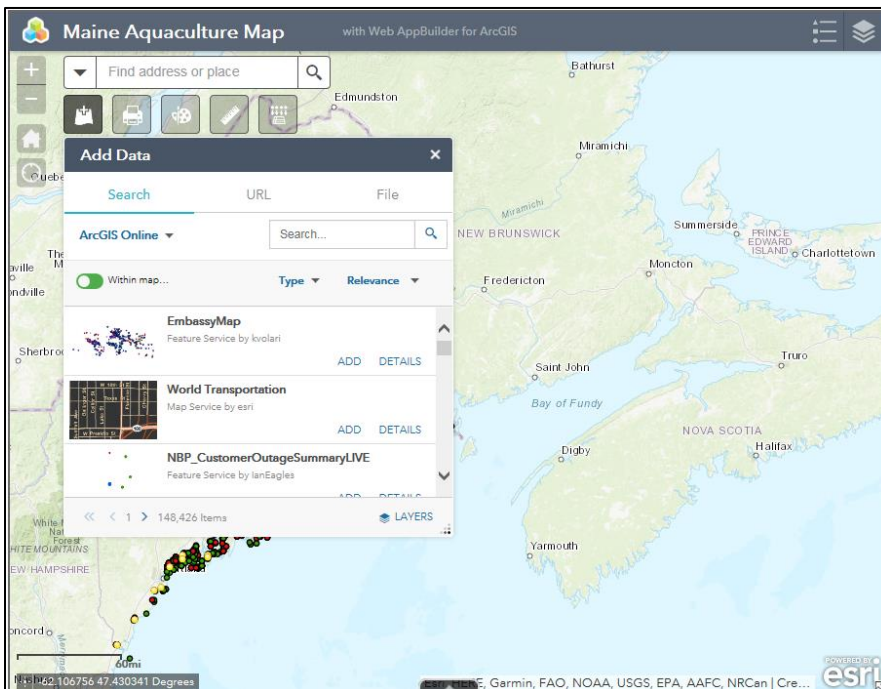
6. Using the Add Data Tool



- I. The add data tool allows you to add layers to the map from ArcGIS Online, a URL, or from file.




- II. When you click on the print tool, the following box will appear.

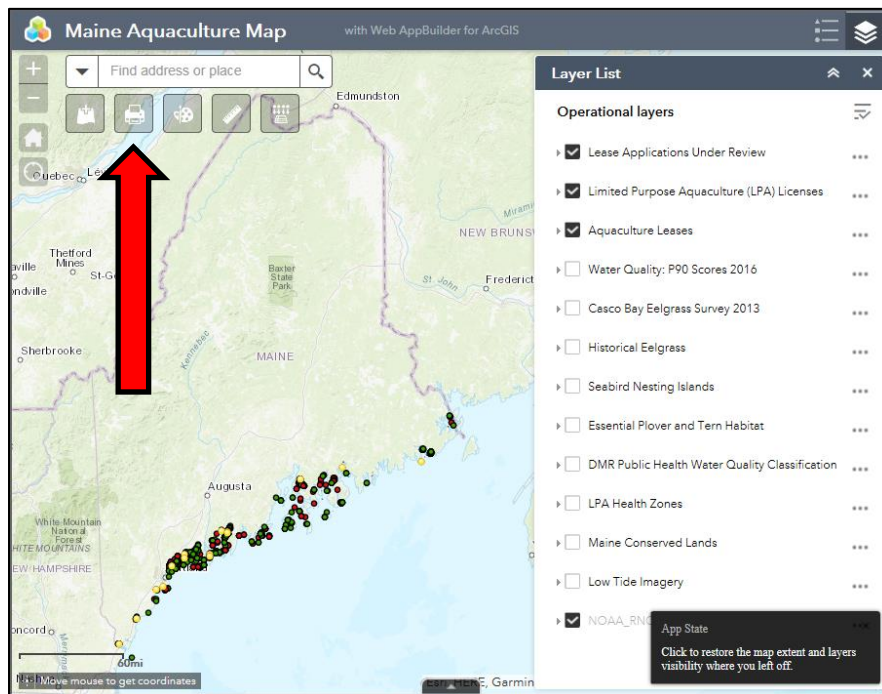


- III. Under **Search** tab, type the description of the data you want. Click **ADD** on a specific item to add it to the map. The added layer will show in the **Layer List** as well. Click **REMOVE** to remove the layer from the map and Layer List.
 - a. You can also click **DETAILS** to get information for the layer.
- IV. To add layers by URLs, click the **URL** tab next to the **Search** tab. Choose a type and enter the URL.
- V. To add layers from file, click on the **File** tab and browse for the files or drag and drop them onto the tool.

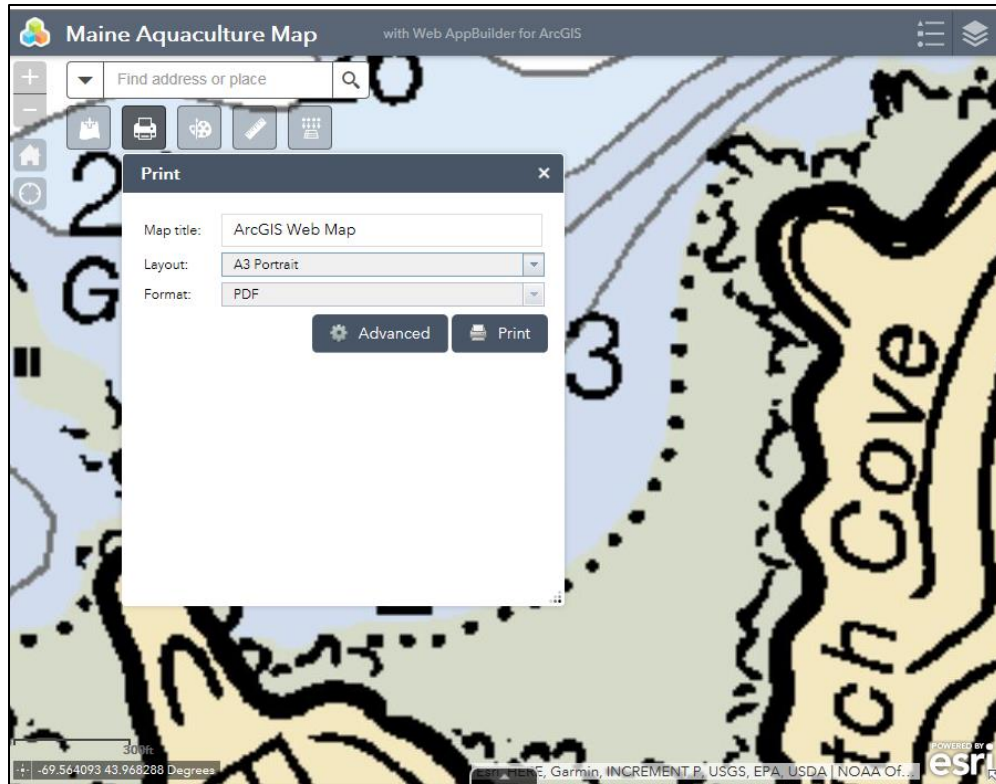
7. Using the Print Tool



- I. The print tool  allows you to export the map in a variety of formats (including PDF) and/or print the map.




- II. When you click on the print tool, the following box will appear.

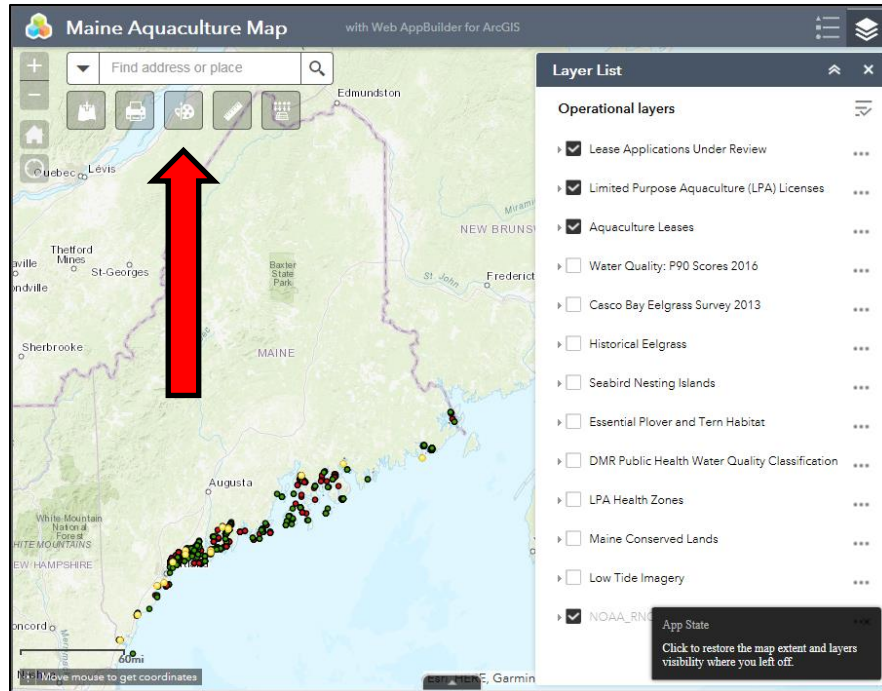


- III. Select the **Layout** and **Format** that you would like for the exported map. If you pick a layout other than **MAP_ONLY** you will be able to create a title for your map. **NOTE:** The **MAP_ONLY** format prints only the map and will not print the layers you have added to the map.
- IV. Click **Advanced** to open a menu with advanced print options.
- V. After all options have been set with the applicable values, click **Print** to submit all information to the print service. A progress bar displays next to the executing task.

8. Using the Draw Tool

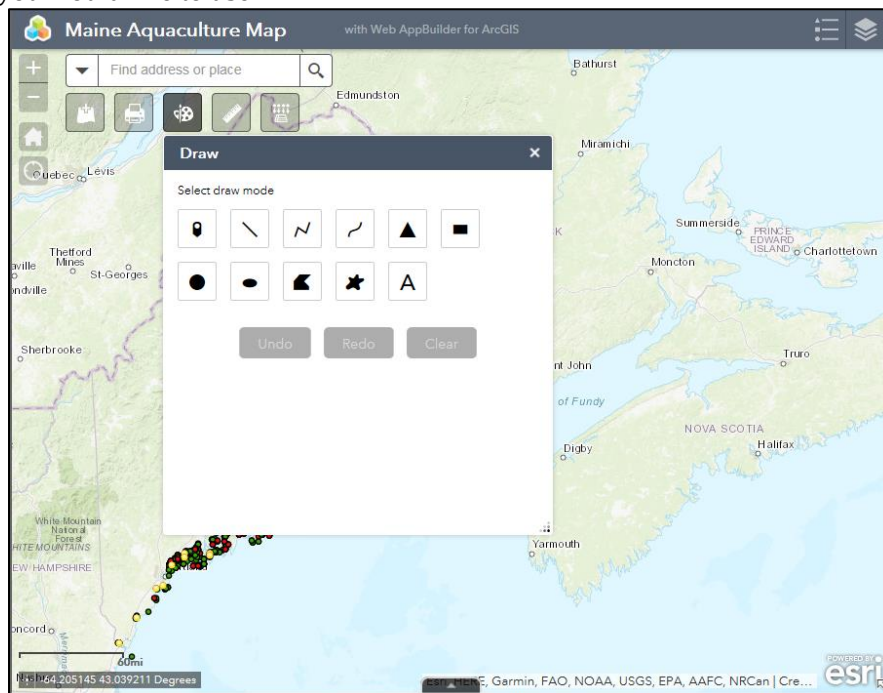


- I. The draw tool  allows you to draw points, lines, or polygons on the map.



a.

II. When you click on the draw tool, the following box will appear. To begin, click on the draw mode you would like to use.



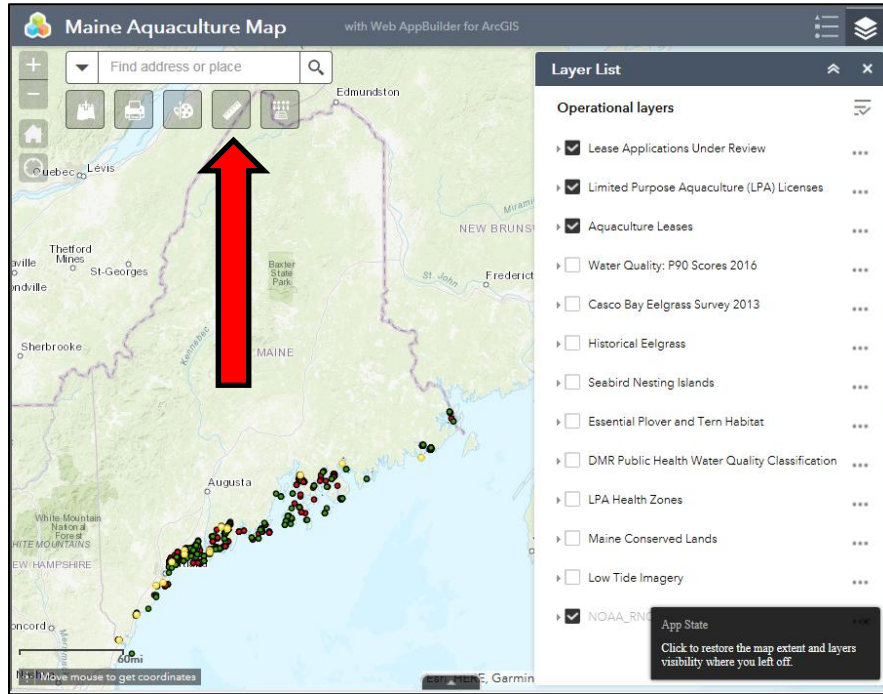
III. For some draw modes, you can click **Show Measurements** and select **Area Units** and **Distance Units** to display measurements.

IV. Click **Undo** or **Redo** to undo or redo the drawing features. Click **Clear** to remove all of them.

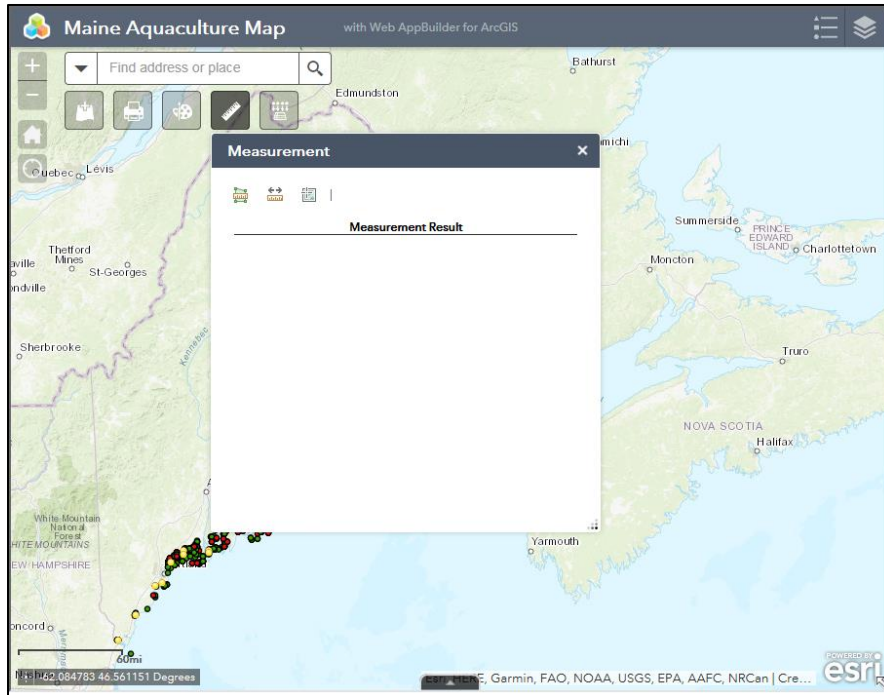
9. Using the Measurement Tool





- I. The measurement tool allows the user to measure distance, area, and coordinates on the map.




- II. When you click on the measurement tool, the following box will appear. To begin, click on the measurement tool you would like to use.



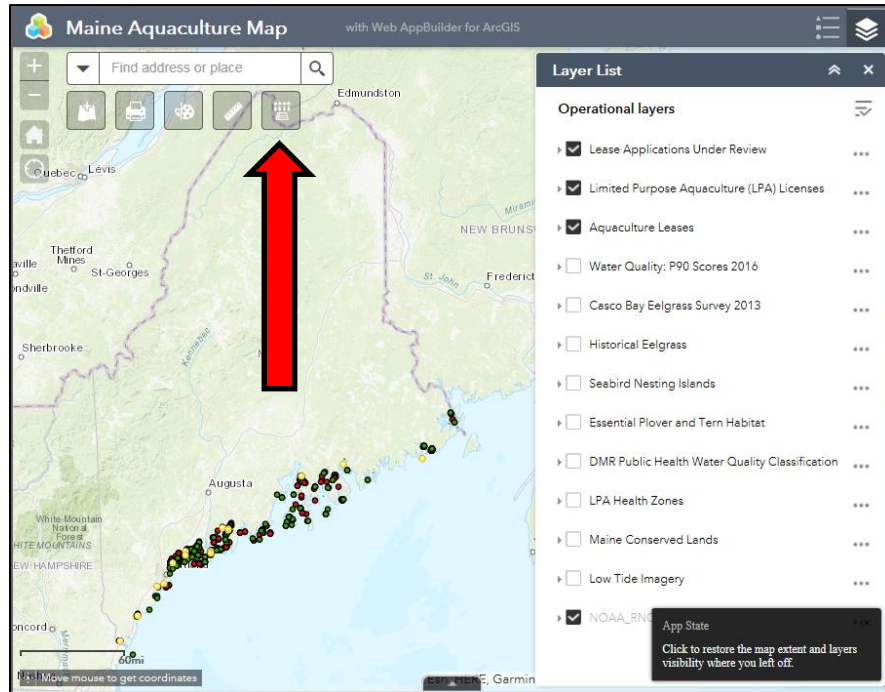
- a.  The area measurement tool allows you to measure the area of a polygon. To do this, select the units you wish to measure in the drop-down menu. Then, draw a polygon on the map by clicking three or more points. Double-click to finish drawing the polygon and the measurement will appear.

- b.  The distance measurement tool allows you to measure a line. To do this, select the units you wish to measure in the drop-down menu. Then, draw a line on the map by clicking two or more points. Double-click to finish drawing the polyline and the measurement will appear.

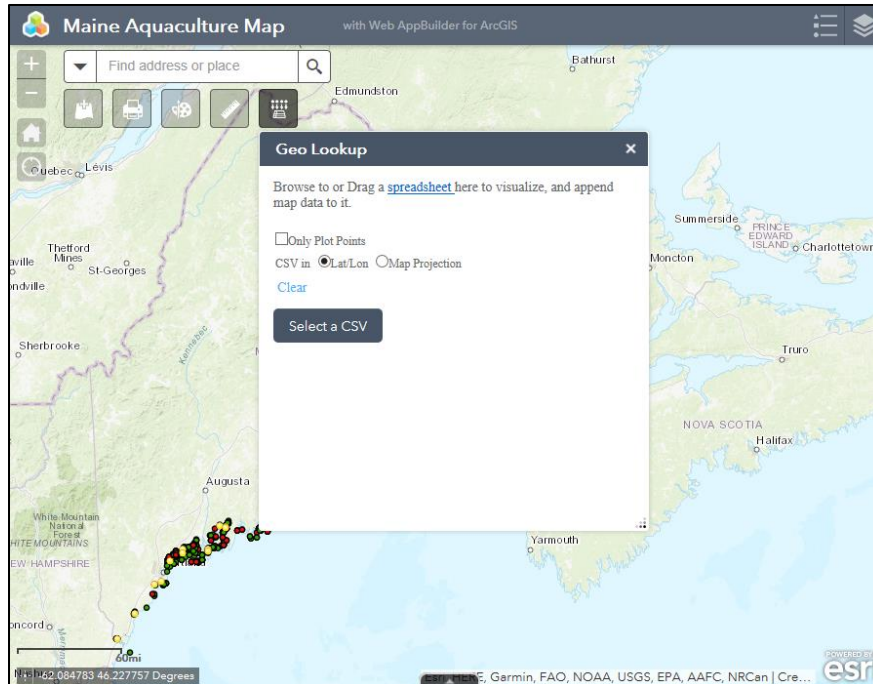
- c.  The location measurement tool allows you to determine the coordinates of a specific location. To do this, select the format you want the coordinates to be generated in in the drop-down menu. Then, click a location on the map and the coordinates for this location will appear. **NOTE:** coordinates will appear for the location clicked on AND the location of the user's cursor.

10. Using the GeoLookup Tool

- I. The GeoLookup tool  allows the user to add points to the map.



- II. When you click on the print tool, the following box will appear. To begin, click on the **Select a CSV** button.



- III. Browse to your CSV file and select it or drag and drop a CSV on the tool. Select the file and click **Open** in File Explorer.
 - a. NOTE: You can create CSV files from spreadsheet applications such as Microsoft Excel, Google Sheets, and Apple Numbers.
 - b. NOTE: Coordinates in your CSV must be formatted in Degrees Decimal (ex: -69.12345) and should be set up as follows:

	A	B	C	D
1	CORNER	Lat	Long	
2	A	43.817351	-69.746827	
3	B	43.817289	-69.745776	
4	C	43.815555	-69.746227	
5	D	43.815574	-69.747385	
6				
7				
8				
9				
10				
11				
12				
13				
14				
15				
16				
17				
18				
19				
20				
21				

IV. Click the **Clear** button to remove the csv.