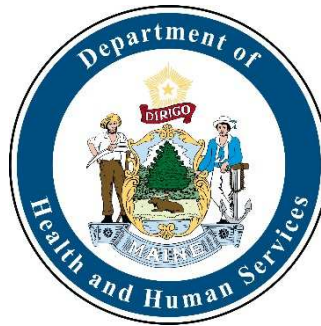


MaineMOM

Model of Care for Perinatal Patients with Opioid Use Disorder

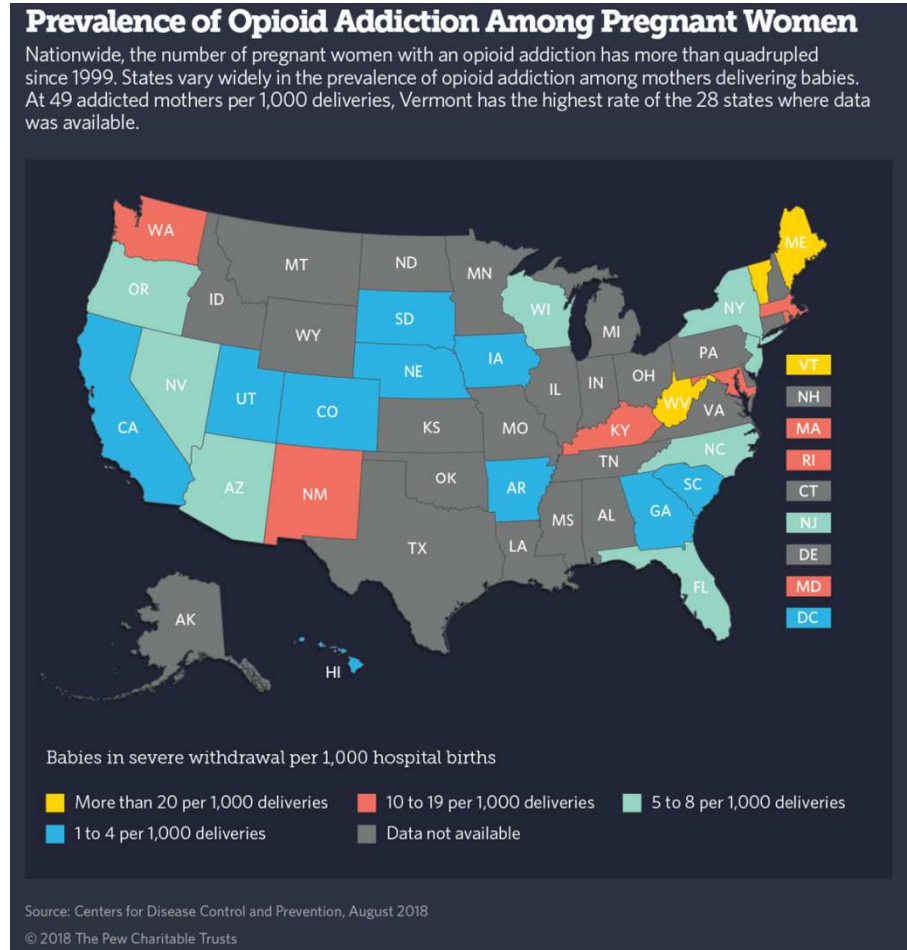
November 3, 2020

Liz Remillard, MaineMOM Program Manager
Office of MaineCare Services



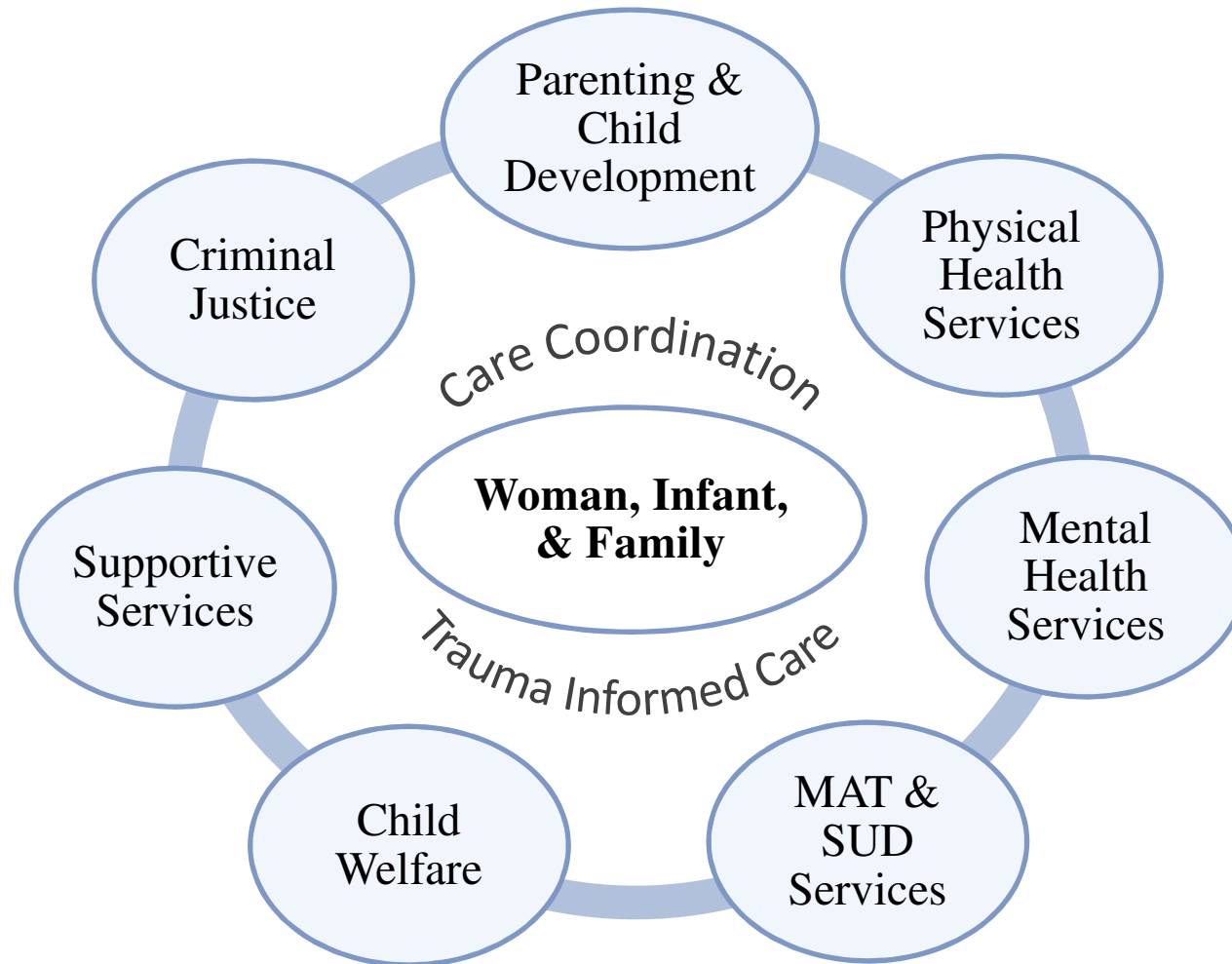
Why Maine?

- Maine is one of the states hardest hit by the opioid epidemic, averaging almost one opioid related death per day over 2017 and 2018¹
- In 2019, 7% of Maine's births were substance exposed²



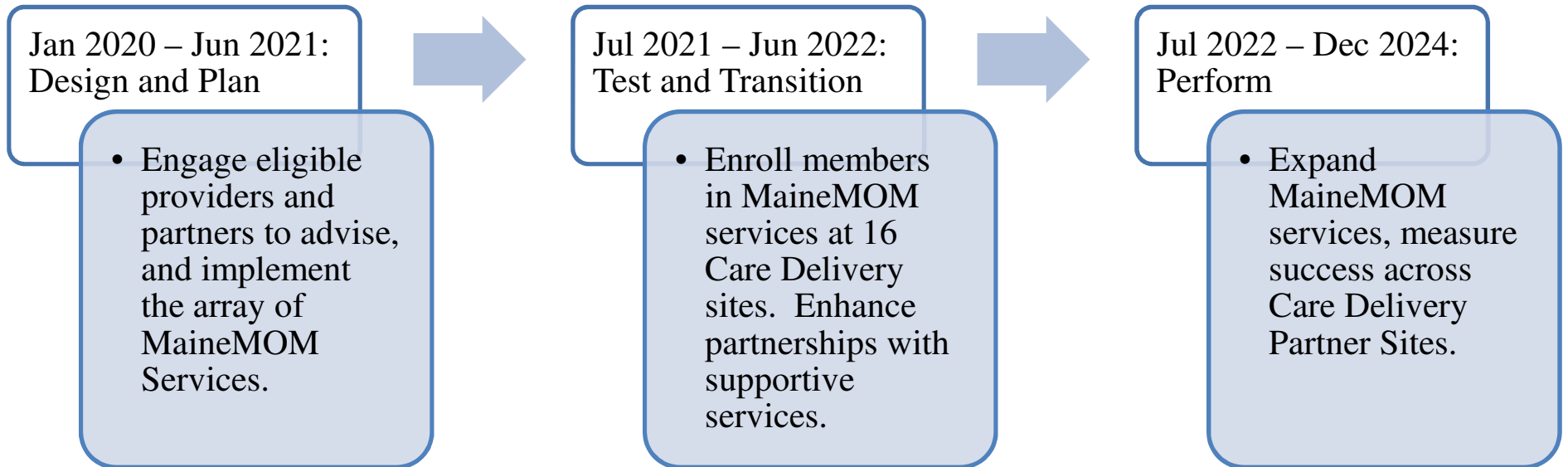
1. <https://www.drugabuse.gov/drug-topics/opioids/opioid-summaries-by-state/maine-opioid-involved-deaths-related-harms>
2. Office of Child and Family Services, Maine DHHS. (2020) Drug Affected Baby/Substance Exposed Newborn Referrals Calendar Year 2019 Summary.

Family-Centered Treatment Framework



MaineMOM Overview

- Five year funded initiative with Center Medicare and Medicaid Innovation (CMMI) from January 2020 - December 2024
- Design a MaineCare care-delivery system for pregnant and post-partum members with OUD with the aim to increase care integration, improve outcomes, and reduce costs



MaineMOM Care Delivery Partners

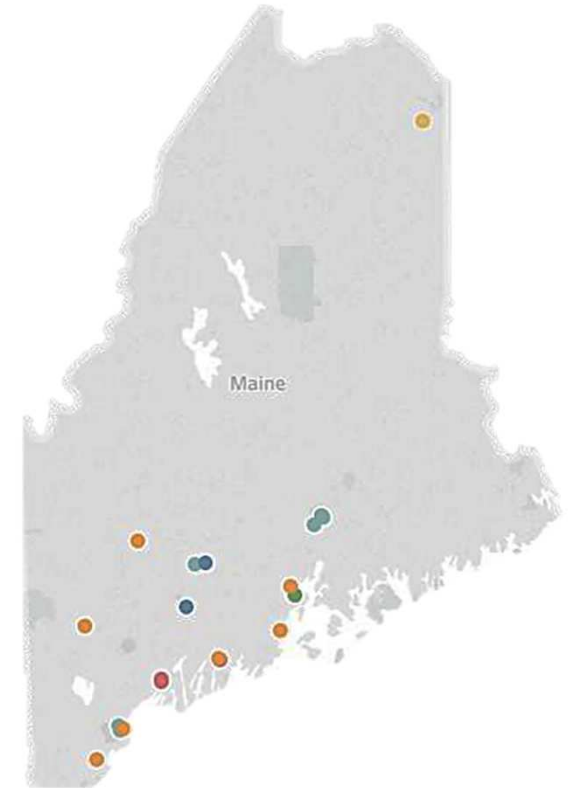
Implement MaineMOM Services by July 1, 2021:

- MaineGeneral Medical Center
- MaineHealth
- Mid Coast-Parkview Health
- Northern Light Health
- Penobscot Community Health Care
- Pines Health Services



Health Home Services

1. Health Promotion
2. Comprehensive Case Management
3. Comprehensive Transition to Care
4. Individual and Family Support
5. Referral to Community and Social Support



MaineMOM Key Services



Group Counseling and Peer Support Services



Medication Assisted Treatment



Screening for health-related social needs



Connections to WIC, Home Visiting, Public Health Nursing, and other supportive services



Supportive conversations about family planning and contraceptive care

Labor and Delivery

MaineMOM providers will partner with birthing hospitals that...

- Follow **Eat, Sleep, Console** approach, focusing on nonpharmacologic care and increasing family involvement in the care of their infant
- Use **evidence-based pain management protocols** sensitive to the unique needs of women living with OUD

MaineMOM Educational Support

- Focus on clinical education through:
 - Clinical office hours for collaboration and consultation
 - MaineMOM Statewide ECHO
 - A virtual learning structure
 - Utilize expert faculty to provide focused case consultation and support for implementation of quality care practices



CradleME Referral System



CradleME

A Referral System
for All Birthing Families
in Maine

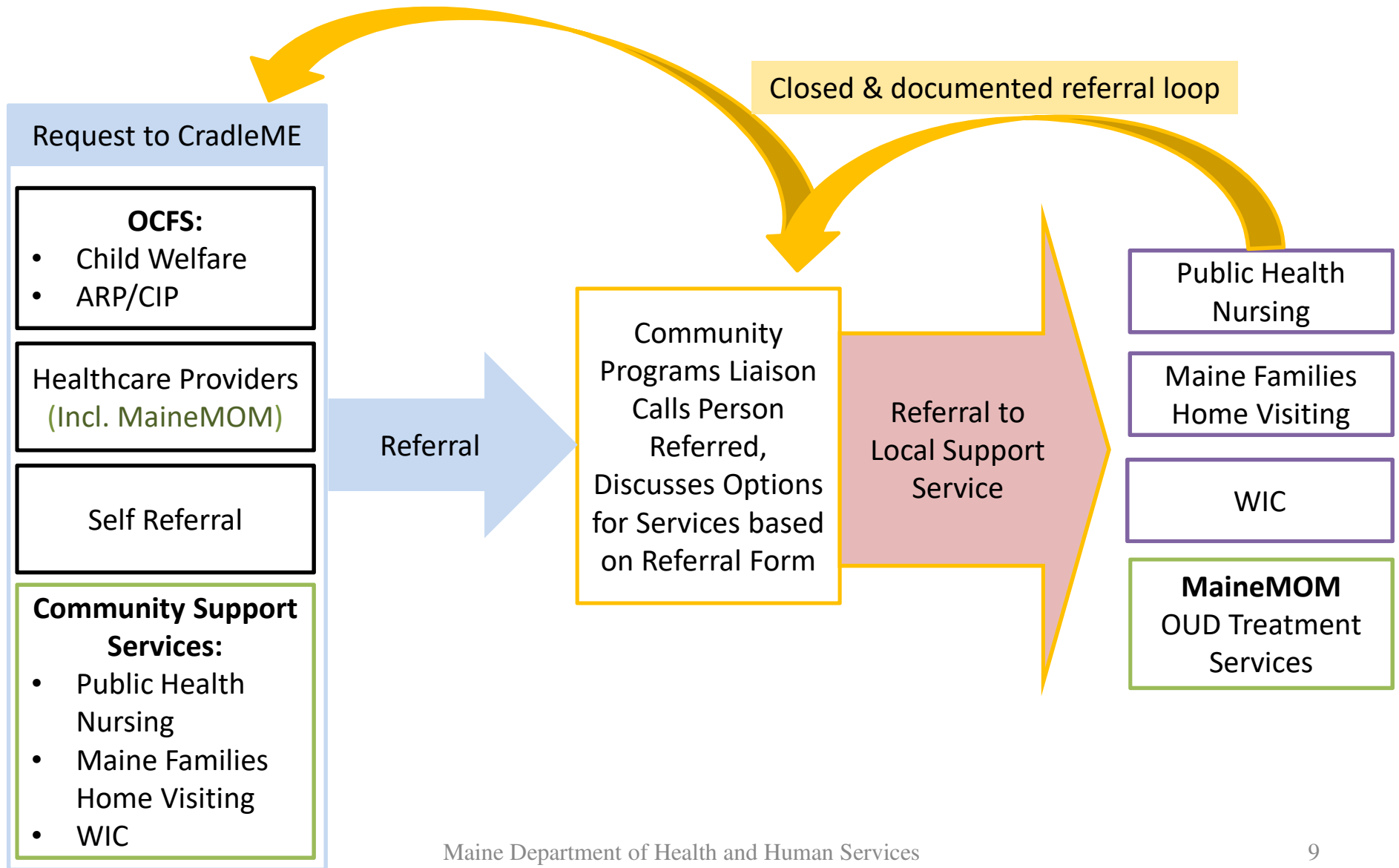
Call: 1-888-644-1130

Fax: 207-287-4577

If you are pregnant or have a new baby, CradleME services are available for free. CradleME helps connect you with the right home-based services for you and your baby. CradleME is a partnership between two programs: Public Health Nursing and Maine Families.

<http://cradleme.org/>

Connecting to Key Services



MaineMOM Timeline

- January 2020 – June 2021 (Year 1): Plan and Design Services
 - Implement advisory structure to garner input and feedback from healthcare providers, community programs, and women in recovery
 - Launch educational support and public outreach and awareness campaign
- July 2021 – June 2022 (Year 2): Test and Implement MaineCare Policy
 - Implement MaineMOM Services with six partner organizations to test and improve services
 - Incorporate MaineMOM services into the MaineCare Benefits Manual
- July 2022 – June 2023 (Year 3): Expand Services
 - Open expansion to other healthcare sites to deliver MaineMOM services
- July 2023 – December 2024 (Year 4 & 5): Evaluate Outcomes and Improve Services

Year 1 – Planning and Implementation

- Advisory meetings with clinicians, community service partners, women in recovery and affected others
- Collaboration with community support services, maternal health and opioid treatment services, including inpatient and emergency departments
- Launch outreach and marketing campaign to bring awareness to accessing MaineMOM services with an emphasis on bringing awareness to and reducing stigma of substance use during pregnancy
- Launch MOM ECHO for clinicians and community providers
- Enhance CradleME Referral System: Hire additional staff to provide warm handoff to MaineMOM providers.
- Services begin July 2021

MaineMOM Contacts

Program Manager

Liz Remillard, MPH, Liz.remillard@maine.gov

Program Coordinator

Rachel McLean, Rachel.mclean@maine.gov

Clinical Advisor

Alane O'Connor, DNP, Alane.oconnor@maine.gov

MaineMOM Webpage

<https://www.maine.gov/dhhs/oms/about-us/projects-initiatives/maine-maternal-opioid-model>

This program is managed by the Office of MaineCare Services Value-Based Purchasing Unit and funded by the Centers for Medicare and Medicaid Services (CMS) of the U.S. Department of Health and Human Services (HHS).

