

Foundational Public Health Services

Statewide Coordinating Council for Public Health Meeting
December 18, 2025

Paula Thompson
Public Health Liaison
Central District

Stacy Boucher
Public Health Liaison
Aroostook District

Alfred May
Public Health Liaison
Downeast District



Objectives

- Foundational Public Health Services
 - Introduce the framework.
 - How the SCC could use it.

Governmental Public Health

Ready to Serve their Communities

- ❖ What a public health department does
- ❖ How a public health department works
- ❖ How a public health department show success

Essential Public Health Services

1. Assess and monitor population health status.
2. Investigate, diagnose, and address health problems and hazards.
3. Communicate effectively to educate people about health.
4. Strengthen and mobilize communities and partnerships.
5. Create, champion, and implement policies, plans, and laws.
6. Utilize legal actions to protect the public's health.
7. Assure effective system that enables equitable access.
8. Build skilled public health workforce.
9. Initiate evaluation, research, and quality improvement.
10. Build strong organizational infrastructure.

Foundational Public Health Services

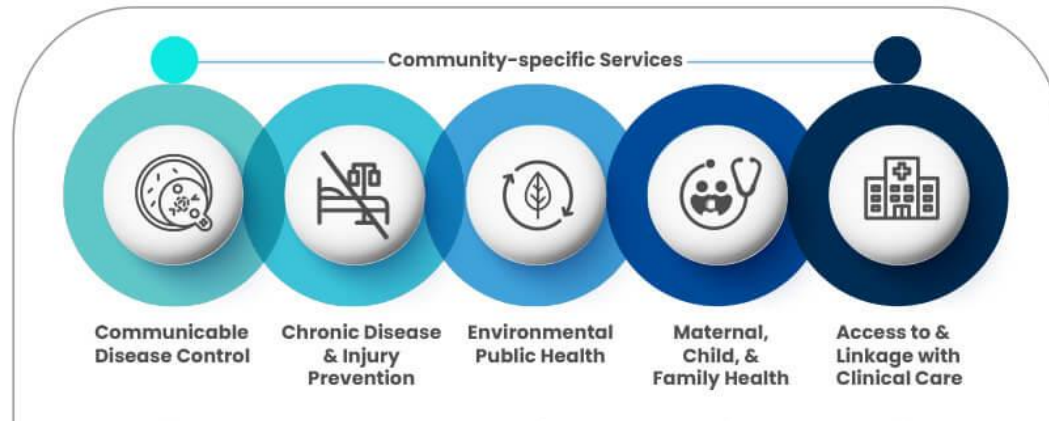
‘the minimum package of public health services that governmental public health should deliver to communities’

Institute of Medicine (2012) ‘For the Public’s Health: Investing in a Healthier Future’

Foundational Areas

Foundational Public Health Services

Foundational
Areas



EQUITY

Foundational Areas and Capabilities

Foundational Public Health Services

Foundational Areas



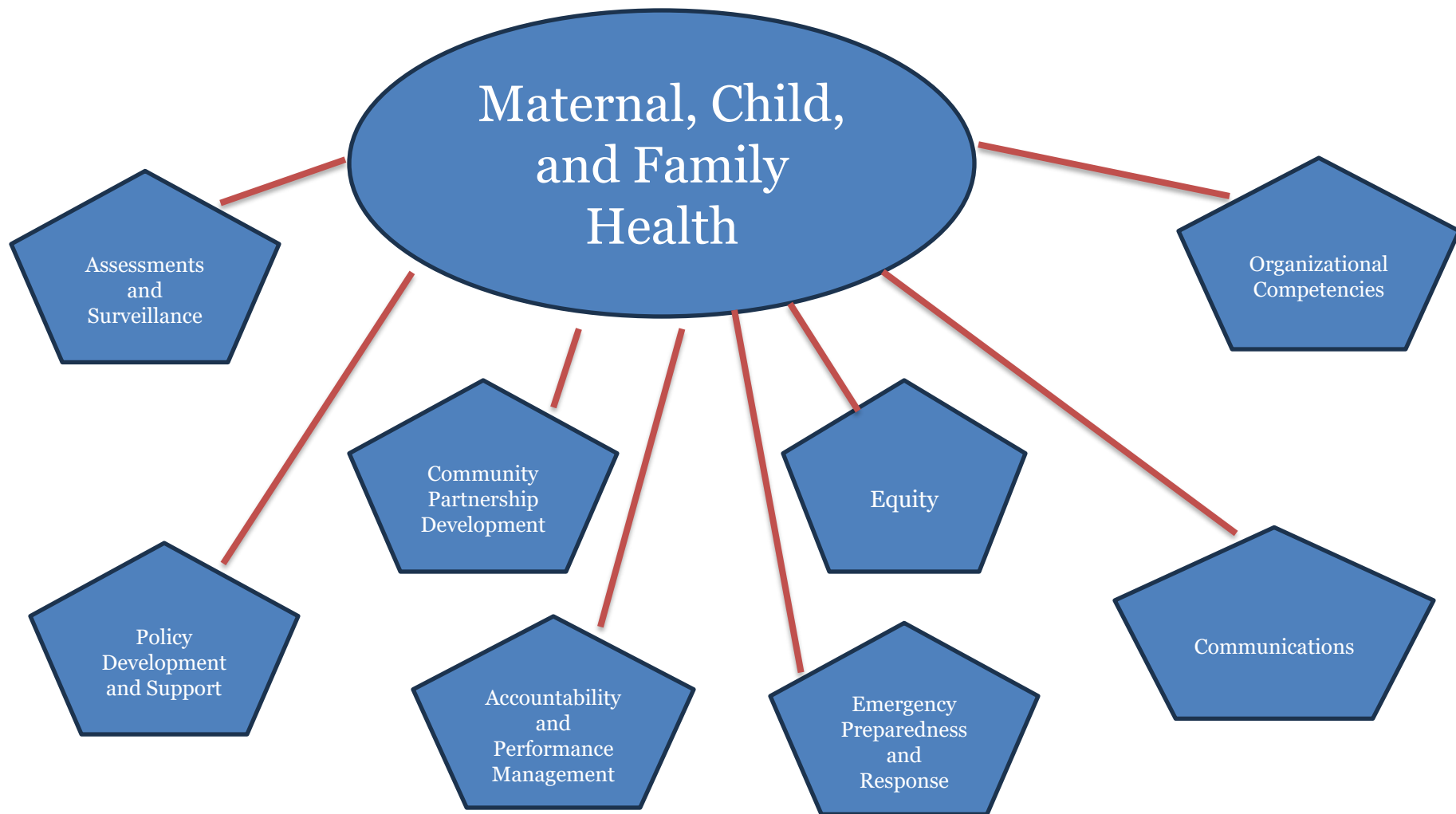
Foundational Areas

- **Communicable Disease Control** includes finding and responding to cases of infectious diseases.
- **Chronic Disease and Injury Prevention** is about helping people live longer, healthier lives by preventing conditions and reducing injuries.
- **Environmental Public Health (EPH)** is about making sure our surroundings are safe and healthy. EPH checks the air we breathe, the water we drink, and the places we live and eat to make sure they meet safety standards.

Foundational Areas

- **Maternal, Child, and Family Health** includes core public health services that support healthy pregnancies, safe births, and strong starts for children.
- **Access to and Linkage with Clinical Health** includes making sure people know how to access services, supporting health coverage enrollment, and working with local providers to improve care coordination.

Linking Capabilities to each Area



Capabilities: Group One

Public health emergency preparedness

- Ready to respond to disasters, disease outbreaks, and other emergencies.
- Work with partners through planning and assure essential services can continue.
- Focus on protecting people most at risk, keeping the public informed, and helping communities stay safe before, during, and after a crisis.

Capabilities: Group Two

Community Partnership Development

- Brings people and organizations together to tackle health challenges and create better opportunities for everyone.
- Provide service and resource sharing through collaboration.
- Reduce costs, strengthen partnerships, and ensure that essential services reach the communities that need them most.

Capabilities: Group Three

Assessment and Surveillance

- Gather and study information to understand a community's health and what affects it.
- Identify emerging health trends, risks, and problems so public health can take action.
- Improve population health: collect, access, analyze, interpret, and use data.

Group Exercise

Area: Maternal, Child and Family Health

- Based on your Group Capability, use these questions for a discussion:
 - What infrastructure is needed for your capability to support this area?
 - What are existing policies, actions, and activities that support the link between your capability and this area?
 - What are the gaps in geography and resources?

Thank You

Stacy Boucher
Public Health Liaison
Aroostook District
stacy.boucher@maine.gov

Paula Thompson
Public Health Liaison
Central District
paula.thompson@maine.gov

Alfred May
Public Health Liaison
Downeast District
alfred.may@maine.gov

