

Foundational Public Health Services

Statewide Coordinating Council for Public Health Meeting
March 19, 2026

Alfred May
Public Health Liaison
Downeast District



December Meeting

- Foundational Public Health Services
 - Introduce the framework
 - Breakouts: Introduce Members
 - Foundational Area: Maternal and Child Health
 - Foundational Capabilities
 - Public Health Emergency Preparedness
 - Community Partnership Development
 - Assessment and Surveillance

Foundational Public Health Services

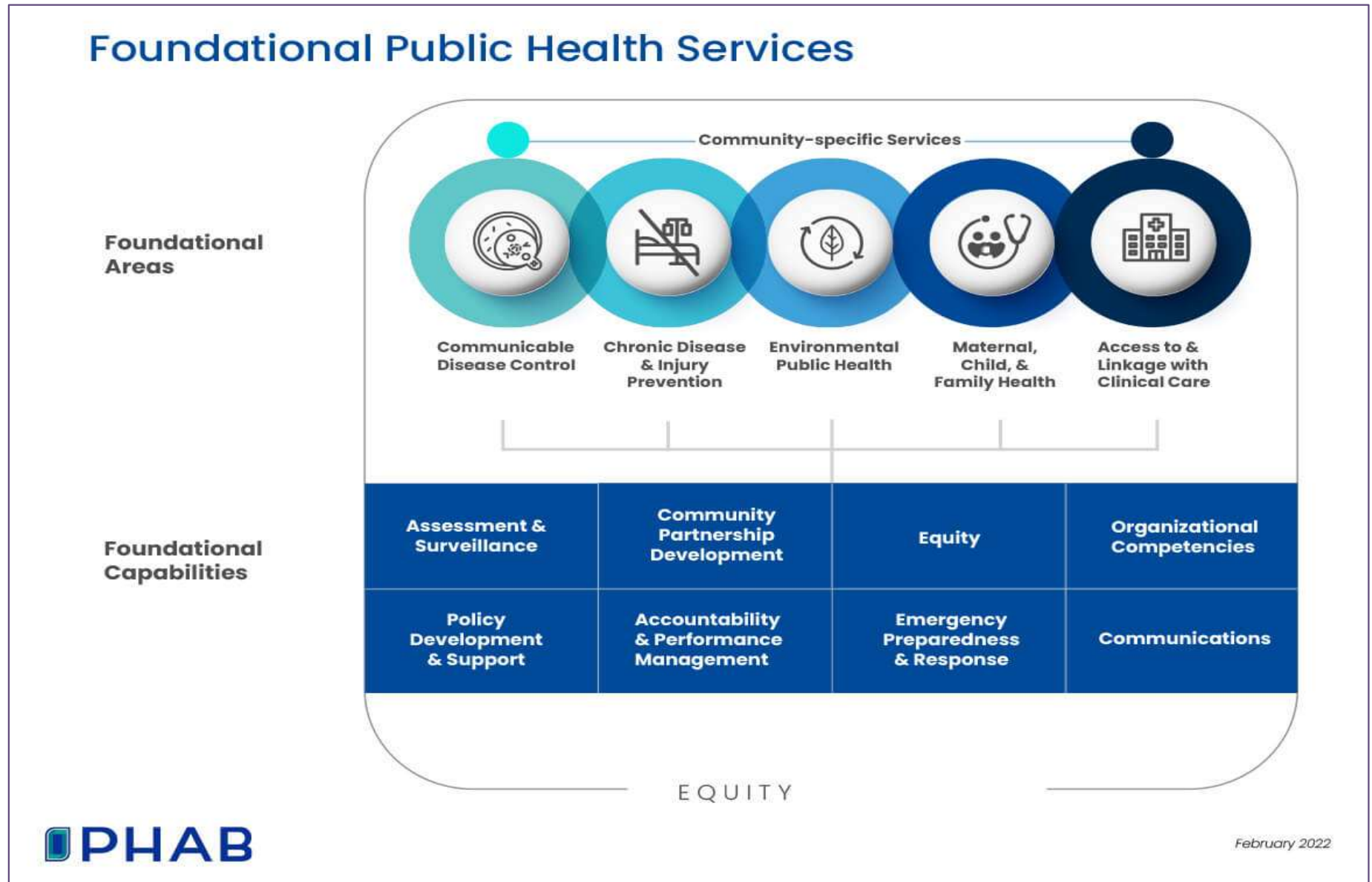
‘the minimum package of public health services that governmental public health should deliver to communities’

Institute of Medicine (2012) ‘For the Public’s Health: Investing in a Healthier Future’

Governmental Public Health

- ✓ Health departments have a fundamental responsibility to provide public health protections and services.
- ✓ Foundational Public Health Services framework
 - Outlines the unique responsibilities of governmental public health and
 - Defines a minimum set of Foundational Capabilities and Foundational Areas that must be available in every community.
- ✓ Standards of Practice for Health Department Accreditation

Foundational Areas and Capabilities



Importance of Framework

Governmental public health has a vital role in thriving and healthy communities.

- Identifies gaps in capacity.
- Requires support from partners and communities.
- Evaluates progress toward goals.
- Justifies resource and funding needs.

- If health department is asked to do more services, the framework provides justification to receive more capacity and resources to do it, not just add more hats to existing professional staff.

- Framework does not:
 - Convey roles and responsibilities.
 - Determine how much of each activity, capability, or area a jurisdiction owns.

Foundational Areas

- Basic public health, topic-specific programs and services aimed at improving the health of the community.
- *AKA Public Health Programs*

Communicable Disease Control	Environmental Public Health	Chronic Disease and Injury Prevention
Maternal, Child, and Family Health		Access to and Linkage with Care

Foundational Capabilities

- Cross-cutting skills and capacities needed to support basic public health protections, programs, and activities.

Assessment & Surveillance	Equity
Community Partnership Development	Policy Development and Support
Organizational Competencies	Accountability & Performance Management
Emergency Preparedness and Response	Communications

Emergency Preparedness and Response

- Ability to develop, exercise, and maintain preparedness and response strategies and plans.
- Ability to integrate social determinants of health, and actions to address inequities, including ensuring the protection of high-risk populations, into all plans, programs, and services.
- Ability to lead the Emergency Support Function 8 — Public Health & Medical.
- Ability to activate the emergency response personnel and communications systems in the event of a public health crisis; ; and operate within, and as necessary lead, the incident management system.

Emergency Preparedness and Response

- Ability to maintain and execute a continuity of operations plan.
- Ability to establish and promote basic, ongoing community readiness, resilience, and preparedness by enabling the public to take necessary action before, during, or after a disaster, emergency, or public health event.
- Ability to issue and enforce emergency health orders.
- Ability to be notified of and respond to events on a 24/7 basis.
- Ability to access and utilize a Laboratory Response Network (LRN) Reference laboratory for biological agents and an LRN chemical laboratory at a level designated by US CDC.

Thank You

Alfred May
Public Health Liaison
Downeast District
alfred.may@maine.gov

