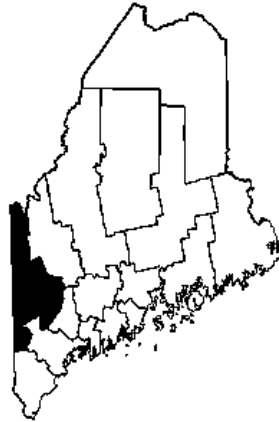


MAINE'S STRATEGIC PREVENTION FRAMEWORK STATE INCENTIVE GRANT

SUBSTANCE CONSUMPTION AND CONSEQUENCES

COUNTY PROFILE SUPPLEMENT: OXFORD



**PREPARED FOR:
MAINE OFFICE OF SUBSTANCE ABUSE**

**BY:
HORNBY ZELLER ASSOCIATES, INC.**

REVISED SEPTEMBER 2006

SUBSTANCE CONSUMPTION AND CONSEQUENCES

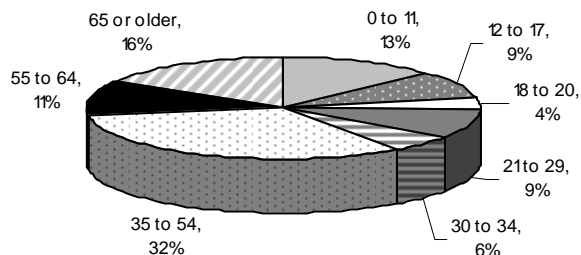
OXFORD COUNTY

INTRODUCTION

As part of the needs assessment, Strategic Prevention Framework State Incentive Grant Phase I grantees are asked to examine countywide consumption and consequence data in order to identify substance prevention priorities. The following pages contain charts and figures for Oxford County that come from a variety of sources and mirror the statewide epidemiological work done in the past year. This document provides a starting point for answering some of the key questions that are asked in the SPF SIG needs assessment process outlined in *Maine's Strategic Prevention Framework Guide to Assessment and Planning*.

COUNTY POPULATION

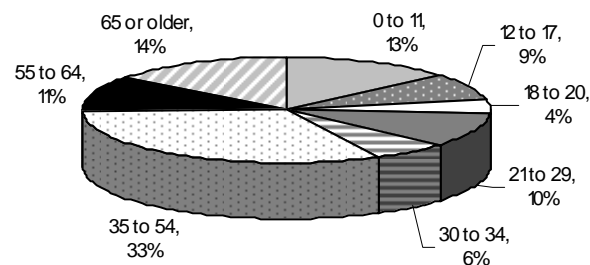
**Total population, by age:
Oxford County, 2003**



N = 56,151

Source: National Center for Health Statistics and U.S. Census Bureau, 2003.

**Total population, by age:
Maine, 2003**



N = 1,305,732

Source: National Center for Health Statistics and U.S. Census Bureau, 2003.

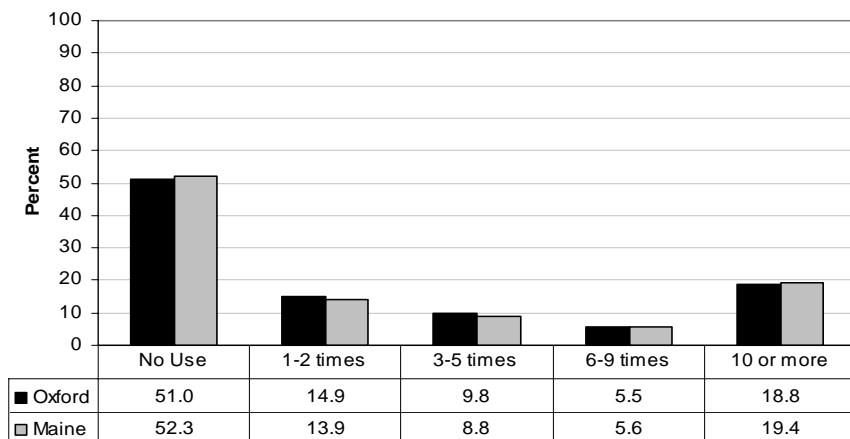
The residents of Oxford County are similar to the State in terms of age. Therefore, observed differences between the county and the State are likely not attributable to a different age composition.

SUBSTANCE CONSUMPTION: YOUTH

OXFORD COUNTY

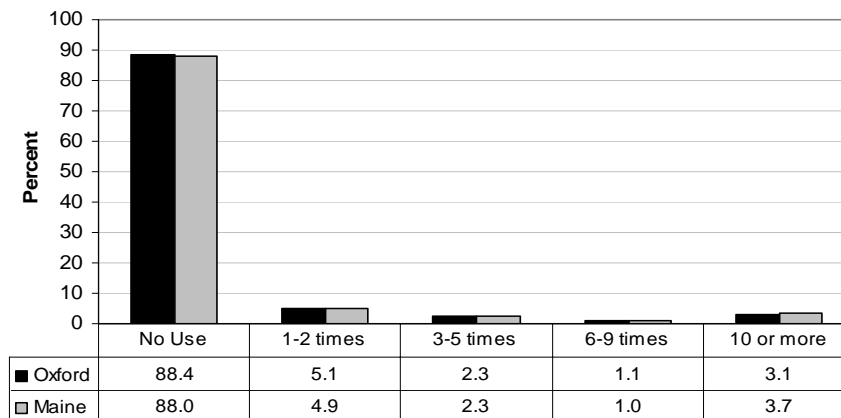
LIFETIME CONSUMPTION PATTERNS AMONG 6TH TO 12TH GRADERS

Lifetime alcohol use among 6th through 12th graders:
Oxford County and Maine, 2006



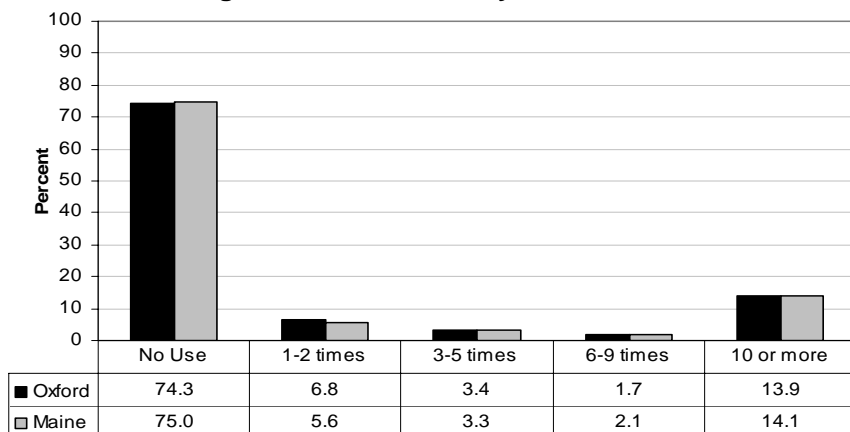
Source: MYDAUS, 2006

Lifetime misuse of prescription drugs among 6th through 12th graders: Oxford County and Maine, 2006



Source: MYDAUS, 2006

Lifetime marijuana use among 6th through 12th graders: Oxford County and Maine, 2006



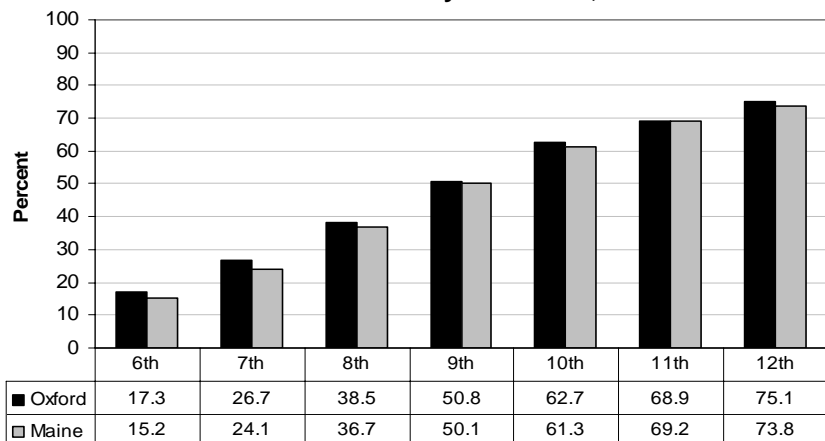
Source: MYDAUS, 2006

SUBSTANCE CONSUMPTION: YOUTH

OXFORD COUNTY

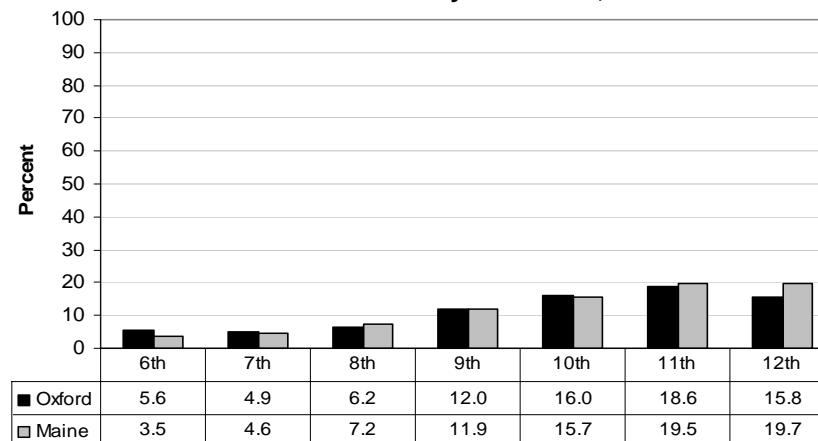
LIFETIME CONSUMPTION AMONG 6TH TO 12TH GRADERS, BY GRADE

Lifetime alcohol use, by grade:
Oxford County and Maine, 2006



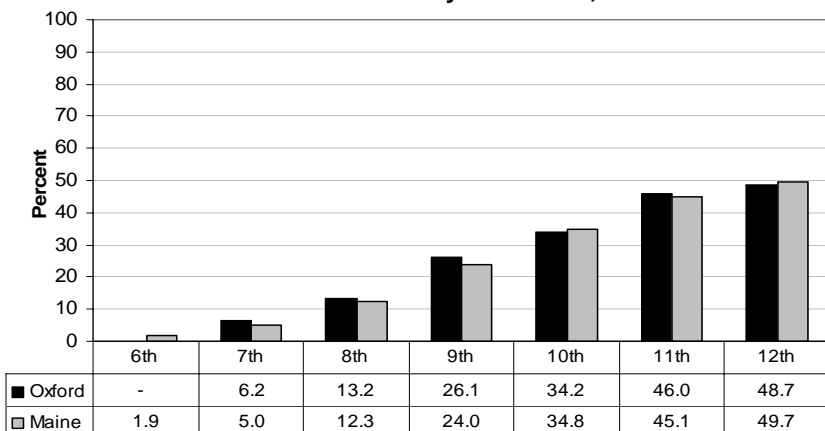
Source: MYDAUS, 2006

Lifetime misuse of prescription drugs, by grade:
Oxford County and Maine, 2006



Source: MYDAUS, 2006

Lifetime marijuana use, by grade:
Oxford County and Maine, 2006



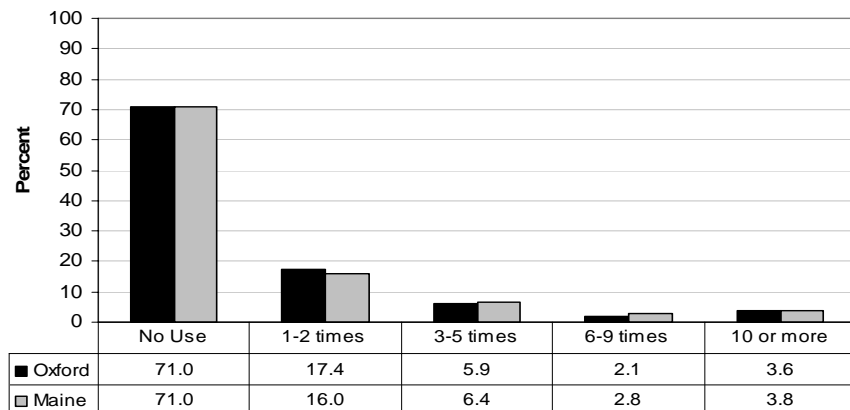
Source: MYDAUS, 2006. The symbol "-" indicates data were suppressed to protect confidentiality.

SUBSTANCE CONSUMPTION: YOUTH

OXFORD COUNTY

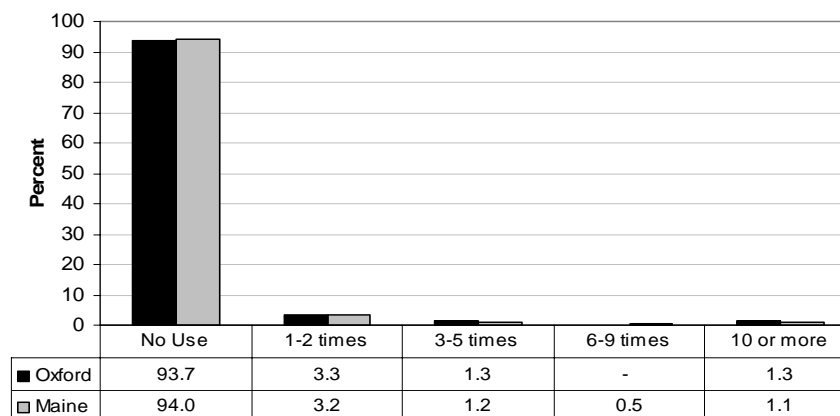
PREVIOUS 30-DAY CONSUMPTION PATTERNS AMONG 6TH TO 12TH GRADERS

Previous 30-day use of alcohol among 6th through 12th graders: Oxford County and Maine, 2006



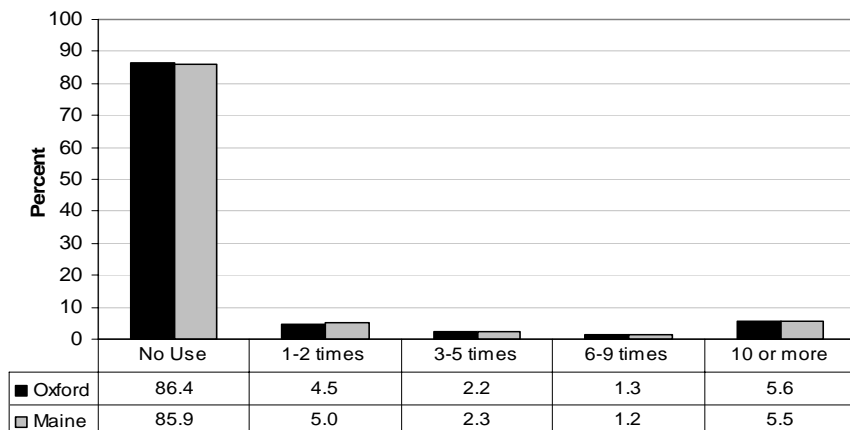
Source: MYDAUS, 2006

Previous 30-day misuse of prescription drugs among 6th through 12th graders: Oxford County and Maine, 2006



Source: MYDAUS, 2006

Previous 30-day use of marijuana among 6th through 12th graders: Oxford County and Maine, 2006



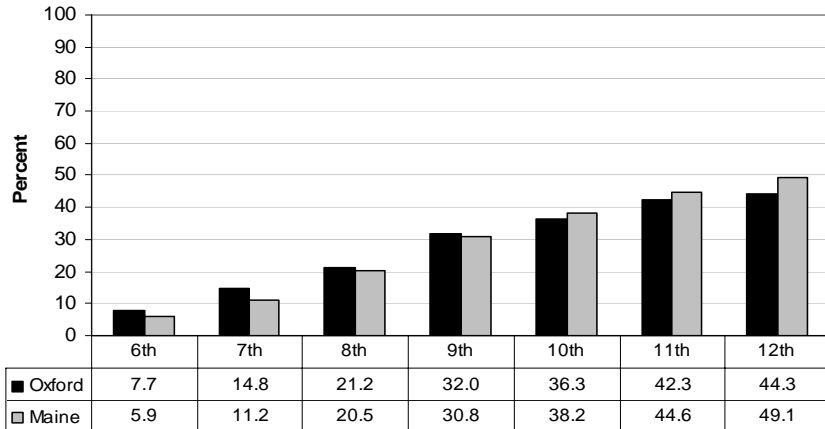
Source: MYDAUS, 2006

SUBSTANCE CONSUMPTION: YOUTH

OXFORD COUNTY

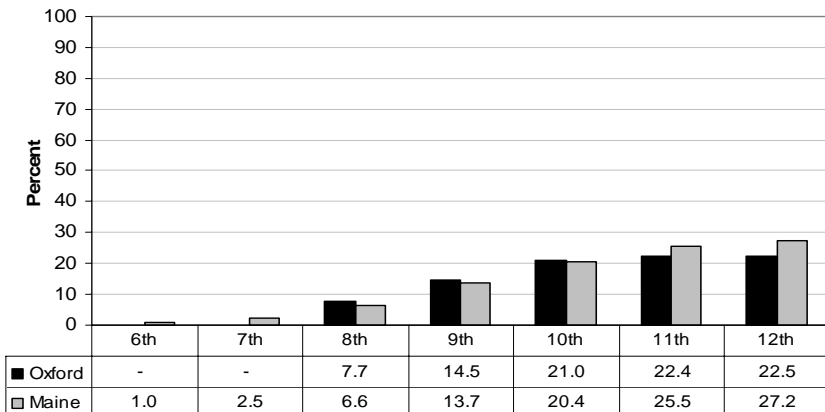
PREVIOUS 30-DAY CONSUMPTION PATTERNS AMONG 6TH TO 12TH GRADERS, BY GRADE

Previous 30-day alcohol use, by grade:
Oxford County and Maine, 2006



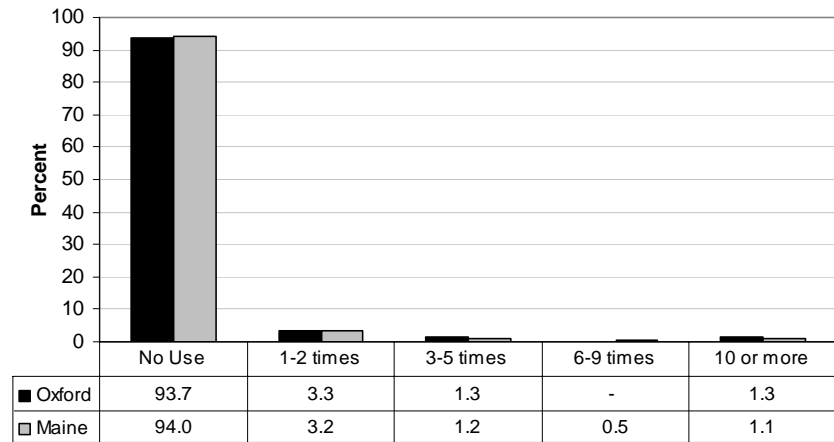
Source: MYDAUS, 2006.

Previous 30-day marijuana use, by grade:
Oxford County and Maine, 2006



Source: MYDAUS, 2006. The symbol "-" indicates data were suppressed to protect confidentiality.

Previous 30-day misuse of prescription drugs among 6th through 12th graders: Oxford County and Maine, 2006



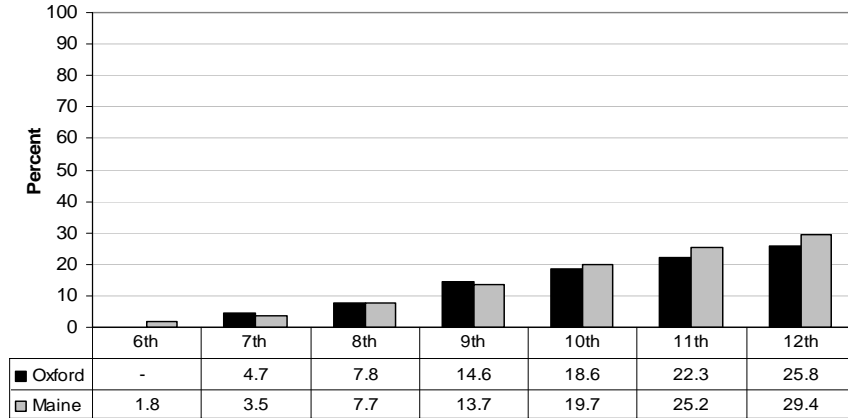
Source: MYDAUS, 2006

SUBSTANCE CONSUMPTION: YOUTH

OXFORD COUNTY

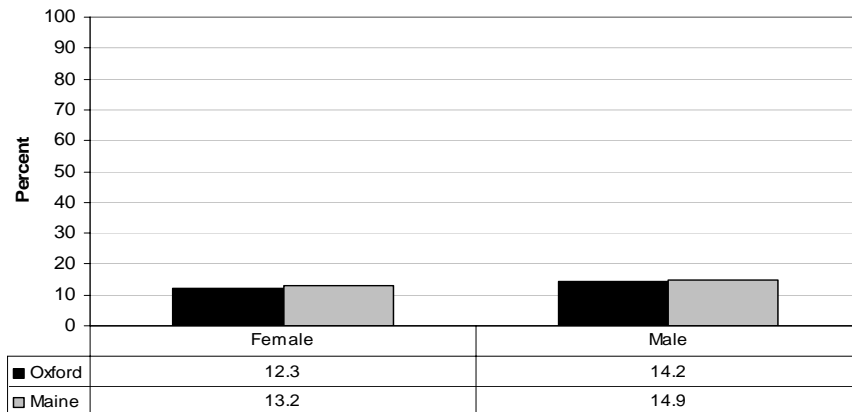
BINGE DRINKING AMONG 6TH TO 12TH GRADERS

Percentage of students who participated in binge drinking within the last 2 weeks, by grade: Oxford County and Maine, 2006



Source: MYDAUS, 2006. The symbol "-" indicates data were suppressed to protect confidentiality.

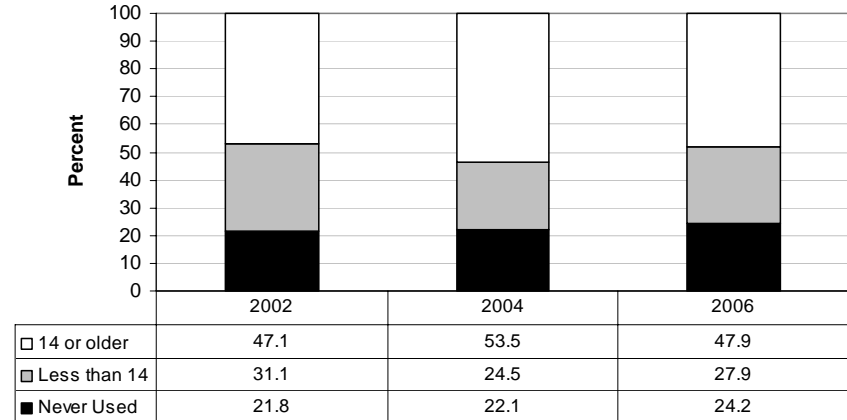
Percentage of students who participated in binge drinking within the last 2 weeks, by gender: Oxford County and Maine, 2006



Source: MYDAUS, 2006

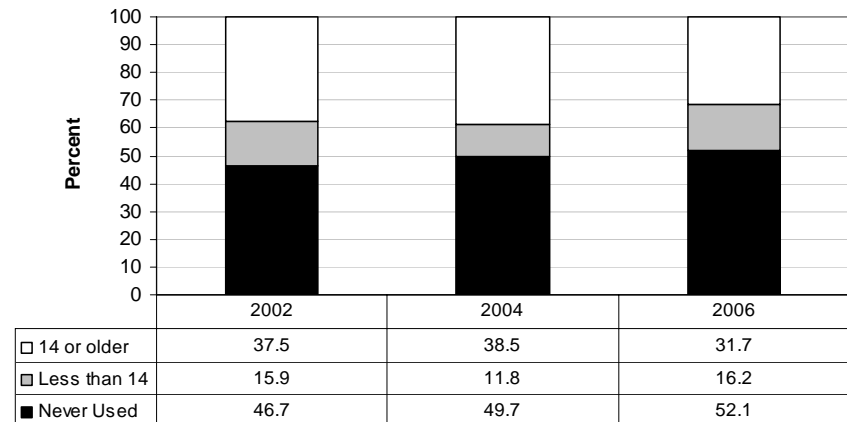
AGE FIRST TRIED ALCOHOL OR MARIJUANA

Age first tried alcohol (more than 1-2 sips), grades 11 and 12: Oxford County, 2002, 2004 and 2006



Source: MYDAUS, 2002-2006

Age first tried marijuana, grades 11 and 12: Oxford County, 2002, 2004 and 2006



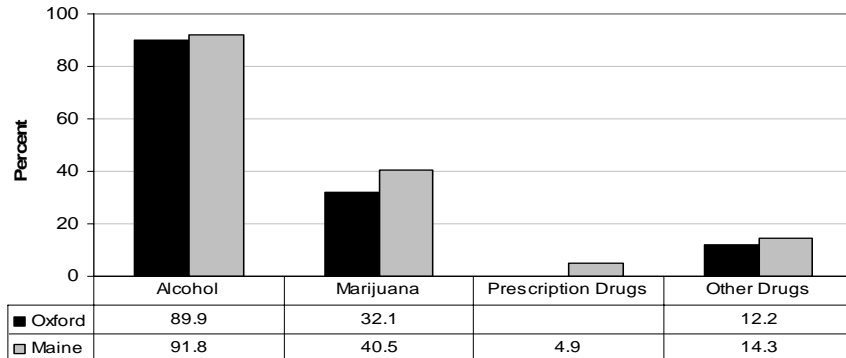
Source: MYDAUS, 2002-2006

SUBSTANCE CONSUMPTION: ADULTS

OXFORD COUNTY

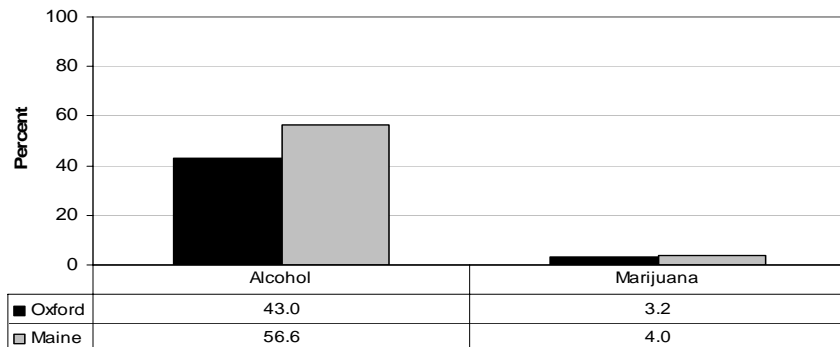
ALCOHOL AND DRUG CONSUMPTION AMONG ADULTS 18 AND OLDER

Lifetime use among adults age 18 and older, by substance: Oxford County and Maine, 2004



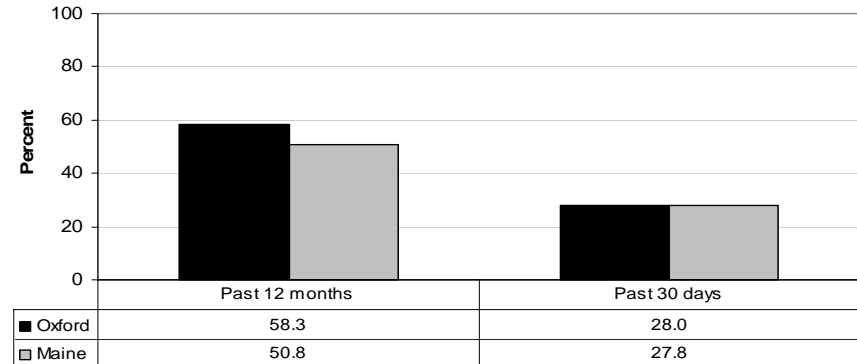
Note: Prescription drug use refers to use that was not prescribed by a doctor.
Source: Maine General Population Survey, 2004.

Past 30-day use of alcohol and marijuana among adults age 18 and older: Oxford County and Maine, 2004



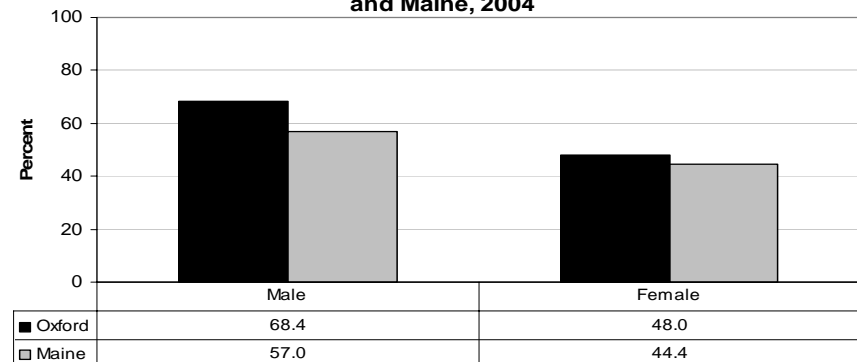
Note: For prescription drugs and other drugs, there were too few cases for a reliable estimate.
Source: Maine General Population Survey, 2004.

Adults age 18 and older who have participated in binge drinking*: Oxford County and Maine, 2004



*Binge drinking is defined as 5 or more alcoholic beverages for men in one occasion and 4 or more alcoholic beverages for women in one occasion.
Source: Maine General Population Survey, 2004.

Adults age 18 and older who have participated in binge drinking* in the past 12 months, by gender: Oxford County and Maine, 2004



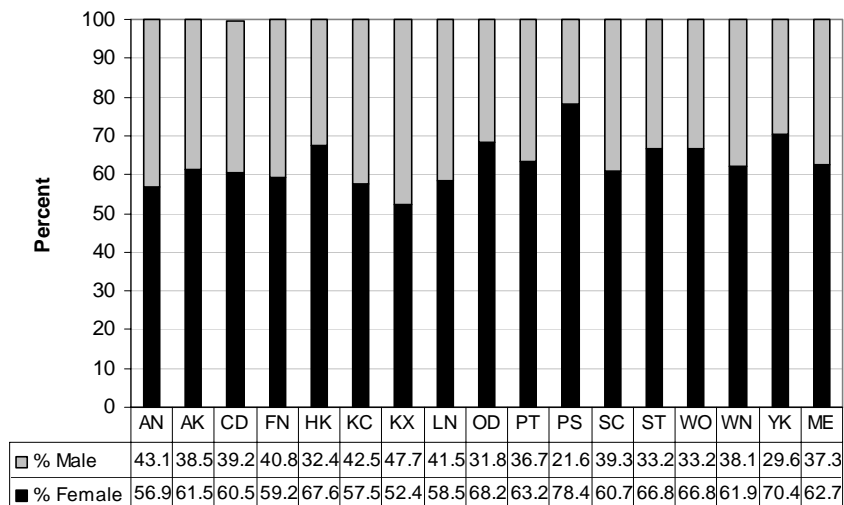
*Binge drinking is defined as 5 or more alcoholic beverages for men in one occasion and 4 or more alcoholic beverages for women in one occasion.
Source: Maine General Population Survey, 2004.

SUBSTANCE CONSUMPTION: ADULTS

OXFORD COUNTY

PRESCRIPTION DRUG CONSUMPTION (ALL AGES)

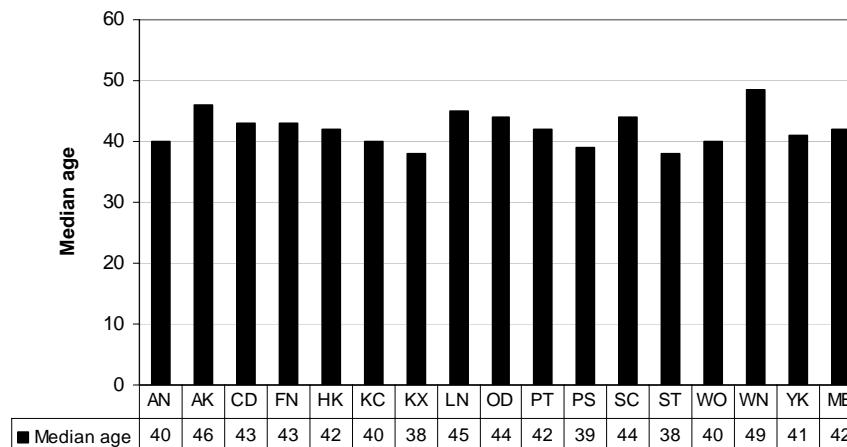
Gender distribution of individuals who crossed the threshold for prescription drug purchases, by county: 2004



Source: Prescription Monitoring Program (PMP), State Fiscal Year 2004.

AN – Androscoggin
 AK – Aroostook
 CD – Cumberland
 FN – Franklin
 HK – Hancock
 KC – Kennebec
 KN – Knox
 LN – Lincoln

Median age of individuals crossing the threshold for prescription drug purchases, by county: 2004



Source: Prescription Monitoring Program (PMP), State Fiscal Year 2004.

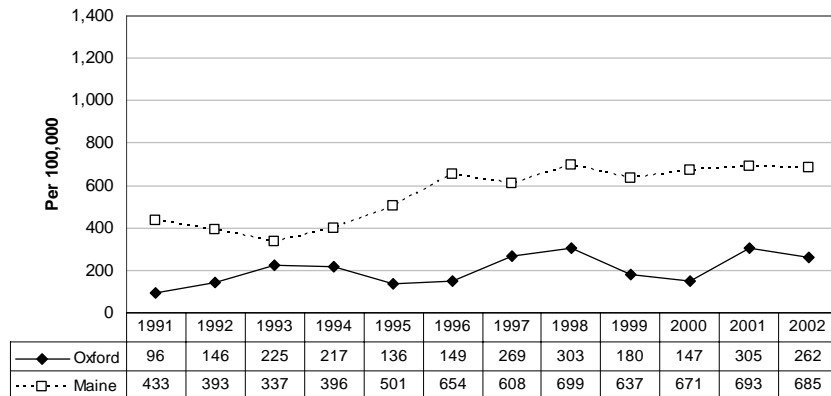
OD – Oxford
 PT – Penobscot
 PS – Piscataquis
 SC – Sagadahoc
 ST – Somerset
 WO – Waldo
 WN – Washington
 YK – York

SUBSTANCE USE CONSEQUENCES: YOUTH

OXFORD COUNTY

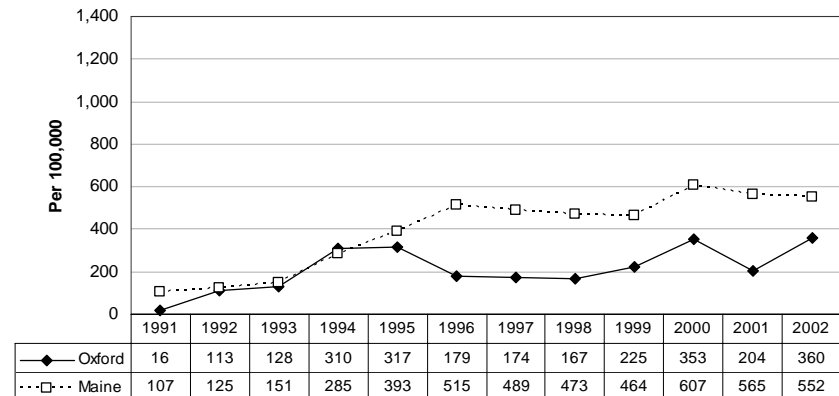
ALCOHOL- AND DRUG- RELATED ARRESTS

Juvenile arrests for alcohol violations, per 100,000 youth age 10-17: Oxford County and Maine, 1991-2002



Notes: Data reflect all alcohol violations combined (OUI, liquor law violations and drunkenness).
Source: OSA Indicator data. (Department of Public Safety - Uniform crime reporting), 1991-2002.

Juvenile arrests for drug violations, per 100,000 youth age 10-17: Oxford County and Maine, 1991-2002



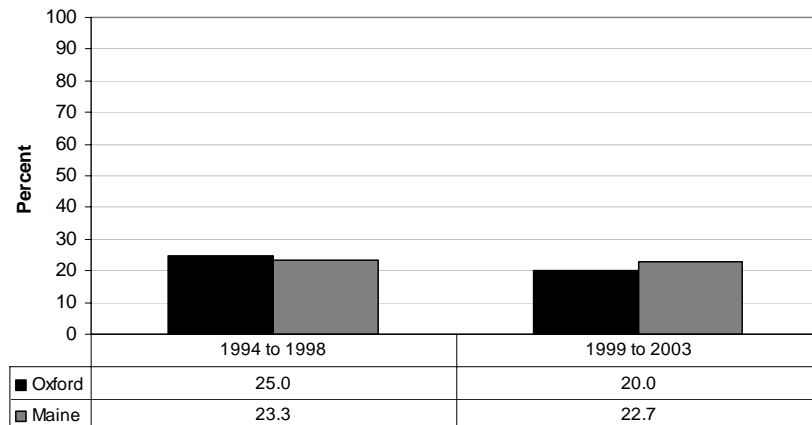
Notes: Data reflect all drug violations combined (possession, sale, use, growing, manufacturing).
Source: OSA Indicator data. (Department of Public Safety - Uniform crime reporting), 1991-2002.

SUBSTANCE USE CONSEQUENCES: YOUTH OXFORD COUNTY

FATAL TRAFFIC ACCIDENTS INVOLVING ALCOHOL

These results should be interpreted with caution as estimates are based on low numbers.

Percent of all youth drivers* in fatal crashes who were alcohol-involved: Oxford County and Maine, 1994 to 1998 and 1999 to 2003

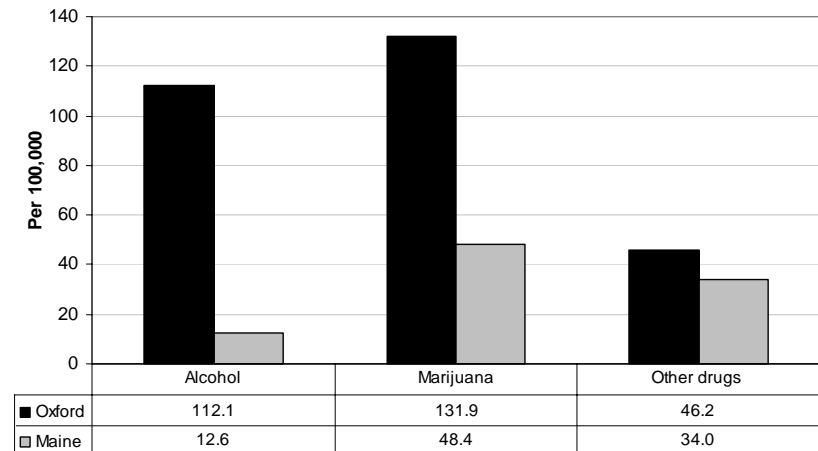


*Youth drivers includes drivers under the age of 21.

Source: Fatality Analysis Reporting System (FARS) 1994-2003.

ALCOHOL- AND DRUG- RELATED SUSPENSIONS/REMOVALS

Suspensions/removals (3-year average) due to alcohol or drugs per 100,000 youth ages 12 to 17: Oxford County and Maine, 2001-02 to 2003-04



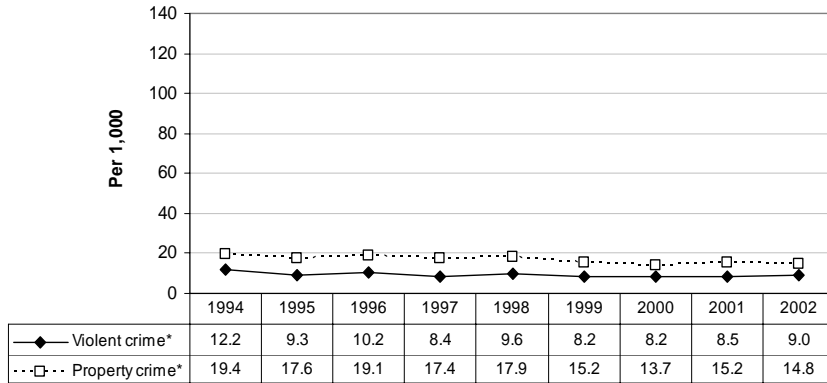
Source: Lobster Book, Safe and Drug Free Schools (SDFS), 2001-02 to 2003-04.

SUBSTANCE USE CONSEQUENCES: ADULTS

OXFORD COUNTY

CRIME AND ARRESTS

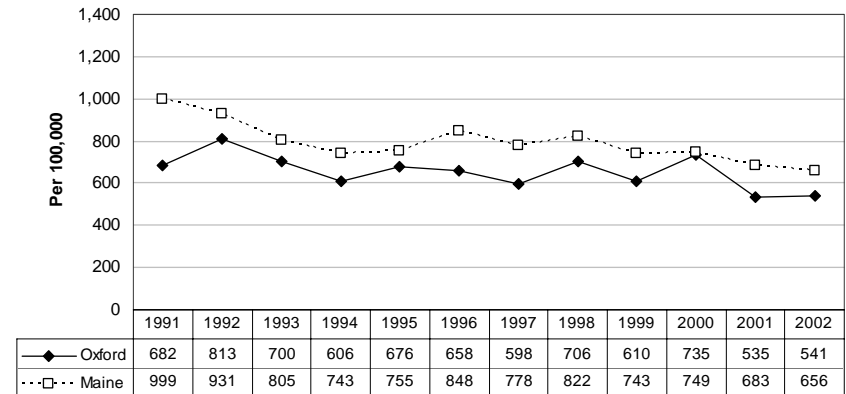
Rate of reported crimes per 1,000 people:
Oxford County, 1994 to 2002



*Violent crime includes aggravated assault, burglary and sexual assault. Property crime includes robbery, larceny, and car theft.

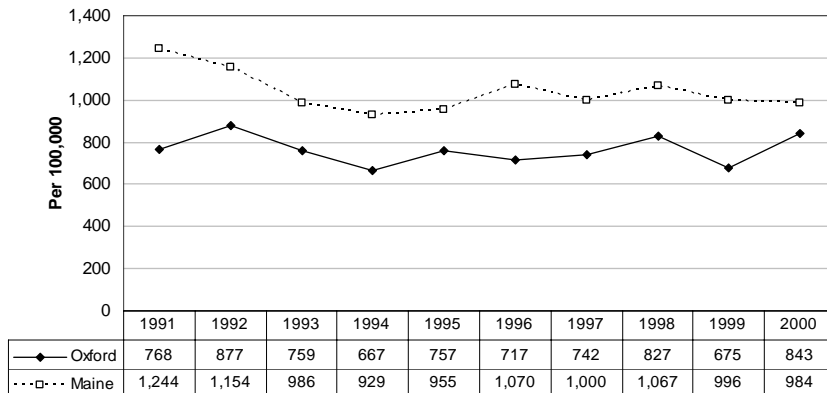
Source: Uniform Crime Reporting (UCR), 1994-2002.

Adult OUI arrests, per 100,000 adults age 18 and over: Oxford County and Maine, 1991-2002



Source: OSA Indicator data. (Department of Public Safety - Uniform crime reporting), 1991-2002.

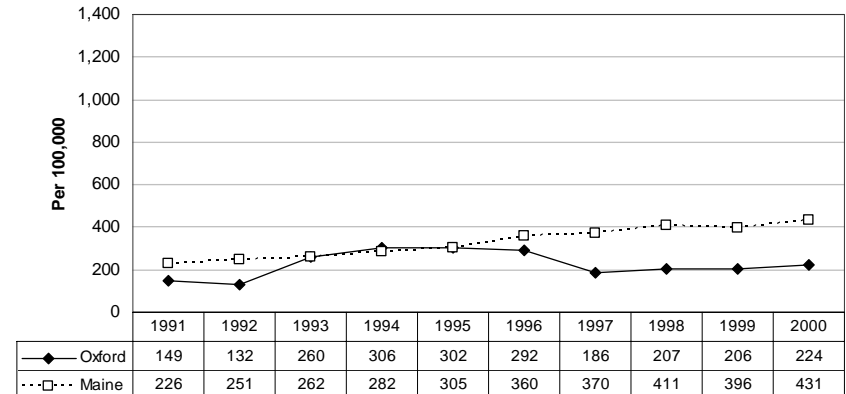
Arrests for alcohol violations, per 100,000 adults age 18 and over:
Oxford County and Maine, 1991-2000



Notes: Data reflect all alcohol violations combined (OUI, liquor law violations and drunkenness).

Source: OSA Indicator data. (Department of Public Safety - Uniform crime reporting), 1991-2000.

Arrests for drug violations, per 100,000 adults age 18 and over:
Oxford County and Maine, 1991-2000



Notes: Data reflect all drug violations combined (possession, sale, use, growing, manufacturing).

Source: OSA Indicator data. (Department of Public Safety - Uniform crime reporting), 1991-2000.

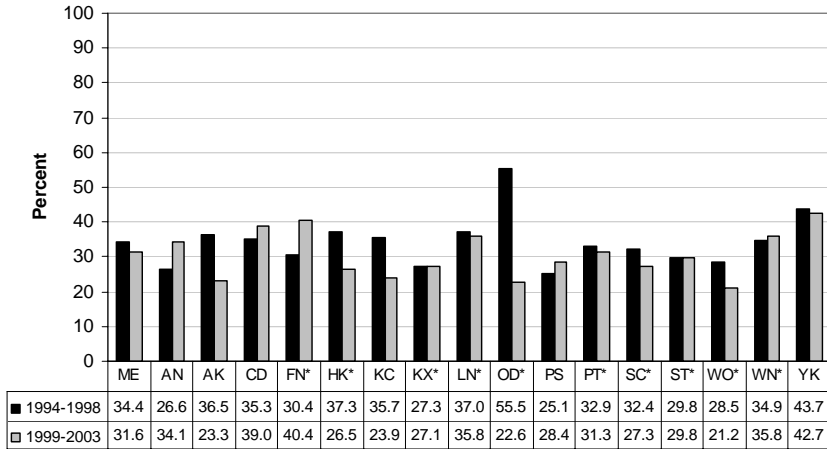
SUBSTANCE USE CONSEQUENCES: ADULTS

OXFORD COUNTY

FATAL TRAFFIC ACCIDENTS INVOLVING ALCOHOL

These results should be interpreted with caution as estimates are based on low numbers.

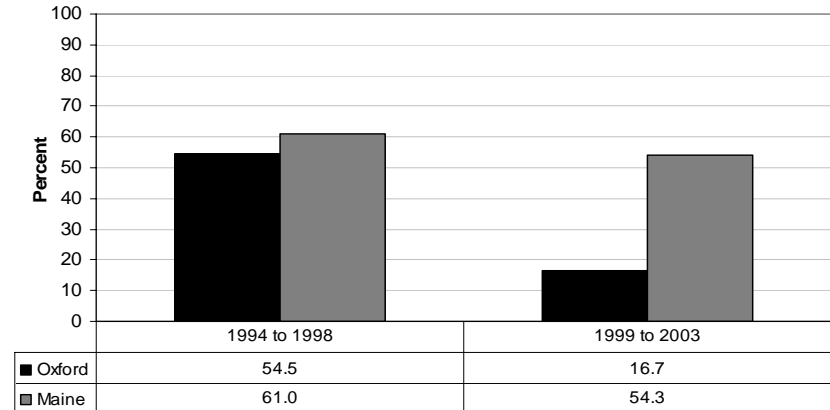
Percent of total fatal crashes over 5 years that were alcohol-related, by County (all ages): 1994-1998 and 1999-2003



*The total number of fatal crashes is 10 or less in each 5-year period.
Source: Fatality Analysis Reporting System (FARS) 1994-2003.

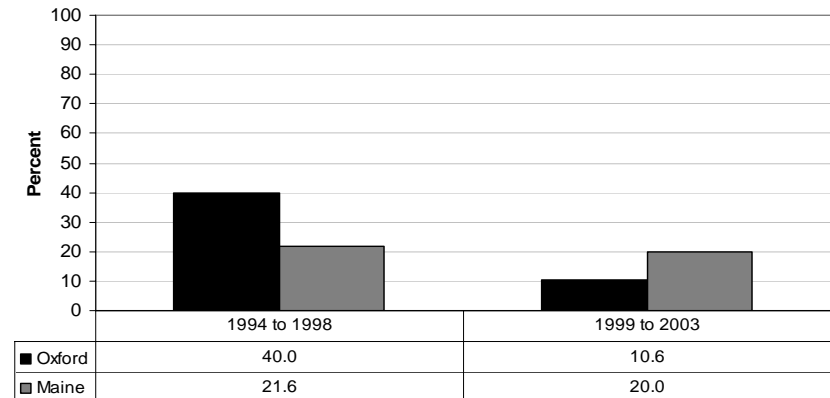
- AN – Androscoggin
- AK – Aroostook
- CD – Cumberland
- FN – Franklin
- HK – Hancock
- KC – Kennebec
- KN – Knox
- LN – Lincoln
- OD – Oxford
- PT – Penobscot
- PS – Piscataquis
- SC – Sagadahoc
- ST – Somerset
- WO – Waldo
- WN – Washington
- YK – York

Percent of all young adult drivers* in fatal crashes who were alcohol-involved: Oxford County and Maine, 1994 to 1998 and 1999 to 2003



*Young adult drivers includes drivers between the ages of 21 and 29.
Source: Fatality Analysis Reporting System (FARS) 1994-2003.

Percent of all adult drivers* in fatal crashes who were alcohol-involved: Oxford County and Maine, 1994 to 1998 and 1999 to 2003



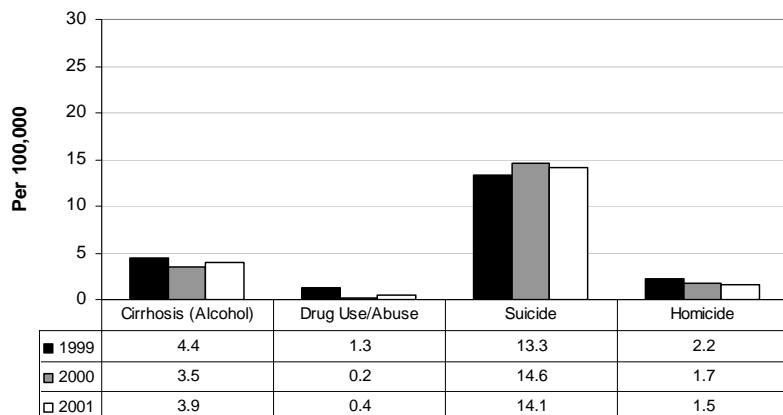
*Adult drivers includes drivers age 30 and older.
Source: Fatality Analysis Reporting System (FARS) 1994-2003.

SUBSTANCE USE CONSEQUENCES: ADULTS

OXFORD COUNTY

MORTALITY

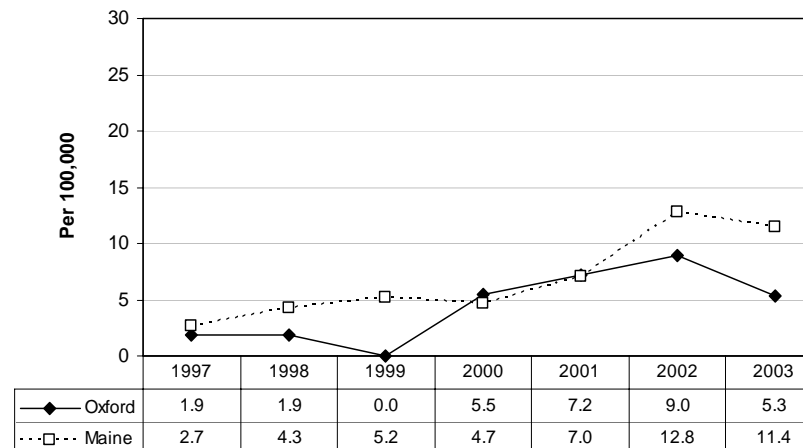
**Deaths by underlying cause, per 100,000 people:
All counties with less than 100,000 residents, 1999 to 2001**



Note: It is estimated that roughly 20 percent of suicides and 30 percent of homicides are attributable to substance use (alcohol and/or drugs).

Source: National Center for Health Statistics Multiple Cause of Death Public-Use Files, 1999-2001.

**Overdose deaths per 100,000 people:
Oxford County and Maine, 1997- 2003**



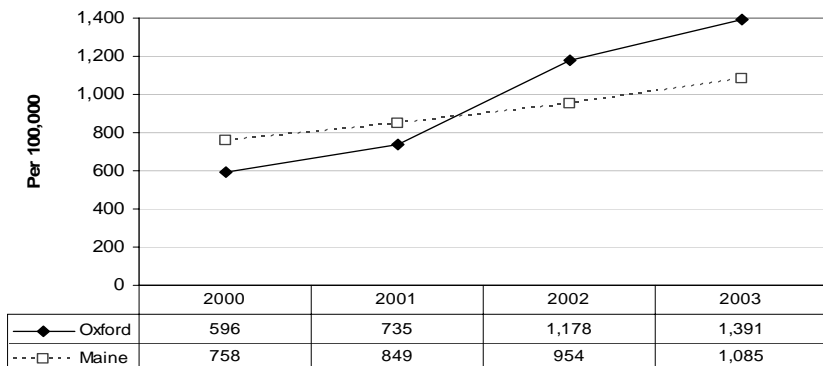
Source: Maine Drug Enforcement Agency (MDEA), 1997-2003.

SUBSTANCE USE CONSEQUENCES: ADULTS

OXFORD COUNTY

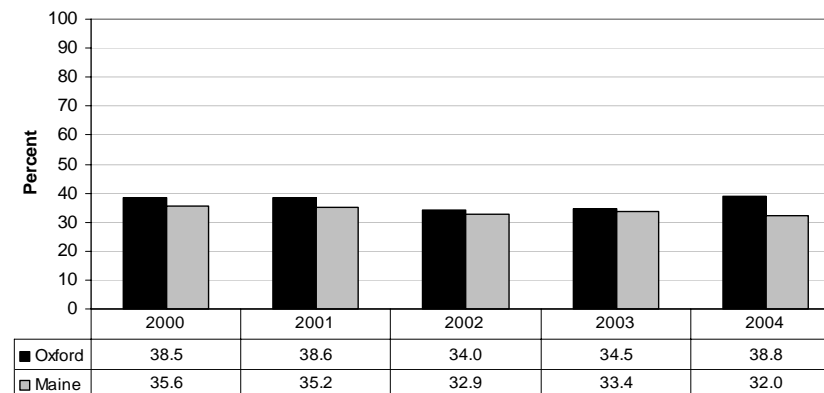
TREATMENT

Treatment admissions (all ages) per 100,000: Oxford County and Maine, 2000-2003



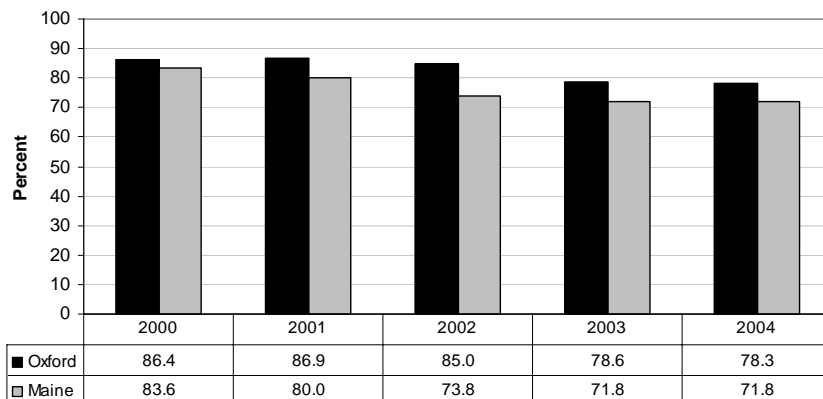
Source: Treatment Data System (TDS), 2000-2003 and U.S. Census Bureau.

Percent of total treatment admissions among adults (18 and older) involving marijuana*: Oxford County and Maine, 2000 to 2004



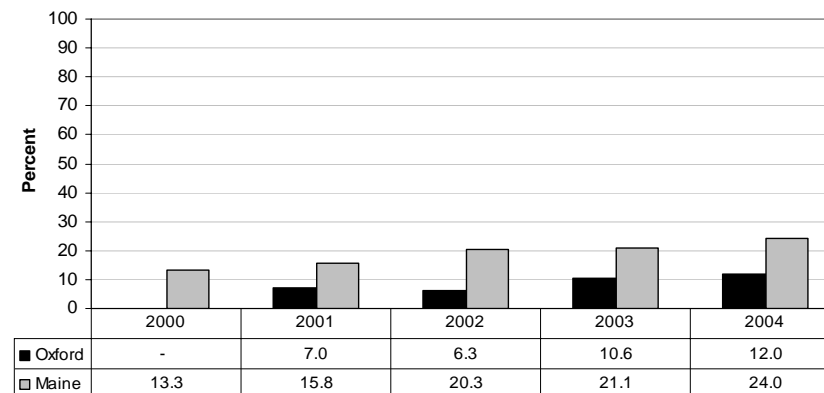
*Marijuana may have been the primary, secondary or tertiary substance for which treatment was sought. Source: Treatment Data System (TDS) for state fiscal years 2000 to 2004.

Percent of total treatment admissions among adults (18 and older) involving alcohol*: Oxford County and Maine, 2000 to 2004



*Alcohol may have been the primary, secondary or tertiary substance for which treatment was sought. Source: Treatment Data System (TDS) for state fiscal years 2000 to 2004.

Percent of total treatment admissions among adults (18 and older) involving prescription drugs*: Oxford County and Maine, 2000 to 2004



*Prescription drugs may have been the primary, secondary or tertiary substance for which treatment was sought. The symbol "-" indicates that data was suppressed to protect confidentiality. Source: Treatment Data System (TDS) for state fiscal years 2000 to 2004.

EXPLANATION OF TERMS USED IN THE PROFILE:

Alcohol-involved is a driver who had alcohol in his or her system, although the amount could be less than the legal limit.

Alcohol-related is a fatal crash in which a driver was alcohol involved.

Alcohol violations include Operating Under the Influence (OUI), liquor law violations and drunkenness.

Binge drinking for adults is defined as 5 or more alcoholic beverages for men in one occasion, and 4 or more alcoholic beverages for women in one occasion. For youth, there is no distinction between gender and binge drinking is defined as 5 or more alcohol beverages in one occasion.

Drug violations include possession, sale, use, growing and manufacturing.

Lifetime use of a substance refers to whether a person has ever used the substance, even once.

Misuse of prescription drugs, for youth, means that a student used a pharmaceutical that was not specifically prescribed by a doctor. For adults, misuse means that a person used painkillers or tranquilizers in any form that were not medically prescribed.

Previous 30-day use refers to whether the person used the substance within the 30-day period prior to the administration of the survey.

Property crime includes robbery, larceny and car theft.

Rate per 1,000 or 100,000 reflects a special kind of ratio that indicates the frequency with which an event occurs in a defined population over a period of time. The components of a rate include the number of incidents (e.g., number of arrests) and the population in question. Performing this calculation helps make the

total number of incidents within a small county comparable to the total number of incidents found statewide.

Removal from school is defined as long-term suspension or expulsion (see below).

Suspension is defined as temporary removal from school greater than 10 days; two types of suspensions are counted in this category: (1) a single suspension of more than 10 days, and (2) multiple short-term suspensions of the same student totaling more than 10 days.

Thresholds for prescription drugs are set by the State and are used every quarter to help identify patients who may be obtaining an unsafe level of prescription dispensing.

Violent crime includes aggravated assault, burglary and sexual assault.

Treatment admission reporting is required for publicly funded treatment facilities, although some private facilities report voluntarily. The data included here includes all admissions and does not distinguish whether a person returned more than once in the same year.