

Department of Health and Human Services
Maine Center for Disease Control and Prevention
286 Water Street
11 State House Station
Augusta, Maine 04333-0011
Tel.: (207) 287-8016; Fax: (207) 287-9058
TTY Users: Dial 711 (Maine Relay)

Maine Immunization Program
Tel. (207) 287-3746
Fax (207) 287-8127

INFLUENZA VACCINATION COVERAGE AMONG HEALTH CARE WORKERS IN MAINE HOSPITALS

2010-2011 Influenza Season

- Reporting period : September 1, 2010 – March 31, 2011
- Percentages are based on data reported to Maine CDC by health care facilities and calculated as (number of employees vaccinated as of the date of report) /the number of employees at risk
- Employees at risk: all persons having direct patient care or contact with patients at high risk for flu or its complications [e.g., those with high-risk medical conditions and/or 65+ years old].
- Hospitals were de-identified and nine facilities did not report usable data for 2010-2011.

2011-2012 Influenza Season

- Reporting Period: September 1, 2011- March 31, 2012
- Percentages are based on data reported to Maine CDC by healthcare facilities and are calculated as: (number of paid employees vaccinated at the facility plus number of paid employees vaccinated elsewhere) /total number of paid employees
- Paid employees: includes all persons, both full and part-time who receive a direct paycheck from the reporting facility whether or not such individual provide direct patient care
- Hospitals were de-identified and one facility did not report usable data for 2011-2012.

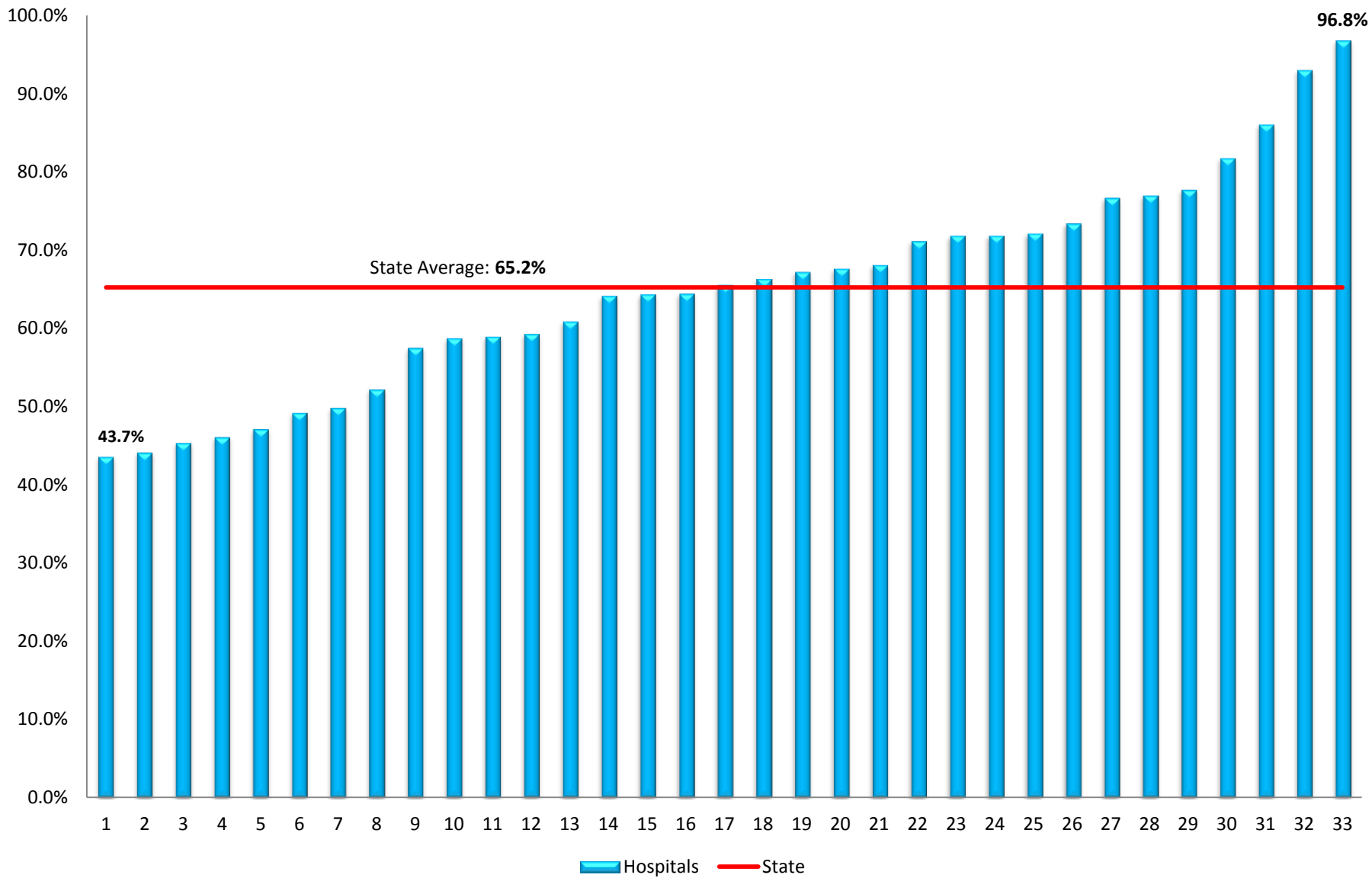
2012-2013 Influenza Season

- Reporting Period: September 1, 2012 – March 31, 2013
- Percentages are based on data reported to Maine CDC by healthcare facilities and are calculated as: (number of paid employees vaccinated at the facility plus number of paid employees vaccinated elsewhere) /total number of paid employees
- Paid employees: includes all persons, both full and part-time who receive a direct paycheck from the reporting facility whether or not such individual provide direct patient care
- Data was adjusted for medical contraindications. [Medical contraindications was not included in previous surveys]
- Hospitals were identified and all facilities reported usable data in 2012-2013.

NOTE: The numbers representing the de-identified hospitals in 2010-2011 and 2011-2012 graphs do not correspond to each other neither does it correspond to the identified hospitals in the 2012-2013 graph.

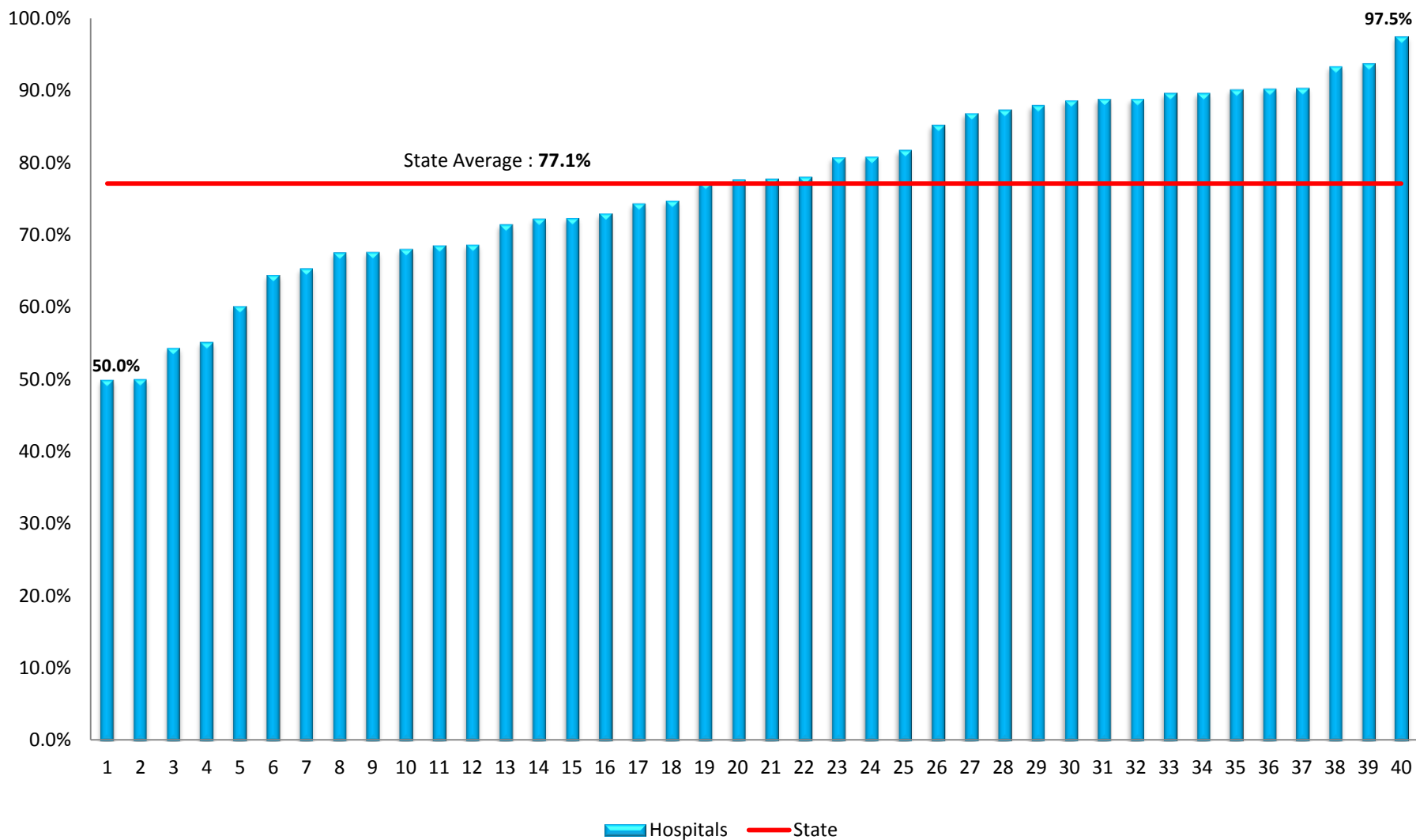
2010-2011 Influenza Season

Percentage of Paid Employees Vaccinated Against Influenza During 2011-2012 Season, by Facility



2011-2012 Influenza Season

Percentage of Paid Employees Vaccinated Against Influenza During 2011-2012 Season, by Facility



2012-2013 Influenza Season

Percentage of Paid Employees Vaccinated Against Influenza During 2012-2013 Season, by Facility

